



A Premium Geospatial Industry Conference

CLICK TO KNOW MORE



ADE

Agência Nacional de
Desenvolvimento Geo-Espacial

Soluções Geo-Espaciais
Geospatial Solutions

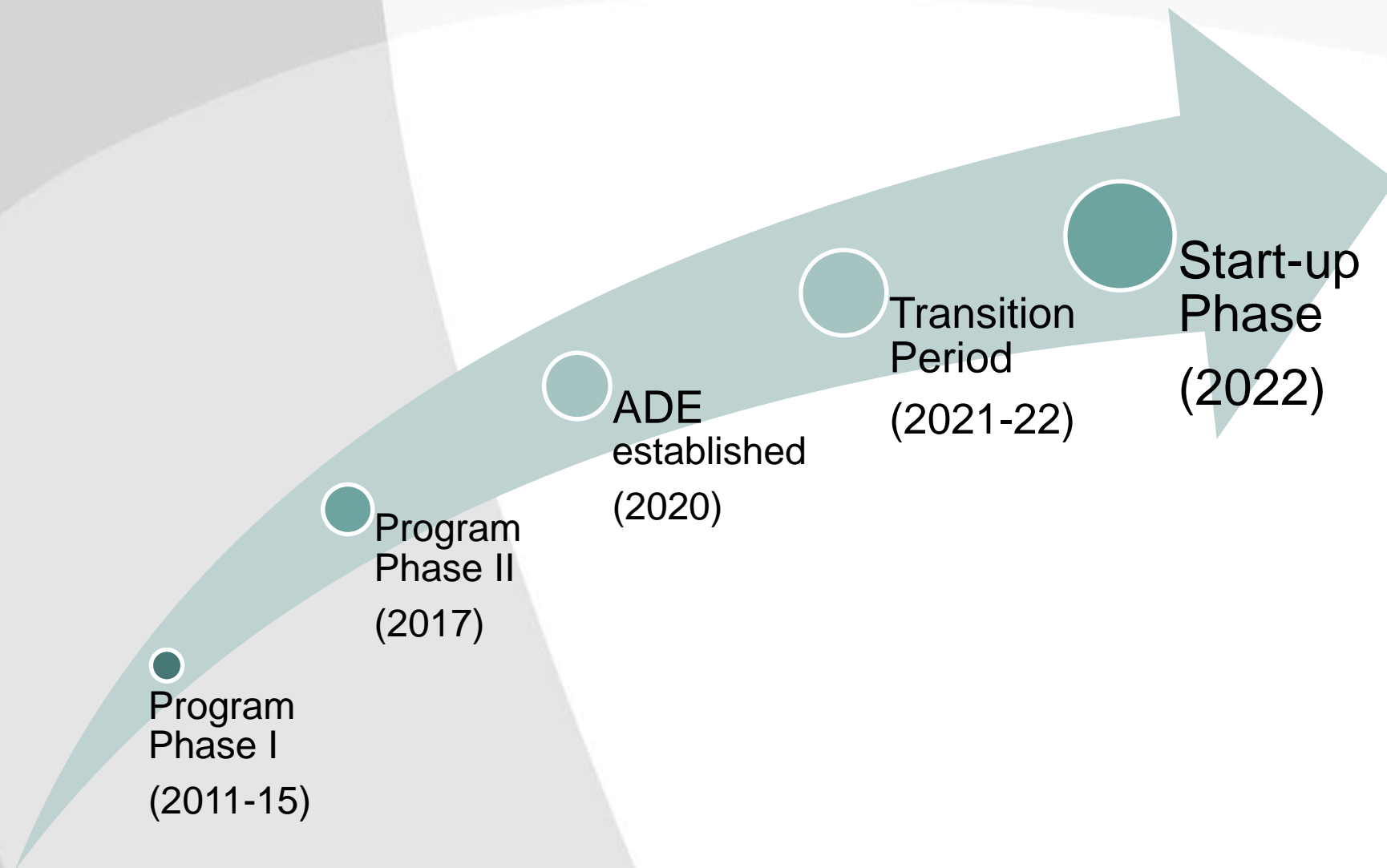


ADE

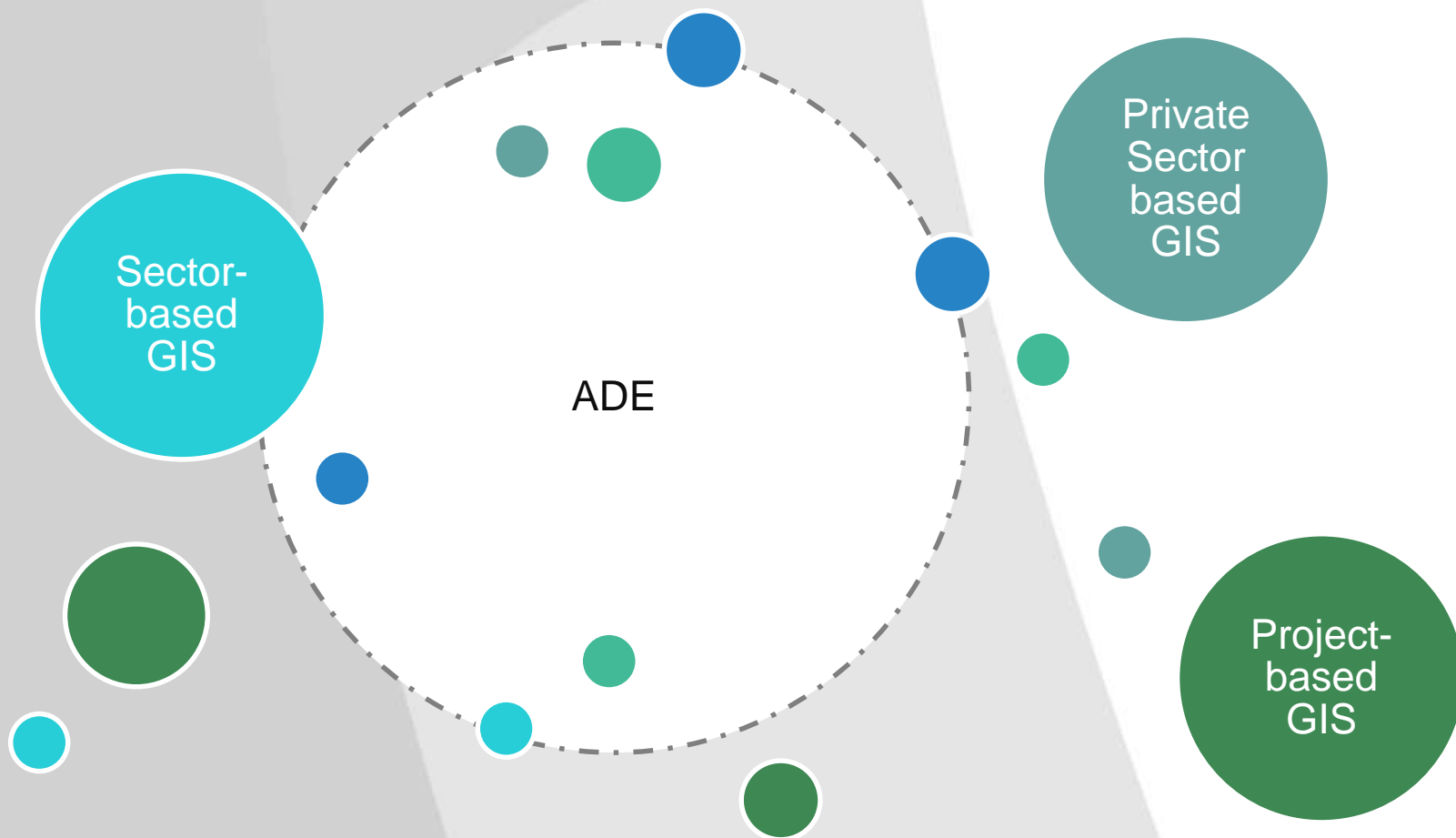
Agência Nacional de
Desenvolvimento
Geo-Espacial

Soluções Geo-Espaciais
Geospatial Solutions

ADE STORY



GIS LANDSCAPE AND SDI



Duplication of efforts

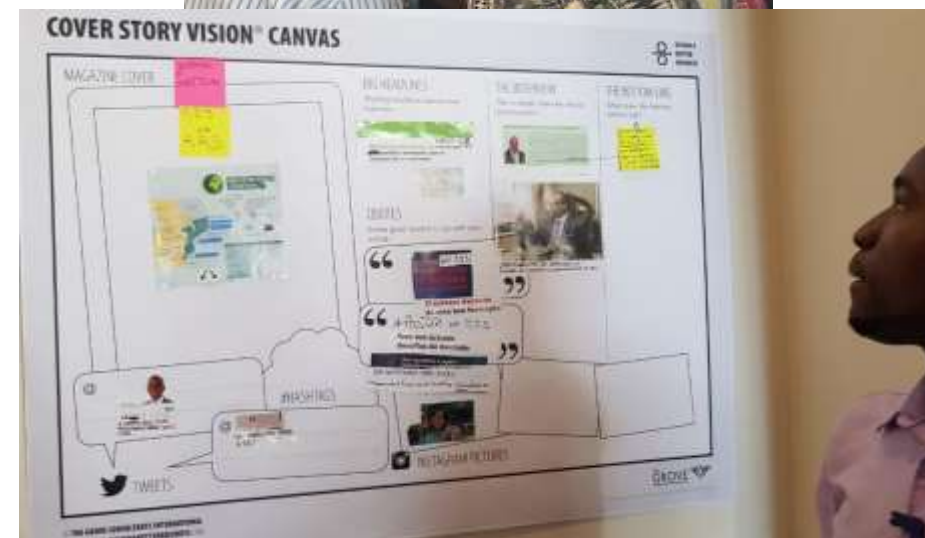
Unknown data quality

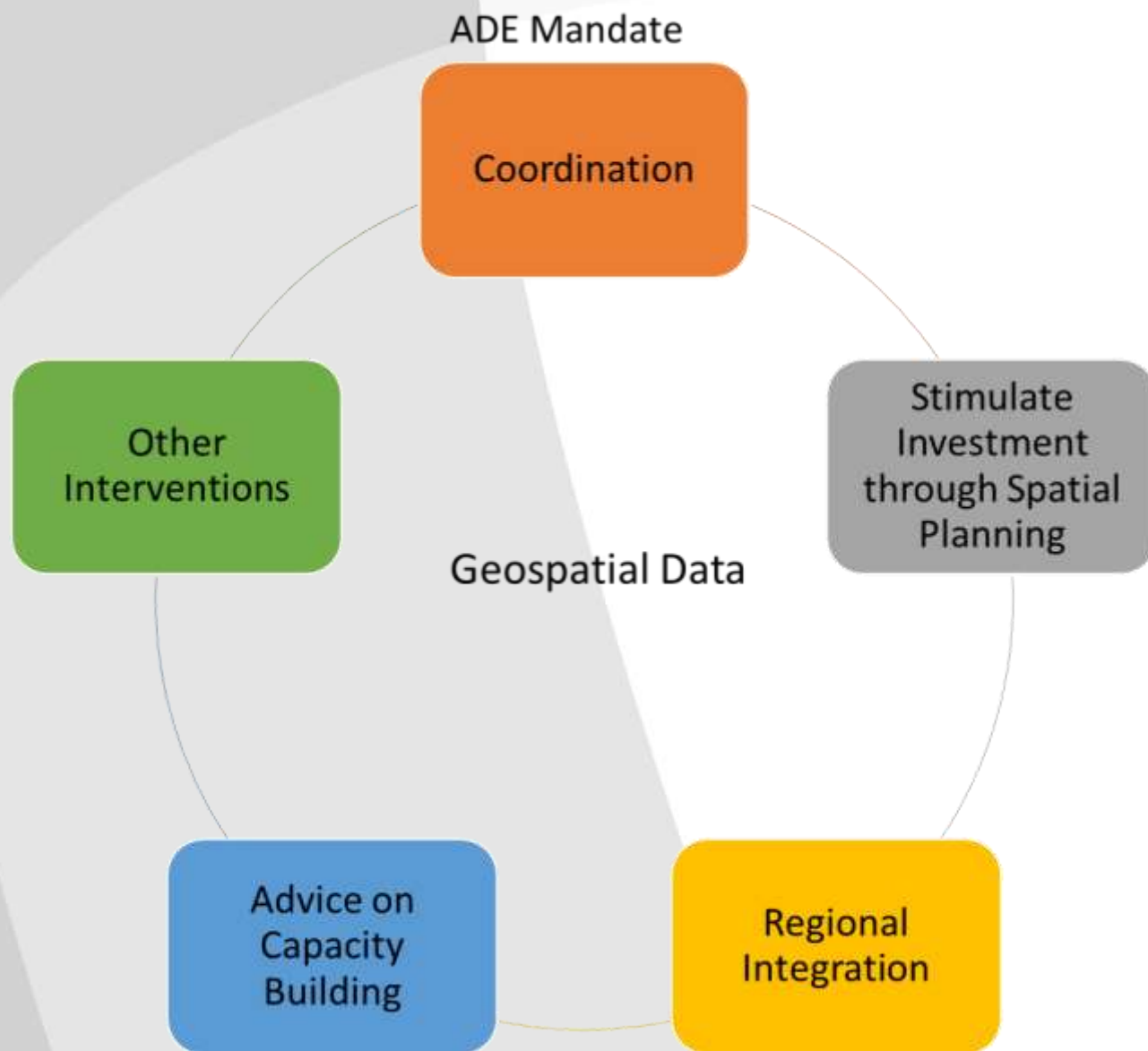
Poor geospatial planning
capacity

ADE STORY

During the start phase of ADE priority fields are:

- a) Stakeholder engagement;
- b) Management and growth of the Geographic Information System Network;
- c) Program development





NON-COMMERCIAL BENEFITS OF IMPLEMENTING ADE

Along with improving access to geographic information, the implementation of an SDI brings other very relevant benefits to Mozambique, of which the following stand out:

- a) Progressive **improvement of the quality** and **systematization** of information made available;
- b) Support for government action and, consequently, for taking better and more political decisions, and the greater efficiency of the State;
- c) Development of the economy and employment;
- d) Efficiency of costs associated with the collection and availability of data space;
- e) Territorial cohesion;
- f) Social cohesion and gender equality;
- g) Clear image of the State's strength and innovation.

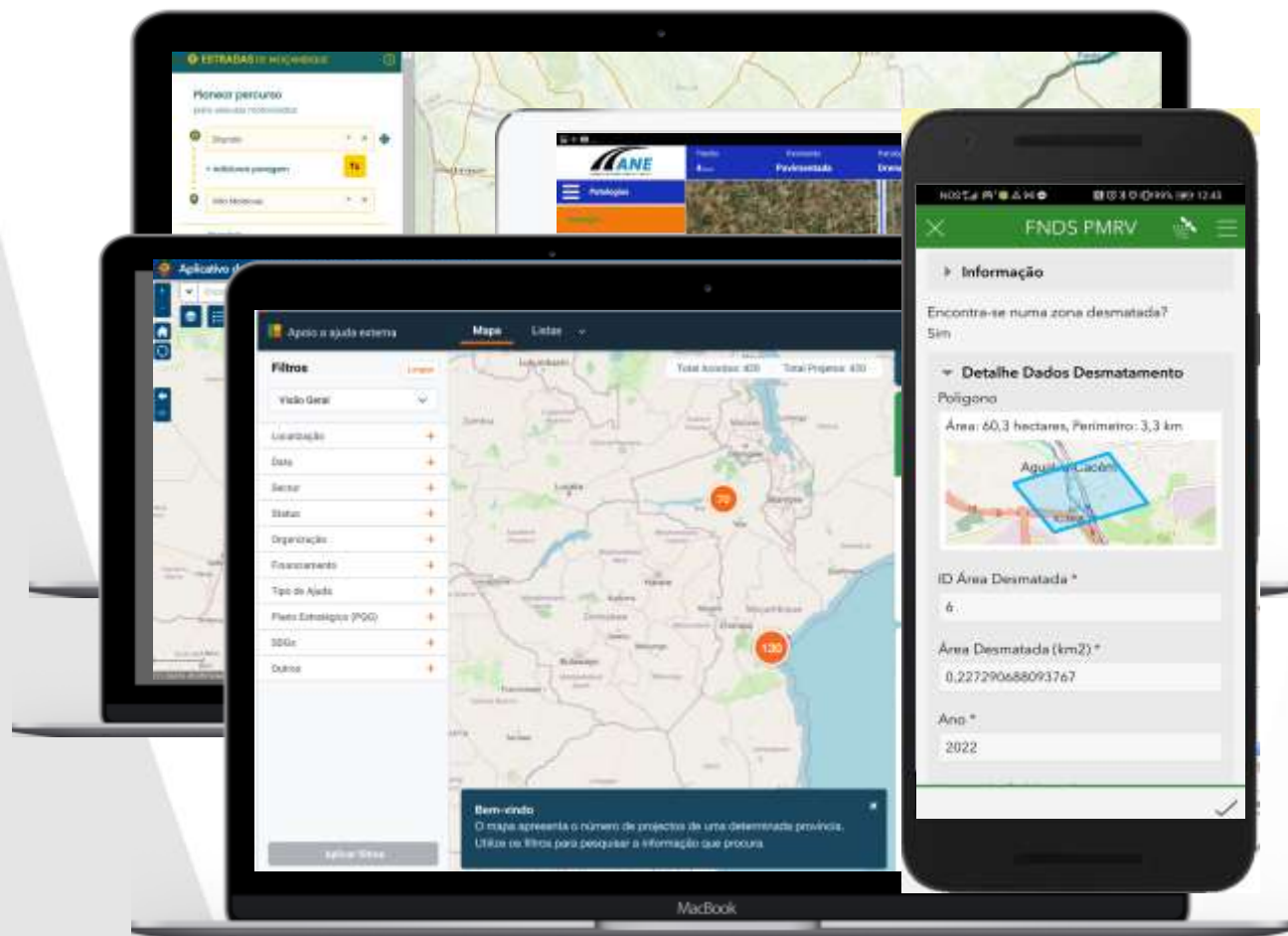
All governmental institutions have access to a **centralized portal**, being able to quickly access **spatial data** covering different areas, such as health, forestry, statistics, education, cadastre. This avoids bureaucratic and time-consuming requests since the data is available to all. In addition, **spatial analysis applications** and other **tools** are available to add value to stakeholders' decisions.



TRANSFORMING OPEN DATA INTO ECONOMIC & SOCIETAL VALUE

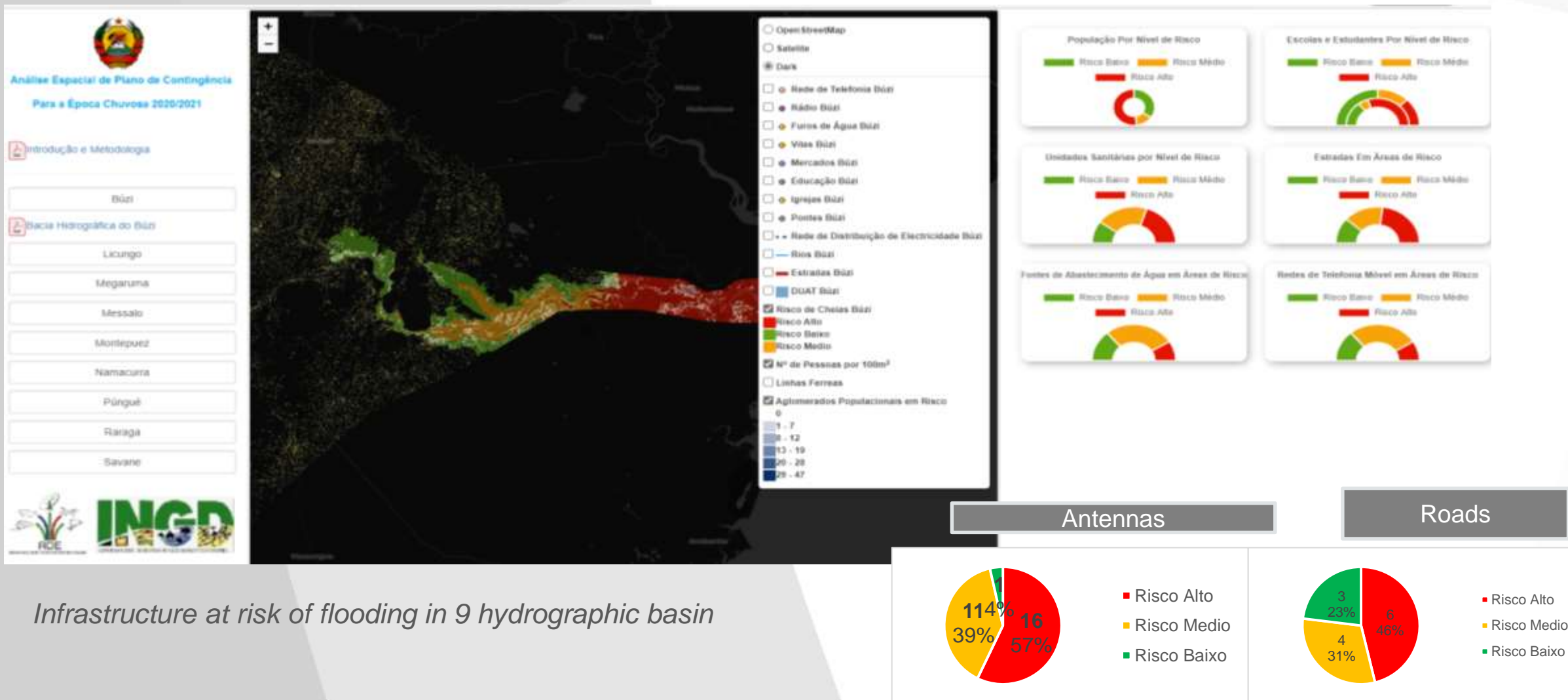
Companies enhance and optimize their services and processes to help solve client's challenges. Example:

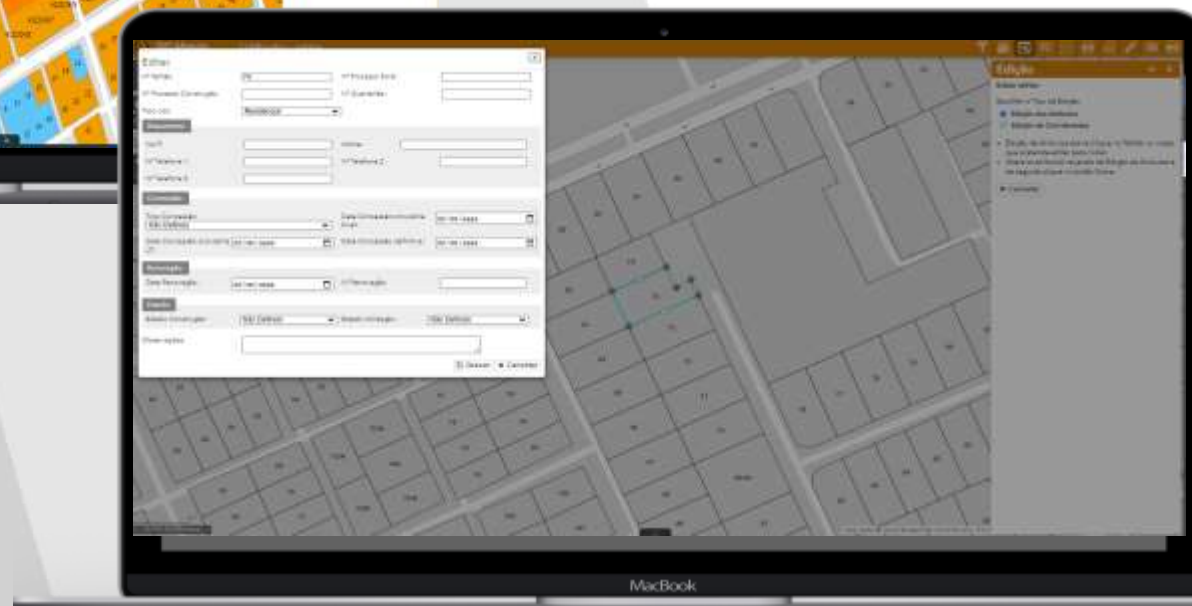
- Roads and bridges management
- Spatial analysis for public health facilities and services
- International aid dashboard
- Public participation (deforestation)



UTILIZATION OF DATA

Spatial analysis of national disaster contingency plan



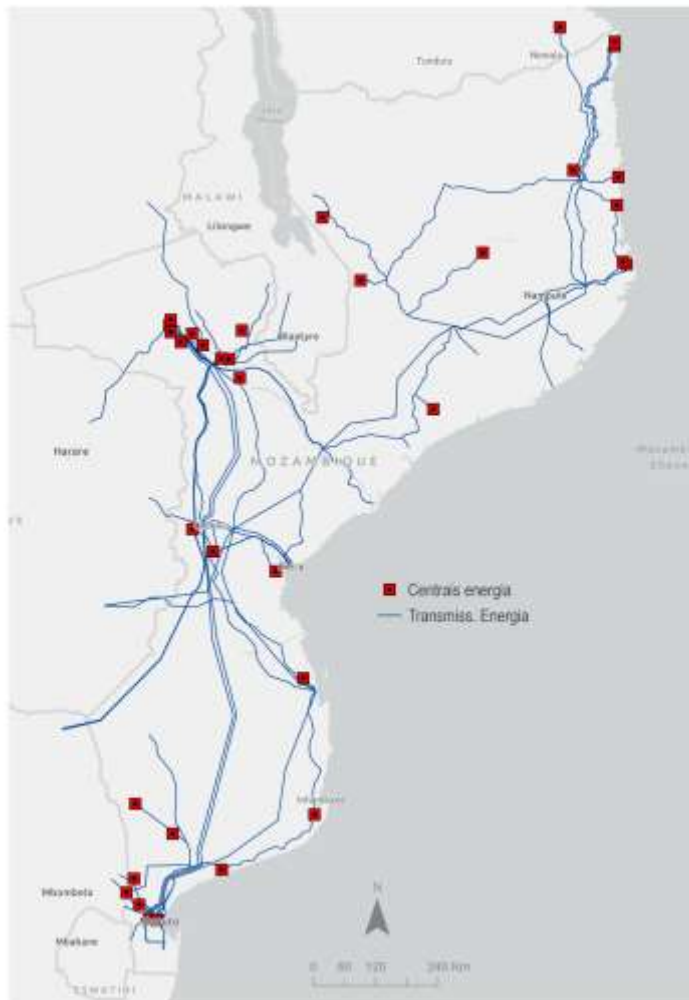


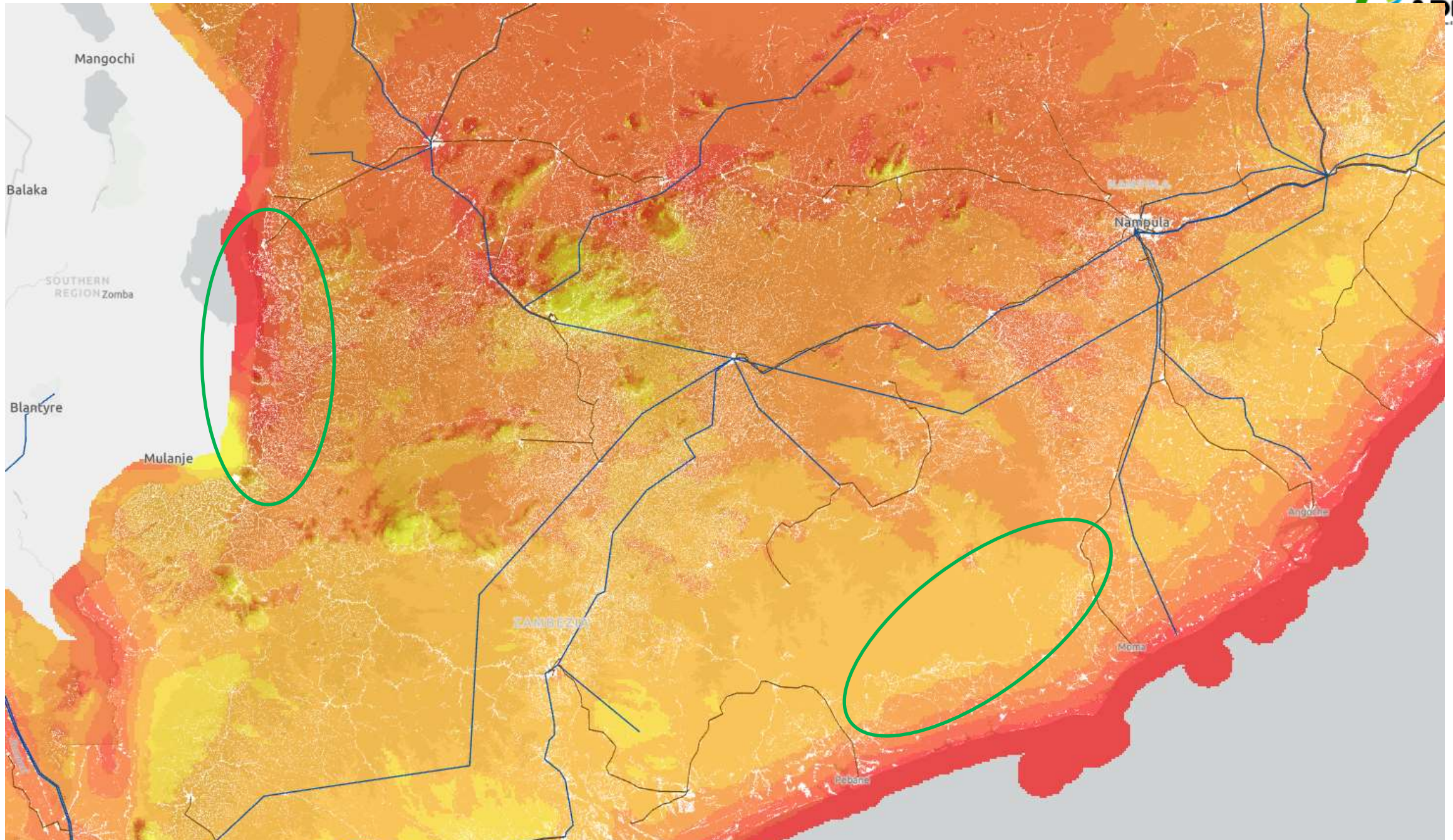
Data Management for Municipal Government:

- **Management** of municipality data (cadastral parcels);
- **Alert emails** and automatic monthly reports;
- **Visualization** of information **customized** to the user needs, by department,
- Automatic **templates** for **topographic maps** based on geometric **relationship** between cadastral parcels



Soluções Geo-Espaciais
Geospatial Solutions





HACK4MOZ



UTILIZATION OF DATA

Hack4Moz 1º Edition 2019 5 Areas of intervention

- ☐ Biodiversity (Agriculture, Forestry and Fisheries)
- ☐ Social (Social Protection and Vulnerable Youth)
- ☐ Financial Inclusion
- ☐ Health
- ☐ Transport and Communications

Total participants : **155**
Number of Teams: **34**
Girls/womans : **31**

Name	Solution
Doko doko	Application for Transport data collection
Dika	Application to facilitate the process of submitting complaints and promoting sexual and reproductive health information
Meu Txi	Application to facilitate personal financial management
Pesca Azul	Application for the marketing of fishery products
Quiz Adolescente	Development of an interactive educational game with information about sexual reproductive health

CHALLENGES

- Poor key primary geodatabases;

Mozambique lacks key geographic database layers, uniform and up to date geodesic network;

- Fragmented landscape of key primary geodata;
- Lack of database hosting and limited capacity of digital data transmission infrastructure;
- Lack of standardization;
- Difficulties in obtaining data with the right metadata.

SDG monitoring and impact evaluation



- ✓ Supported by SDG Alliance
- ✓ To help the country measuring specific achievement and global impact
- ✓ Sharing data for decision making and planning

Key challenges:

- ☐ Technology inclusiveness
- ☐ Direct impact on national planning
- ☐ Data Governance



Promovendo o Planeamento Espacial Integrado

<https://www.mozgis.gov.mz/>

info@pde.gov.mz

(+258)21246000/ 822786940/560