



A Premium Geospatial Industry Conference

CLICK TO KNOW MORE

A dense forest of tall evergreen trees, possibly spruce or fir, is shrouded in a thick, ethereal mist. The trees are dark green, and the mist is a pale, hazy white, creating a soft, atmospheric effect. The lighting is diffused, with no sharp shadows, giving the scene a serene and somewhat mysterious quality. The trees are packed closely together, filling the entire frame.

AISTECH

access to intelligent space technologies





The ~~Global~~ society is changing

UNCONTROLLED WILDFIRES CAUSE LARGE SCALE DAMAGE

Annual losses per year across Europe alone:

480.000 hectares
of irreplaceable land
burned

€3 Billion
in economic losses

34 firefighters
lose their lives

15 Million Tonnes of CO₂
are released into the
atmosphere

*Data from the European Commission

Secondary effects of uncontrolled wildfires:

Accelerated
climate change

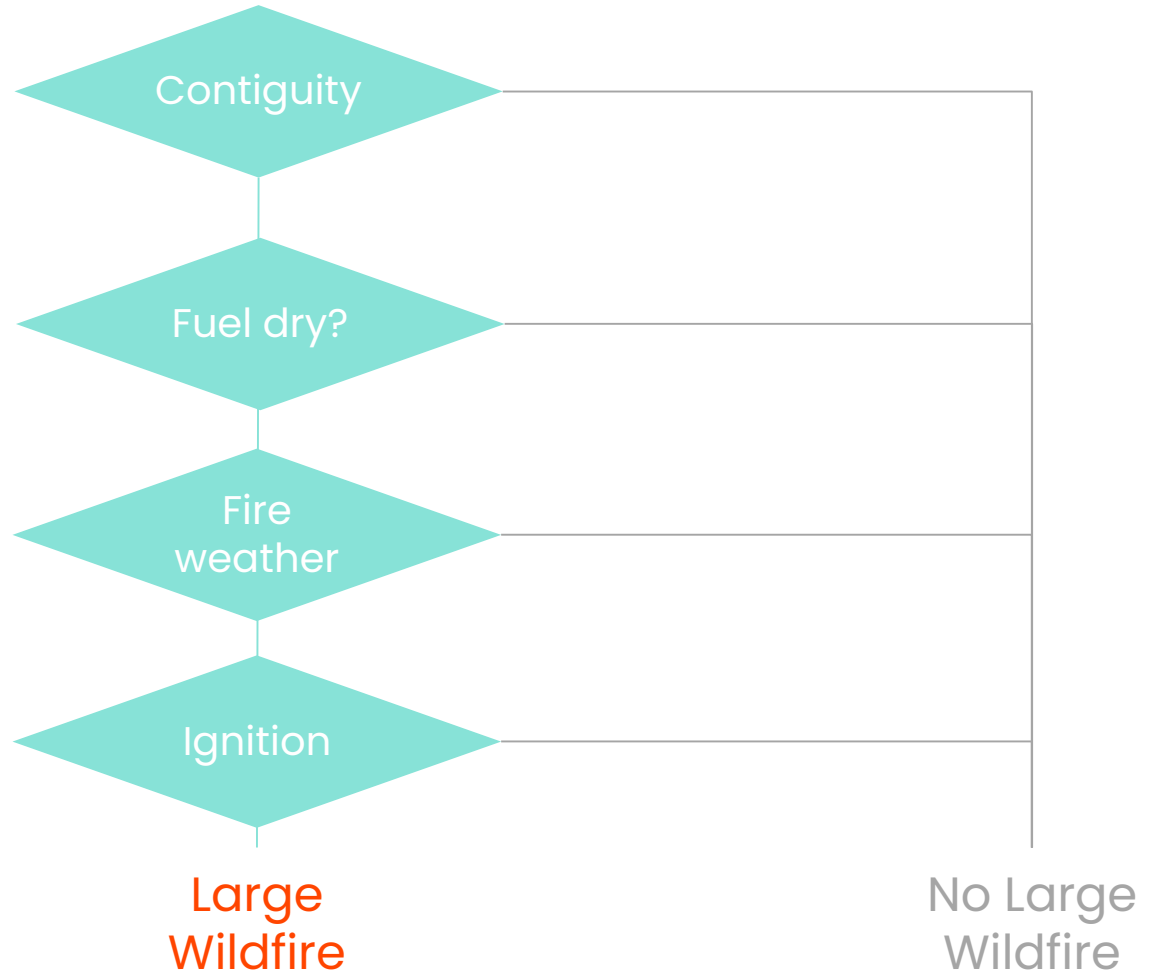
Loss of
biodiversity

Long-term
public health problems

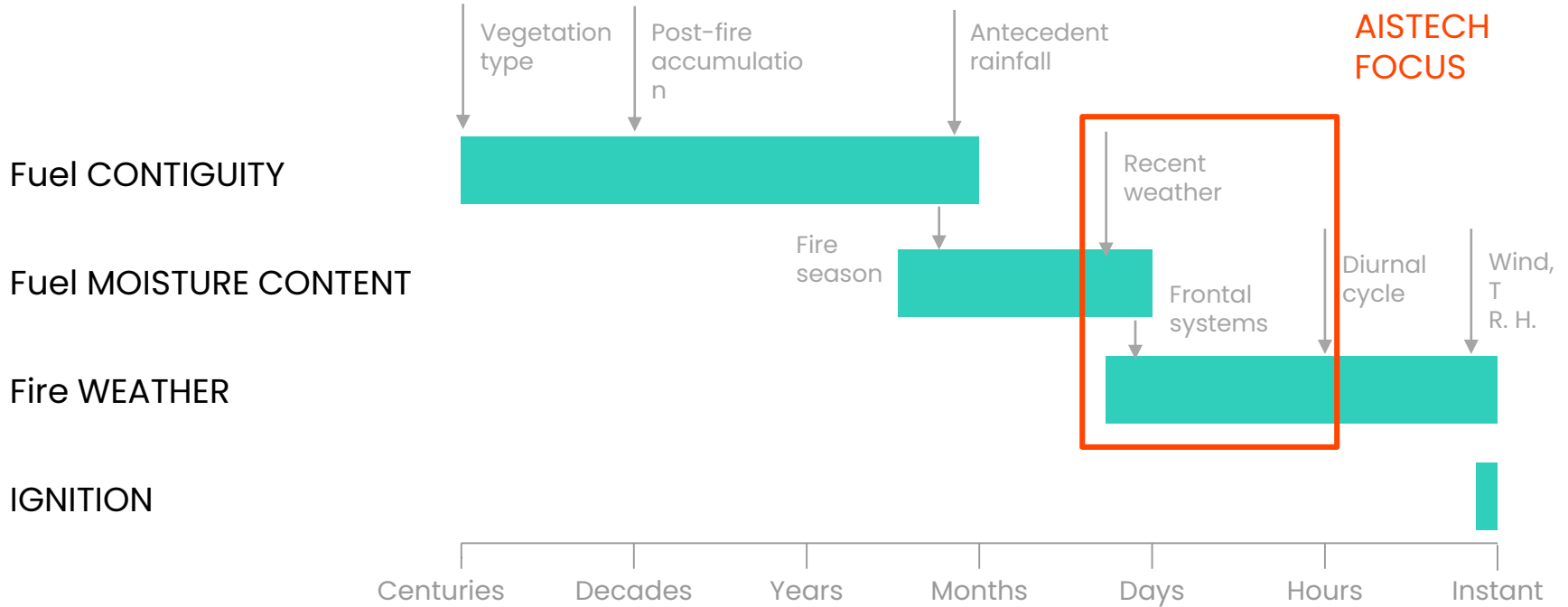
Reduced agricultural
production capacity



SWITCHES



TEMPORAL SCALES



OUR UNIQUE SOLUTION GIVES YOU MORE



Accurate

Aistech's satellites can monitor areas with more resolution than available public satellite imagery, and no commercial options exist



Frequent

The Aistech satellite launching in 2022 will be the first commercial mission capable of providing HR TIR imagery on demand anywhere in the world



Affordable

Satellite imagery can cover large areas recurrently at a fraction of the price of drone imagery



Scalable

Satellites don't require permits or the man-hours needed to operate drones, and are non-intrusive

Our imagery provides 20X more detail



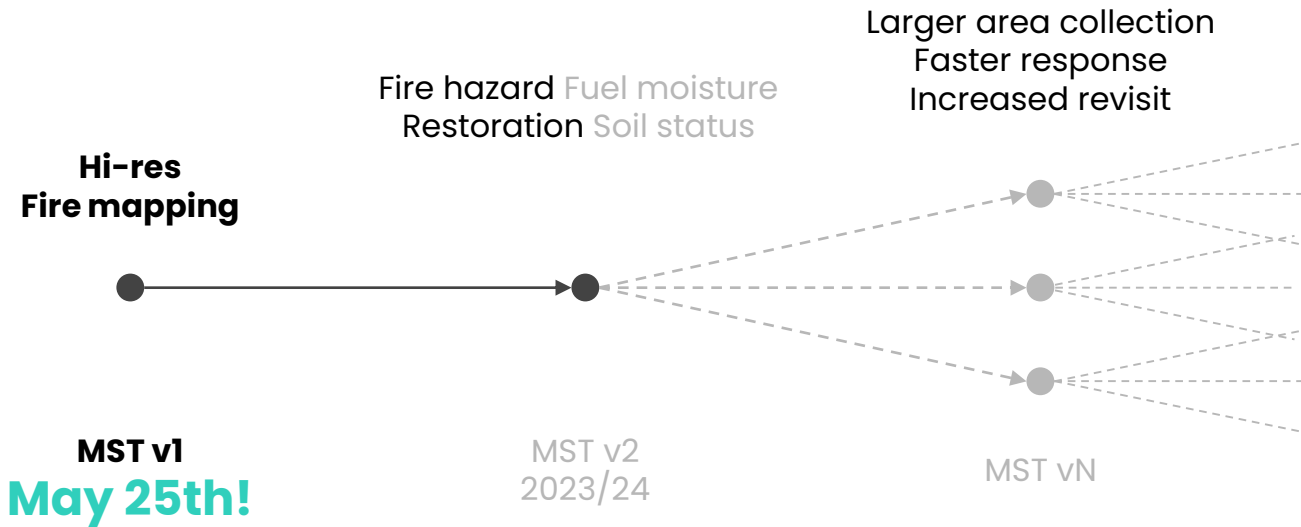
Publicly available thermal imagery



Aistech's high-resolution thermal imagery



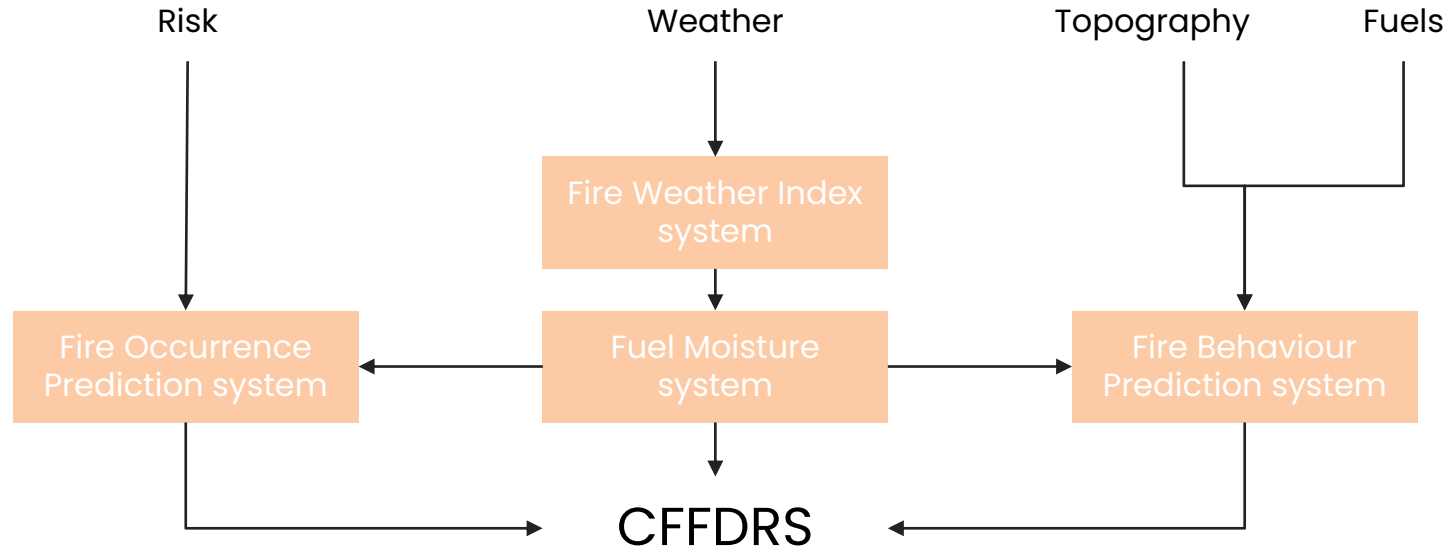
STATUS AND SERVICE EVOLUTION



DRIVEN BY USER INPUT

Let's walk before we run

EXAMPLE FIRE DANGER SYSTEM: CANADA



Fire management tools and applications



FUEL MOISTURE CONTENT MEASUREMENT

FIELD WORK

CALIBRATED STICKS

METEO VARIABLES

V.S.

REMOTE SENSING

- Larger scales
- Spatially explicit
- Cost effective

TOGETHER WE GO FURTHER

How do you get fitness-for-purpose on a novel product?

TIGHTEN FEEDBACK LOOP

- Collaborations with Academia to **show value**
- Partnerships with authorities to **validate data and solutions**
- Rinse and repeat

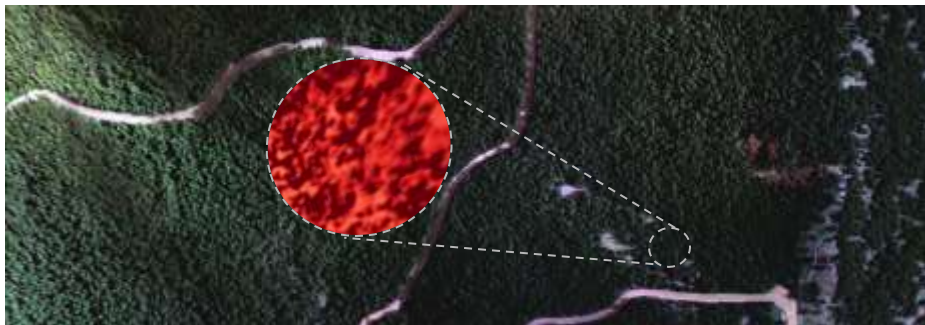


Image: High Resolution Thermal Imagery - Fire Risk Proof of Concept, San Julián de Loria, Andorra



Universitat de Lleida



GEO BCN

Geociències Barcelona - CSIC



ANDORRA
RECERCA +
INNOVACIÓ



SOPFEU
Société de protection
des forêts contre le feu

Ministère des Forêts,
de la Faune
et des Parcs

Québec





One degree at a time.

