



A Premium Geospatial Industry Conference

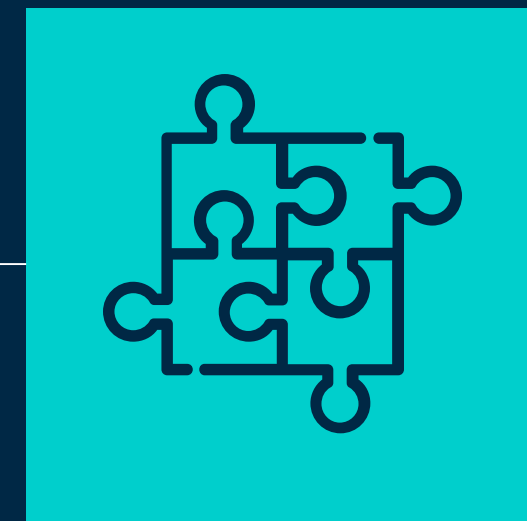
CLICK TO KNOW MORE

Knowledge to answer geospatial issues

Breylla Campos Carvalho

Census Analyst (IBGE)

HOW TO REIMAGINE GEOSPATIAL FRONTIERS?



01

KNOWLEDGE



02

QUALIFICATION
AND EXPERTISE



03

COLLABORATIVE
EFFORT

1. KNOWLEDGE

- How to monitor environmental, social, and economic dynamics?



1. KNOWLEDGE

- How to monitor environmental, social, and economic dynamics?
- What is important to map when you want to count the population?



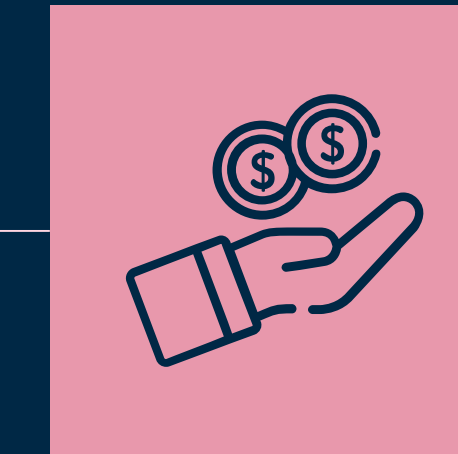
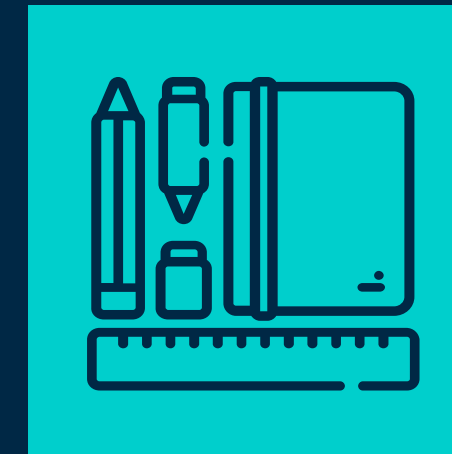
1. KNOWLEDGE

- How to monitor environmental, social, and economic dynamics?
- What is important to map when you want to count the population?
- How to help produce the mapping of a standardized territorial base?



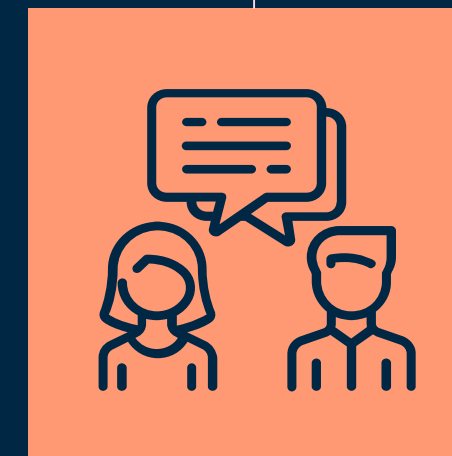
2. QUALIFICATION AND EXPERTISE

Access to
education



Investment in
infrastructure

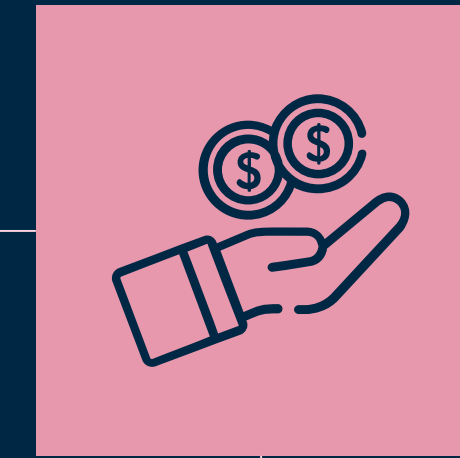
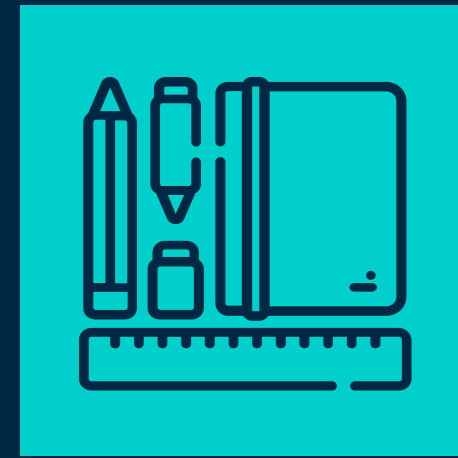
Gender
equality



Commitment
to reality

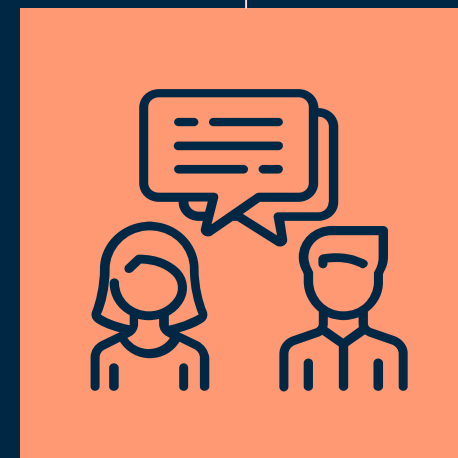
2. QUALIFICATION AND EXPERTISE

Access to education



Investment in infrastructure

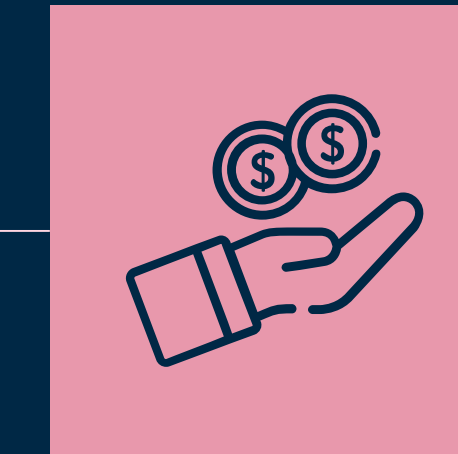
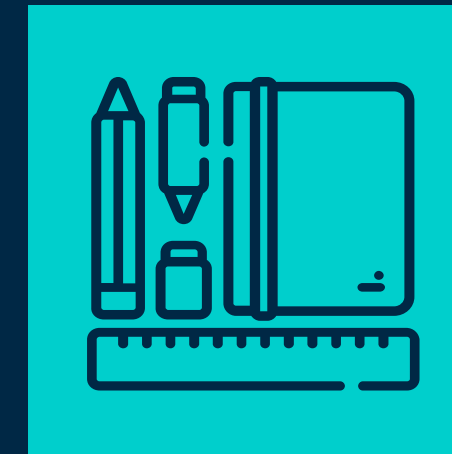
Gender equality



Commitment to reality

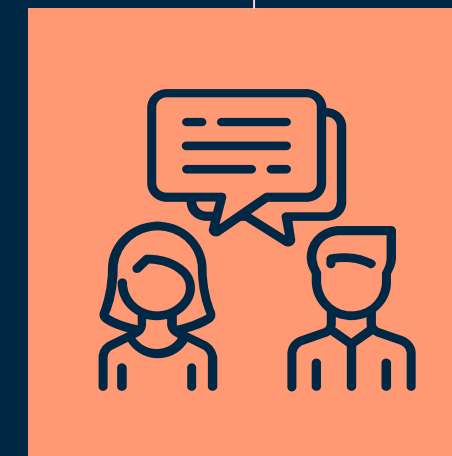
2. QUALIFICATION AND EXPERTISE

Access to
education



Investment in
infrastructure

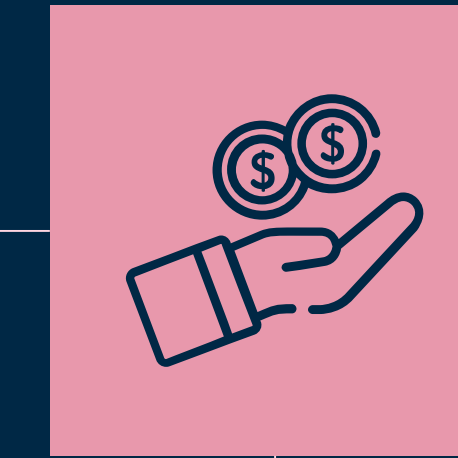
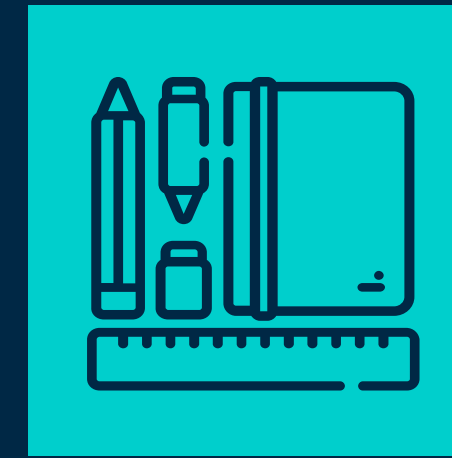
Gender
equality



Commitment
to reality

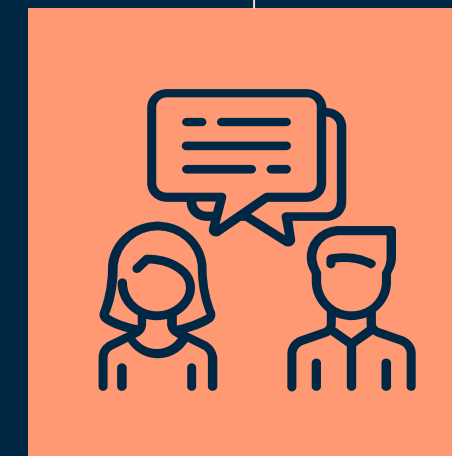
2. QUALIFICATION AND EXPERTISE

Access to
education



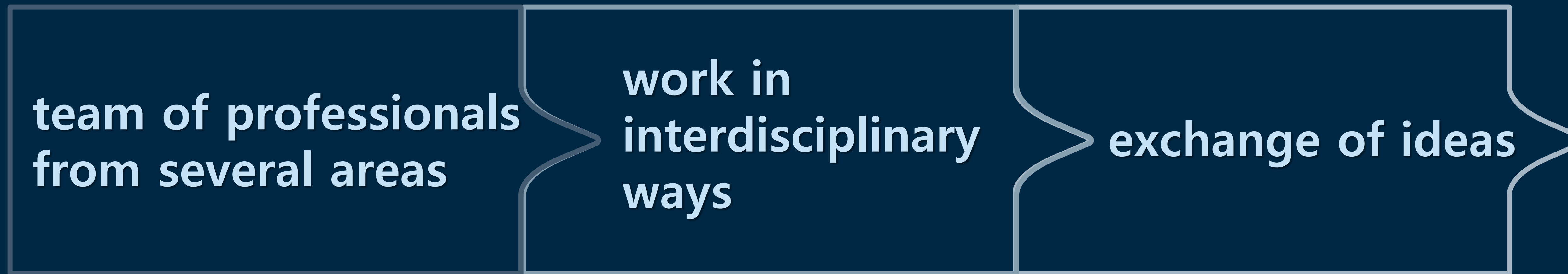
Investment in
infrastructure

Gender
equality



Commitment
to reality

3. COLLABORATIVE EFFORT



“The more diversity you have in the data or in the types of people working on a problem then the better the probability of getting closer to the answer.”

–Dawn Wright (Chief scientist at ESRI)

THANK YOU! OBRIGADA!

Do you have any questions?

 breylla.carvalho@ibge.gov.br

 breylla@gmail.com

 [bre_campos](https://twitter.com/bre_campos)