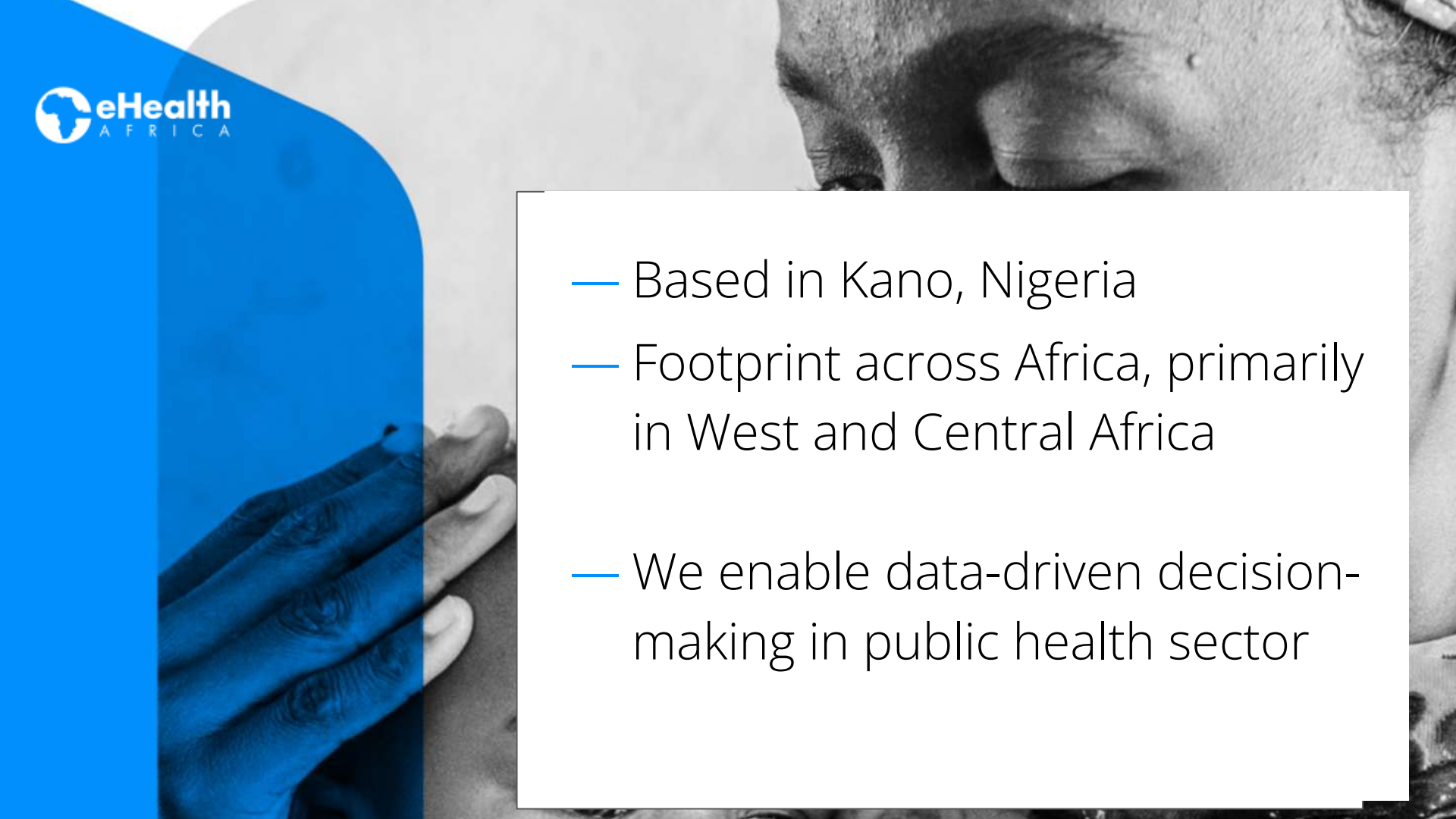
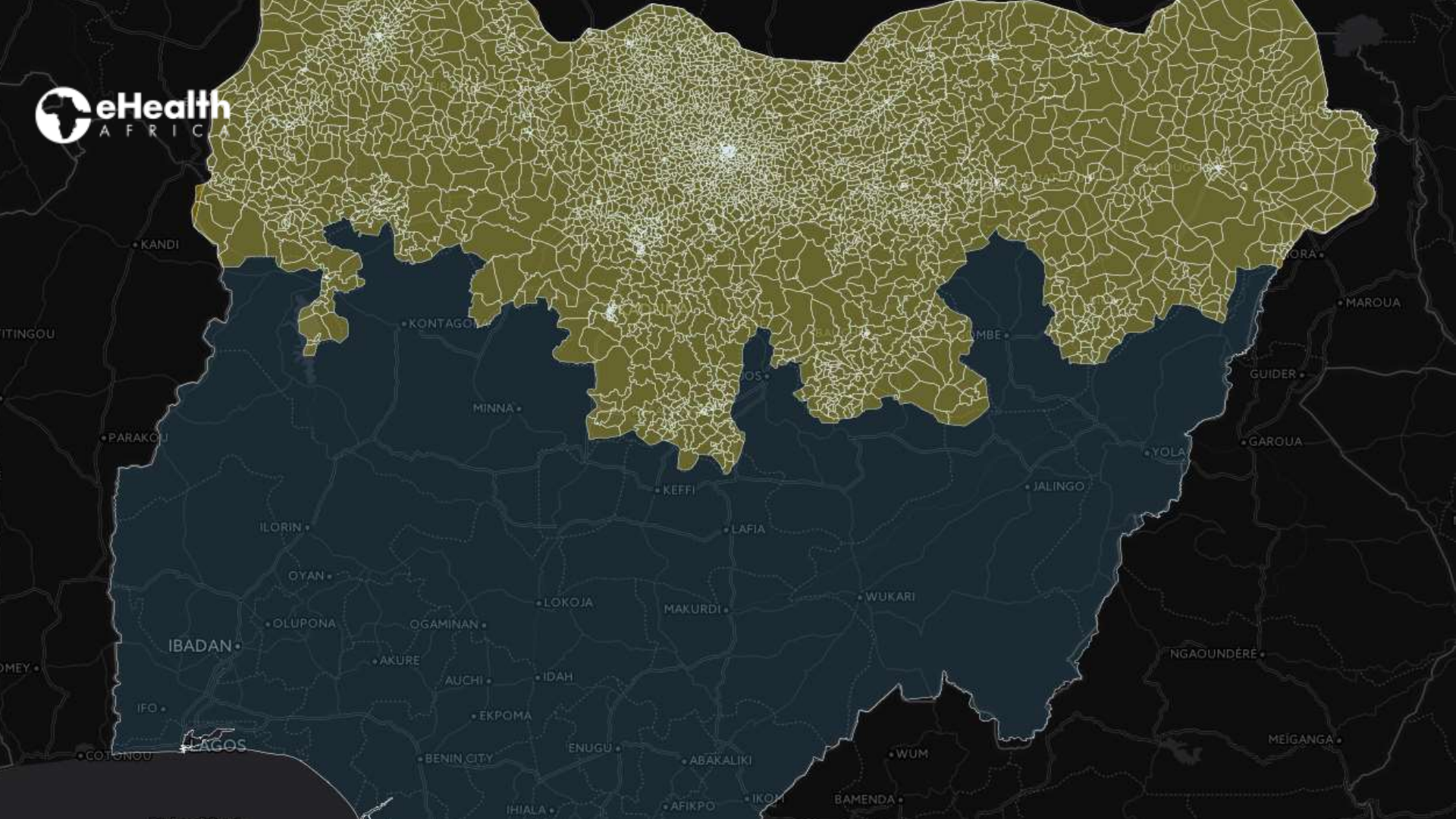


Democratizing Exploratory Access to and Reuse of Existing Geospatial Data Across Nigeria using an Open Access Data Portal

Uche O. Ajene

- 
- A black and white photograph of a person's face, looking down, with their hand resting on their forehead. The image is partially obscured by a blue vertical bar on the left side of the slide.
- Based in Kano, Nigeria
 - Footprint across Africa, primarily in West and Central Africa
 - We enable data-driven decision-making in public health sector



• KANDI

• ITINGOU

• MAROUA

• KONTAGO

• MBE

• KORO

• GUIDER

• PARAKOJI

• MINNA

• GAROUA

• YOLA

• ILORIN

• KEFFI

• JALINGO

• OYAN

• LAFIA

• WUKARI

• OLUPONA

• OGAMINAN

• LOKOJA

• MAKURDI

• IBADAN

• AKURE

• AUCHI

• IDAH

• NGAOUNDÈRE

• IFO

• EKPOMA

• MEIGANGA

• COTENOU

• LAGOS

• BENIN CITY

• ENUGU

• ABAKALIKI

• WUM

• IHIALA

• AFIKPO

• IKOM

• BAMENDA

Mapping Nigeria









583,649 points of interest collected across the country.



140,000 settlements tracked during immunization campaigns using the new maps



25 categories of POIs collected

After polio

Democratizing access to geospatial data for public health planning

[EXPLORE DATASETS](#)

[GENERATE MAPS](#)



Search all datasets...

[OUR IMPACT](#)

[LOCATIONS](#)

[SECTORS](#)

[ABOUT](#)