



Ministry of the Interior and  
Kingdom Relations



Dutch NSDI:  
From 2D key registers  
towards a national 3D  
Digital Twin

GeoSamen2: Smart with  
location  
Corporation Triple Helix  
Democratic ethical principles

Noud Hooyman  
Chief Geo-information officer



**GeoSamen**  
wijs met locatie

## Background

In 2014, government, business and science presented a shared vision on the geo sector: GeoSamen.

We can look back on a great cooperation.

Never before geospatial data is used so often for so many different objectives.

The sector's turnover is, according to recent studies, estimated to be over a billion euros. The indirect impact is estimated to be 35 billion euros.

Geospatial data matters to our society.



## 2021 A new strategy

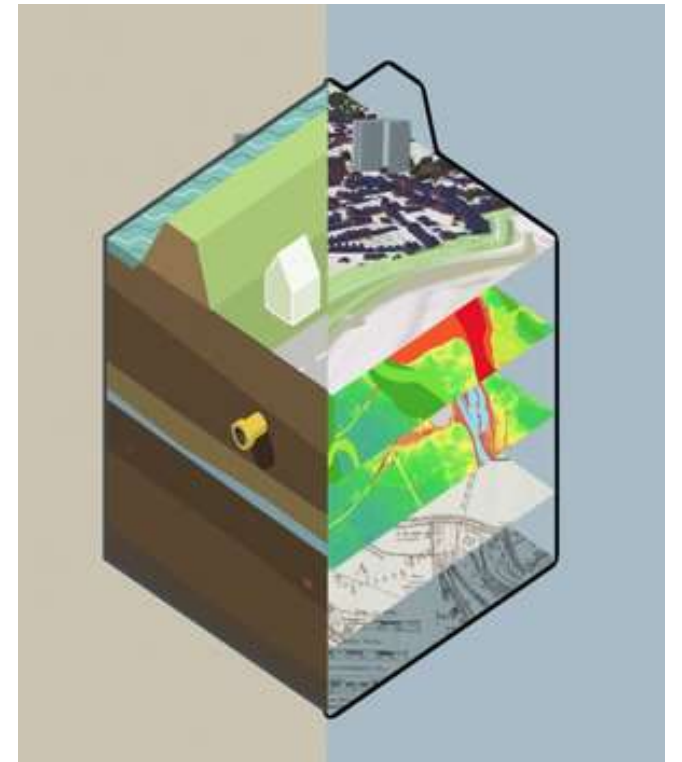
Big data, artificial intelligence and digital twins offer great new possibilities to deal with complex spatially interrelated societal challenges.

Investments in our National Geo Information Infrastructure (NGII) are necessary as well as an ongoing reflection on the ethical handling of the growing amount of data. It is now time for a new national geospatial strategy: **GeoSamen 2.**

This has to fit in with European developments. We can learn from our international colleagues and open up the European market to Dutch successes through mutual standards.

## Key Registers

Four registers with geospatial data are operational.  
The subsurface (BRO) is almost finished and operational:



# Next Step: Joined development in combination and integration in the Generic DI

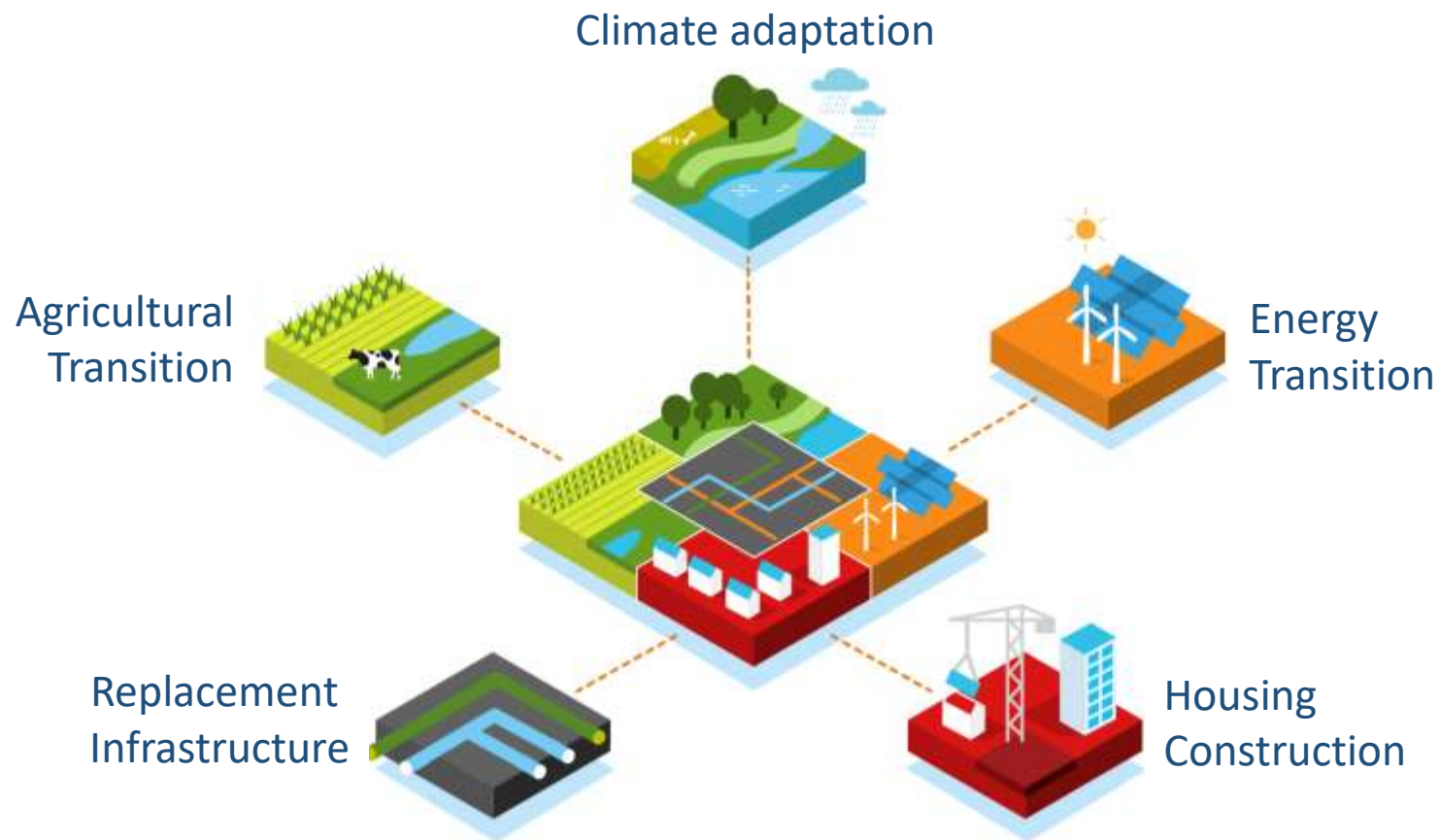


Investment proposal 40 million euro's

Development Dutch National Digital Twin Infrastructure

Stimulating an Ecosystem for use and application

# Digital Twin Physical Living Environment



The Netherlands are working on five major challenges

Social challenges Physical Living Environment