

An aerial photograph of a city street scene with a 3D wireframe overlay on the right side, representing a geospatial data layer. The overlay consists of white lines forming a grid-like structure over the buildings and streets.

Open European Location Services

Abigail Page
Product Development Manager
@abi_edin | abigail.page@eurogeographics.org

63 
members

46 
countries

from the whole of geographical Europe

Members invest over
€1.5B 
each year in the
development of
geo-information

Relied on by
European
Commission
Businesses
& Citizens



Share best practice
through
expert
knowledge
exchange
networks



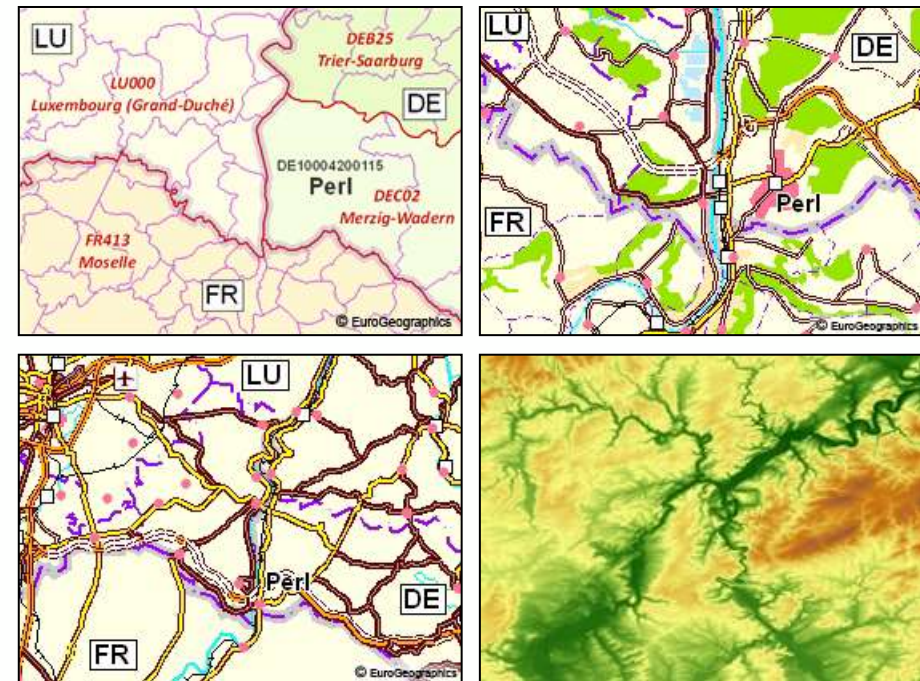
66,000
people and
over are
employed by
EuroGeographics members



Hammonised European geospatial data from official national sources

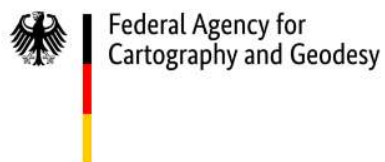
Pan-European product portfolio

- Produced using official geospatial data from our members
- Standardised, transparent, pricing and licensing agreements
- Harmonised to standard specifications for confidence it is consistent, comparable and easily shared



European geospatial data services from official national sources

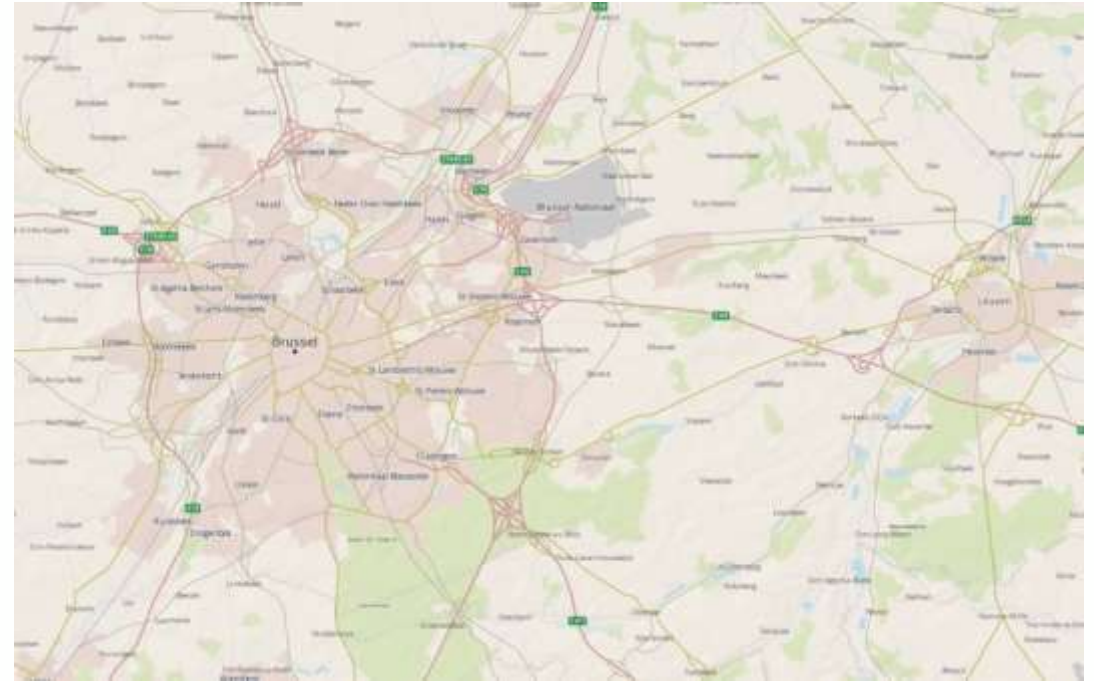
Project Partners



Co-financed by the European Union
Connecting Europe Facility

European Location Services

- A unique and powerful source of harmonised geospatial information
- Embraces new methods of delivery and meets user and market need for authoritative reference data
- Helps tackle the important issues of today and tomorrow, as well as critical applications or the public good



Drivers



New methods of consumption



Fulfil need for Pan-European, authoritative data



European Commission Policy

... wider paradigm shift - expectations from the consumer & market for geospatial data

OpenELS Themes

- OGC Web Feature Service (WFS)*
- Harmonised Specification
- Harmonised Open Data Licence
- Single Access Point
- Free to use

* Cadastral Index Map is supplied as a Web Map Service (WMS)



Address Feature Service

Based on INSPIRE Services from Member States, this service will allow a single access point to addresses through a web feature service.



Building Feature Service

Building footprints for use in visualisations or in combination with your own data for analysis purposes. Supplied as a web feature service.



EuroGlobalMap Feature Service

Pan-European small scale topographic data covering 45 countries and territories. Supplied as a web feature service.



Open Cadastral Index Map

The Open Cadastral Index Map provides a pre-styled representation of cadastral parcels with administrative units, addresses and buildings. Supplied as a web map service.



Open Regional Gazetteer

The Regional Gazetteer provides access to pan-European multilingual geographical names data, in addition to addresses and administrative units. It currently covers 25 countries.

Contact:

abigail.page@eurogeographics.org

Demo available: booth 34 of exhibition