

Voices from Private Sector: Insights for Future NSDI Development in Indonesia

Tandang Yuliadi Dwi Putra, Ryosuke Shibasaki
Institute of Industrial Science, University of Tokyo, Japan
tandang@iis.u-tokyo.ac.jp

Outline

- Overview of Indonesia & it's NSDI
- Geospatial industry in Indonesia
- Perspectives of the private sector
- Insights for future NSDI development
- Conclusion

Overview of Indonesia



1,913,578 km²



16,065 islands

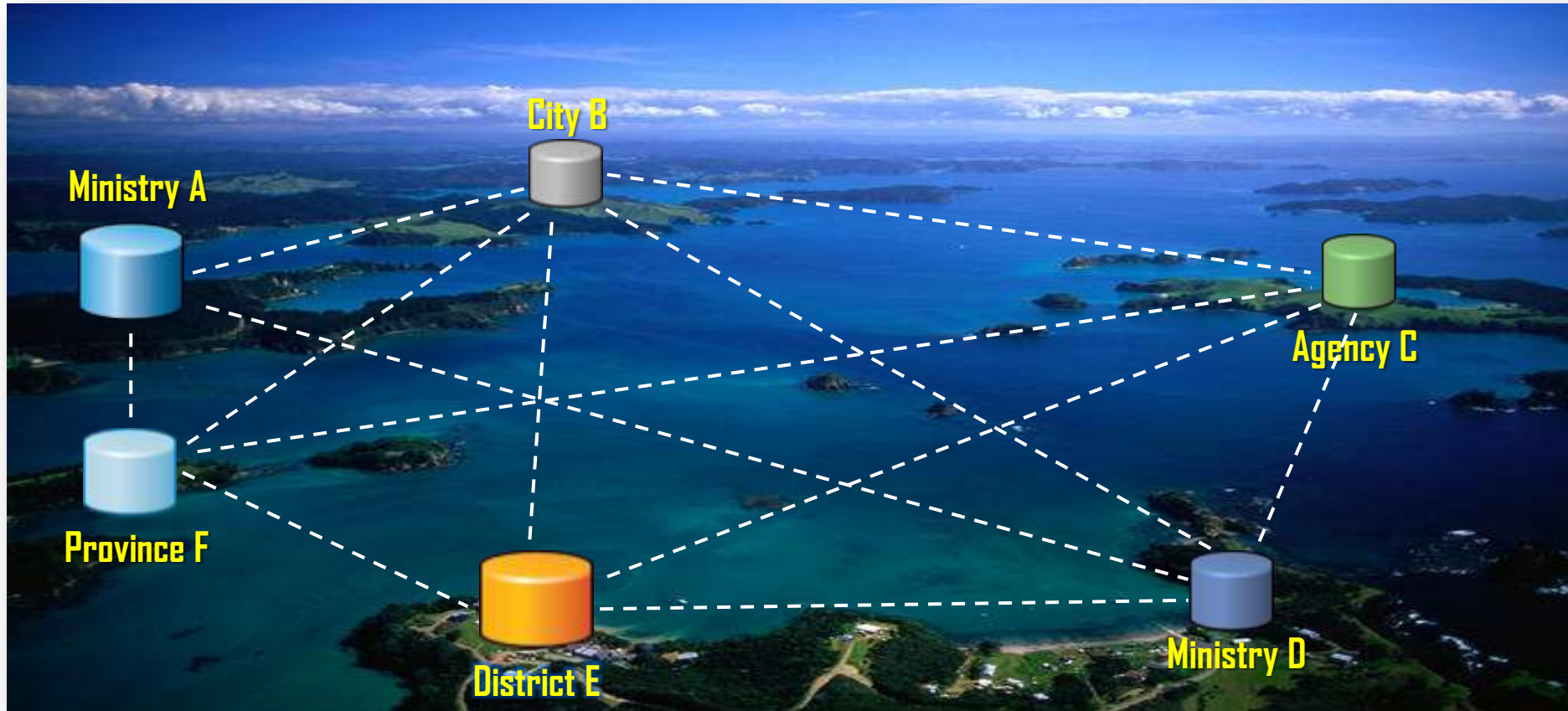


34 Provinces



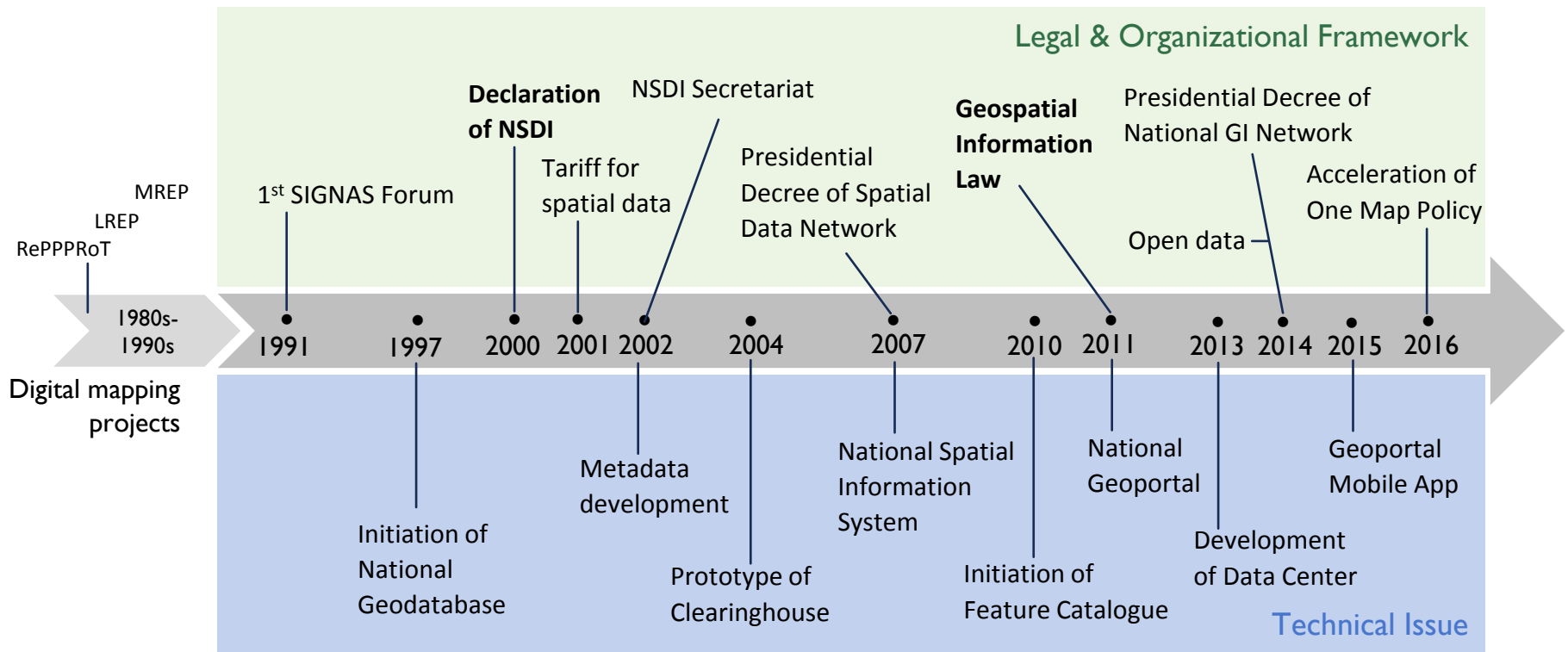
514 Districts/
Cities

Background of Indonesia NSDI



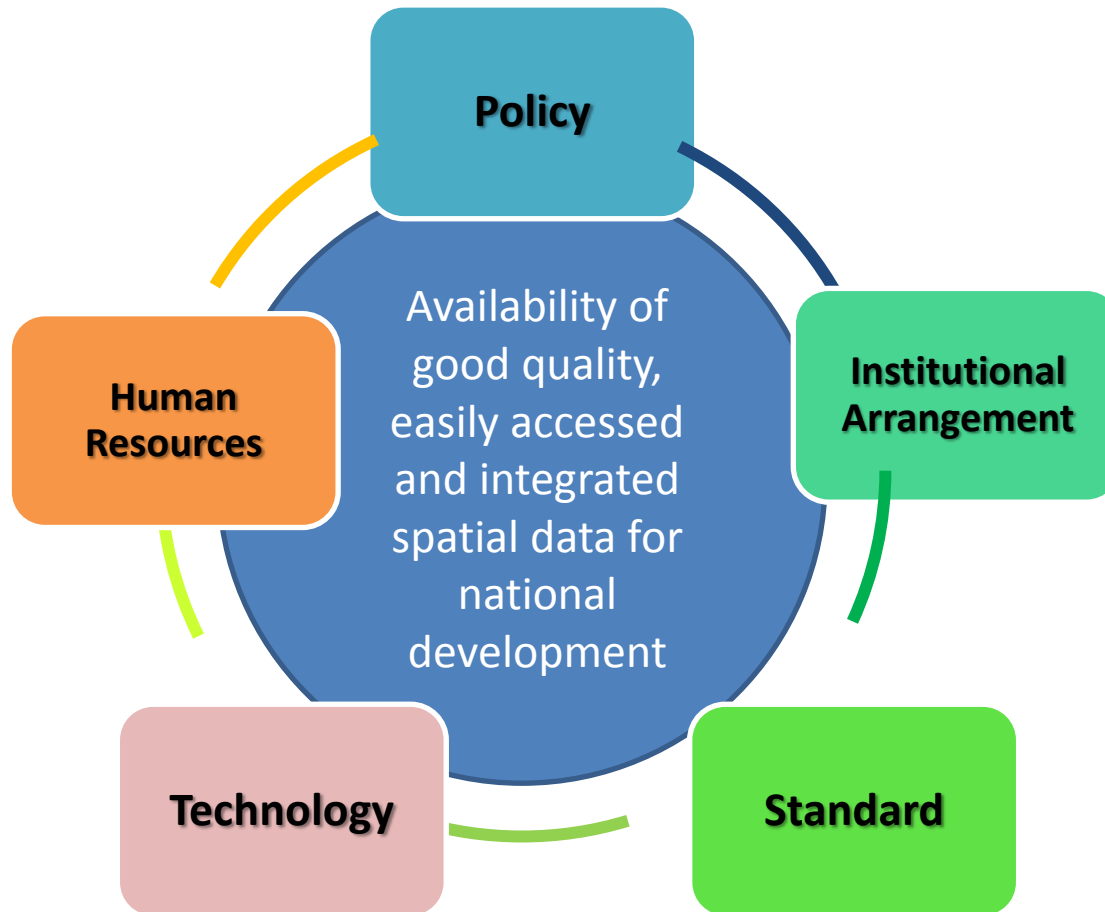
Islands of geospatial data interconnected by NSDI

Indonesia NSDI



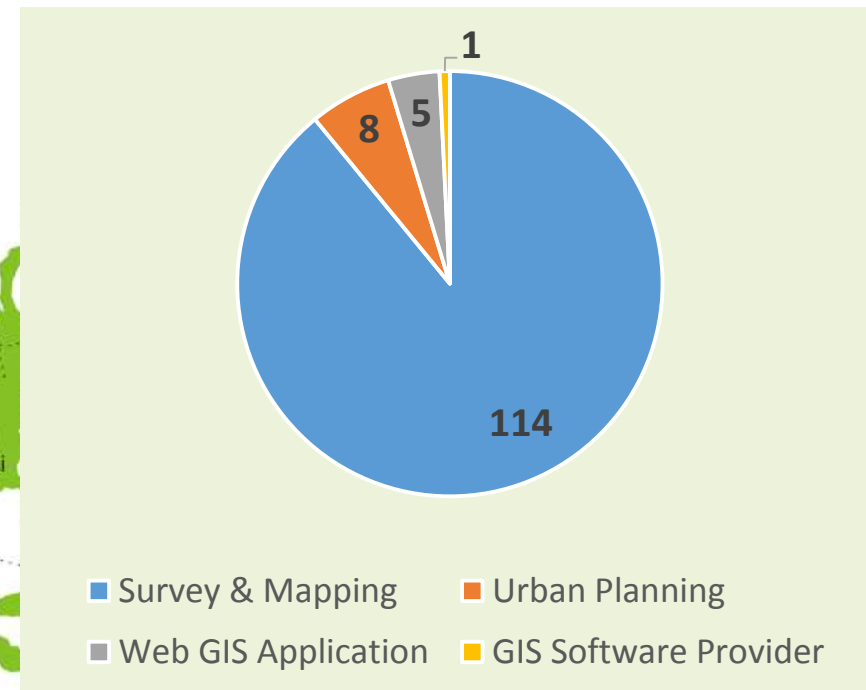
Chronological milestones of NSDI initiative

Principles of Indonesia NSDI



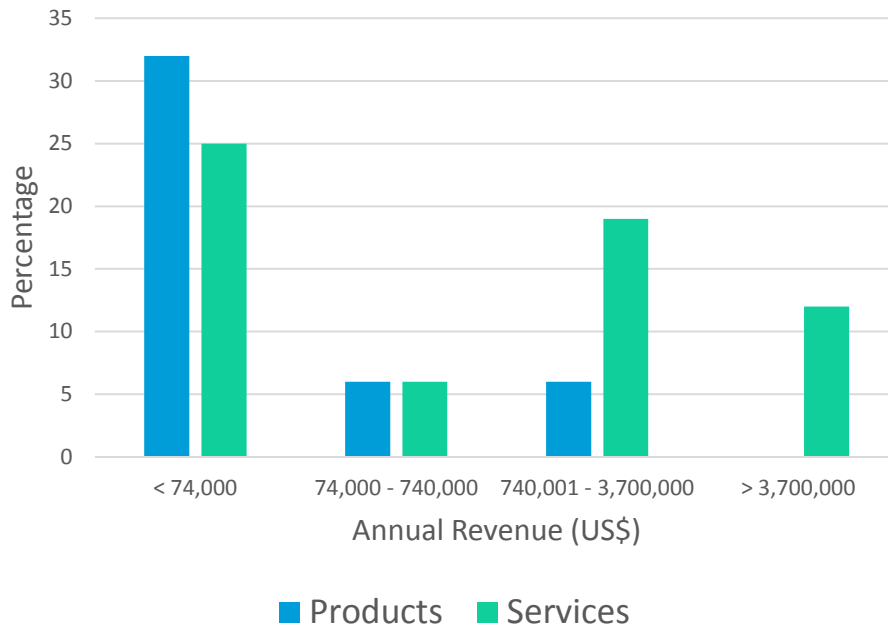
Geospatial Industry in Indonesia

Distribution of 128 registered Geospatial Companies:

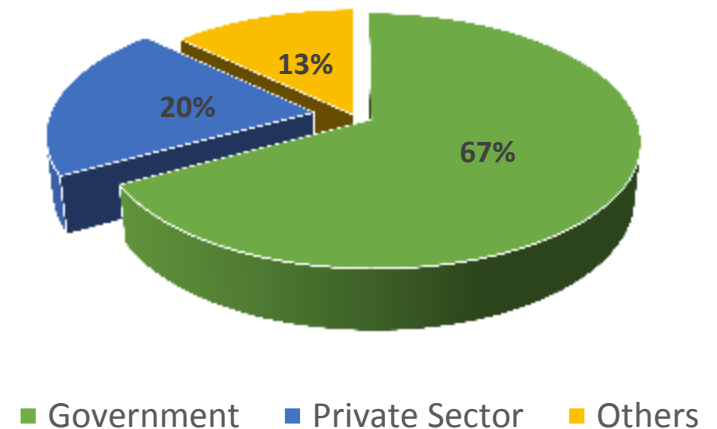


Geospatial Industry in Indonesia

Annual Revenue of the Geospatial Companies

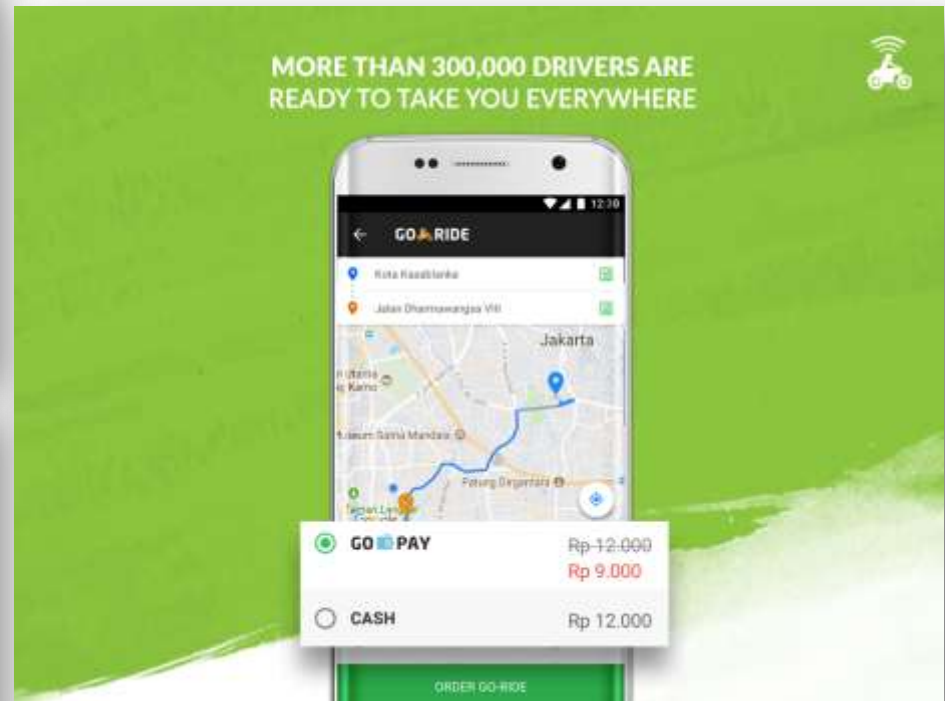


Source of Fund



Geospatial Industry in Indonesia

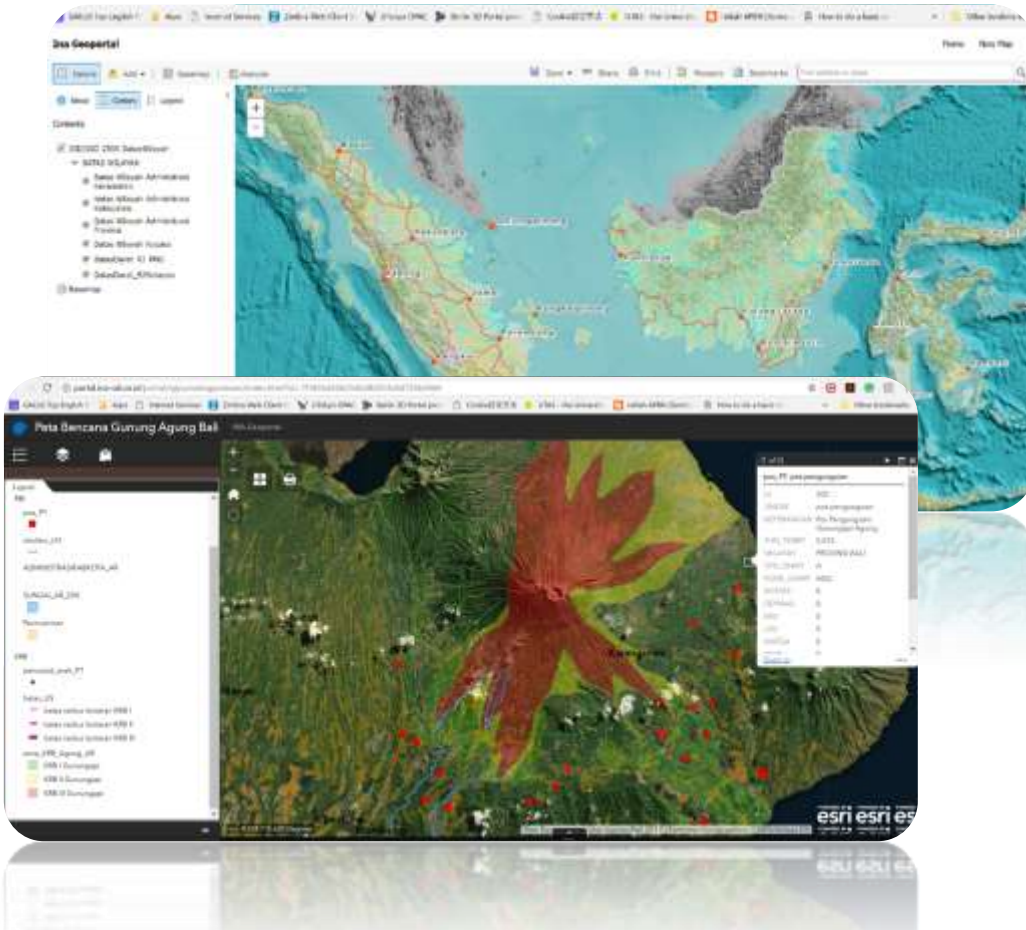
Several companies acknowledged the potential of geoservices:



Perspectives of the Private Sector

Type of Business	Geospatial Data Usage	Applications
GIS software/ platform provider	Public: topographic map, transportation, disaster data Private: HERE map data	Webmapping portal for disaster management, asset management, field operation
Survey & mapping, imagery distributor, Webmapping	Public: topographic map Private: Google maps	Webmap application for local government
GIS application	Public: admin boundary Private: Google maps	GIS application for water utility
Service provider	Public: local government facilities Private: Google maps	City dashboard
Finance/banking	Private: HERE POI data	Dashboard for analysis
Water management	Public: admin boundary Private: satellite image	GIS application for water utility
Survey & mapping, Webmapping	Public: topographic map Private: Google maps	WebGIS for local government, marketing, utility
Online transportation	Private: Google maps	Mobile application

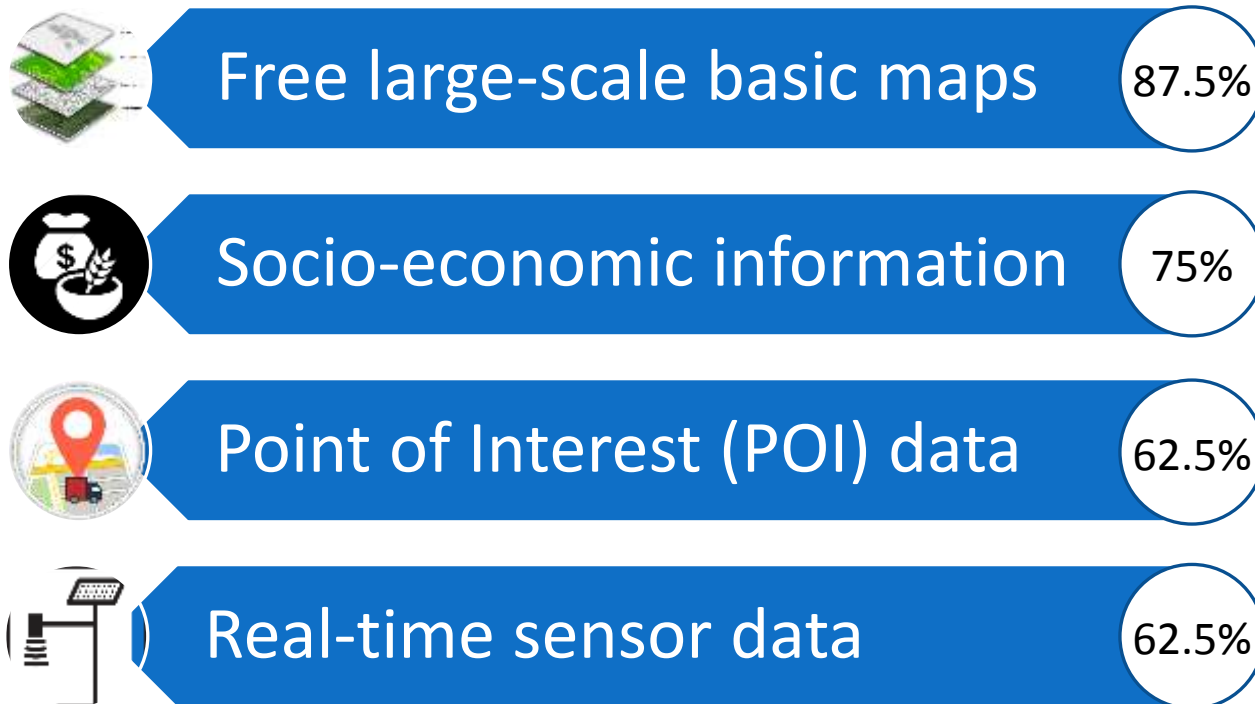
Perspectives of the Private Sector



- ❑ Lack of large-scale geospatial data
- ❑ Limited availability of thematic data/services
- ❑ Low functionality of the national geoportal
- ❑ Reliability issues of the geospatial services from NSDI data provider

Perspectives of the Private Sector

Data/Services Requirements:



Perspectives of the Private Sector

Challenges:

Data

- Providing large-scale fundamental datasets
- Generating thematic data & services

Technology

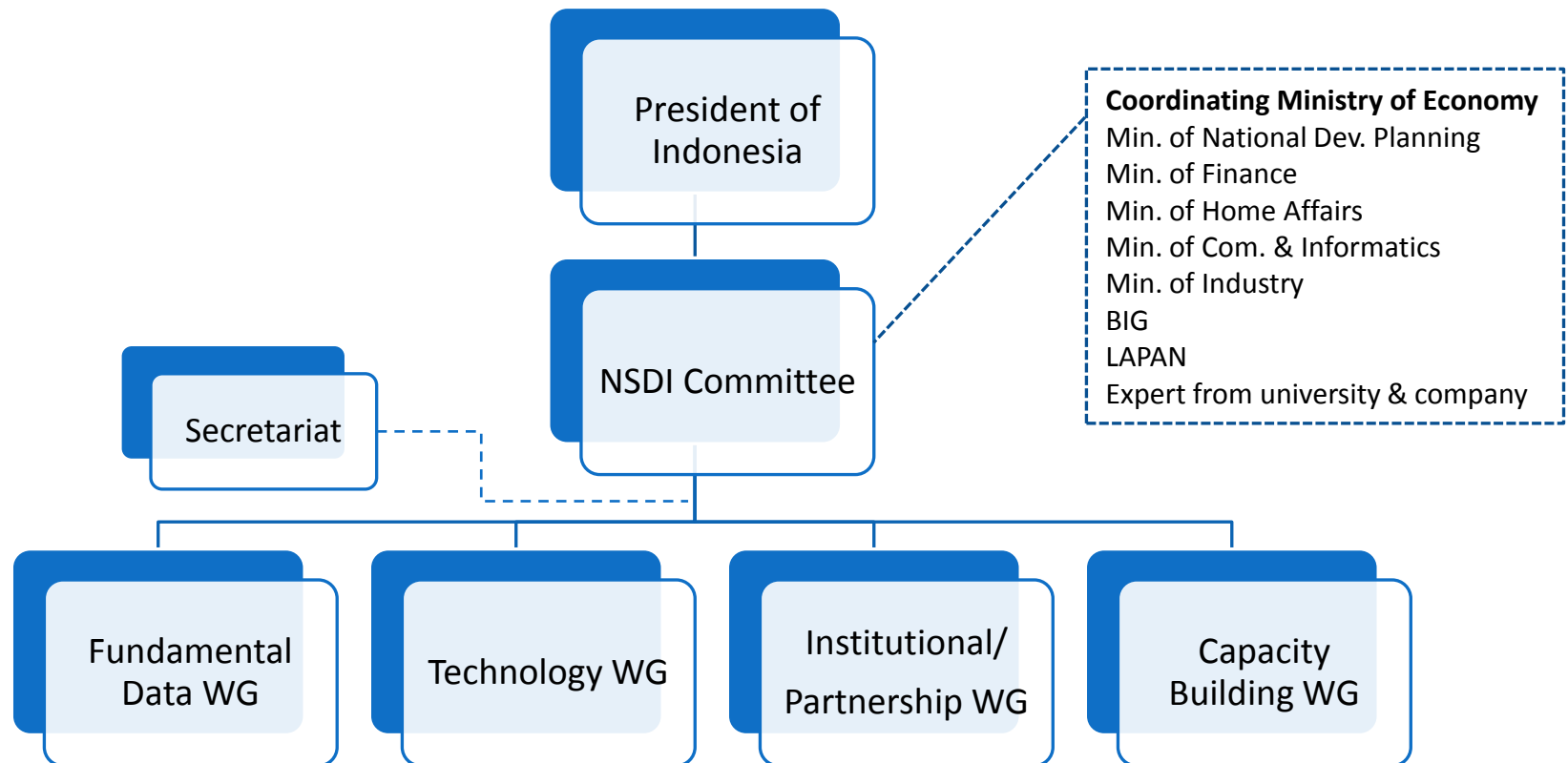
- Improving geoportal platform
- Adopting recent geospatial technologies
- Solving disparity of ICT infrastructure

Human Resource

- Increasing skill & competency
- Nurturing geospatial user & community

Insights for future NSDI development

1. The importance of NSDI Committee



Insights for future NSDI development

2. Encourage company to produce value-added products



Source: bps.go.id

Typical population map

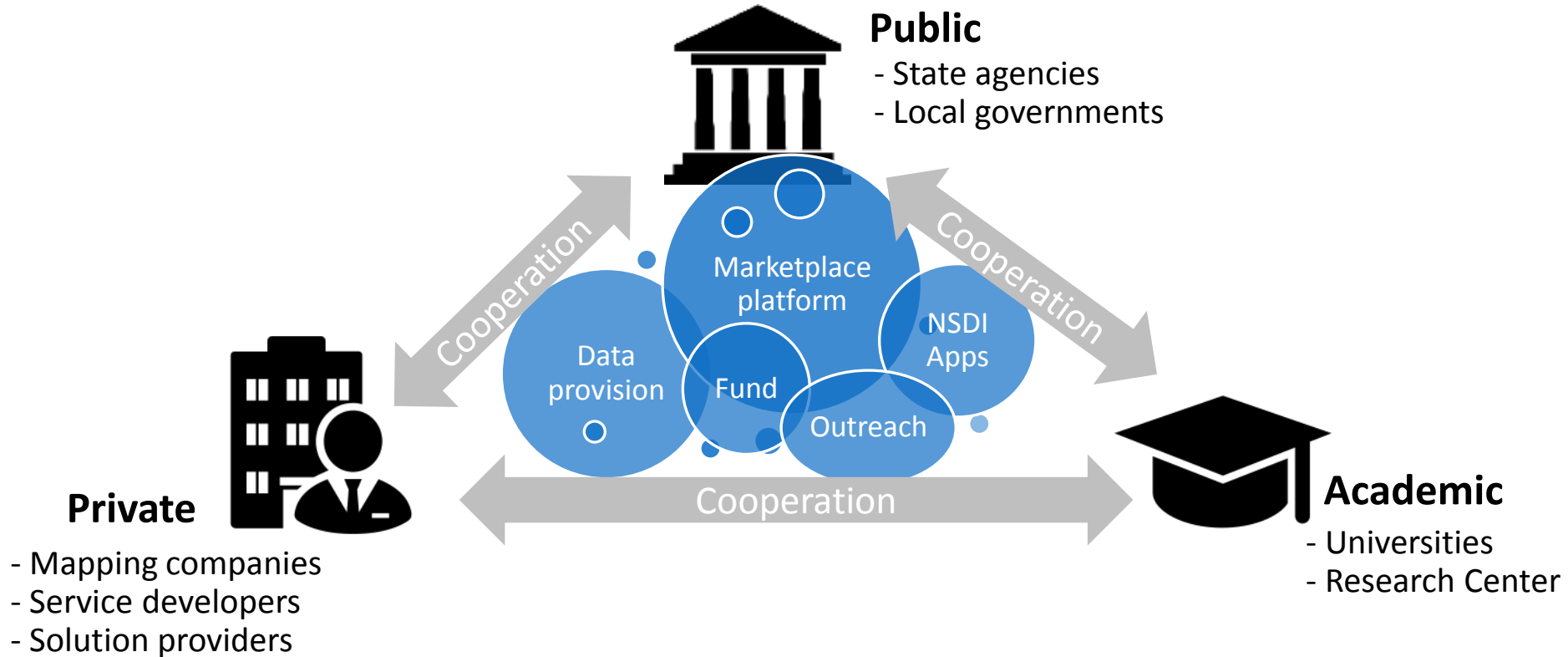


Source: Zenrin at geospatial.jp

Hourly people congestion map

Insights for future NSDI development

3. Promote Public-Private-Academic Partnership



Conclusion

- ❑ NSDI initiative in Indonesia is still focused on data provision and sharing among government institutions, hence companies mainly engaged in survey & mapping
- ❑ NSDI scope and applications need to be broaden to unlock the potential of geoservices for social benefit and enlarge the geospatial industry
- ❑ Geospatial Agency can not solve the challenge of future NSDI alone, innovative business model with private and academia is necessary

Thank you for listening...