

Mapping Groundwater resources

Experience from the Nilgiris

The Nilgiris



Groundwater in the Nilgiris



Groundwater in the Nilgiris

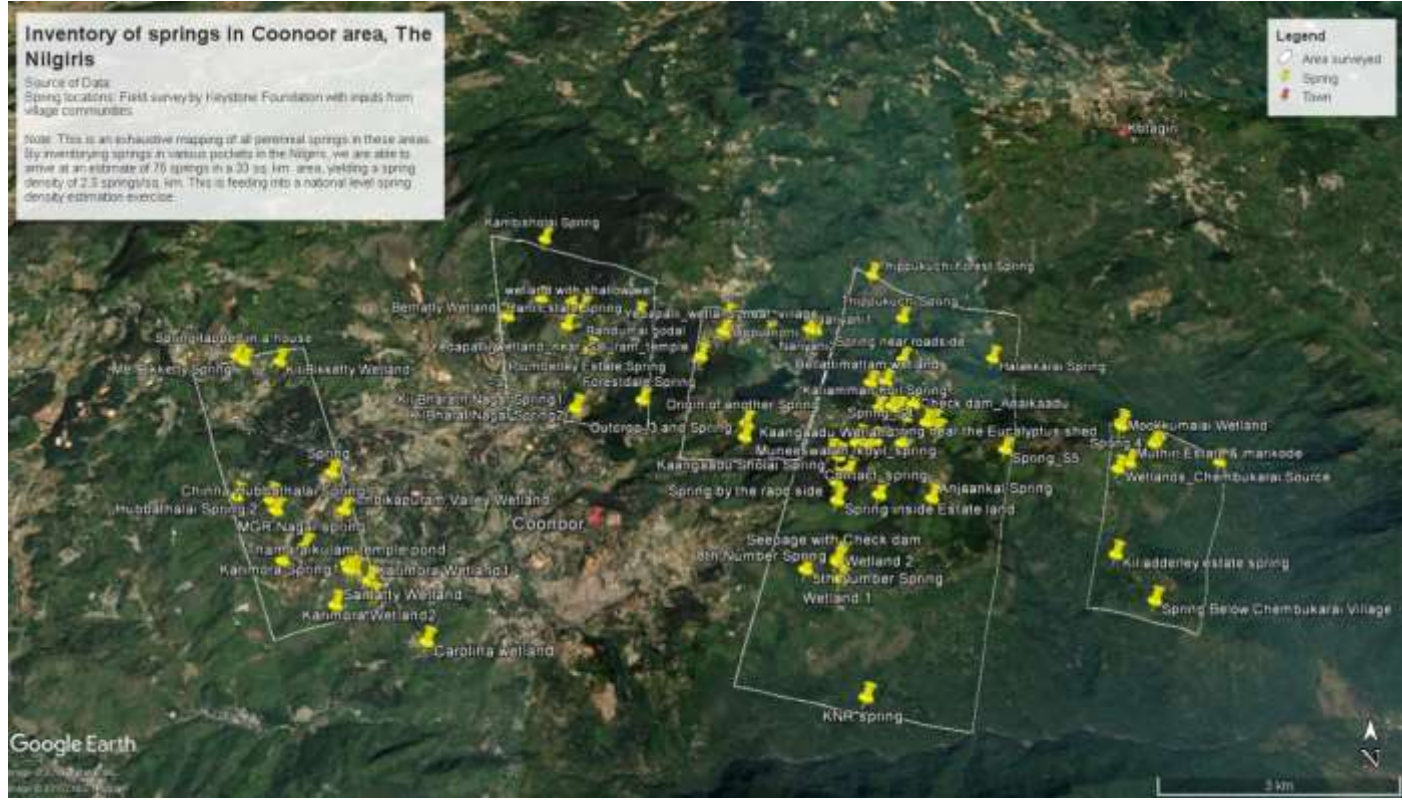


Springs

Inventory of springs in Coonoor area, The Nilgiris

Source of Data:
Spring locations: Field survey by Keystone Foundation with inputs from village communities

Note: This is an exhaustive mapping of all perennial springs in these areas. By inventorying springs in various pockets in the Nilgiris, we are able to arrive at an estimate of 76 springs in a 30 sq. km. area, yielding a spring density of 2.5 springs/sq. km. This is feeding into a national level spring density estimation exercise.



Small Hill Wetlands



Wetland Inventory



Land use and Groundwater

Land Use in the catchment of Elada Wetland

Category	Area (acres)
Tree cover	148
Tea	127
Farming	32
Wetland	14
Others	14
Total	335



Legend

Land Use Categories

- Built-up
- Fallow
- Farming
- Grassland
- Rock outcrop
- Tea
- Tree cover
- Wetland



Note: Derived from Google Earth using the imagery dated 4th Feb 2015.
By Keystone Foundation, Kotagiri.

Efforts on the ground



Conclusion



Thank you

- <http://keystone-foundation.org>
- <http://nilgiriswaterportal.in>
- <http://www.indiawaterportal.org/topics/springs/spring-initiative>