



High resolution imagery for accurate information

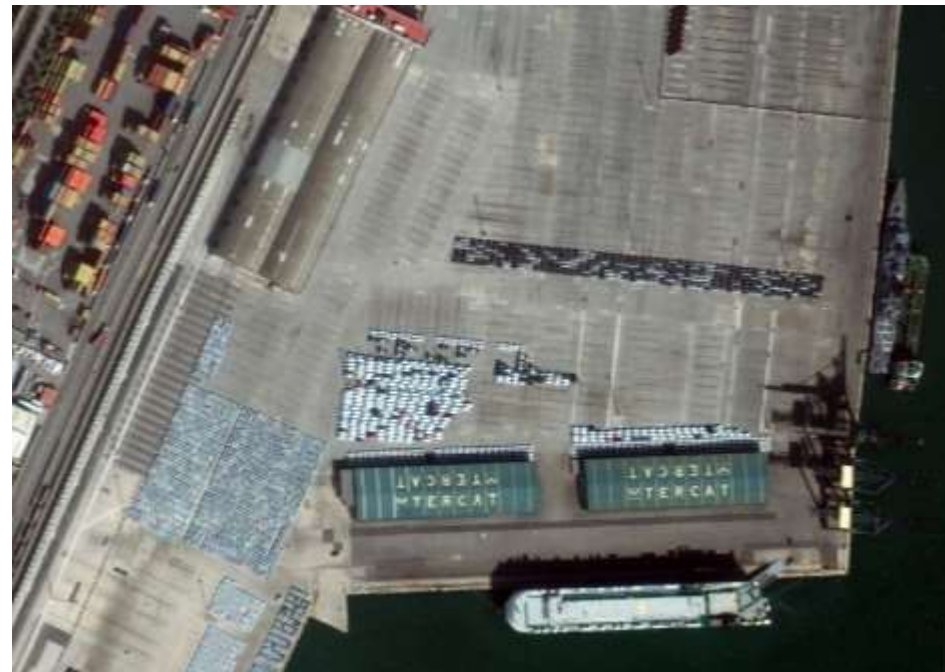
Luca Perletta
Manager, Sales Engineer, EMEAR



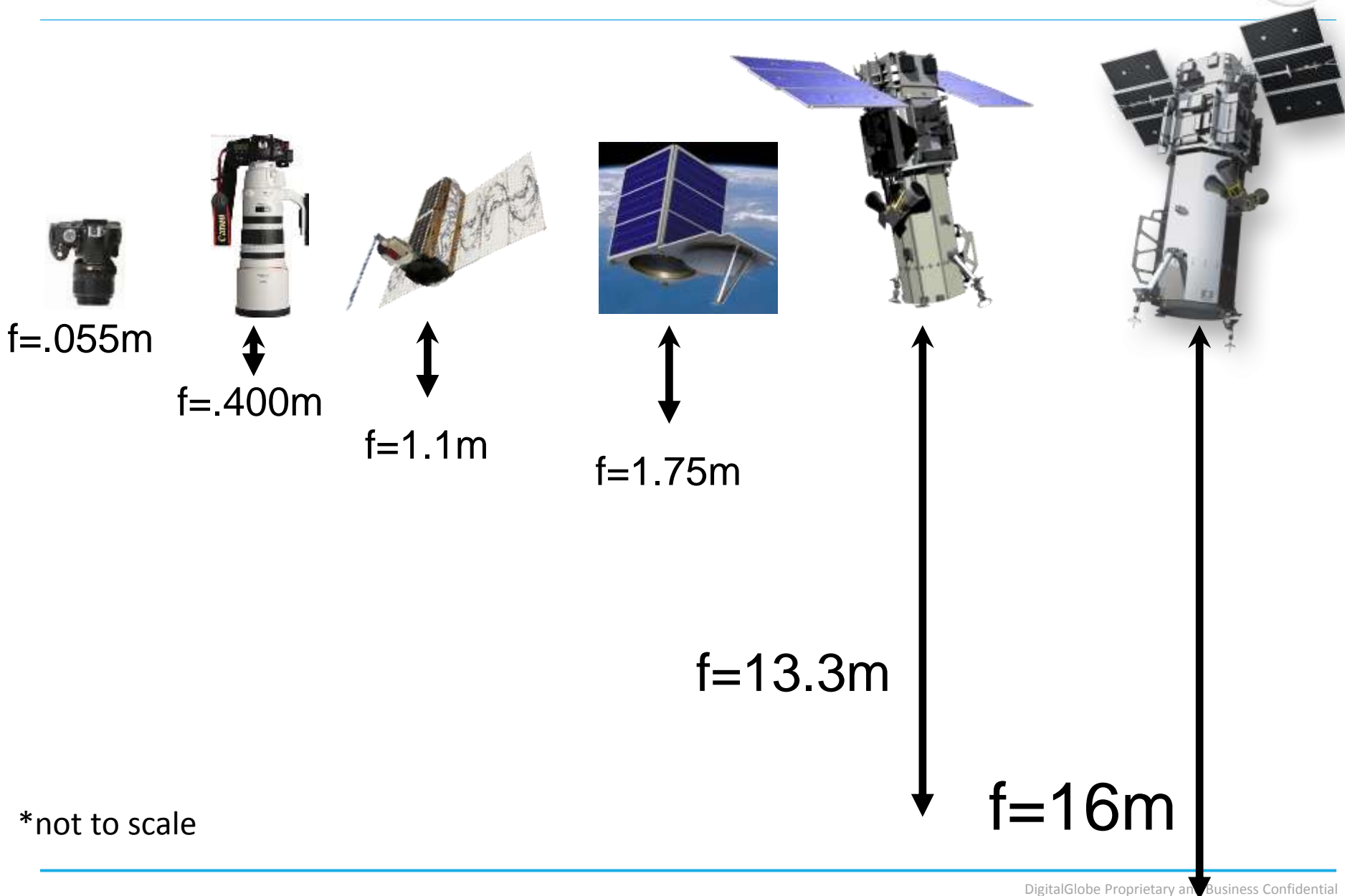
Resolution



$$\text{Resolution} = \frac{\text{Distance}}{\text{Focal Length}} \times \text{Detector Size}$$



Focal length



30 cm resolution



VHR - 2002



RIO DE JANEIRO, BRAZIL | 18 SEPTEMBER 2002 | 80 CM

Google earth

VHR - 2016



RIO DE JANEIRO, BRAZIL | 21 FEBRUARY 2015 | 30 CM

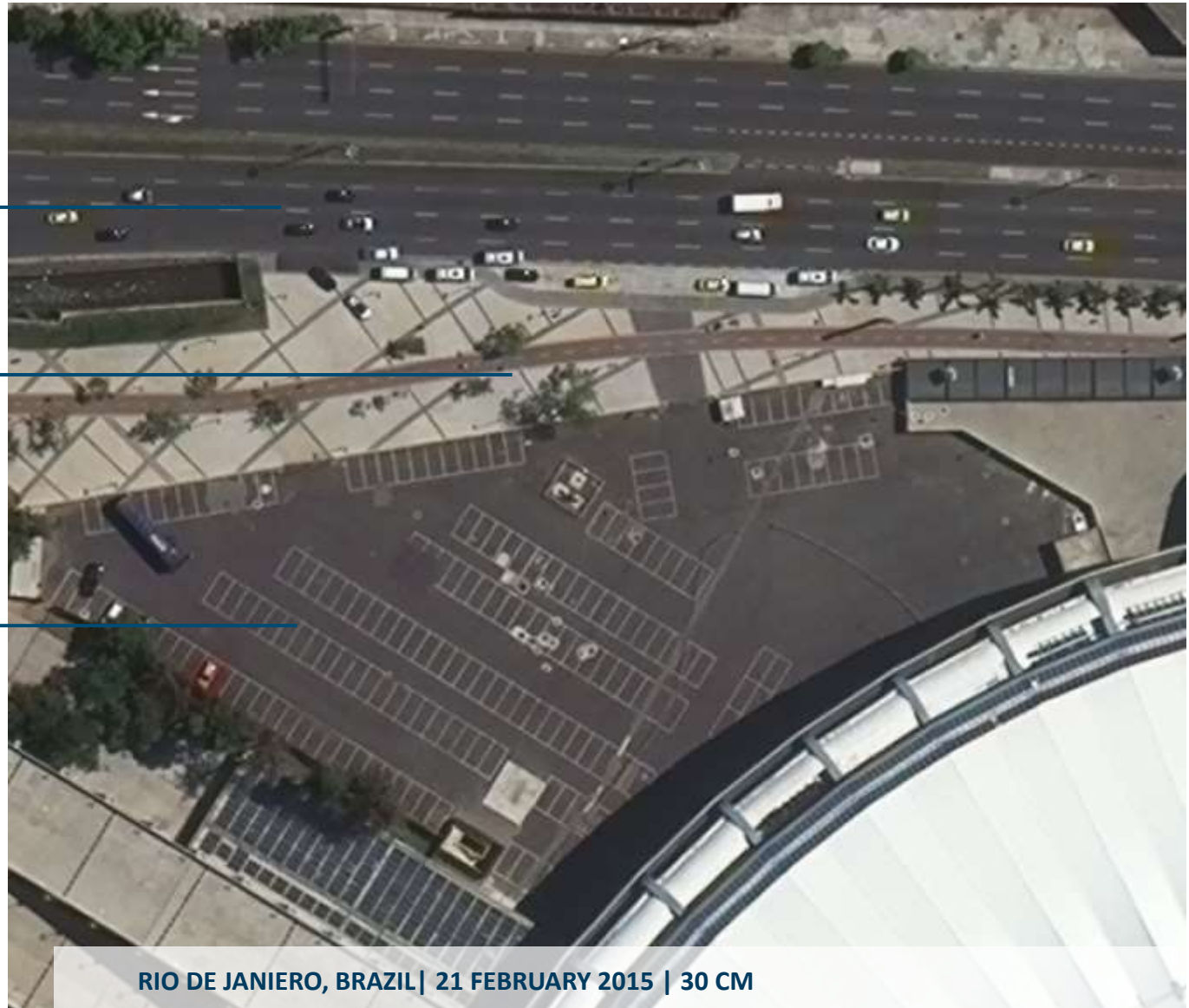
Map Analytics



Traffic flows, volume
and direction

Identify pedestrian
and bike traffic

Determine number
of parking spaces,
full or empty



RIO DE JANEIRO, BRAZIL | 21 FEBRUARY 2015 | 30 CM

Energy Development

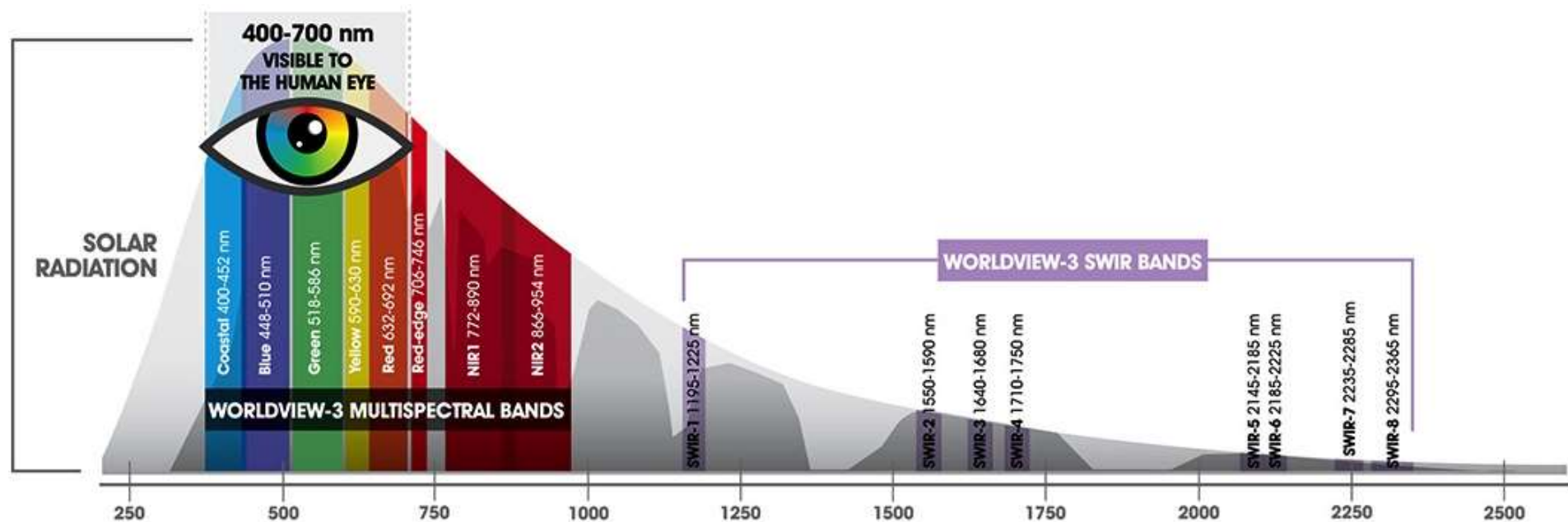


Individual panels
visible for calculation
of energy output and
system monitoring



SOLAR FACILITY | QUEBEC, CANADA | 8 MAY 2015 | 30 CM

Spectral Diversity



Roof types using WV-3 SWIR



Multispectral Images – Fort McMurray



Multispectral Images – Fort McMurray



Multispectral Images – Fort McMurray







High Resolution

Accuracy

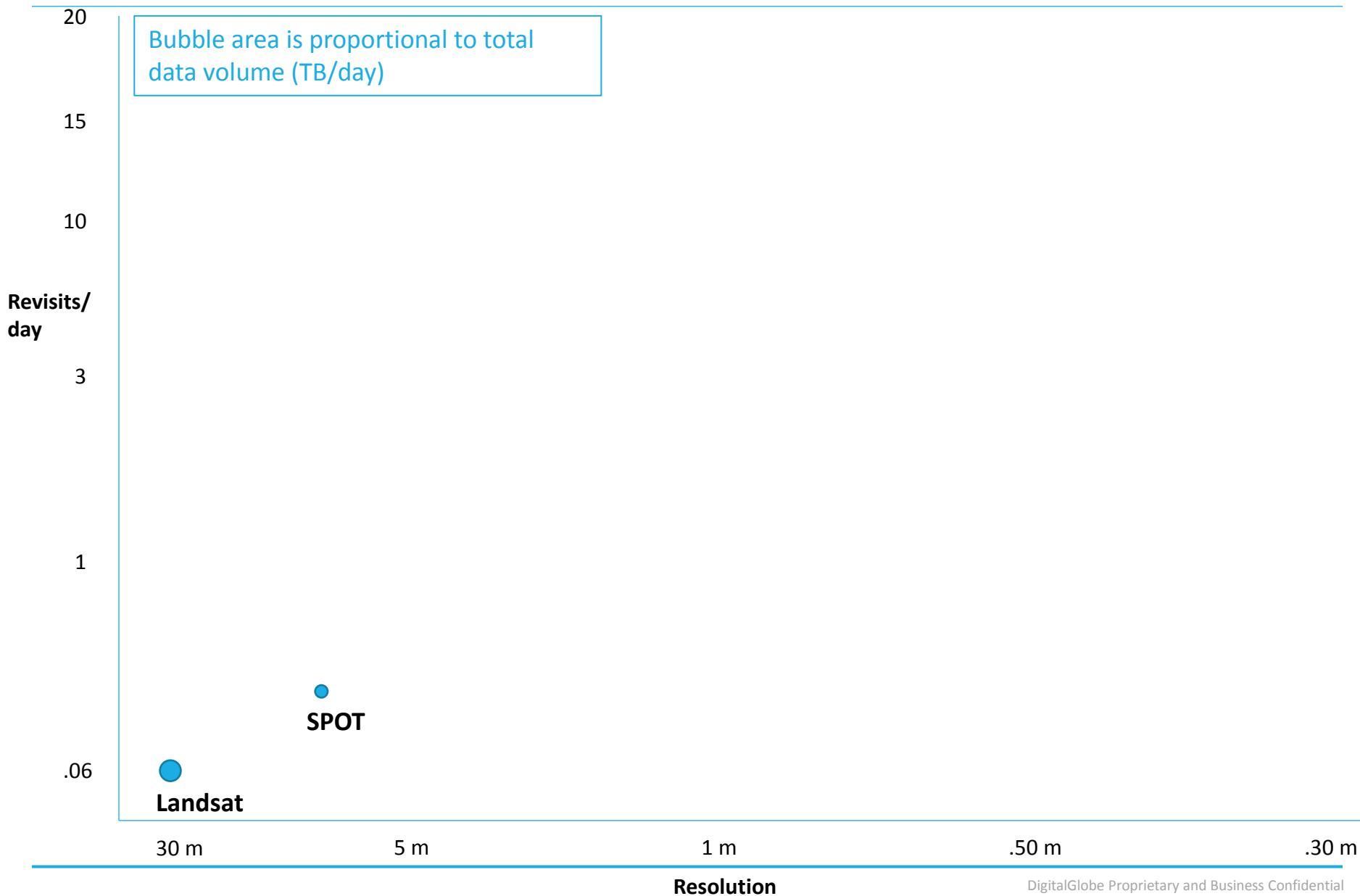
New ways to see the World

Agility

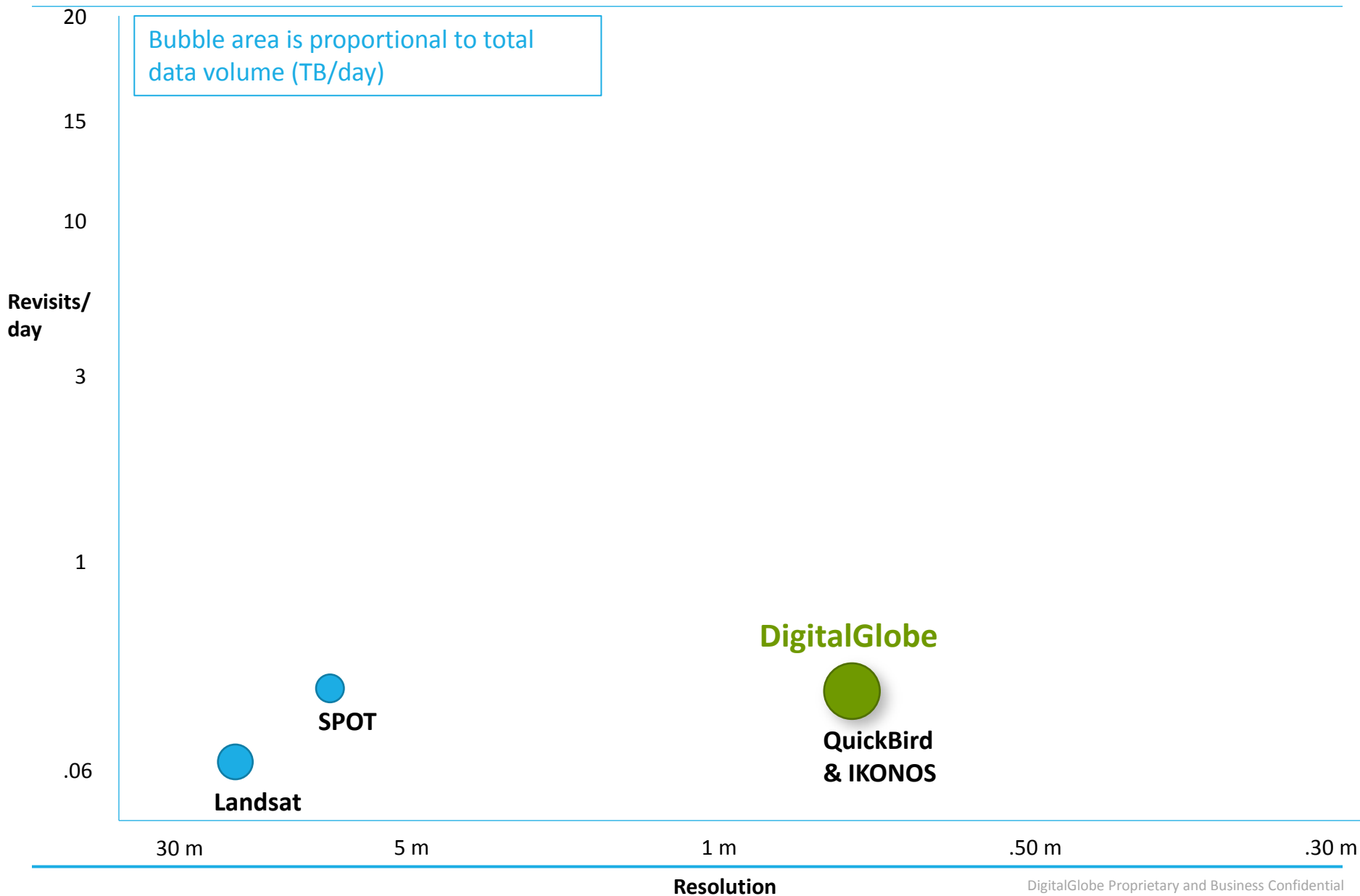
**Collection: equivalent size of
France – daily!**



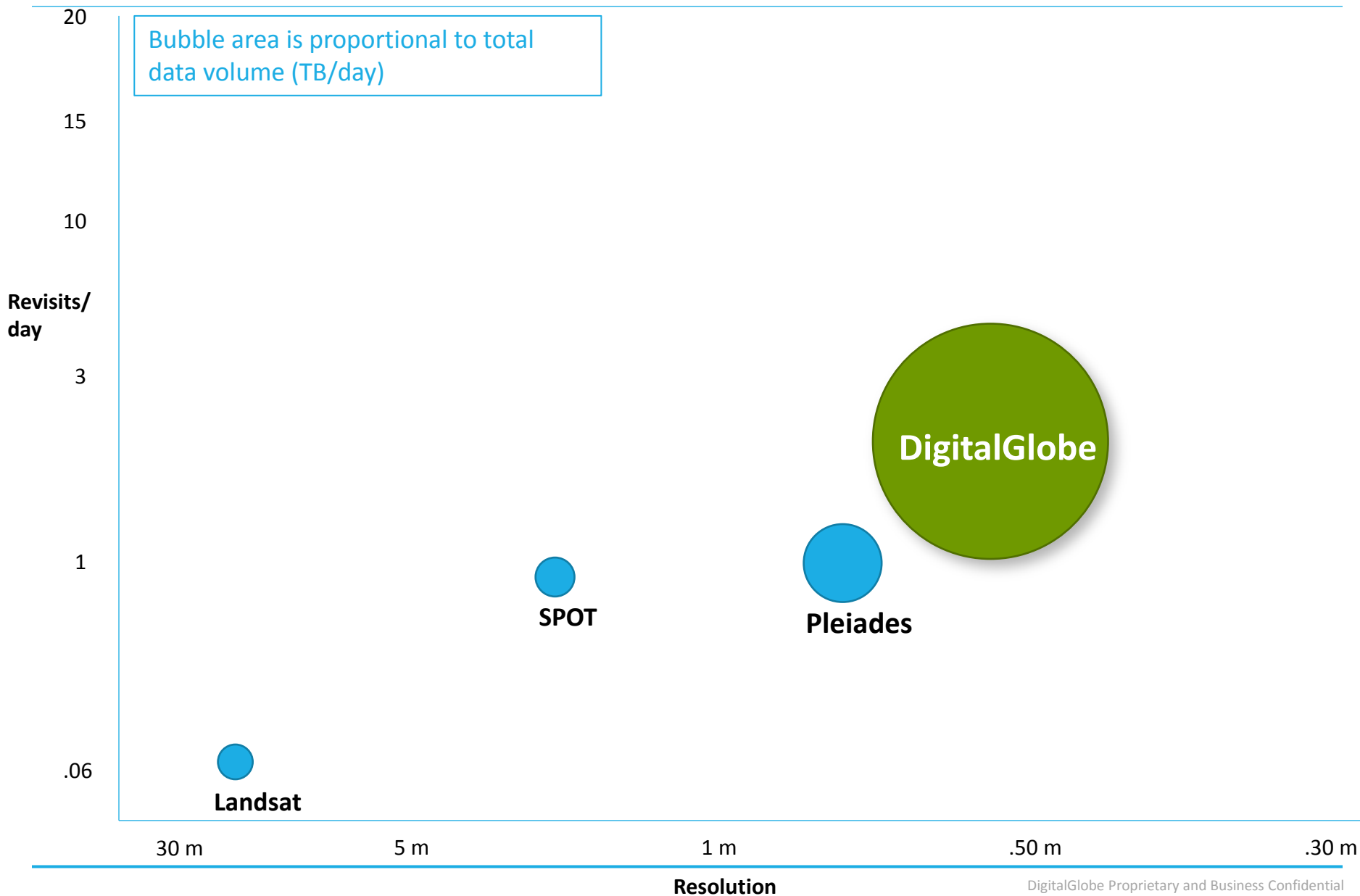
The remote sensing industry is evolving: 1986



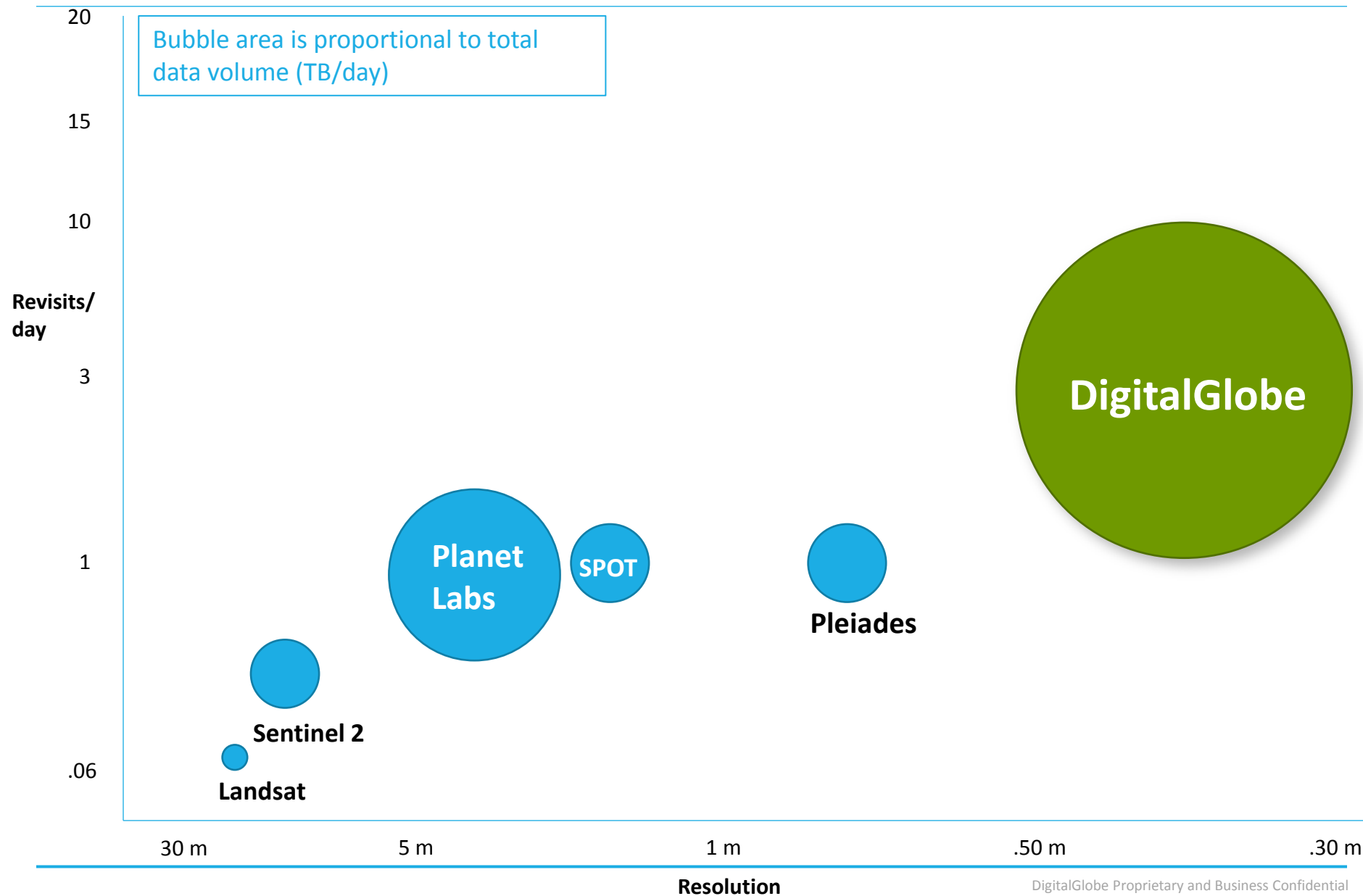
The remote sensing industry is evolving: 2001



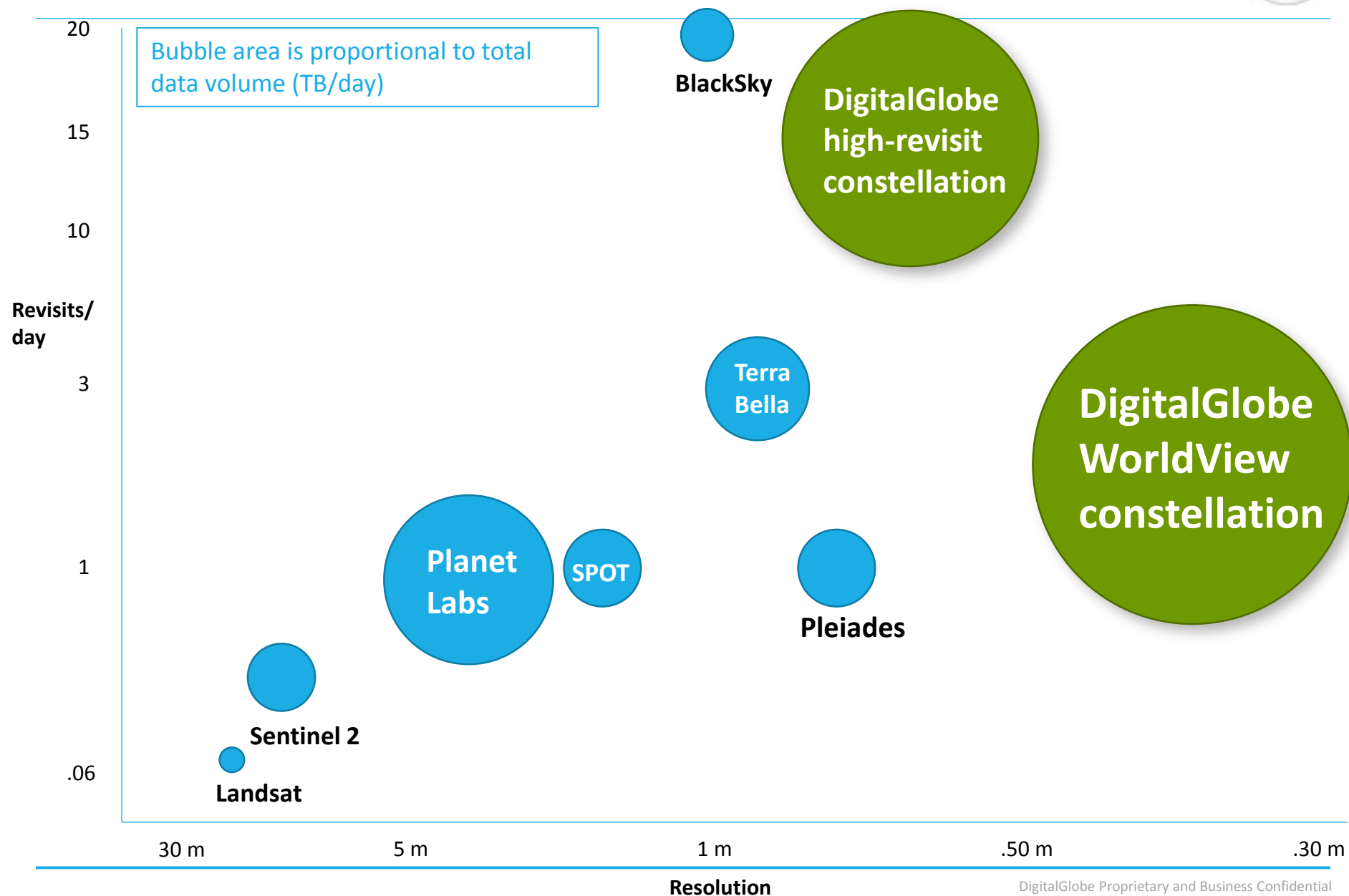
The remote sensing industry is evolving: 2012



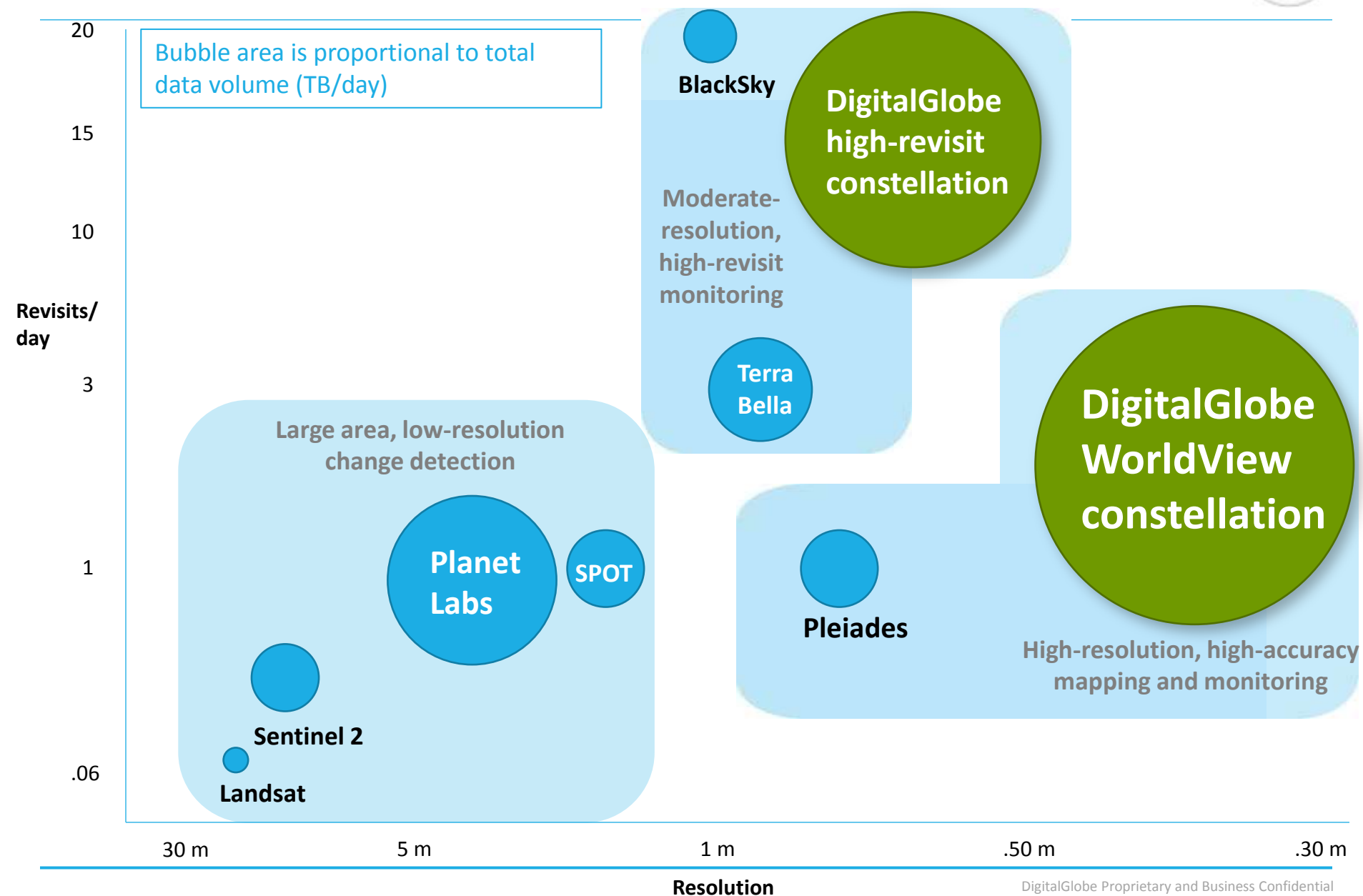
The remote sensing industry is evolving: 2017



The remote sensing industry is evolving: 2020



The remote sensing industry is evolving: 2020



Different satellite classes are complementary



Tipping and Cueing

Find areas
of interest



Broad area
High resolution

Different satellite classes are complementary



Tipping and Cueing

Find areas
of interest

Monitor to
detect
change



Broad area
High resolution



Rapid revisit
Moderate resolution

Different satellite classes are complementary



Tipping and Cueing

Find areas
of interest



Broad area
High resolution

Monitor to
detect
change



Rapid revisit
Moderate resolution

Determine
if change is
significant



Agile, retaskable
High resolution

Different satellite classes are complementary



