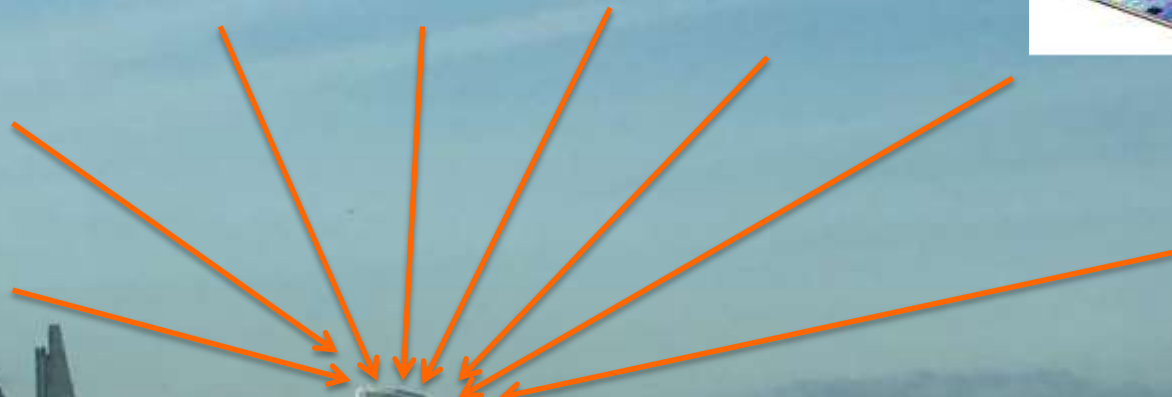


Location Analytics and Business
Intelligence:
Leveraging mainstream IT and Financial
Services Market

Dr Vanessa Lawrence CB
Location International Ltd







Satellite images suggest work on World Cup football stadiums in Qatar has been halted by blockade

Camilla Hodgson 

🕒 Jan. 5, 2018, 2:00 AM 🔥 4,383



FACEBOOK



LINKEDIN



TWITTER

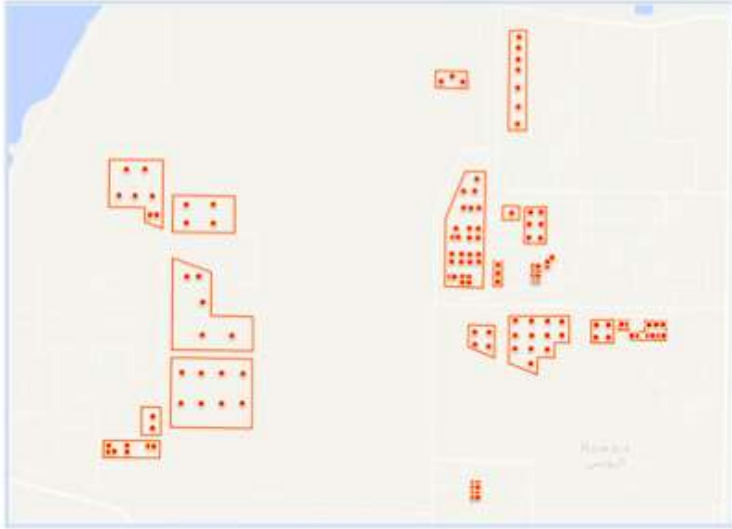


EMAIL



PRINT





Segmentation of floating-roof tanks areas to optimise the retrieval of satellite imagery



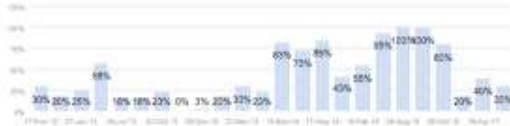
Each new image acquired over the areas are processed to measure the fill percentage (97% accuracy)

Access to 10+ commercial earth observation satellites offers regular measurements

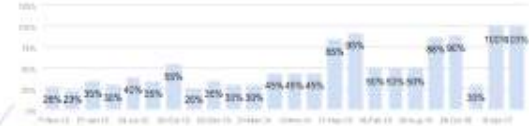


Copyright © 2017 Birdi Ltd. All rights reserved.

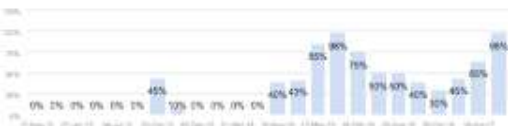
Fill percentage per tank



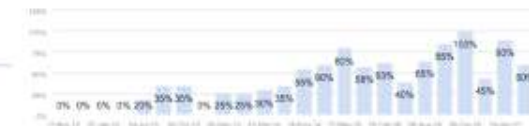
Tank #02



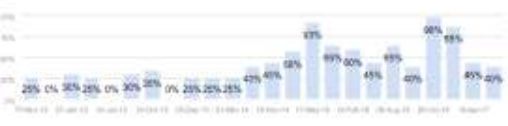
Tank #03



Tank #01



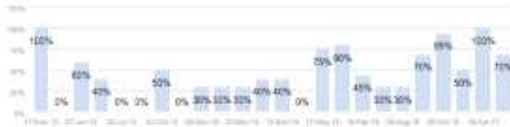
Tank #04



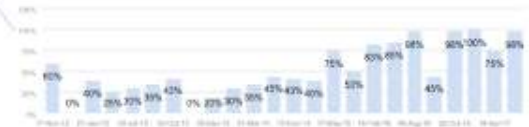
Tank #05



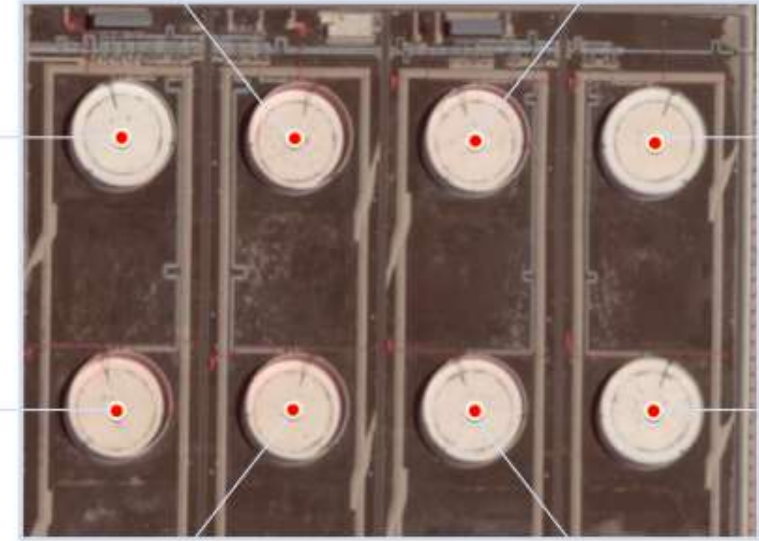
Tank #08



Tank #06



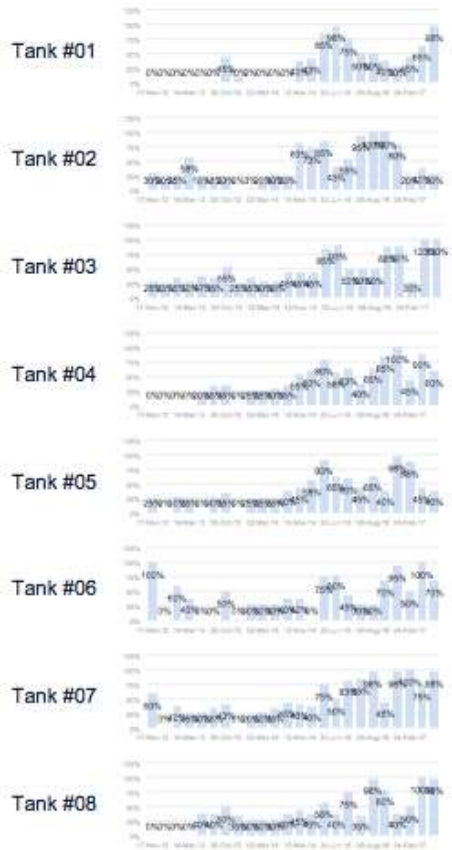
Tank #07



Individual floating-roof tank fill percentage over 5 years

Copyright © 2017 Birdi Ltd. All rights reserved.

Overall Fill percentage



Crude oil fill percentage evolution over a group of 8 tanks during a 5 year period

Copyright © 2017 Birdi Ltd. All rights reserved.

Planes, Ships, Cars, Oil Storage

The screenshot displays the BLUEGLASS web application interface. The top navigation bar includes the BLUEGLASS logo, navigation links for Main Dashboard, Africa, U.S., Hurricanes, and Add Dashboard, and system status indicators for All Systems Operational and user information (john.gouglason@geopark.io).

The main interface is divided into two primary sections:

- Map:** A satellite view of an airfield with several white airplane icons overlaid. A search bar and map controls are visible at the top left of this section.
- Data Lenses:** A panel on the right side containing several data visualization and control elements:
 - Plane Detection:** Shows a count of 13 Total Planes. Includes toggle switches for Map and List.
 - Planet:** Shows 0 Total Images, 0 Avg Images Per Day, and 0 Max Images Per Day. Includes toggle switches for Map and List.
 - Alerts:** A section with tabs for DATA VIEW, ALERTS, ALERT BUILDER, and REPORTING. It includes a search bar for Cloud Cover Ceiling (%), an UPDATE PLANET IMAGES button, and a Show 10 dropdown.
 - Table:** A table displaying detected planes with columns for View on Map, ID, Acquired, Cloud Cover (%), and Exploit Image.

View on Map	ID	Acquired	Cloud Cover (%)	Exploit Image
	00110211_091496_029	Dec 11, 2017 2:54:56 PM	4	EXPLOIT IMAGE
	00110211_091053_028	Dec 11, 2017 2:53:53 PM	0	EXPLOIT IMAGE
 - Footer:** Shows 'Showing 1 to 2 of 2 entries' and a 'News English' section with a Map toggle.

At the bottom left, the URL <https://bg-test.geospark.io/index.html> is visible. At the bottom center, the text 'Leaflet | DigitalGlobe, OpenStreetMap, Mapbox' is present.

A strategy framework for location analytics and business intelligence

