



GWFF

GEOSPATIAL WORLD FORUM

[**CLICK TO KNOW MORE**](#)

An aerial night view of a dense urban landscape, likely Tokyo, with numerous illuminated buildings and streets. The scene is partially obscured by a large white circular graphic on the right side.

PLATEAU

About me

TSUBAKI Yuri

Deputy Director of Urban Policy Division
City Bureau, Ministry of Land, Infrastructure,
Transport and Tourism (**MLIT**), Japan

Director of Project PLATEAU





What is “PLATEAU”?

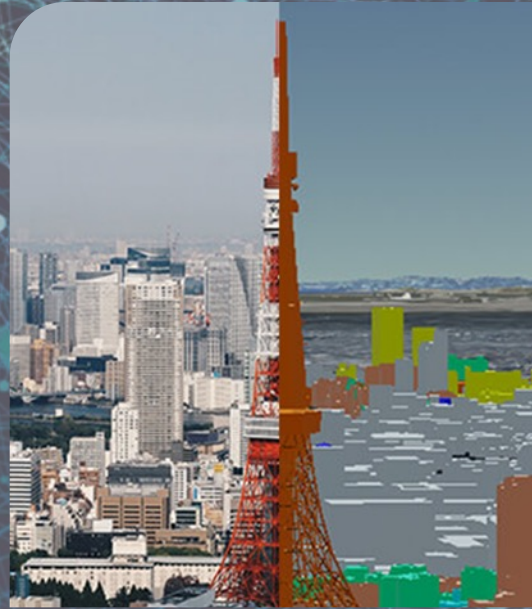
PLATEAU is a project by MLIT
that focuses on developing, utilizing, and
sharing
3D city models,
The Urban Digital Twin Data.

Project Mission

We create a new value in a society
and solve local issues through the digital twin.



The value PLATEAU offer is



High quality



Open data



Data structuring

Establishment of scalable data development scheme

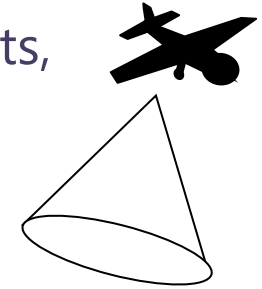
Urban Planning Base Map

2D map data of buildings, roads, blocks, etc.



Aerial survey result

3D data of building heights, shapes, etc.



Geometry(shape)



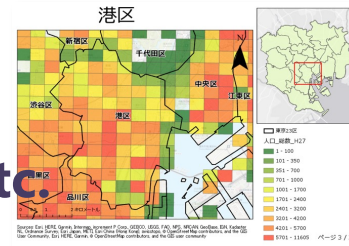
3D City Models

Semantics(attribute)



Urban Planning Basic Survey data, etc.

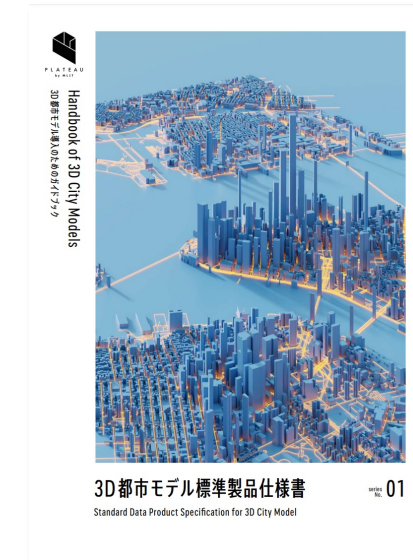
Current status of buildings and land, etc.



Development of Standard Data Product Specification for 3D city models

Standardization of 3D city model data products in Japan

- We developed The Standard Data Product Specification for 3D City Model.
- It has resulted in the unification of the specifications, standards, and quality of 3D city models in Japan.

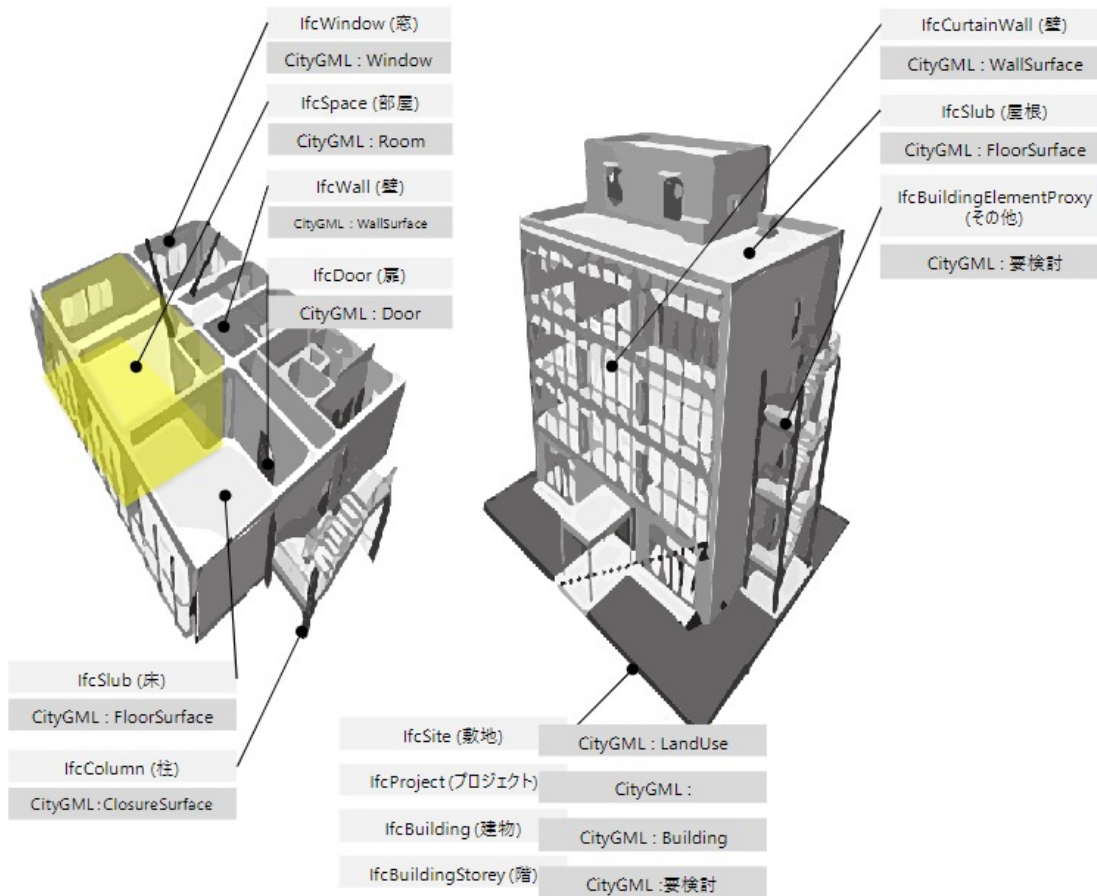


Compatible with international standards

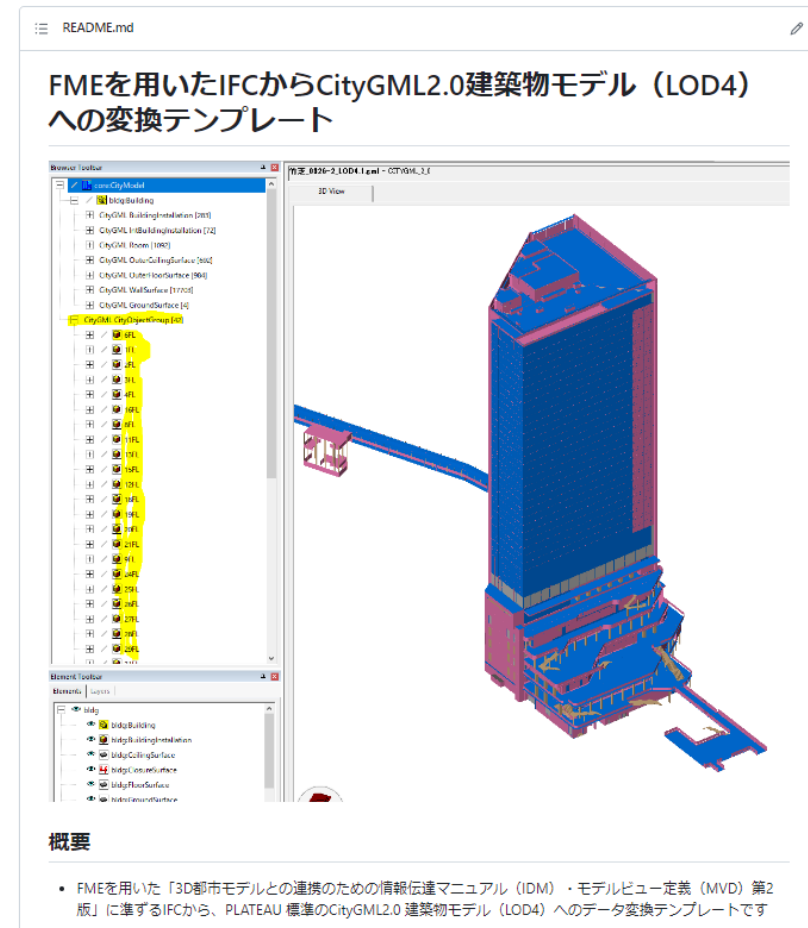


- The PLATEAU standard data specification is based on CityGML 2.0, an open format developed by an international standards organization OGC.
- The PLATEAU standard is a localized standard unique to Japan that adds attribute information and detailed LOD definitions.

PLATEAU-IFC-to-CityGML2.0-LOD4



参考イメージ



<https://github.com/Project-PLATEAU/PLATEAU-IFC-to-CityGML2.0-LOD4>

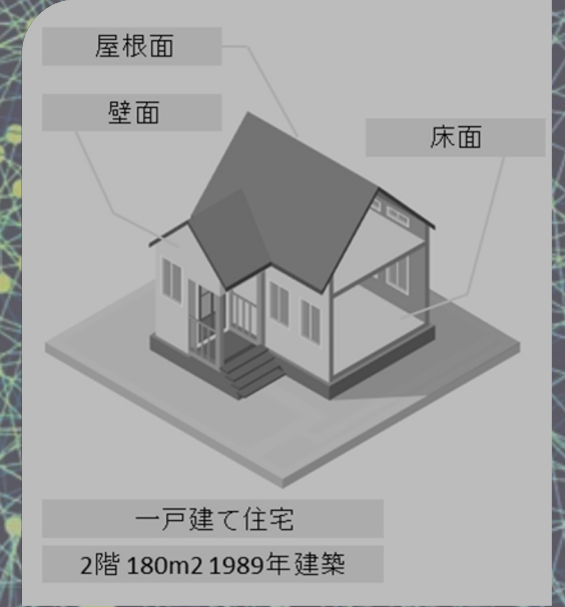
Why PLATEAU is



High quality



Open data

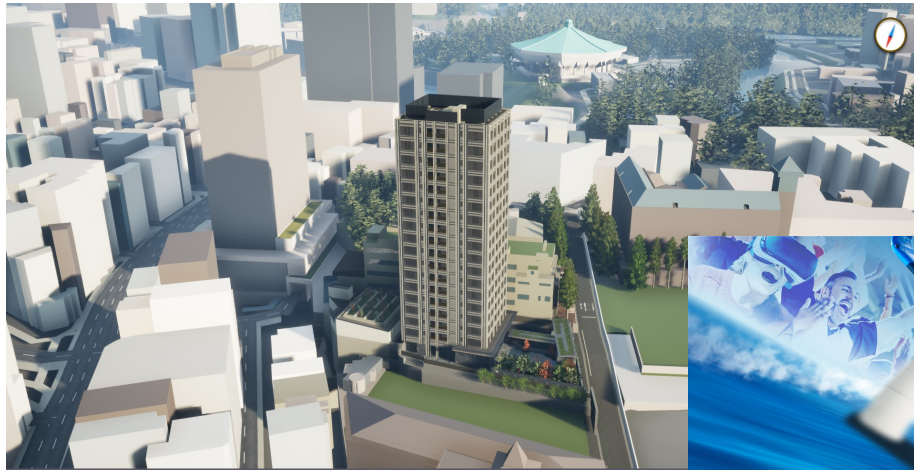


Data structuring

Open Data

Promotion of Open Data

- By adopting open licenses such as CC BY 4.0, we enable secondary use, modification, and commercial utilization.

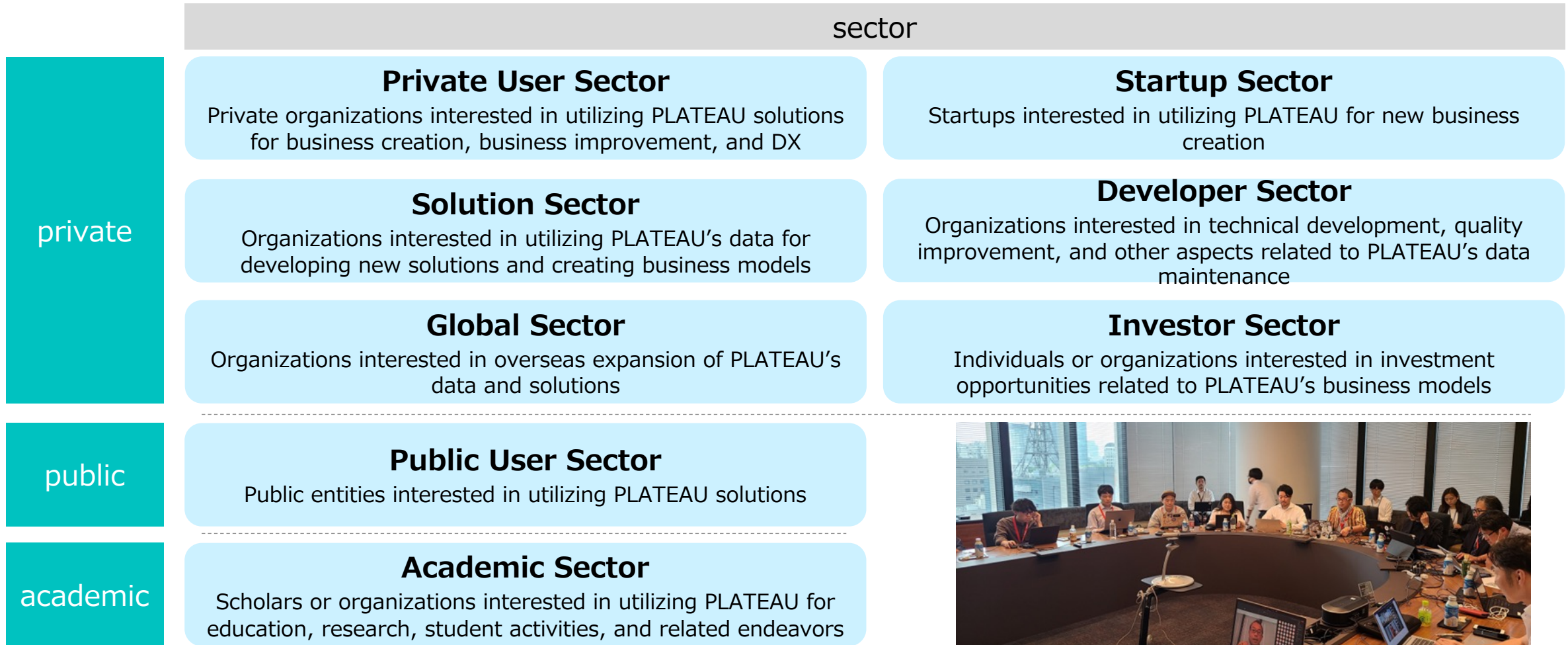


Building Tech Community

- We organize various tech events, workshops, industry-academia collaborations, and other initiatives to promote the growth of the PLATEAU community.
- There has been active presentation of various products utilizing PLATEAU's data on tech communities such as X, GitHub, Qiita, and local tech events.



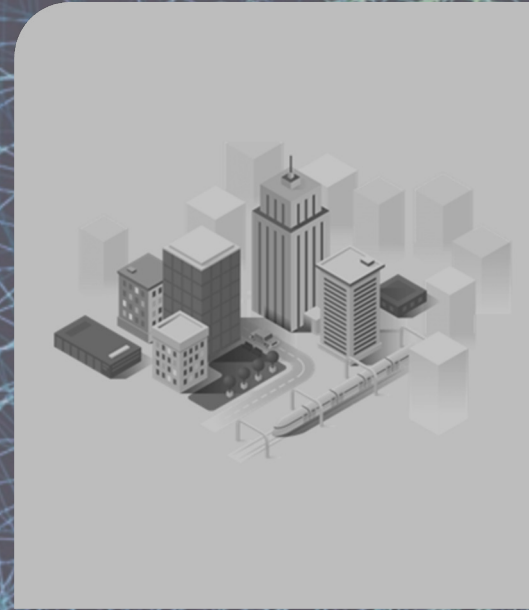
PLATEAU Consortium



What is the unique feature of PLATEAU about



High quality



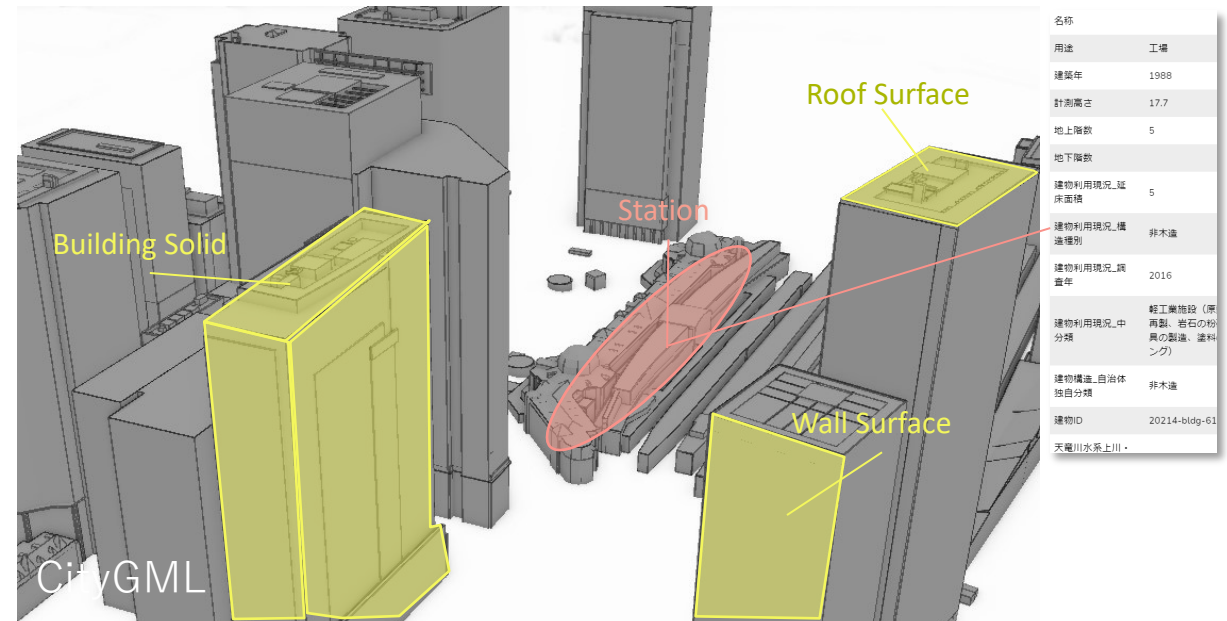
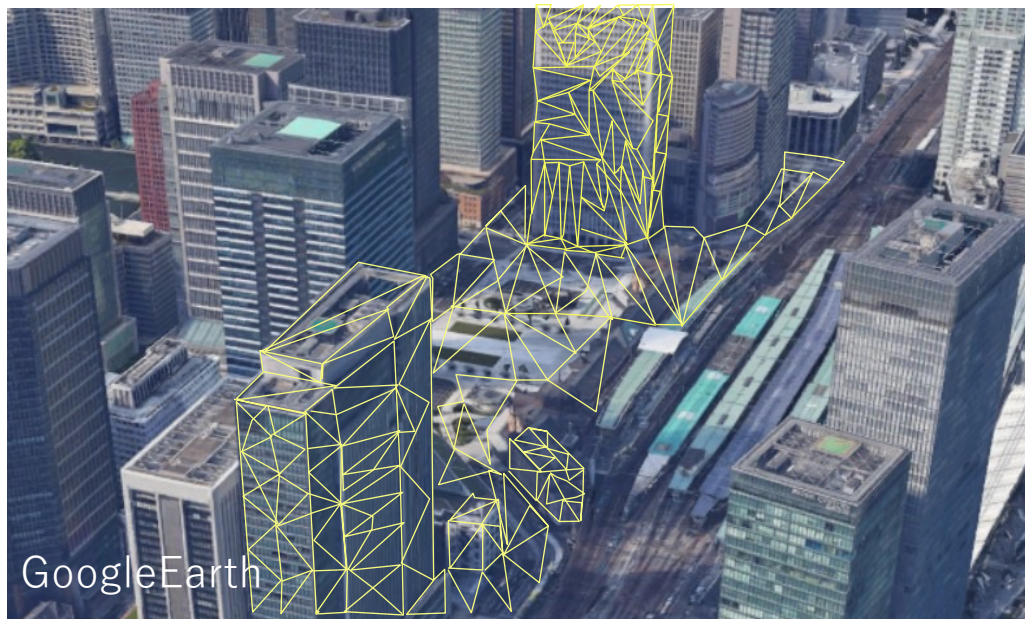
Open data



Data structuring

Difference between semantics and geometry

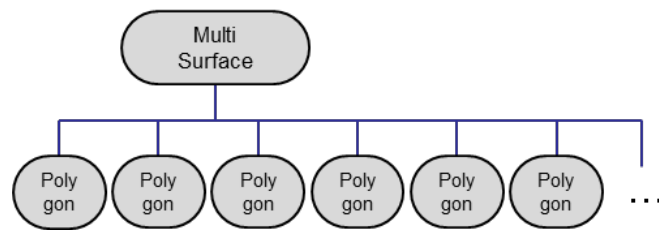
PLATEAU's data is the unique solid model combined with semantics and geometry.



Semantics

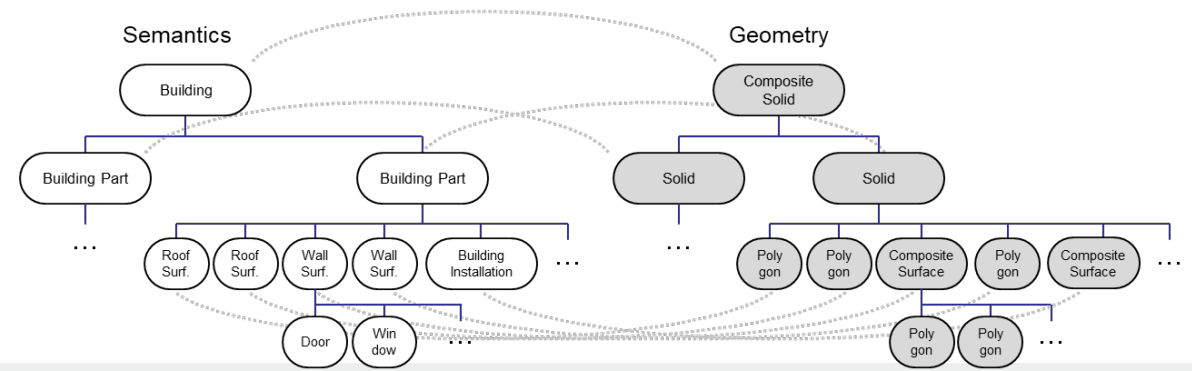


Geometry



Semantics

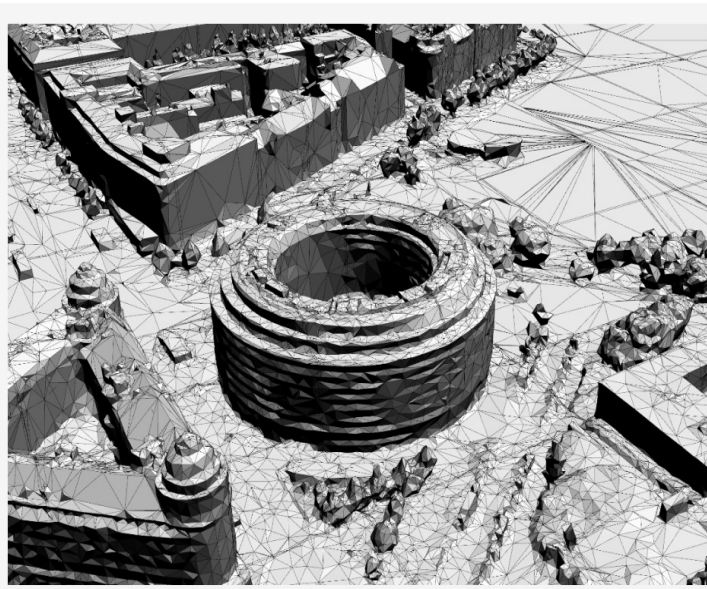
Geometry



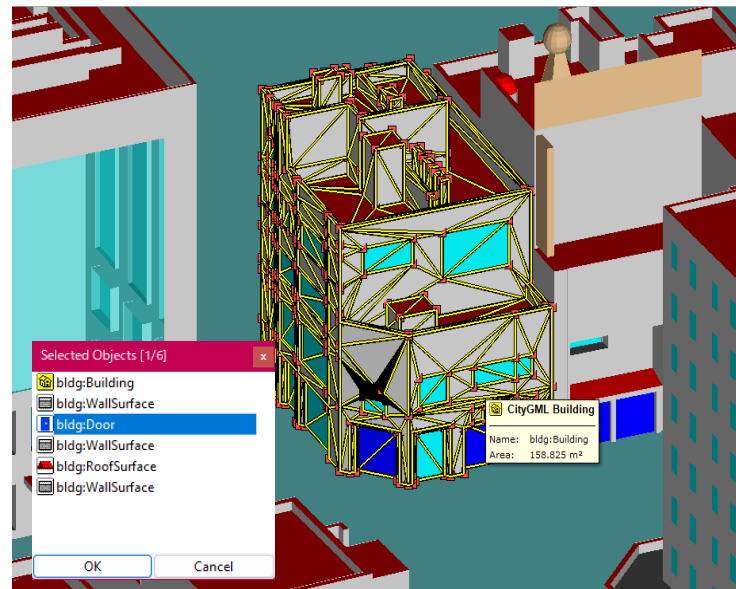
Structured Digital Twin implementation model

In addition to 3D visual, semantic information can be used for analysis at the city scale.

- 3D city models are not simply CG data made up of mesh, but structured data that expresses the 'meaning' of urban space.



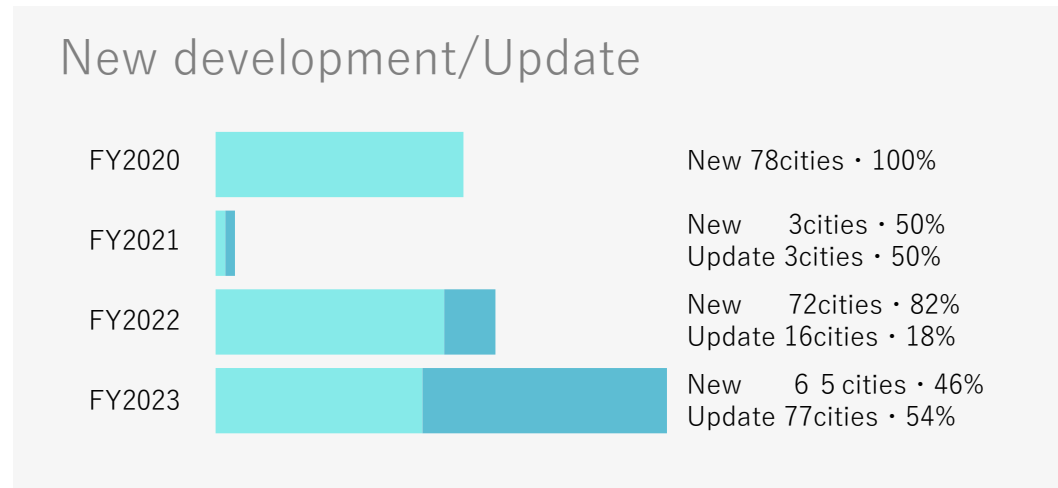
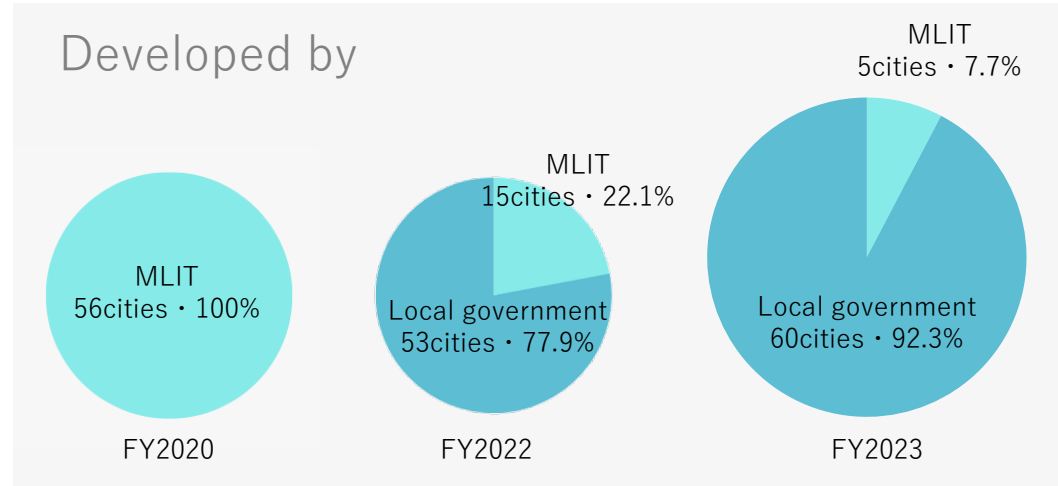
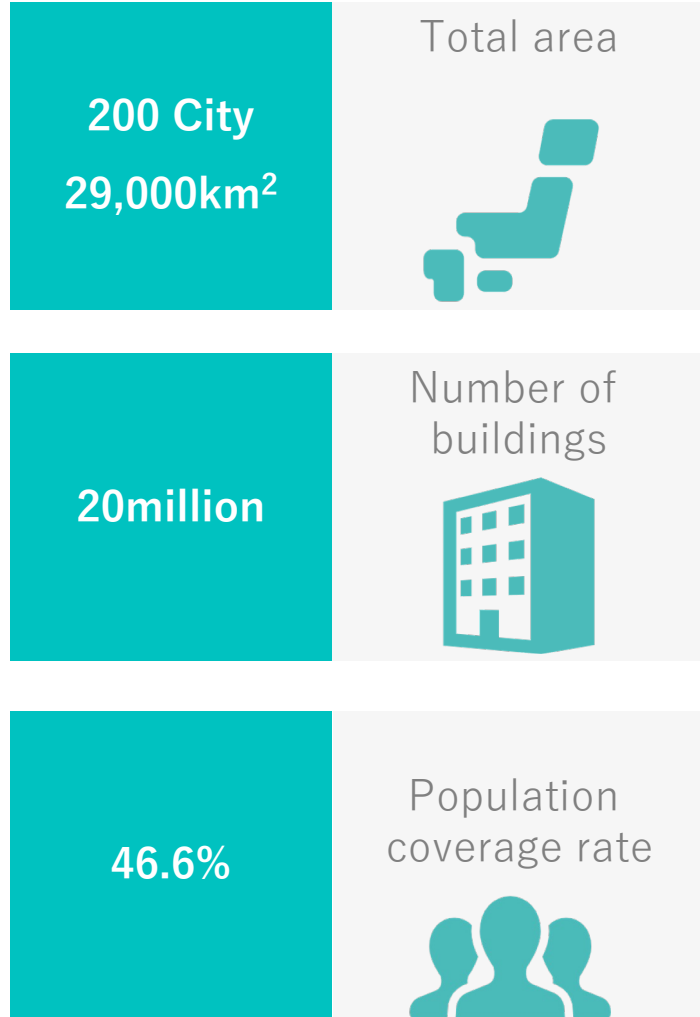
Unstructured mesh data



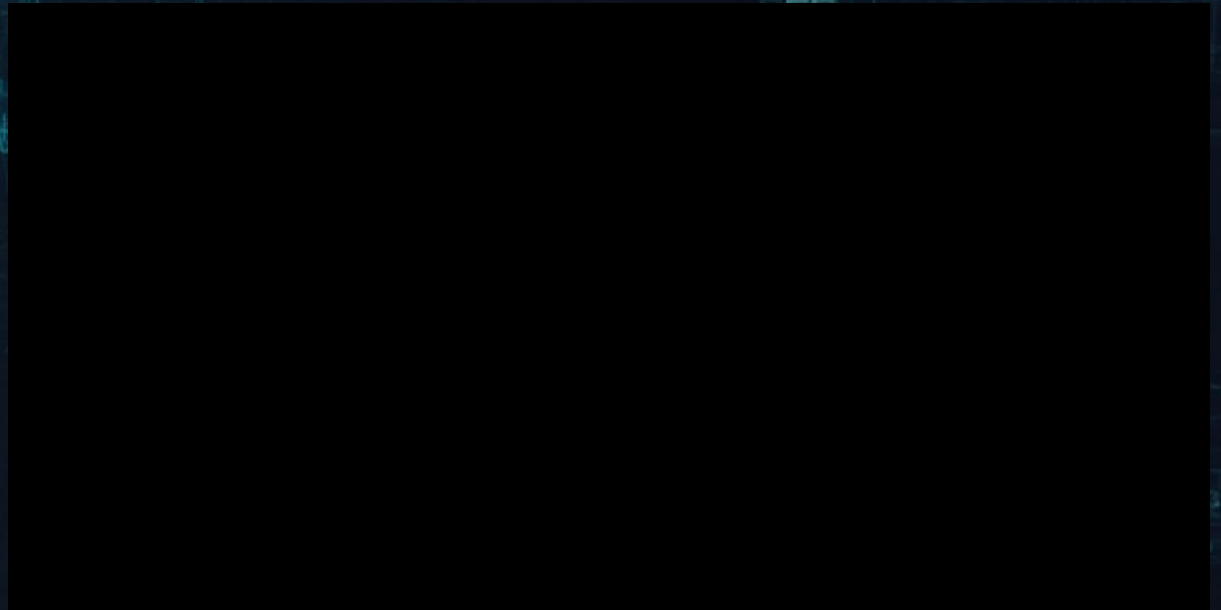
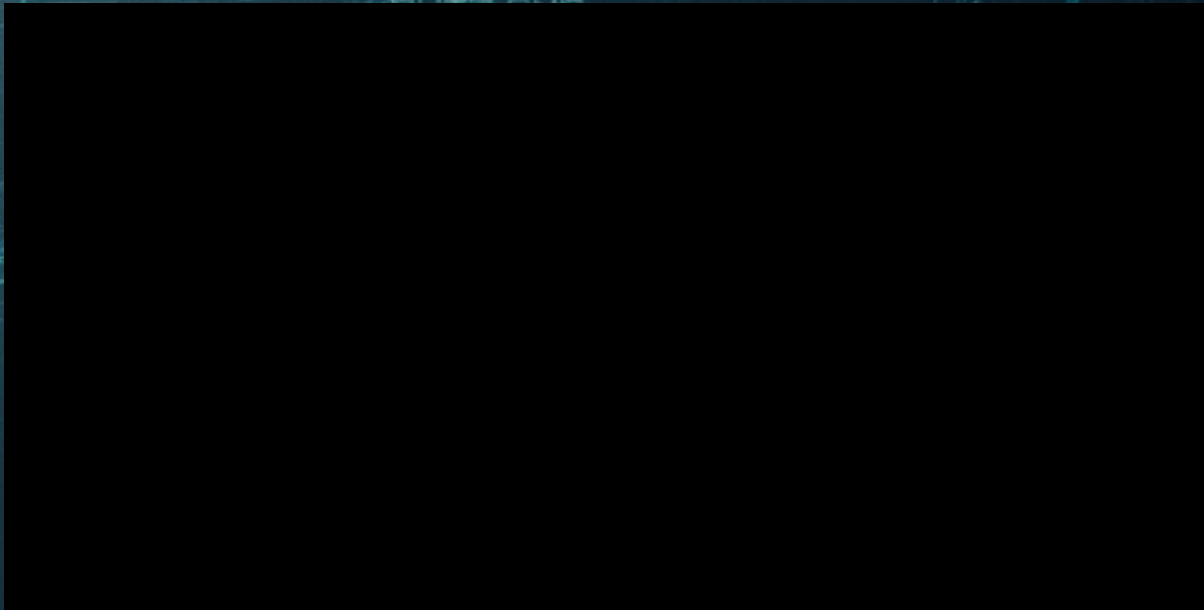
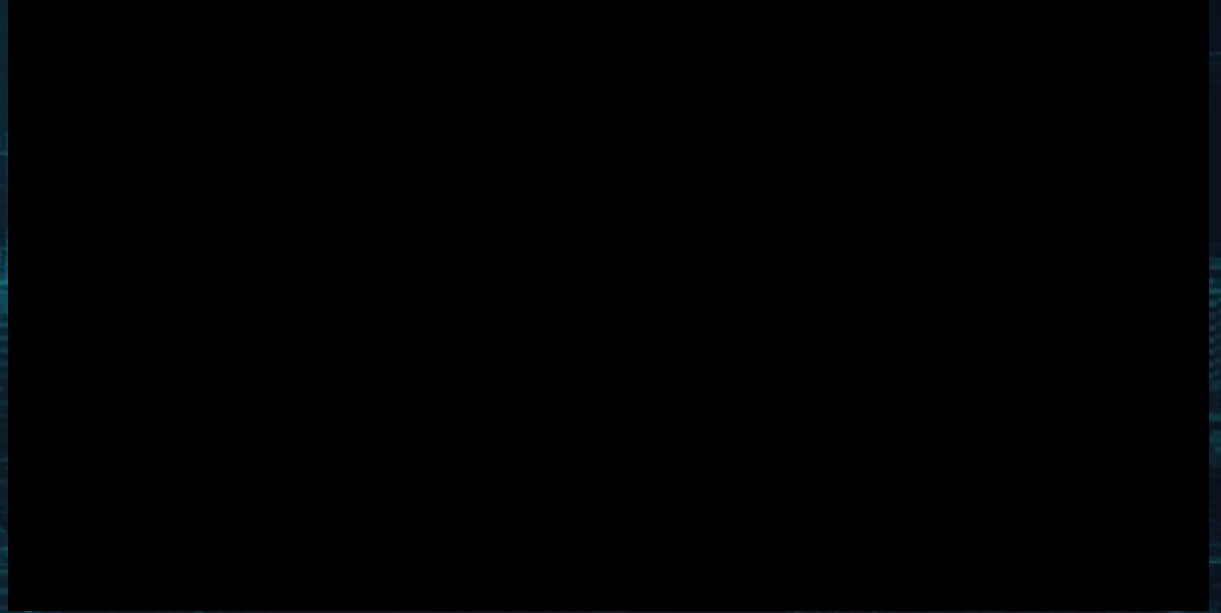
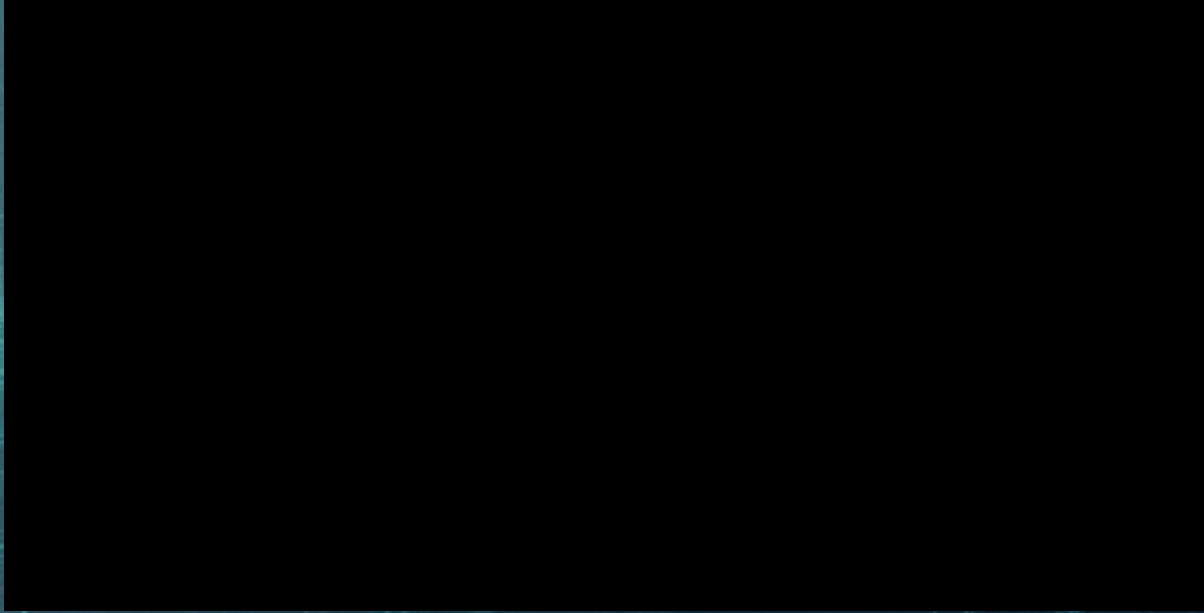
Building LOD3 with doors and windows



Various attribute information

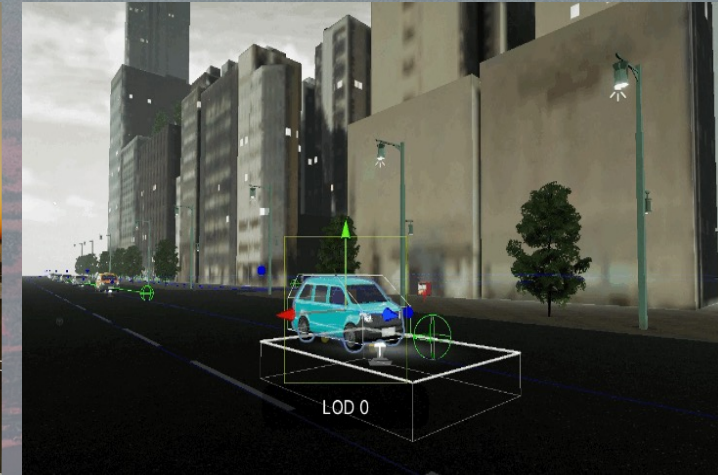


PLATEAU VIEW

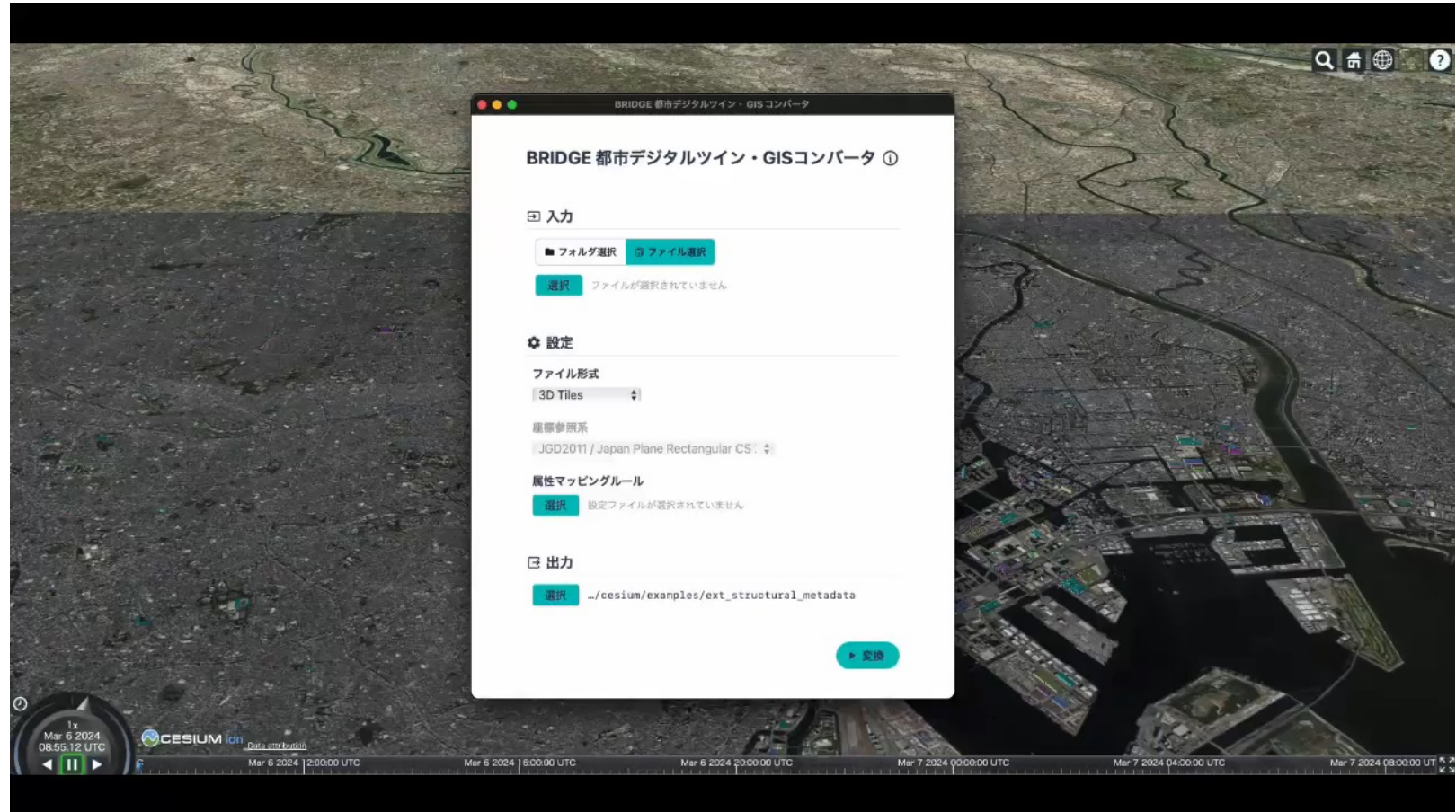


PLATEAU SDK and Toolkit for Unity/Unreal

- PLATEAU SDK for Unity/ Unreal and SDK toolkits for Unity is an open-source software.
- By utilizing the PLATEAU SDK, you can easily import the 3D city model data from PLATEAU into your game engine projects and develop real-world applications and city simulations.
- The PLATEAU SDK toolkits offer the Maps Toolkit, the AR Toolkit, the Rendering Toolkit and the Sandbox Toolkit. It helps you to create application easily.



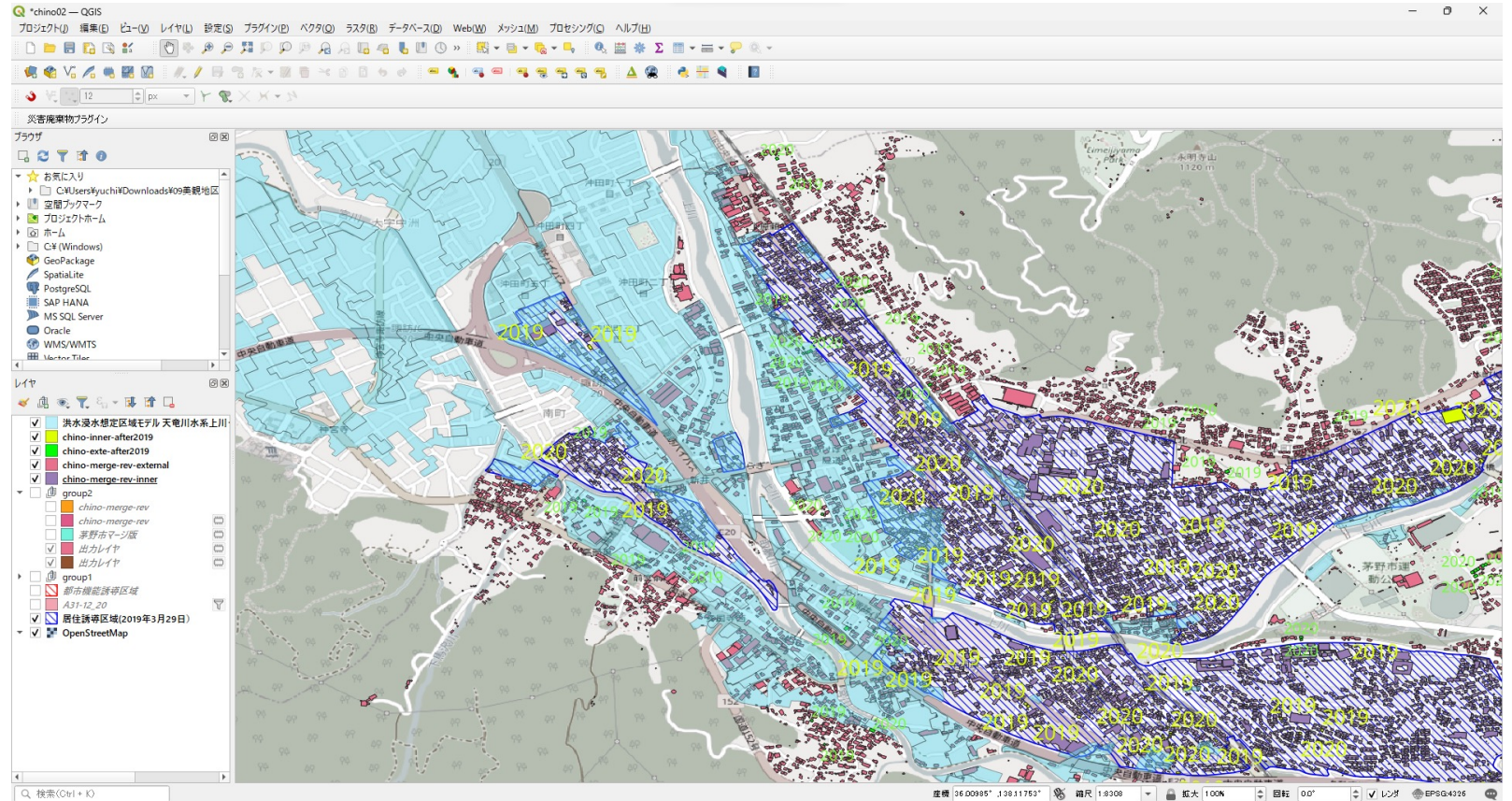
- CityGML serves as an intermediary format for data exchange in PLATEAU's 3D city models.
- PLATEAU GIS Converter is a tool for converting CityGML to GeoJSON, Shapefile, GeoPackage, 3DTiles, KML, CZML, Mapbox Vector Tiles easily.



PLATEAU-QGIS-Plugin

- PLATEAU-QGIS-Plugin is a tool for importing 3D city model data (CityGML) into QGIS easily.
- The tool supports all features, attribute information, and ADE of the 3D urban model provided by PLATEAU, and allows you to handle data in its entirety.

<https://github.com/Project-PLATEAU/plateau-qgis-plugin/>



- Develop the converter from PLATEAU's data to Minecraft's world



FY23 PLATEAU Kids Challenge

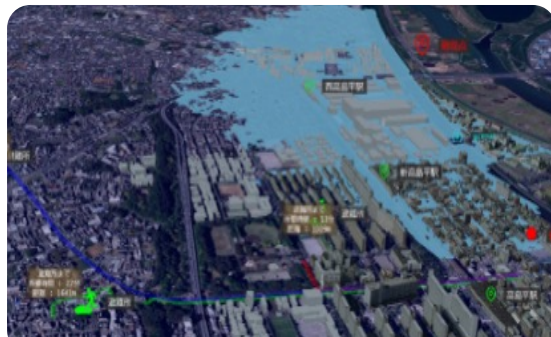


<https://github.com/Project-PLATEAU/plateau2minecraft>

Use Cases



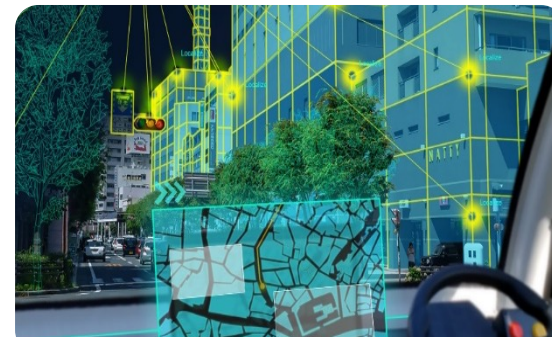
Urban Planning



Disaster Management



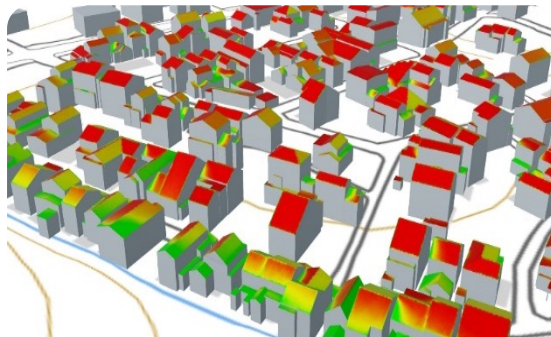
Revitalisation/Tourism



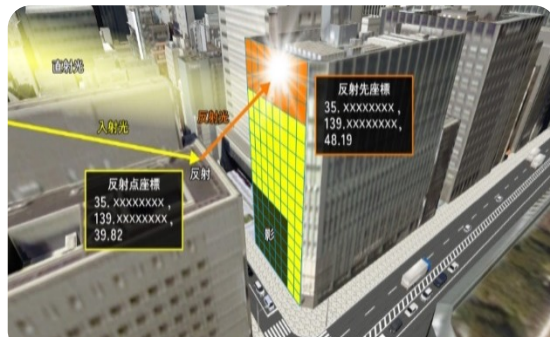
Mobility/Robots



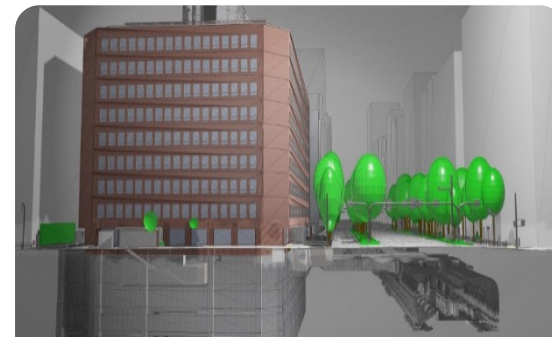
Public participation



Environment/Energy



Infrastructure



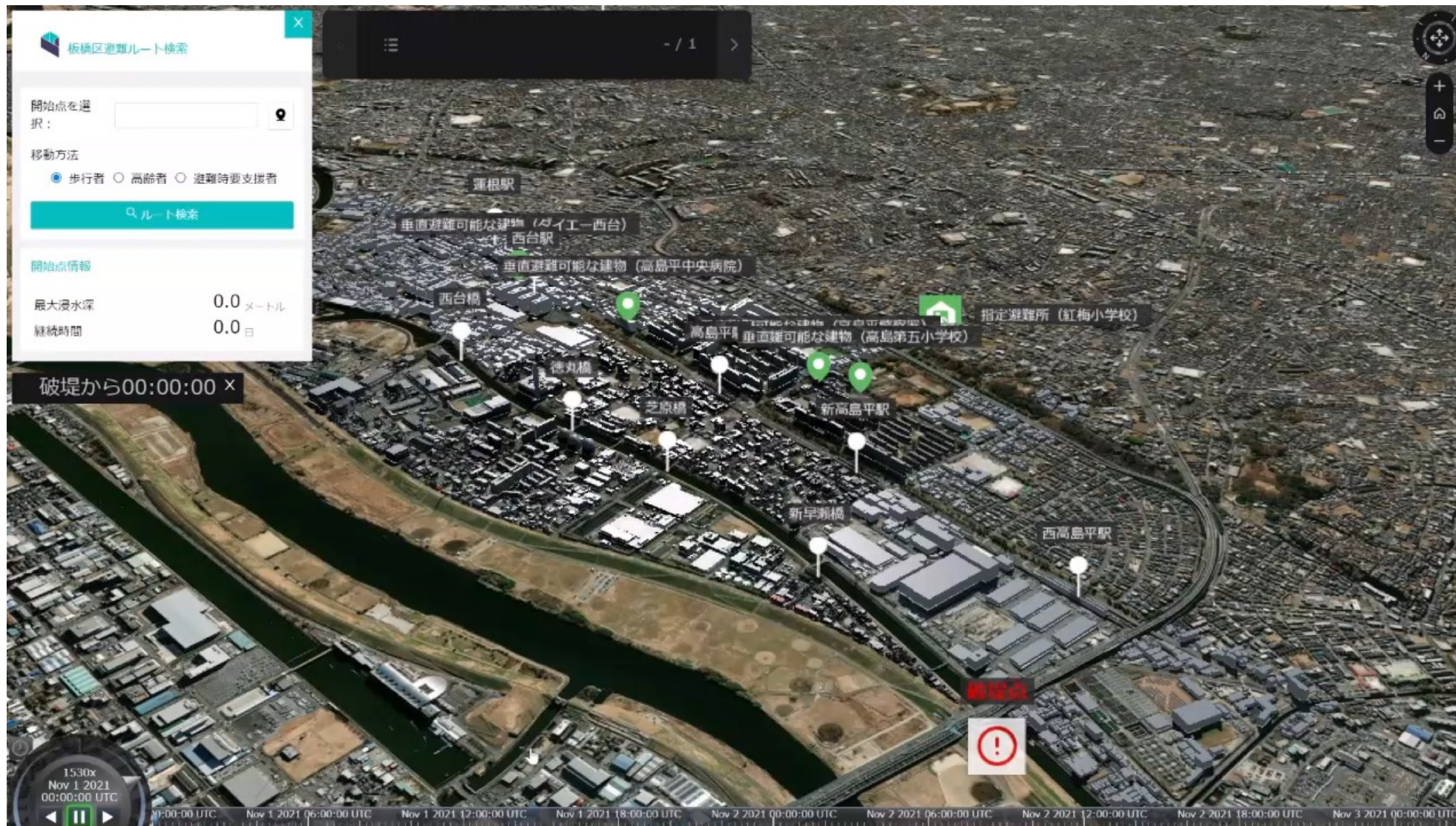
Digital twin tech

Disaster management



Point

- Overlays and AR can help to understand flood changes and evacuation routes.

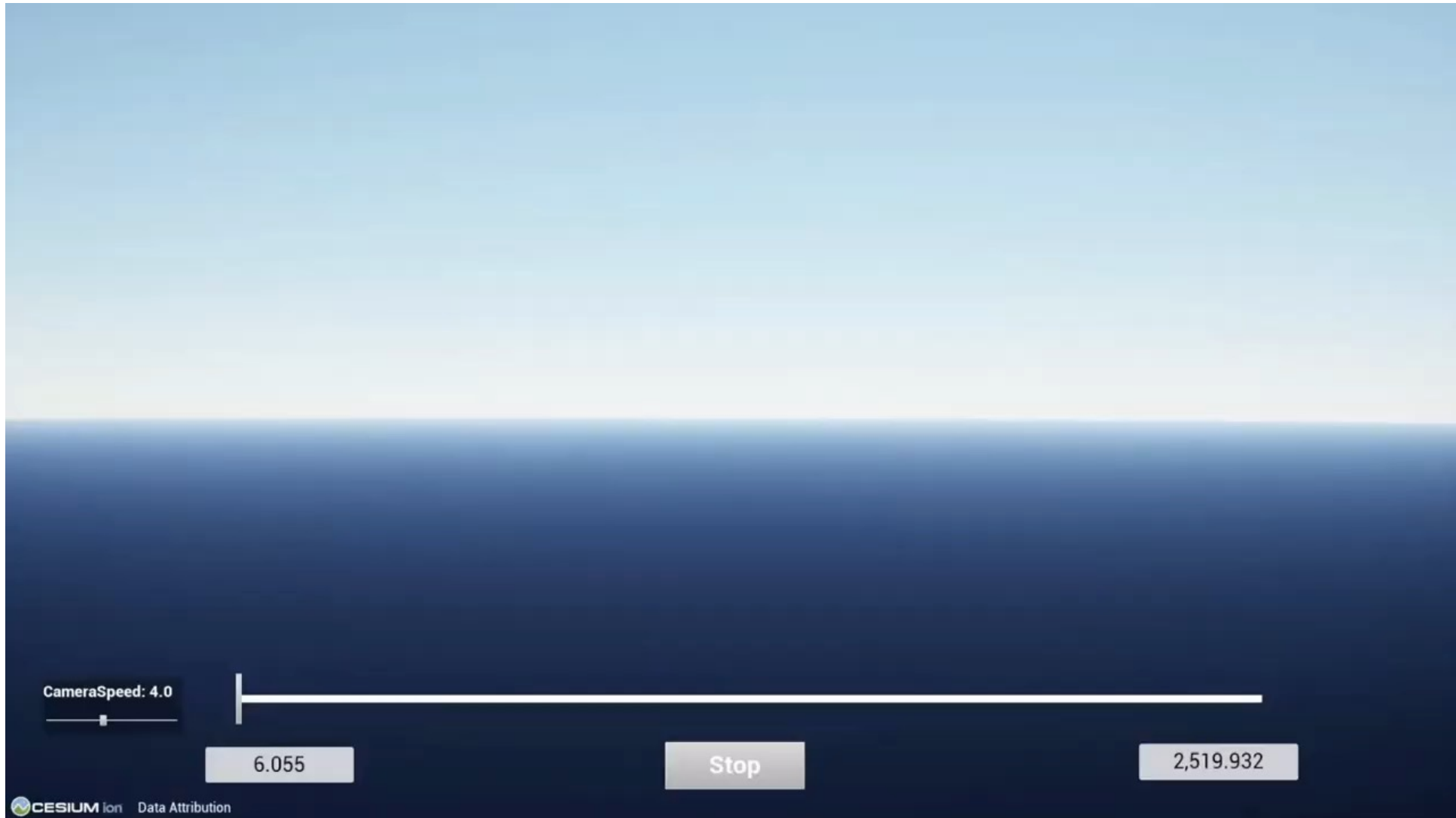


Advanced Disaster Management in Area Design




Point

- Developed large-scale Crowd simulation to achieve DX in area design with a focus on disaster management.



Immersive urban planning with citizens using XR technology

-  **Point**
- Various ideas of participants can be visualized through the XR technology.
 - The tool help citizens to join the urban development easily.



Immersive urban planning with citizens using XR technology



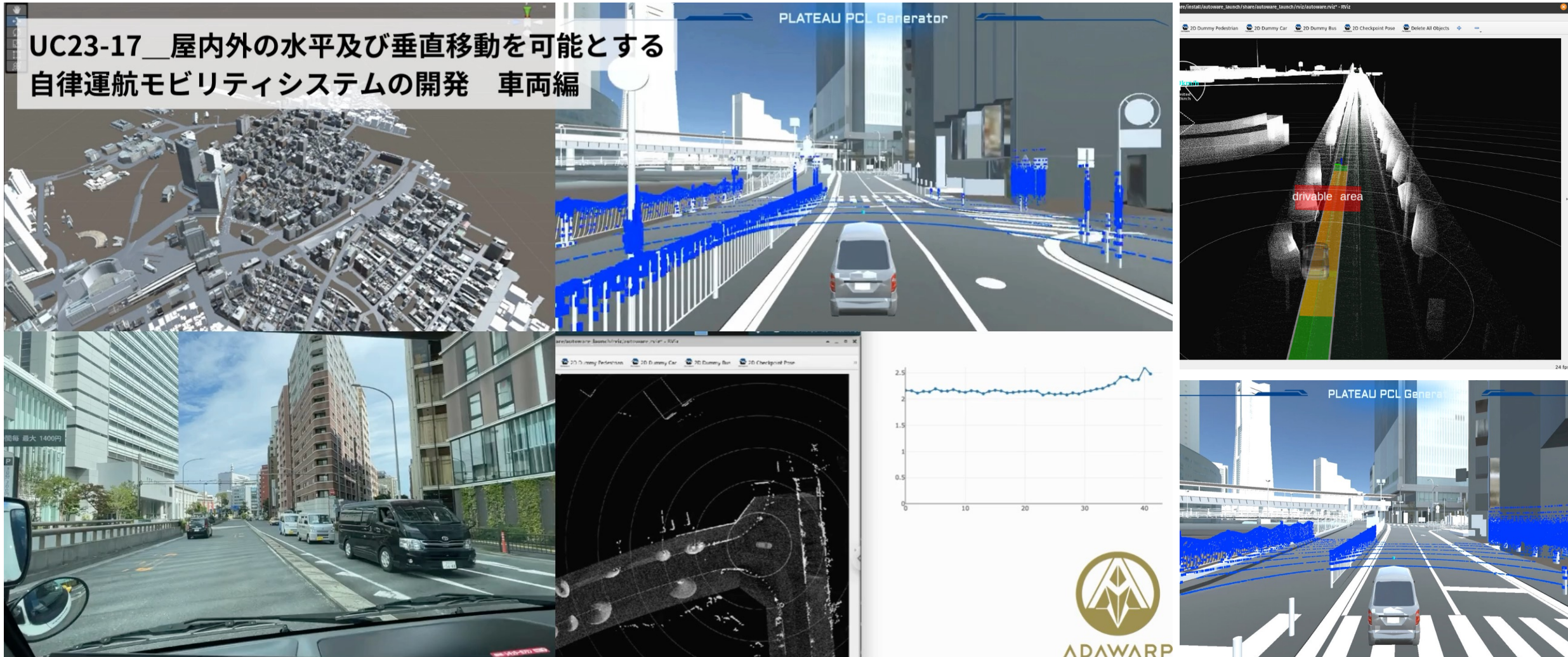
Mobility Autonomous Navigation System Utilizing 3D City Models and BIM



Point

- The system allows the acquisition of LiDAR SLAM point cloud maps within a virtual space using 3D city models.
- By avoiding the costly and inflexible process of environmental map creation, it aims to promote the adoption of autonomous driving.

UC23-17__屋内外の水平及び垂直移動を可能とする
自律運航モビリティシステムの開発 車両編

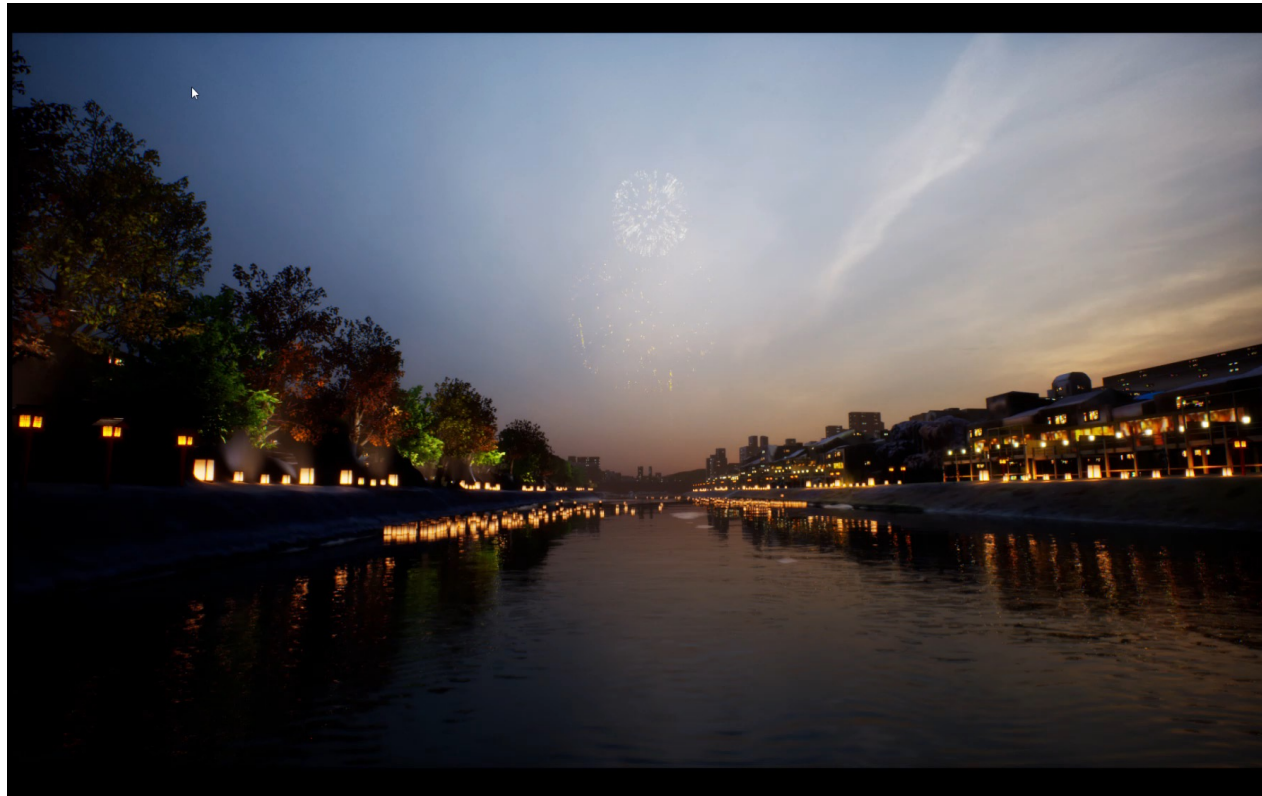


Experience virtual tourism in the metaverse



Point

- The metaverse lets us experience the culture, history, and any other attraction at home.
- Using 3D city model cut a cost of making the metaverse contents.



PLATEAU Project Partners





[City Bureau : Project PLATEAU | The Initiative of Digital Twin in Japan - MLIT Ministry of Land, Infrastructure, Transport and Tourism](#)

