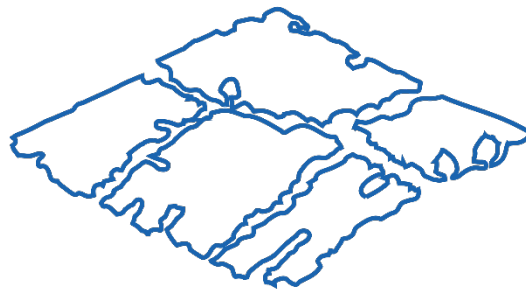




[\*\*CLICK TO KNOW MORE\*\*](#)



**MINISTRY OF JUSTICE  
OF GEORGIA**



NATIONAL AGENCY OF  
**PUBLIC  
REGISTRY**

## **Enhancing National Development through EO and Remote Sensing Data**

**Mari Khardziani**  
**Head of International Relations Service**  
*National Agency of Public Registry*  
*Ministry of Justice of Georgia*

May 15, 2024

# National Agency of Public Registry

## Geospatial Data-Related Responsibilities:



Geodesy and Mapping



Cadastre and Land Registration



Registry of Municipalities



Address Registry



NSDI National Coordinator

## Products and Services:



Basic and Thematic Spatial Data



Topographic Maps



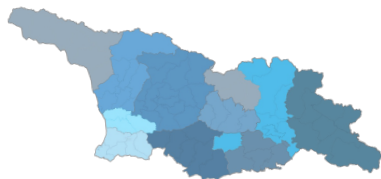
Orthophoto and Satellite Imagery



Addresses

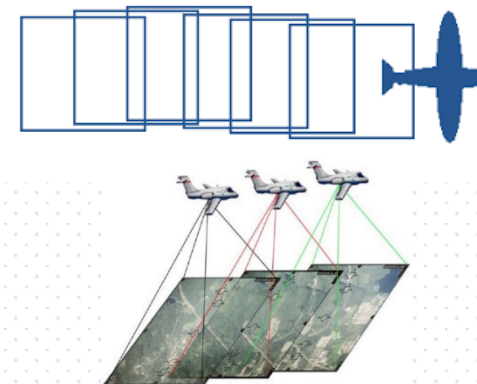
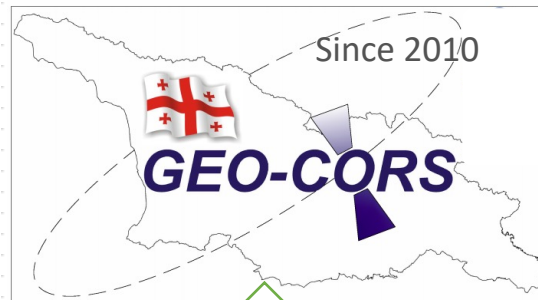
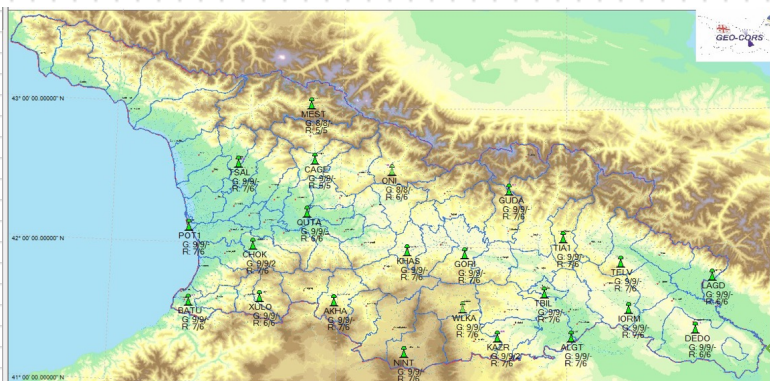
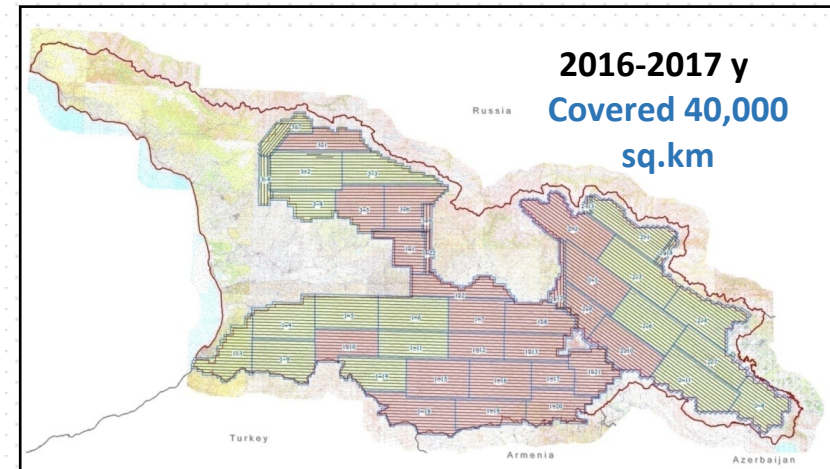
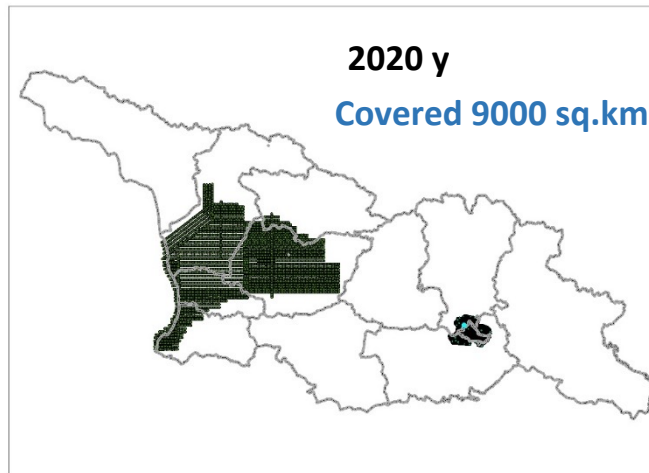
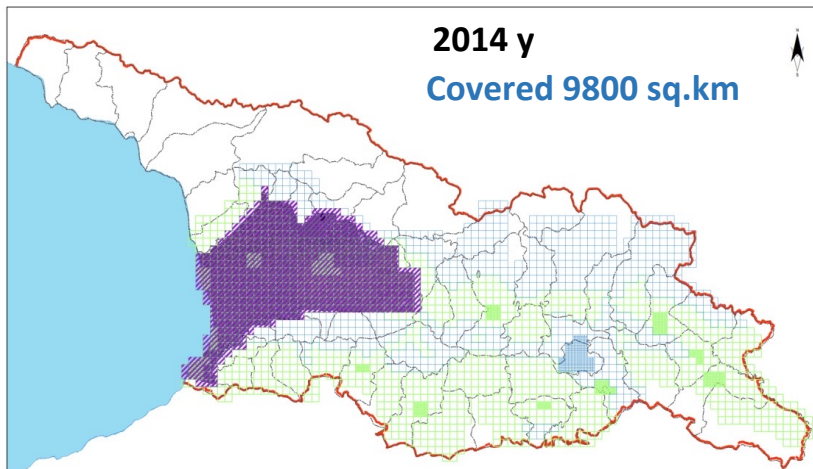


Land Information & Cadastre



NAPR – established in 2004  
Full Member of EuroGeographics, Affiliated Member of FIG

# Aerial Photography



Norwegian Ministry of Foreign Affairs



Kartverket



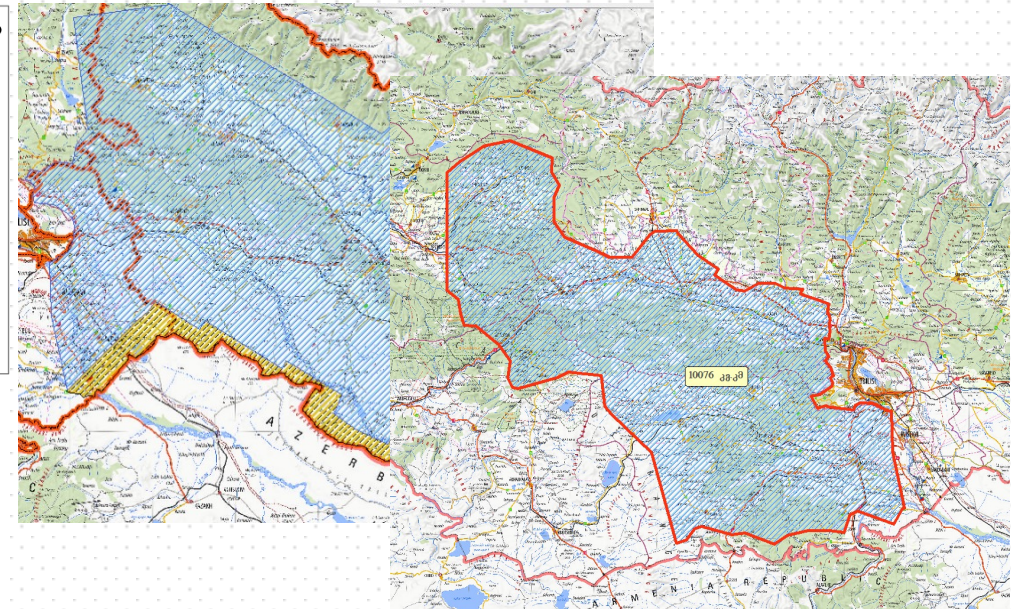
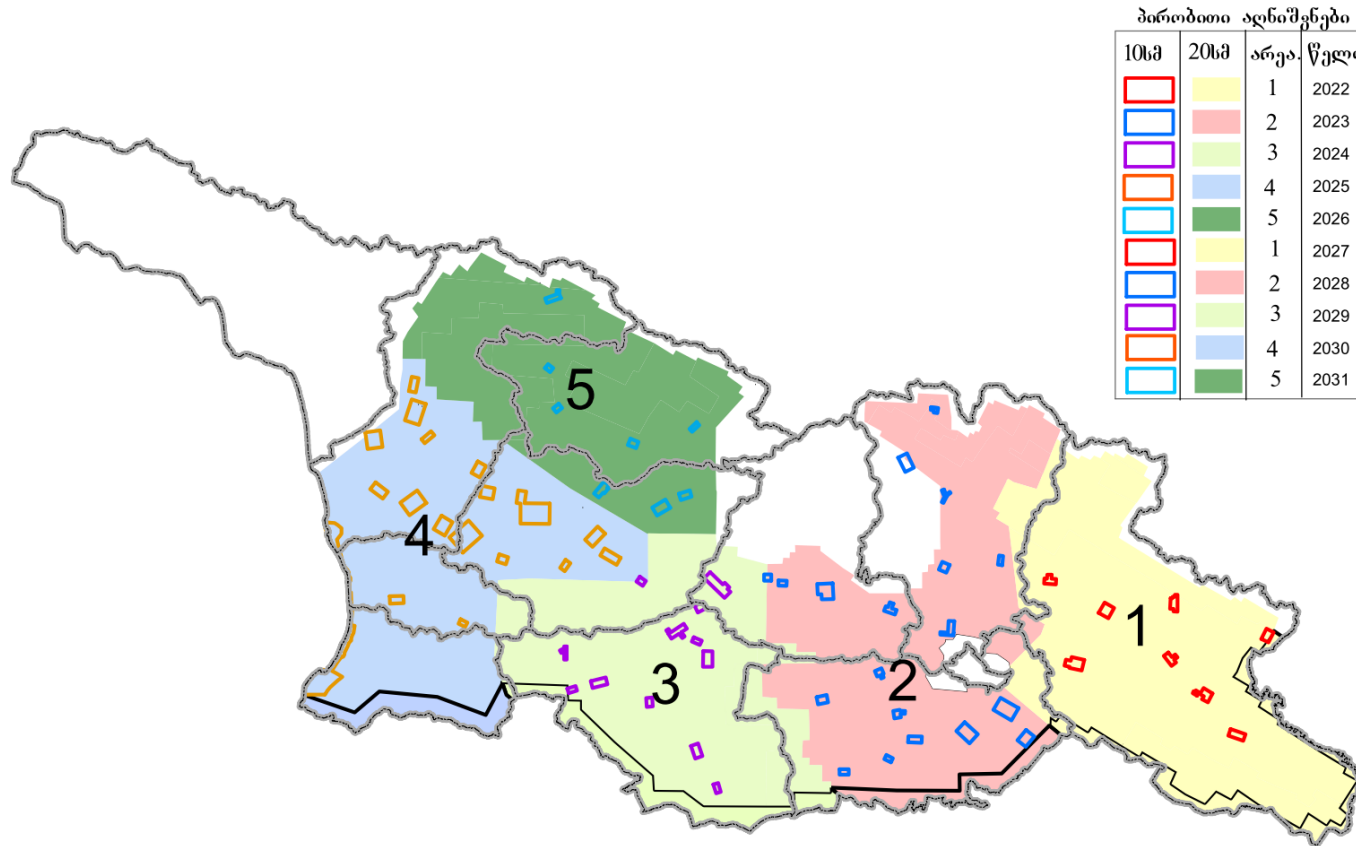
MINISTRY OF JUSTICE  
OF GEORGIA



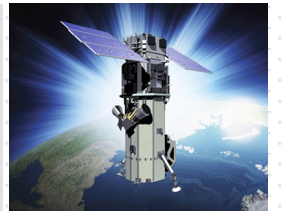
NATIONAL AGENCY OF  
PUBLIC  
REGISTRY

# Aerial Photography Action Plan - 2022-2032

## Updated Aerial Imagery for Georgian National Development



Satellite Imagery for the temporarily occupied territories



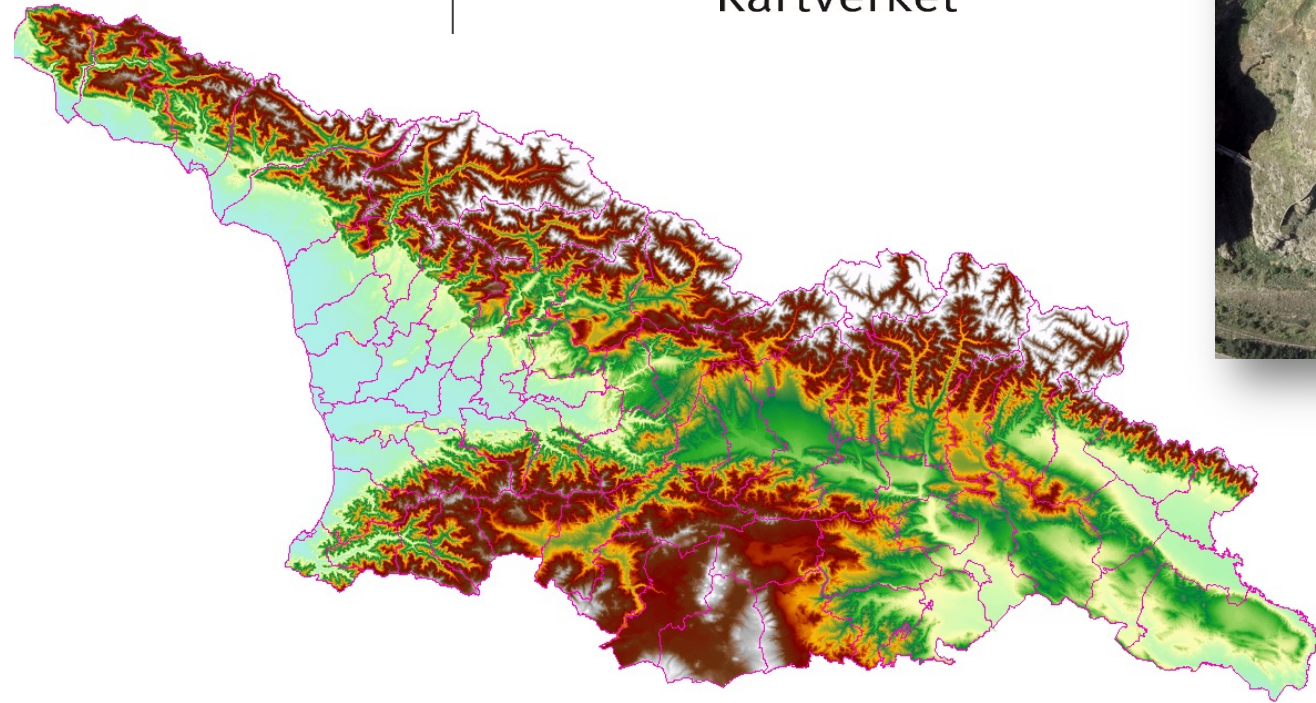
# Digital Terrain Model, Orthoimagery



Norwegian Minist  
of Foreign Affairs



Kartverket



MINISTRY OF JUSTICE  
OF GEORGIA



NATIONAL AGENCY OF  
PUBLIC  
REGISTRY

# Aerial Photography - Tbilisi



Partnership with NAPR

**Tbilisi Municipality:** Funding

**NAPR:** Technical specification, quality control...

500 sq. km.

GSD - 5 cm.

# NAPR Geospatial Data - Digital BaseMaps



## Data Themes:

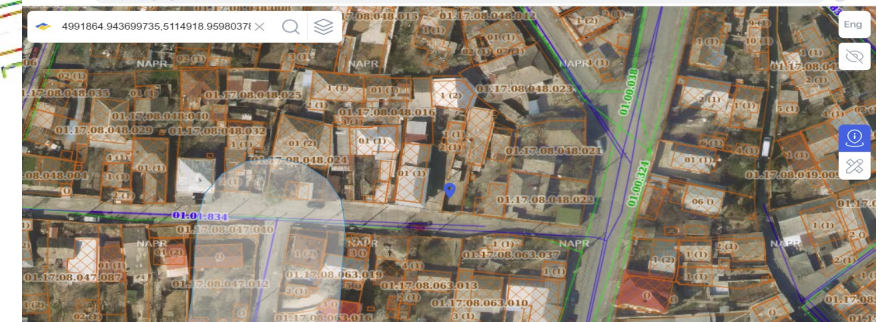
- Buildings
- Hydrography
- Nature
- Transport
- Utilities



Norwegian Ministry of Foreign Affairs



Kartverket



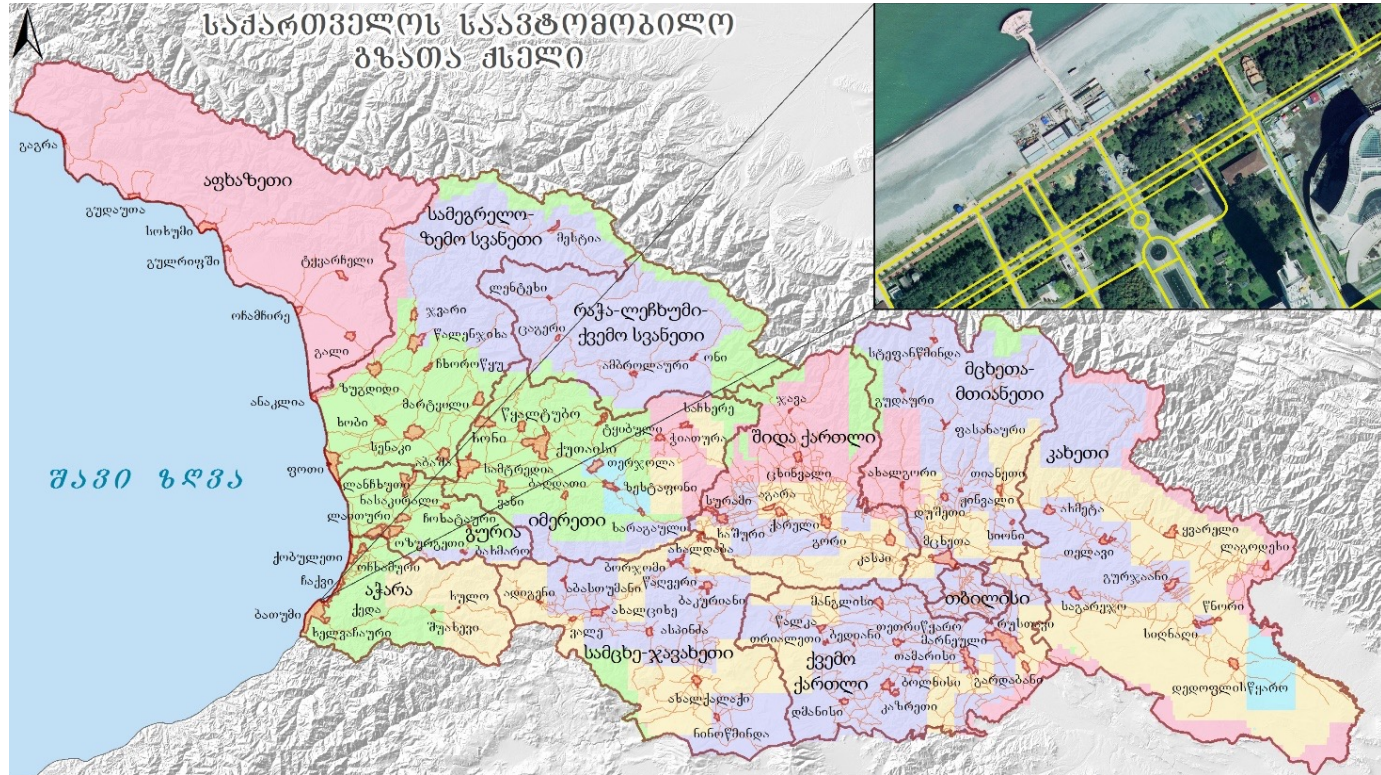
MINISTRY OF JUSTICE OF GEORGIA



NATIONAL AGENCY OF PUBLIC REGISTRY



# NAPR Geospatial Data - Road Network

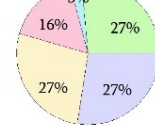


პირობითი აღნიშვნები

- დასრულებული
- განახლებული
- საავტომობილო გზა
- მიმდინარე
- ხარისხის კონტროლი
- დასახლებული პუნქტი
- საზღვარი
- დაგეგმილი

1:2.000.000

სამუშაო პროცესის პროცენტული და რაოდენობითი მახასიათებლები

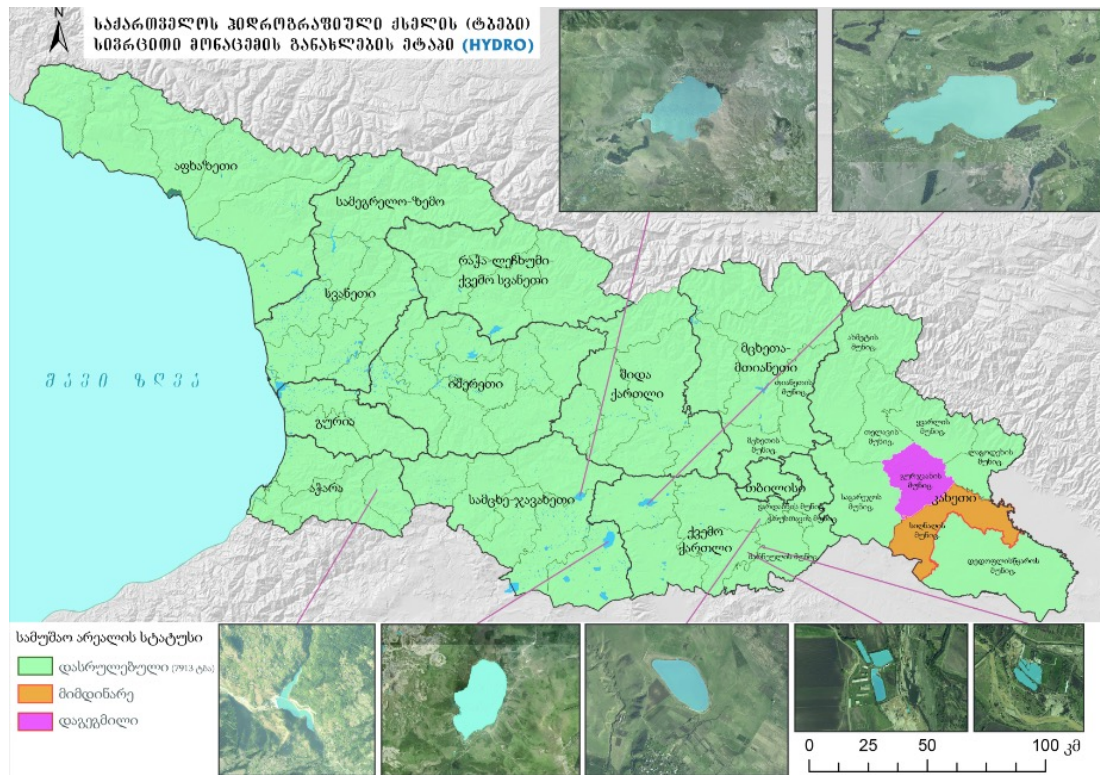


- დასრულებული 18101 კმ
- მიმდინარე 2938 კმ.
- დაგეგმილი 29261 კმ.
- განახლებული 30268 კმ.
- ხარისხის კონტროლი 29909 კმ.

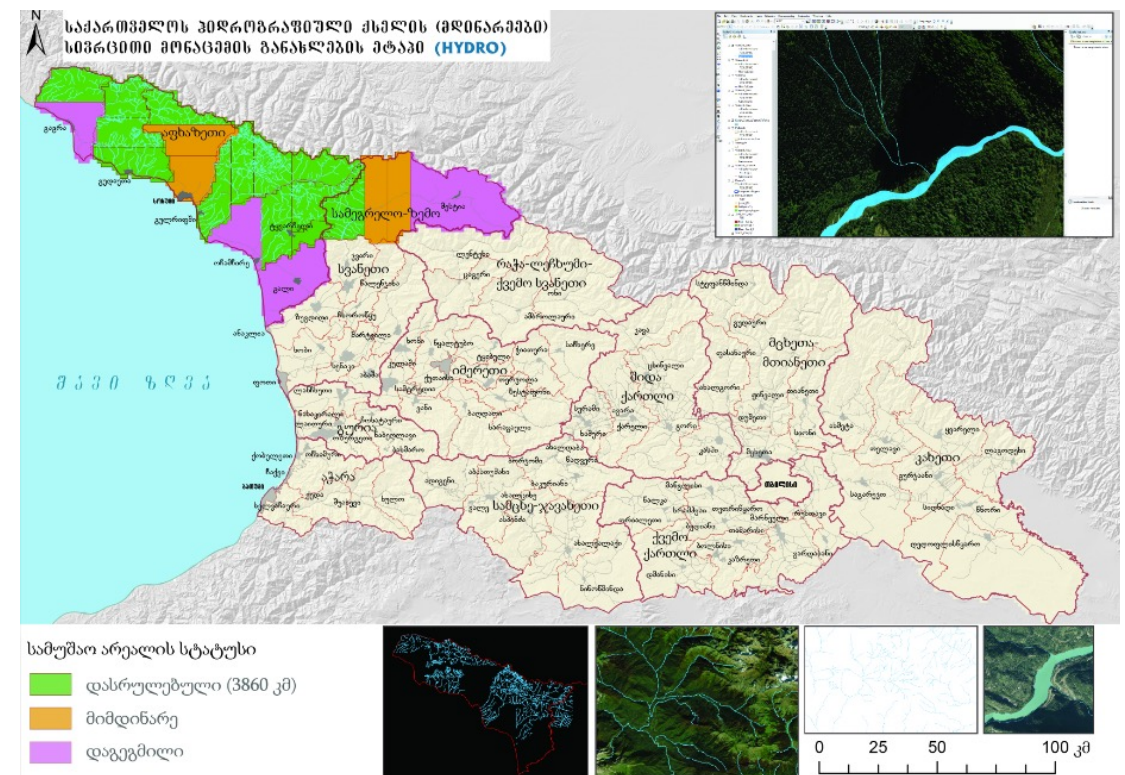


# NAPR Geospatial Data - Hydrography

## Lake/Reservoir/Swamp



## River/Canal



# Map Portal - [maps.gov.ge](https://maps.gov.ge)



Geospatial Data - accessible, public and free



Cadastral



Addresses



Administrative - territorial units



Transport



Hydrography



Orthophoto and satellite images



Topographic maps



User Management System



Crowdsourcing

# Social, Economic and Environmental Benefits



- Supporting implementation of the national development and SDGs
- Increasing in efficiency and reducing costs
- Supporting users to better leverage existing resources and improved decision making
- Meeting demands of ordinary and professional users, government and private sector
- Facilitating development of new products and services, supporting innovation

- Public administration
- Environment and forestry
- Disaster preparedness and response
- Land administration
- Agriculture, increasing crop yields
- Economic development
- Urban planning and management

- Greater private sector investment
- Creating new jobs
- National infrastructure
- Foreign policy, national security
- Regional development
- Health care
- Better asset management for utilities

**Government  
Business  
Citizens**



# Systematic Land Registration Reform 2022 -2024



## Completion of Initial Registration and Full Cadastral Coverage

>920,000 surveyed and >665,000 registered land plots by May, 2024

Drones for high resolution images

Orthoimagery, Geo-CORS



Electronic Minutes Application (EMA)



*Georgia's systematic land registration methodology and technological solutions recognized by the World Bank experts as exemplary globally.*

# Integrated Address Management

- ✔ Completion of the street address database  
2022-2023: 2 485 settlements, 45 692 streets, up to 354 927 new addresses
- ✔ Data validation between address and real estate registration databases
- ✔ Sharing of addresses with government agencies and private sector



# Strengthening NSDI

Smart and Informed Decision-Making for National Development: FAIR data



**NAPR - NSDI NATIONAL COORDINATOR**



**LAW OF GEORGIA ON NSDI – ADOPTED ON 16.11.2023**



**NSDI component – WB GRAIL project - 2023-2029**



Kartverket

**IGIF Project (02.2021 - 01.2022):** Baseline Assessment and National Report, Geospatial Alignment to Policy Drivers, Socio-Economic Impact Assessment and Action Plan.



MINISTRY OF JUSTICE  
OF GEORGIA



NATIONAL AGENCY OF  
PUBLIC  
REGISTRY



# EO and Remote Sensing - What's on the Horizon?

## Customer-Driven Products and Services

### AUTHORITATIVE DATA

High quality up-to-date geospatial data for evidence-based decision making.



### ACCESSIBLE AND USABLE

A Geoportal that provides an online integrated information resource.

### COLLABORATION AND VALUE

Cross-sector coordination and partnerships to sustain value for end users.

Technological Advancements

Changing and increasing customer demands

Enhanced value proposition

Security

Privacy and confidentiality

Ethical issues

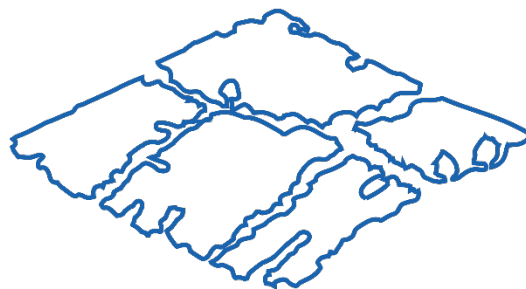
### KNOWLEDGE AND INNOVATION

Awareness knowledge and skills in geospatial technologies.

**Thank you for your attention!**



**MINISTRY OF JUSTICE  
OF GEORGIA**



NATIONAL AGENCY OF  
**PUBLIC  
REGISTRY**

 **2 405 405**

 **[www.napr.gov.ge](http://www.napr.gov.ge)**

 **[info@napr.gov.ge](mailto:info@napr.gov.ge)**