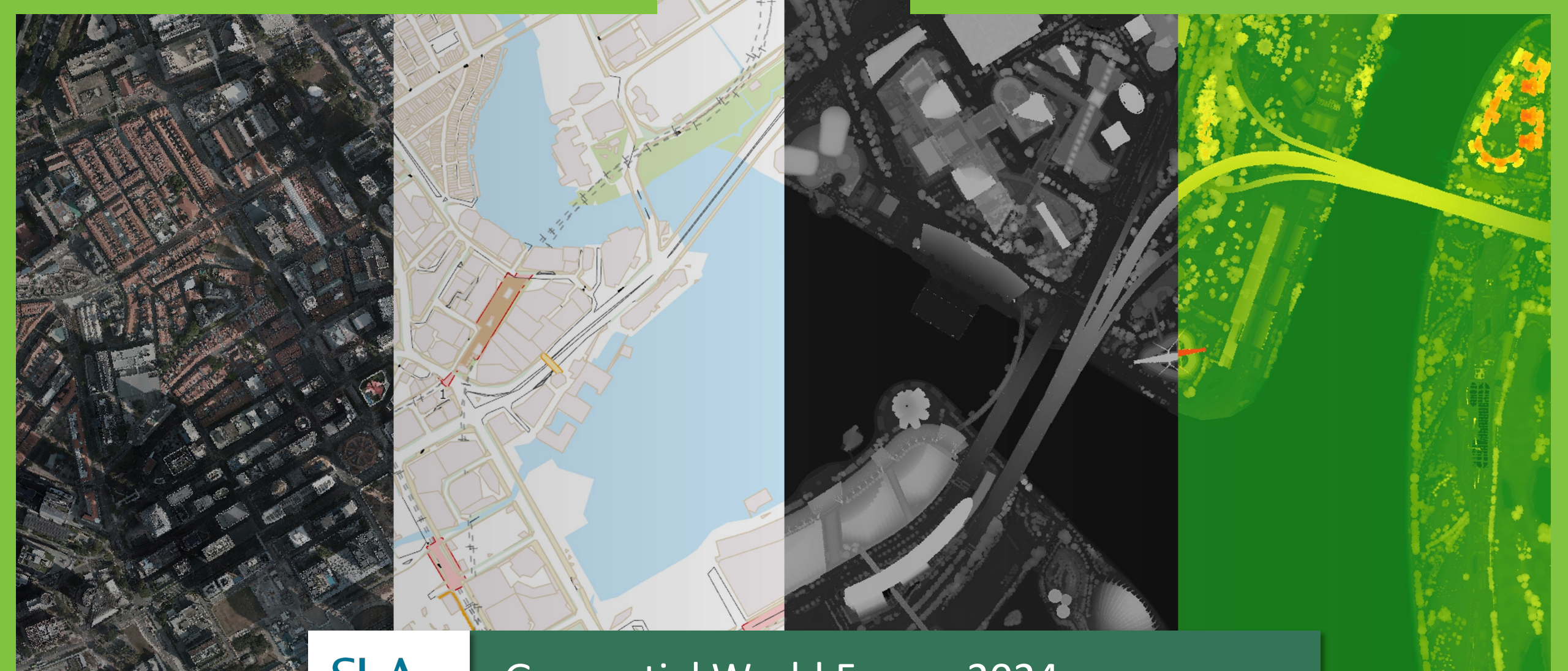




GWFF

GEOSPATIAL WORLD FORUM

[**CLICK TO KNOW MORE**](#)



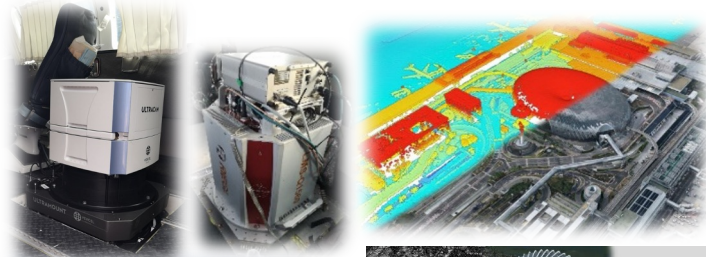
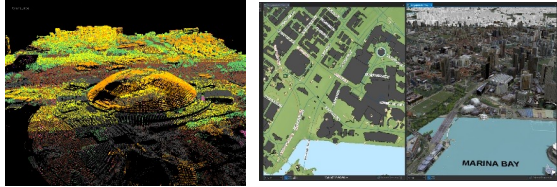
Geospatial World Forum 2024

Session 4: Earth Observation as a Service for National Mapping 15 May 2024

National 3D Mapping Programme



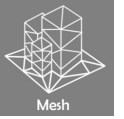
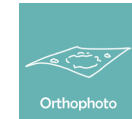
Commence
1st National
Mapping
Data
Capturing



Commence
2nd National
Mapping Data
Capturing



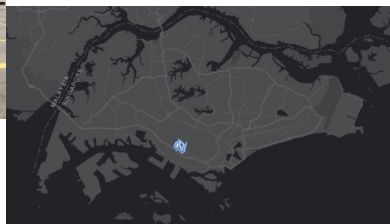
Commence
3rd National
Mapping Data
Capturing



Apr 2014

Jun 2015

Commence 1st Mobile
Mapping



Aug 2017

Year 1
Mobile
Mapping
Maintenance



Feb 2019

Year 2
Mobile
Mapping
Maintenance



Covid-19



Completion of
Mobile
Mapping
Maintenance



Mar 2024

- Supporting agencies for their application
- Prepare for Mobile Mapping Tender with committed agency

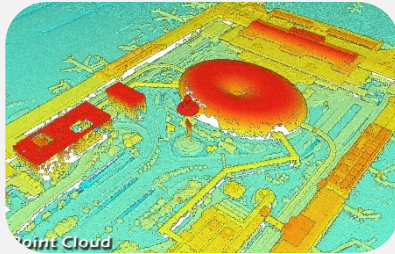


Deep capabilities in mapping and geospatial development

National Geospatial & Mapping Agency – Aerial Mapping



AERIAL MAPPING 3D DATA



Point Cloud



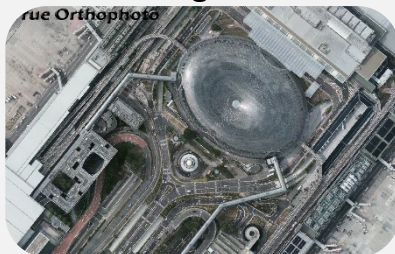
Reality Mesh



Building Model



Colour Infrared



True Orthophoto



DSM



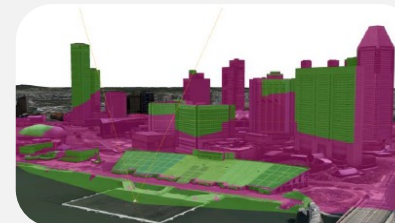
USE CASES



Coastal Protection



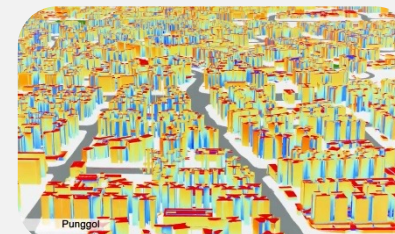
Urban Planning



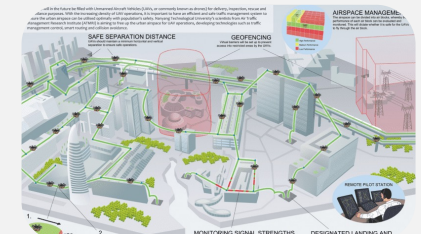
Emergency Response Preparations



Aerodrome Terrain & Obstacles



Solar Potential



Traffic Management

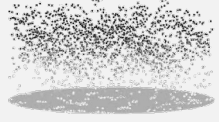
Deep capabilities in mapping and geospatial development

National Geospatial & Mapping Agency – Mobile Mapping



MOBILE MAPPING METHODOLOGY & DATA

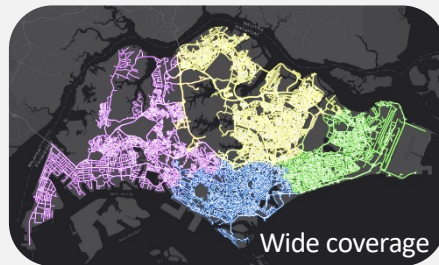
600 Billion Points



3 Million Panoramic
Images



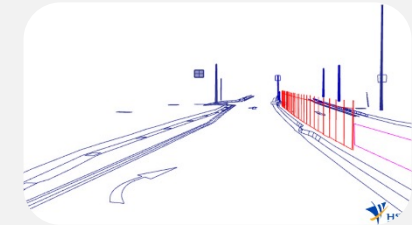
5,500 km
Public Street



USE CASES



Tree Asset Management



Forensic Reconstruction



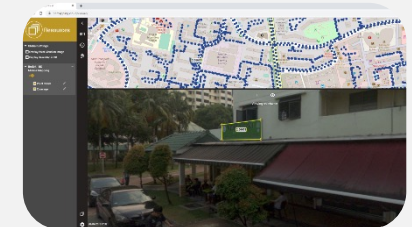
Driverless Vehicle Testing



Site Planning



Measurement



Regulation

Adopted Technologies

Space-based



Aerial systems



Unmanned Aerial Vehicle

Examples:

- Remote Sensing
- Photogrammetry
- Laser Scanning
- GPS/GNSS
- Total Station
- Ground Penetrating Radar
- Multibeam Echosounder
- ...



Ground based Systems

Mobile Mapping Systems



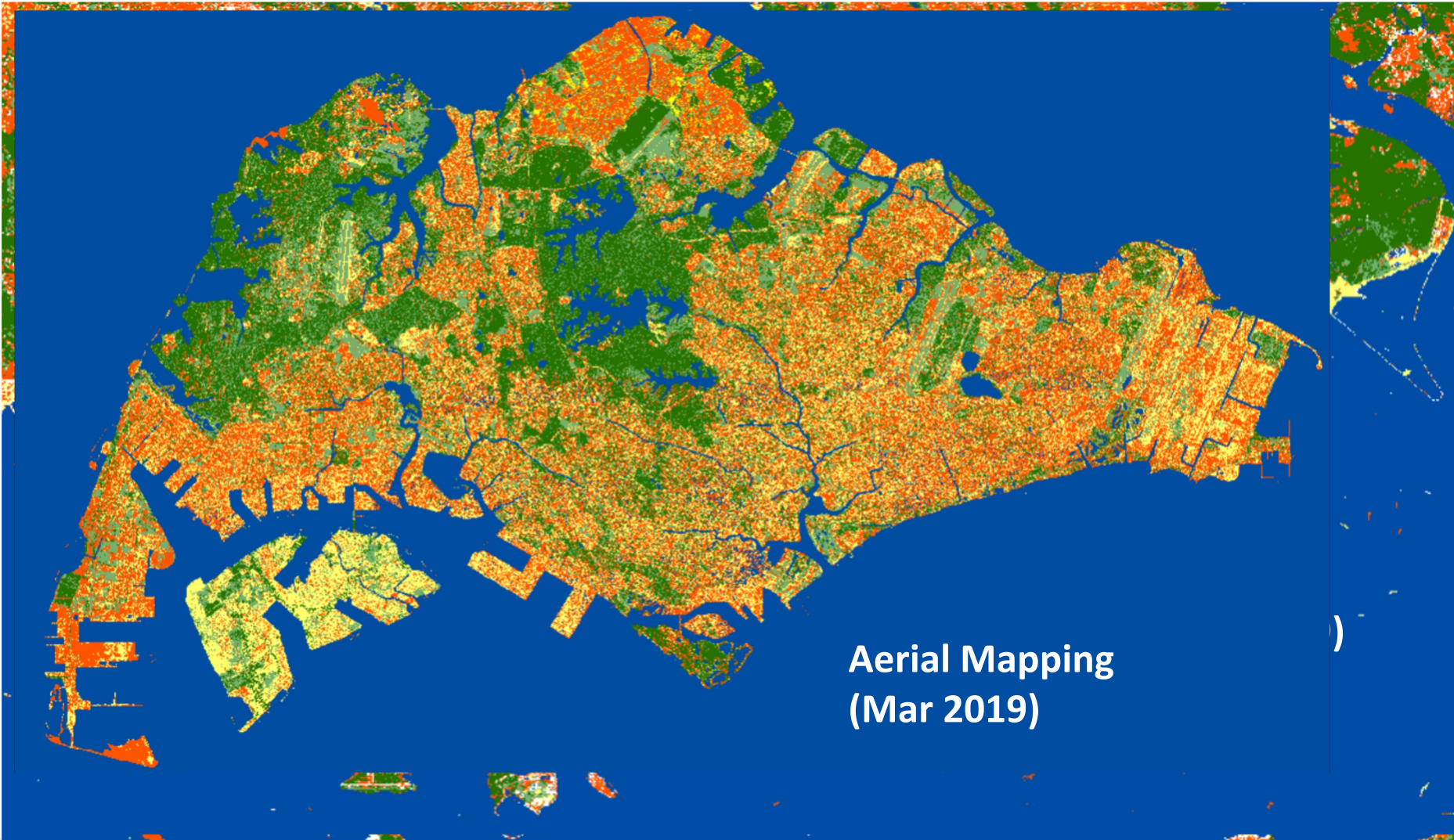
Subsurface

Hydrography



Mapping from Space

Landcover



Mapping from Space



Coastline

Mapping from Space

Map Updates



Monitoring Singapore

Change Detection

SMU buildings & Cathedral of the Good Shepherd



Pleiades – Aug 2022

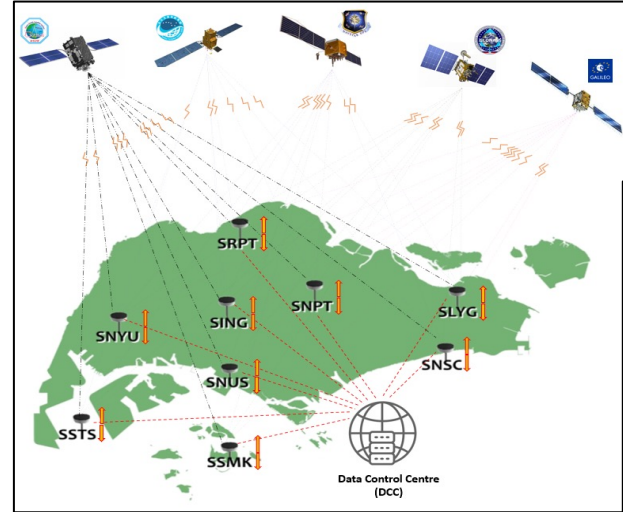


Aerial Mapping – Mar 2019

Monitoring Singapore

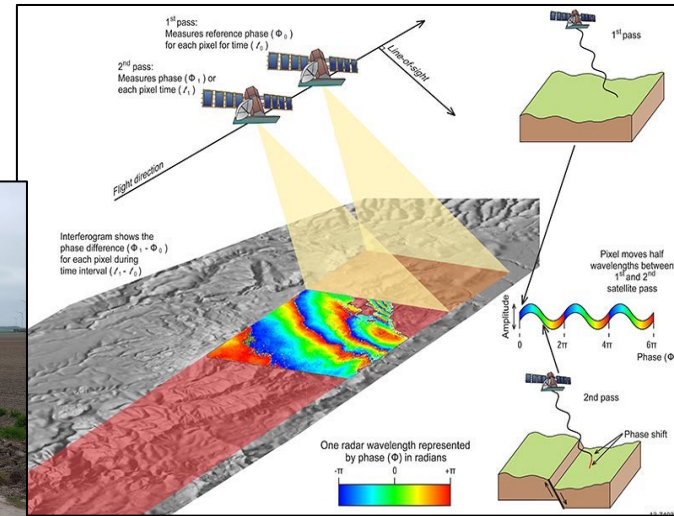
Vertical Land Motion

Singapore Satellite Positioning Reference Network

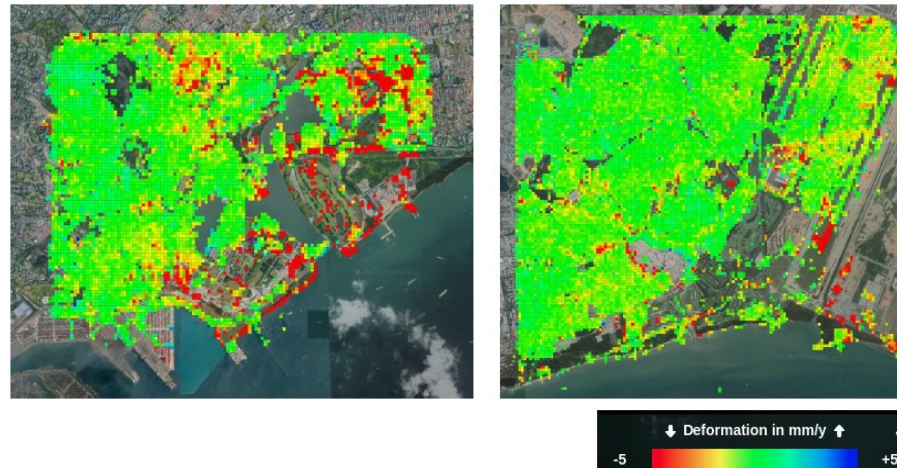


Geodetic Instrumentation

Interferometric Synthetic Aperture Radar



Patent # 2019103.21,
June 2017, Patent
Cooperation Treaty (PCT)



Actionable information that enables informed decision making for **climate change adaption and mitigation.**

Nationwide VLM information product, absolute, referenced and validated

Leveraging AI for Mapping



Before & After Mask



- Protect privacy-related information
- Auto labelling function to replace labour intensive labelling works
- Achieve 99% face and license plate detection

- Trained ML model used to detect **static objects** such as solar panel, swimming pool, fire hydrant, tree species and manhole cover



THANK YOU

