



[**CLICK TO KNOW MORE**](#)

LEADING-EDGE TECHNOLOGY IN INEGI'S GEOGRAPHIC WORK

GEOSPATIAL **WORLD FORUM 2024**

Brenda Alejandra Muñoz de Luna
Head of Department of Geosystems
National Institute of Statistics and Geography (INEGI)



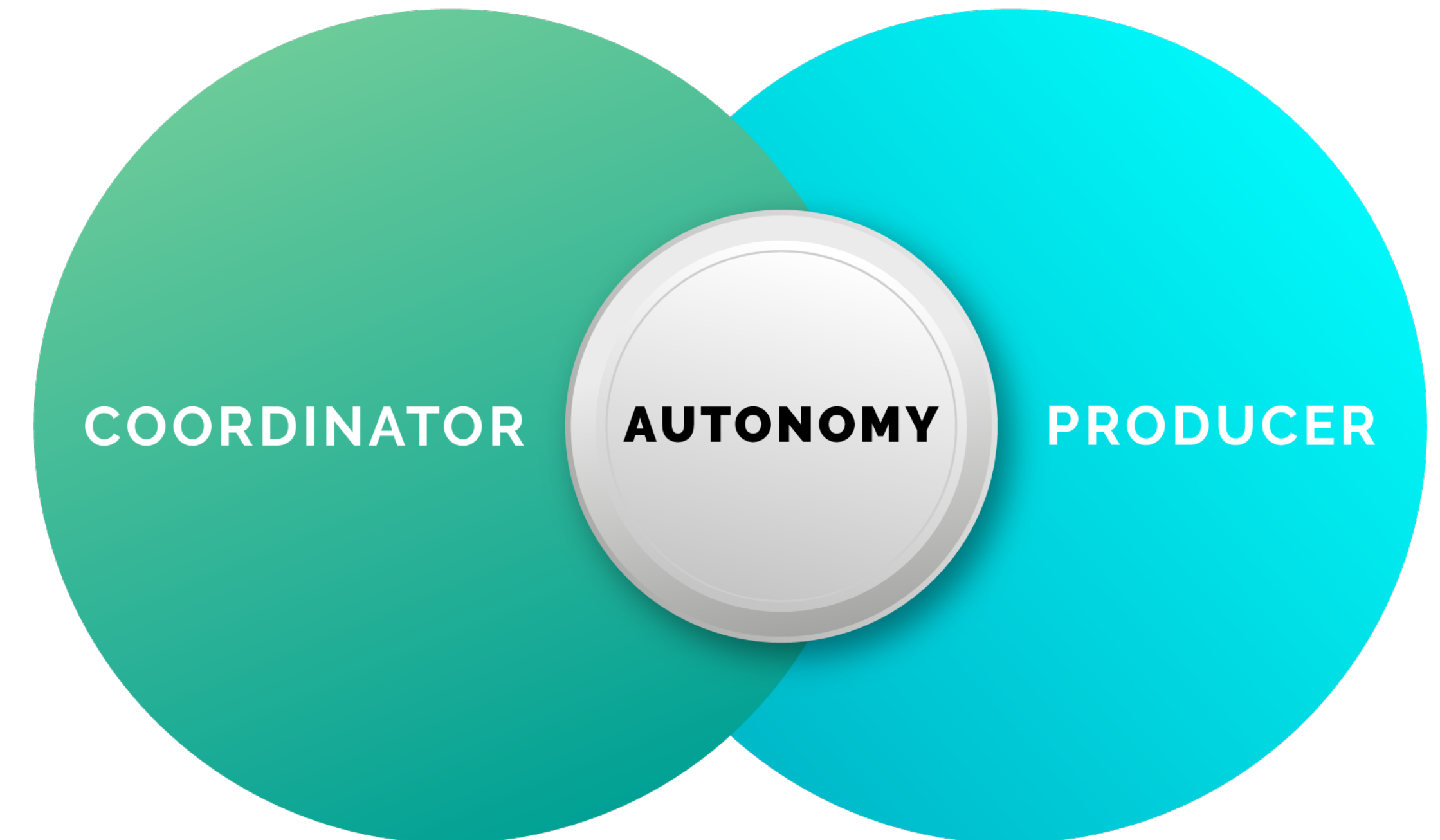
THE NATIONAL INSTITUTE OF STATISTICS AND GEOGRAPHY (INEGI)



Key Elements

- Statistical and Geospatial Information within the same institution, since 1983
- Constitutional-level autonomy, since 2008
- Coordination of the National System of Statistical and Geographic Information (SNIEG)

**STATISTICAL AND GEOGRAPHICAL
INFORMATION OF NATIONAL INTEREST**

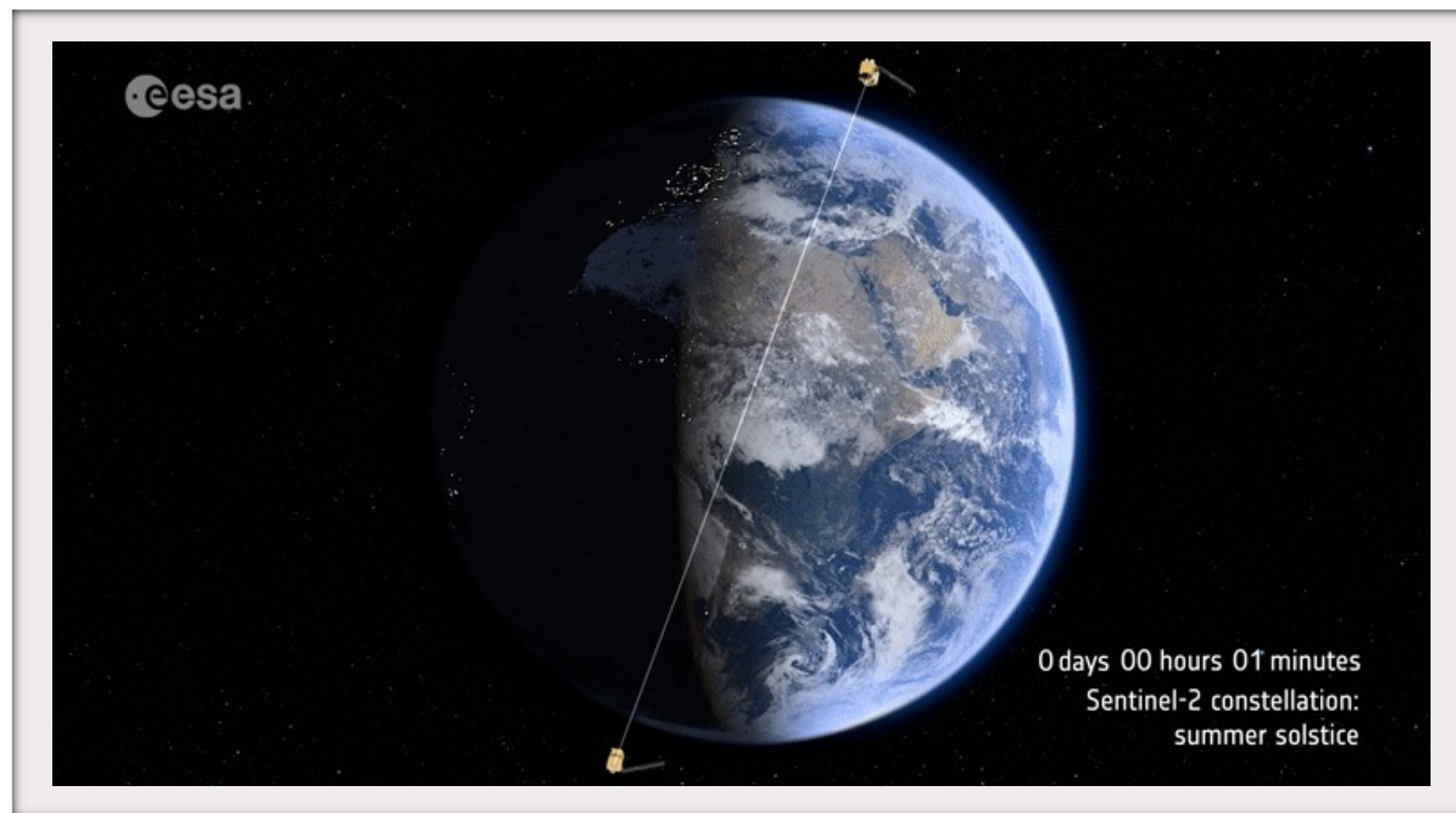


BIG DATA AND MACHINE LEARNING AT INEGI


The Mexico Geospatial Data Cube (CDGM)
Having Landsat (35 years) y Sentinel 2 (4 years) images.

Open Data Cube implementation

- “One pixel at time”
- Analysis ready data (ARD)
- Massive processing and analysis




OPEN DATA CUBE



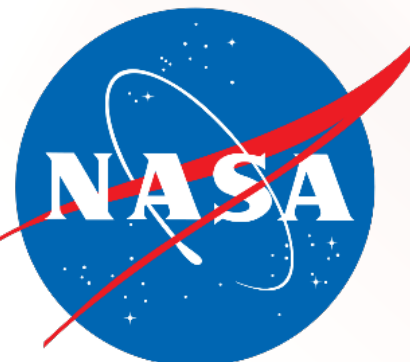
Australian Government
Geoscience Australia



CEOS



USGS
science for a changing world



NASA



PRODUCTS

Geo-median image.



NEW METHODOLOGY FOR VEGETATION AND LAND USE MAPPING

- Need for updated and detailed geospatial data about the spatial extent and condition of the vegetation.
- Leverage:
 - Specialized knowledge of the vegetation (people).
 - Available satellite imagery and other geospatial ancillary layers (DEM, Climate, etc).
 - Modern tools for AI and geospatial data processing.
- Now in experimental phase, promising results.



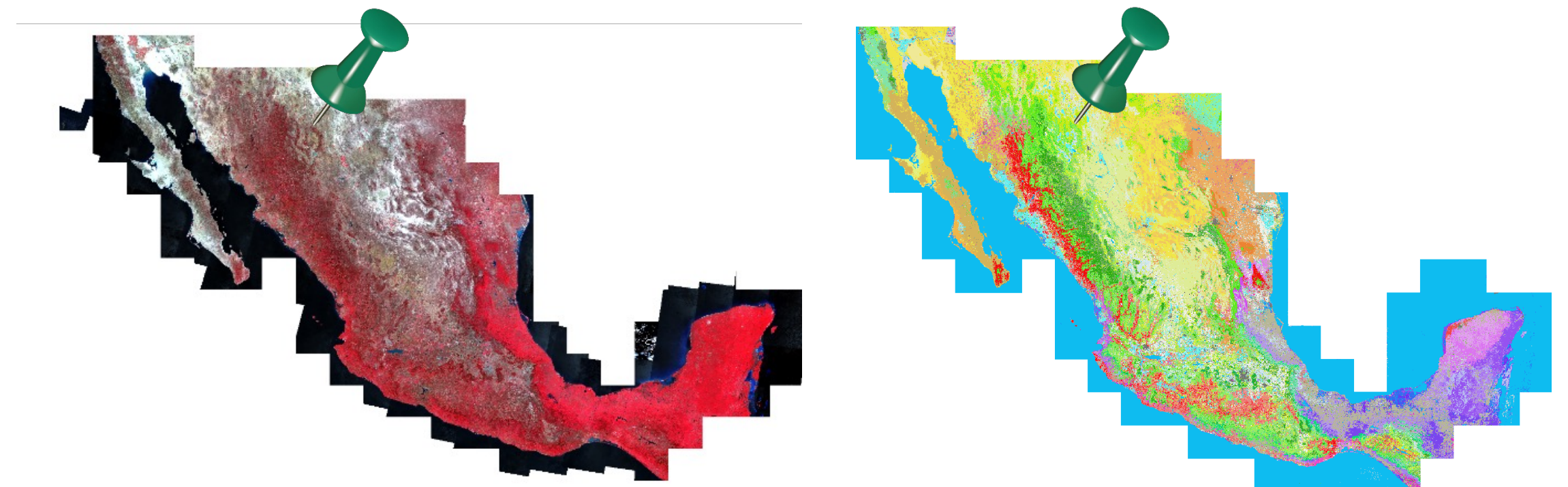
PYTHON



TensorFlow



Keras



Thank you!

Contact:

brenda.munoz@inegi.org.mx

**Conociendo
México**

01 800 111 46 34

www.inegi.org.mx

atencion.usuarios@inegi.org.mx



INEGI Informa