



GWFF

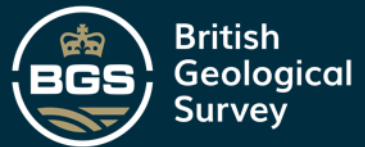
GEOSPATIAL WORLD FORUM

[**CLICK TO KNOW MORE**](#)

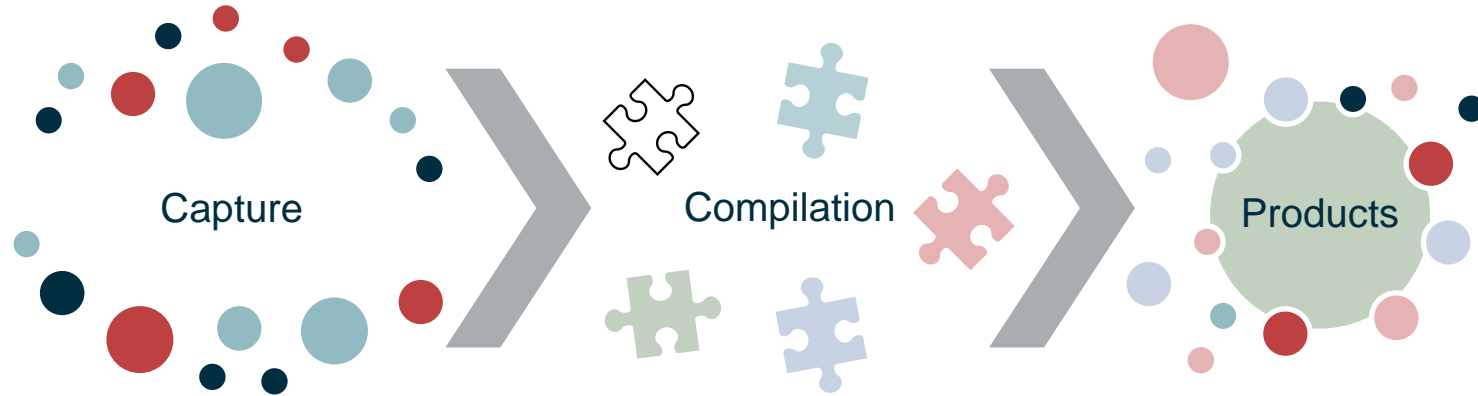


Robust, transparent and repeatable digital geological mapping

DR CHRIS WILLIAMS
HEAD OF DIGITAL MAPPING

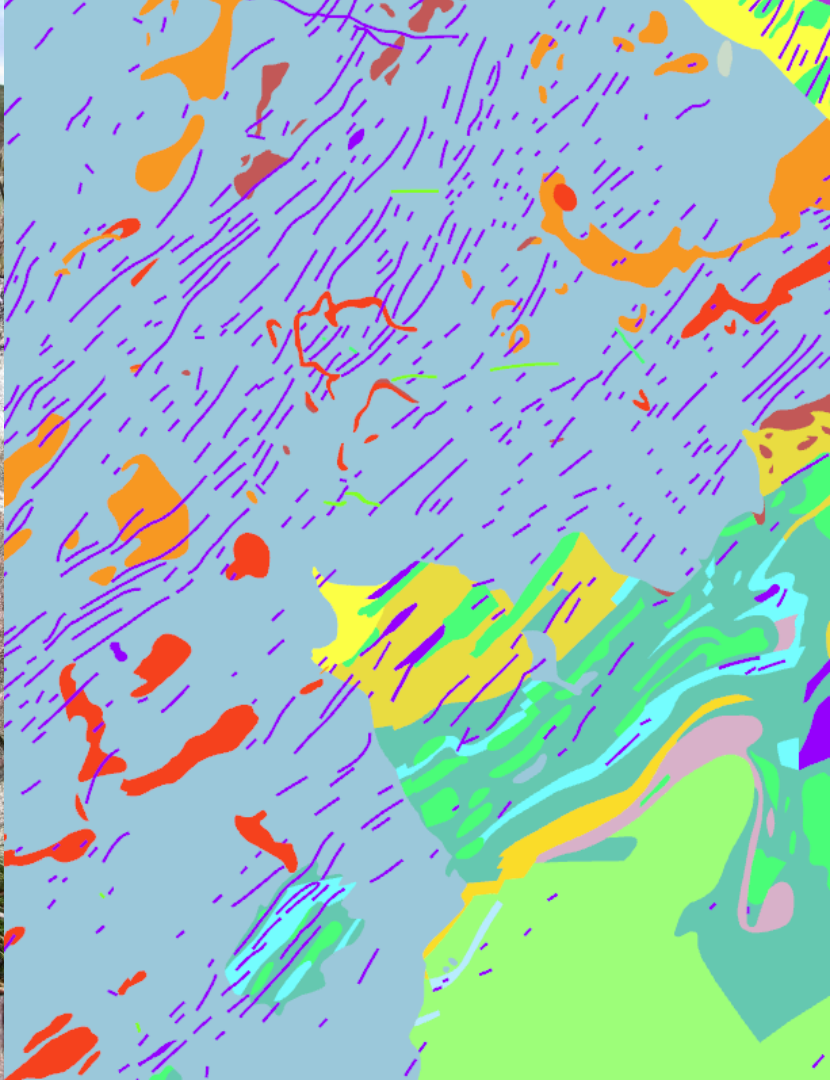


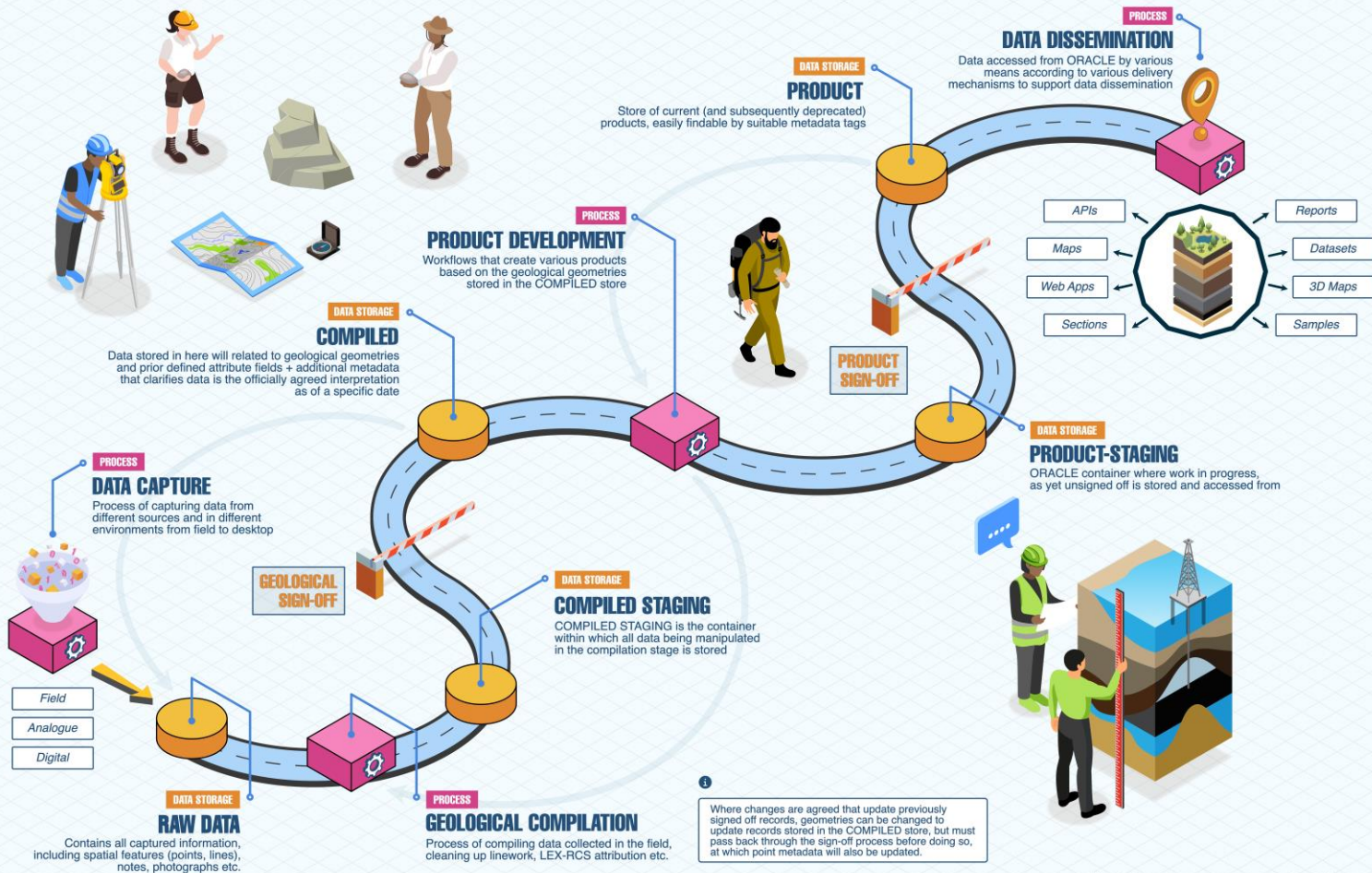
To define, develop and
maintain the tools and
pipelines that underpin
BGS's geological mapping
capability – from capture, to
compilation and
product development



Core elements

- User-driven design
- Enable, not hinder
- Knowledge value chain stage separation
- Transparency through auditing
- Maximising accessibility





Integration of new technologies



Analysis ready
Data

Ease of access
Minimal wrangling



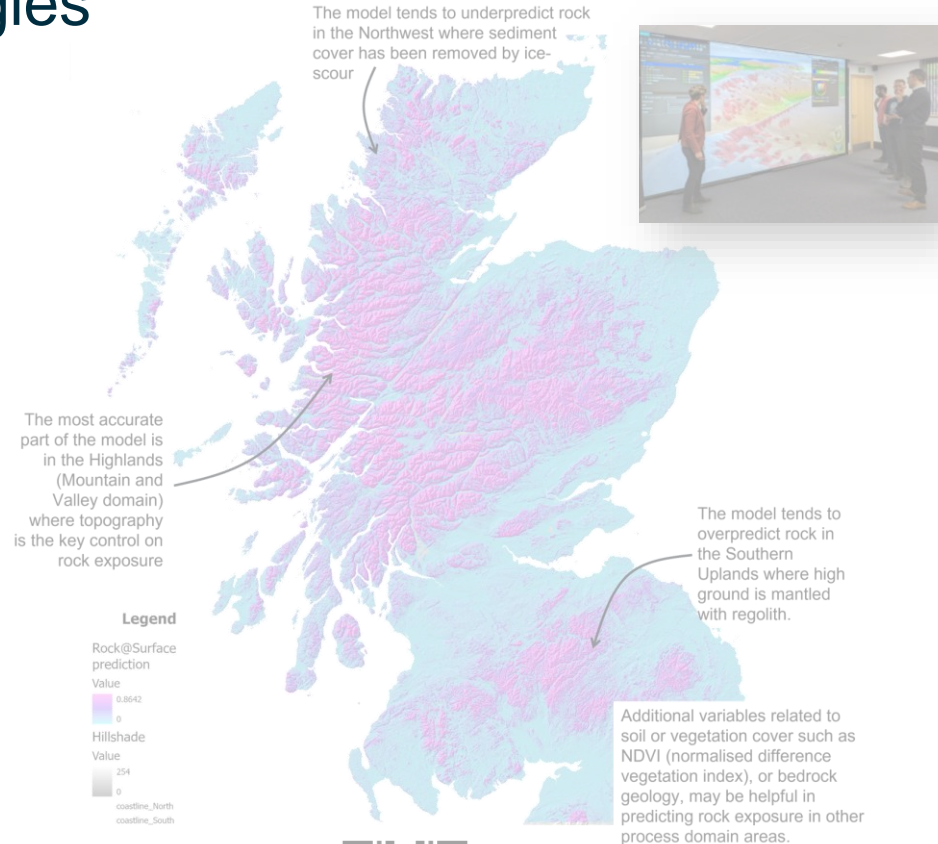
New methods

Assisted vs Automated
Product creation



Standards

Acquisition, quality,
access, delivery



Integration of new technologies



Analysis ready
Data

Ease of access
Minimal wrangling



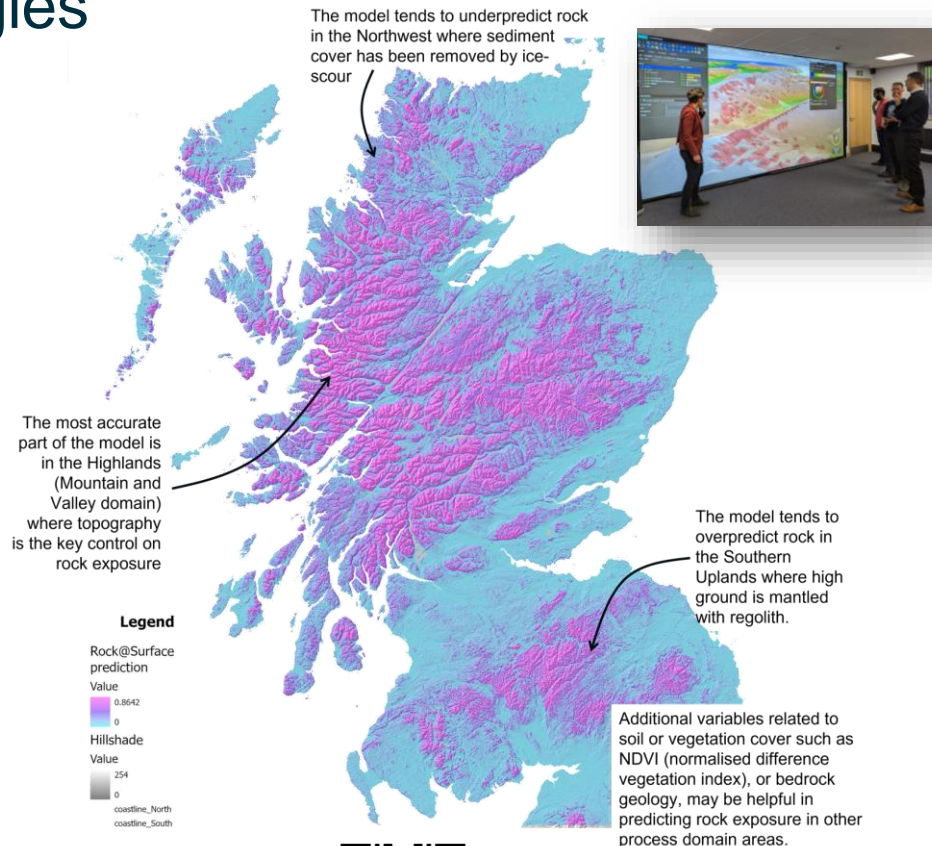
New methods

Assisted vs Automated
Product creation



Standards

Acquisition, quality,
access, delivery



Managing the change



Legacy and lessons learned



On-going communication



Solution co-design



Training and documentation



Shadowing and knowledge exchange



System sustainability

Extensible

System agnostic

Horizon scanning

Dr Chris Williams

Head of Digital Mapping

chrwil@bgs.ac.uk

[LinkedIn](#)

