



[**CLICK TO KNOW MORE**](#)



Geospatial
Commission

Harnessing Geospatial Markets to grow the UK economy and geospatial capability

*Síle Martin- Remote Sensing Senior
Policy Advisor, Geospatial Commission*

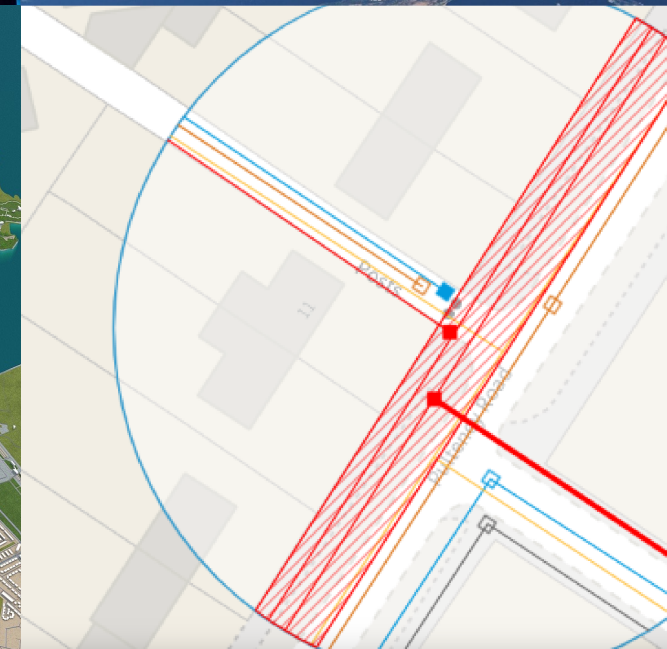
15th May 2024



About us

The Geospatial Commission is an expert committee responsible for setting the UK's geospatial strategy and coordinating public sector geospatial activity.

We are part of the Department for Science, Innovation and Technology.



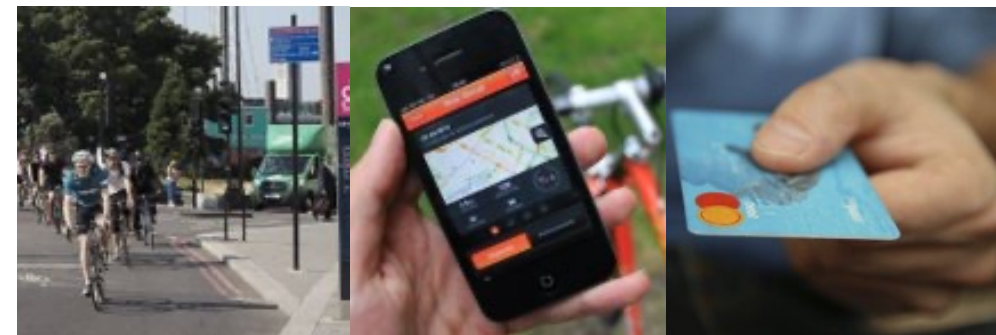
Keeping pace with fast evolving geospatial markets

- What are the public sector's current and future requirements for accessing these technologies?
- How can we encourage greater uptake and innovative application?
- How can we stimulate market growth?



Image Credit: Airbus
Defence and Space

Remote Sensing Programme



Population Movement Data Programme

Developing deep market understanding

Our approach

- Harnessing UK expertise
 - DSIT Expert Exchange programme
- Convening facilitated market discussions
 - Developing a future vision to drive use of EO across the public sector
- Market reviews
 - We have committed to conduct reviews of the Remote Sensing and Population Movement Data markets this year



Driving public sector innovation

- **Commercial Earth Observation Data Access Pilot**
 - Testing ways the UK public sector can efficiently access high-resolution commercial satellite data and apply it to a variety of use cases (including environmental, defence, marine and emergency response)
- **Population Movement Data Innovation Sandbox**
 - Purchasing population movement data for use by public sector departments so they can test its application in a range of innovative use cases

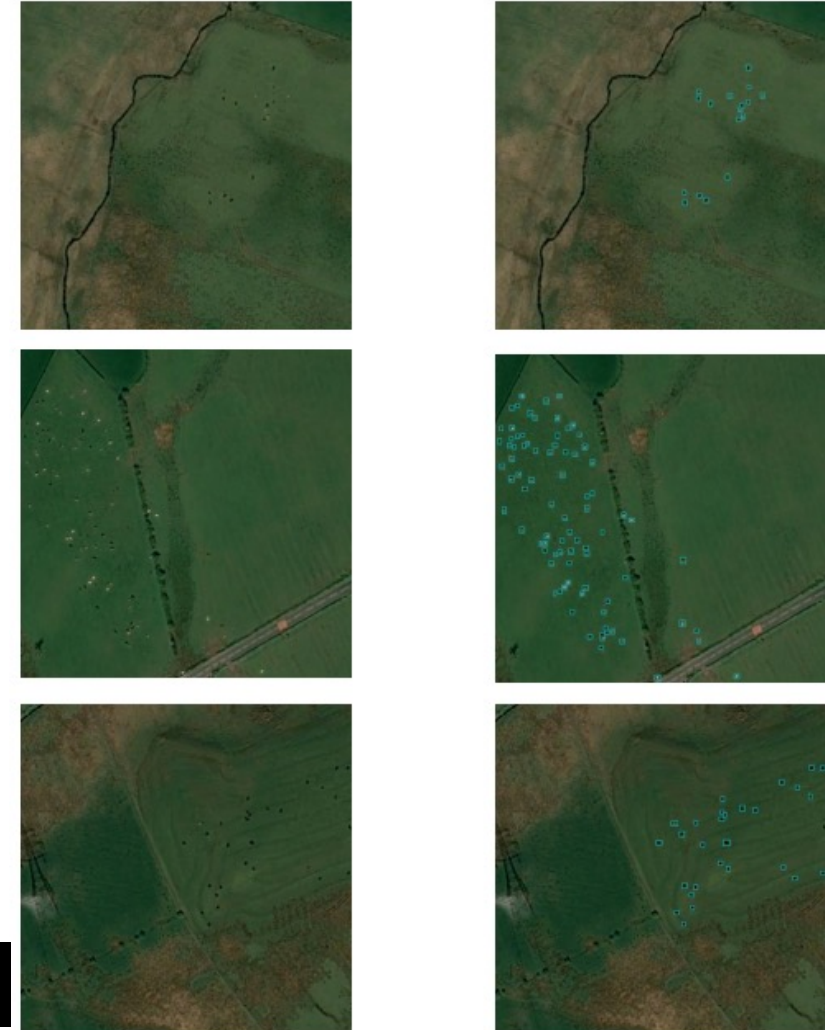


Image Credit: Scottish Environment Protection Agency

Thank you

Contact details

Sile Martin
Remote Sensing Senior Policy Advisor, Geospatial Commission
Email: sile.martin@dsit.gov.uk

www.gov.uk/geospatial-commission | <https://twitter.com/GeospatialC>