



GWFF

GEOSPATIAL WORLD FORUM

[**CLICK TO KNOW MORE**](#)



CENTRE FOR POLICY RESEARCH
AND ANALYSIS OF CAPITAL CITY



MONGOLIAN GEOSPATIAL
ASSOCIATION

APPLICATIONS OF GEOSPATIAL KNOWLEDGE INFRASTRUCTURE IN URBAN POLICY AND PLANNING

13-16 May, 2024
Rotterdam, Netherlands

ENKHJARGAL.N (Ph.D) Head of Spatial Data Analysis Department, CPRA
Board member of the Mongolian Geospatial
Association (MGA)

DAGVA.R Director of CPRA

BOLORMAA.B (Prof.Dr) Department of Geography, National University of
Mongolia



» CPRA INTRODUCTION

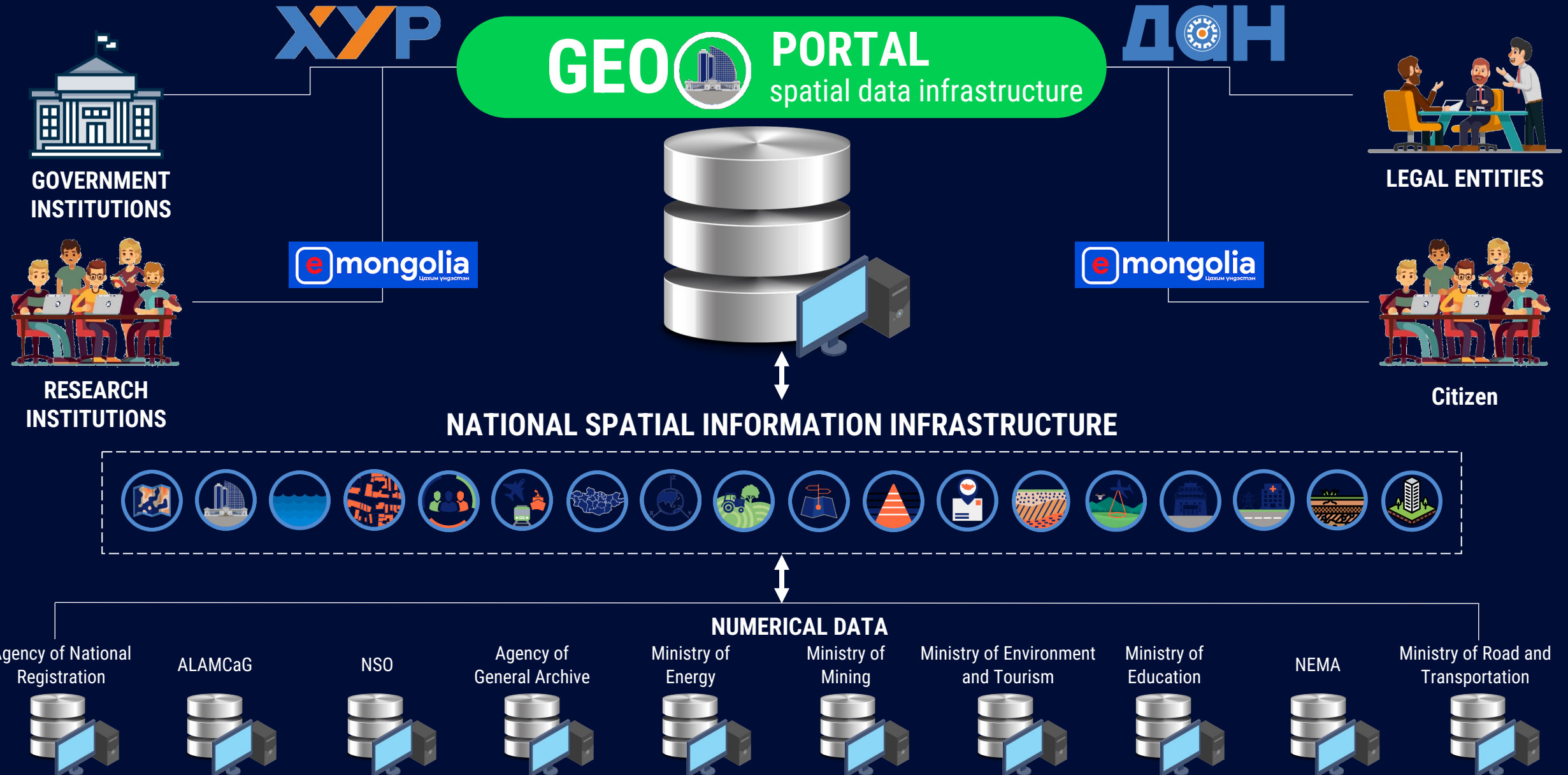
In a long-term strategy within VISION-2050, develop a solution to create a comfortable living environment for the citizens of Ulaanbaatar at the same level as the World Capital Cities Development Index



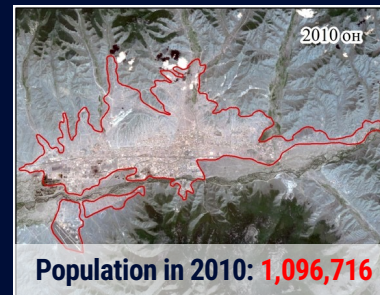
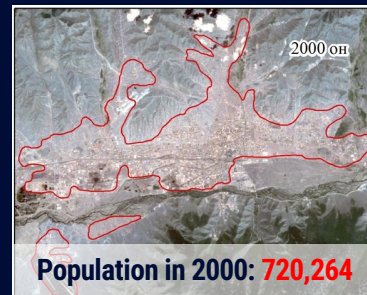
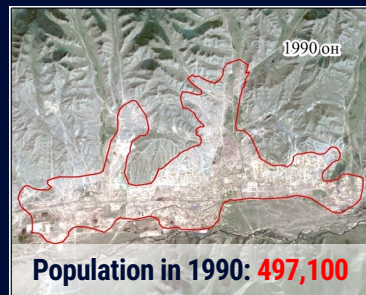
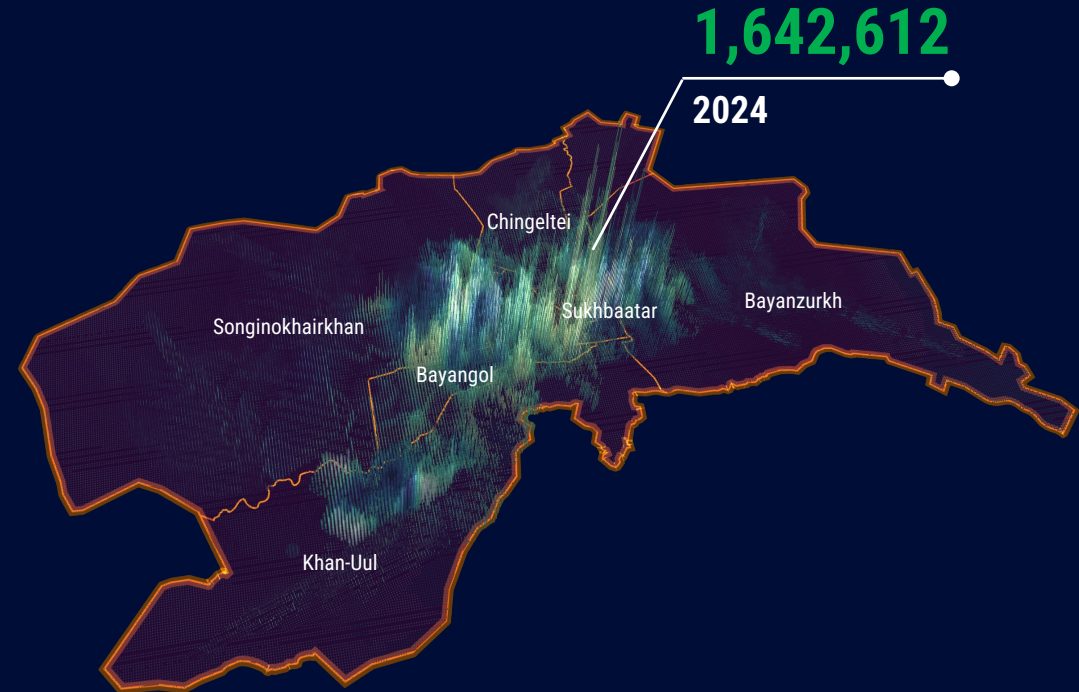
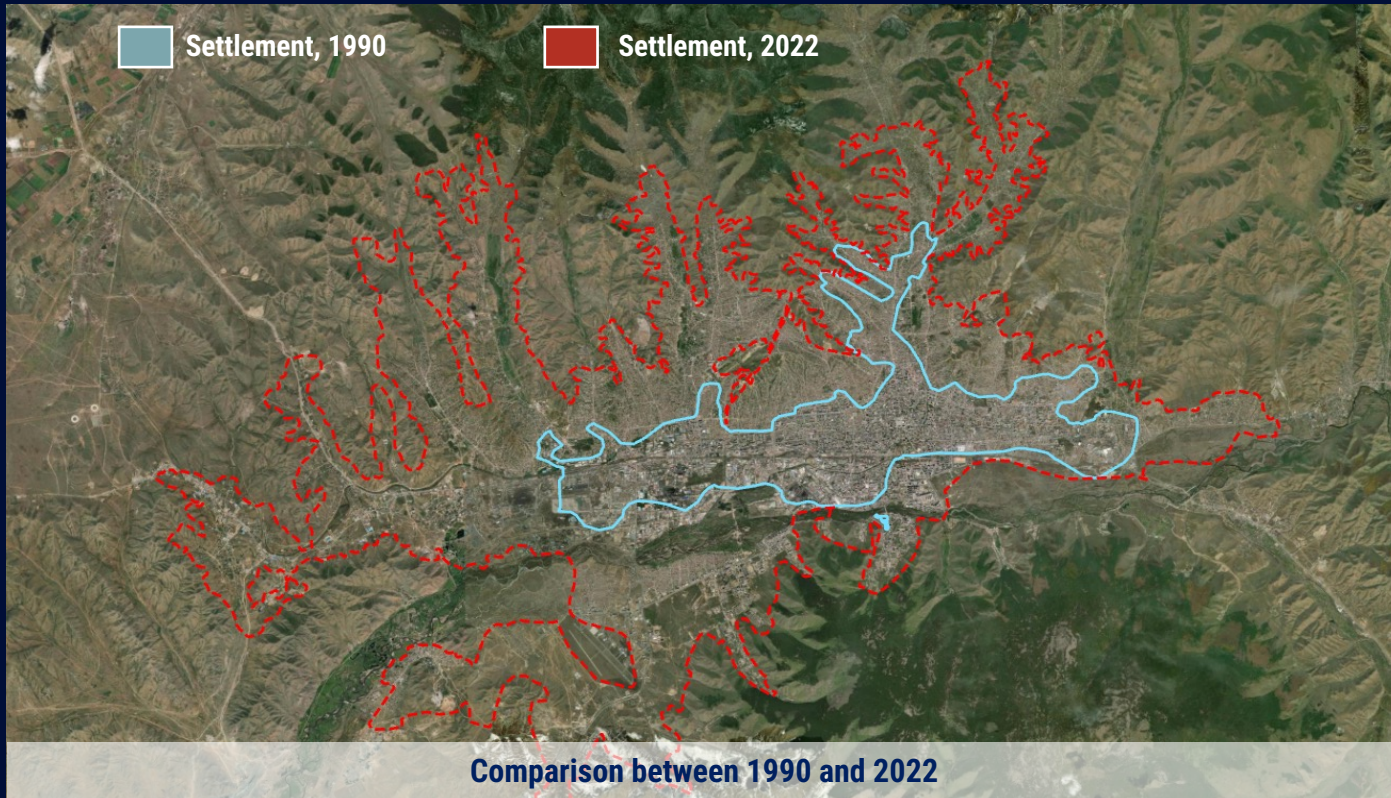
The Centre for Policy Research and Analysis (CPRA) with the function of studying the problems of the capital city's development history, prospects, urbanization, urban development, population, and the environmental study included "analysis center has been established and operating successfully for the capital city's governor" for the first time in Mongolia.

CPRA aligns its research with the "Vision-2050" policy and in the ninth chapter of the long-term policy, "Ulaanbaatar City and Satellite City", four main goals have been proposed: people-centered city, environment-centered solutions, planning-centered development, and good city governance.

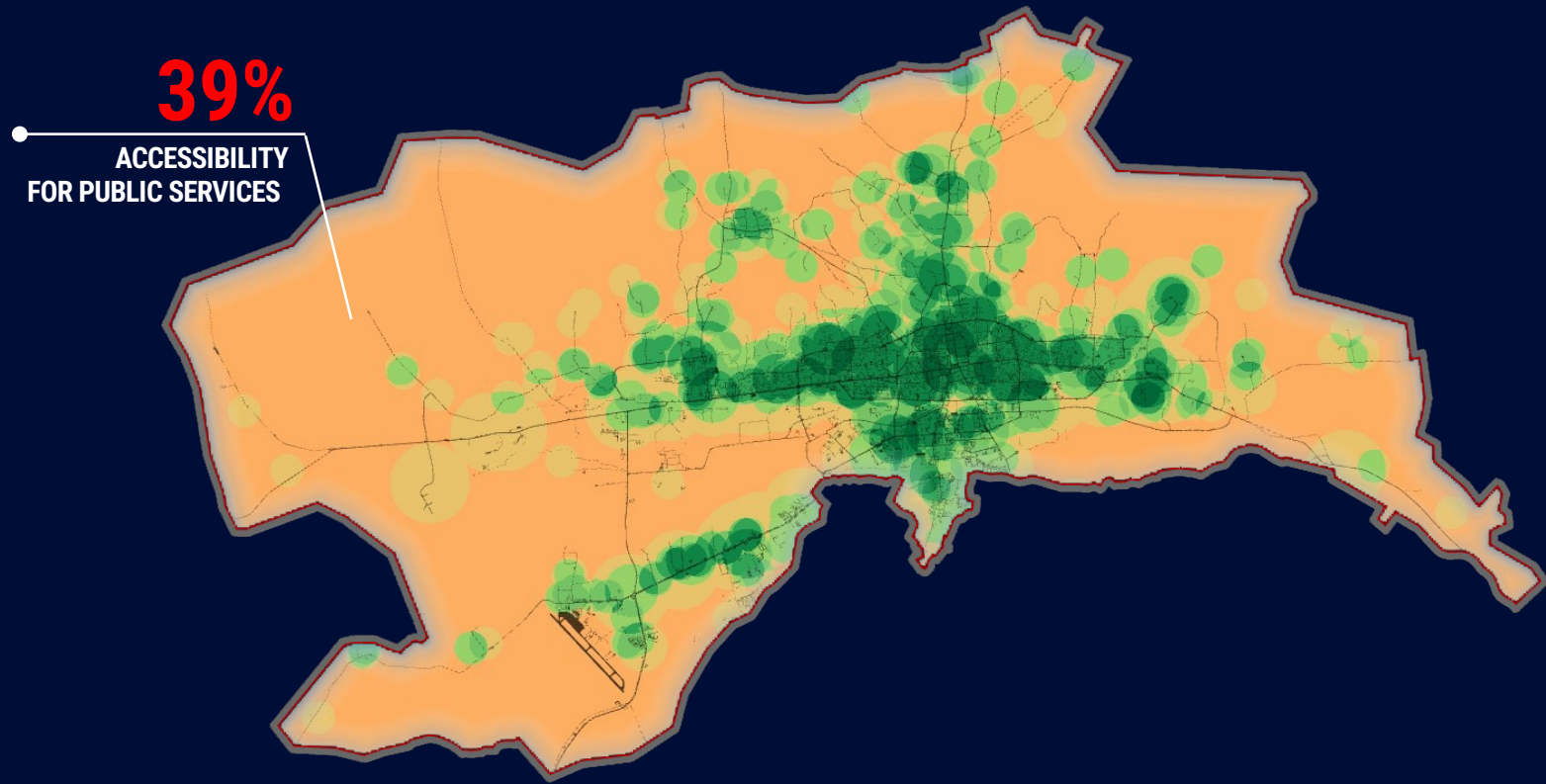
» NATIONAL SPATIAL INFORMATION INFRASTRUCTURE



» HIGH TRAFFIC AGGLOMERATION

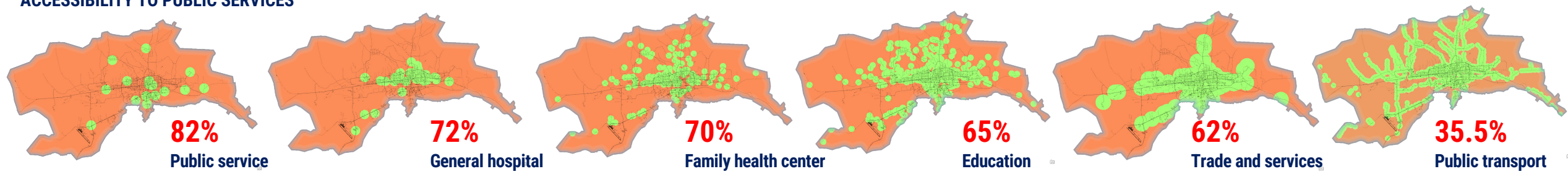


INACCESSIBILITY



	Services	Number of population (Further locations from public services)	Percentage of population in (Further locations from public services)
1	Public service	1,249,972	82%
2	General hospital	1,091,459	72%
3	Family health center	1,059,810	70%
4	Kindergarten	1,025,564	67%
5	School	980,899	64%
6	Trade and services	944,259	62%
7	Public transport	540,664	35.5%
	Inaccessibility, average	1,148,771	61%

ACCESSIBILITY TO PUBLIC SERVICES



■ Number of the population (Limited accessibility)
 ■ Number of the population (Full accessibility)

Source: Prepared according to City Standards and Standards of the Inspection Department

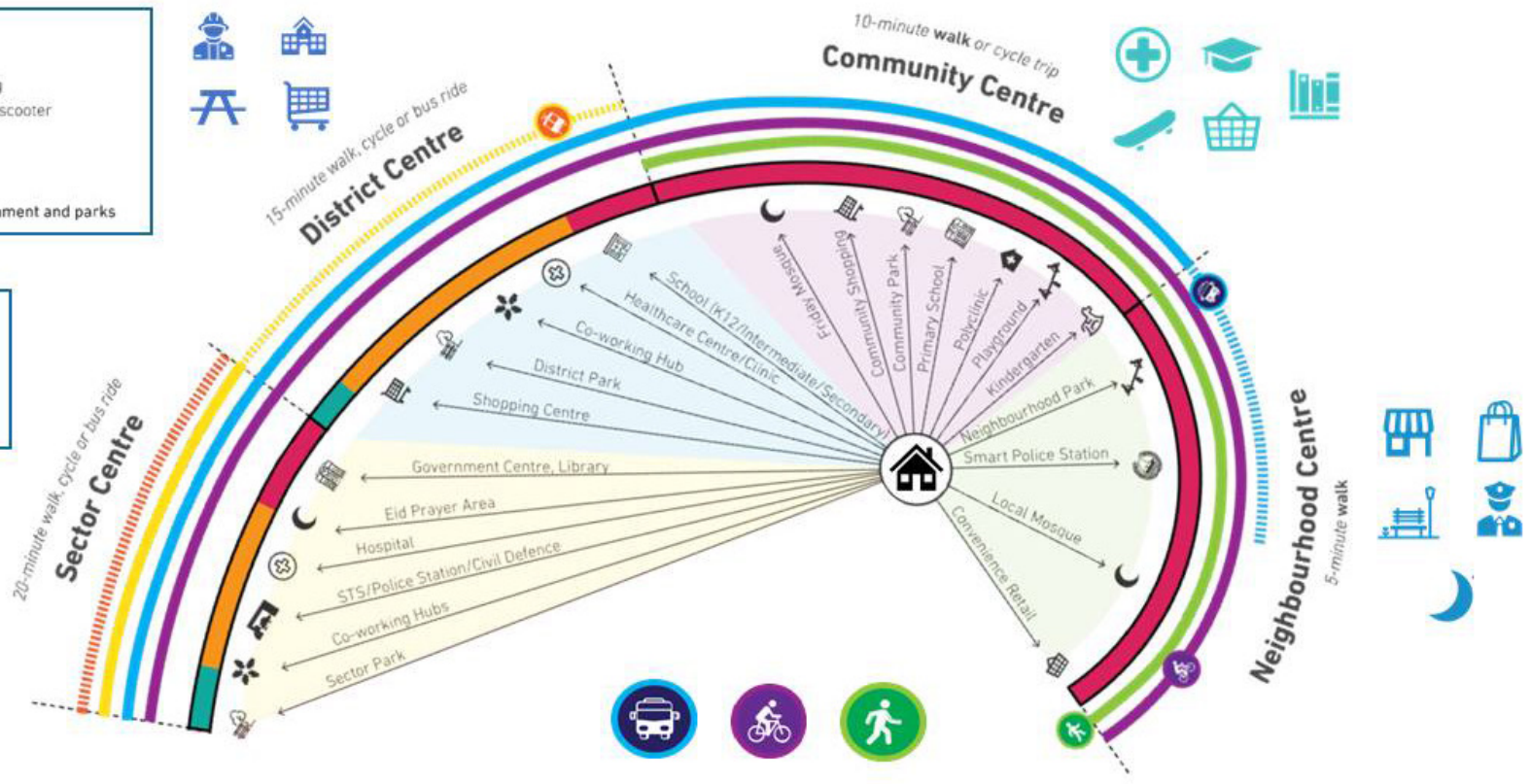
THE 20 MINUTES CITY

20 minute walk distance

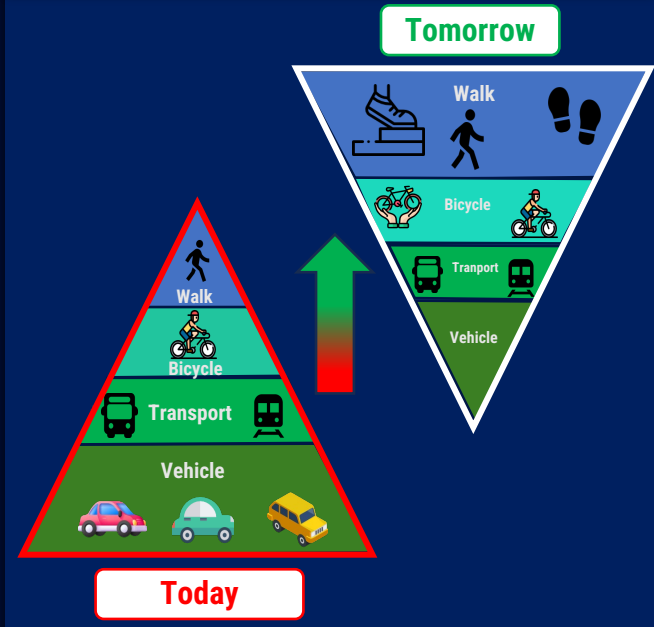
Walk =  1.7 km
 Bicycle =  4.8 km

-  Tier 1 transit: Metro
-  Tier 2 transit: light rail
-  Tier 3 transit: Bus/ ridesharing
-  Soft mobility: cycling/ electric scooter
-  Soft mobility: walking
-  Employment
-  Residential
-  Community facilities, entertainment and parks

20 minutes by
 E-bike = 5.0km
 Bicycle = 3.0km
 Walking = 1.7km



THE 20 MINUTES CITY PLANNING

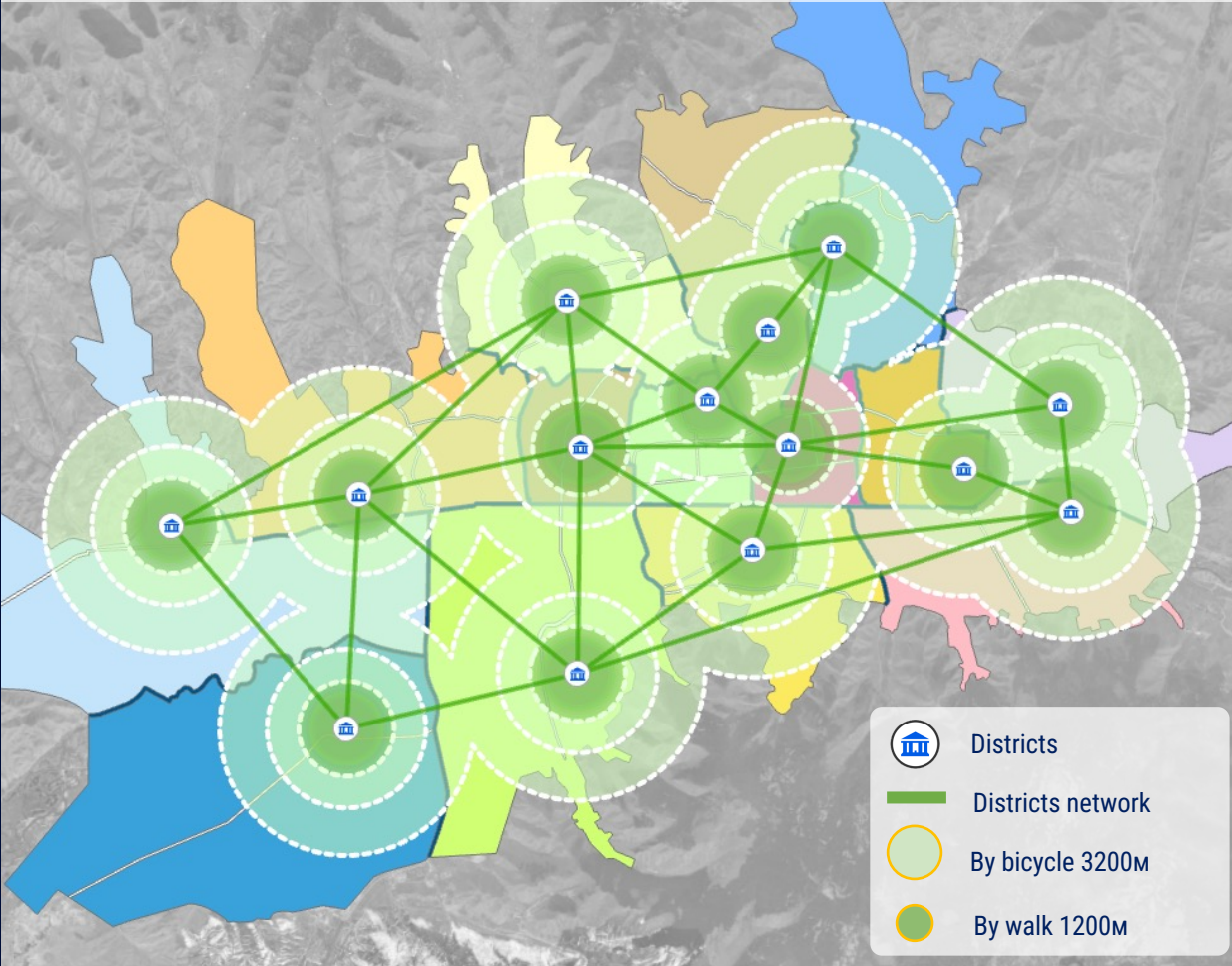


- ✓ Tactical urbanization, or short-term citizen-participatory habitat improvement policies
- ✓ Citizens will have an opportunity to access all kinds of basic services within a 20-minute by bike ride or walk from their residential area

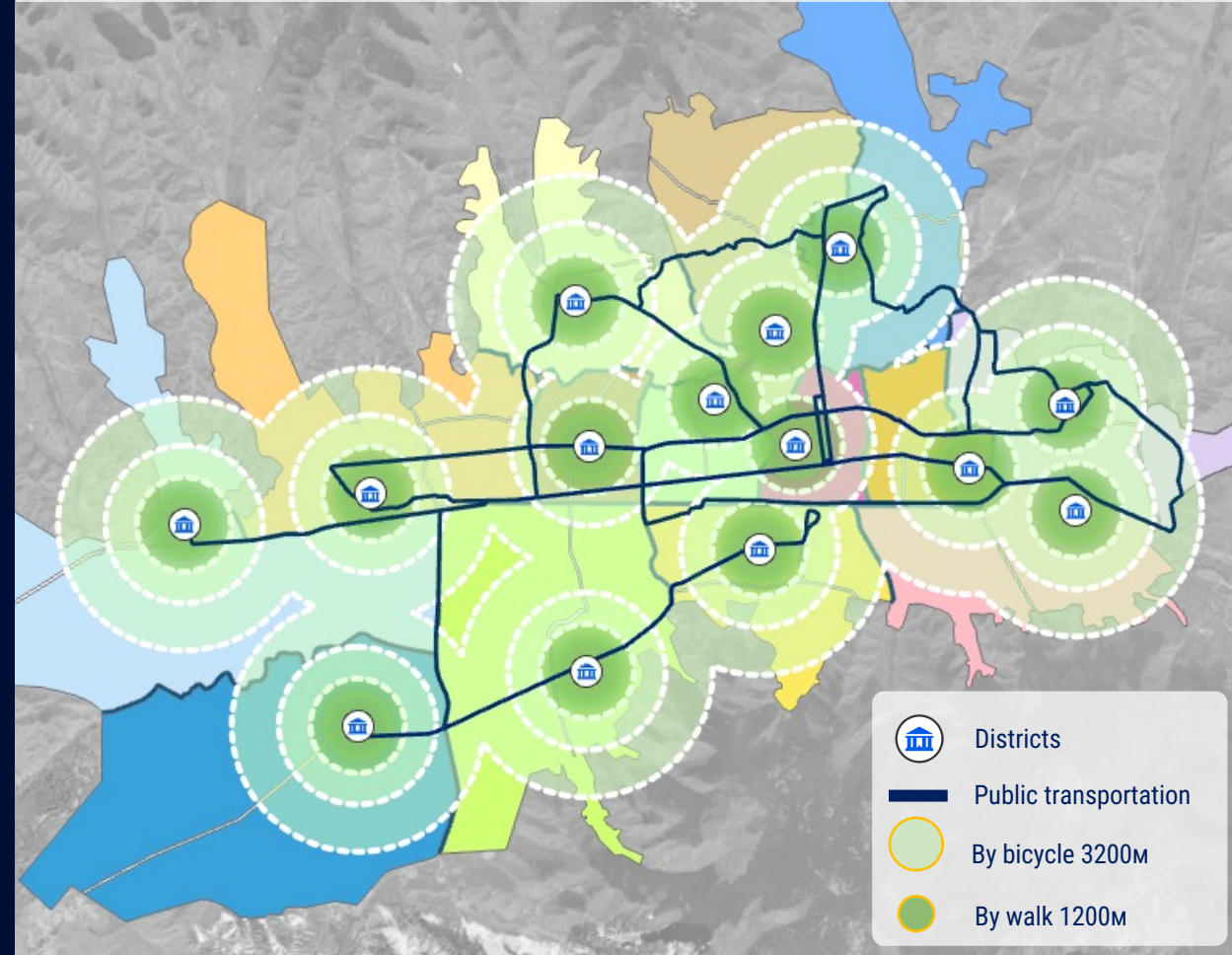
Six essential requisites for the city include housing, conducive working conditions, access to food, a favorable environment, educational opportunities, and leisure facilities.

»» EQUAL ACCESS SOLUTIONS

Pedestrian and cycle path links

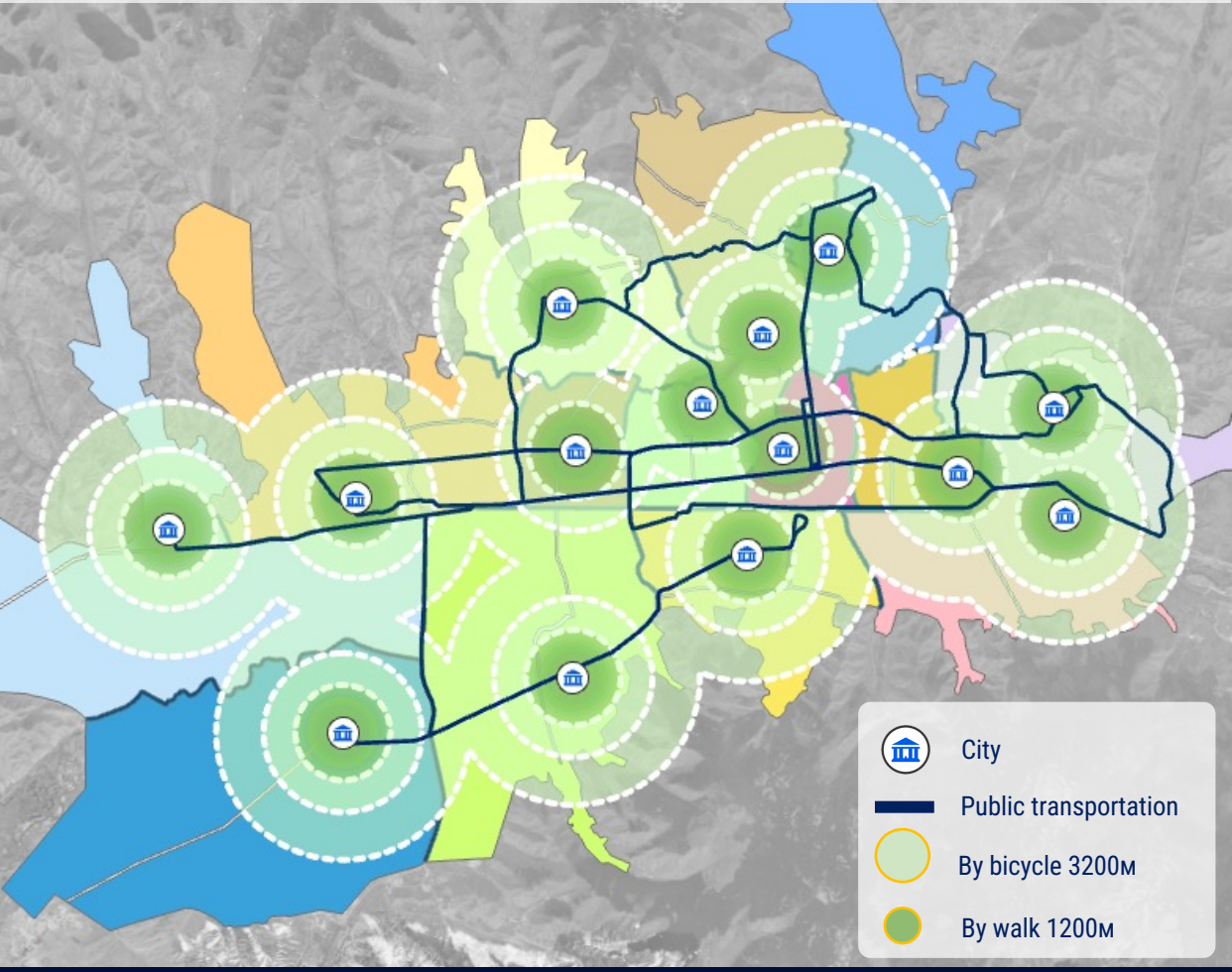


Public transportation

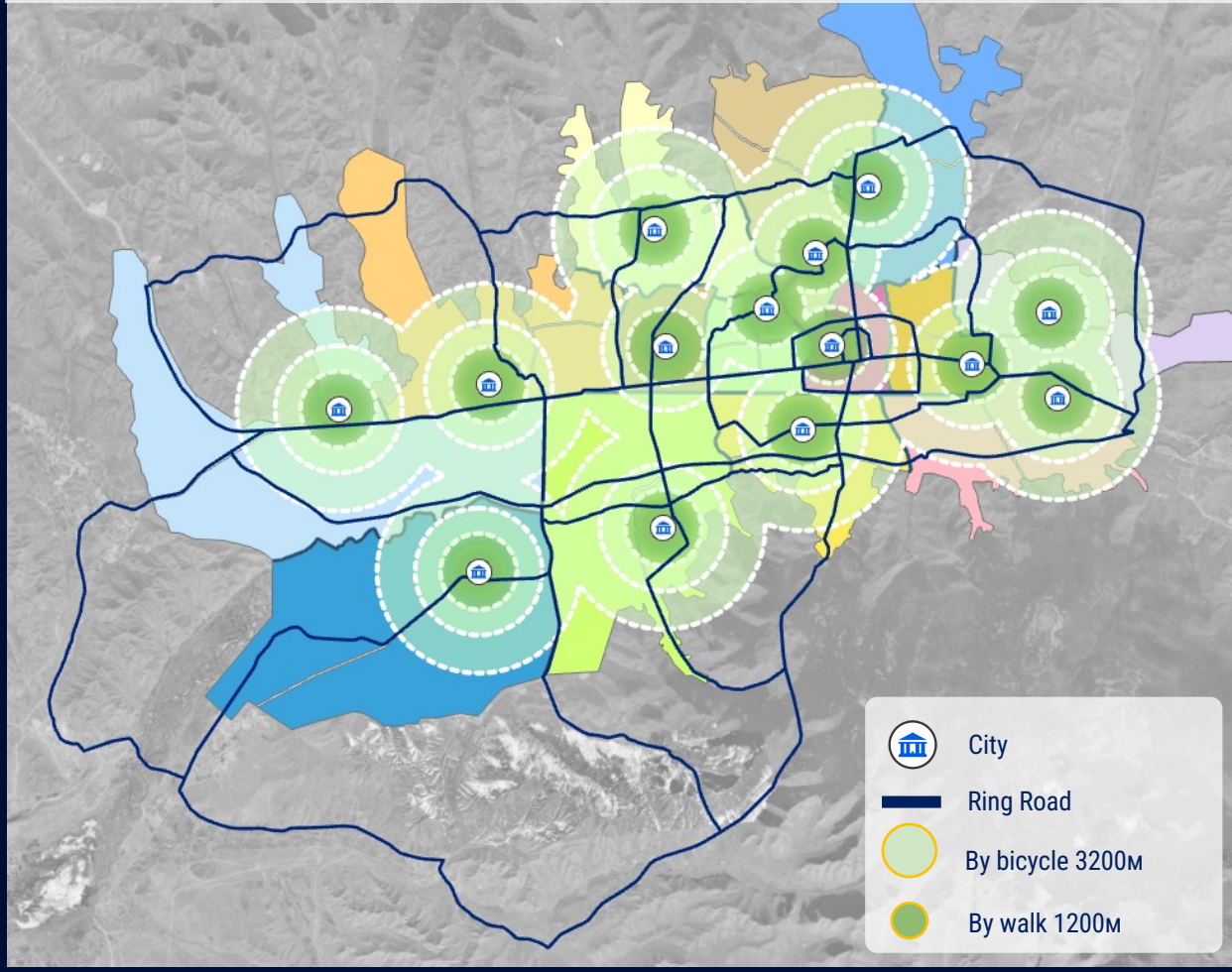


»» EQUAL ACCESS SOLUTIONS

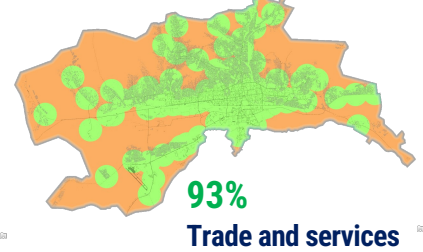
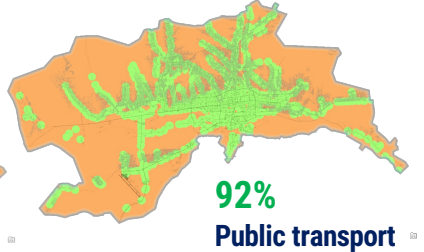
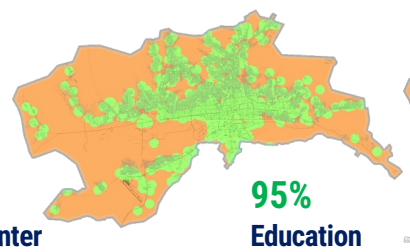
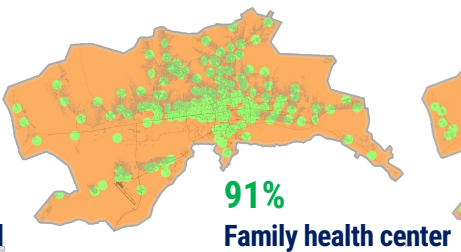
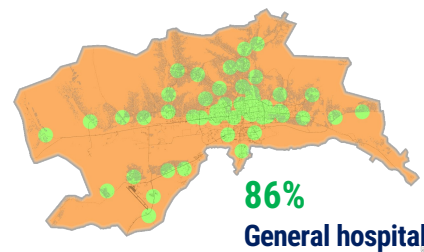
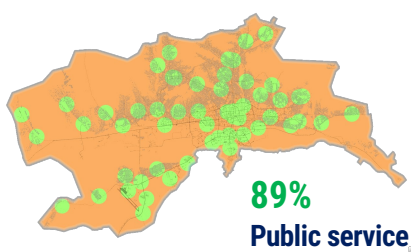
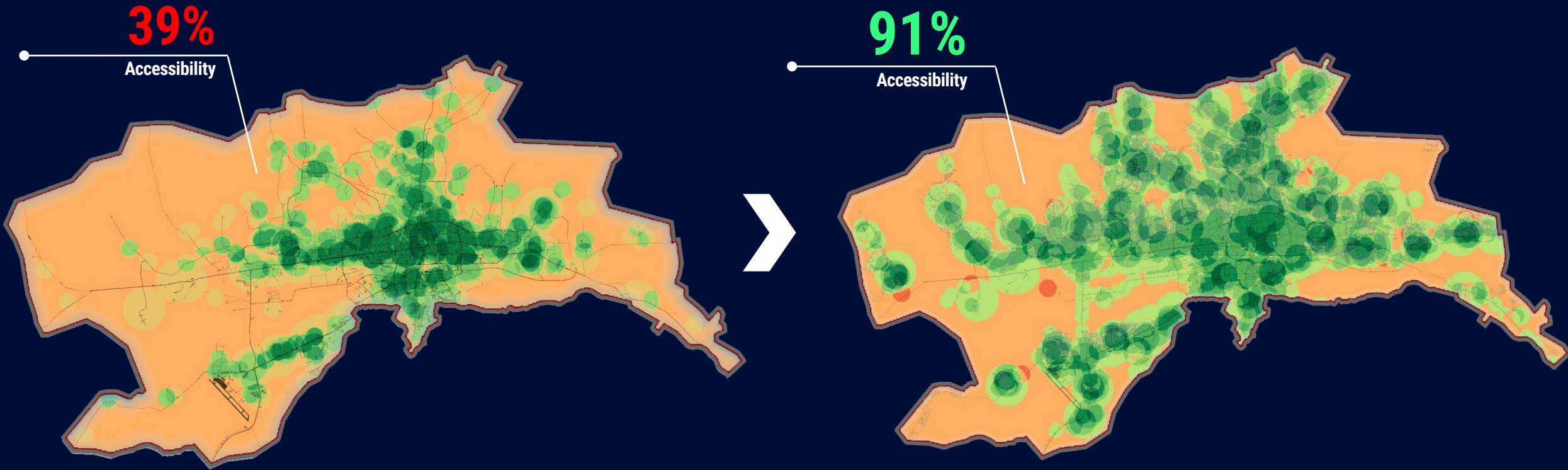
Public transportation



Ring road



▶▶ EQUAL ACCESS



Number of the population (Limited accessibility)

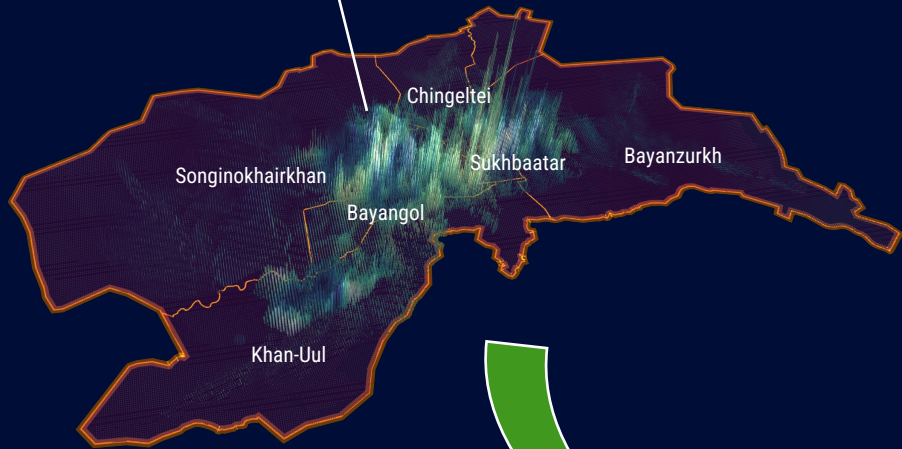
Number of the population (Full accessibility)

Source: Prepared according to City Standards and Standards of the Inspection Department

»» EQUAL ACCESS

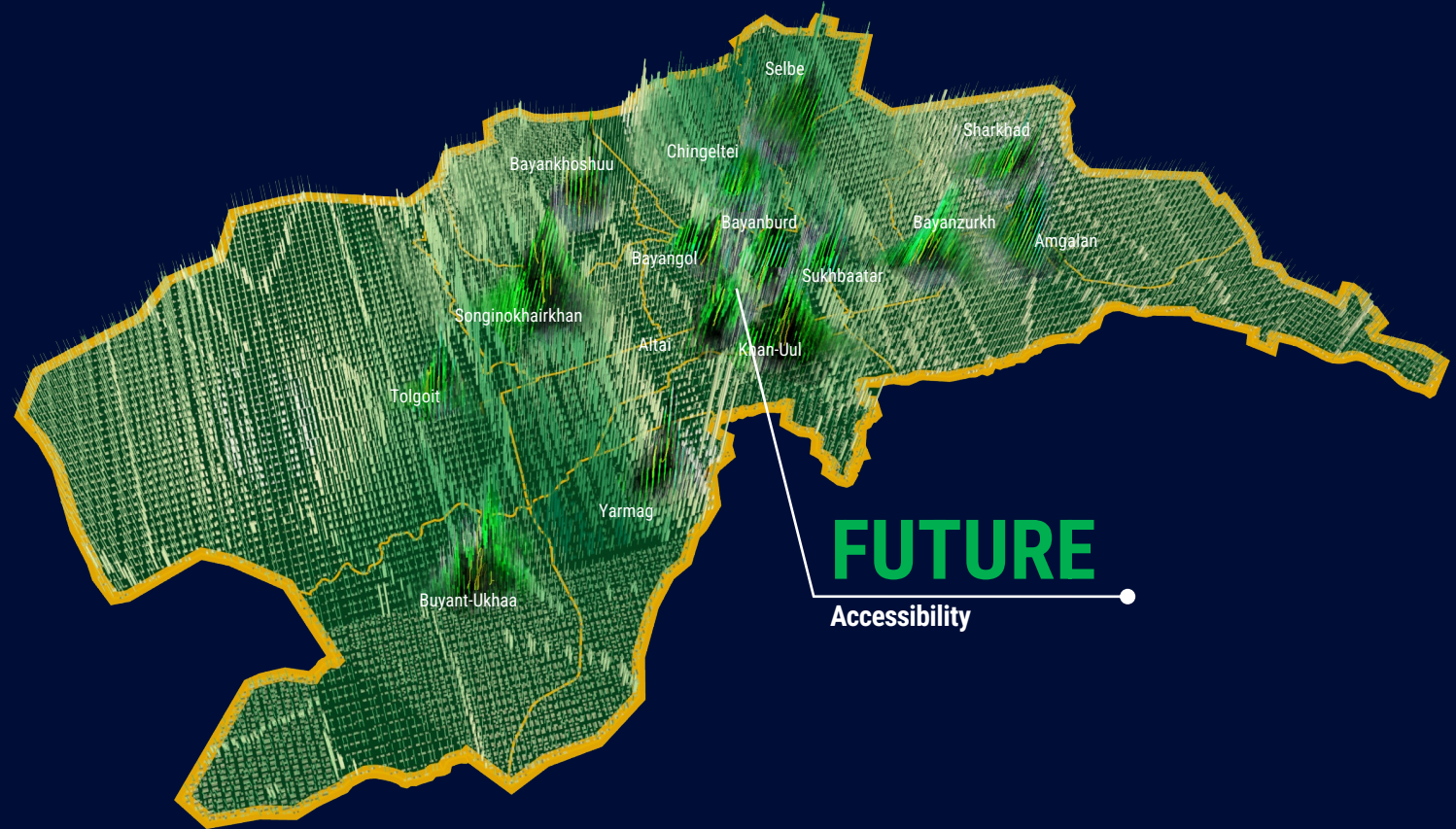
Now

Accessibility



FUTURE

Accessibility





**CENTRE FOR POLICY
RESEARCH AND ANALYSIS**

**THANK YOU FOR
YOUR ATTENTION**

Contact

Phone: +976 – 11-320621

E-mail: info@cpra.ub.gov.mn

Website: www.thinktankub.mn/mn

Address

Centre for Policy Research and Analysis

13th floor, Government Building II, Khangarid palace, Sukhbaatar square, Jigjidjav street-9, Baga Toiruu, Mongolia, 15160