



[**CLICK TO KNOW MORE**](#)

Navigating the complex waters of data integration in the blue economy

Honest insights from the Danish public administration

Dr. Christian Thellufsen, Senior Consultant

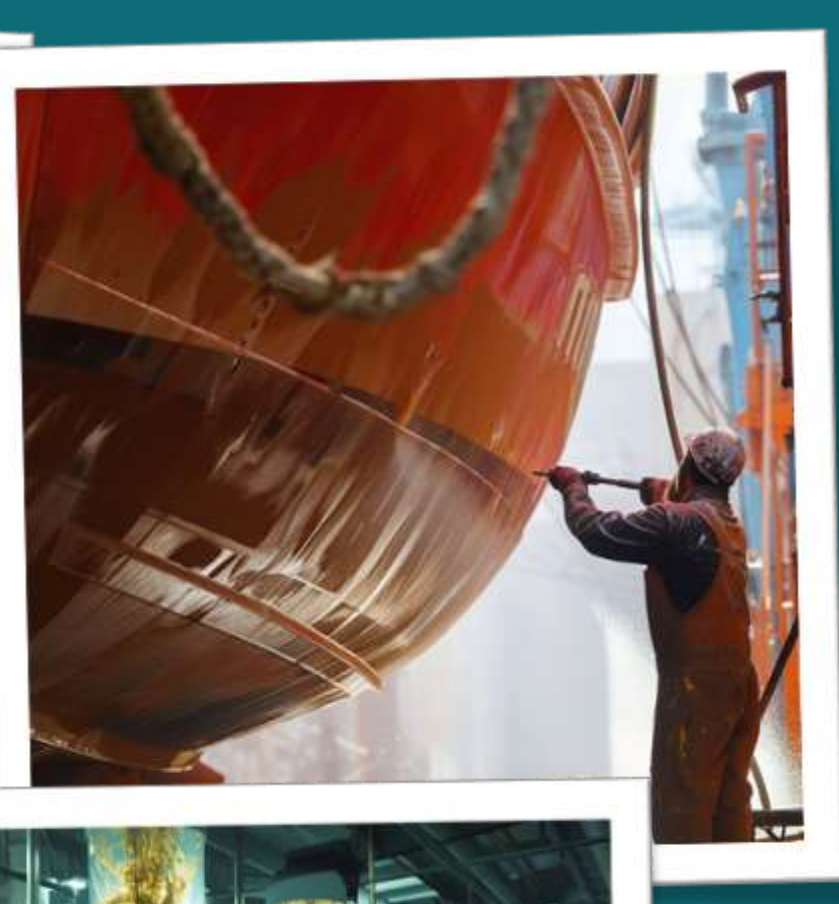
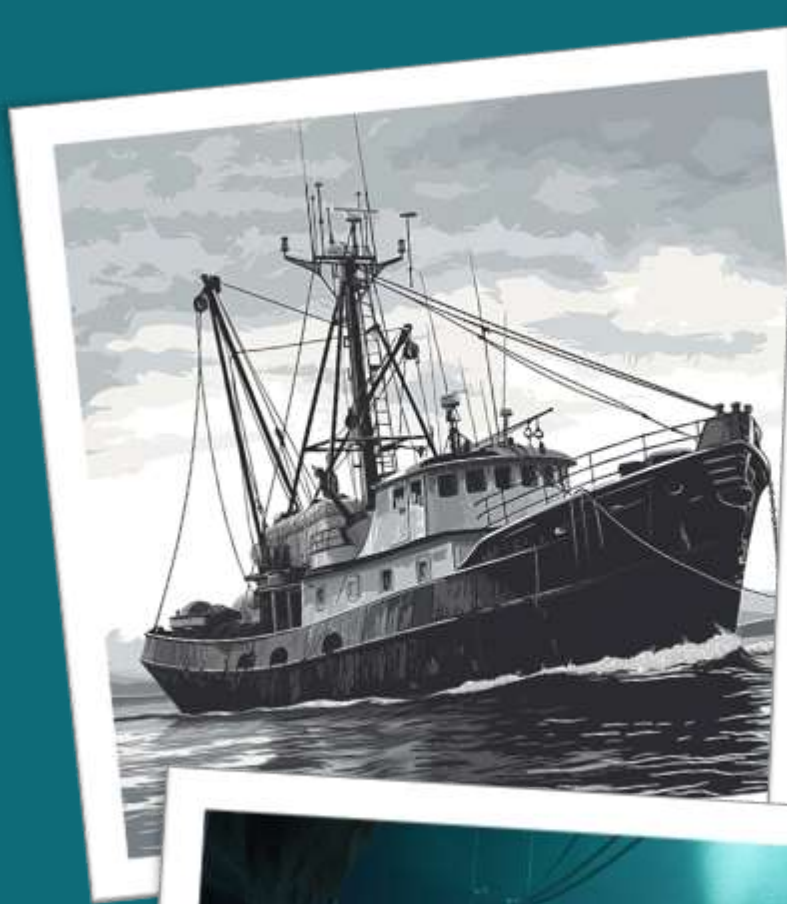


Danish Geodata Agency

















FINDABLE

Data has rich metadata and unique identifier



ACCESSIBLE

Data can be easily downloaded or used by using standard protocols



INTEROPERABLE

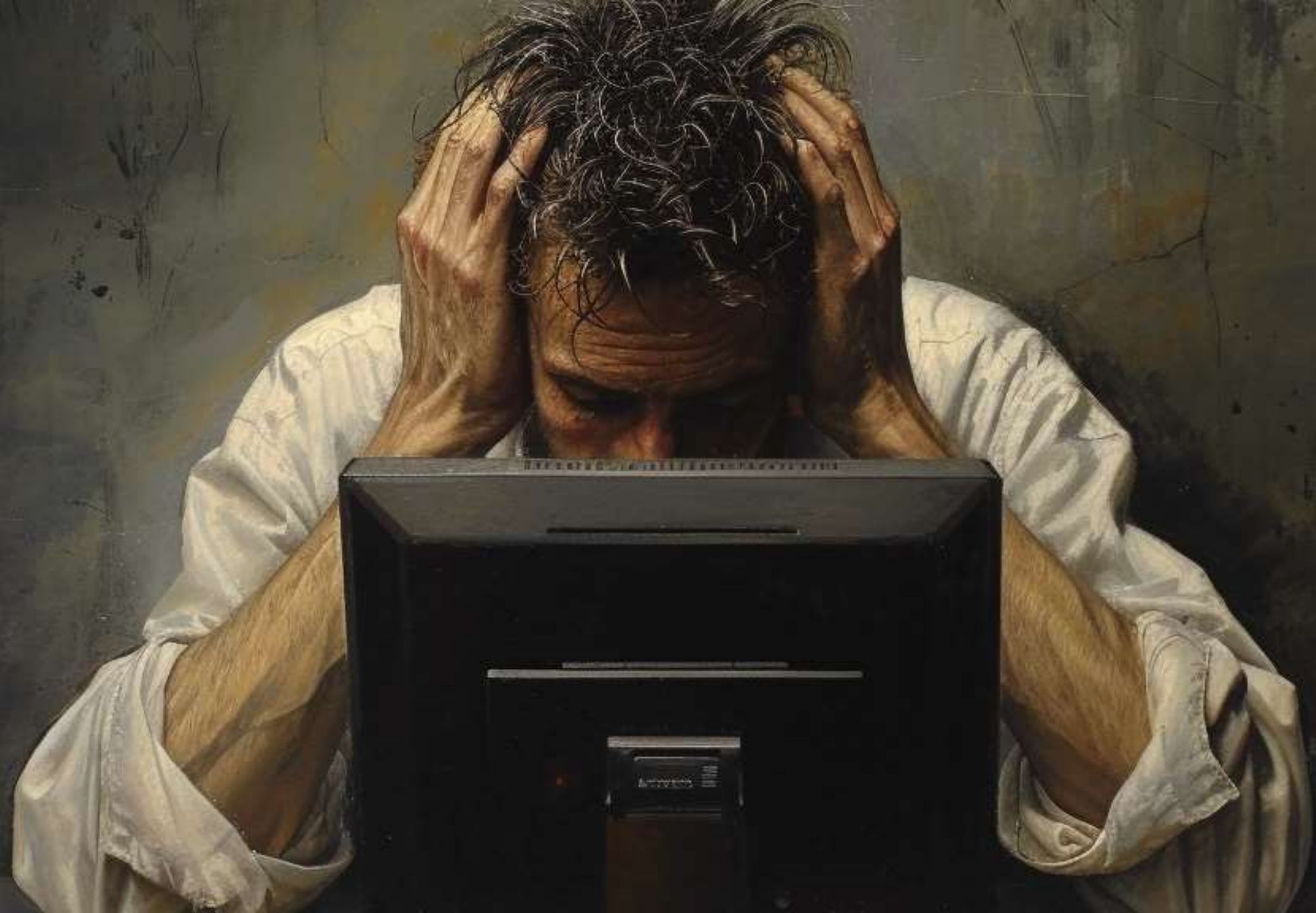
Metadata use an accessible and standard language



REUSABLE

Data is well-described and provides clear usage of licences







A photograph of a wind farm with several white wind turbines in a row, receding into the distance under a clear blue sky. The image is partially obscured by a teal overlay on the right side.

The Ambition of 10,000 Wind Turbines















The Ambition of 10,000 Wind Turbines

- **Data collection lacks standardized guidelines and depends heavily on the developer's consultant**
- **Initiating a project requires contacting data owners to gather necessary yet potentially random data.**
- **There is no legal requirement for developers to manage or disclose data, and authorities lack the capacity to handle data**
- **Developers are interested only in conclusions and reports required by authorities, not the data itself.**

Solidarity in Data Sharing? The Danish MSDI challenge

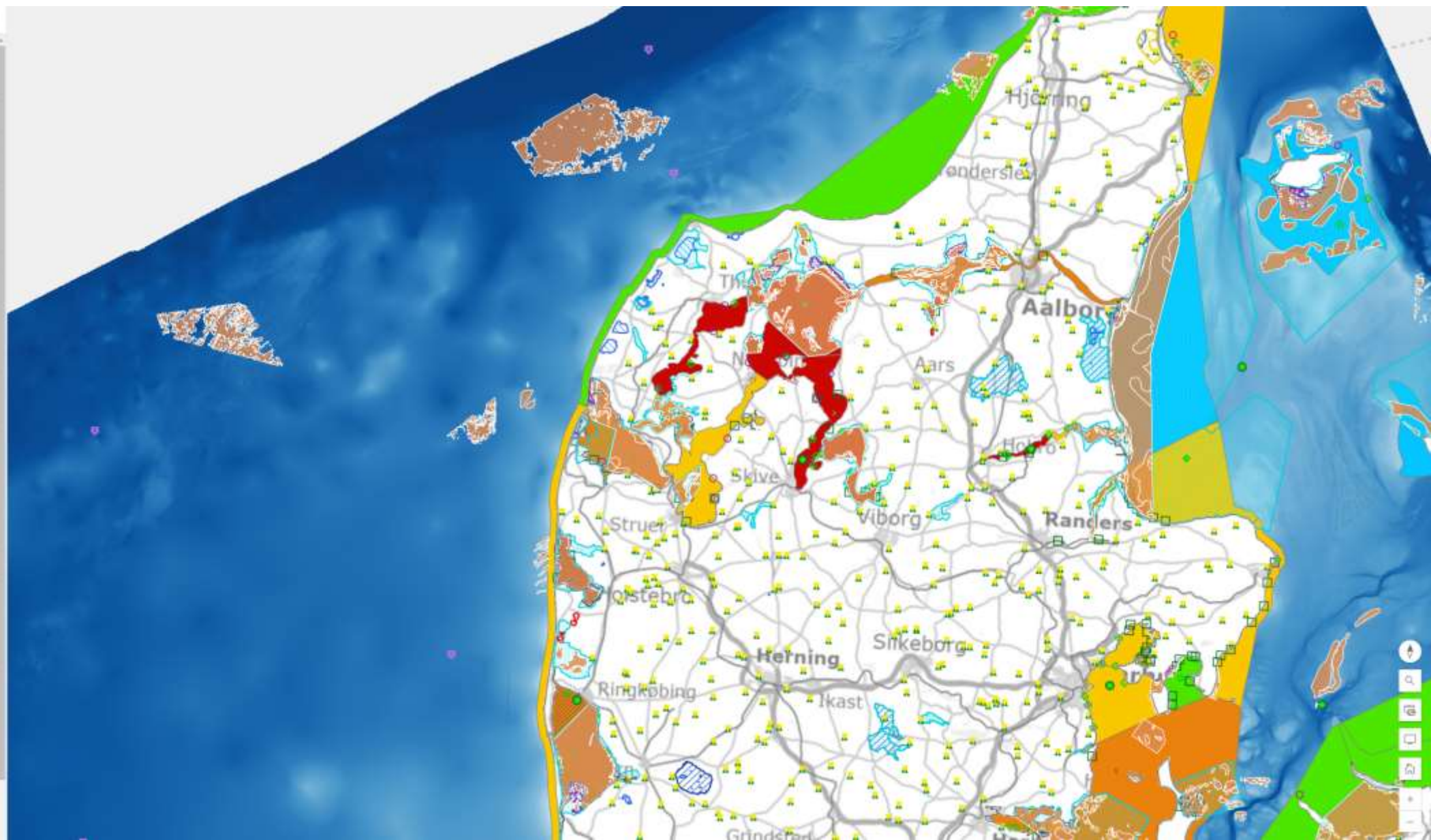


Lag

Søg i lag

- > Kyst
- > Havplan
- > Anlæg på havet
- > Naturbeskyttelse og fredning
- ▼ Energi
 - > Olie/Gas
 - > Havvind
- > Færø, foruds og restriktionsområder
- ▼ Fiskeri
 - > Ikke Bundsløbende
 - > Bundsløbende
- > Flora, fauna og naturtyper
- ▼ Friudstik
 - ▼ Kapsejledningspladser
 - || Kapsejledningsbaner
- > Infrastruktur
- > Kemi og miljø
- ▼ Planloven
 - ▼ Plandata
 - || theme_pdk_zonekort_v
 - || theme_pdk_anvendelsevandsokyst_vedtaget_v
- ▼ Råstoffer
 - > Råstoffer GELIS
 - > Råstoffer MST
- > Adm. Grænser

Tilføj











Solidarity in Data Sharing? The Danish MSDI challenge

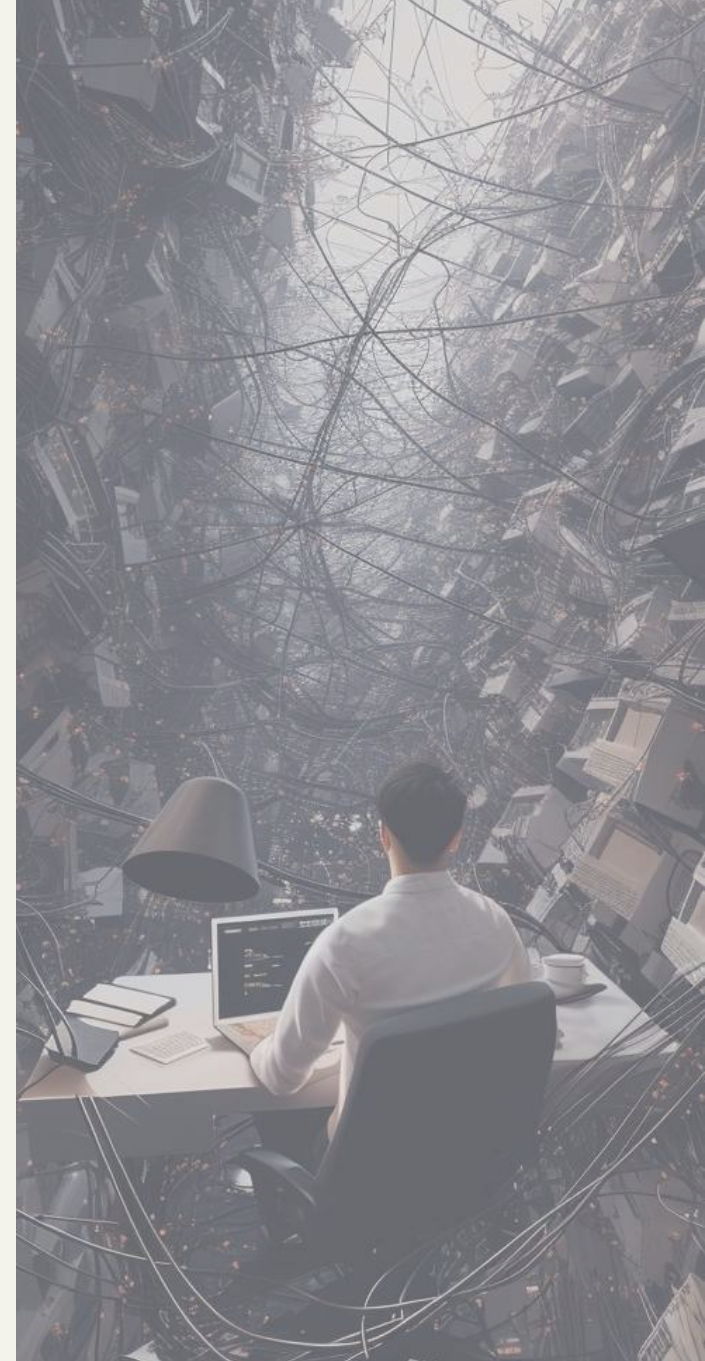
- The Marine Spatial Data Infrastructure (MSDI) started up as a success
- Struggling with funding and withdrawal of key members
- The paradox of acknowledging potential while withdrawing financial support



Five trends in data integration challenges from a public viewpoint

1) Technological and Data Complexity

Different technology platforms, scattered data sources, and varying data quality among public and private groups make it hard to connect, combine, and trust data across organizations.



2) Legislative and Regulatory Gaps

The lack of clear laws and rules for collecting, sharing, and using data causes uncertainty and makes it hard to effectively combine and use different data sources.



3) Funding and Resource Allocation

Tight budgets and difficulties in distributing money and staff resources make it hard to grow and maintain data integration projects.



4) Lack of Data Sharing Incentives

Without clear rewards or rules for sharing data between public agencies and private companies, important data often goes unused.



5) National Security

Security risks and concerns about national security, means marine data cannot be widely shared and we need to be careful and use advanced technology to protect the information.



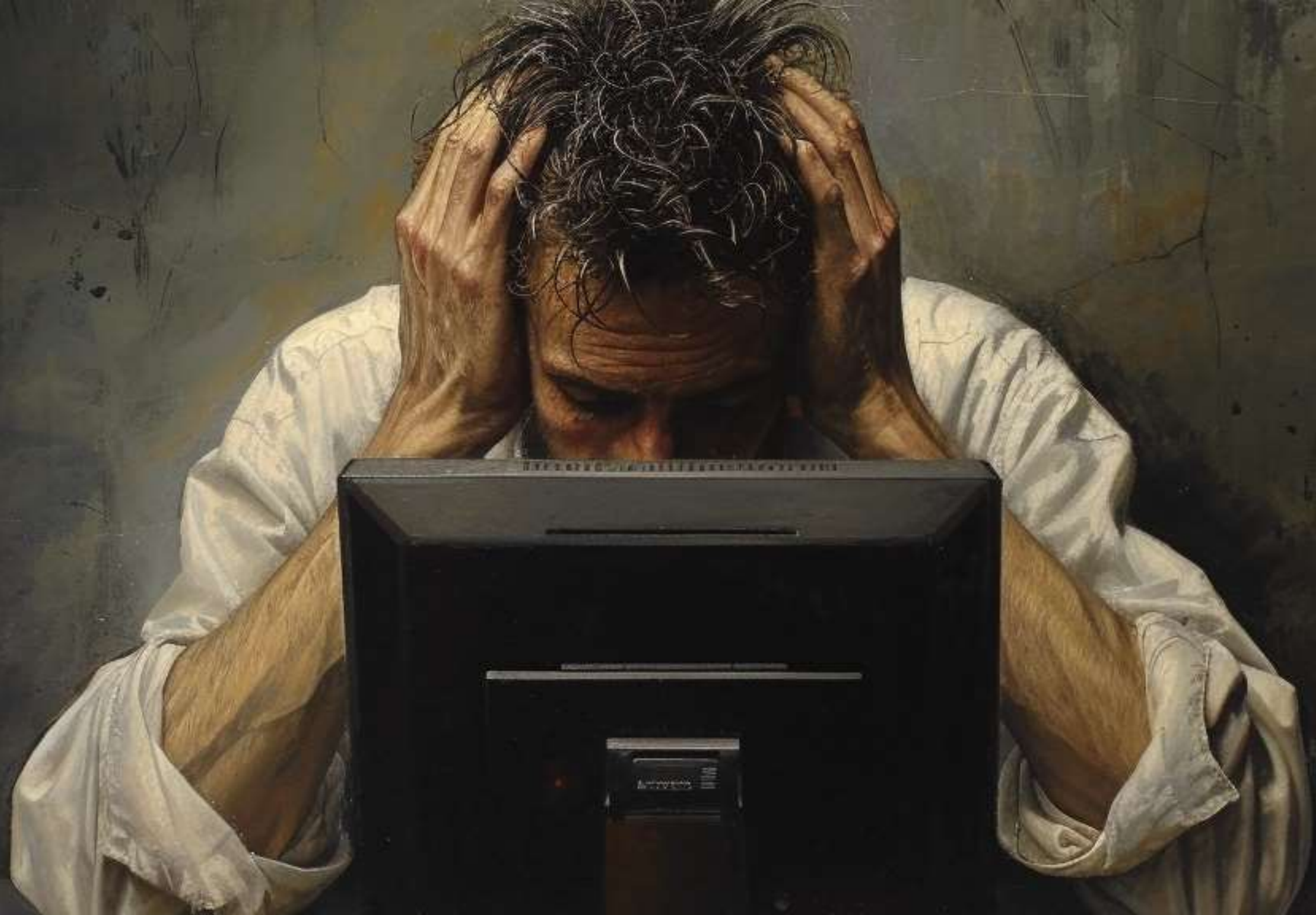


A wrap up

- Technological and Data Complexity
- Legislative and Regulatory Gaps
- Funding and Resource Allocation
- Lack of Data Sharing Incentives
- National Security











Thank you

(and please catch up – I am not grumpy all the time...)