



GWFF

GEOSPATIAL WORLD FORUM

[**CLICK TO KNOW MORE**](#)



Copernicus

Data Space Ecosystem



Copernicus must strive for digital excellence. We want Copernicus data to be easily accessible and usable. At the same time, we need a powerful data analytics environment to attract new users, in particular from non-space sectors.

Thierry Breton, Commissioner for Internal Market

Largest data space for the largest EO programme

- The **authoritative source** for full and up-to-date archives of Sentinel user data, digitally traced for a permanent record of authenticity
- **Immediately available, free and open data**
 - Currently 76 PB and more than 100 PB by 2028
- Governed by a Service Level Agreement, ensuring continuity and trust (up to **December 2028** with optional extension until **December 2032**)
- **Open ecosystem** of advanced services (e.g., API Access, Cloud processing, Code Repository, third-party data and services)



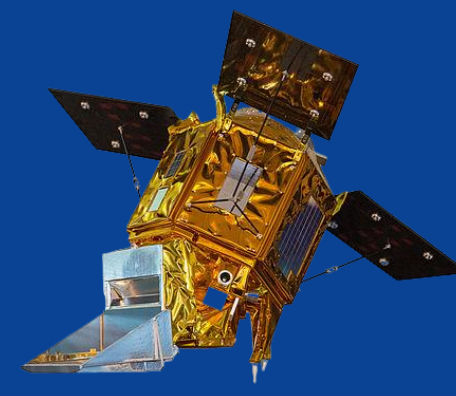
Public Data Portfolio Overview – all Sentinel data

All Copernicus Sentinels User Level Data

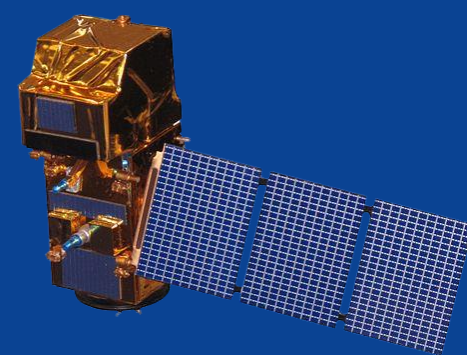
* Open & Free



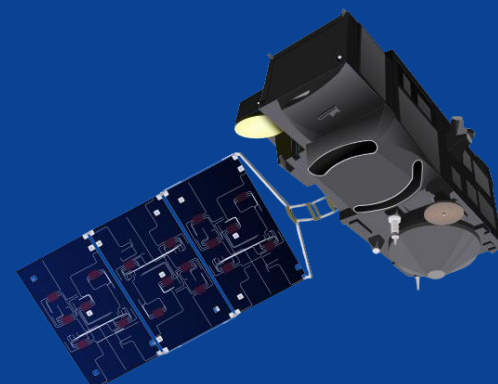
Sentinel-1



Sentinel-3 Land



Sentinel-2



Sentinel-5P



Copernicus Sentinels Auxiliary data

* Open & Free

Copernicus Core DataSets

Copernicus Digital Elevation Models

Contributing Missions Core Datasets

* Licence & access restrictions may apply

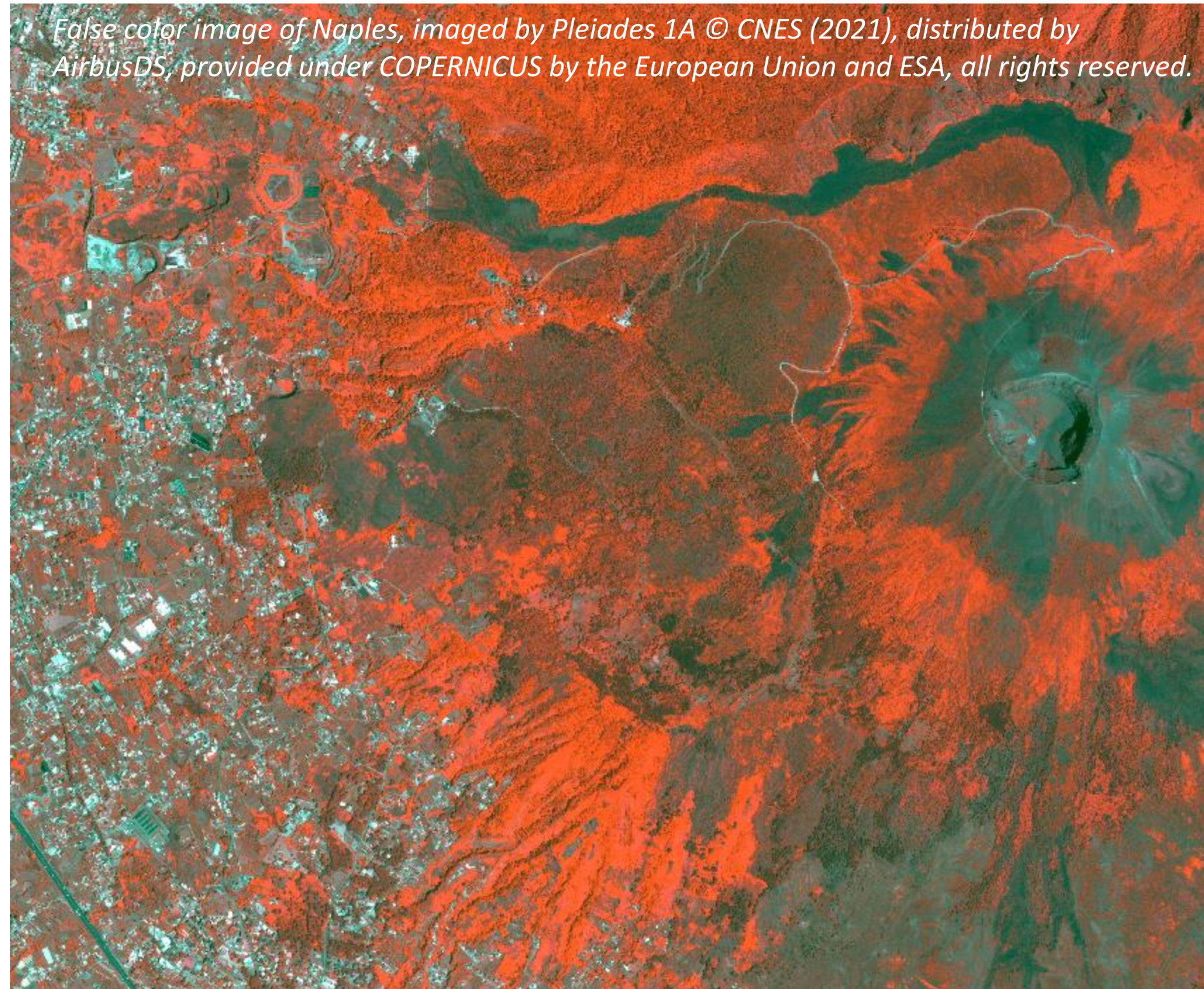
Copernicus Sentinels “Expert” Data

* Access restrictions may apply

+ Complementary 3rd party data with 3rd party access conditions

* Licence & access restrictions and conditions may be applied by 3rd parties

Copernicus Contributing Missions (CCM-s)



- CCMs supply additional data beyond the Sentinels to Copernicus to ensure that a whole range of observational requirements is satisfied.
 - **VHR Optical Data**
 - **SAR Data**
 - **DEM Data**
- The main users of CCM data are the Copernicus services, which address several key thematic areas for the benefit of European citizens.
- Other Copernicus users are also able to access certain CCM collections, depending on their eligibility. [Discover/View/Download]

[Home](#)

Create a personal account

Complete the form below to create a new account. After submission you will receive a verification mail to confirm your subscription and login to your personal account.

Register form

* Required fields

First name *

Last name *

Email *

Password *

Confirm password *

Country *

Type of user (you are/your organisation is ?) *

Thematic activity

Purpose of use

Accept [terms and conditions](#) and [privacy policy](#)

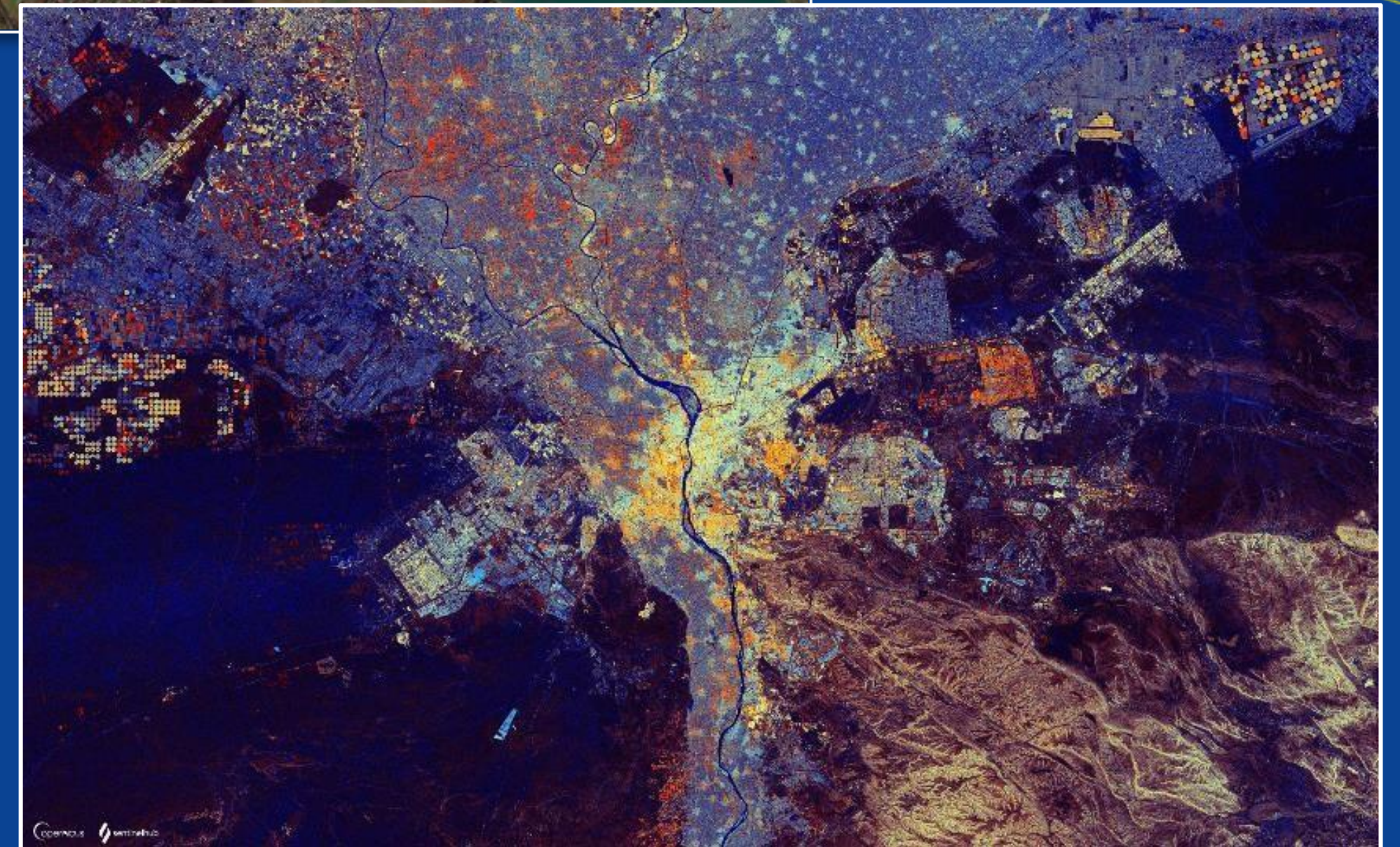
Join our mailing list to be informed about future news

Give the permission to contact you at the email address provided during the registration for the purpose of possible user surveys

I am also interested in accessing Copernicus Contributing Missions data
The approval of your registration request depends on adherence to the [ESA-User license for the use of CCM data](#) Registration under the Public user category is automatically approved.

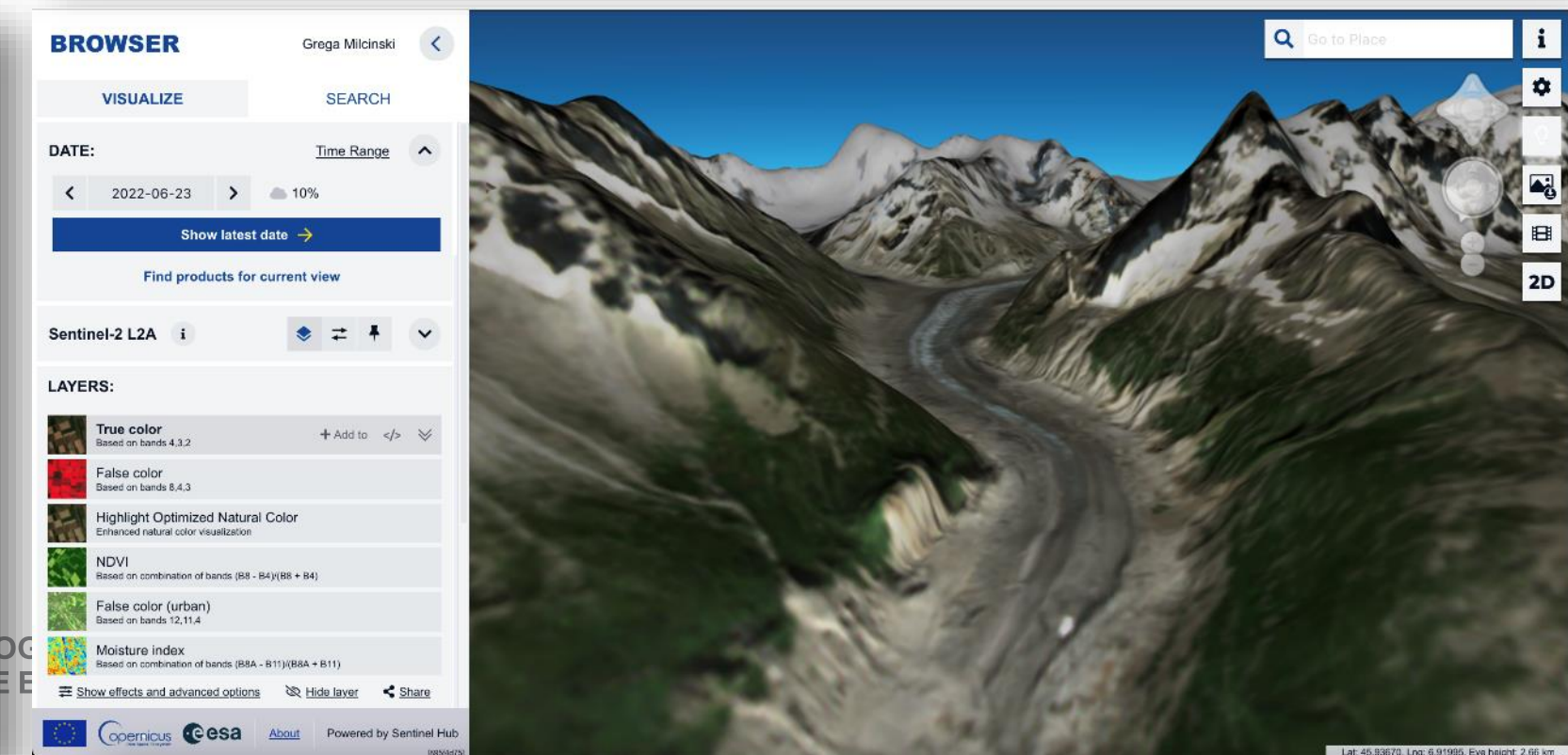
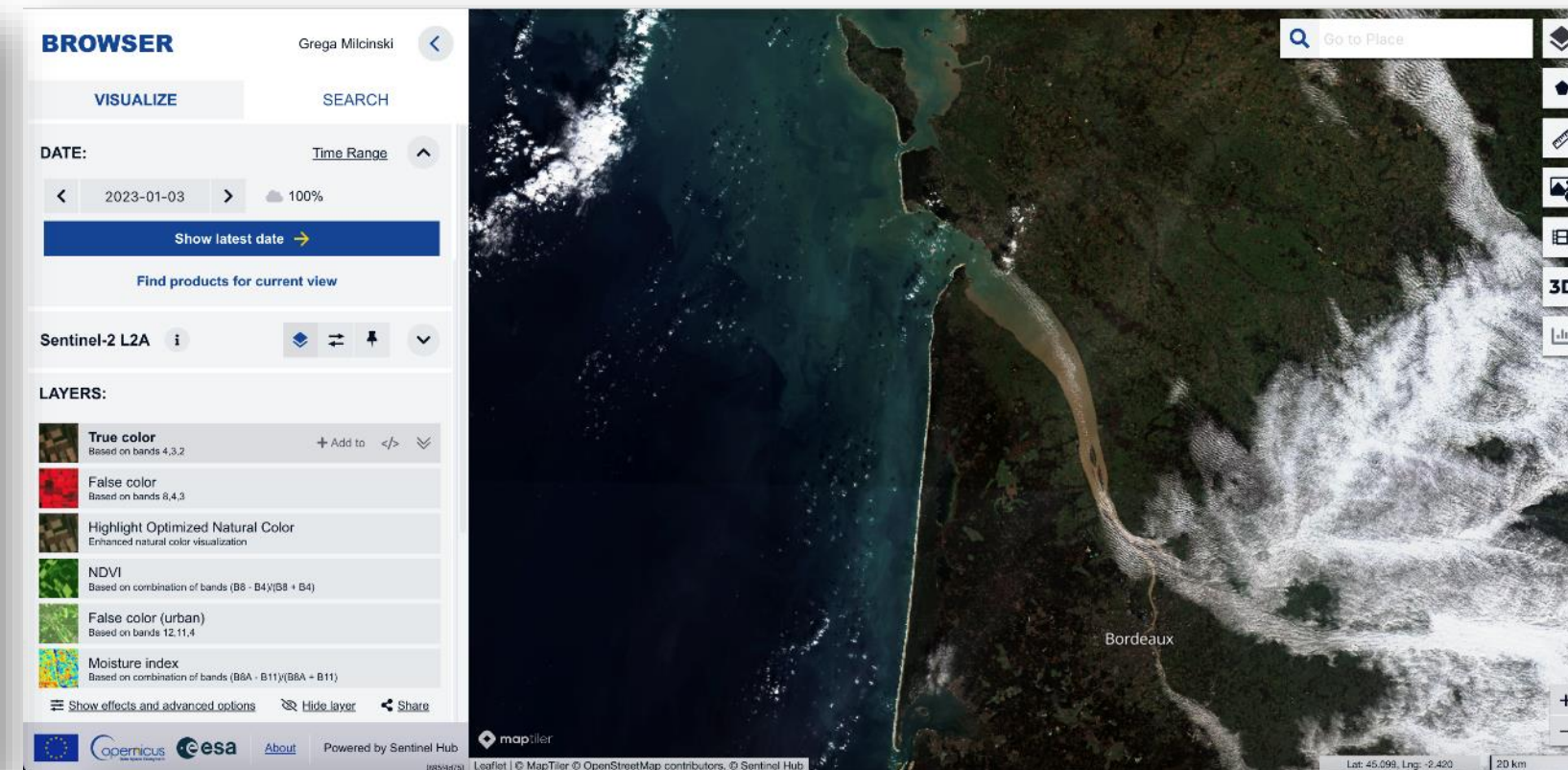
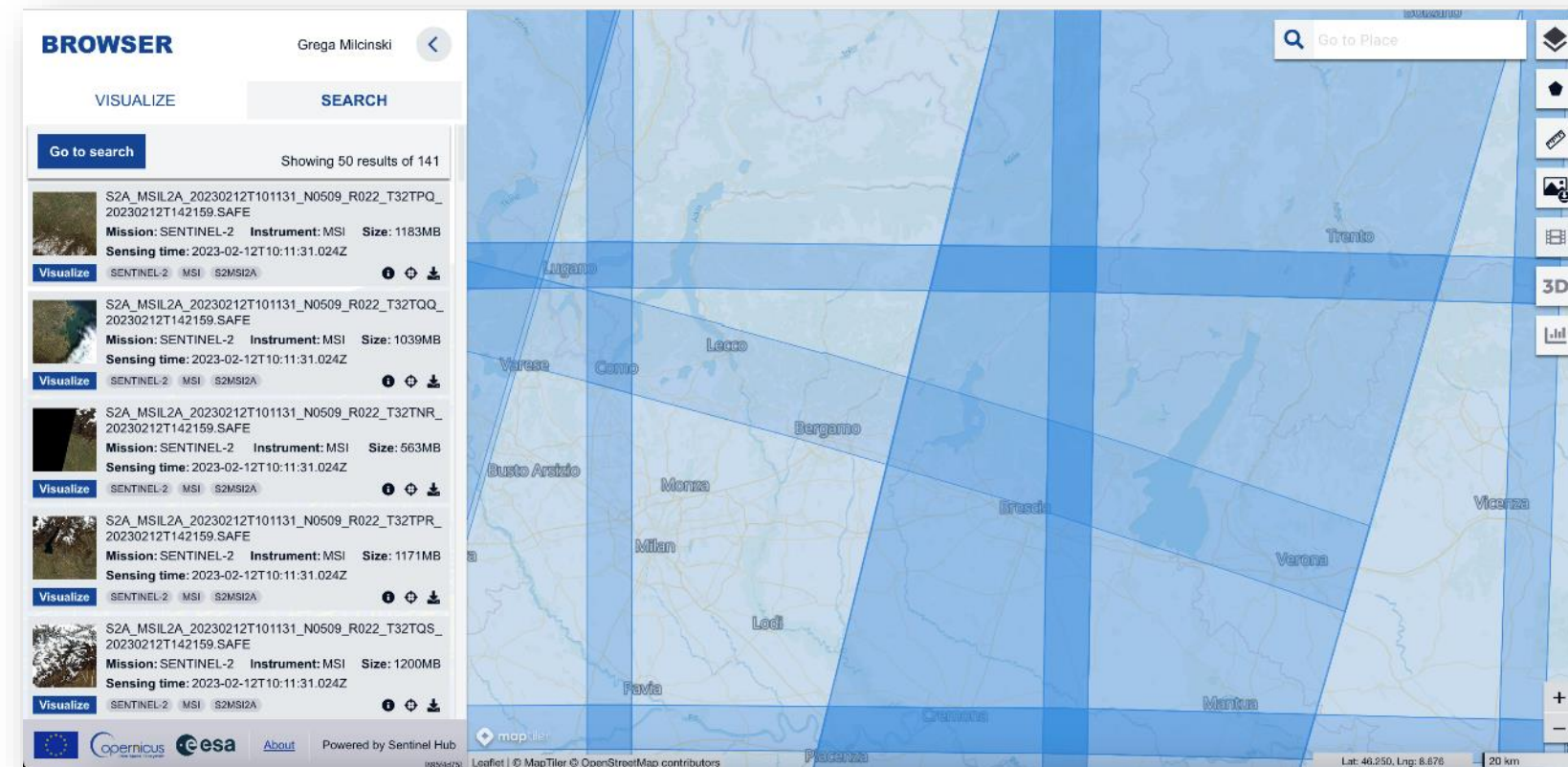
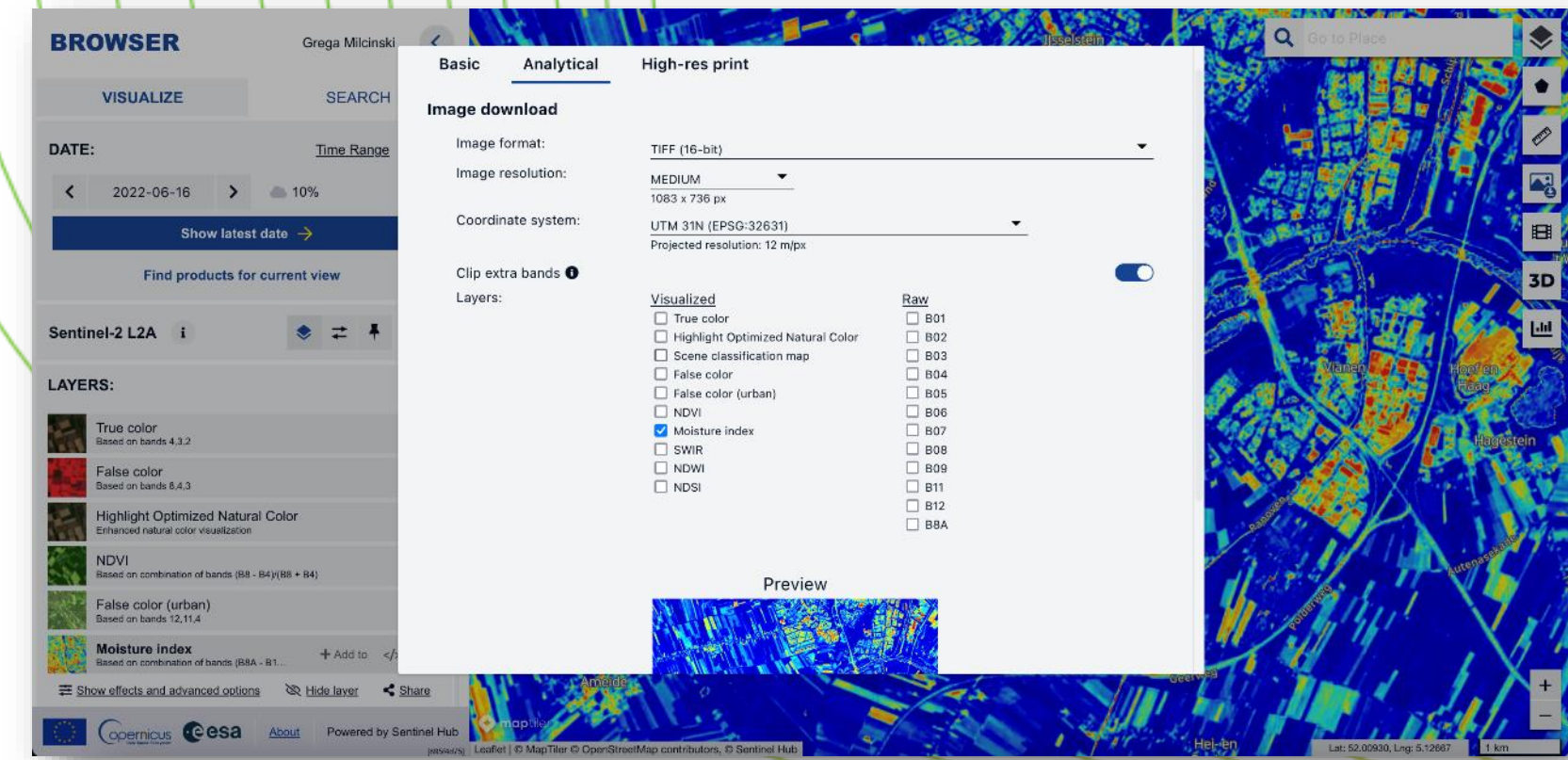
More information can be found at [Copernicus Contributing Missions Online](#)

I'm not a robot



Copernicus Browser

- Search, query and download all User Level Products
- Interactive visualisation and analysis of most important data collections
- Export subset of the data (also in print quality)
- Comparison, time-lapses, area analysis and more
- 3D exploration and visualisation



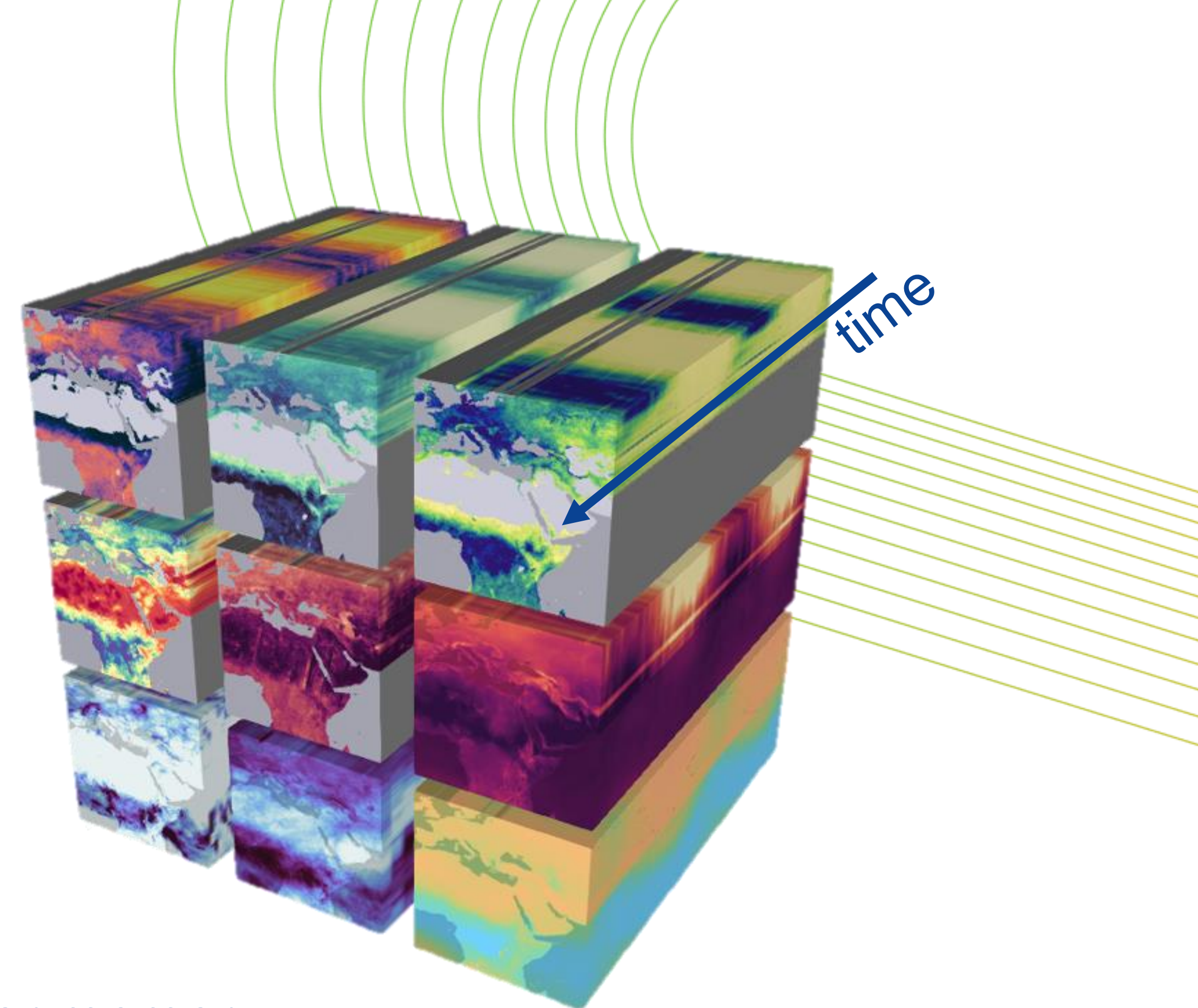
openEO Data Processing

Datacubes

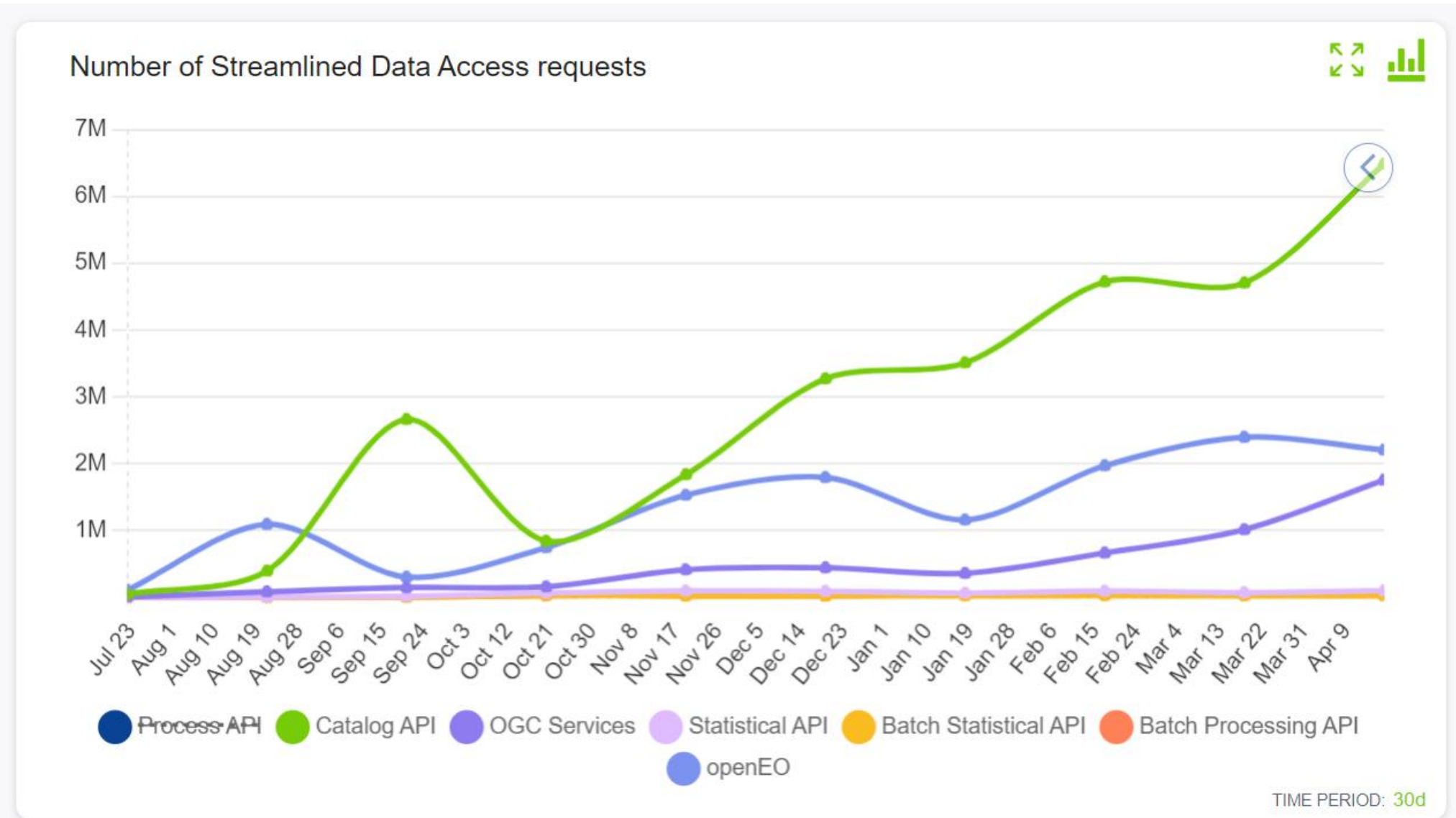
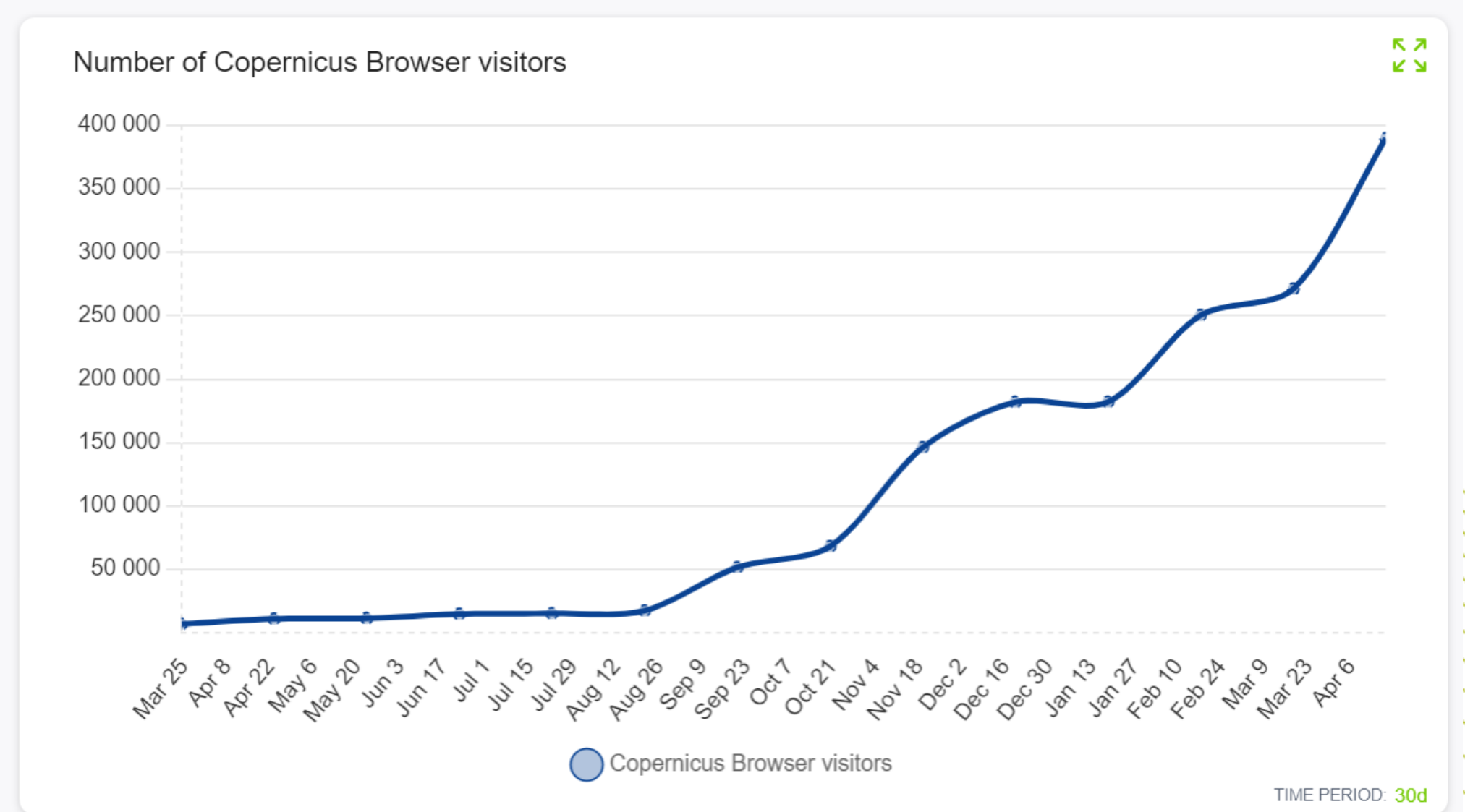
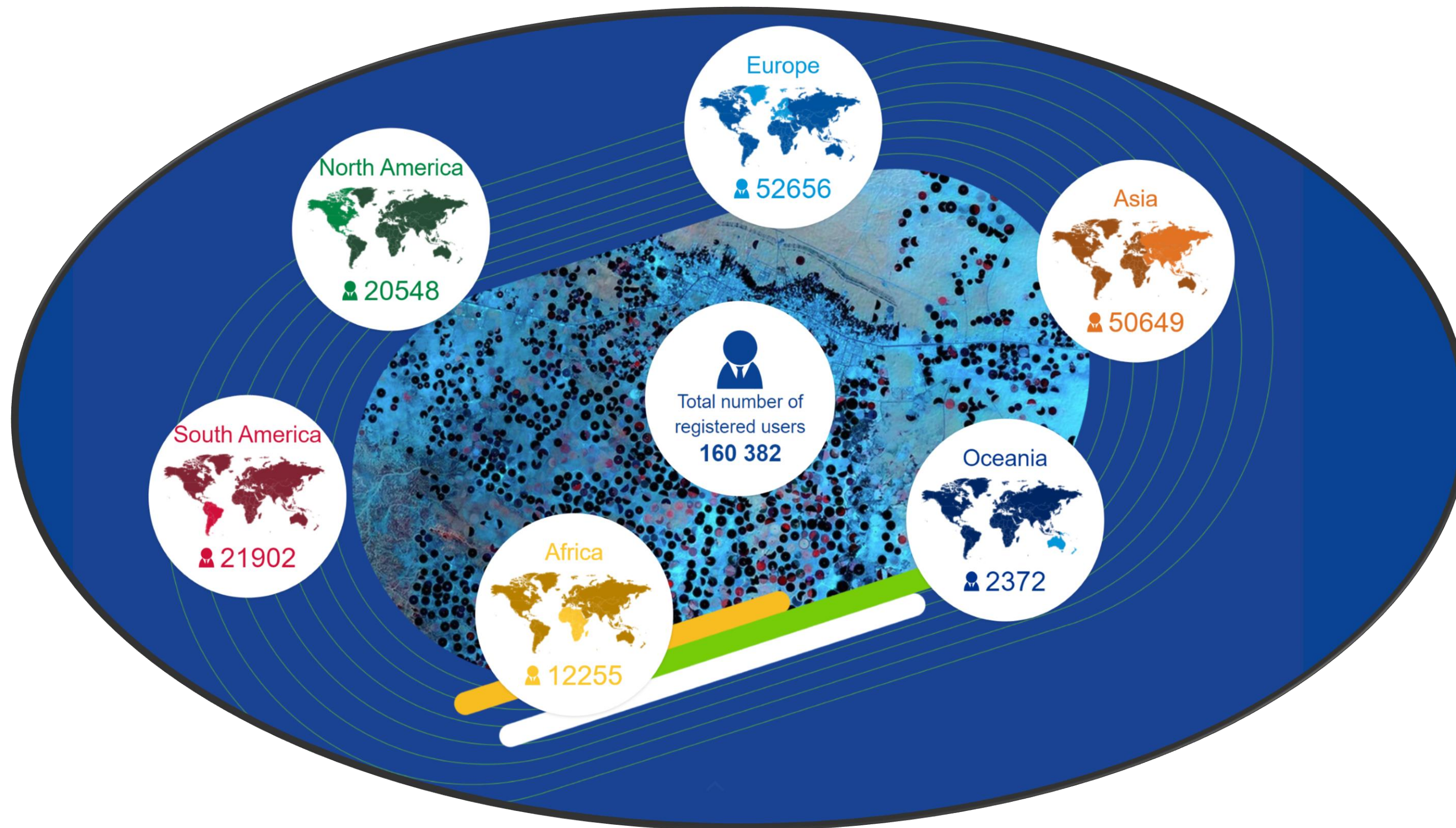
- multi-dimensional data structure
- Processes designed for efficient analysis

Why Datacubes?

- Users do not deal with files, formats, data loading or memory management
- User need not plan for optimization workflow



Useage statistics are growing



The Service Team

The service team

The Copernicus Data Space Ecosystem is powered by leading European cloud and earth observation service providers. The combination of the partners' experience and the guidance of ESA ensures a comprehensive, high-quality and user-friendly ecosystem.

The service team consists of the following partners:

- T Systems
- CloudFerro
- SINERGISE
- vito Remote Sensing
- DLR
- ACRI-ST
- RHEA