



[**CLICK TO KNOW MORE**](#)

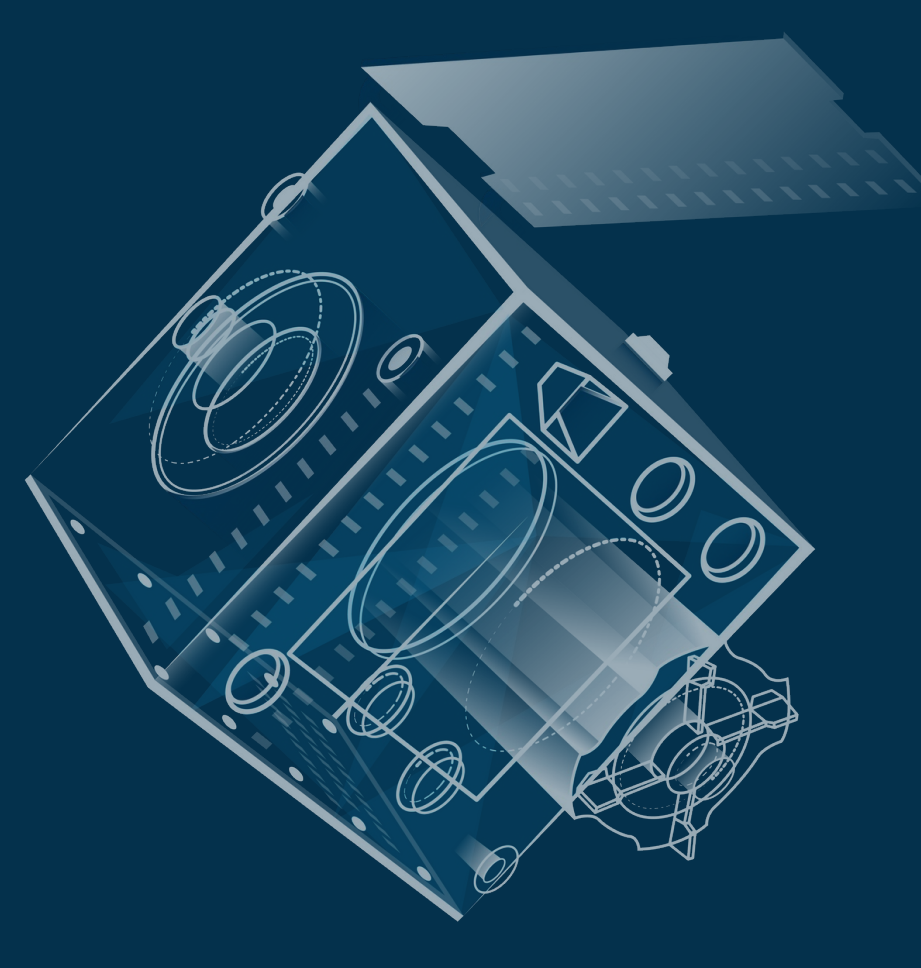


Harnessing the Power of Space- Based Imagery: Driving Innovation and Economic Growth

Dr. Siriluk Prukpitikul
Deputy Executive Director
GISTDA
Thailand

I. SPACE-BASED IMAGERY





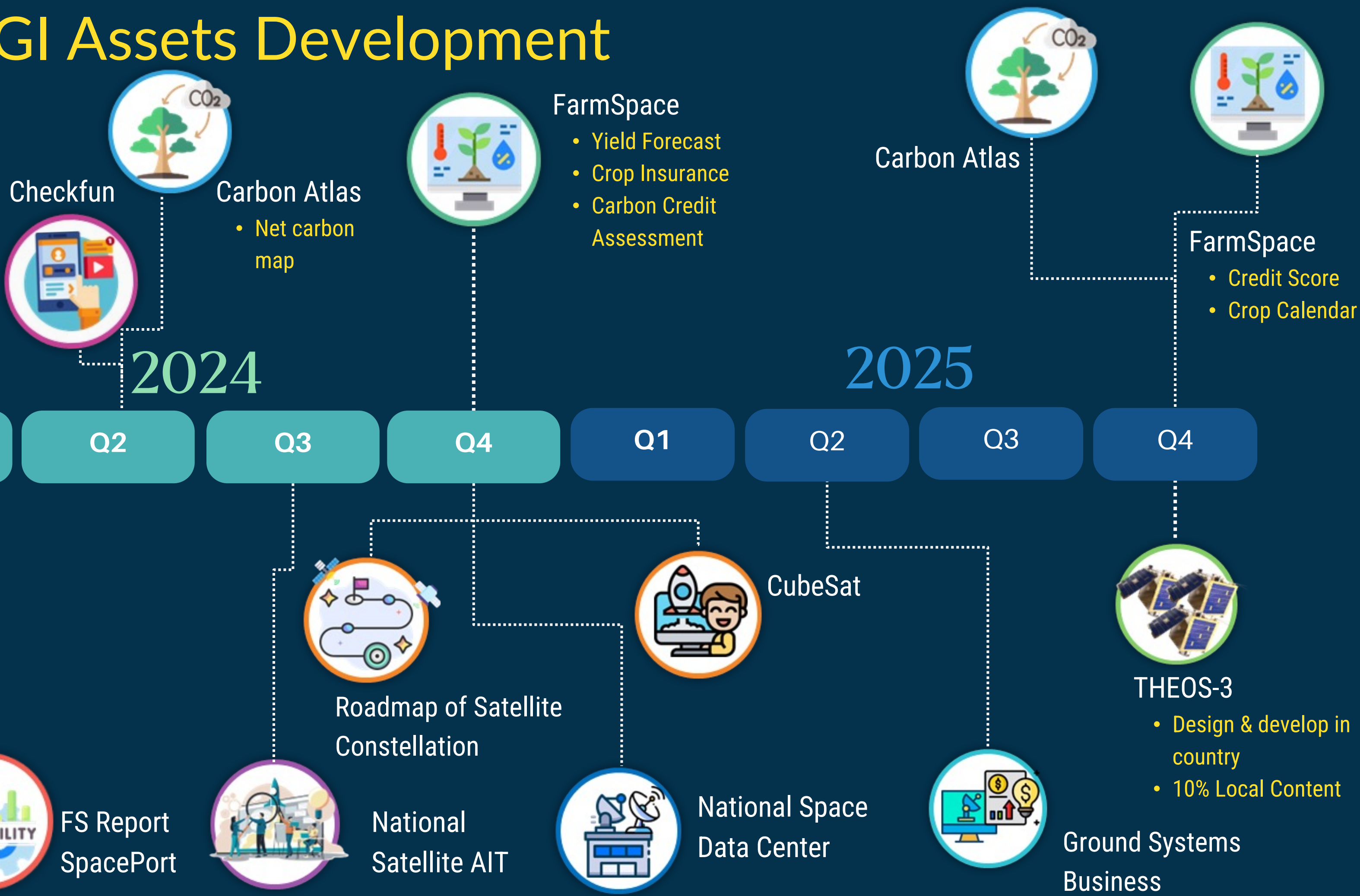
VISION

TO BE AN ORGANIZATION THAT
BRINGS TOGETHER THE VALUES OF
SPACE TECHNOLOGY
AND GEO-INFORMATICS FOR THE
GREATEST BENEFIT OF HUMANITY

Space & GI Assets Development

GI for All

Satellite Program





II. IMPORTANCE OF SPACE & GEOSPATIAL POLICY



The National Geo-
Informatics
Committee

The National **Geospatial**
Master Plan 2023-2027 (5 Years)

Submission to the **National Geo-
Informatics** Committee and then the
Cabinet for Consideration



Current Status
of

**Space & Geospatial
Policy**

in THAILAND



The National Space
Policy Committee

Development of the **National Space Law**

The National **Space**
Master Plan 2023-2037 (15 Years)

Submission to the **Cabinet** for
Consideration

The National Space Law

01

New Space
Economy

02

Space
Security

03

International
Standard
Operating
Procedure

04

One Stop
Service
Coordinator

05

Space
Education

06

Support
Space
Ecosystem

National Space Master Plan 2023-2037 (15 Years)



National Geospatial Master Plan 2023-2027 (5 Years)

Vision: Every sectors gain competitive advantage and Thai people have a good quality of life using geospatial technology

Objectives

01

Thai economy gains competitive advantage with geospatial technology

02

All sectors trust in national central geographic information systems

Strategies

01

Drive Thailand Economy with Geospatial Technology

03

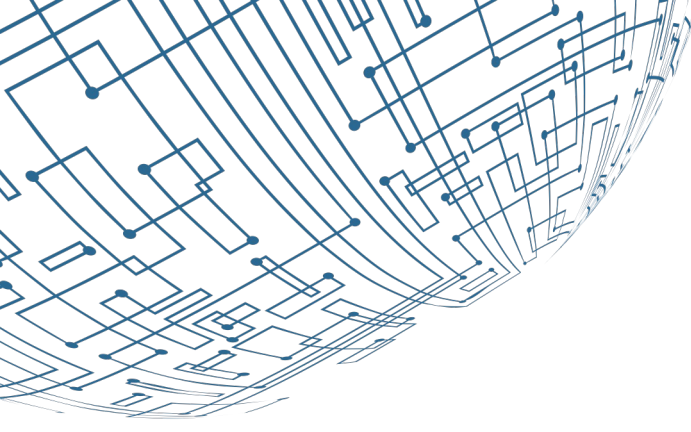
Develop geospatial open platforms and promote geospatial open data

02

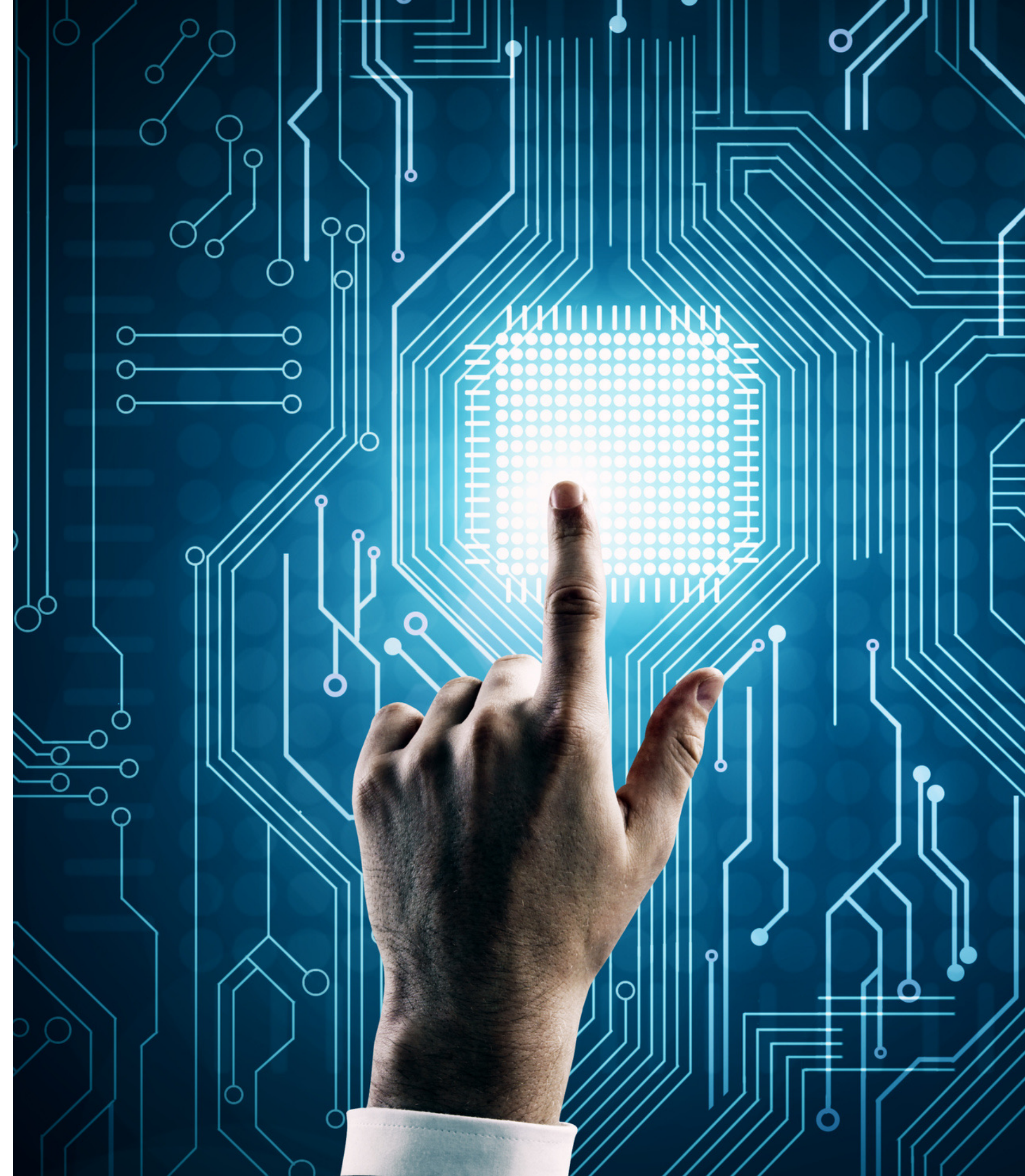
Develop the national geospatial data sets which are essential for various uses and mission especially for economic growth

04

Building HR capacity and a mechanism to drive geospatial innovation



III. INTEGRATION INTO THE NATIONAL AND REGIONAL DIGITAL INFRASTRUCTURE



EO Satellite Roadmap: National Constellation

THEOS-1

(Passive Payload)

2008



THEOS-2&2A

(Passive Payload)

2023



THEOS-3&4

(Active & Passive Payload)

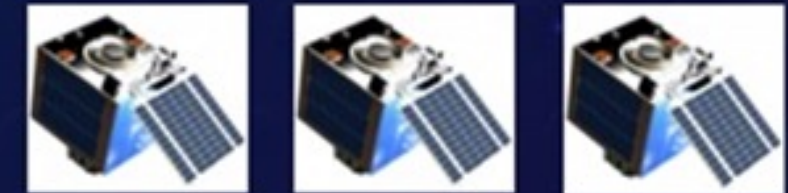
2026-2027



2029



2034



2038

THEOS-5&6

(Active & Passive Payload)

THEOS-7&8

(Active & Passive Payload)

THEOS-9A,9B,9C

(Passive Payload)

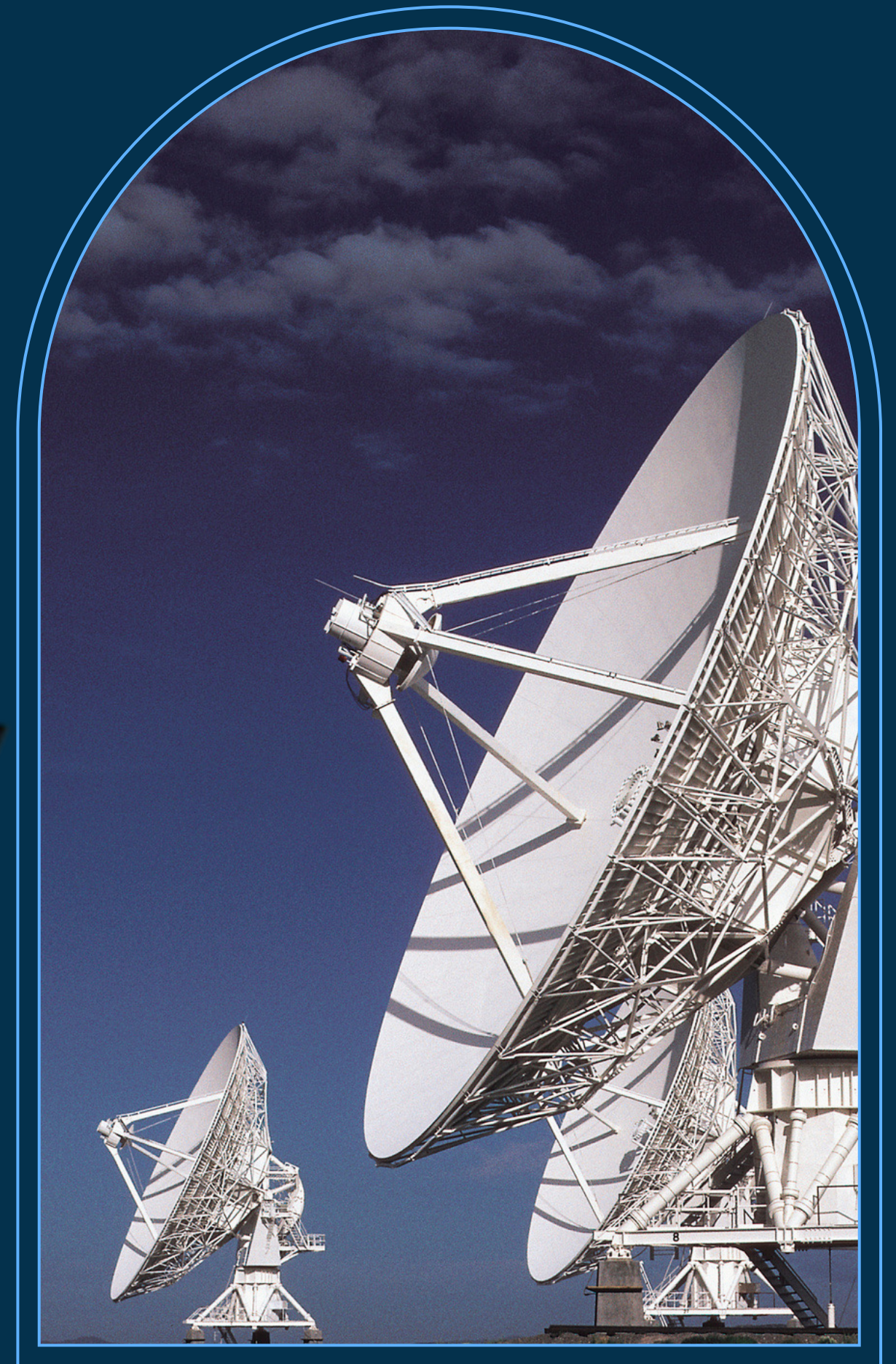
THAILAND BASE MAP

Thailand Base Map from satellite images resolution 2 meters



- SATELLITE BASE MAP 2 m (THAICHOTE & OTHER)
- SATELLITE BASE MAP 10 m (SENTINEL-2)

Ground Equipment and Services

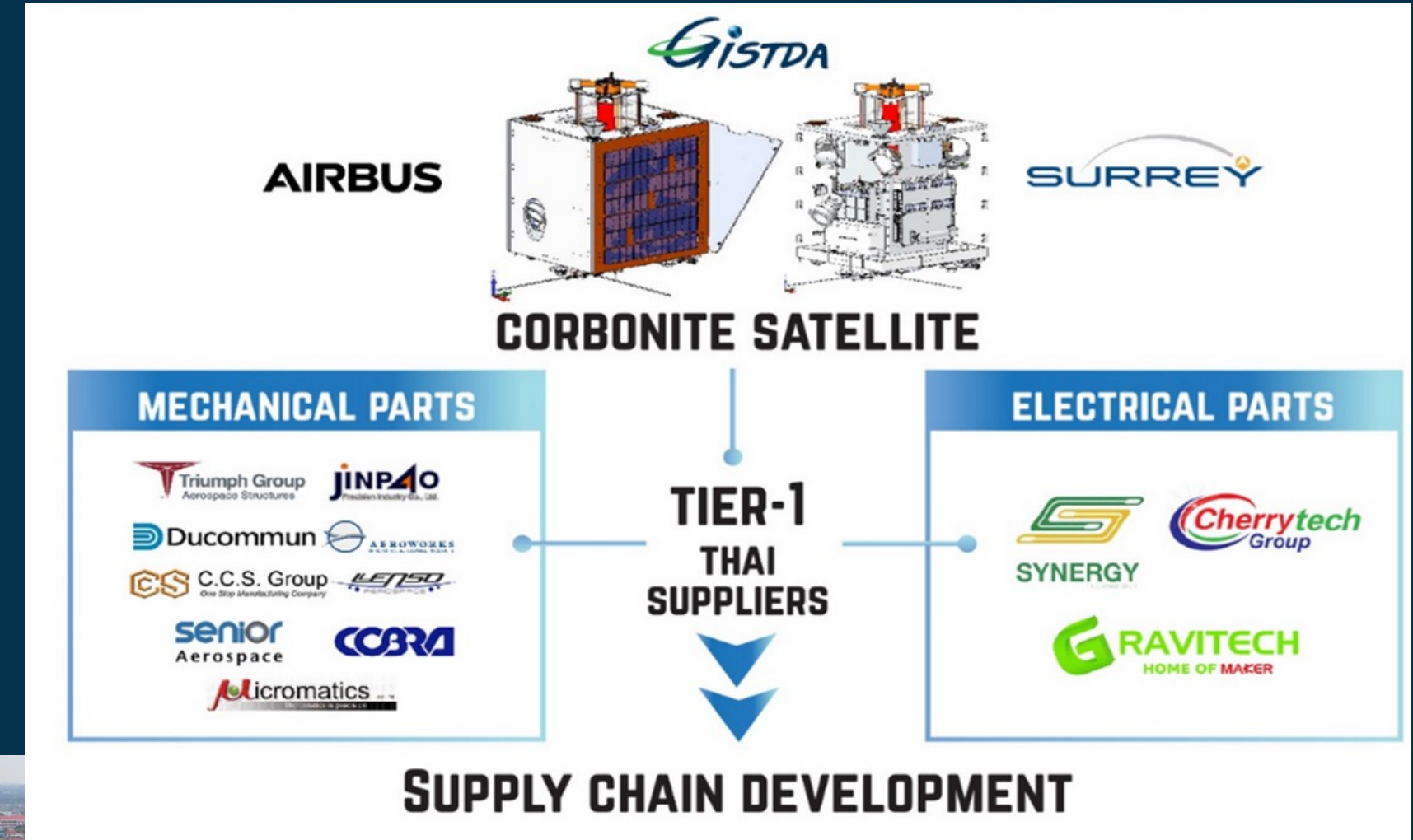
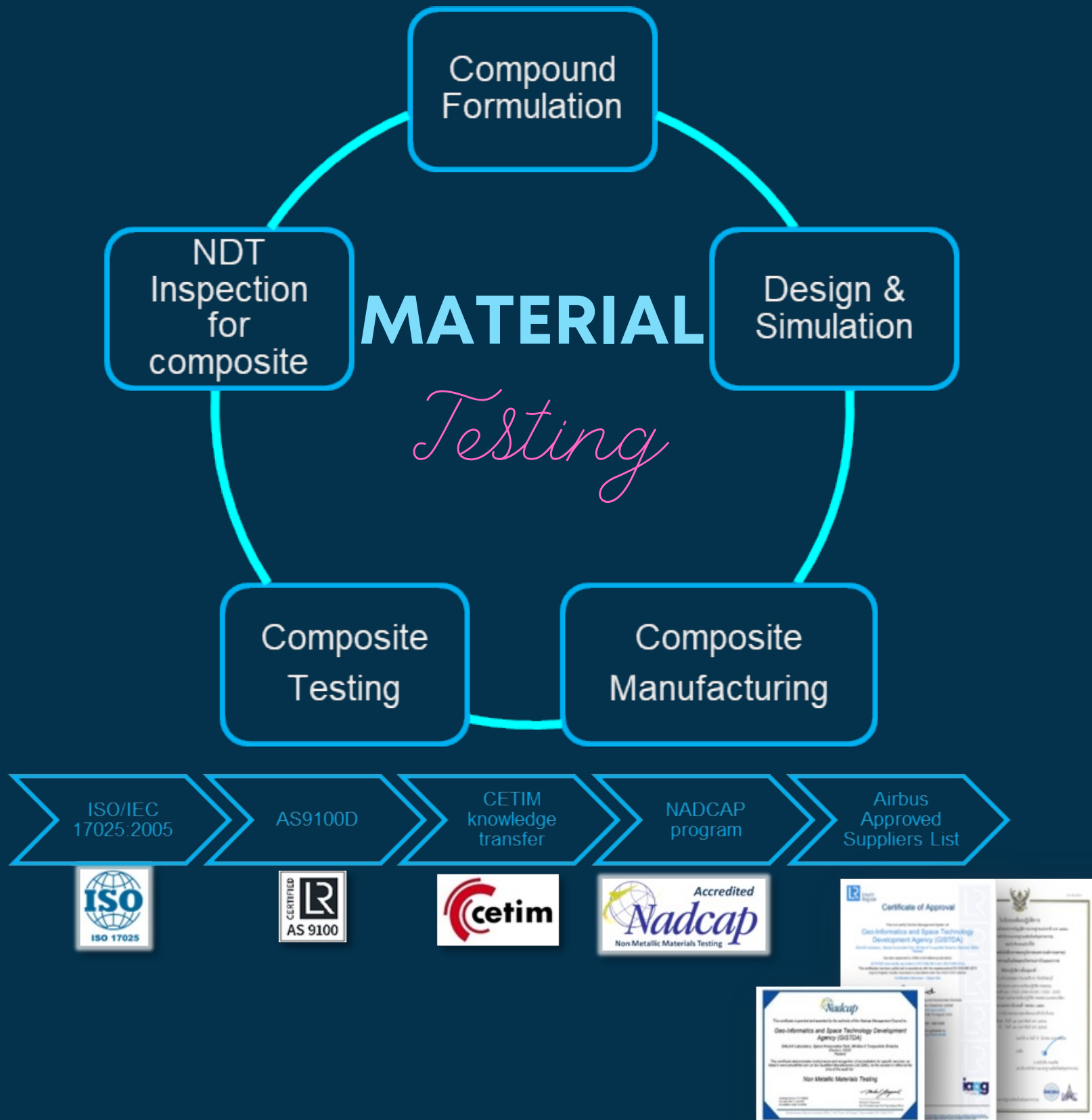


Complete Cycle for Ground
Segment Development in
Thailand



National Infrastructure for Satellite Development

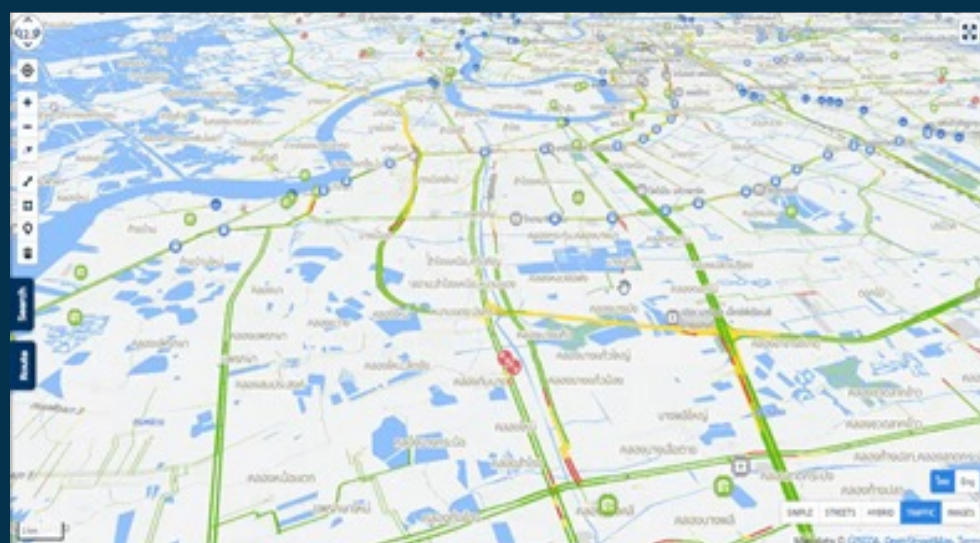
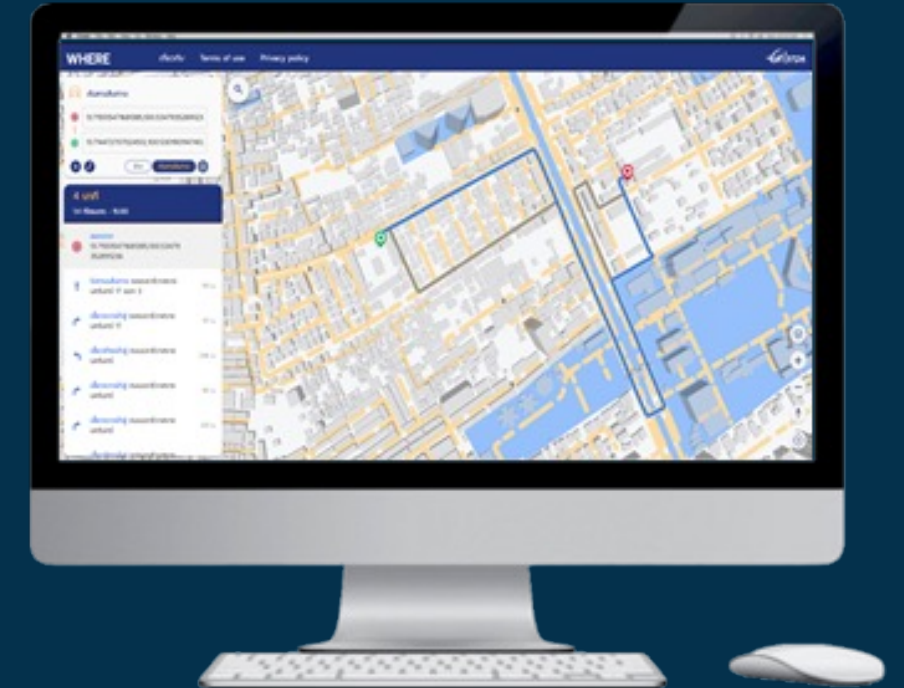
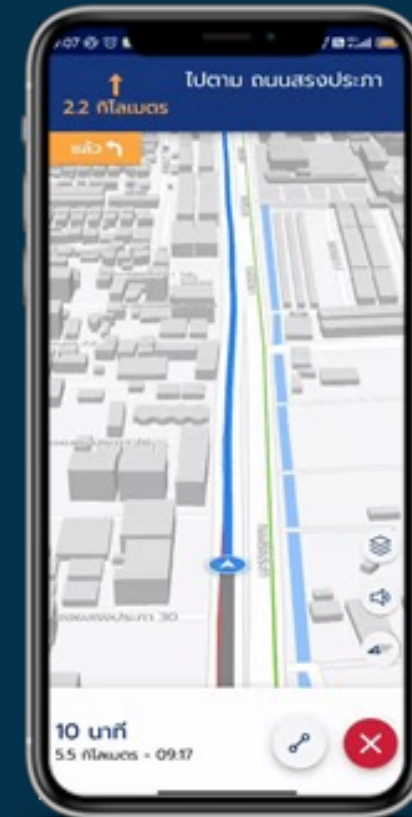
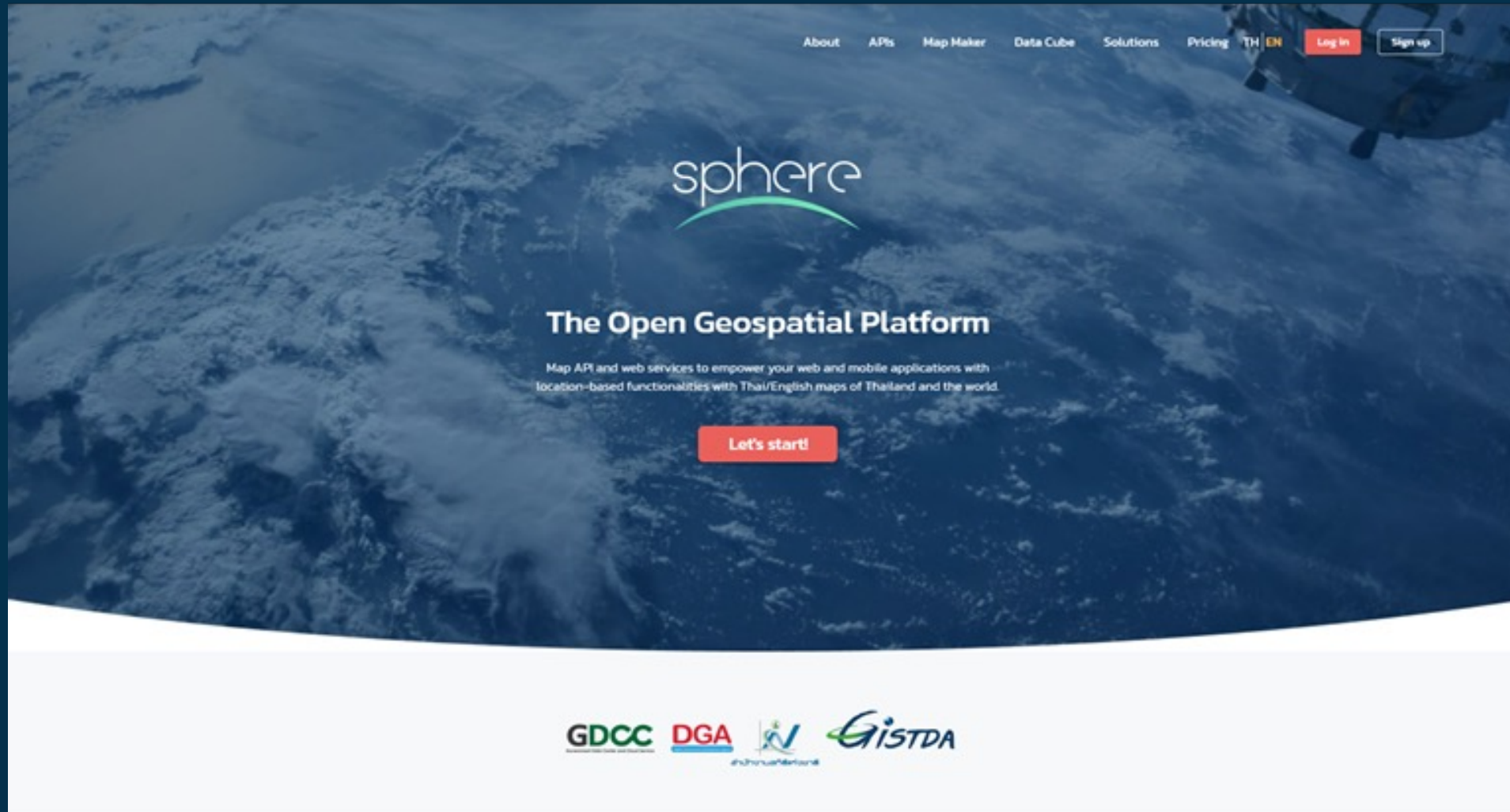
GALAXi LAB



AIT

sphere

sphere.gistda.or.th



DATASET

- ✓ **Basemap**
2-meter resolution with simple access
- ✓ **Satellite-as-a-Service (SaaS)**
Satellites use remote sensors to obtain information about diverse features of the Earth's surface
- ✓ **More...**
DEM | POI | AOI | Building Footprint | Admin. Boundary



TOOLS

- ✓ **Maps API**
Open-source map library for web browser and mobile-friendly interactive maps.
- ✓ **mapMaker**
"Make & Share"
- ✓ **eXeCube**
Easy web-based spatial and space-time computation



APPLICATIONS

- ✓ **WHERE**
Turn-by-turn navigation. Select your destination, plan your own route. WHERE will navigate you. On road, as you wish.

DIGITAL SERVICE PLATFORM

Objective **Accessibility**
Availability
Affordability

Digital Gateway to Geospatial
Data

Products

Satellite Imagery

- Thaichote (Archive)
- THEOS-2 (Tasking/Archive)
- Partners' Satellite Imagery
- Landsat / Sentinel / Worldview 1,2,3

Search for imagery

THEOS-2/ THAICHOTE

Search for More Products

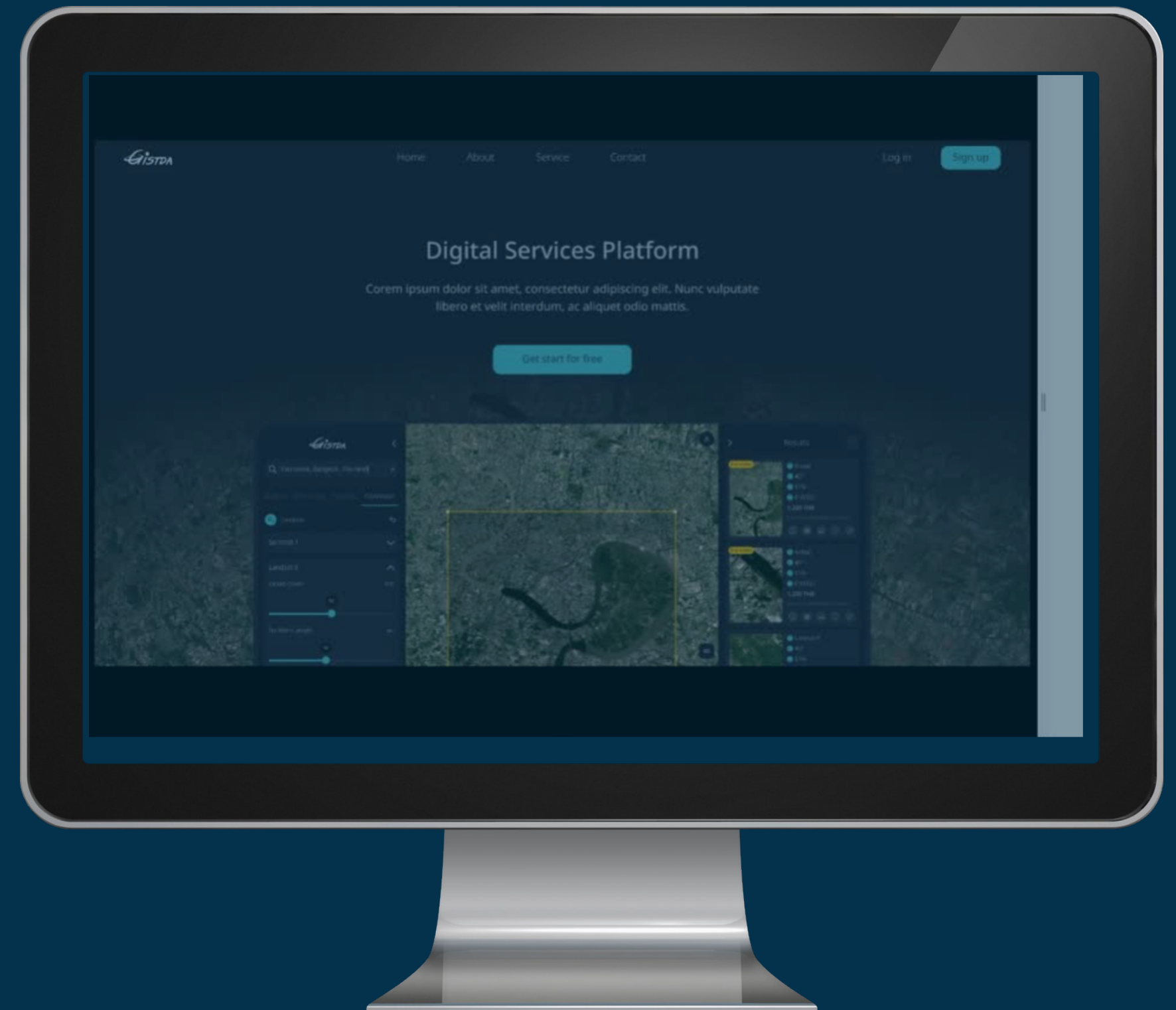
Data/ Map/ Data Sensor/ Souvenir SI
Shop/ Book/ Multimedia

Add to Cart

Place Order & Download

Payment

Tracking your orders





IV. DRIVING DOWNSTREAM SPACE ECOSYSTEM DEVELOPMENT AND ECONOMIC GROWTH





GISTDA

Channel Partnership



Distributor



Partner

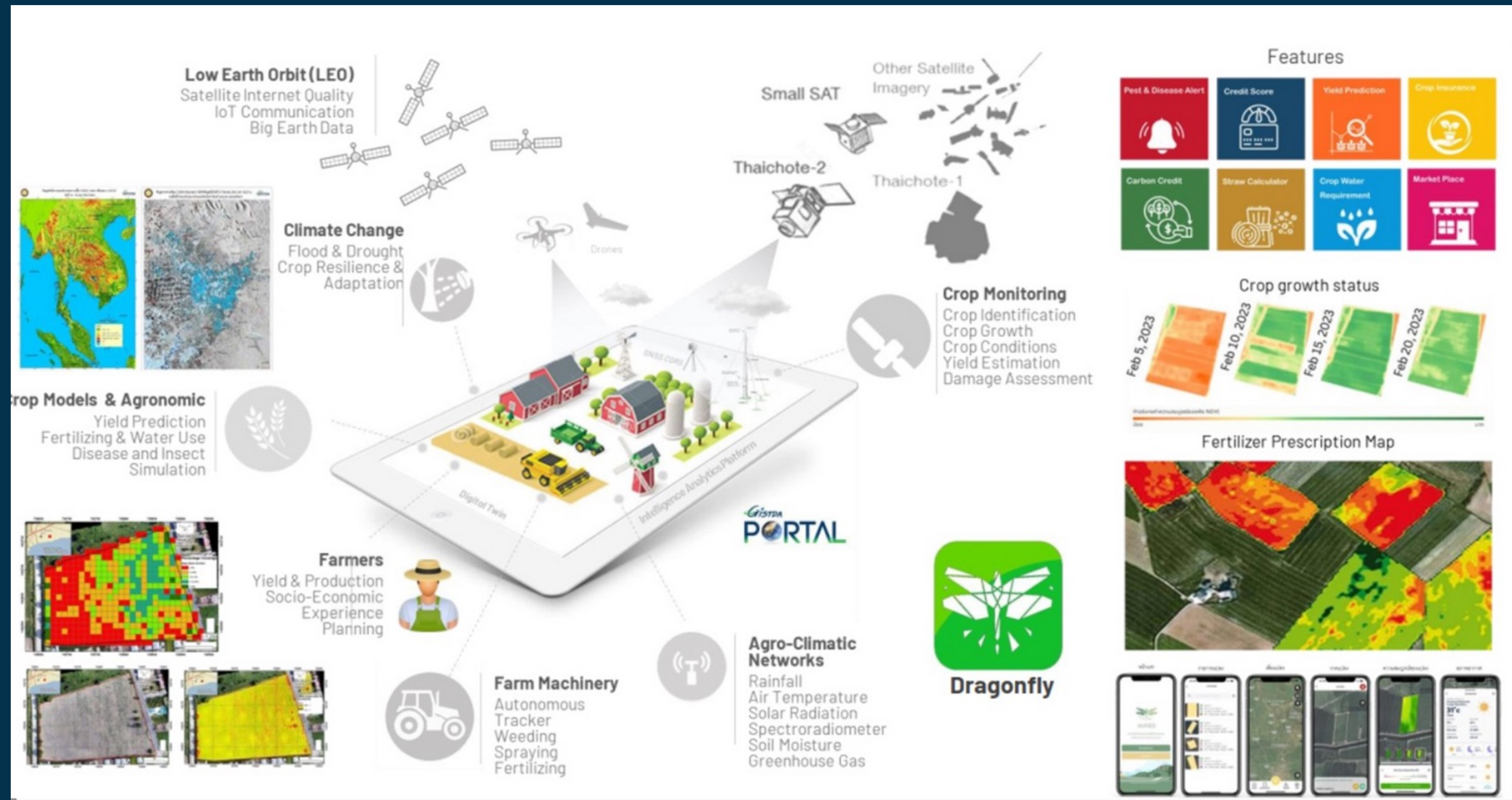


Collaboration

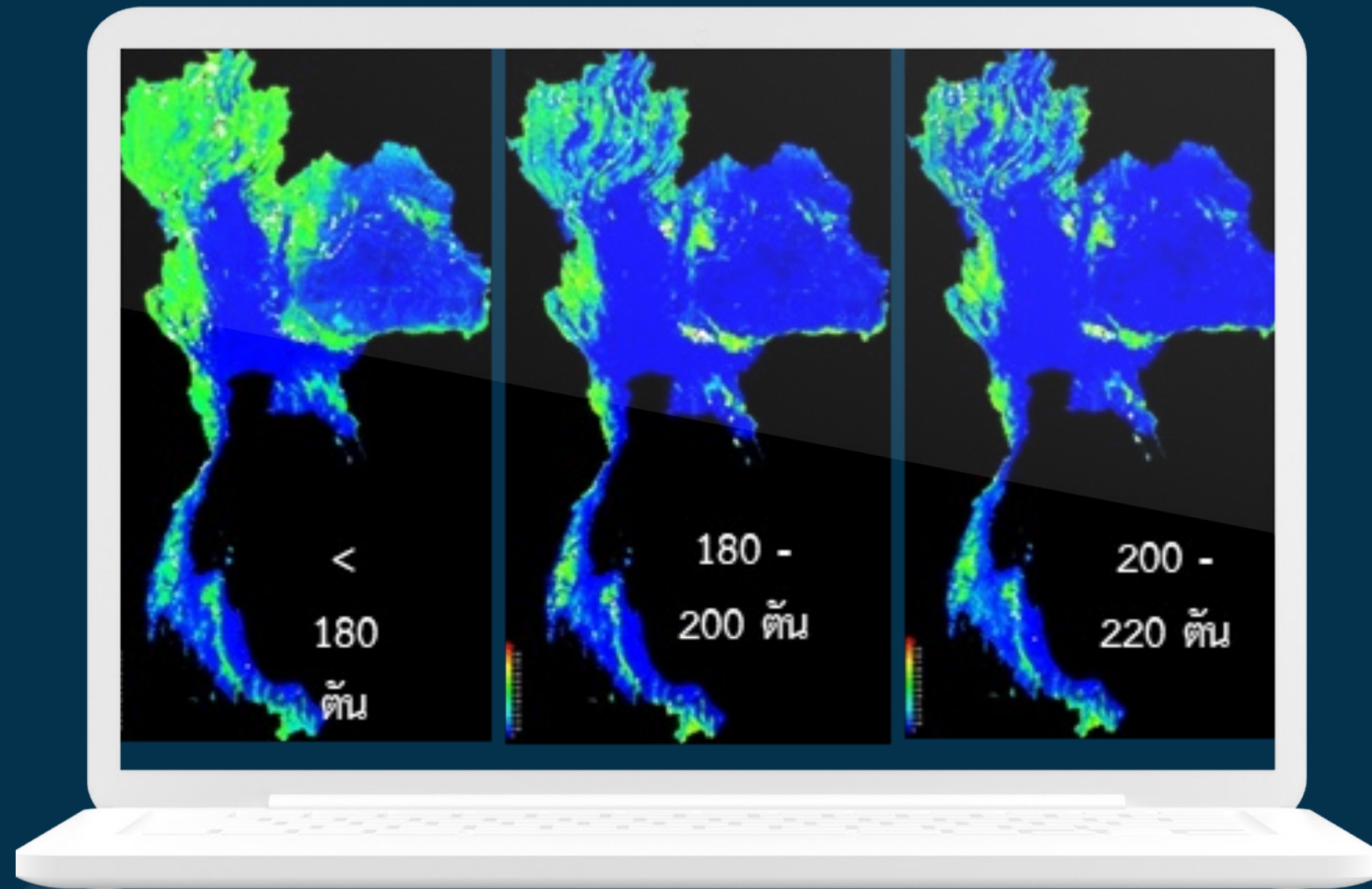
Case studies of successful collaborations

Dragonfly

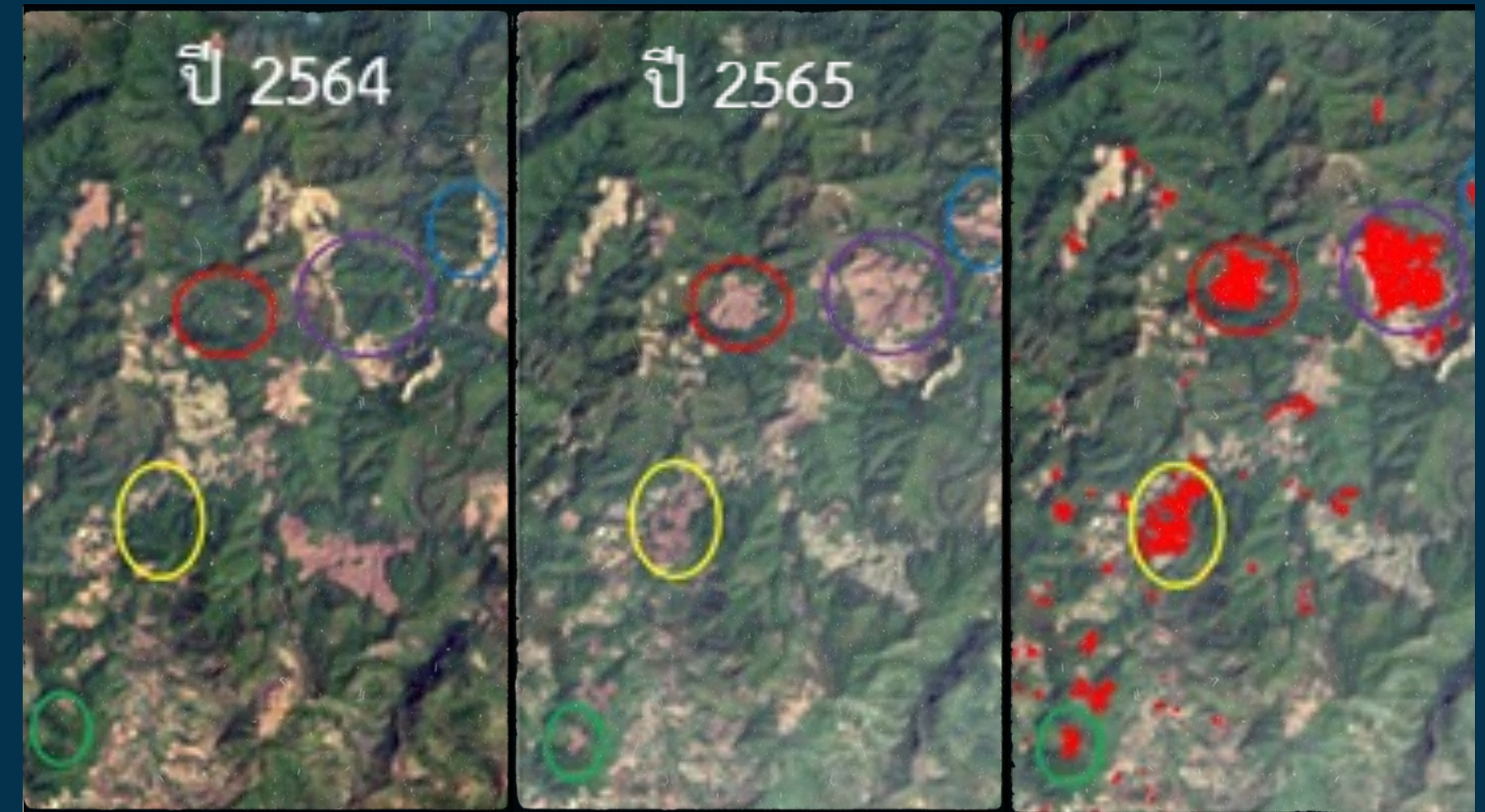
(Plot-by-plot spatial agriculture platform for farmers)



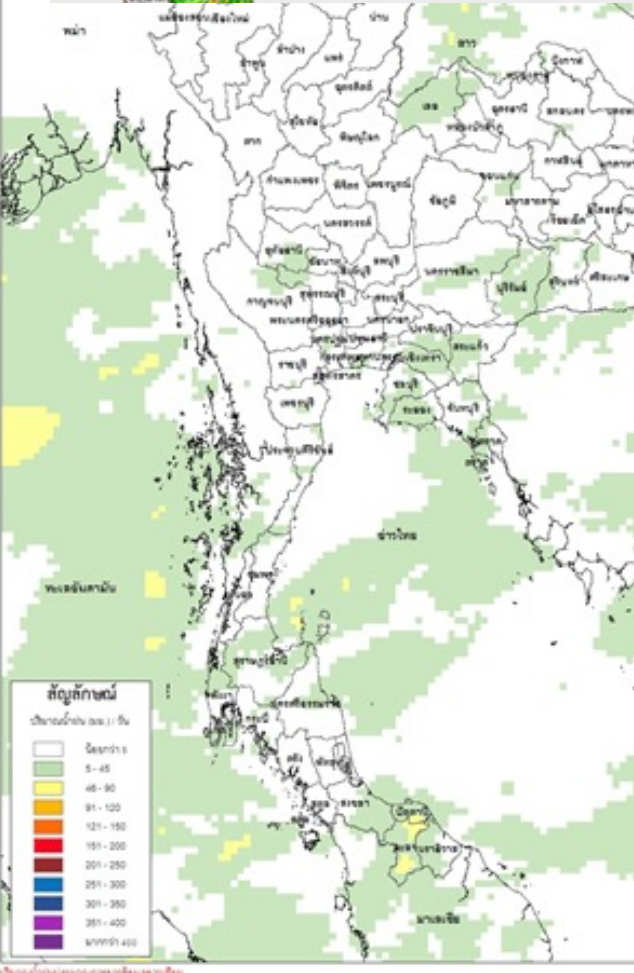
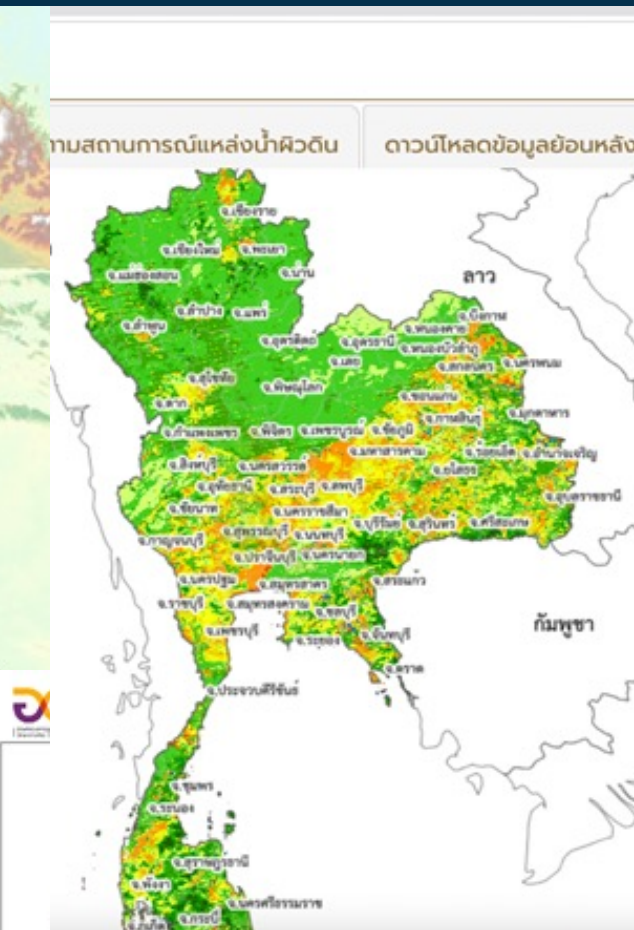
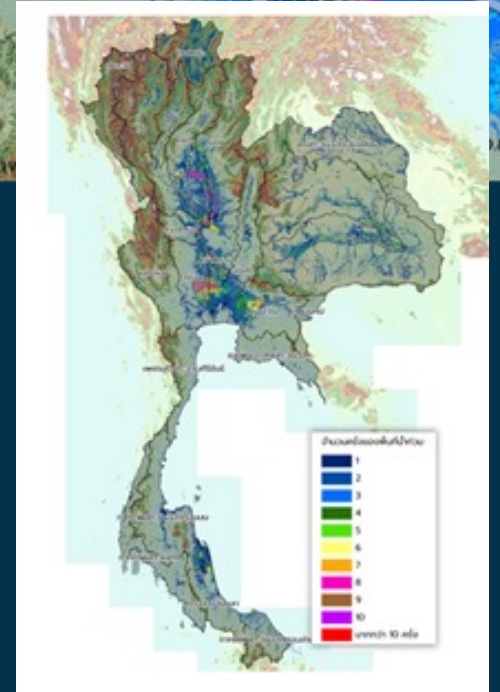
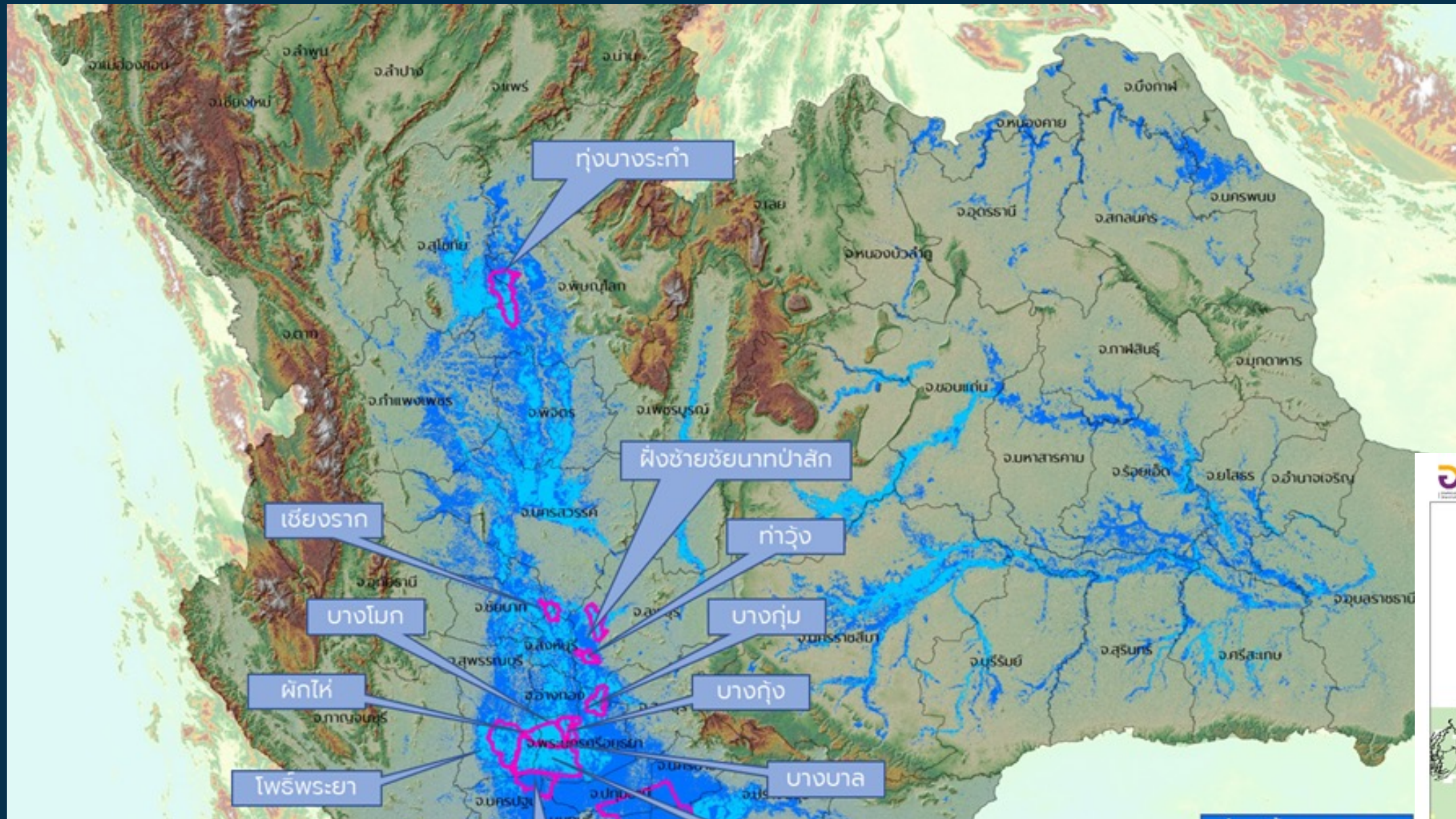
Assessment of Carbon Credit in Forest Areas



Targeting Suspected Forest Encroachment Areas



Disaster



KNOWLEDGE ECOSYSTEM

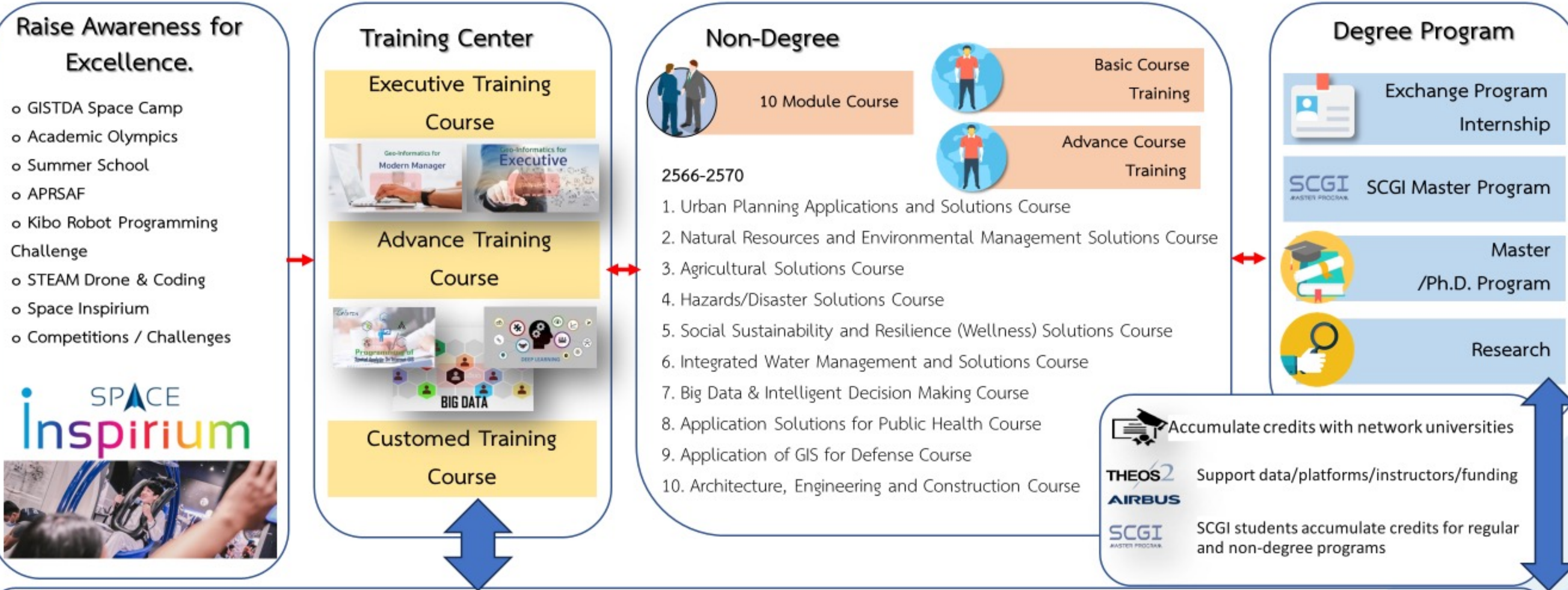
One Stop Service

Space-Ed Lifelong Learning platform

Under Sirindhorn Center for Geo-Informatics: **SCGI**



- Disaster
- Water
- Agriculture
- Urban
- Mapping
- Natural Resources & Ecosystems



Professional standards and qualifications for the Digital Industry profession, specializing in Space Technology and Geoinformatics
 Geoinformatics Technologist / Remote Sensing Surveyor / Satellite Engineer

Manpower Development 2024
 300,000 people

Partners & Networks



Key Takeaways



- Utilize satellite imagery for innovation
- Propel the downstream space ecosystem



GISTDA

PLEASE SAVE THE DATE

7 - 9 NOV 2024

**THAILAND
SPACE WEEK
2024**

VENUE

IN BANGKOK, THAILAND

PLENARY

EXHIBITION

**BUSINESS
MATCHING**

**YOUTH
FORUM**

SIDE EVENT

**EXCLUSIVE
MEETING**



CONTACT



Tel: +662141 4556

Fax: +662143 9605



E-Mail: siriluk@gistda.or.th

Line ID: [siriluk_gistda](#)



www.gistda.or.th



GISTDA, 120 The Government Complex

Ratthaprasasanabhakti Building 6th and 7th Floor

Chaeng Wattana Road, Lak Si District, Bangkok

10210, Thailand