



[\*\*CLICK TO KNOW MORE\*\*](#)

# SATSURE

---

## EO Platforms: From Data Access to Data Insights

Downstream Space Summit, GWF 2024

Bangalore, India  
London, UK  
Philadelphia, USA

# About **SATSURE**

Empowering decisions through satellite data



2017

Founded in 2017, Series A Co.



\$20 MN

Funding raised



160

Employee strength

## OUR INVESTORS



BARING PRIVATE EQUITY  
PARTNERS

 **HDFC BANK**



**promus**ventures

 **ICICI Bank**



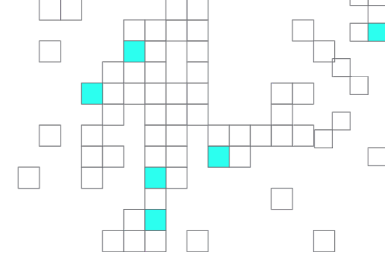
OMIDYAR NETWORK INDIA

 **ADB Ventures**

 **TransUnion**<sup>tu</sup>

 **kotak**  
Kotak Mahindra Bank

**SATSURE**



## Full Stack Offering

**Data Origin**



**KALEIDEO**

Sending 4+1 low orbit satellites  
with edge computing

**Data Refinery**



**SATSURE  
SPARTA**

Platform for application  
ready data products

**Data Solutions**

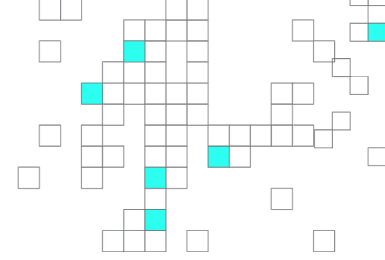


**SATSURE  
SKIES**

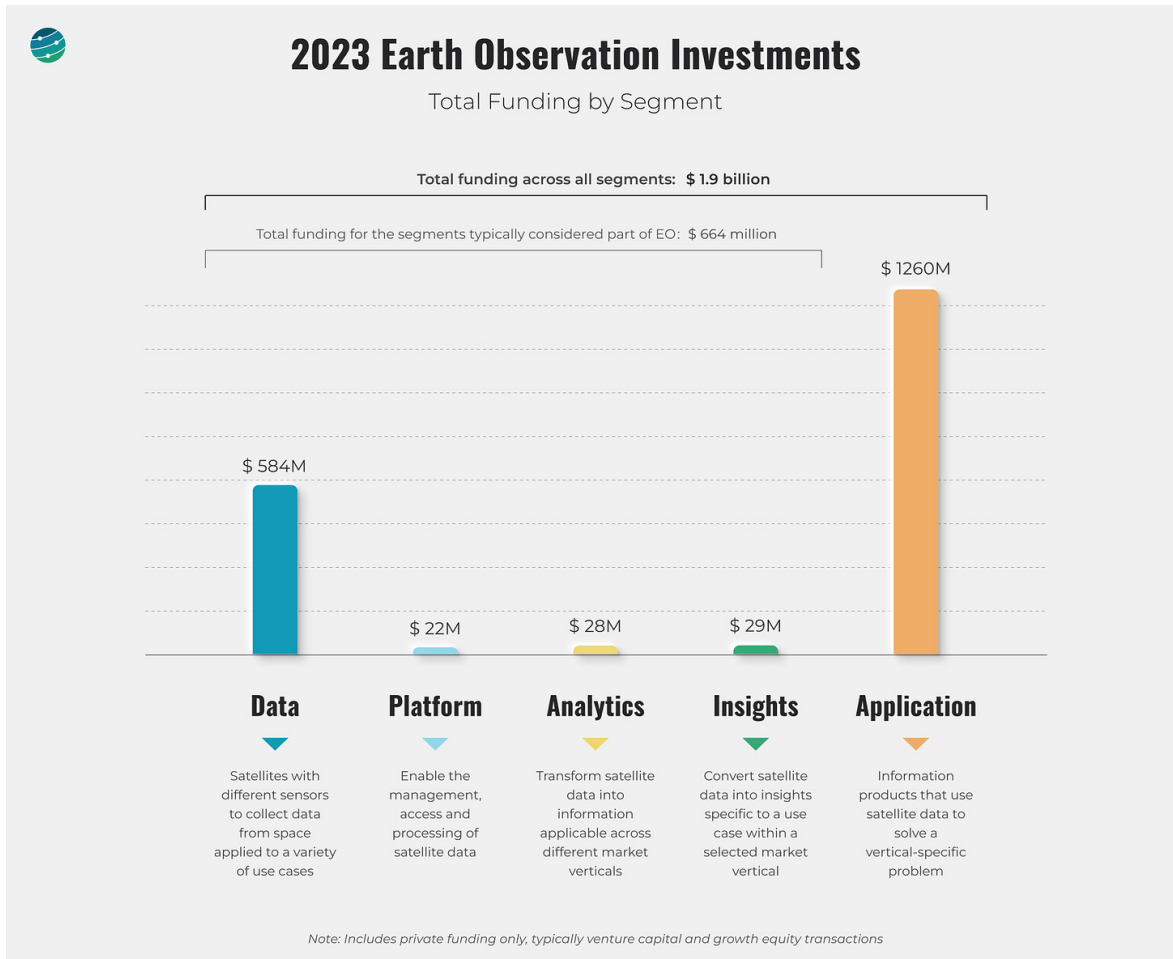
Aviation

**SATSURE  
SAGE**

Agri Credit



# The State of EO Platforms



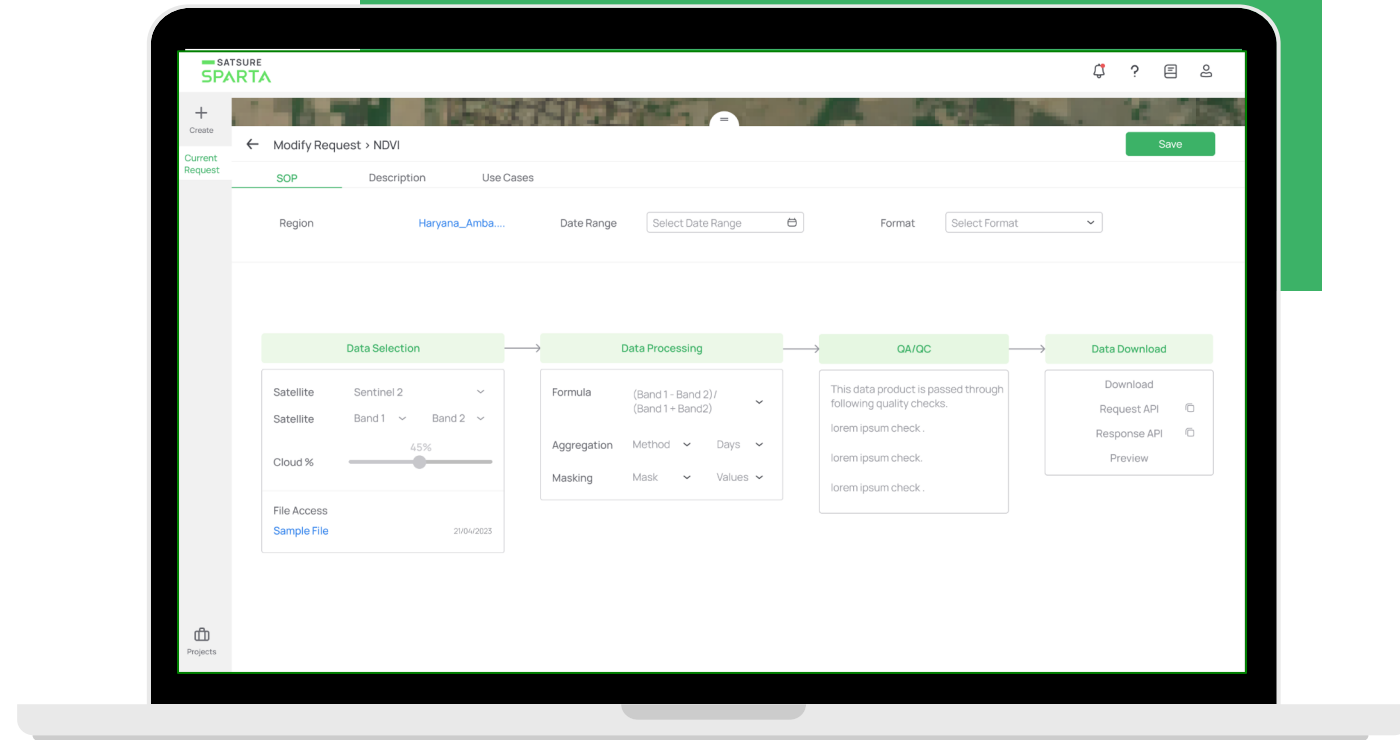
Only 3% of investment in the EO sector has gone towards platforms, which is not surprising because they are abstract and difficult to comprehend. They neither represent the raw materials nor do they represent the final product.

Quoting **Aravind Ravinchandran**:  
*"Earth observation is a sector that is built by tens of thousands of people and used by hundreds of millions of people. And, for the sector to grow, we need to make it easy for the former to explore and innovate with EO so that they can solve the problems of the latter".*

# SatSure Sparta

A one of its kind **Earth observation DataOps platform**, revolutionizes management of enterprise's spatial datasets.

- Seamlessly integrating data from diverse sources, it allows **efficient data processing** and enables generating **application-ready products** accessible to the organization through STAC APIs.
- Provides tools for efficient enterprise level spatial data operations management, while enabling the **optimal IT resource deployment and data quality**.



# Tech stack | SatSure Sparta (Containerised deployment)

Visualisation



Data Connectors

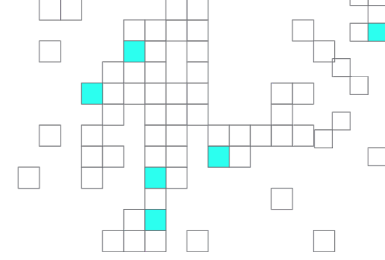


Processing



Data Lake



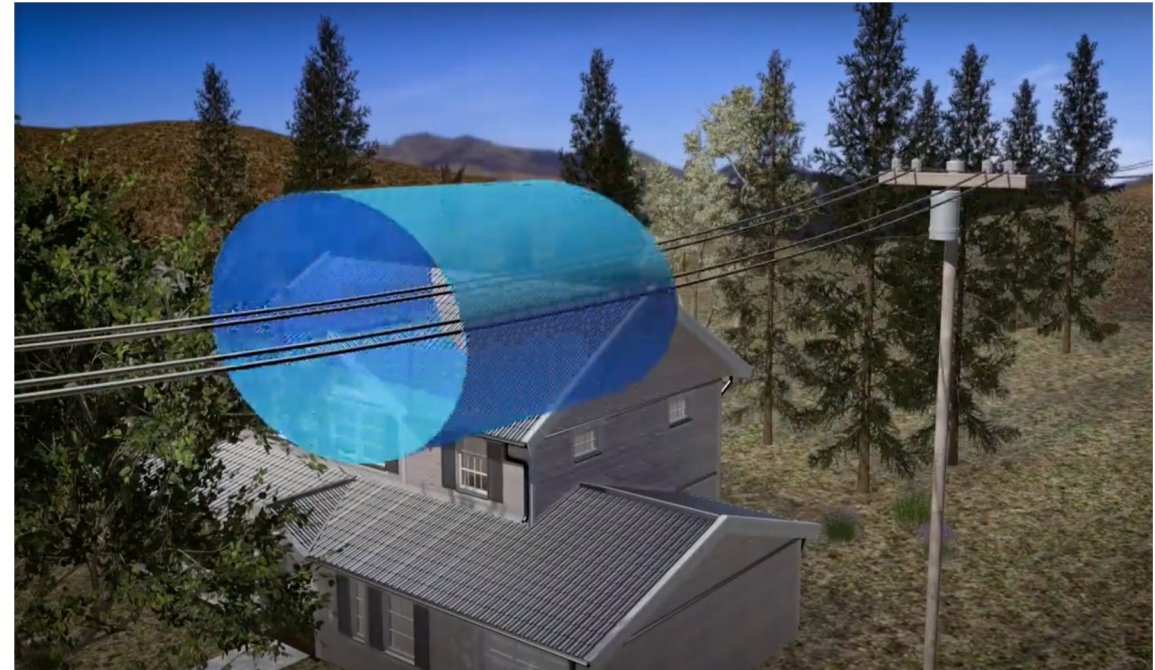


## Customer Case Study

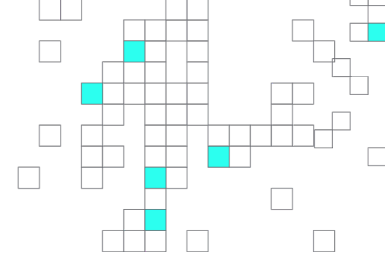
Power Transmission line operators spend a substantial amount of money on doing vegetation management. This case study is focused on how SatSure has created value for one large European customer through its Sparta platform.

Glossary of terms:

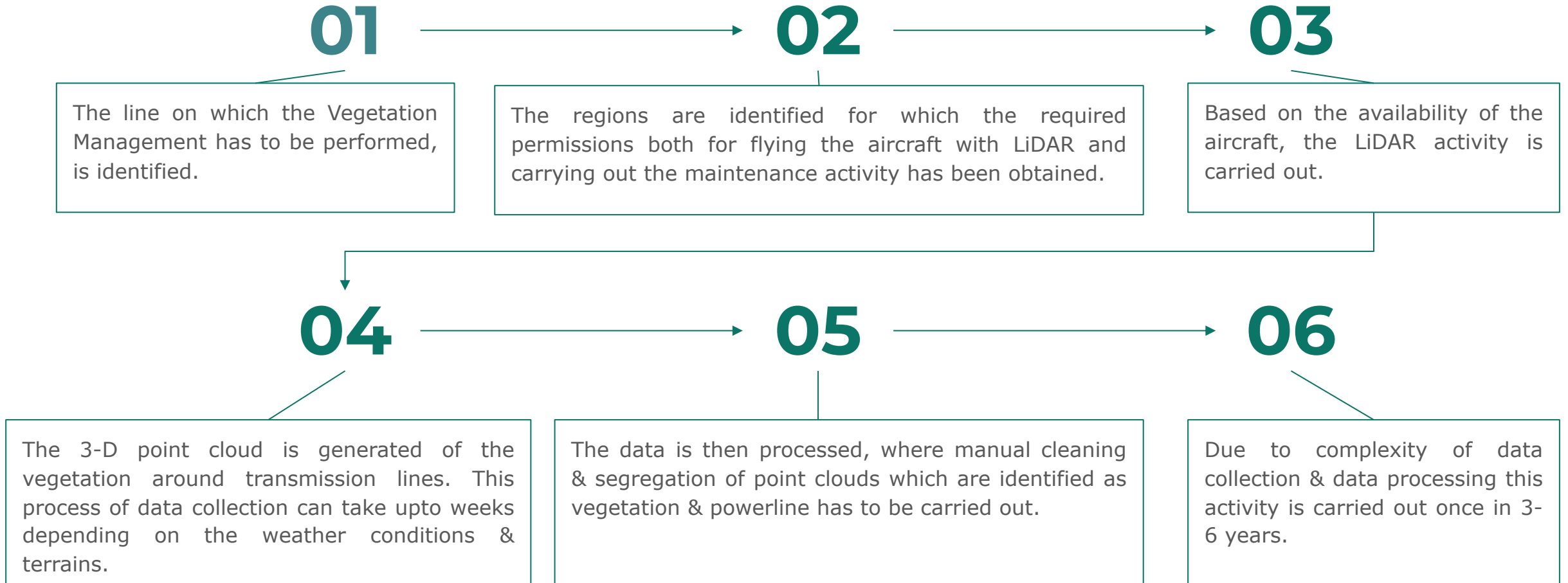
- **Anomaly** : If vegetation is within 2m radius of the cylinder around the conductor inside the RoW
- **High**: If vegetation is within 2m + 5m radius of the cylinder around the conductor inside the RoW
- **Low**: Any vegetation in RoW which is not Anomaly or High.
- **Fall Risk**: If the Vegetation is outside of RoW and is likely to fall.





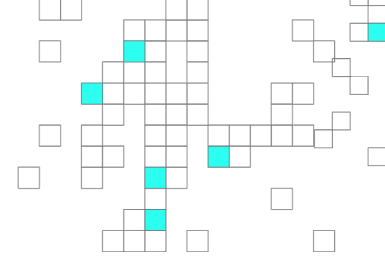


# Existing Practices of the Client



**This approach cannot be used for maintenance planning, identifying the anomalies, maintenance work auditing and remote payment disbursement which typically happens once or twice annually.**

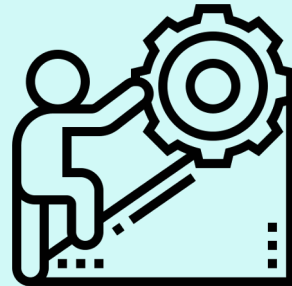
# Key Challenges Faced



Unable to timely identify the vegetation that require immediate attention

Sub-optimal maintenance activities & field force productivity

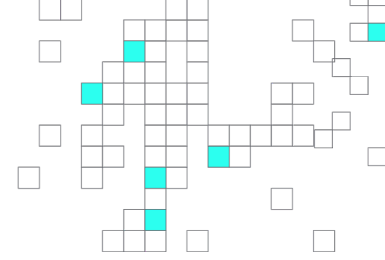
Difficulty in carrying out remote & reliable auditing of maintenance activities performed by third party contractor due to lack of transparency.



Lack of near real-time data to plan effective risk management

No automated work order management

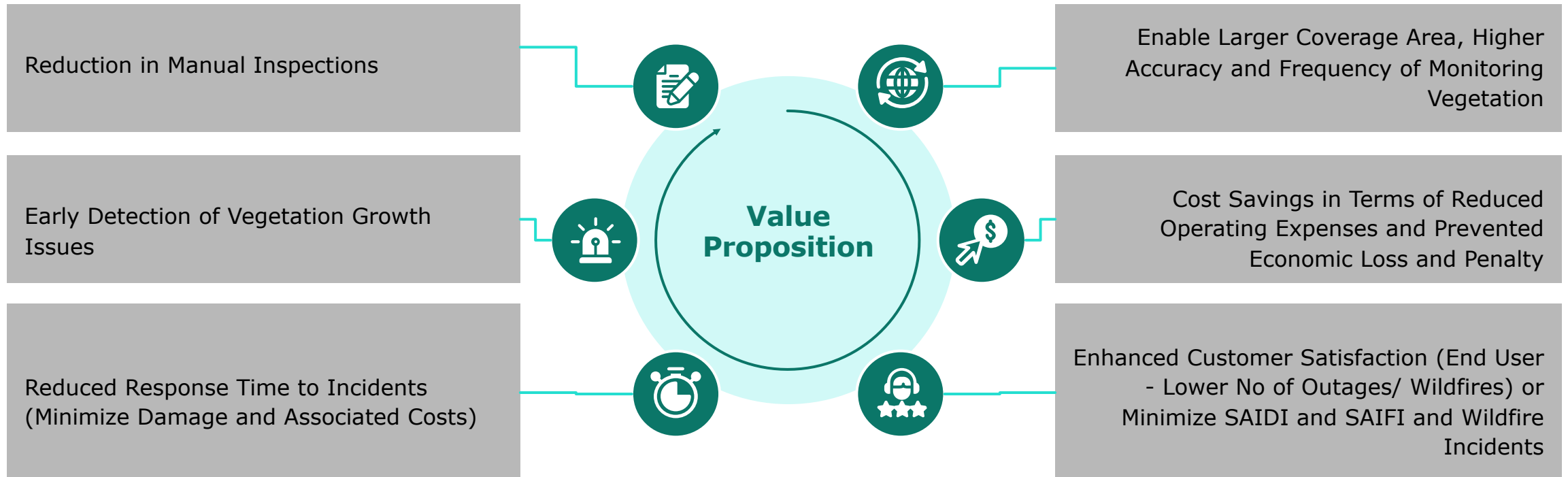
Outages & Wildfires caused due to suboptimal vegetation management



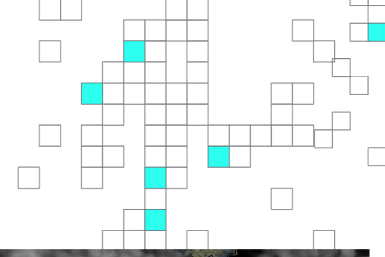
## SatSure Sparta Solution

Automate identification of **vegetation growth near transmission lines & change in the growth at periodic interval (more increased frequency) using satellite remote sensing technology enabling efficient pruning and audit of the same**; maximising value per mile.

High resolution satellite images are ingested within the platform, where the model repository also resides. The images go through pipelines for pre-processing in an automated manner, followed by automated feature extraction like vegetation layer, tree layer, etc.



## Data Processing Steps



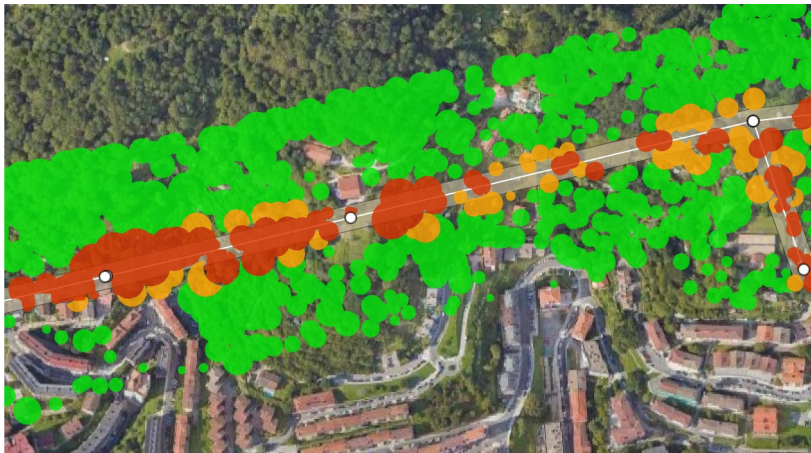
The transmission / distribution line is mapped onto the recent high resolution satellite image



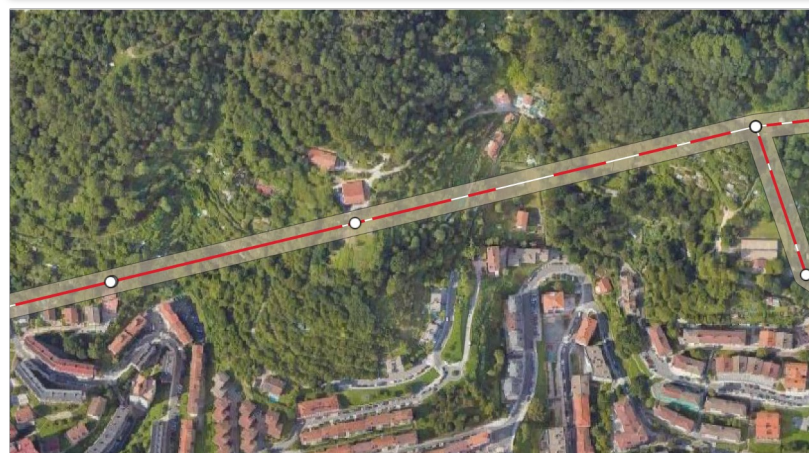
The vegetation mask algorithm is implemented on the hi-res satellite images for detecting vegetation in and around the ROW of the power line



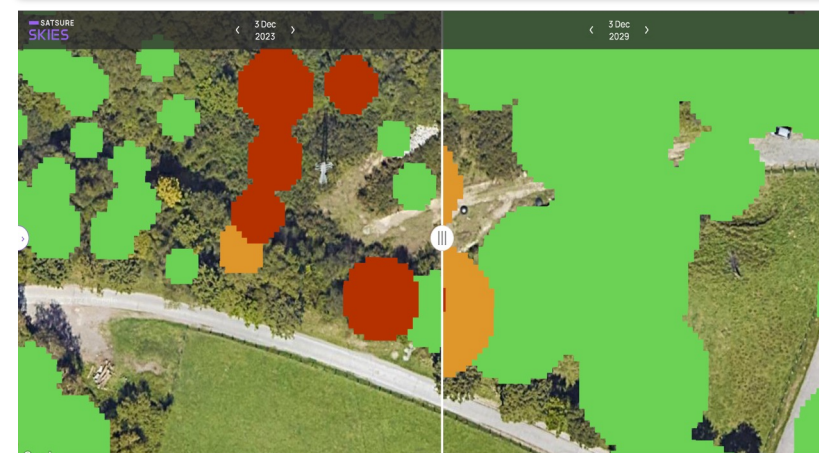
Using stereo pair satellite images, height of the vegetation is determined



Based on the proximity, growth of vegetation, fire risk, and other business logic, vegetation risk categories are determined.

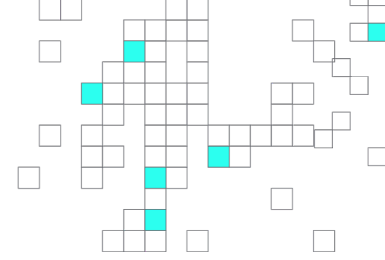


The length of the maintenance of vegetation is determined for quantifying the maintenance work that needs to be done



Audit the work completion & changes in risk in upcoming maintenance cycle to optimize budgeting

## Integrate Land Use Layers



**SATSURE SKIES** | L306515 | EN ES | 03 Dec 2023 | 03 Dec 2024 | 03 Dec 2025

### Risk Analysis

All Risks

Segment ID: 2251755  
34.234553, 56.567874

Length of High Risk	432 m
Length of Medium Risk	289 m
Length of Low Risk	156 m

Height of Tower 03	32 m
Height of Tower 04	32 m
Length of Span	221 m
Sag of Cable	6 m
Segment Length	1480 m
Voltage	13.2 kV
Wind Speed	25 kt
Wind Direction	↙
Ambient Temperature	30 °C

Corridor Width : 22 m  
Height Threshold : 7 m

Total Line Length : 12.13 km  
Total No. of Towers : 517  
Vegetation Management  
09/02/2024, 18:45:24 IST

#### Layer Control

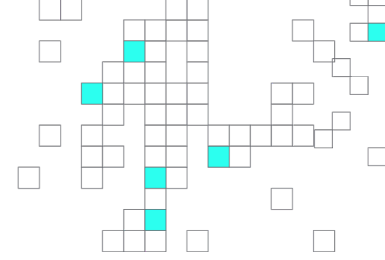
Features:  Satellite Images:  Google Maps Satellite:  Google Maps Roads:  Vector Layers:  High Risk Zone:  Medium Risk Zone:  Low Risk Zone:  High Risk Trees:  Medium Risk Trees:  Low Risk Trees:  Power Line:  Falling Radius:  Raster Layers:  Beste errepide batzuk / ...:  Bidea /Camino:  Biltegia /Deposito:  Carreteras de doble cal...:  Eraikin arina / Edificaci...:  Eraikin erlijiosoa / Edifi...:  Errepide nagusiak / Ca...:  Igerilekua / Piscina:  Industria-nabea / Nave...:

**View only high risk trees across the whole line**

**View Fire Risk Zone**

**View land use land classification across the RoW**

## Automate Work Audit



**SATSURE SKIES** | L306515 | EN ES | 03 Dec 2023 | 03 Dec 2024 | 03 Dec 2025

### Risk Analysis

All Risks

Segment ID: 2251755  
34.234553, 56.567874

Length of High Risk	432 m
Length of Medium Risk	289 m
Length of Low Risk	156 m

Height of Tower 03	32 m
Height of Tower 04	32 m
Length of Span	221 m
Sag of Cable	6 m
Segment Length	1480 m
Voltage	13.2 kV

Wind Speed	25 kt
Wind Direction	↙
Ambient Temperature	30 °C

Corridor Width: 22 m  
Height Threshold: 7 m

Total Line Length: 12.13 km  
Total No. of Towers: 517  
Vegetation Management  
09/02/2024, 18:45:24 IST

**RISK**  
HIGH → MEDIUM

**CO-ORDINATES**  
34.234553, 56.567874

**ACTION LENGTH (m)**  
15.64

**ACTION (SUGGESTED)**  
Pruning

**ACTION (ASSIGNED)**  
Pruning

**ASSIGNEE**  
+

**WORK COMPLETION**  
COMPLETED

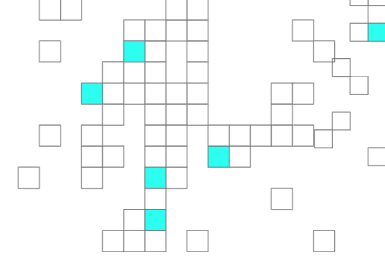
Compare

**View change in risk for the region where work was performed**

**Compare visually the change in risk over different time stamps**

**View status of the maintenance work completion**

## Work Prioritization & Allocation



**Shortlist based on the categories of risk & action type**

**Bulk assign the maintenance task to the fieldmen based on risk & action type**

**View status of the maintenance at segment level**

**View total costing of the maintenance work**

**Add unit cost of maintenance to be carried out**

SATSURE SKIES | L306515 | EN ES | 03 Dec 2022 | 03 Dec 2023 | 03 Jan 2024

Line Risk Analysis | Segment Assignee | High Risk x | Pruning x | Line Length : 12.13 km

Segment ID	Length (km)	Segment Assignee	Status
01	0.2	+	
02	0.1	+	
04	0.12	+	Approval Pending
05	4	+	On Going
09	1.0	+	Approval Pending
10	0.4	+	Approval Pending

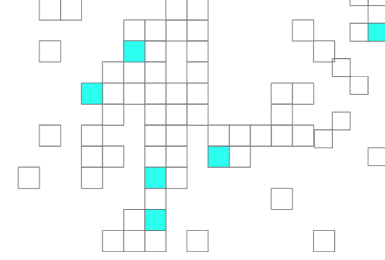
Segment Assignee dropdown menu:

- Select member
- AP Alex P (chirag@xyz.com)
- DG Don Gres (thaiseer@xyz.com)
- AS Andres S (andres@xyz.com)

Summary:

Length of Pruning (km)	4.5	+	Length of Felling (km)	5	+	Length of Street Maintenance (km)	2	+	Length of Herbicide Application (km)	0.63	=	Total Maintenance Cost (Euro)	226.96
Unit Cost (Euro/km)	19		Unit Cost (Euro/km)	13		Unit Cost (Euro/km)	25		Unit Cost (Euro/km)	42			

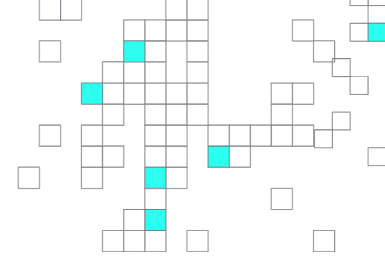
# ROI Delivered



Projected Case: Risk-based Trimming Strategy	
Parameter	Amount
Power line length	10000 km
Portion of network analyzed each year (one-year cycle enabled due to higher frequency and coverage capability)	100%
Risk-based Trimming Strategy leading to pruning of only high-risk vegetation; leading to reduction of carbon footprint, in line with SDGs.	-
Corridor width	25 feet
Mechanical Trimming Cost & Audit Cost (EUR per km) (Assuming an overall 20% reduction due to reduction of actual trimming work, 60% reduction in field visits due to removal of duplication of work during audit, cost reduction based on price by volume trimming)	576.8
Lidar Cost (EUR per km)	0
Total Cost of VM (EUR per km)	635
Reduction of Total cost of VM	42%
Savings (EUR per km)	457
Investment (EUR per km)	58
<b>ROI</b>	<b>687%</b>



## Conclusion



The SatSure way for productizing EO and Geospatial data:

- Focus on the customer needs and stop selling pixels
- Focus on the boring stuff like managing data and models
- Focus on solving problems that are big enough

**THANK YOU**

**SATSURE**

