



[**CLICK TO KNOW MORE**](#)



KALEIDEO

————— A SatSure Company

GWF 2024

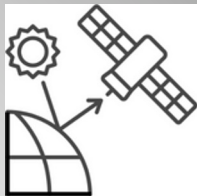
**Session: AI/ML Revolution Transforming
Intelligence Fusion**

16th May 2024



How Are We Building SatSure

Data Origin



Data Refinery



Data Solutions



KALEIDEO

Sending 4 low earth orbit satellites with edge computing. Enable Upstream integration

SATSURE SPARTA

Platform for application ready data products

SATSURE SKIES

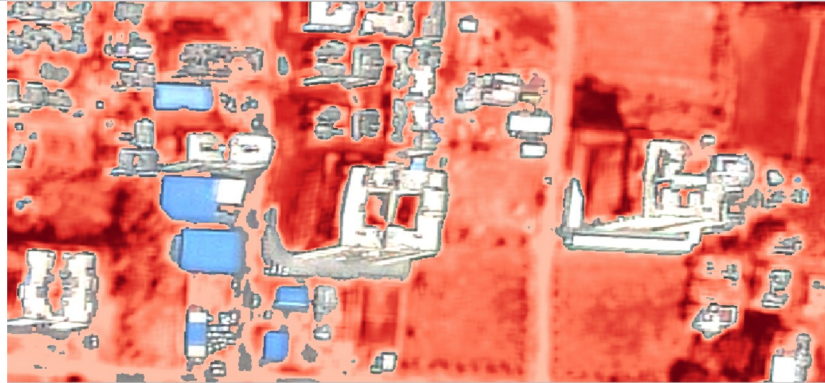
Infrastructure monitoring

SATSURE SAGE

Farm credit management



Change Detection



The modified index now neglects the changes due to illumination difference and view angle.



Automated Georectification



Matched template (High Res of 1m GSD)



Template (Low Res of 10m GSD)

Super Resolution

Mumbai Airport



Sentinel 2 data (10m GSD)



Super-resolved (2.5m GSD)



Super Resolution

Area near northern Kashmir



Sentinel 2 data (Superresolved 2.5m GSD)

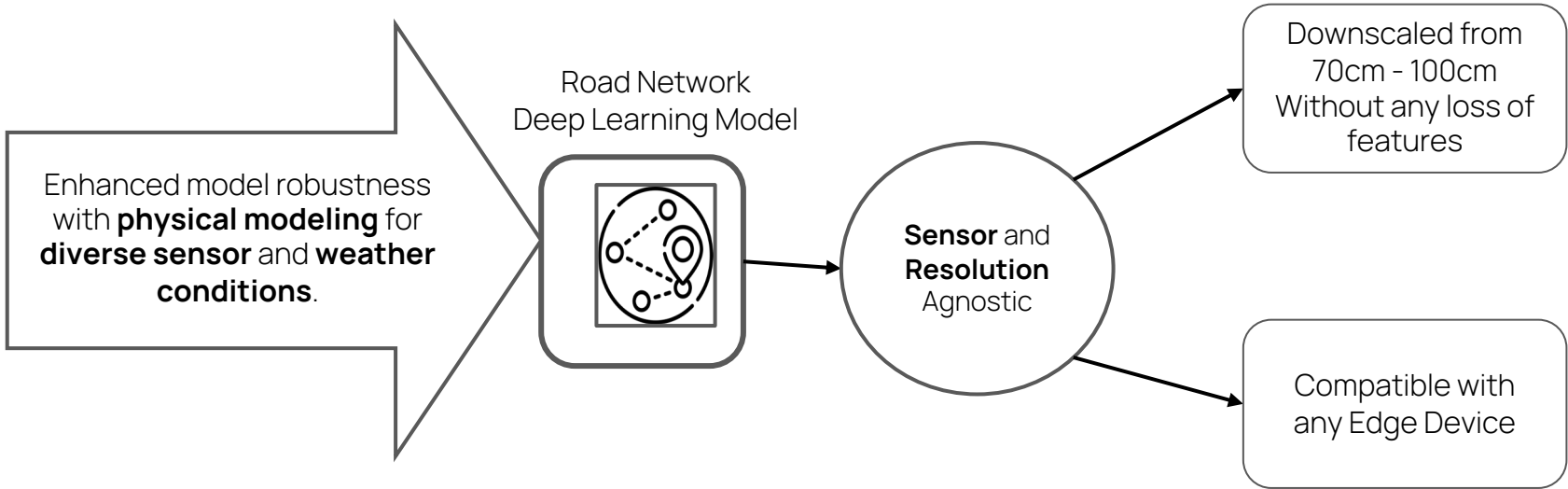


Super-resolved (1.1m GSD)



Edge Processing

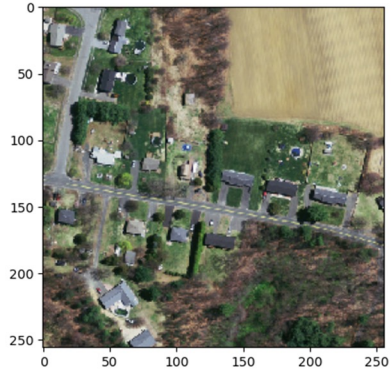
Model Selection and Training



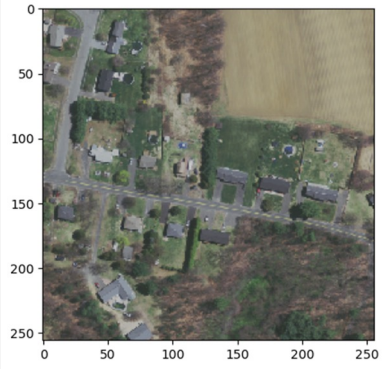
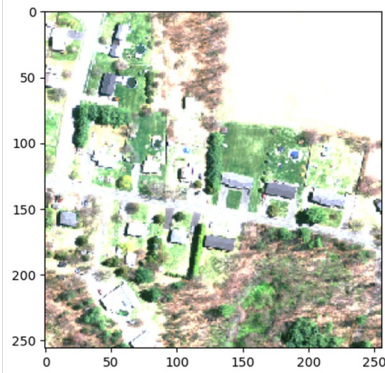
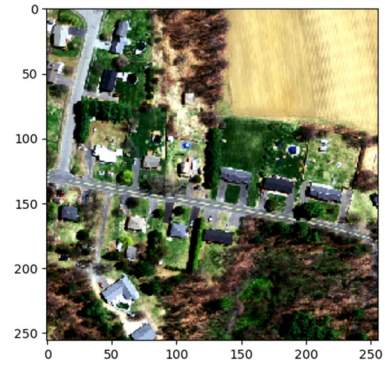
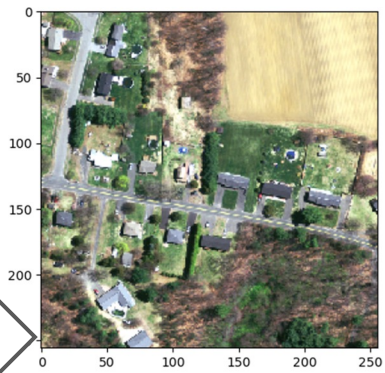


Edge Processing: Augmented Results

Input



Output





Edge Processing: Results

1m resolution image consisting of 554 km² area was processed on the edge

Tasks	Using general approach	Innovation at the edge	Magnitude
Neural network based inferencing	3 hours execution time	1.5 minutes	Fastened the process to over 80 times
Data volume reduction	1000 mb	6 mb	>99% volume reduced ready to be downlinked



Edge Processing: Results





Edge Data Processing

- Spiral Blue as on-orbit hardware/software interface partner.
- NVIDIA Jetson based GPU.
- Demonstrated on Satellogic: 0.7-0.8m PAN Image.
- U-Net Based Road Network Algo.
- Data volume reduction ~99% (~500 MB)
- Time of execution ~1.5 minutes.

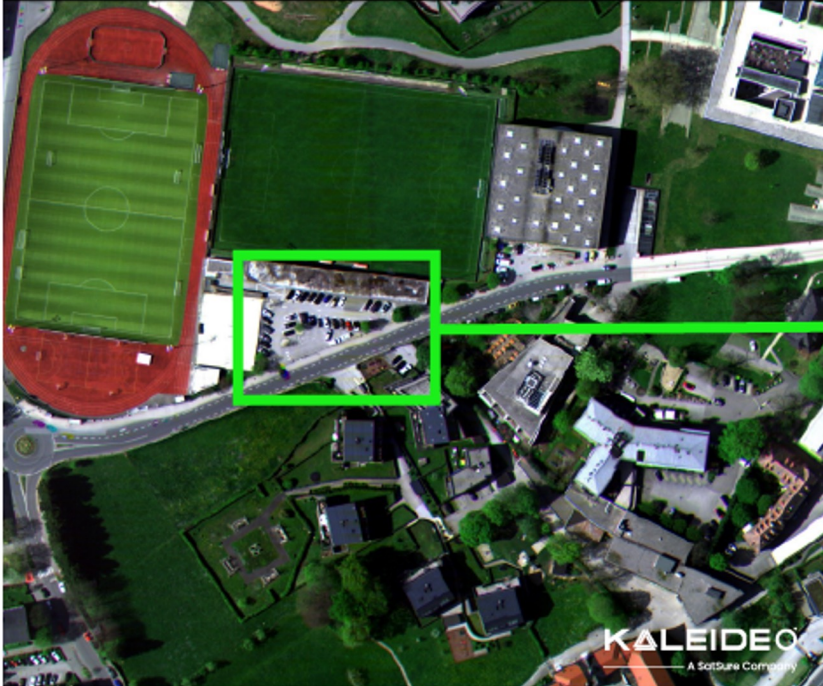


Demonstrated on-orbit



Milestones - Aerial Testing

Post Processed Image



Zoomed-in Image



Resolution: 16cm
Location: Austria (Besides the Alps)



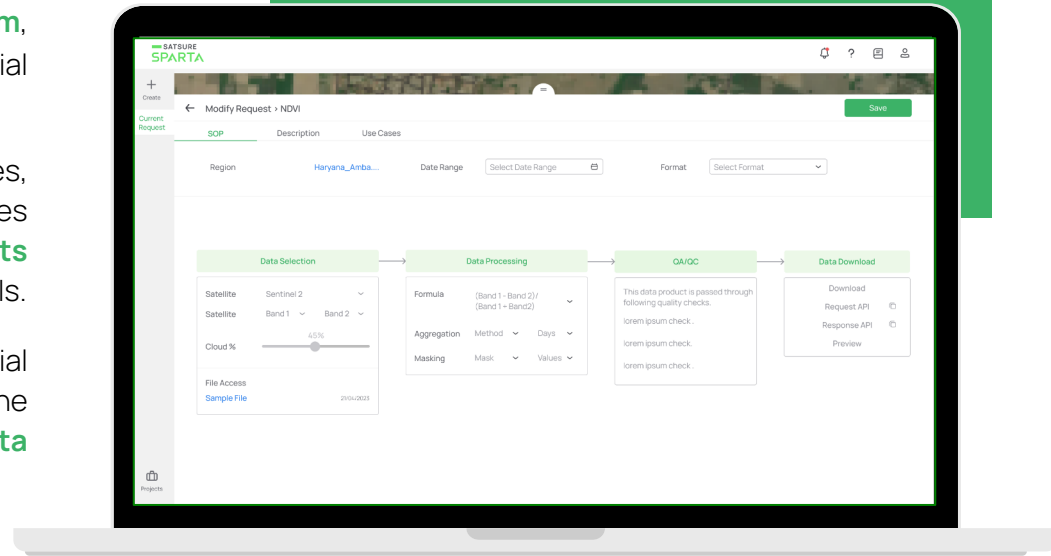
KaleidEO Fleet at a Glance- ARGUS



SatSure Sparta

A one of its kind **Earth observation DataOps platform**, revolutionizes management of enterprise's spatial datasets.

- Seamlessly integrating data from diverse sources, it allows **efficient data processing** and enables generating **application-ready products** accessible to the organization through STAC APIs.
- Provides tools for efficient enterprise level spatial data operations management, while enabling the **optimal IT resource deployment and data quality**.



Key data operations blocks | SatSure Sparta

