



GWFF

GEOSPATIAL WORLD FORUM

[**CLICK TO KNOW MORE**](#)

A photograph of three people in a meeting, overlaid with a blue tint. A woman on the left is pointing at a whiteboard with a marker. A woman in the middle is smiling and looking towards the whiteboard. A man on the right is also smiling and looking towards the whiteboard.

The NATO Core GIS

Introduction

Jose Balsinhas - NATO CI Agency, JISRC GeoMetOc Services

AIM of this presentation

1. Overview of NATO
2. Overview of the NATO Communication and Information Agency (NCIA)
3. The NATO Core GIS
4. Case studies (live maps on the NATO enterprise):
 - Freedom of movement map
 - GeoMetOc
 - Centralized imagery services



NATO

NATO's purpose is to guarantee the freedom and security of its 32 members through political and military means.

POLITICAL - NATO promotes democratic values and enables members to consult and cooperate on defence and security-related issues to solve problems, build trust and, in the long run, prevent conflict.

MILITARY - NATO is committed to the peaceful resolution of disputes. If diplomatic efforts fail, it has the military power to undertake crisis-management operations. These are carried out under the collective defence clause of NATO's founding treaty - Article 5 of the Washington Treaty or under a United Nations mandate, alone or in cooperation





NATO's Communications and Information Agency

- What we do
 - Develop the technical capabilities, with NATO industry, that help NATO maintain peace and project stability
 - Develop, Operate, Defend NATO's information and networks – at forefront of Cyber Security
 - Directly support the Warfighter in Operations
- Scope and Scale
 - Five predicate organizations, **75**-year legacy
 - Formed in 2012, Governed by ASB of 29 Nations
 - **4** Campuses, 30 Locations, 3,000 staff
 - A Combat Support Agency during crisis
 - NATO's link with Industry; 70% outsourced
 - Sponsor-funded; no appropriated funds

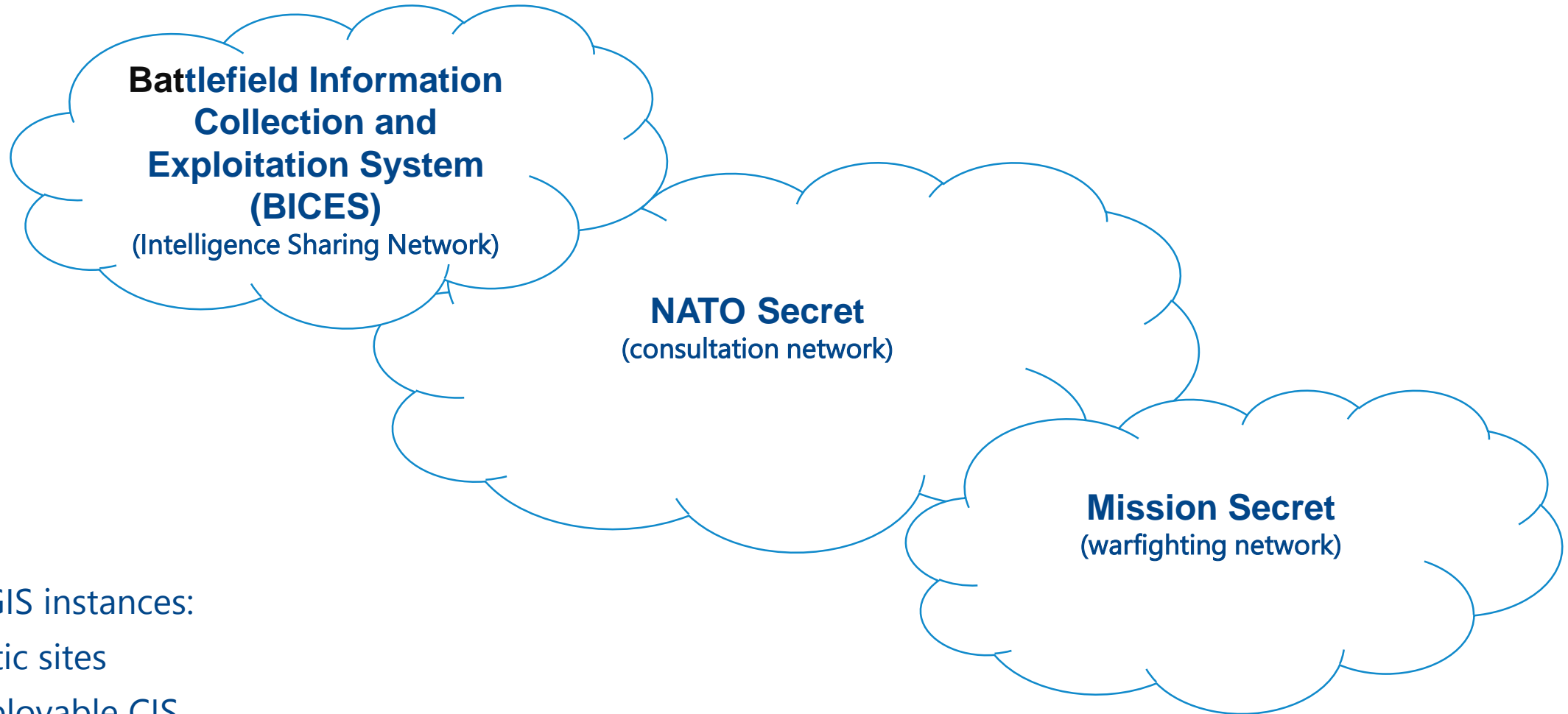


The NATO Core GIS

1. NATO Core GIS is a true enterprise GIS
2. Available across the entire organization (all users, all networks, all sites)
3. Based on COTS Software (Esri)
4. Consumes around 1/3 of all NATO IT resources (e.g. storage, VMs)
5. Core GIS serves NATO since 2010 as a capability

...to manage, analyze and visualize all of NATO's Geographic Information (GI)

The NATO enterprise



Core GIS instances:

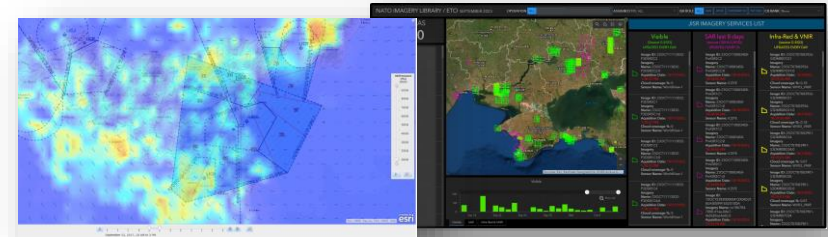
16 static sites

16 deployable CIS

Core GIS utilisation

Non-Geo services Dashboards, etc.

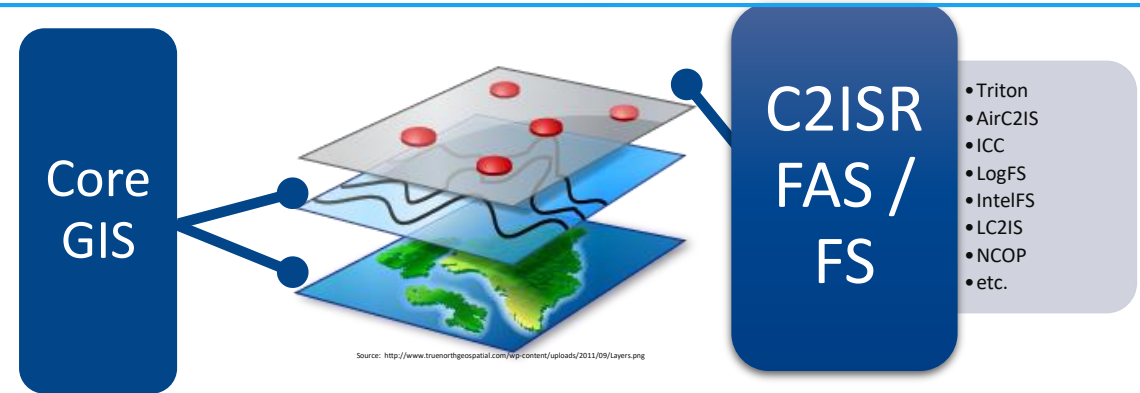
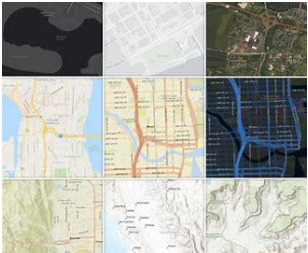
(Data management, discovery, analysis & visualization)



Geo-Services

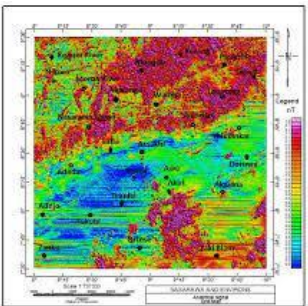
Geospatial services

(Provide GI to other C4ISR systems through web services interfaces)

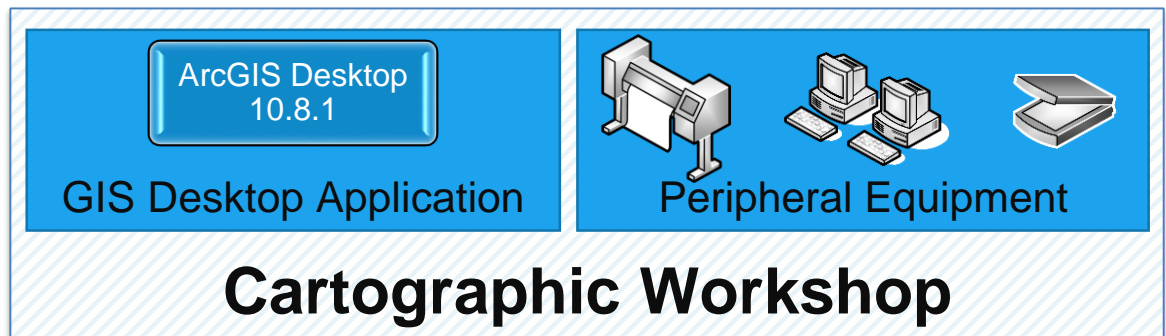


Geography services

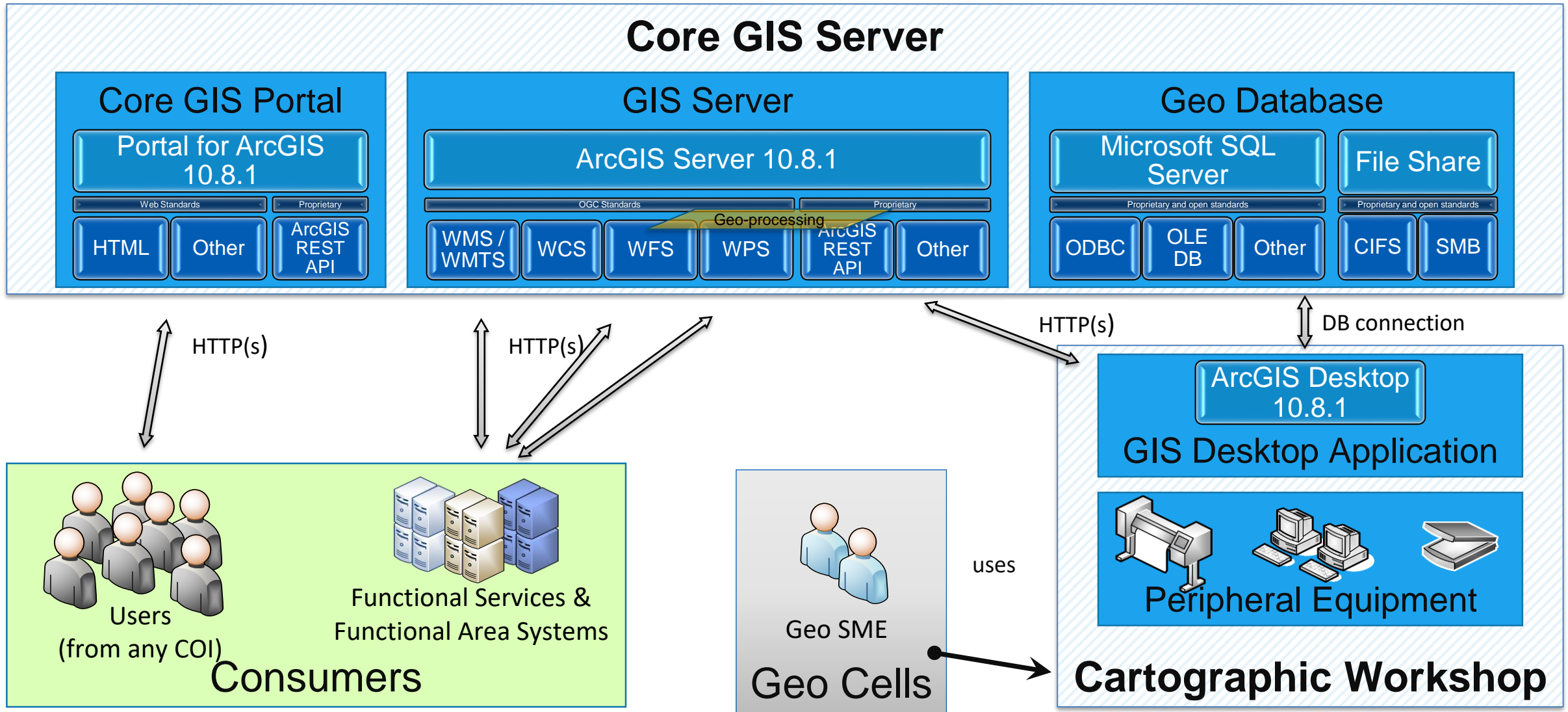
(Capability for Geo/GIS SMEs for the creation, modification, analysis, management and dissemination of geospatial data)



Geo SME

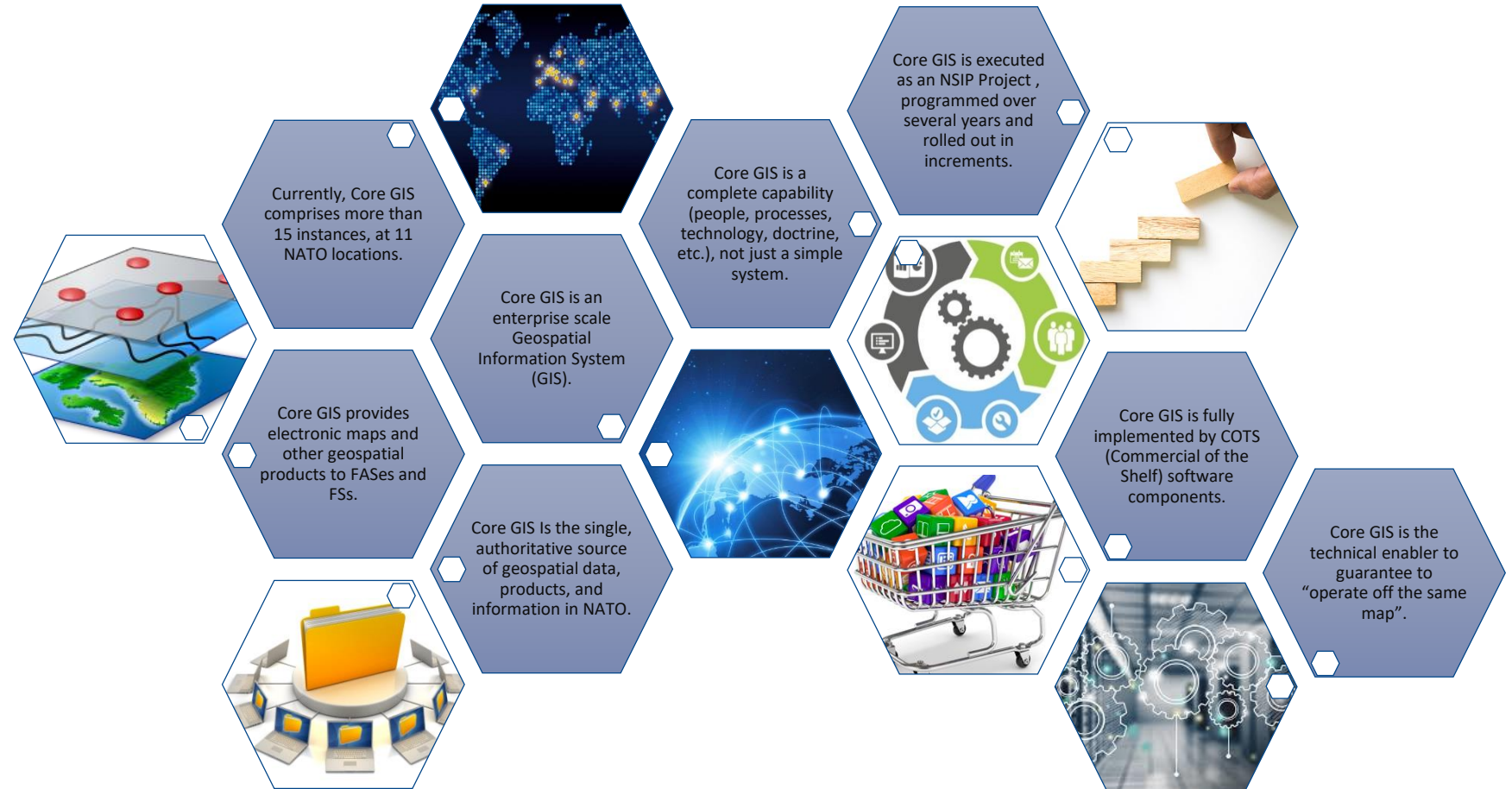


Core GIS Conceptual Architecture



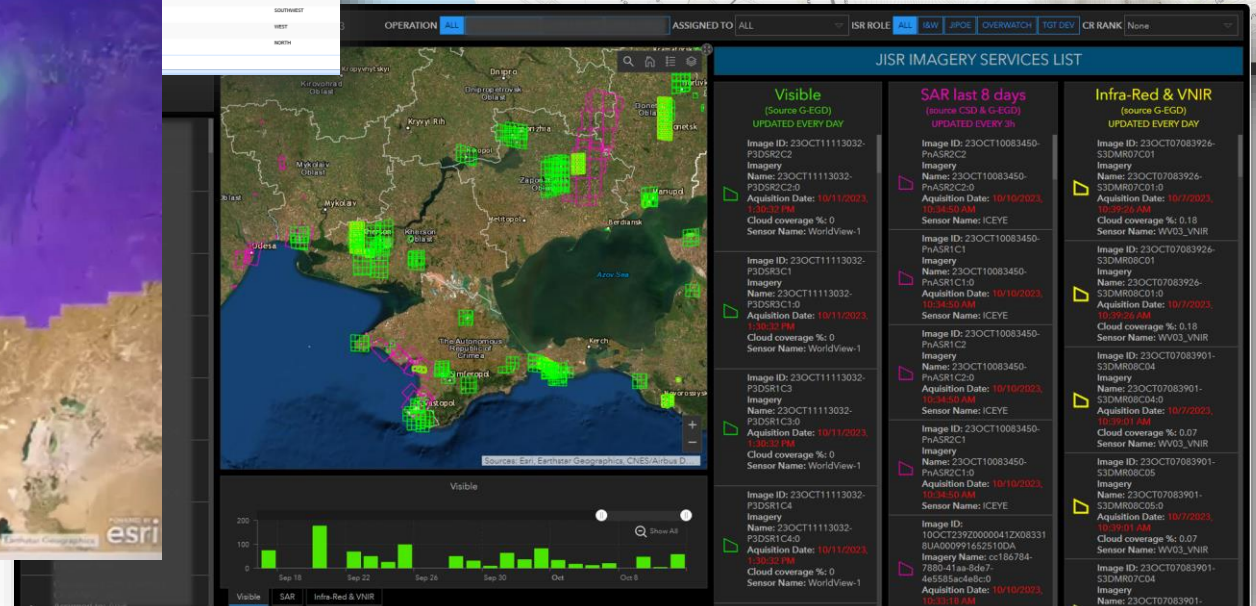
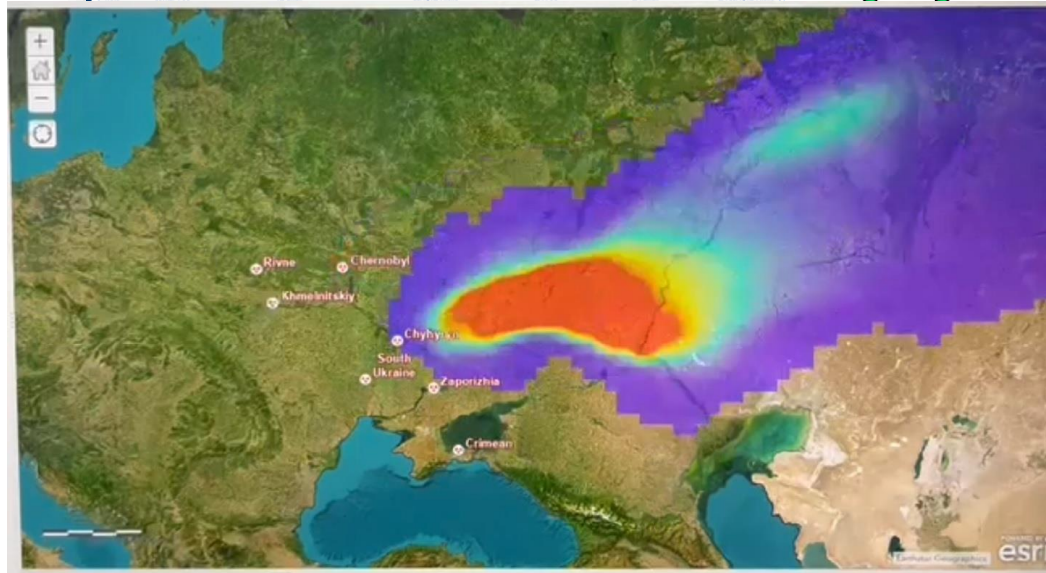
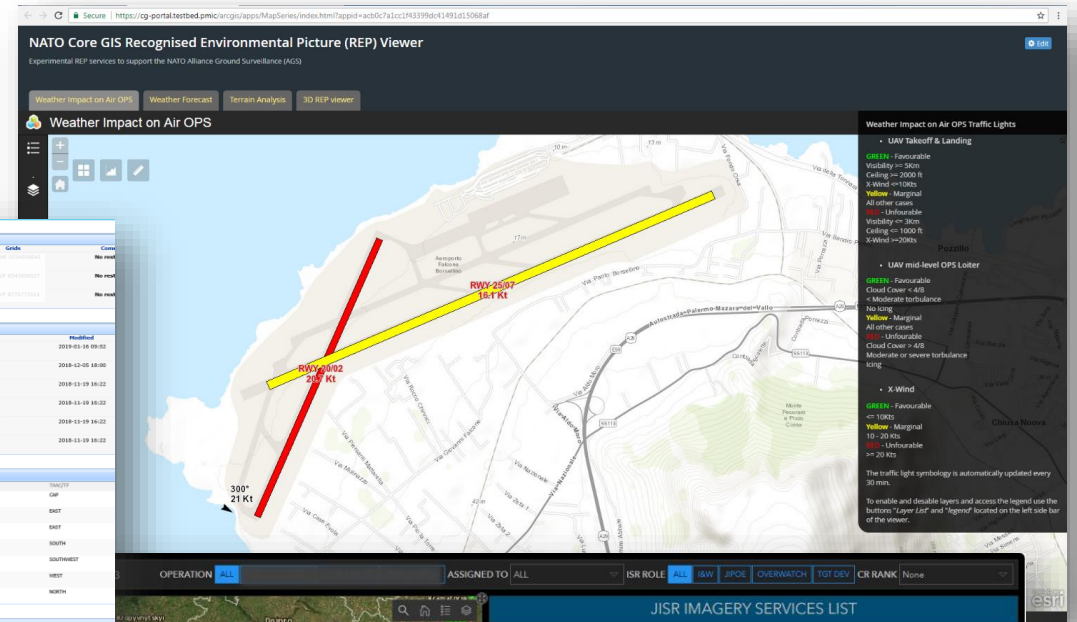
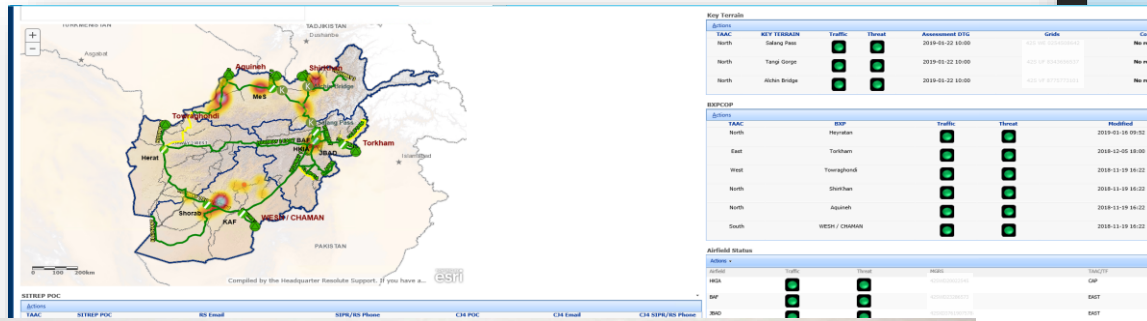
NATO Core GIS is much more than that...

D = Doctrine
 O = Organization
 T = Training
 M = Material
 L = Leadership
 P = Personnel
 F = Facility
 I = Interoperability



New Core GIS based services

Non-Geo services Dashboards, etc.
(data management, discovery, analysis & Visualization)



Key take away

- Core GIS is a key enabler for C4ISR
- NATO Core GIS can access, manage, analyze and visualize most military domain data
- Core GIS supports agile & state-of-the-art capability development
- Core GIS is a true enterprise implementation
- Core GIS will be continuously up-graded (24 month)

Questions





Contact us

E-mail jose.balsinhas@ncia.nato.int

Phone [+31 70 374 3677](tel:+31703743677)