



# GWFF

GEOSPATIAL WORLD FORUM

[CLICK TO KNOW MORE](#)

Geospatial World Forum 2024  
United States Pavilion Panel Display  
Department of Veterans Affairs (VA)

10 April 2024

# Department of Veterans Affairs (VA) Geospatial Use Cases

## VETERANS AFFAIRS GIS STRATEGY & INTEGRATION WITH POLICY

- VA Enterprise GIS Strategy
- VA State Policy Profiles

## INTEGRATING GIS ENTERPRISE-WIDE

- GIS Modeling to reduce data duplication from ~170M addresses to ~40M addresses
- VA Integrated Operations Center
- Risk & Hazard Exposure Tool
- National Surveillance Tool for Emergency Management
- Tracking of Information Technology resources for Emergency Management responses
- Executive Travel of Senior Executive Leadership

## VETERAN HEALTH ADMINISTRATION – PEOPLE (Veterans and Workforce)

- VHA Planner's Portal: Data Viewer
- VHA Planner's Portal: Population Calculator
- Staff Tracking for Data Analytics

## VETERAN HEALTH ADMINISTRATION – PRACTICE (Services)

- Health Equity: VHA Veterans Geography of Opportunity Tool
- Dentistry: Analysis of Utilization & Quality Indicators
- Spinal Cord Injury and Disorders (SCI/D): Telehealth Utilization
- Access to Care: Cardiology & Community Care
- Access: Potential Future Appointments Utilization

## VETERAN HEALTH ADMINISTRATION – PLACE (Infrastructure/Facilities)

- National Facility Locator: Network of providers
- VHA Planner's Portal: New Facility Scenario Builder Application
- GIS Mapping Inside VA Medical Facilities
- GIS Mapping of VA Medical Center Campus Utilities
- Leveraging GIS for Market Area Assessments

## NATIONAL CEMETERY ADMINISTRATION

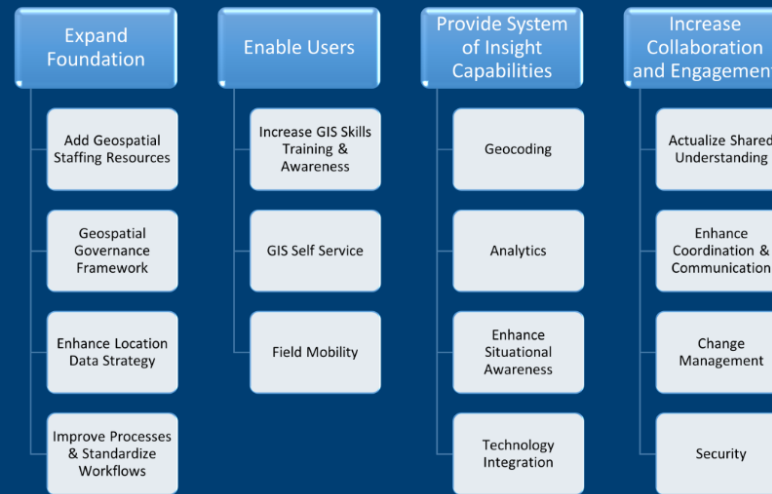
- Gravestone level detail

# GIS STRATEGY AND INTEGRATION WITH POLICY

# VA Enterprise GIS Strategy

## Current Use of GIS & Desired Future State of GIS

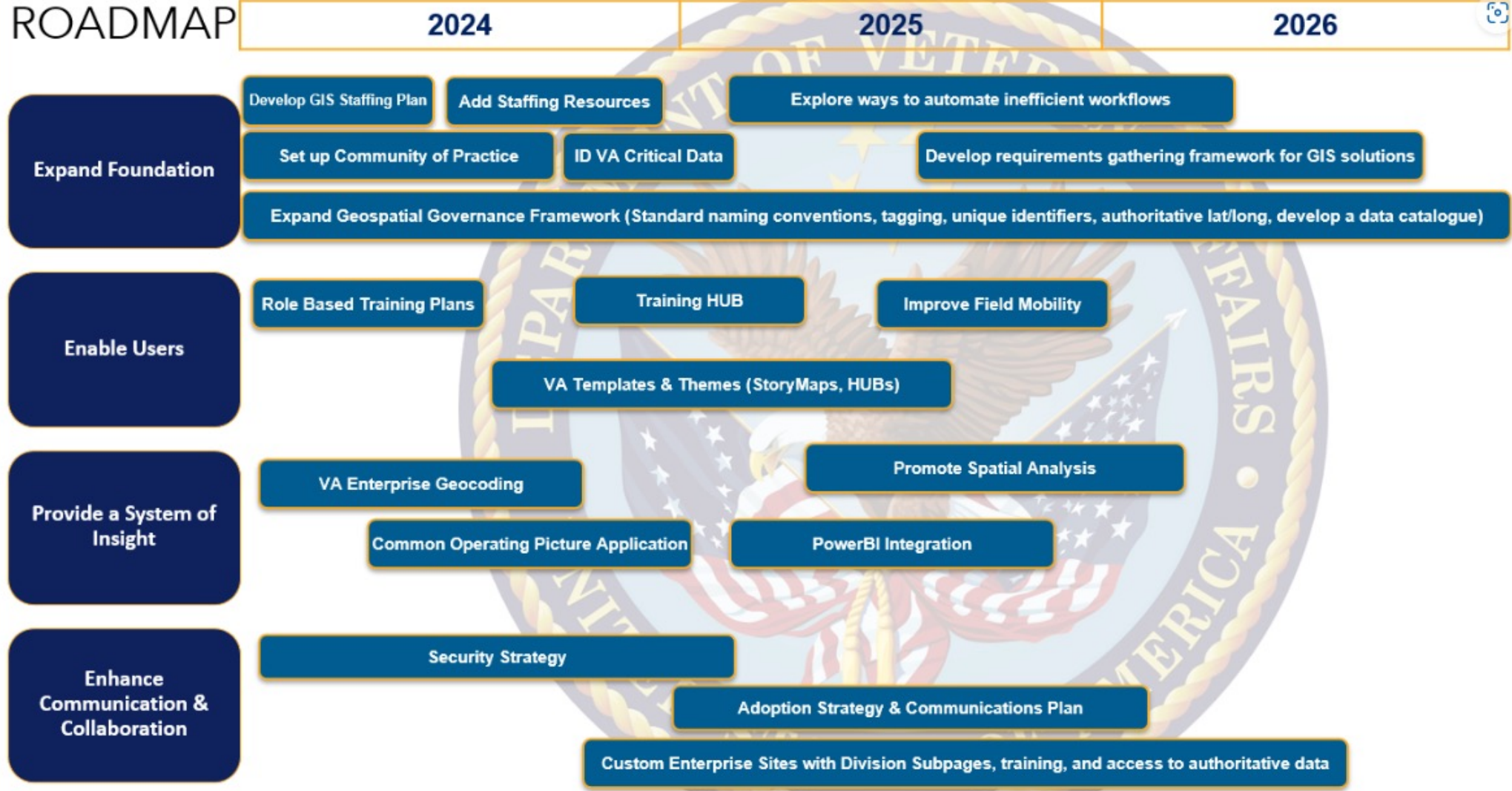
Data collected included a self assessment of current use of spatial data and technology in each office and/or Administration that participated in the workshop series. We referenced the ArcGIS 9 Common Patterns of Use to understand how much GIS is implemented in the department through a self-ranking exercise. We then used the patterns of practice to guide which spatial technology each division was most interested in developing for their future state.



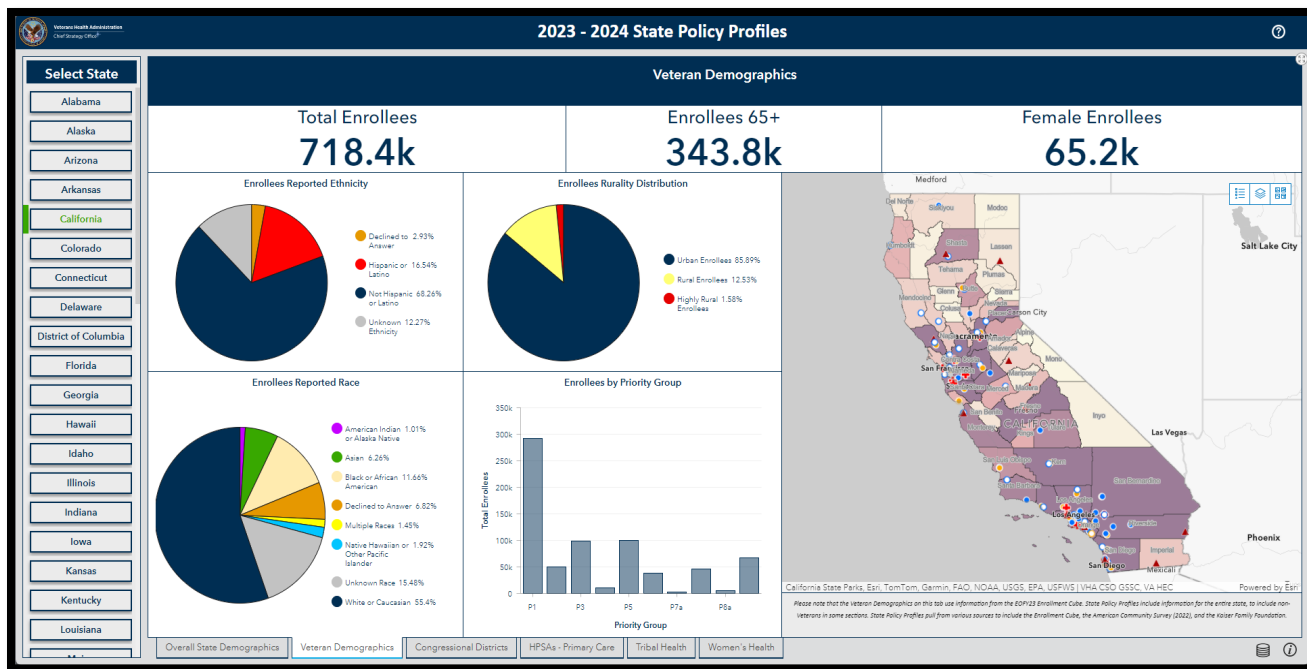
VA Themes & Actions

- Published first ever VA Spatial Strategy in 2023 as a part of the VA Data Strategy.
- Geospatial Mission: To integrate data-driven strategic level geospatial analyses for effective decision making and innovative solutions through close collaboration with business partners to create the best experience for all Veterans.
- GIS strategy is organized around a set of 4 themes and 15 Actions.

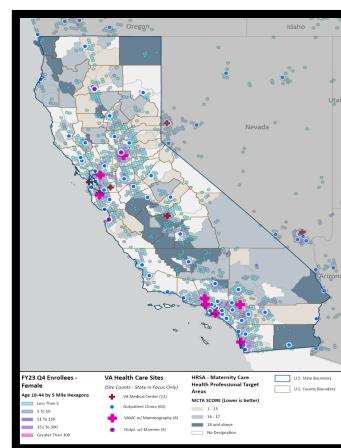
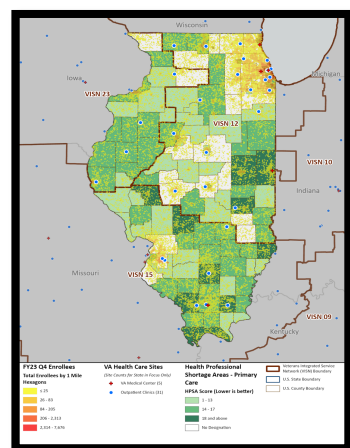
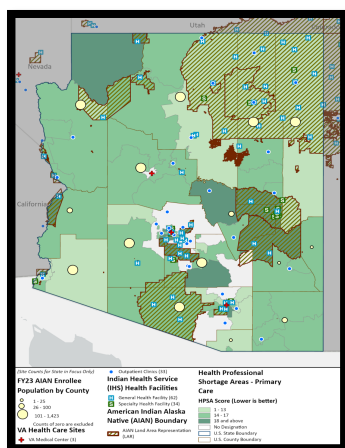
# VA Enterprise GIS Strategy



# Integrating Policy with GIS: 2023 – 2024 VHA State Policy Profiles



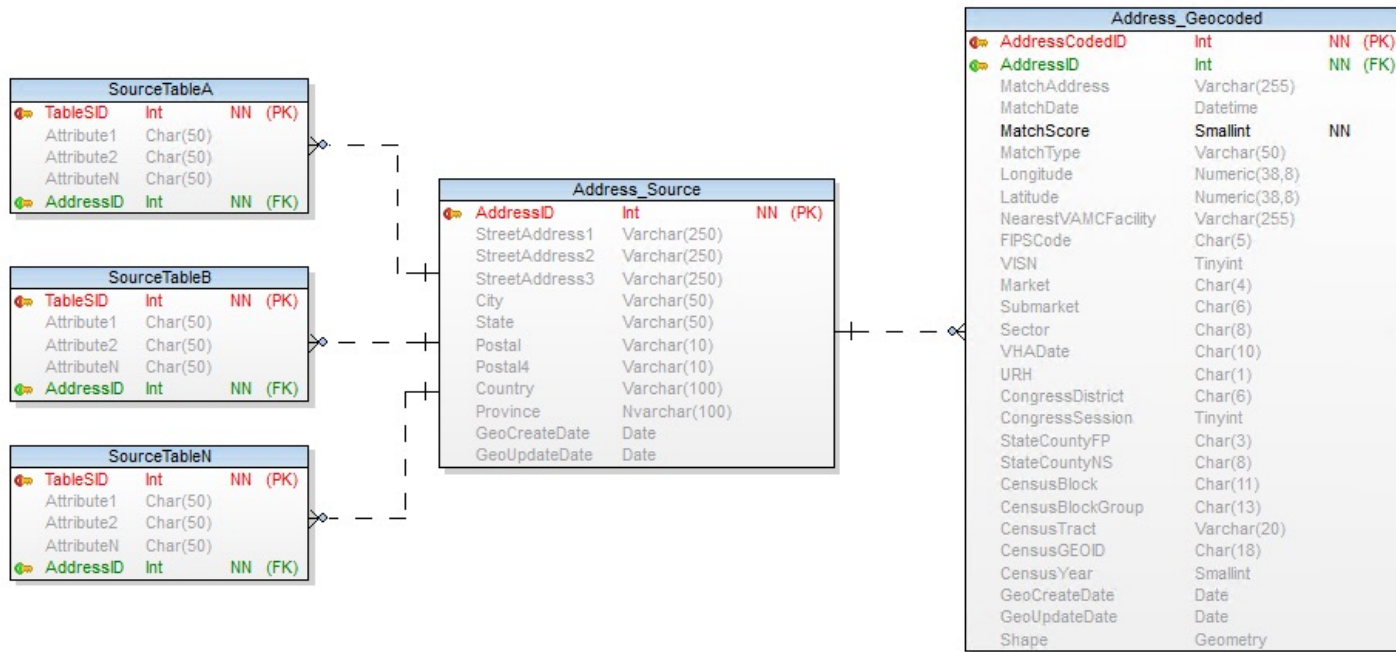
- Integrated GIS with Policy Analysis to provide GIS support for Veterans Health Administration's (VHA) annual State Policy Profile reports that are published for each of the 50 States and the District of Columbia.
- Created 6 static maps for each report totaling 306 static maps.
- Developed an interactive web GIS dashboard to allow for a dynamic and consolidated view of all the State Policy Profiles.



# ENTERPRISE-WIDE VA GIS APPLICATIONS



# Enterprise-Wide GIS: Standards for Modeling of Geospatial Data

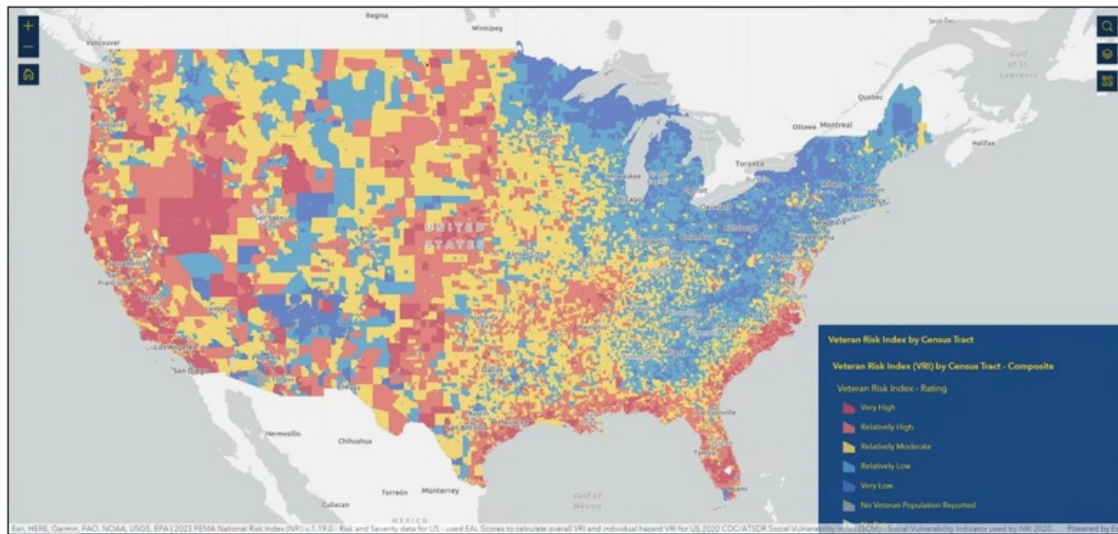
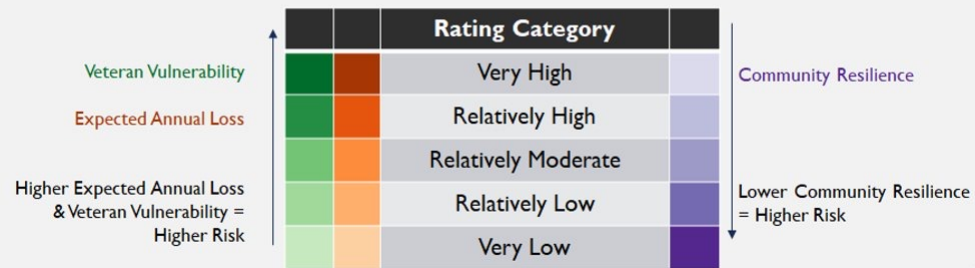


- Using best practices and normalization to:
  - Reduce data duplication & decrease storage from ~170M to 40M addresses
  - Increase query performance and eliminate bottlenecks
  - Allow for easier integration with other data sources and models
  - Streamline bulk data updates



# Enterprise-Wide GIS: VA Risk and Hazard Toolkit

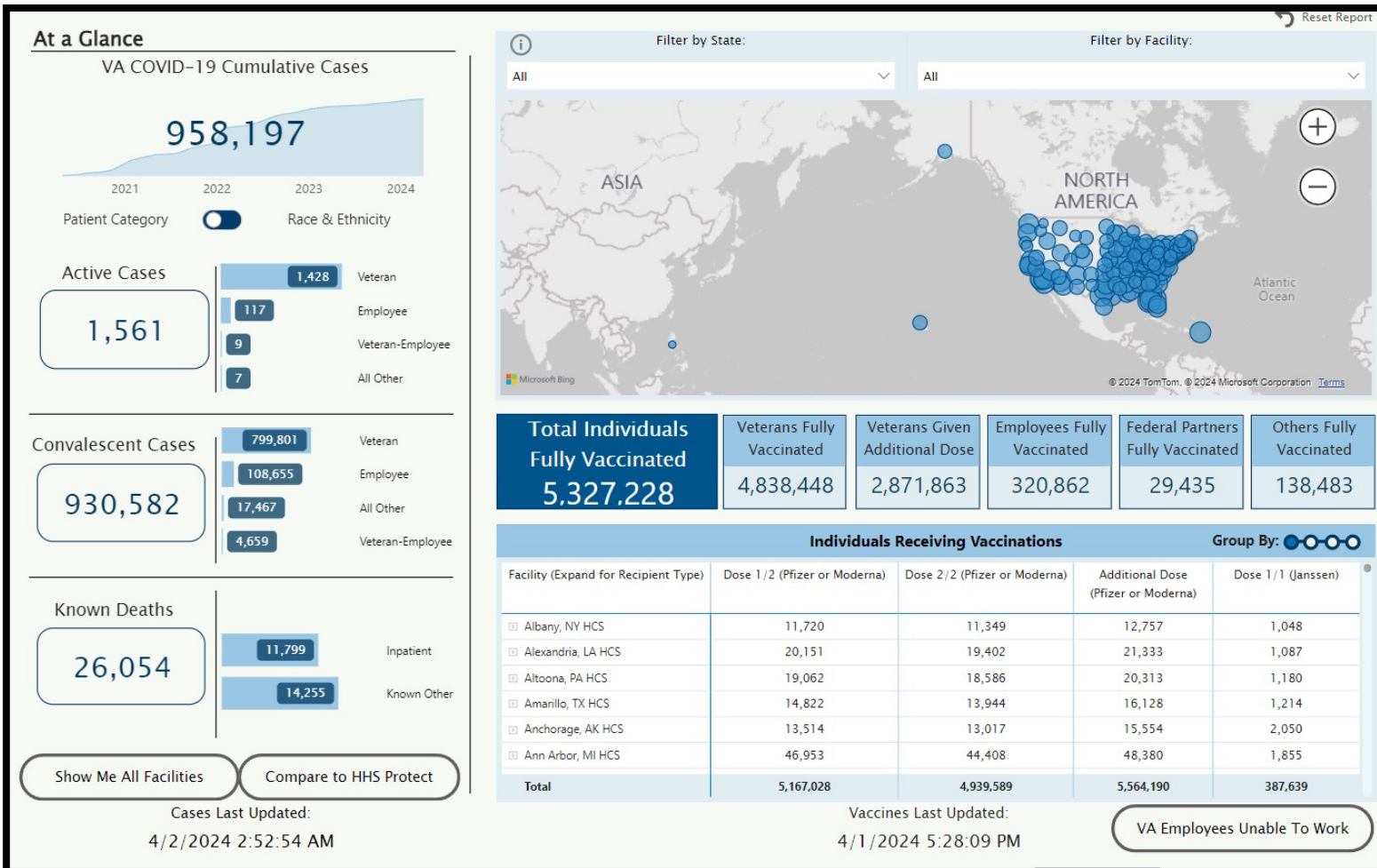
$$\text{Veteran Risk Index (VRI)} = \text{Expected Annual Loss (EAL)} \times f\left(\frac{\text{Veteran Vulnerability}}{\text{Community Resilience}}\right)$$



- An online data analysis & visualization application available to Department of Veterans Affairs (VA) staff that enables a shared understanding of risk among VA leadership and staff nationwide.

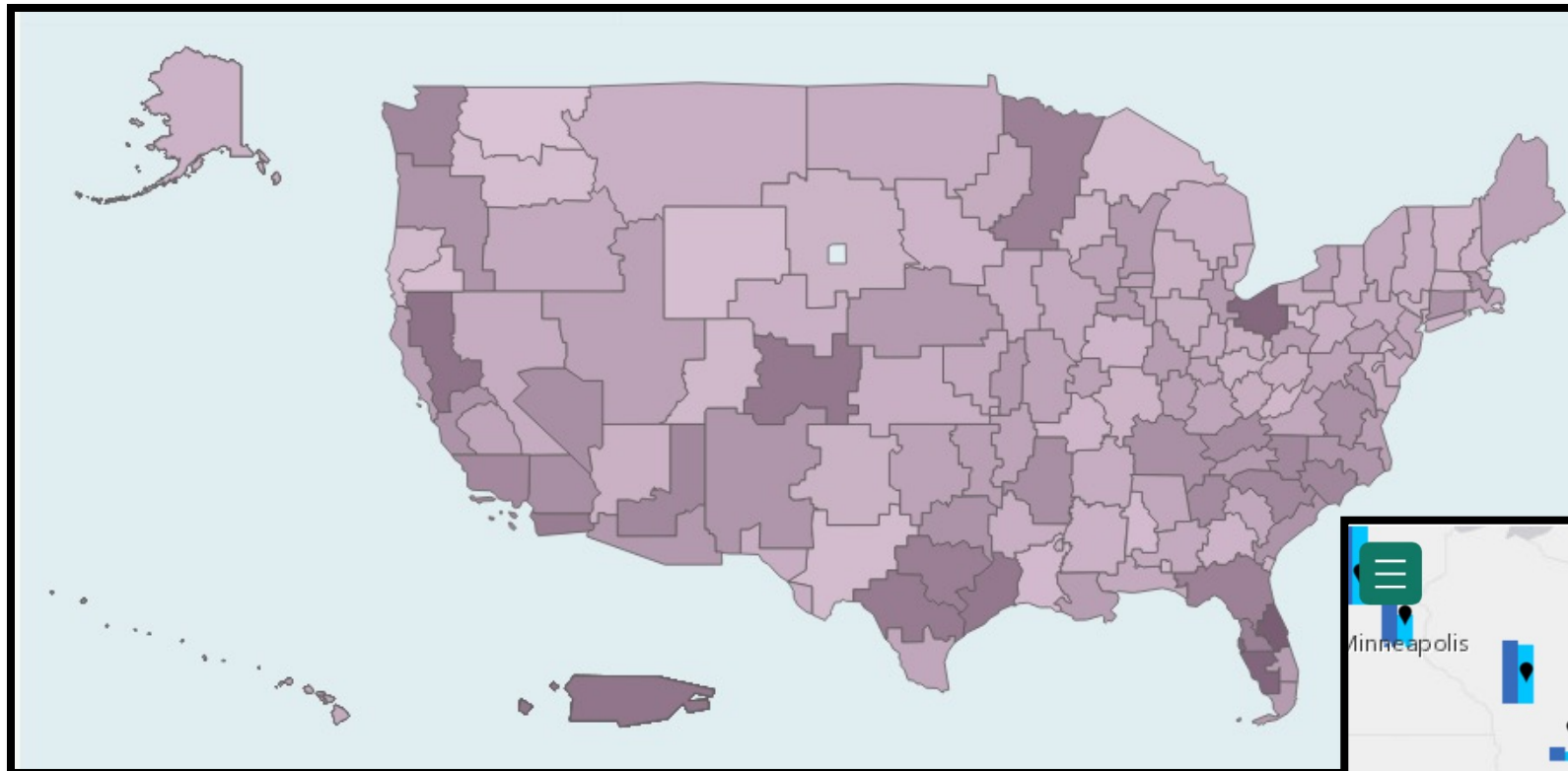


# Enterprise-Wide GIS: VA COVID-19 National Summary

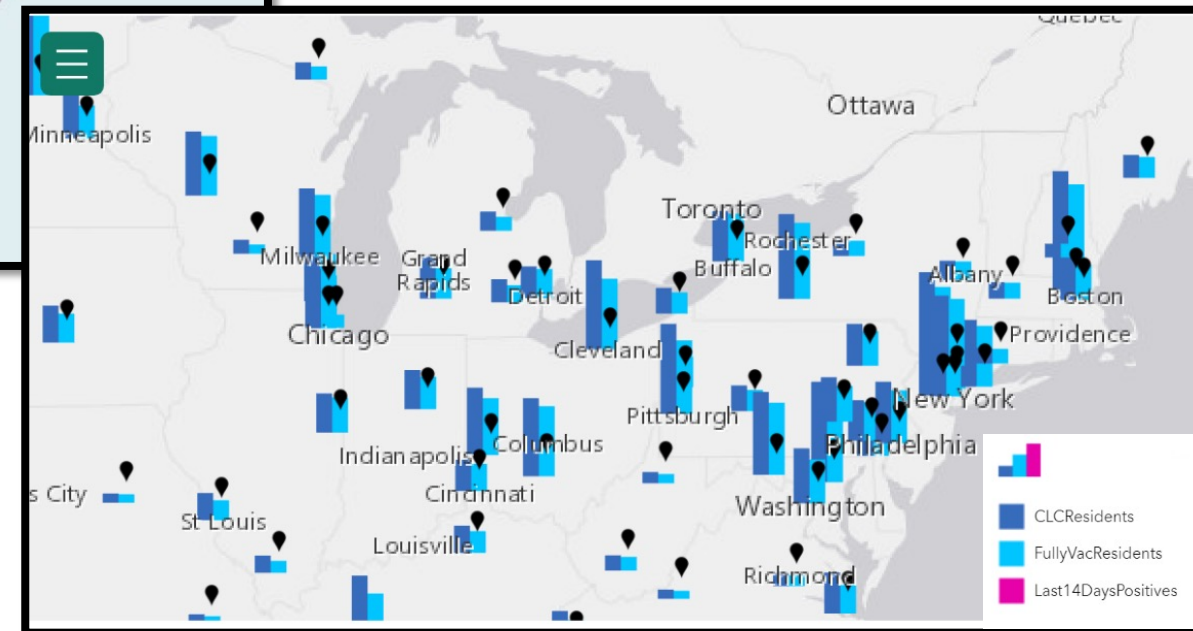


- This report summarizes what we know about the status of COVID-19 patients who have been tested or treated at VA facilities.
- Available to the public at: [https://www.accesstocare.va.gov/H\\_ealthcare/COVID19NationalSummary](https://www.accesstocare.va.gov/H_ealthcare/COVID19NationalSummary)

# Enterprise-Wide GIS: VA National Surveillance Tool (NST)



- (Left) Tracking Respiratory Viruses of COVID-19 as of 2022.
- (Below) Tracking community level of COVID-19 positive and vaccination.



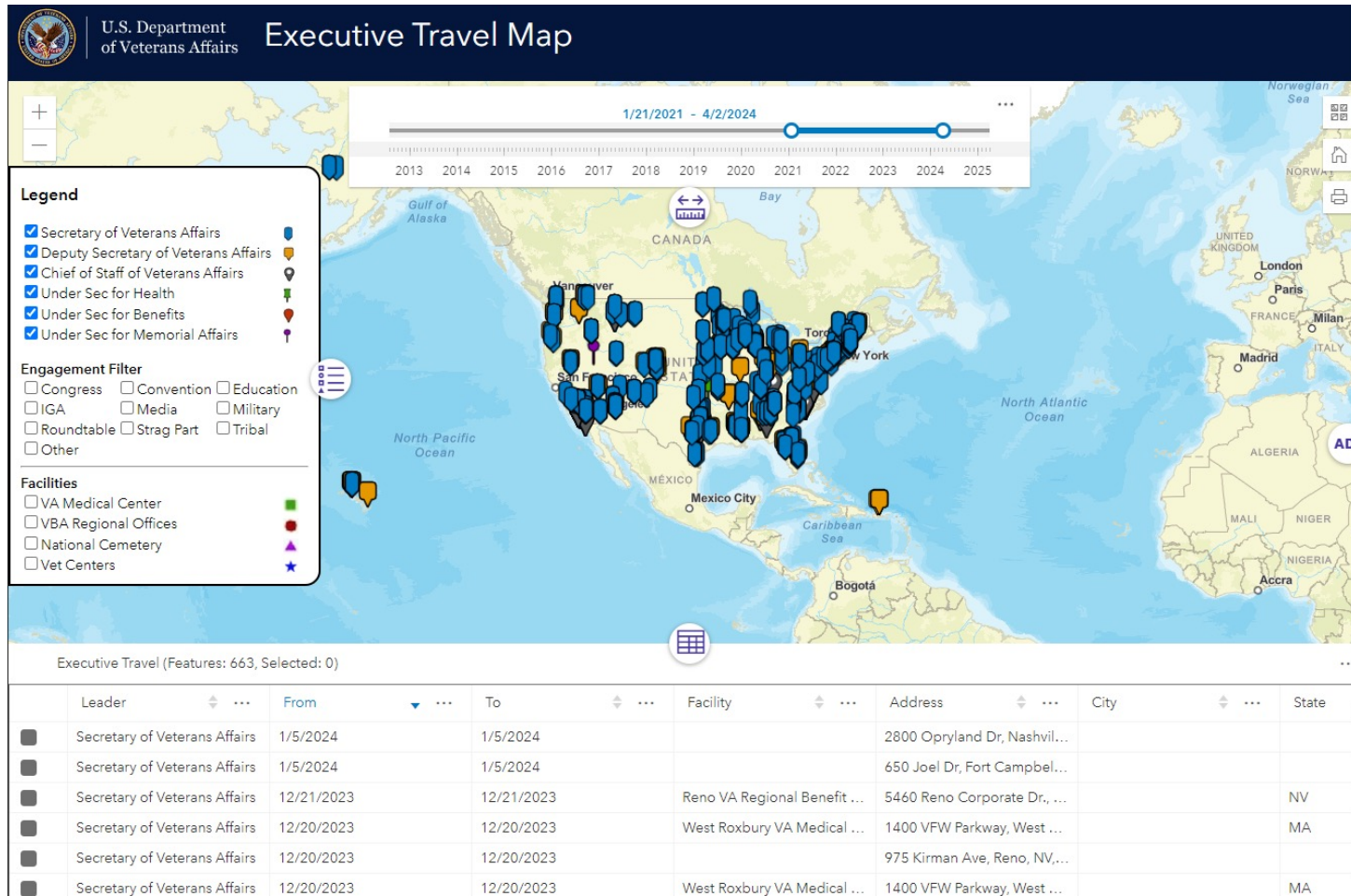
The Veterans Affairs (VA) National Surveillance Tool (NST), developed under the auspices of the VA Director of Biosurveillance, is a collaborative effort between numerous offices from VA, Veterans Health Administration (VHA), and the Office of Information and Technology (OIT). The COVID-19 NST is intended to help VA Leadership and Staff make faster decisions about testing criteria, bed capacity, and overall patient care. The NST is transitioning to seasonal reporting and monitoring of high consequence pathogens.

# Information Technology (IT) Resources Tracking

- Real time tracking of IT resources with the effect of weather, wildfires, and other events that map impact operations within the VA.



# Enterprise-Wide GIS: VA Senior Executive Travel

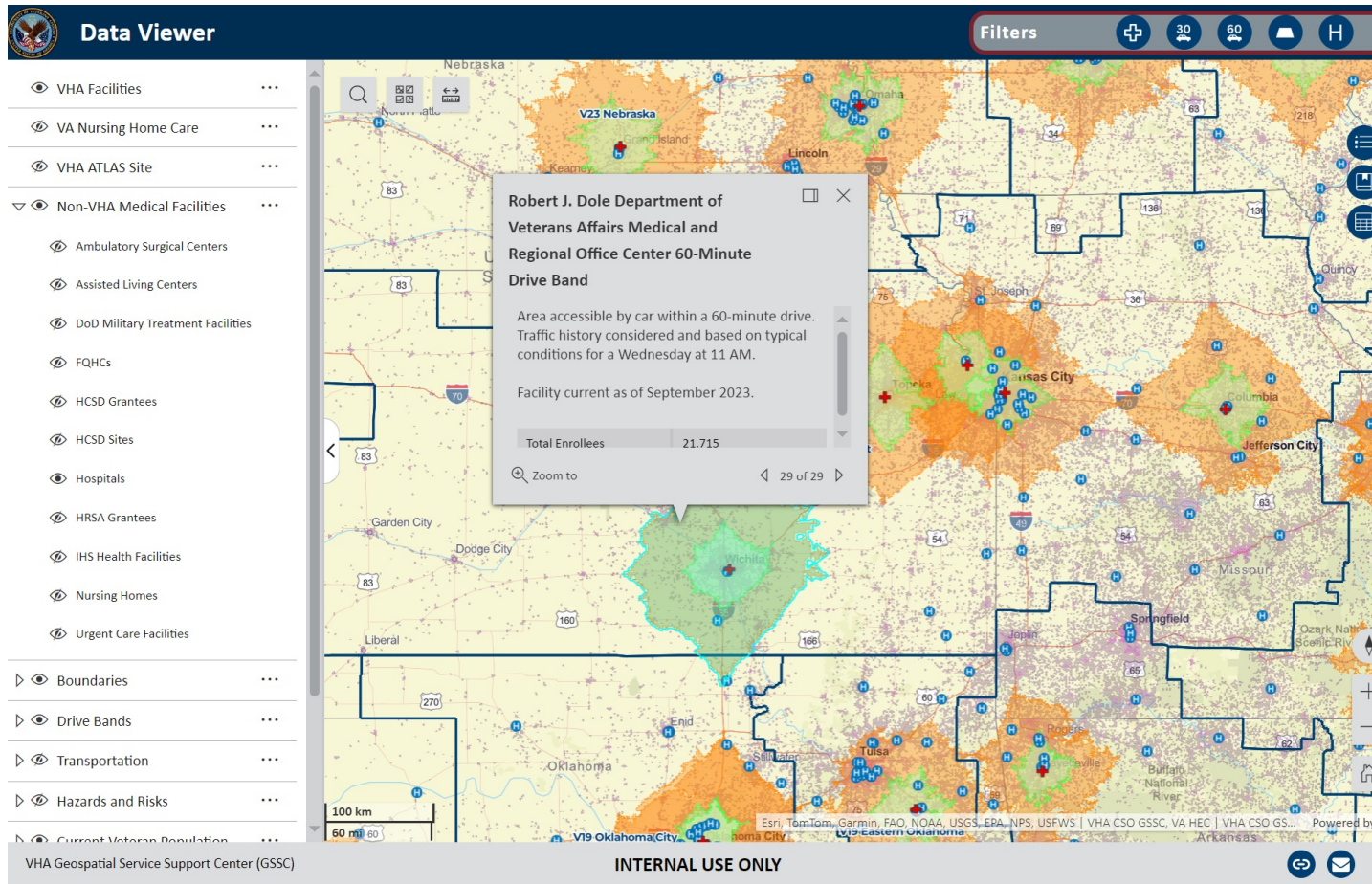


- Tracks the travel patterns of the top 6 VA officials.
  - Identifies areas with little to no travel
  - Enhances Senior Executive Leader engagement with Veterans and Staff at the local level
- Allows filtering on interactions with various types of groups.
- Standardizes travel records across senior leaders.

# HEALTHCARE ADMINISTRATION - PEOPLE



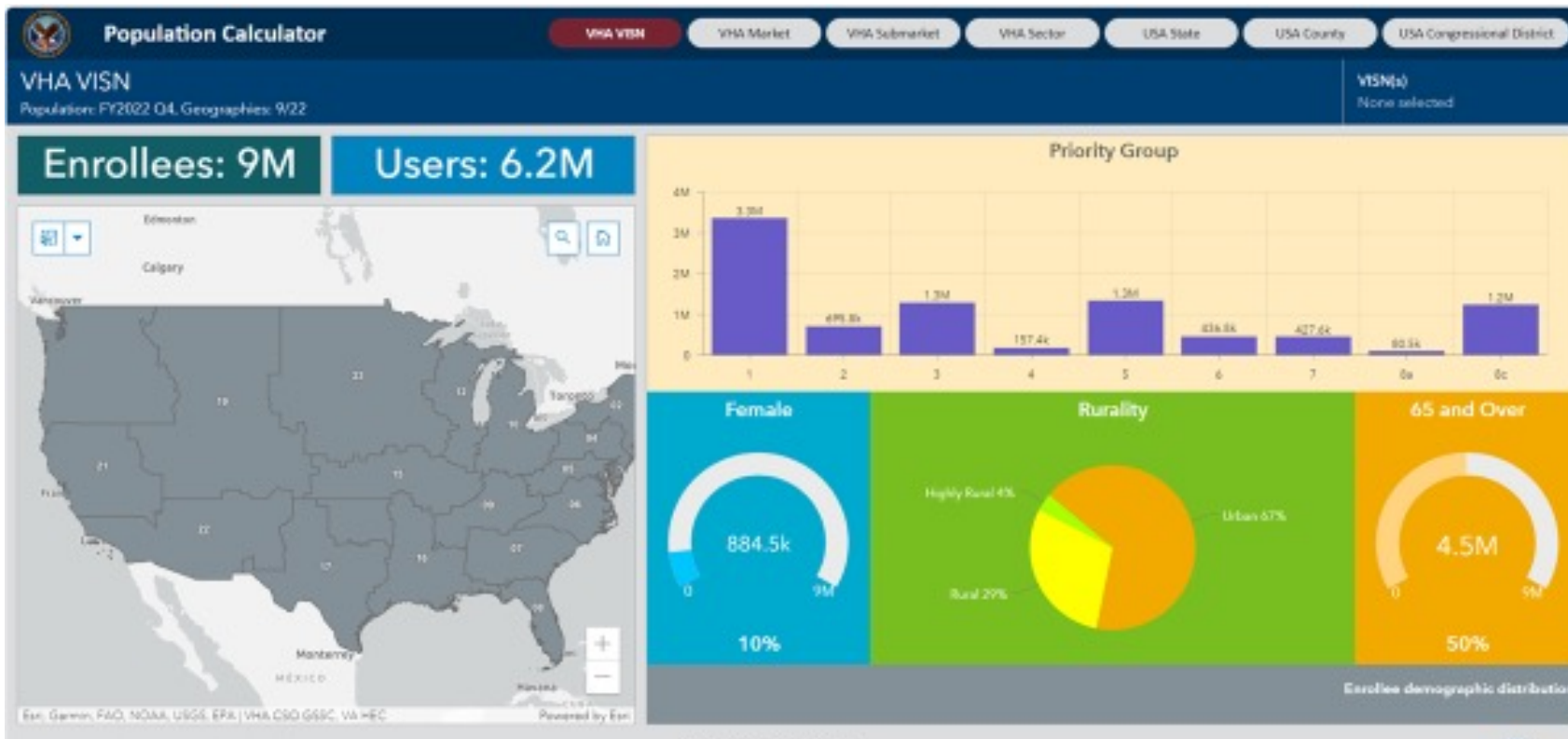
# VHA GIS Planning Portal: Data Viewer Application



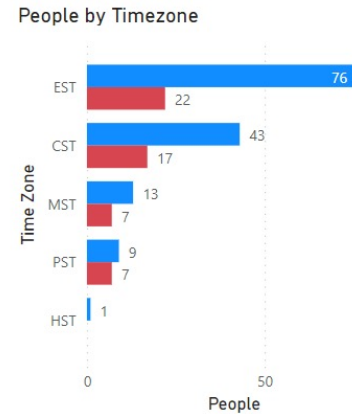
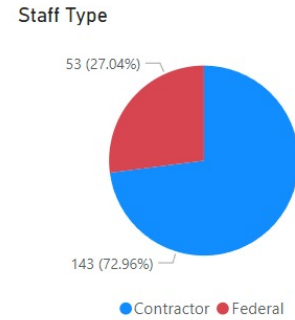
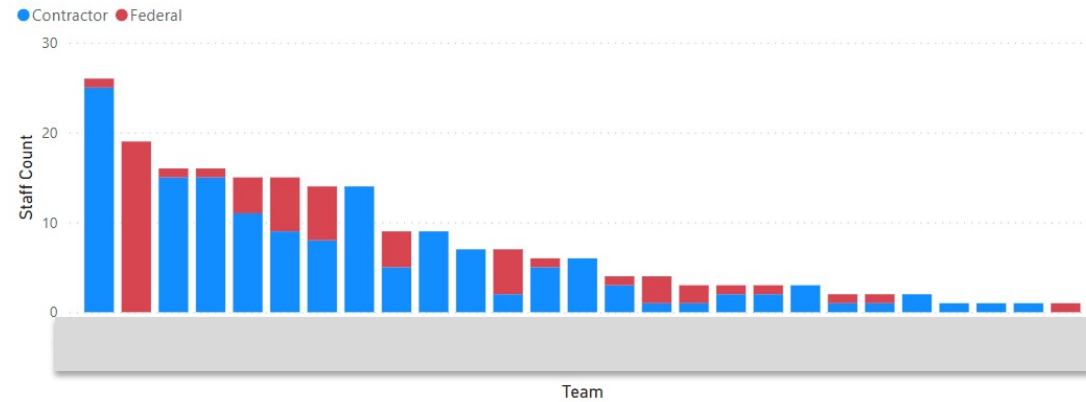
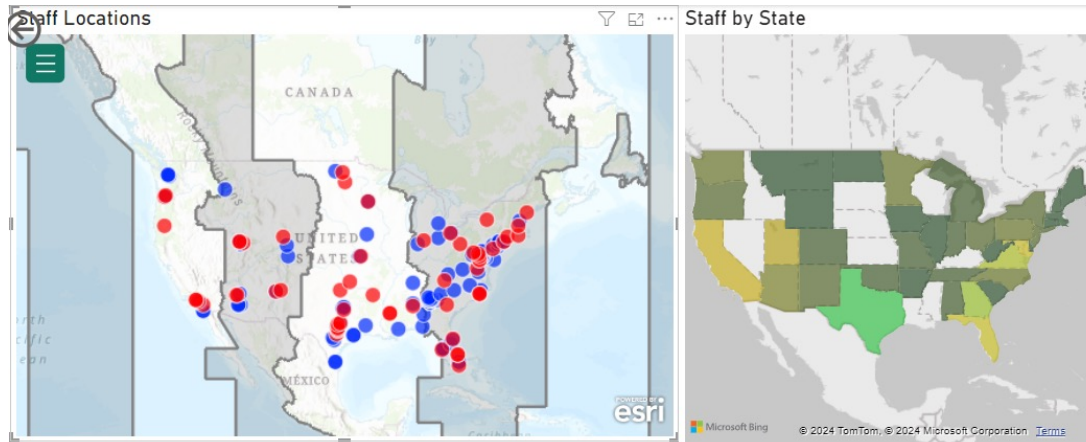
- Allows VHA Planners the ability to view a variety of decision-making data on an interactive mapping application.
- Incorporates key datasets used by VHA Planners to assess healthcare at the Enterprise-wide strategic level down to the healthcare facility level.
- Includes Veteran enrollee population within a healthcare market to include all healthcare facilities, and existing facility drive time coverage.

# VHA GIS Planner's Portal: Population Calculator

- GIS analysis application developed to provide VHA Planners current Veteran population data to include enrollment, users, and key demographics.
- Provides different views of the Veteran population from multiple levels to include Sub-Market areas up through the Enterprise-Wide level; and by, State, County, and Congressional District boundaries.



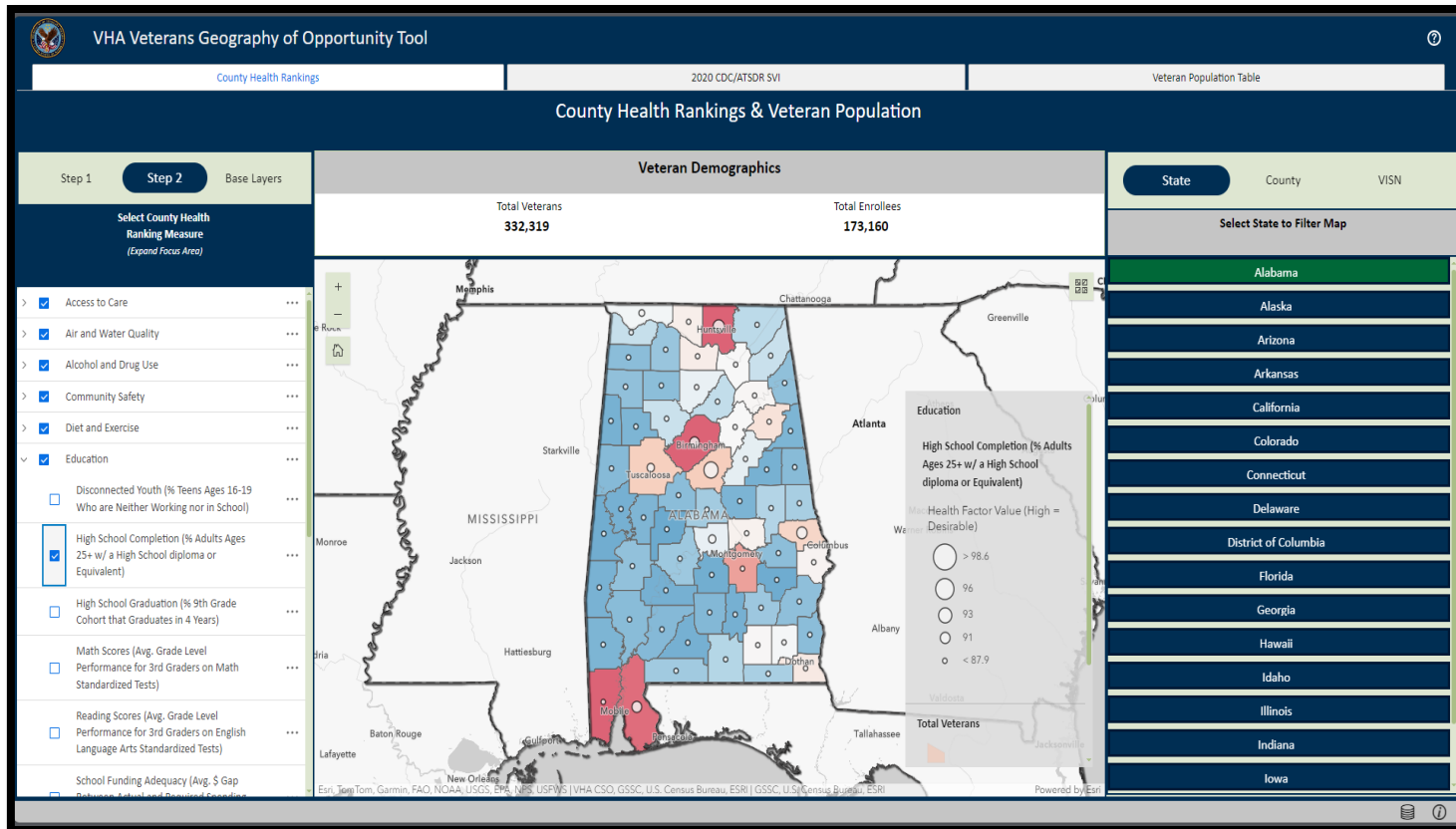
# Staff Tracking



- Identify patterns of staff and locations
- Allow for on-demand filtering
- Integration into non-GIS software such as Power BI

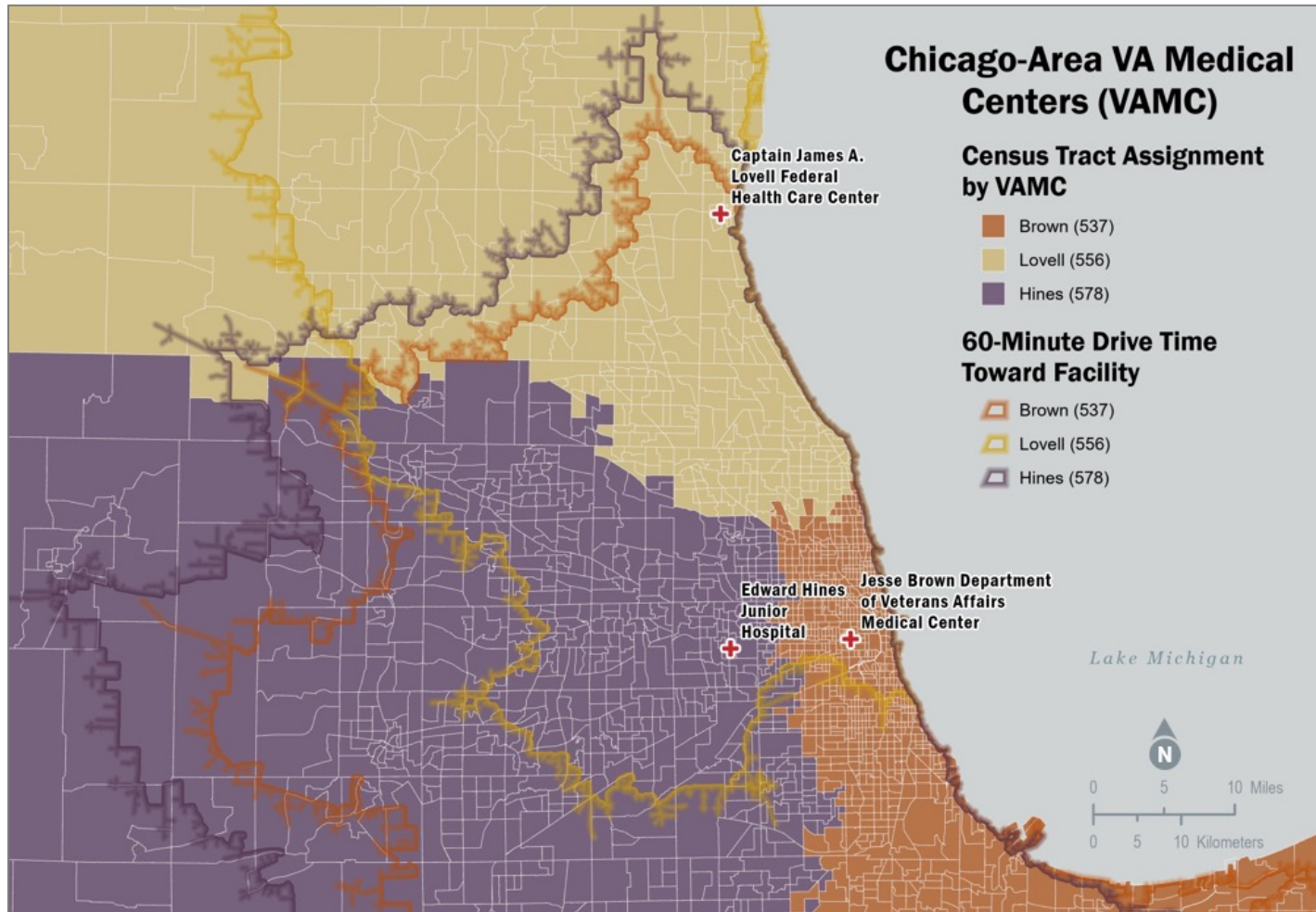
# HEALTHCARE ADMINISTRATION - PRACTICE

# Health Equity: VHA Veterans Geography of Opportunity Tool



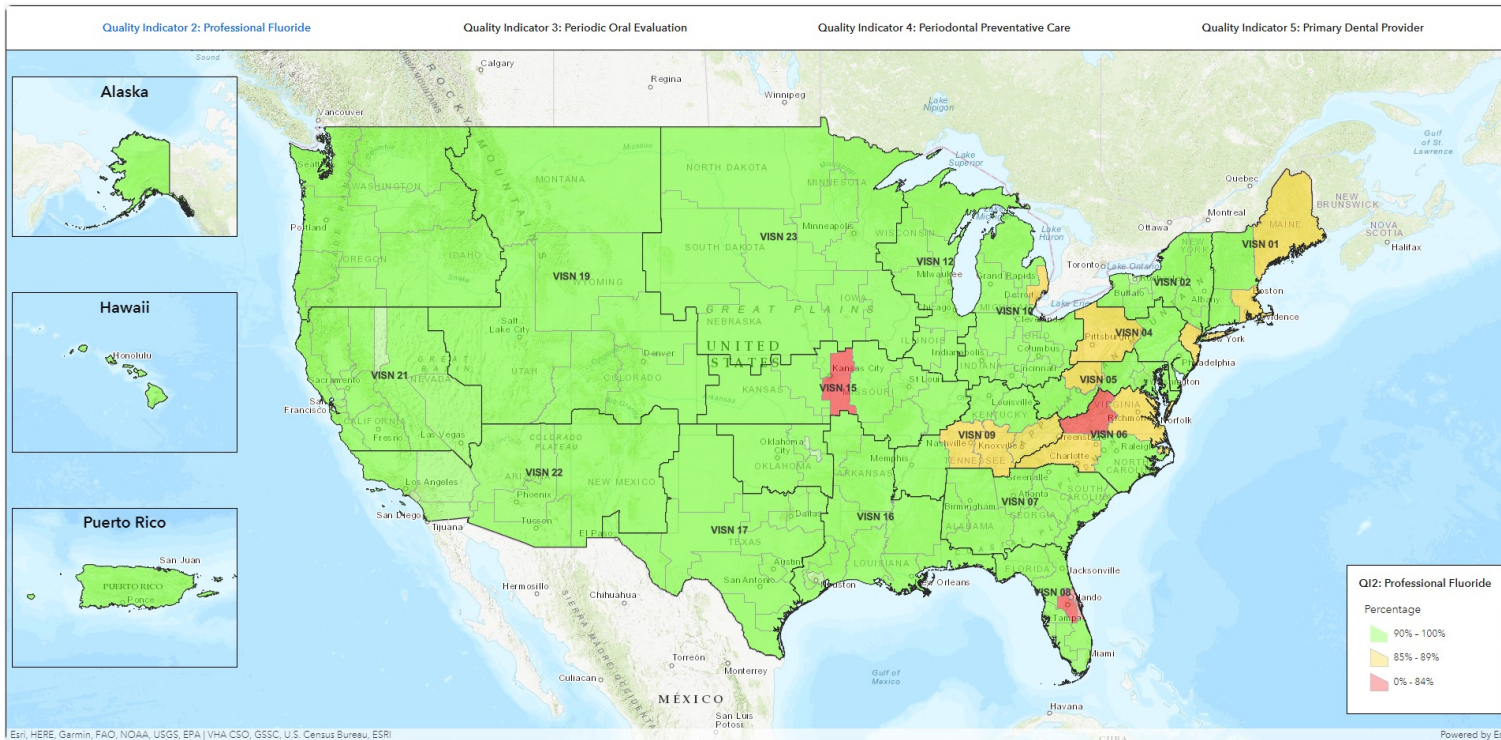
- GIS was integrated in the VHA Office of Health Equity to develop the VHA Veterans Geography of Opportunity Tool.
- This interactive web GIS application combines county level veteran population and VHA enrollee data with open-source health and vulnerability indicators, such as the County Health Rankings and 2020 CDC/ATSDR Social Vulnerability Index.

# Dental: Current and Future Utilization

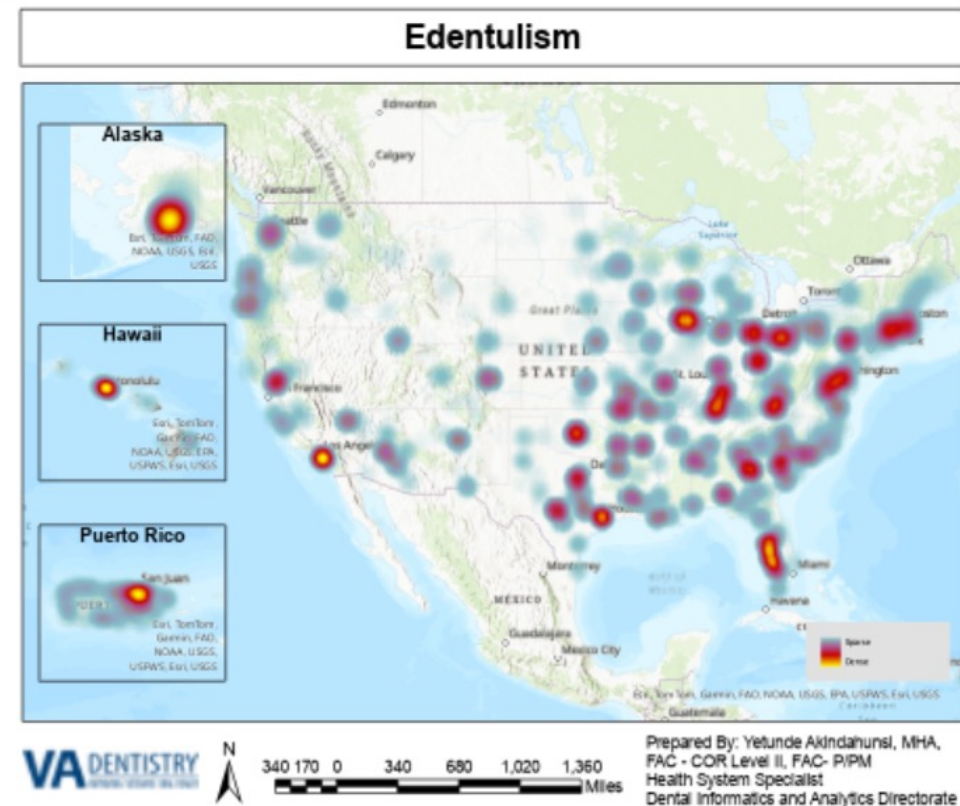


- GIS was integrated in the VHA Office of Dentistry to allocate census tracts to facilities based on dental care utilization in the previous fiscal year.
- This analysis yielded distinct geographic patterns in facility utilization, due to factors such as distance and public transit dependence.
- Using census tracts as opposed to units such as counties allows the Office of Dentistry to more accurately estimate future utilization and demand for providers and equipment.

# Dental Quality Indicators

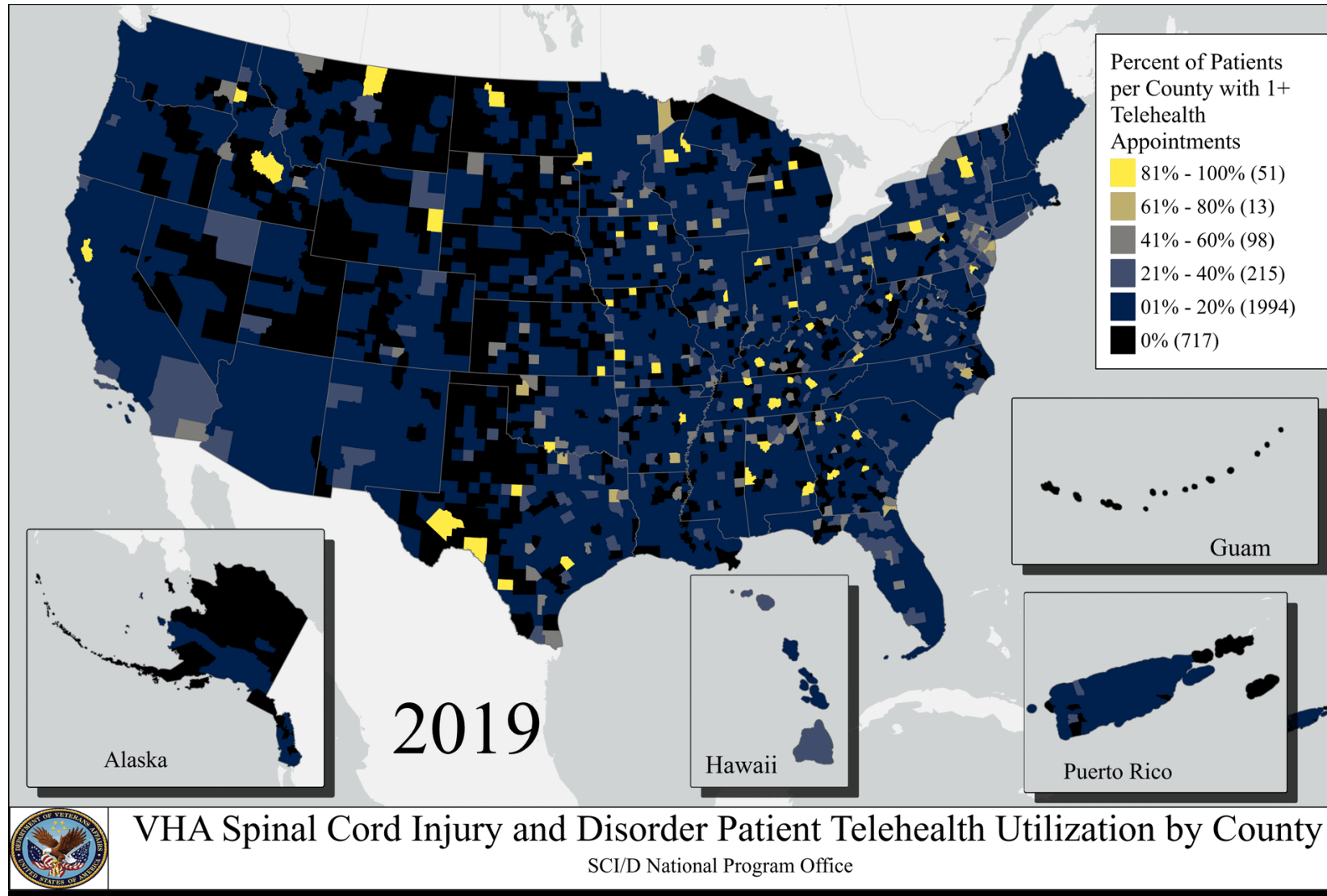


- Dental Quality Indicators by submarket for January 2024.
- The quality indicators are monthly measures where all sites aim to meet the target/goal in green.



- Edentulism is the state of being edentulous, or without natural teeth.
- Implications of this helps VA to determine if certain areas need dental specialist like prosthodontists who make dentures.

# VHA Spinal Cord Injury and Disorder (SCI/D) Patient Telehealth Utilization





# VHA Spinal Cord Injury and Disorder (SCI/D) Patient Telehealth Utilization

