



[**CLICK TO KNOW MORE**](#)

Smart Cities...

[Smart Governance]

Perspectives on data and technology
management from local governments.



Unsmart
Cities?

Pieter Bruegel the Elder, *The Fight Between Carnival and Lent*, 1559.



H
y
p
e
r
c
o
n
n
e
c
t
i
o
n
o
r
d
i
s
c
o
n
n
e
c
t
i
o
n
?

Denys Nevozhai. Shibuya, Tokyo Japan. 2019.

To Babel or
not to Babel?



Pieter Bruegel the Elder. *The Tower of Babel*. 1563.



Anthony Niño de Guzman (El Comercio). Lima. 2019

To city or not
to city?

PARIS 22:17

SAN FRAN 13:17

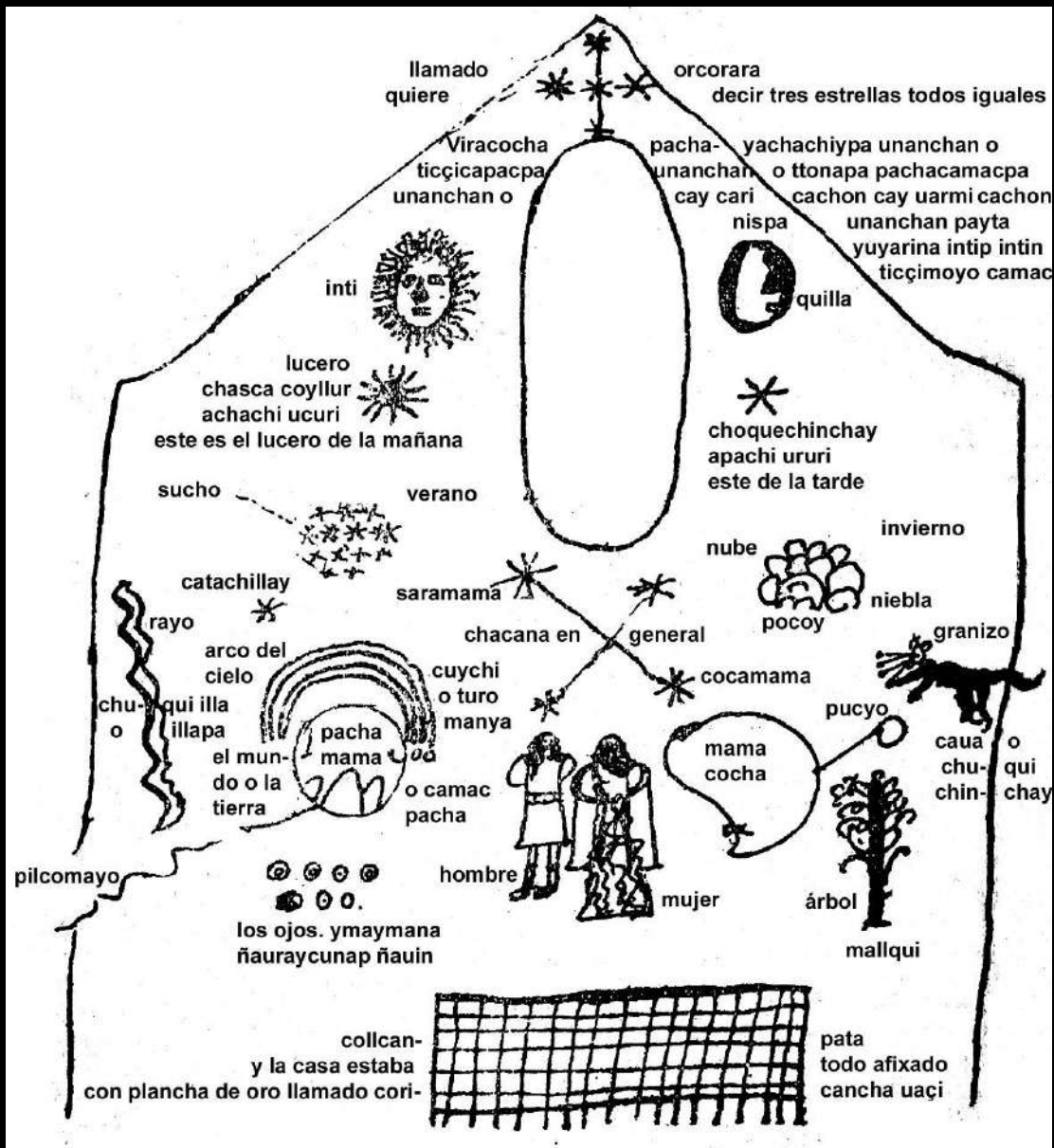
CHICAGO 15:17

NEW YORK 16:17

SYDNEY 08:17

SINGAPORE 05:17

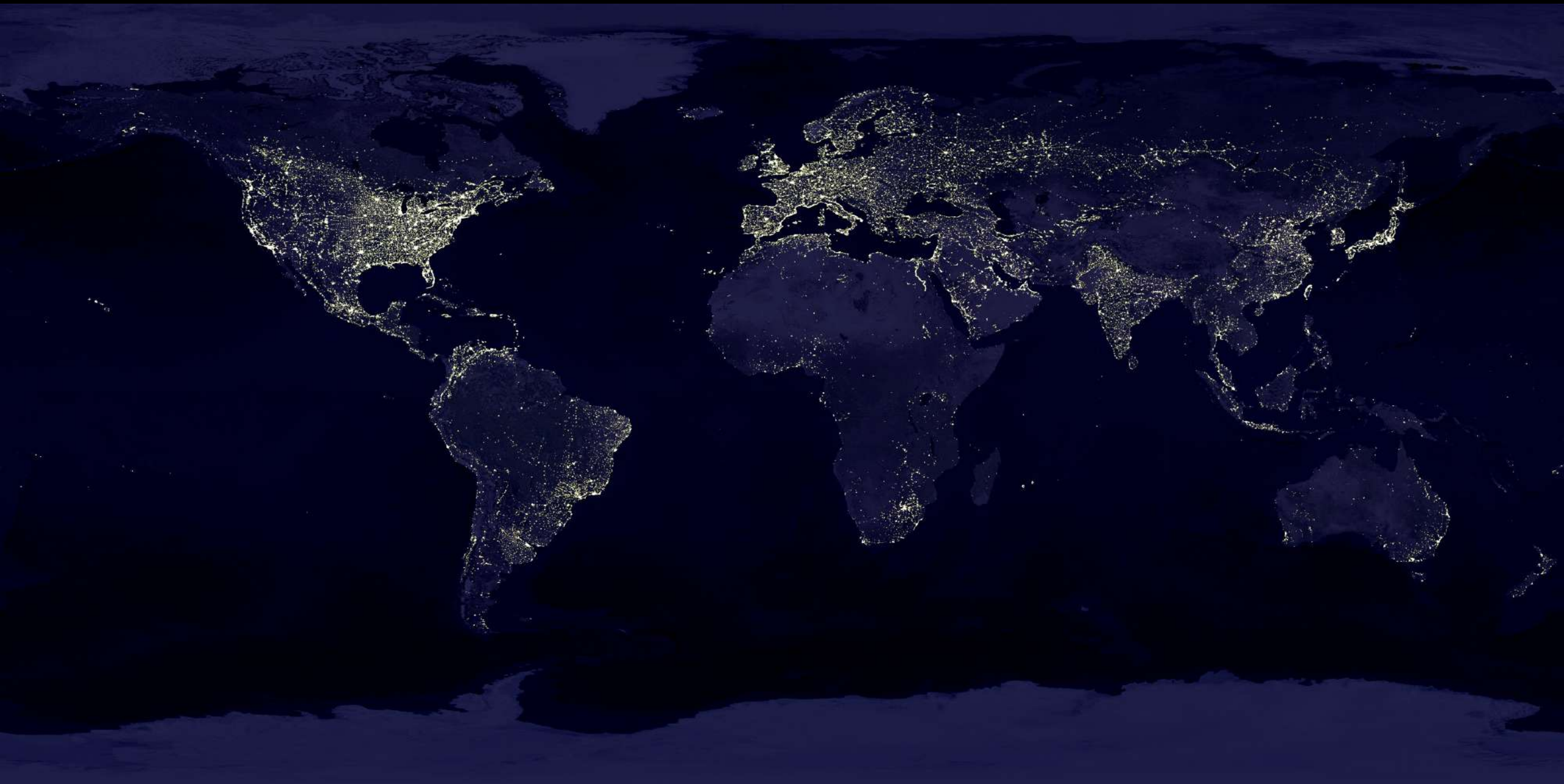
HONG KONG 05:17



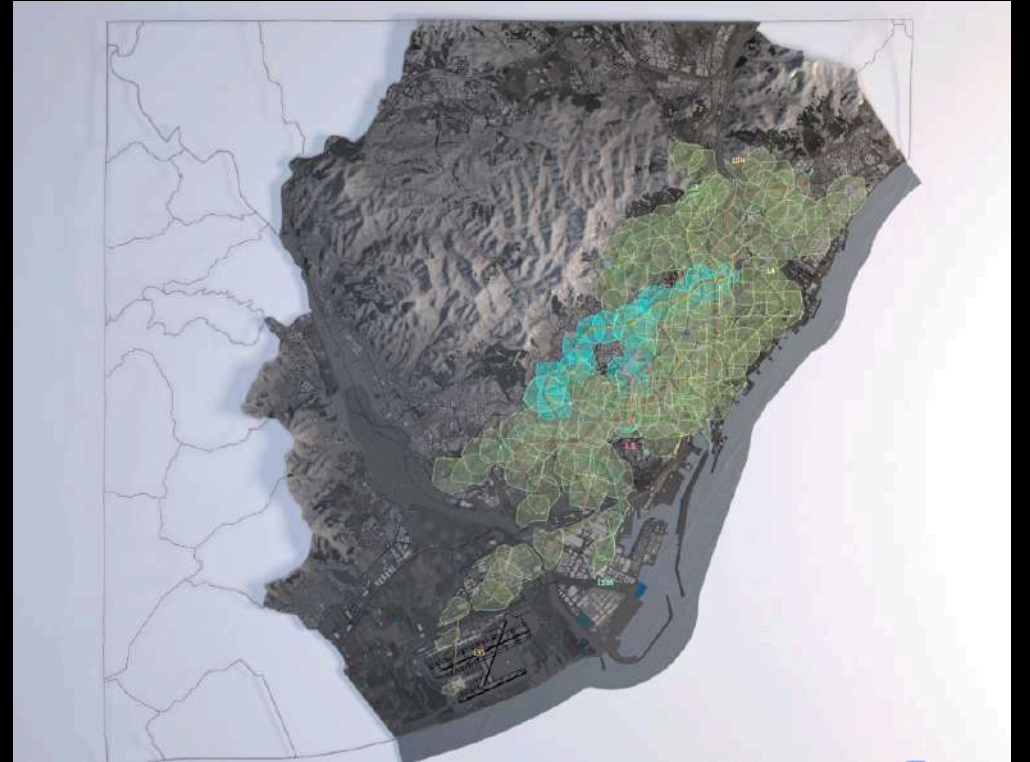
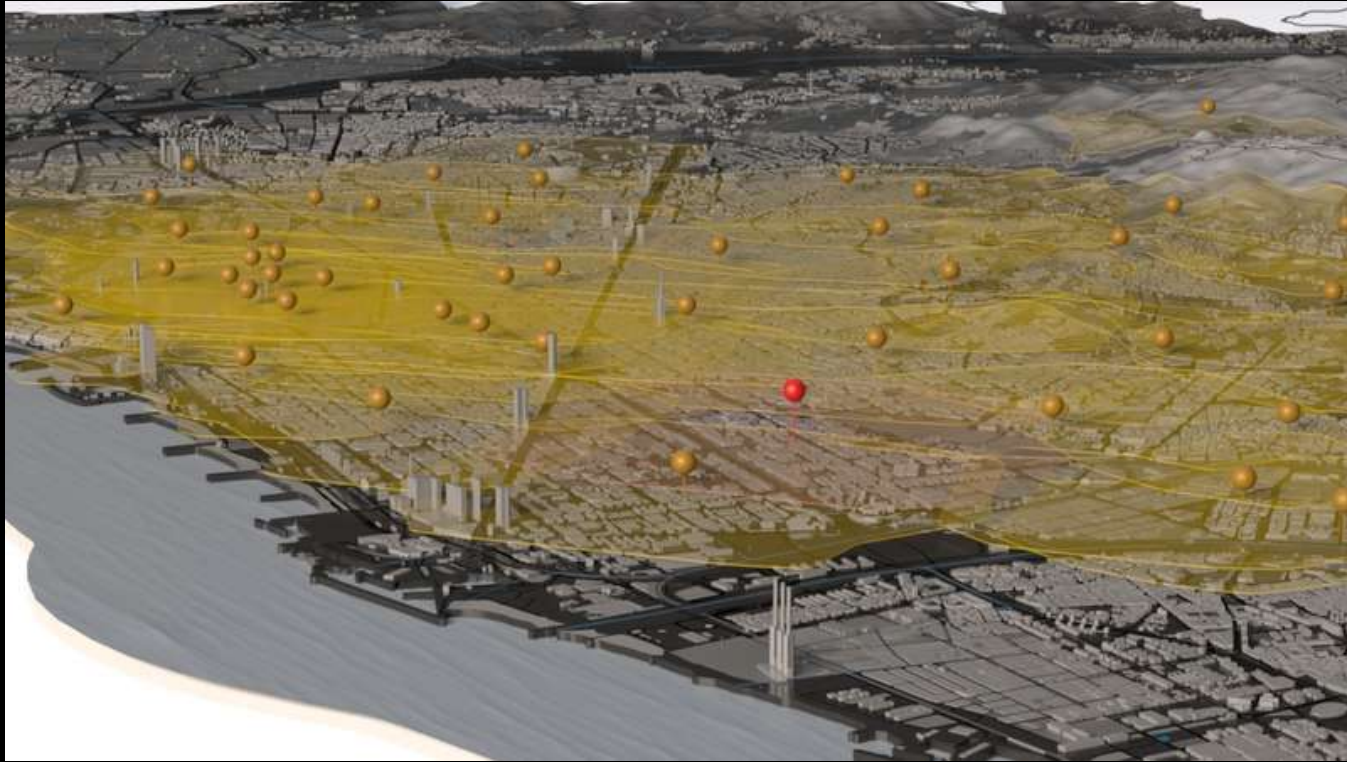
The Andean Cosmvision.



The Bhavachakra. The Wheel of Life. Buddhist life cycle representation.



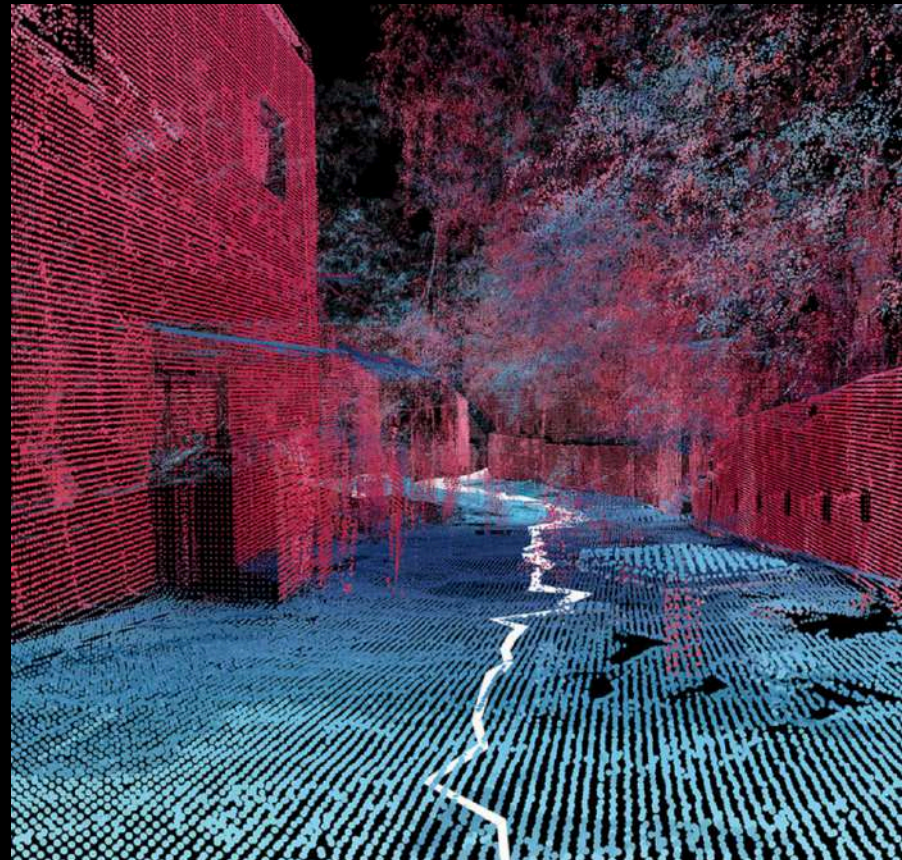
NASA. *Earth City Lights. 2000.*



Barcelona Supercomputing Center. *Libraries and TOD maps*. 2023.



Seoul Smart City Platform. Dongdaemun Design Plaza (DDP)



MIT Senseable Lab. *Favelas 4d*, Rio de Janeiro. 2021.

Promote [Press Start]!

Collaborate (make accessible)

Train & Update

Water the network



El Heraldo. Flood in Porto Alegre, Brasil. 2024.

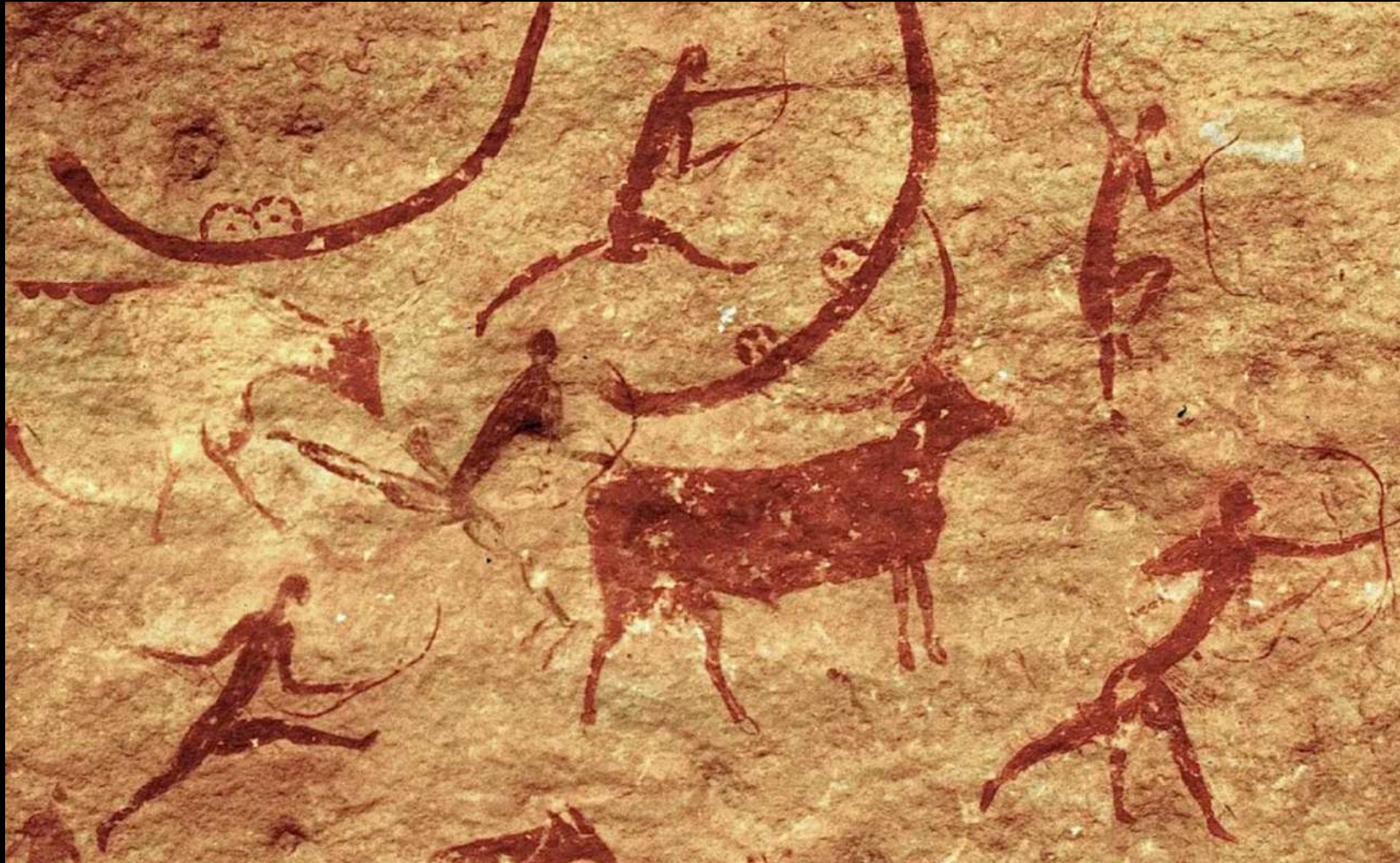






REUTERS/Fadi Shana/File Photo. Rafah in the southern Gaza Strip, December 12, 2023.





Patrick Gruban. National Park of Tassili n'Ajjer, Angelia.

Thanks!

Karel van Oordt Montalvo

Project Coordinator

Eurocities

karel.vanoordt@eurocities.eu

karelvanoordt@gmail.com

