



[**CLICK TO KNOW MORE**](#)



Red Sea Global

**Geospatial Technology in large scale Construction Progress &
Environmental Monitoring**

Geospatial World Forum 13 - 16 May 2024 | Rotterdam

Saeed Ullah Khan - Director GIS



Amaala

4,155 SqKm

The Red Sea

28,000 SqKm

AMAALA is:

- A **luxury wellness destination** being developed by RSG, focused on transformative personal journeys inspired by science, arts, and culture.
- 200km north of the Red Sea destination and 700km north of Jeddah.
- Set in a **4,155km²** area within the Prince Mohammed bin Salman Nature Reserve.
- Opening its first phase in 2024 with 8 resorts offering 1,300 rooms and 200 residential units.
- **Due for completion in 2027** with 3,000 rooms in 25 hotels and 934 residences.
- Aiming to be an international **hub for luxury yachting** on the Red Sea.
- Going to be powered solely by renewable energy and will be **carbon neutral** upon opening.
- Guests capped at **500,000** per year on completion.



THE RED SEA destination is:

- A **luxury tourism destination** being developed by RSG on the west coast of Saudi Arabia.
- Set in a **28,000km²** area that includes an archipelago of 92 pristine islands, 50 dormant volcanoes, dramatic mountain ranges and sweeping sand dunes.
- **Opening its first phase from 2023** with 16 hotels offering 3,000 rooms, an international airport, marina, 18-hole championship golf course, and retail and entertainment facilities.
- **Due for completion in 2030** with 8,000 rooms in 50 hotels and more than 1,000 residences.
- Pioneering a new approach to **regenerative tourism** that aims to enhance the natural environment and local economy and culture for generations to come.
- Set to be the world's largest tourism destination **fully powered by renewable energy** day and night supported by the **world's largest solar battery storage facility**.
- Aiming to be **carbon neutral** upon opening.
- Going to announce more **international hospitality brands** following the 12 out of 16 already announced for phase one.
- Guests capped at **one million per year** on completion.



Red Sea
Global

The Challenge

- The focus of the Red Sea Global GIS team is to provide a solution that is **scalable** to serve the multi disciplinary teams/users.
- Needed a robust solution to take advantage of new functionalities to address challenges in **data sharing and access.**
- A solution to cope with the **data deluge** and present the data through a single platform as a Single Source of Truth.
- To empower the users with **location intelligence** to make informed decisions.

The Solution

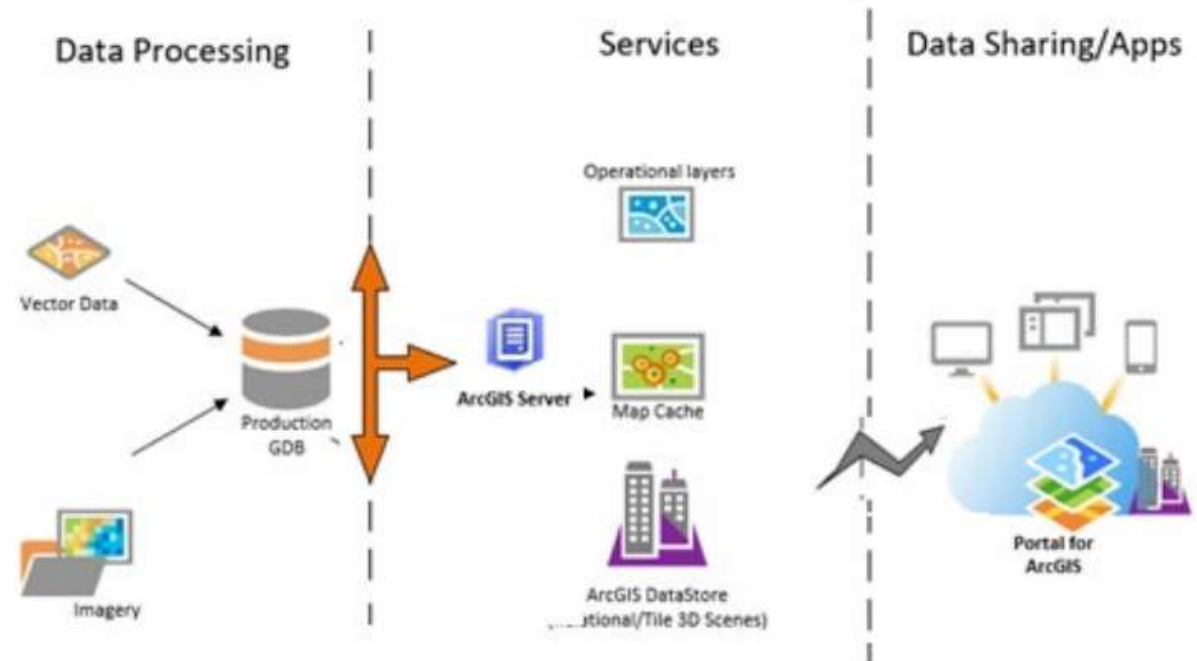
- Moved from a disjointed system to an organized, **centralized** enterprise geodatabase.
- Conducted comprehensive **user requirement** analysis to design a robust solution.
- Developed a comprehensive GIS **data dictionary** based on the EU INSPIRE Directive.
- Developed a **Master Geodatabase** schema.
- Deployed **GIS Portal** application on the ESRI ArcGIS Enterprise platform.

GIS Portal – System Overview/Architecture

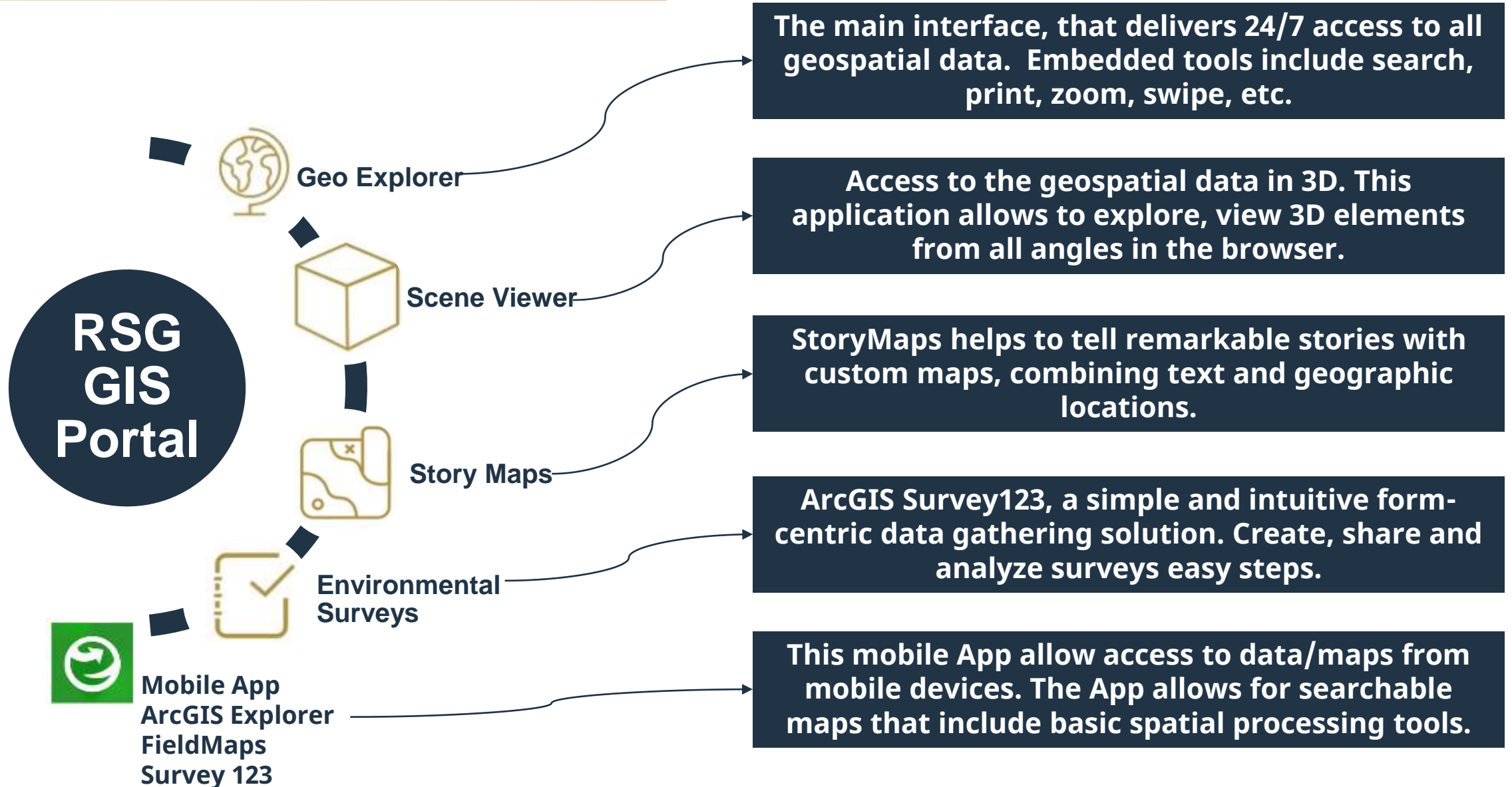


The RSG GIS model is data centric with a comprehensive geo database developed based on the data themes as per the INSPIRE Directive.

The geo database is at the center of the overall architecture of the RSG enterprise GIS which heavily rely on the incoming data.



GIS Portal – Components

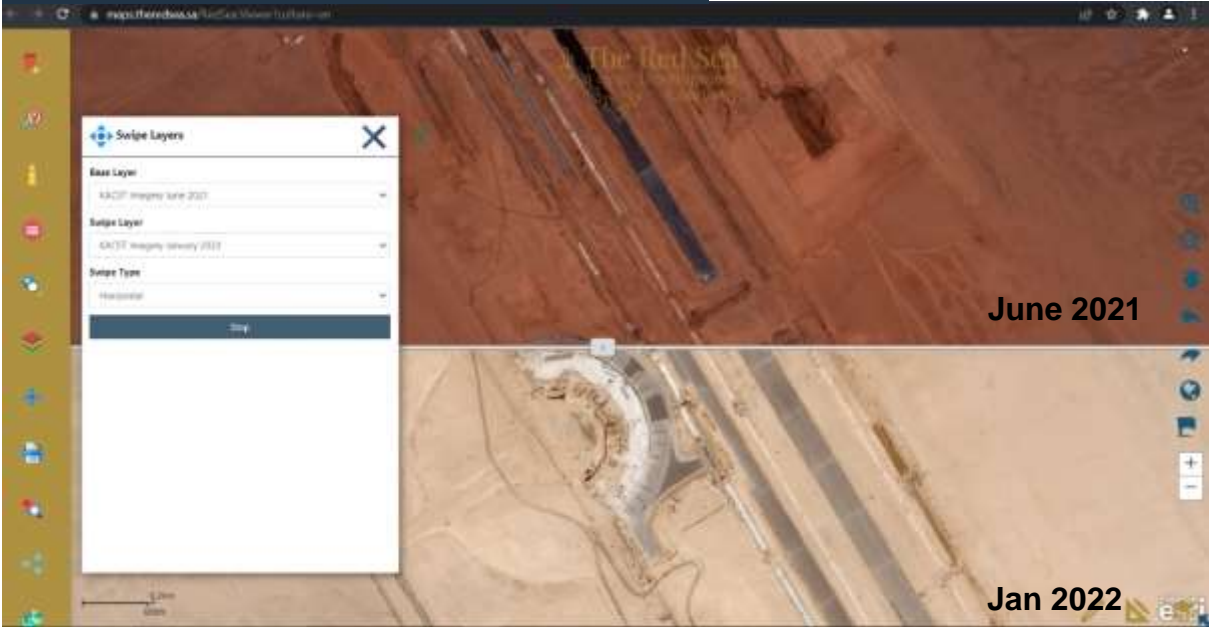


GIS Portal

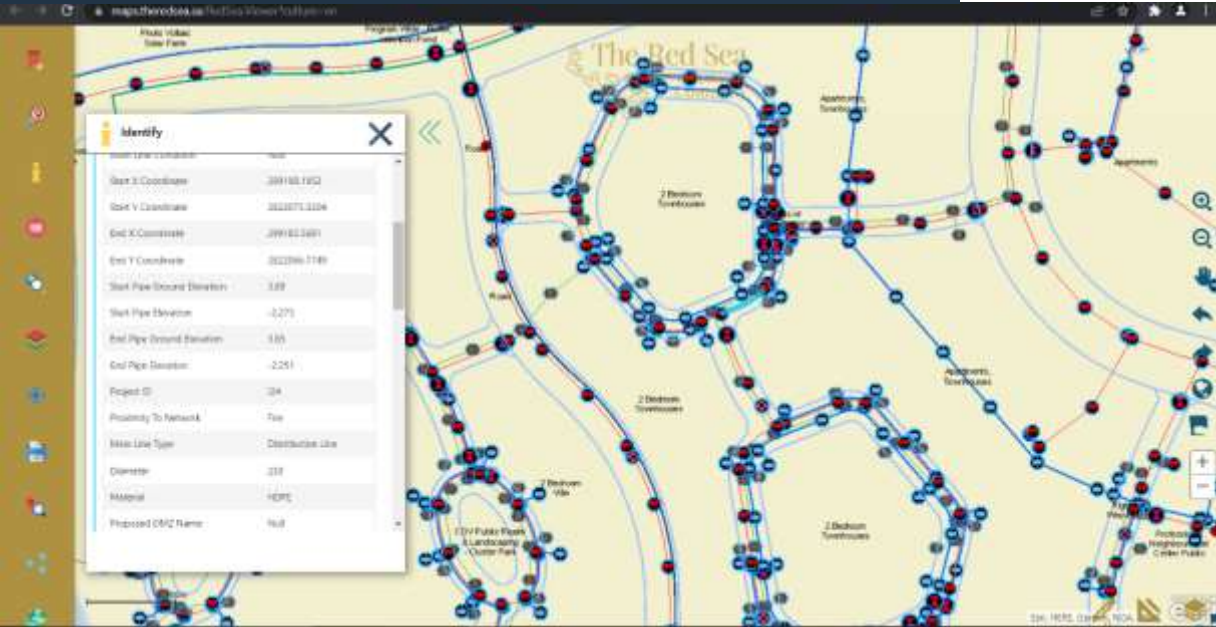


Advance & Standard Spatial Toolset

Sattelite Image Comparison



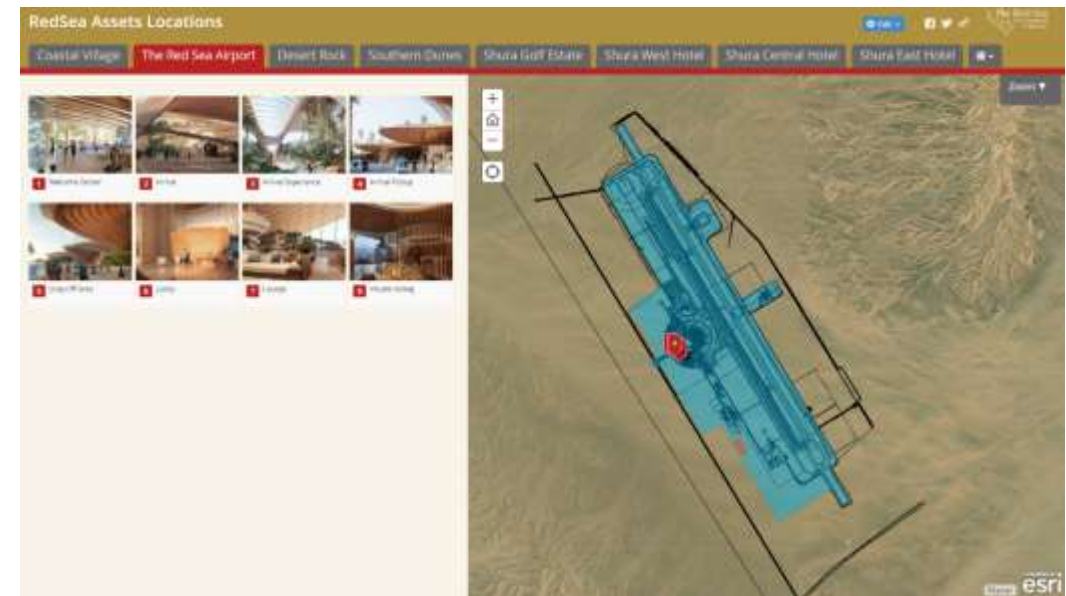
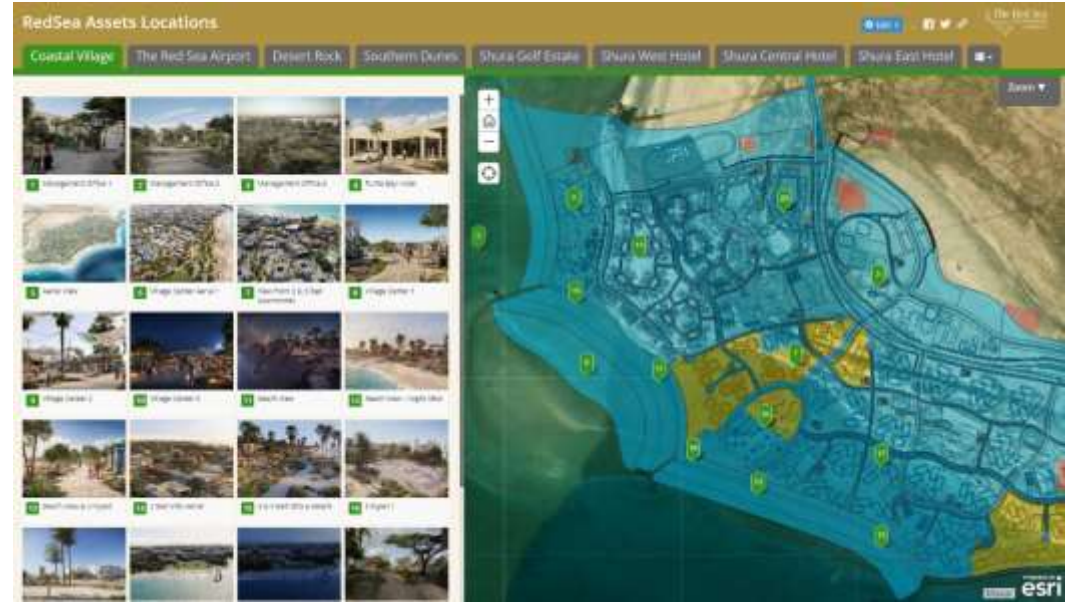
Network visualization and identification



Mobile Application



GIS Portal – 3D Scene Viewer and Story Maps

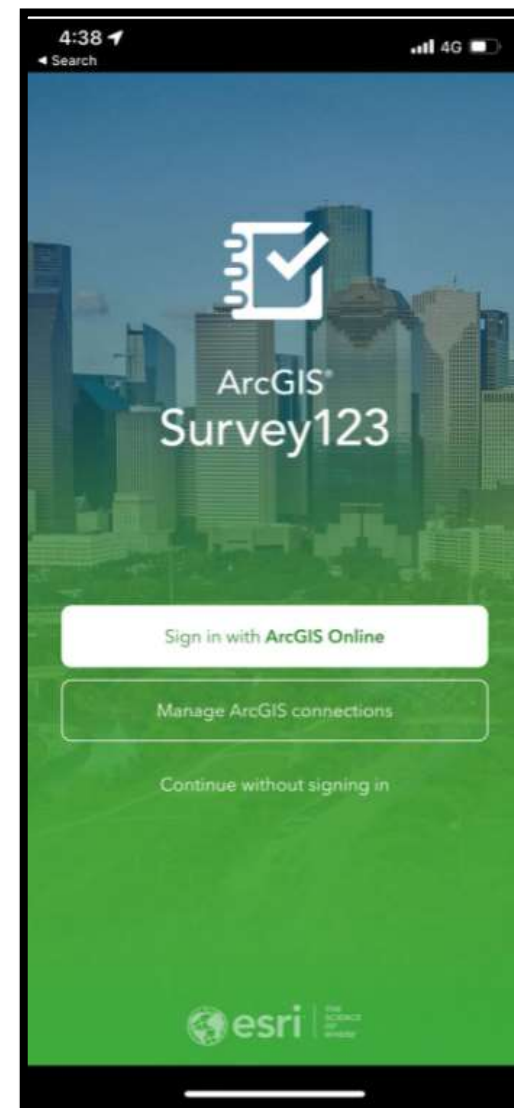


GIS Portal – Mobile Applications



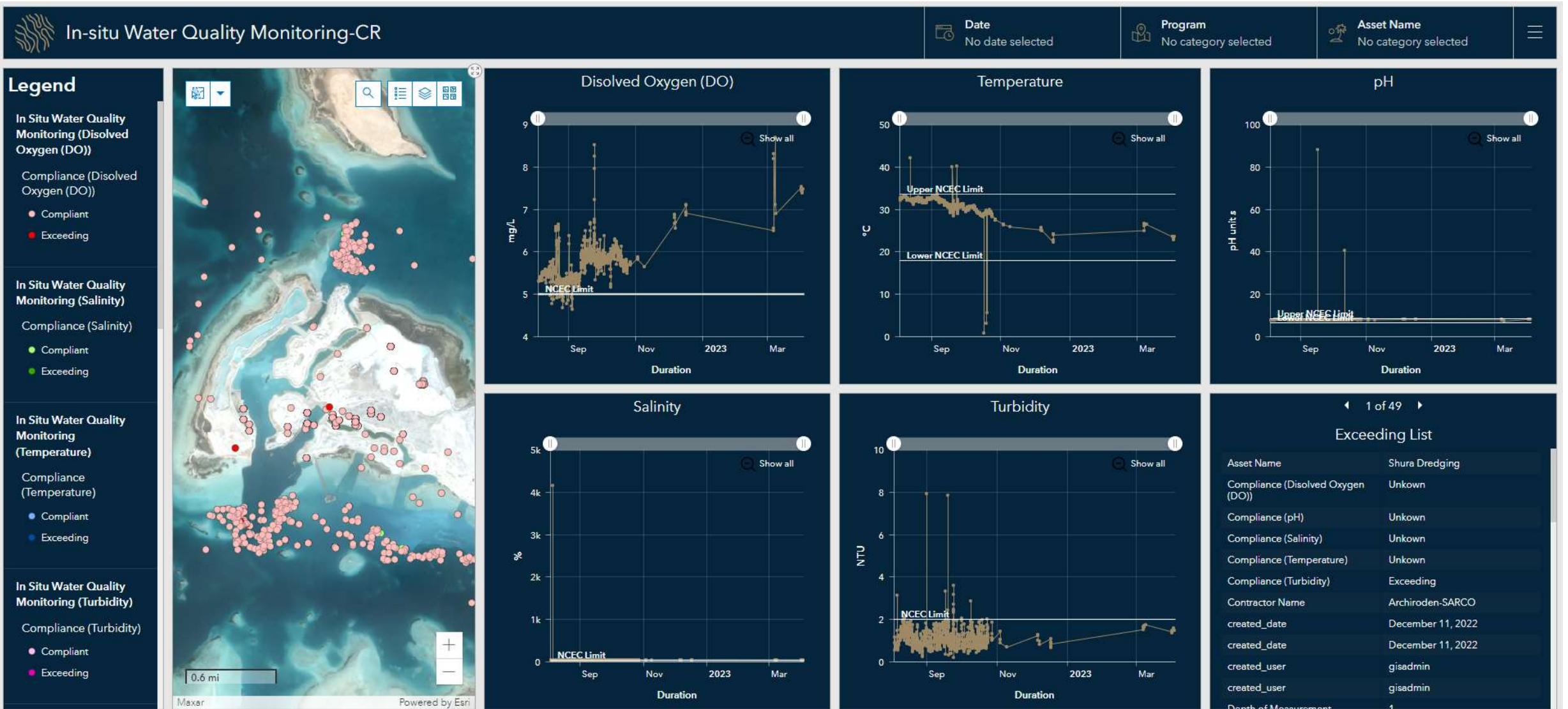
GIS Portal – Data Collection Mobile Apps

As a registered user to the RSG GIS PORTAL, all users have access to the ArcGIS Survey123 mobile application with customized forms.



GIS Portal – Data Collection Mobile Apps

Environmental Monitoring Dashboards



Monitoring – Solution “Out of this World”



مدينة الملك عبدالعزيز
للعلم والتقنية KACST



Monitoring – KACST Contract

Contract with King Abdulaziz City for Science and Technology (KACST) for the monthly Image capture of the development sites at 0.5m resolution.

Total Area covered every month = 600 SqKm

Airport



Nursery



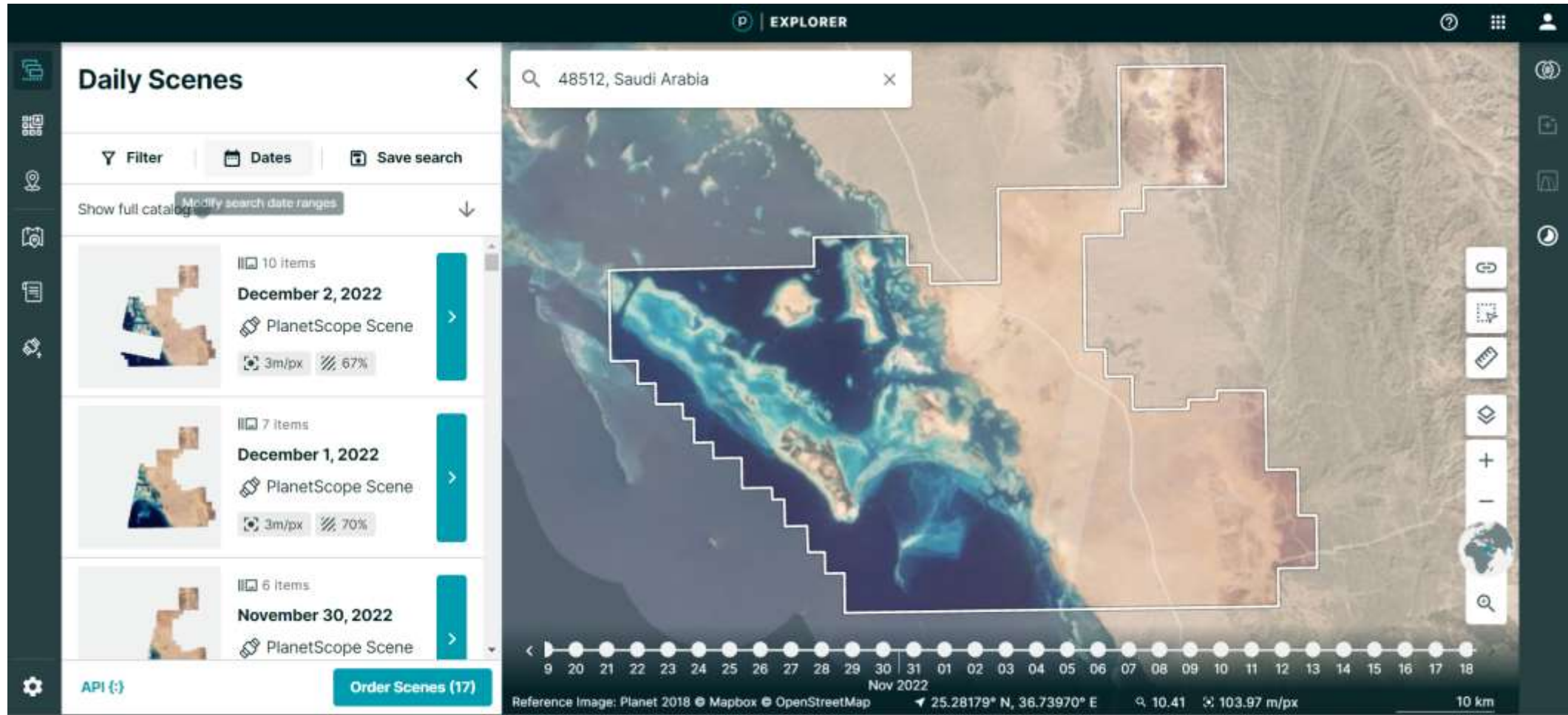
Construction Village



Monitoring – Planet Contract

Contract with PLANET to access the *Planet Explorer* for near-daily imagery at 3m resolution. Every day, we are using Planet data to reveal the changes happening in the areas we care about most.

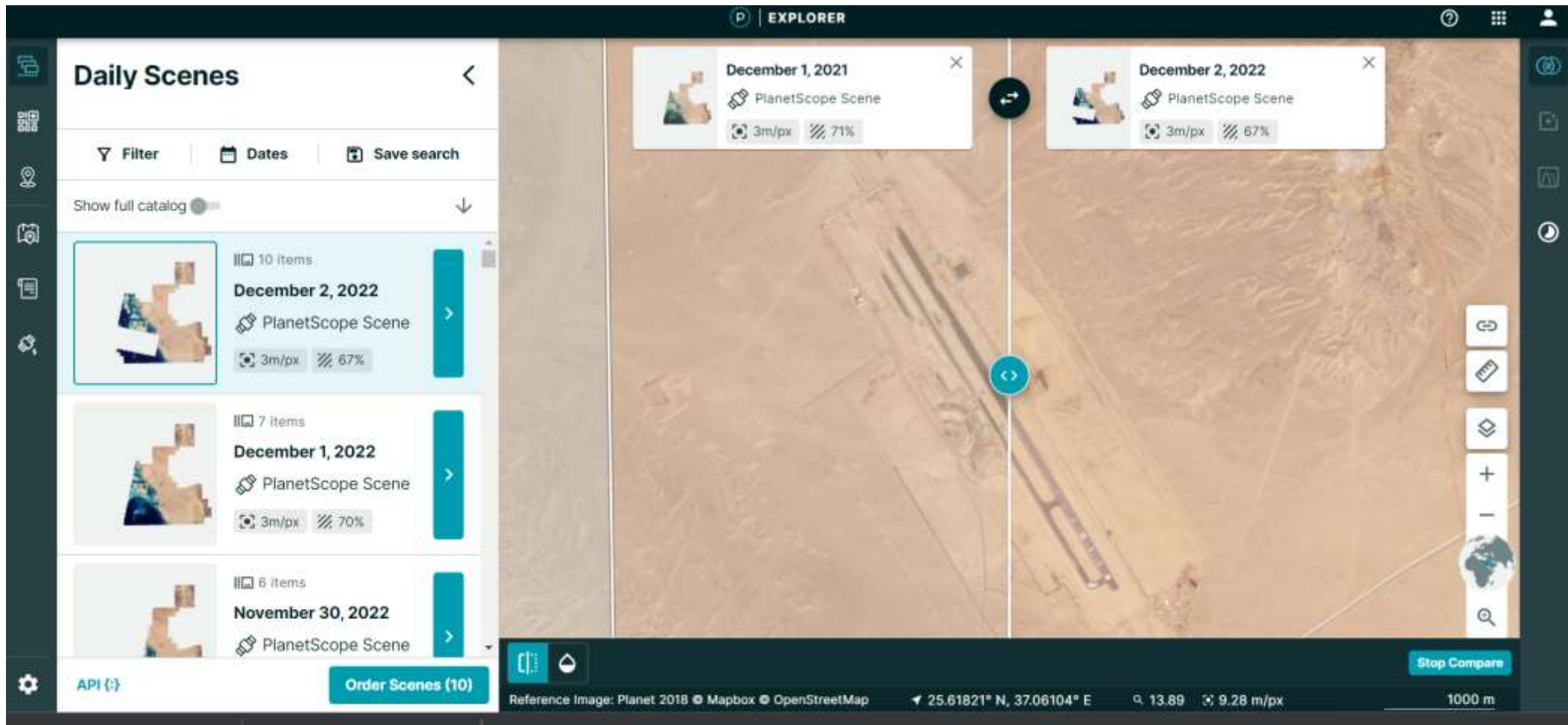
Total area covered daily = 5,000 SqKm



Monitoring – Planet Contract

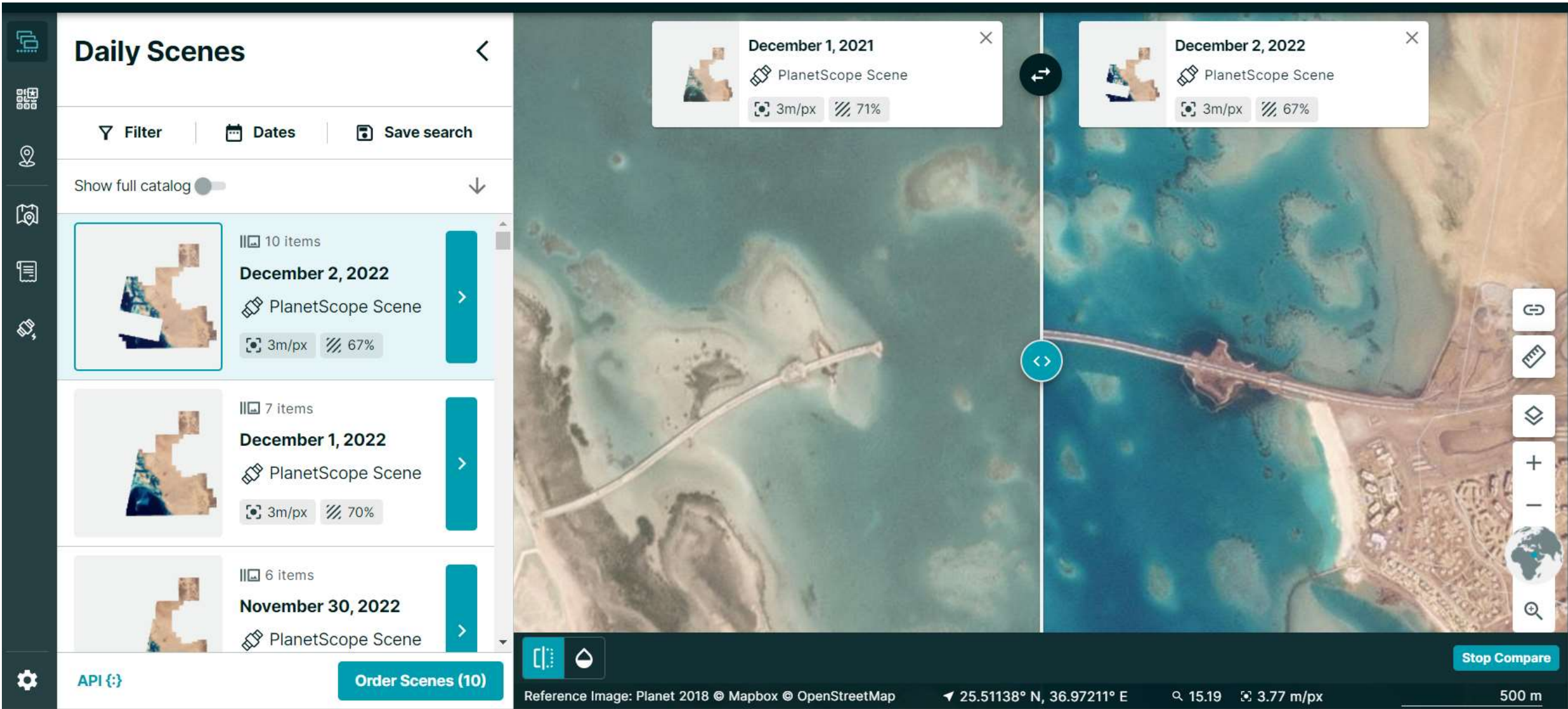
Contract with PLANET to access the *Planet Explorer* for near-daily imagery at 3m resolution.

Every day, we are using Planet data to reveal the changes happening in the areas we care about most.



The screenshot displays the Planet Explorer web interface. On the left, a sidebar titled "Daily Scenes" lists recent satellite imagery with filters for "Filter", "Dates", and "Save search". The main area shows a side-by-side comparison of two satellite scenes: "December 1, 2021" (PlanetScope Scene, 3m/px, 71% coverage) and "December 2, 2022" (PlanetScope Scene, 3m/px, 67% coverage). The interface includes a search bar, a "Show full catalog" toggle, and a "Stop Compare" button at the bottom right. The bottom status bar shows the reference image as "Planet 2018" and provides coordinates (25.61821° N, 37.06104° E), zoom level (13.89), resolution (9.28 m/px), and a scale bar (1000 m).

Monitoring – Planet Contract



Daily Scenes

Filter | Dates | Save search

Show full catalog

- 10 items
December 2, 2022
PlanetScope Scene
3m/px 67%
- 7 items
December 1, 2022
PlanetScope Scene
3m/px 70%
- 6 items
November 30, 2022
PlanetScope Scene

API | Order Scenes (10)

December 1, 2021
PlanetScope Scene
3m/px 71%

December 2, 2022
PlanetScope Scene
3m/px 67%

Stop Compare

Reference Image: Planet 2018 © Mapbox © OpenStreetMap
25.51138° N, 36.97211° E
15.19 3.77 m/px
500 m



Red Sea
Global

Thank You