



[**CLICK TO KNOW MORE**](#)



emerggi

Let's drive renewable
energy forward

Geospatial World Forum 2024

Shravan Shah



About Emergi

Emergi B.V
Base of Innovations

Digital Platform

Revenue

Vehicles / Charging Stations

Market

Investments

Impact

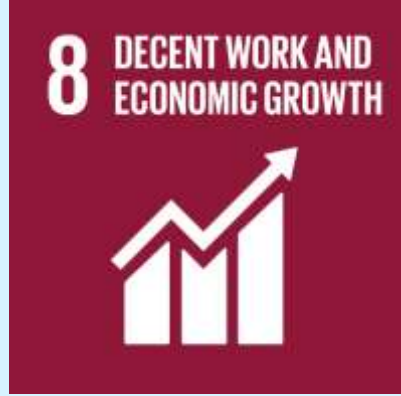
Social Funds

Data

Branding

Feedback

Emergi Local Office
Base of Operations





The Problem

Developing markets like Liberia and Sierra Leone are flooded with **polluting** gasoline powered tuktuks that keep drivers in a **poverty-trap**.



Fuel shortages and fluctuating prices



ICE engines requiring high maintenance



Financial insecurity due to unregulated loans



Air pollution leading to bad health



Net negative income:
- \$1.58/day
on average*



Poor customer service leading to unhappy customers



Noise pollution and driver hearing loss



Insecurity due to police harassment



Low standing of drivers in society

* Based on Emergi market study into TCO (Total Cost of Ownership) of ICE tuktuks in Liberia

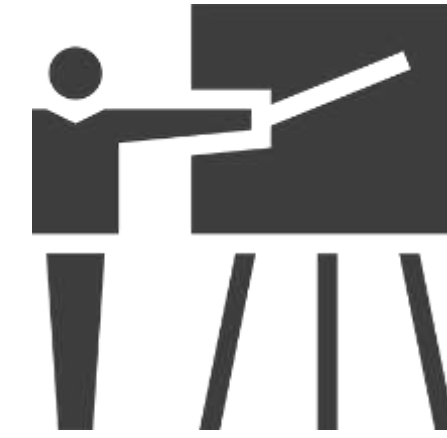
Our solution: Innovative integrated approach



User-driven approach



Solar-charging infrastructure



Capacity Building



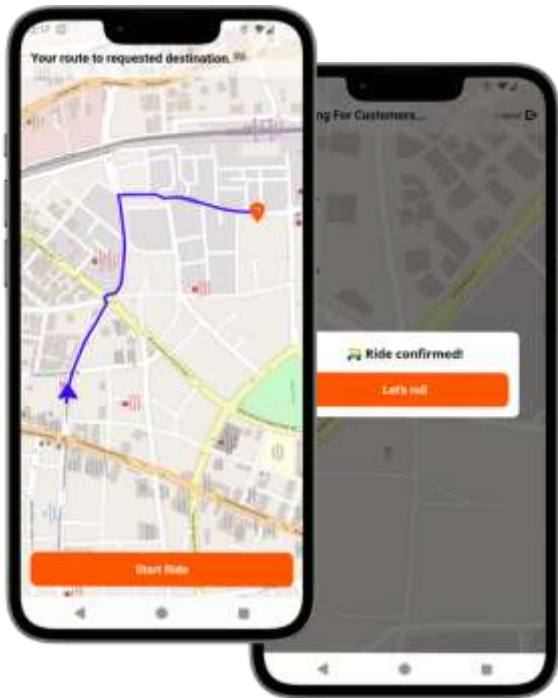
Driver pension build-up through social funds



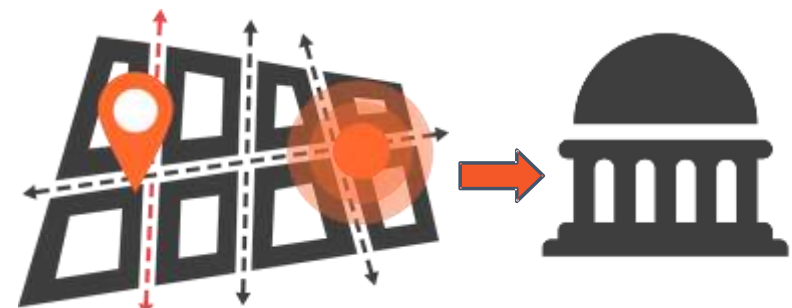
Net positive income:
\$6.12/day on average*



Lease-to-use contracts with women drivers



Digital solutions to mobility



Data-driven approach to policy advocacy



* Based on Emergi market study into TCO (Total Cost of Ownership) of ICE tuktuks in Liberia



Harnessing Our E-tuktuk Geo-Data for Community Empowerment



Profits from geo-data to build up social funds drivers



Road improvement projects informed by our geo-data



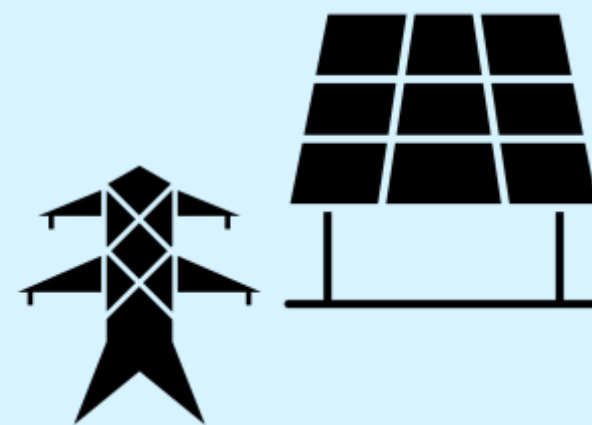
smart batching is to reduce traffic, lower costs, reduce environmental impact



providing points of interest available on OSM



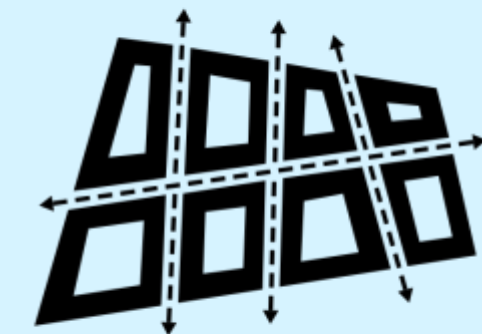
creating community awareness about geo-data through mapathons



customising grid-infrastructure to support mobility transition



EV-policy informed by our geo-data



creating output from geo-data to inform SUMP

Team Drive



Being a father of two adorable children has made me acutely aware of the world future generations will inherit from us.

Richard van Hoolwerff

CEO & Founder, NL

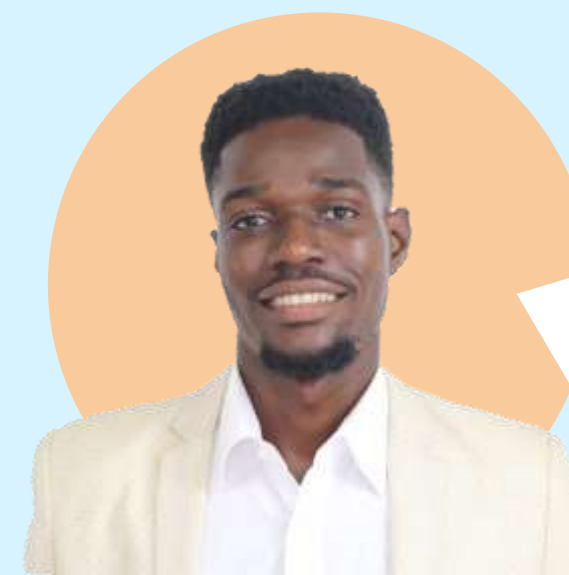
Entrepreneurship Development SSA



Youp Dumas

Systems Engineer, LR

Systems Design & Operations



Elvis T. Thomas

Head of Operations, LR

Renewable energy & Civil Engineering

At a time when our planet is deteriorating at a fast rate, with our choices of energy being one of the major causes, I believe that moving away from fossil fuels is the only answer!



Our innovative ideas can improve the lives of my fellow Liberians.

Barbara Doe Quarbo

Head of Finance, LR

Corporate Finance



You cannot solve climate change without addressing the needs of people affected by it, climate transitions needs social transitions!

Selina Abraham

Creative Director, NL

System Transition & Urban Planning



The creative use of data can have a powerful impact on people's lives, but as Spiderman says "...with great power comes great responsibility!"

Shravan Shah

Advisor, NL

Data Policy & GIS

Local Impact - Women Drivers



Who?

Emergi has hired woman drivers exclusively for the pilot in **Monrovia, Liberia!** These amazing women will have a use-based lease contract to access Emergi's fleet, be part of the **sustainable mobility** sector and have a **decent income** to provide for their families.

Why?

Women were instrumental in ending Liberia's civil war. Their **resilience** and determination is our super strength. Our research with existing fleet owners operating in the region also revealed that woman drivers are **reliable** and drivers with **good work ethics!**



Partners



Electric tuktuk with e-mobility app

The electric tuktuks are designed, manufactured and tested by our supplier Sazgar in Pakistan design input from Emergi local offices.

Charging infrastructure

The solar charging infrastructure is designed, built and tested in the Netherlands by our supplier. It is a plug-and-play solar system that is specifically designed for areas with less grid connectivity and an abundance in sunlight.



Local partners

An MOU with the Ministry of Transportation provides a mutually beneficial relationship providing support in business registration waivers for early years of operations and while offering data and Sustainable Urban Mobility Plans for wider EV uptake.

Support programmes

Participation in various support programmes, such as the YEP programme, Impact City and Startupbootcamp accelerator offers us access to talent, knowledge, resources and networks of investors and funding.



Let's get rolling!

Tel: +31683423081

Email: shravan@emergi.nl

www.emergi.nl