



[\*\*CLICK TO KNOW MORE\*\*](#)

**Empowering  
Smart Mobility & Modeling with  
Large Scale Mobile Mapping**

## AI-InfraSolutions

Intelligent geospatial insights for smart asset management

**Stefan Wierda**

Director of Innovation at AI-InfraSolutions

- Recently joined AI-InfraSolutions
- ~ 3 years experience in civil infrastructure
- ~ 6 years experience in marine
- Ph.D. @ University of Groningen



Converting reality data into actionable geospatial information, leading to data-driven infrastructure design, construction, and maintenance, reducing waste and improving overall infrastructure and safety.

## Why mobile mapping matters for Smart Cities.

### Foundation for advanced urban planning and smart mobility solutions

- ▶ Transportation hub placement
- ▶ High resolution mapping data for ADAS and self driving cars
- ▶ Real-world simulation for model testing

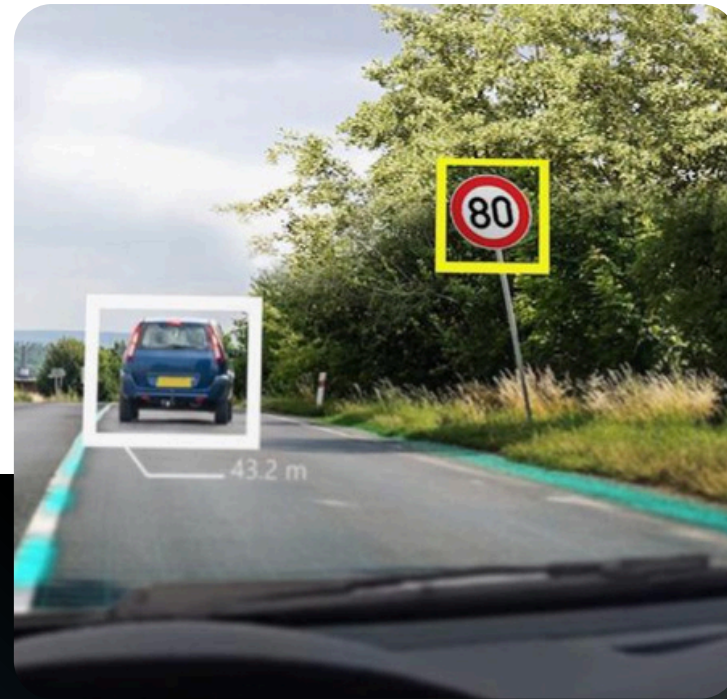
### Real-time data enrichment

- ▶ Give context to floating car data, city cameras and other IoT devices
- ▶ Crucial for dynamic city management

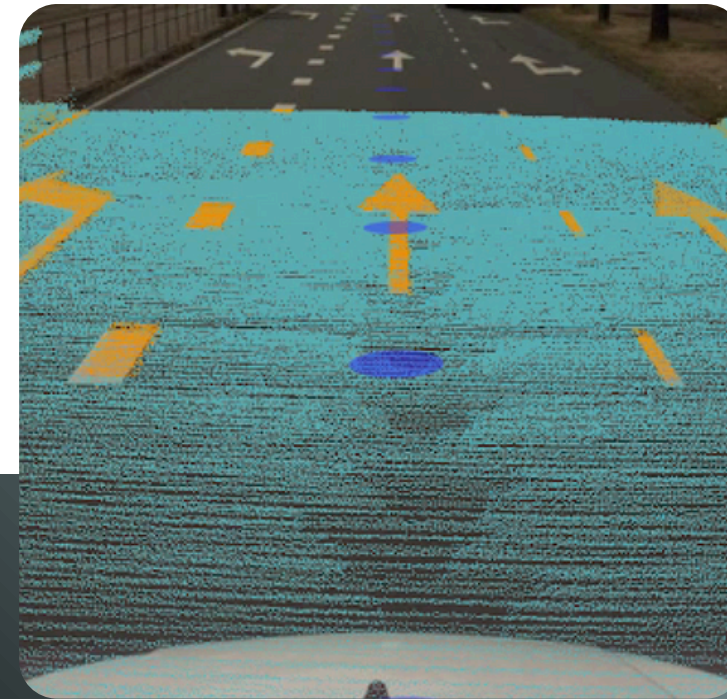
# A Large-Scale Mobile Mapping solution.



Harness tools for **data capture** and **visualisation**



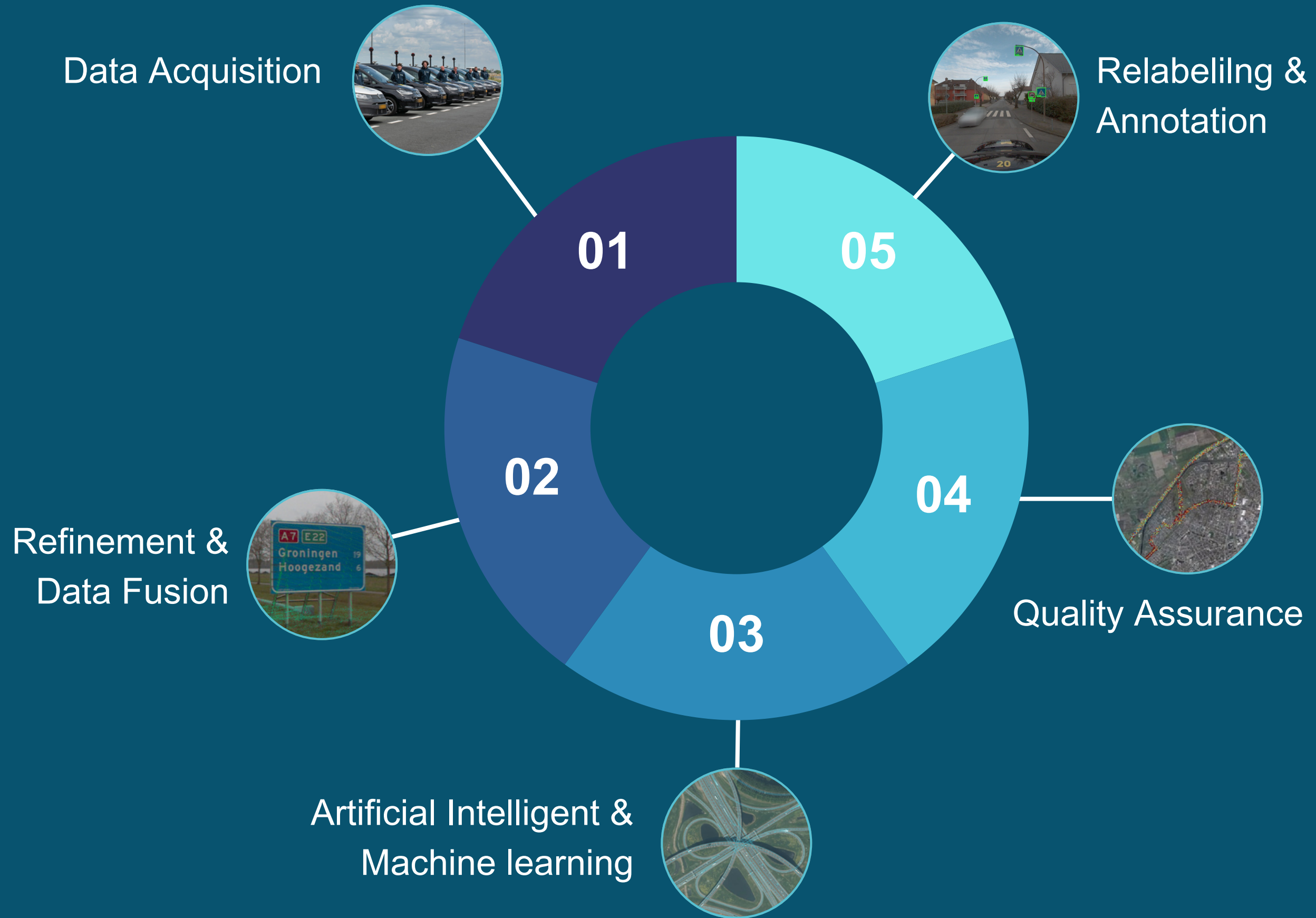
Our **AI** enriches data, ensuring asset precision



Crafting vivid 3D **'digital twin'** models



**Local data storage** meets security requirements



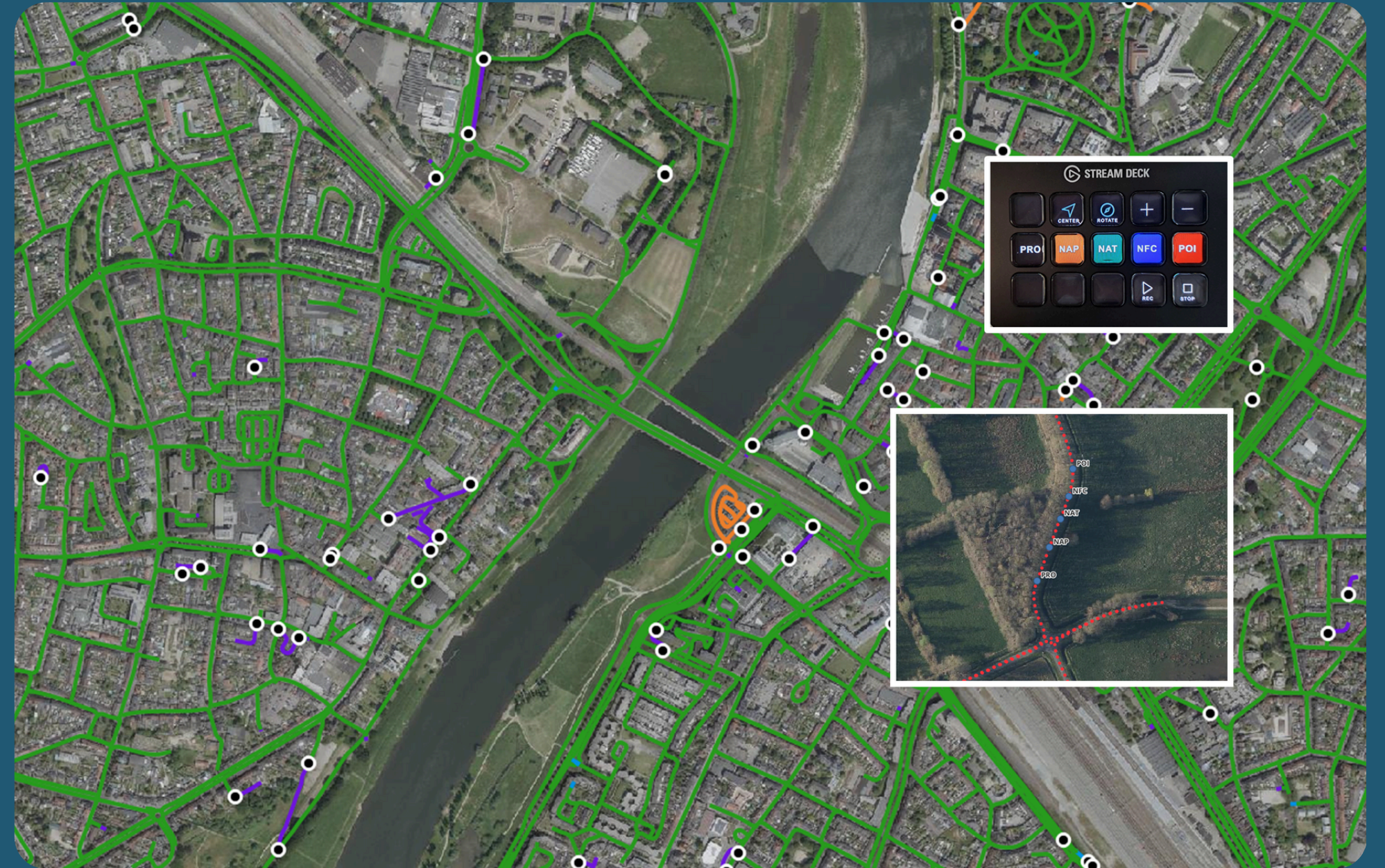
**Efficient processing with minimal  
human intervention.**



## Real-time insights on operations.

Mobile Mapping Cars communicate with our Fleet Operations (IoT)

Map is automatically updated based on feedback of our drivers

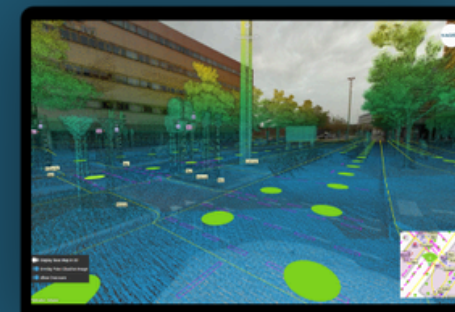
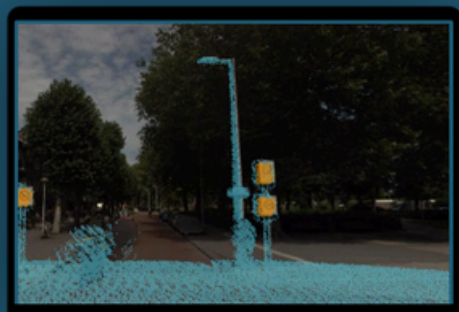
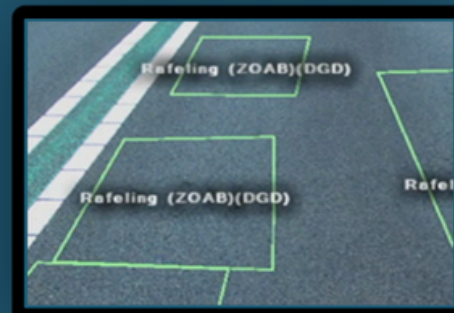


## Quality Assurance and Labelling.

The screenshot displays the AI-Infra Solutions software interface. On the left, a control panel includes a search bar with 'ast24\_0066\_groningen' and 'NL\_HT273\_C - 187 Assets'. It features a 'Grid Complete' toggle, a 'Filter' dropdown, and buttons for '200 m' (highlighted in green) and 'Reject'. Below these are 'Previous' and 'Next' buttons, a search record field with '199250 : Buispaal', and buttons for 'Select Damages', 'Add Traffic sign', and 'Add Carrier'. A 'Traffic sign Type' section shows various icons, with '200 m' highlighted in green. A 'Carrier Type' section shows various icons. On the right, a 3D view shows a road with a traffic sign labeled 'OB401\_200m' and a marker labeled '199250 : Buispaal'. The interface also includes a 'pick a text' dropdown with '200 m' and a 'Search record...' field with '199250 : Buispaal'.

## Impact on Urban Mobility.

- Map assets in a cost effective manner
- Our studio makes asset information readily available and combines data sources



# Driving the Future of Urban Mobility.

Your partnership can help shape the future of sustainable, smart cities. Let's connect to explore potential collaborations and innovations.

## Let's connect



+31 6 414 85856

[ai-infrasolutions.com](https://ai-infrasolutions.com)

[stefan@ai-infrasolutions.com](mailto:stefan@ai-infrasolutions.com)



SCAN HERE