



# GWFF

GEOSPATIAL WORLD FORUM

[\*\*CLICK TO KNOW MORE\*\*](#)

# Indoor maps for Facility Management

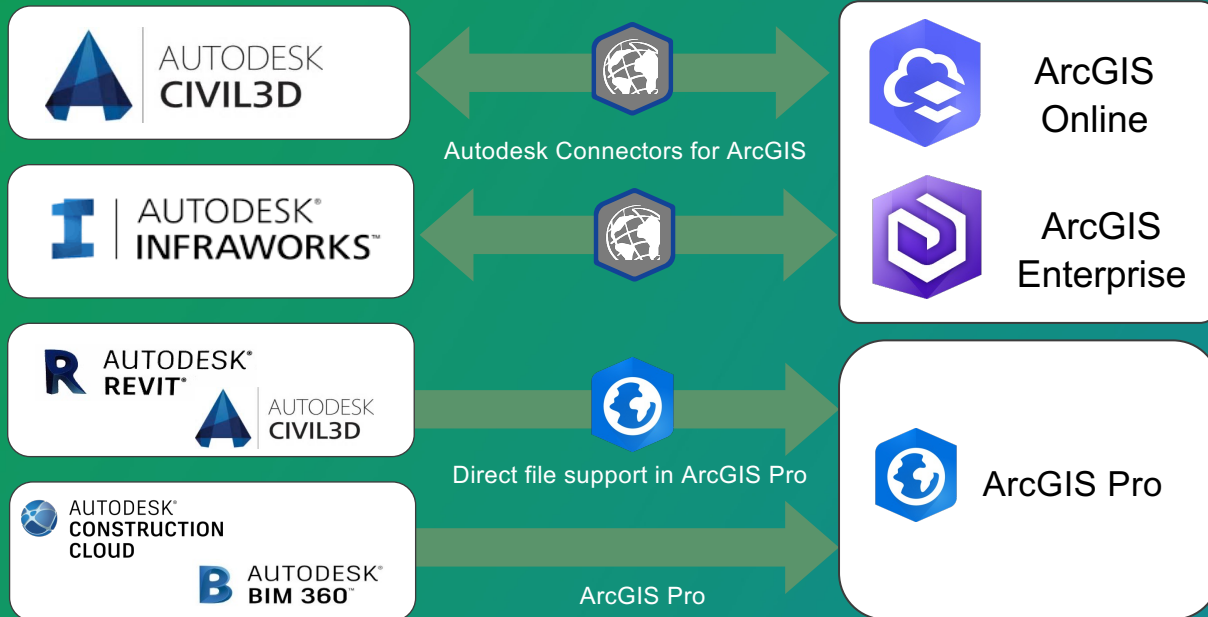
Hesham G. Gaafar  
Digital Twin Lead at Esri SA



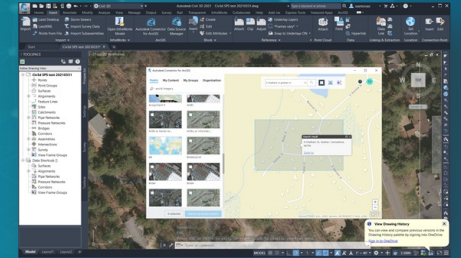
**80-90%**

**of the total cost of asset  
ownership occurs during the  
operational phase of an asset's life**

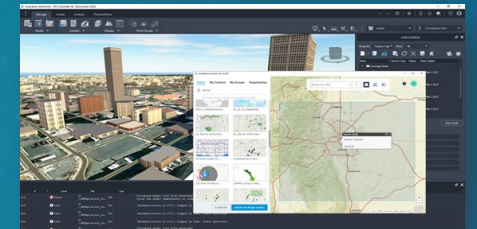
# Design and Build



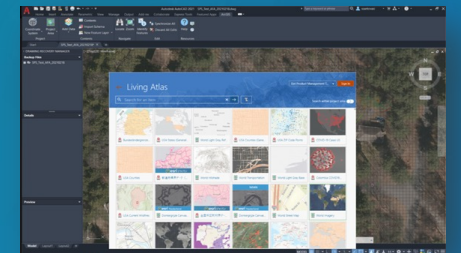
**Civil 3D**  
Connecting Civil 3D Desktop to ArcGIS



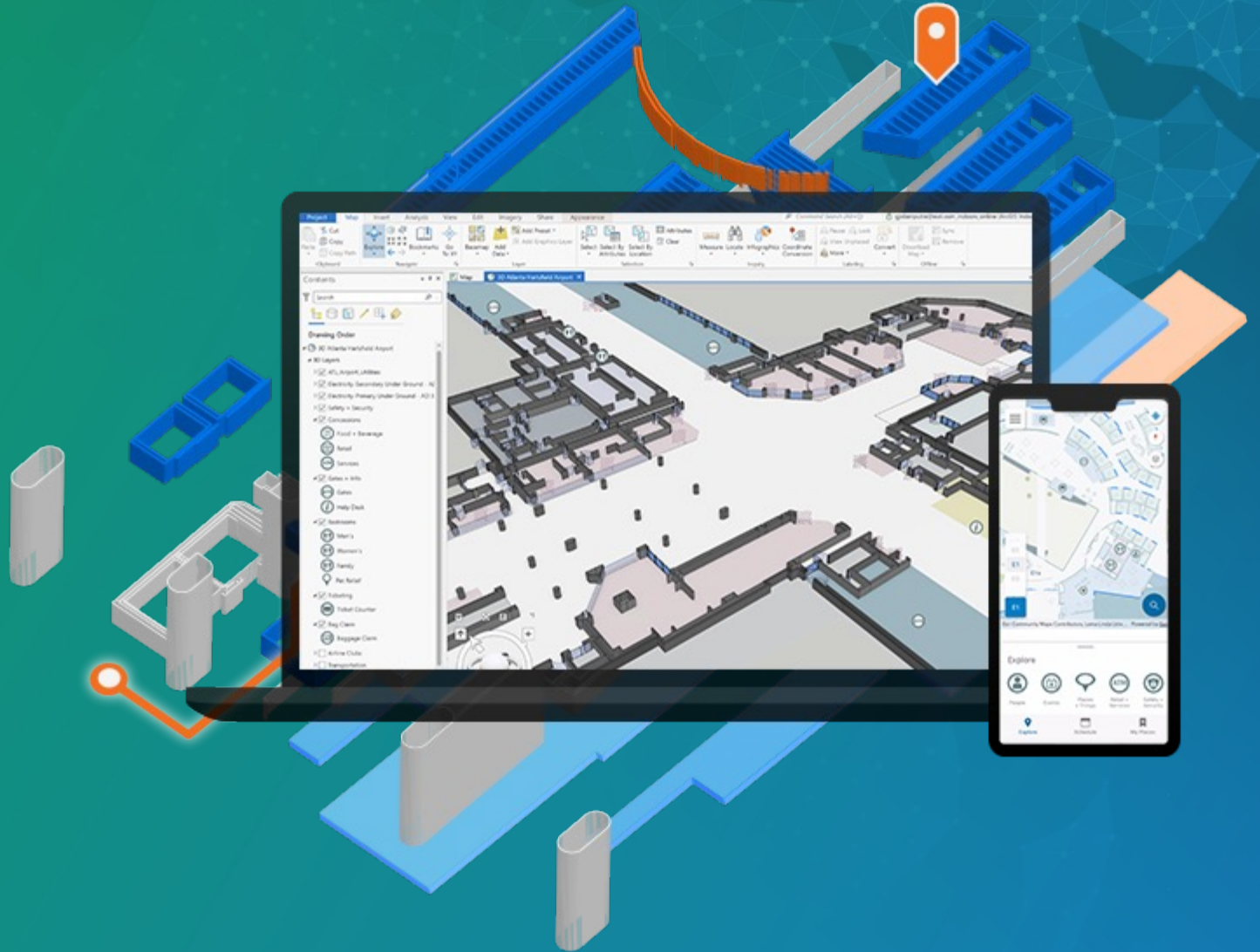
**Infraworks**  
Connecting Infraworks Directly to ArcGIS content



**ArcGIS for AutoCAD**  
Making the CAD designer a direct participant in GIS workflows

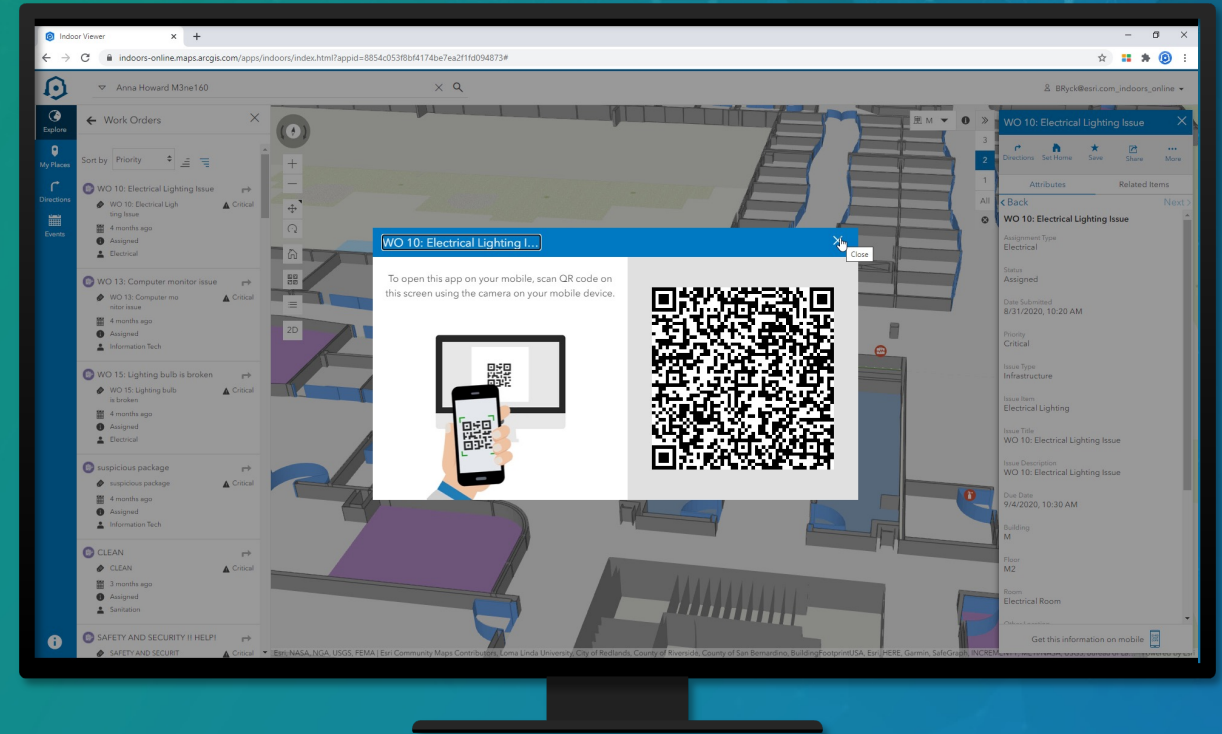


- BIM as Indoor Map
- Indoor GIS creates Floor aware maps



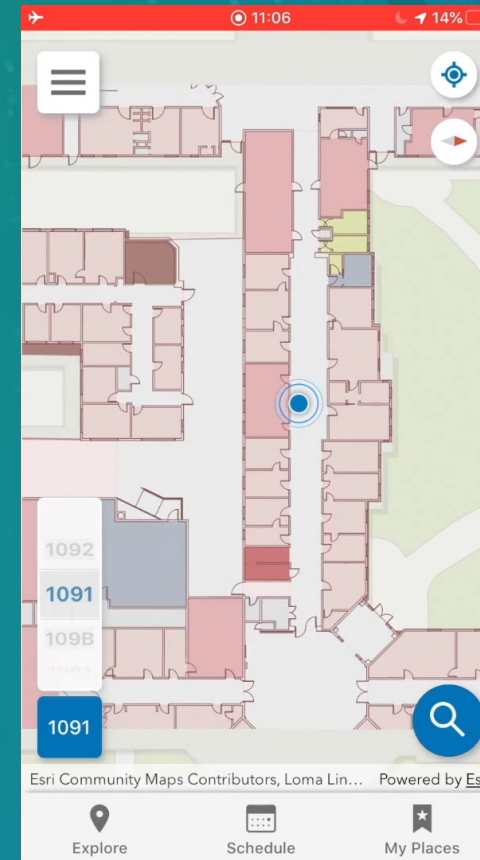
# ArcGIS Indoors Viewer

- Visualize sites, buildings, floors
- Discover and share facilities
- Find and reserve workspaces
- Navigate and manage workflows



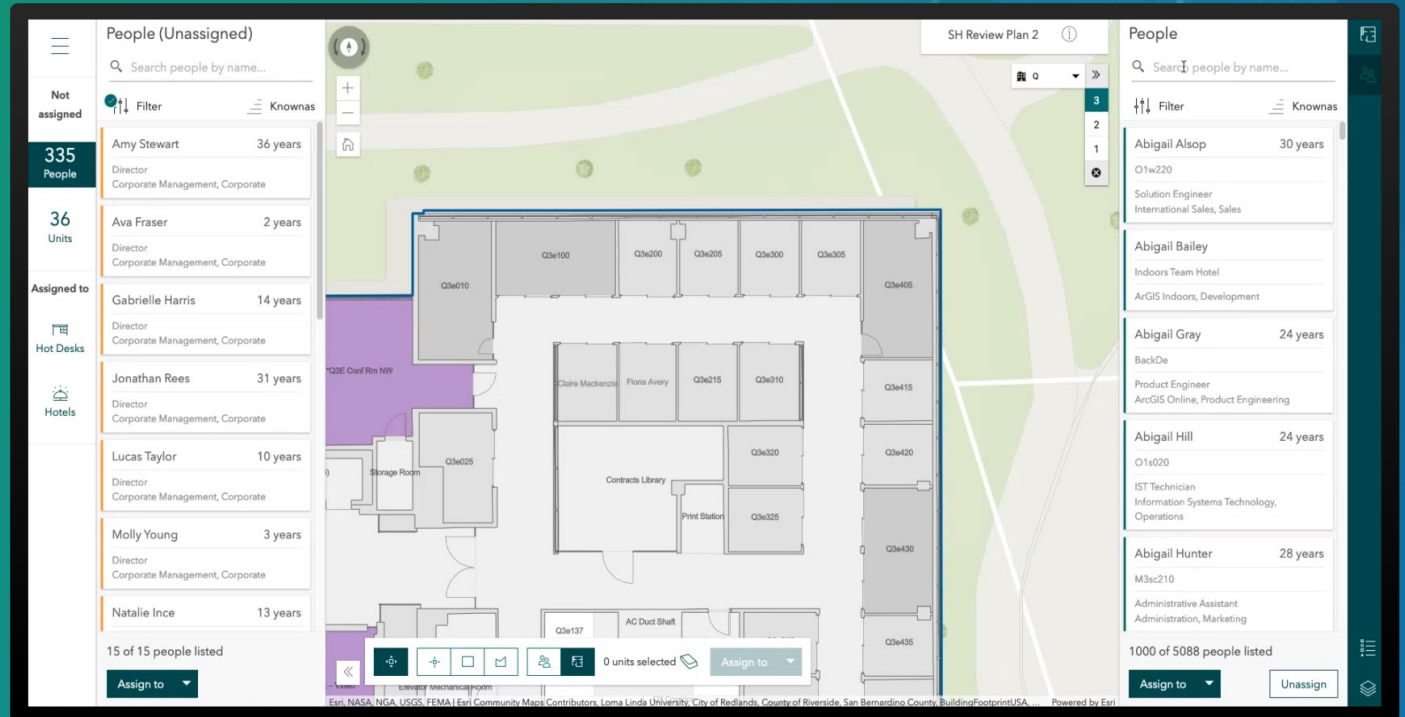
## ArcGIS Indoors Mobile

- Indoor positioning compatible
- Integrate calendar events
- Reserve conference rooms and office hotels



# Space Planner

- Create space plans
- Make space moves
- Share new plans



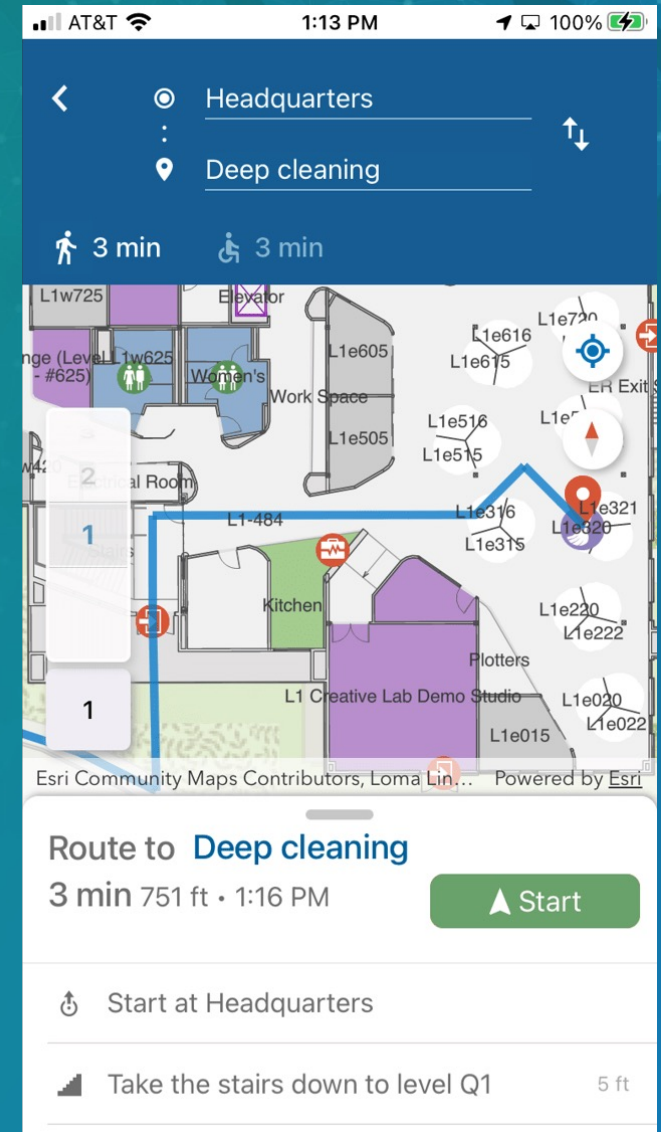
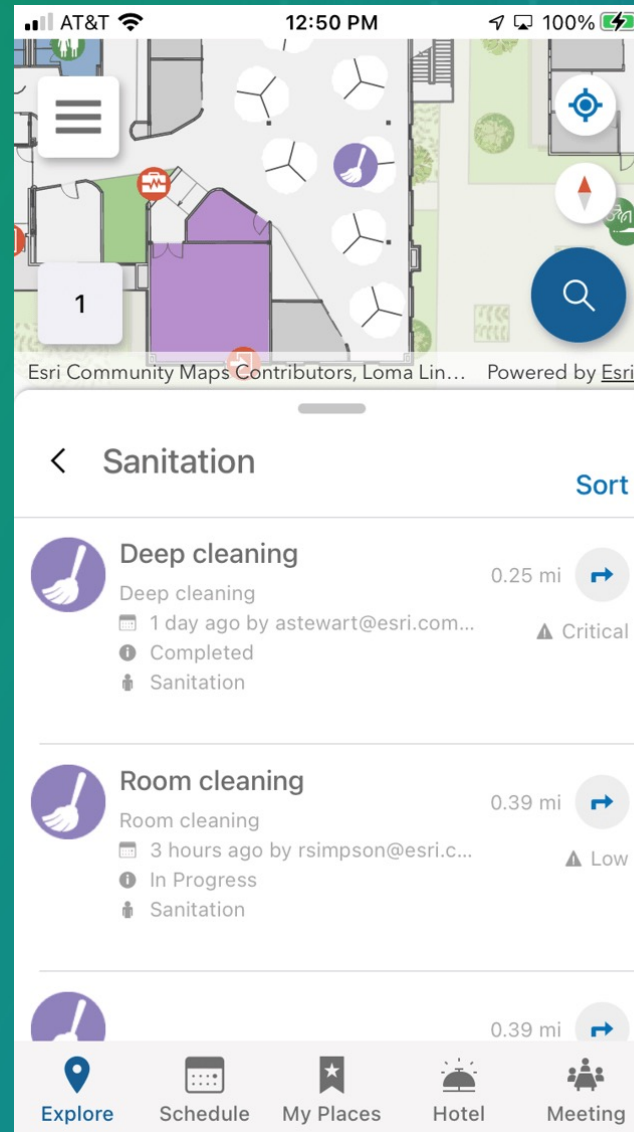
The screenshot displays the Esri Space Planner interface. The central part of the screen shows a 3D floor plan of a building with various rooms labeled, such as 'Contracts Library', 'Print Station', and 'Storage Room'. The interface is divided into several panels:

- Left Panel:** A sidebar with navigation options: 'Not assigned' (335 People), 'Assigned to' (36 Units), 'Hot Desks', and 'Hotels'.
- Top Left Panel:** A list of 'People (Unassigned)' with a search bar and filter options. The list includes:
  - Amy Stewart, 36 years, Director, Corporate Management, Corporate
  - Ava Fraser, 2 years, Director, Corporate Management, Corporate
  - Gabrielle Harris, 14 years, Director, Corporate Management, Corporate
  - Jonathan Rees, 31 years, Director, Corporate Management, Corporate
  - Lucas Taylor, 10 years, Director, Corporate Management, Corporate
  - Molly Young, 3 years, Director, Corporate Management, Corporate
  - Natalie Ince, 13 years, Director, Corporate Management, Corporate
- Top Right Panel:** A panel for 'SH Review Plan 2' with a search bar and filter options.
- Right Panel:** A list of 'People' with a search bar and filter options. The list includes:
  - Abigail Alsop, 30 years, Solution Engineer, International Sales, Sales
  - Abigail Bailey, Indoors Team Hotel, ArcGIS Indoors, Development
  - Abigail Gray, 24 years, Product Engineer, ArcGIS Online, Product Engineering
  - Abigail Hill, 24 years, IST Technician, Information Systems Technology, Operations
  - Abigail Hunter, 28 years, Administrative Assistant, Administration, Marketing

At the bottom of the interface, there are navigation and control buttons, including a search bar, a list of 0 units selected, and an 'Assign to' dropdown menu. The footer of the interface includes the text: 'Esri, NASA, NGA, USGS, FEMA | Esri Community Maps Contributors: Loma Linda University, City of Redlands, County of Riverside, San Bernardino County, BuildingFootprintUSA... Powered by Esri'.



# Workforce and work orders management







**Hesham Gamal Gaafar**  
Digital Twin Evangelist  
| AEC Lead @ Esri SA | ...



[Hesham.Gaafar@EsriSaudiArabia.com](mailto:Hesham.Gaafar@EsriSaudiArabia.com)