



GWFF

GEOSPATIAL WORLD FORUM

[CLICK TO KNOW MORE](#)

Integrating the climate data into the design and operation of industrial infrastructure to increase the resilience

Geospatial World Forum 2024

May 27, 2024

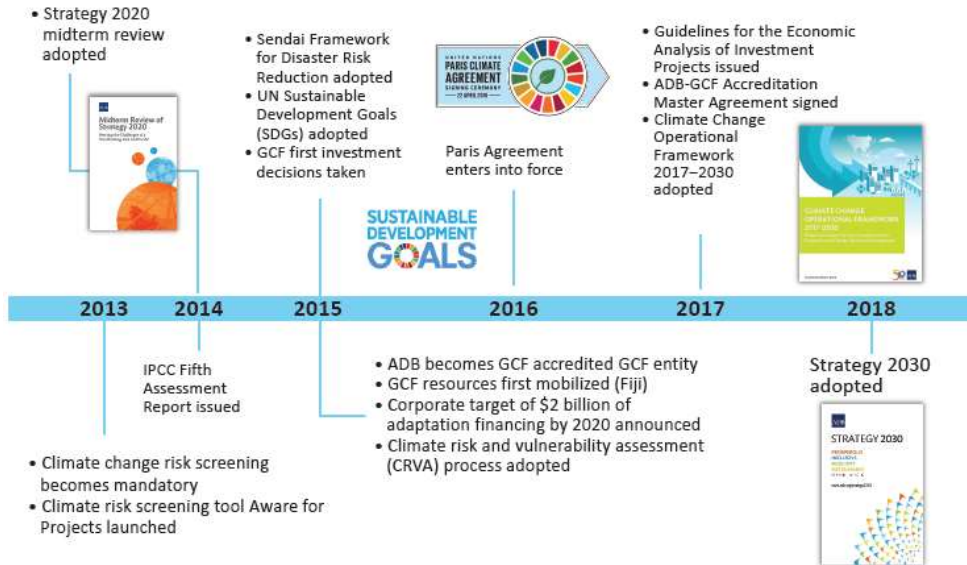
Building on belief



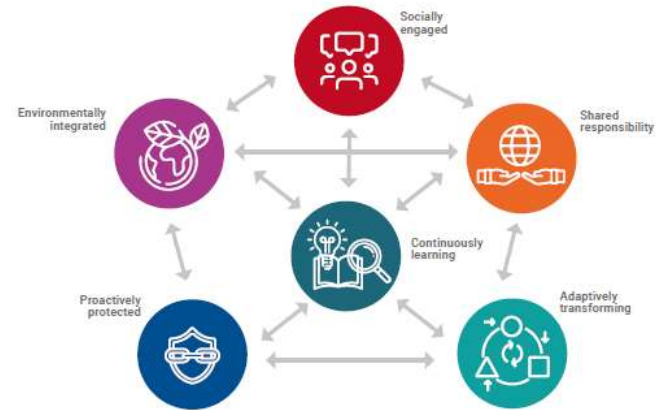
Resilience infrastructure

- A system is resilient if it can adjust its functioning prior to, during, or following events, and thereby sustain required operations under both expected and unexpected conditions.

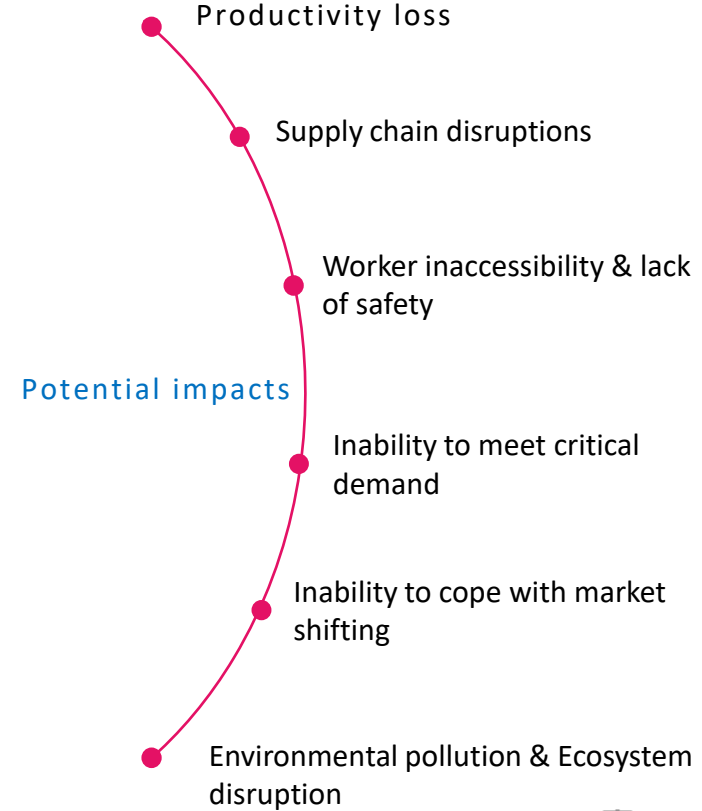
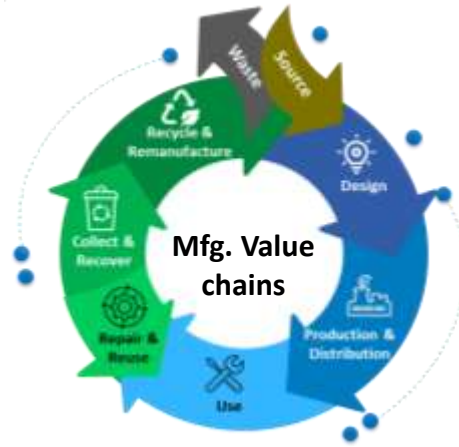
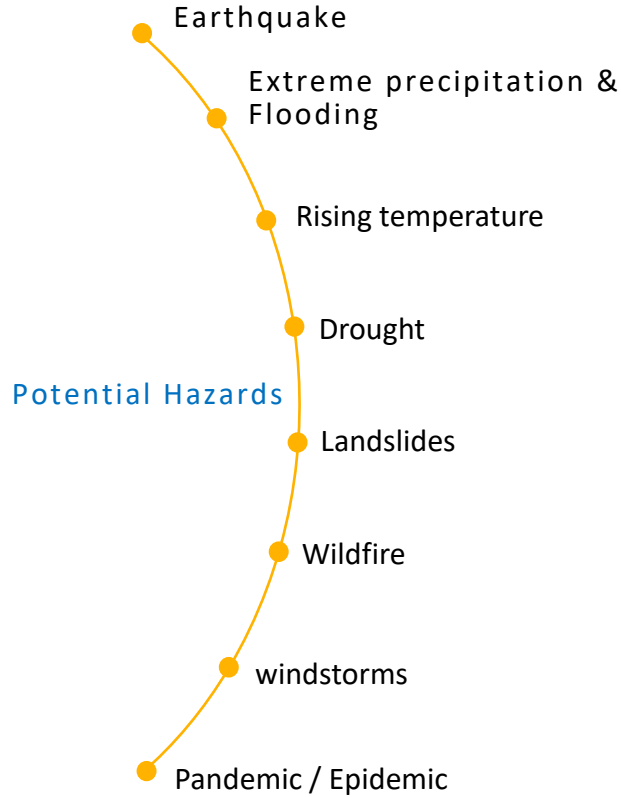
Journey of International agencies



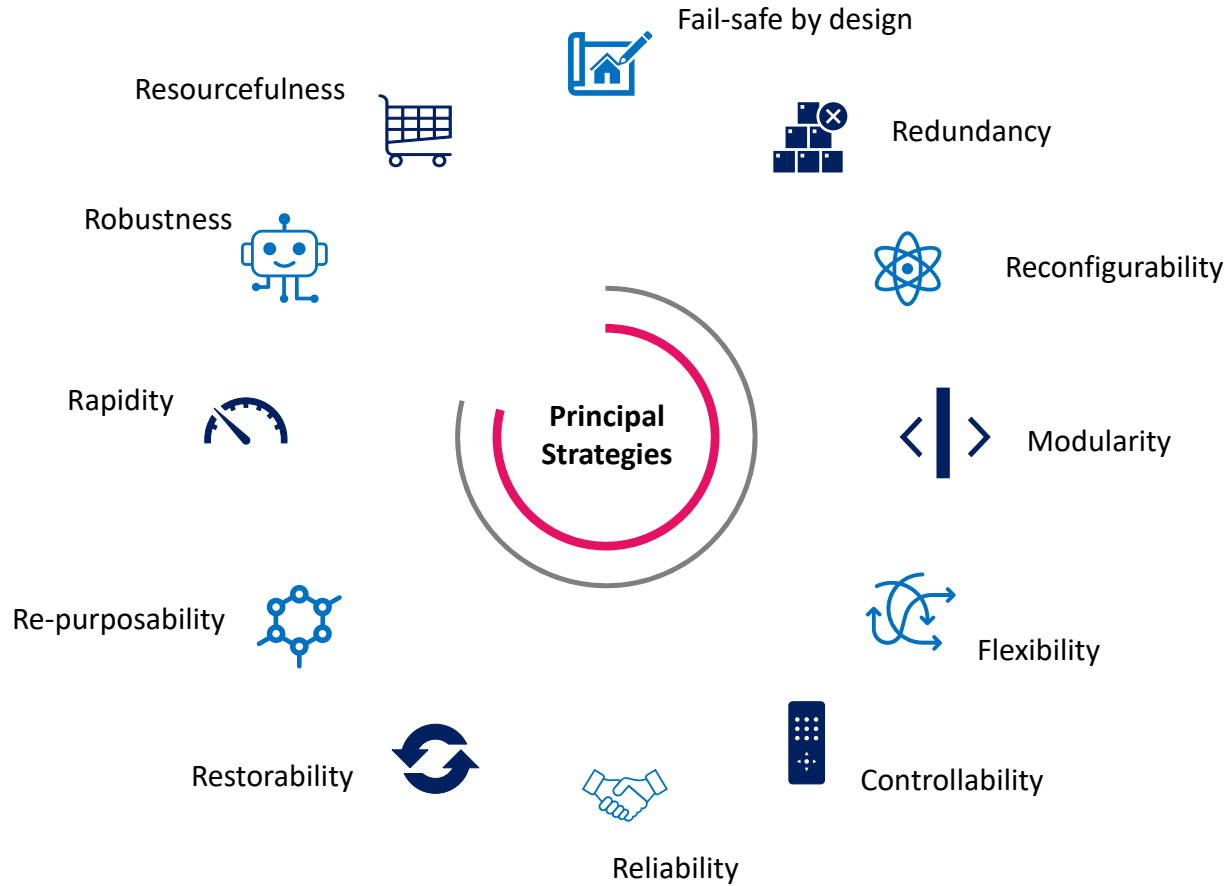
6 Principles set by UNDRR



Today's manufacturing industry

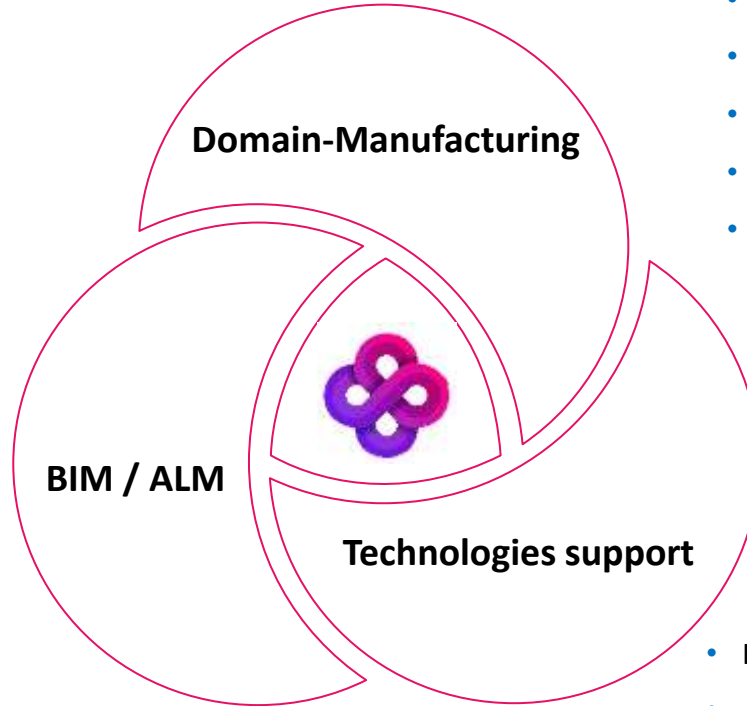


Principal strategies applied



TCS framework for design

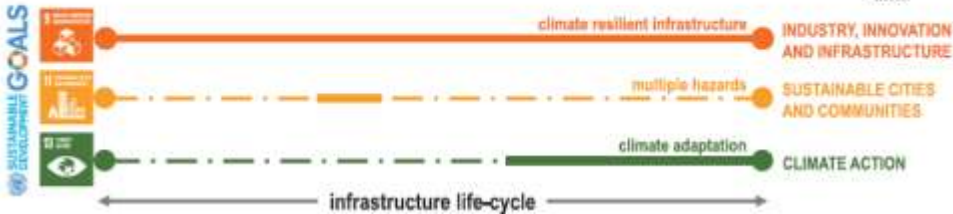
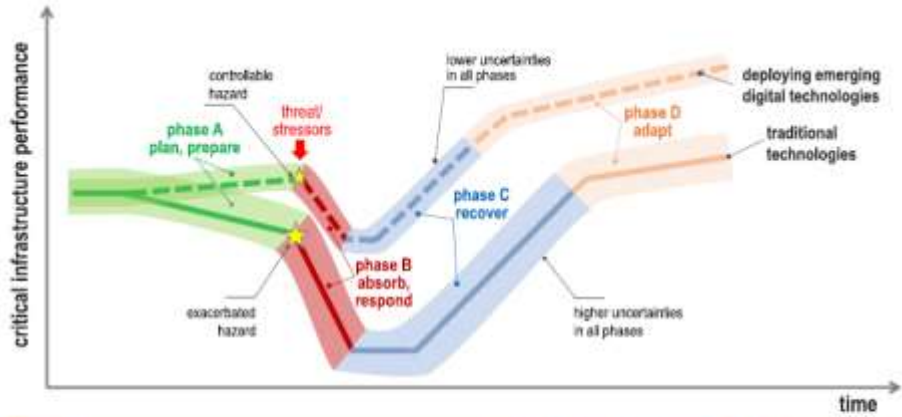
- Smart plant
- Asset lifecycle management
- Simulations
- AR / VR / Mixed reality
- Integration support
- Emergency response plan



- PLM
- ERP
- Program management
- Document management
- CMMS & CAFM

- Internet of Things (IoT)
- Artificial intelligence (AI) and Machine learning (ML)
- Digital Thread
- Digital Twin
- Automation & Robotics

Benefits



- Pre-disaster plan will give the signal how early we can proactive
- Post-disaster recovery plan will give you how quickly we can reactive
- Pivot quickly to keep operations moving
- Monitor and adjust operations with improved visibility
- Cost benefit ratio would be increased if consideration made for resilient industry infrastructure design

Thank you