



[**CLICK TO KNOW MORE**](#)



 WINDOVER

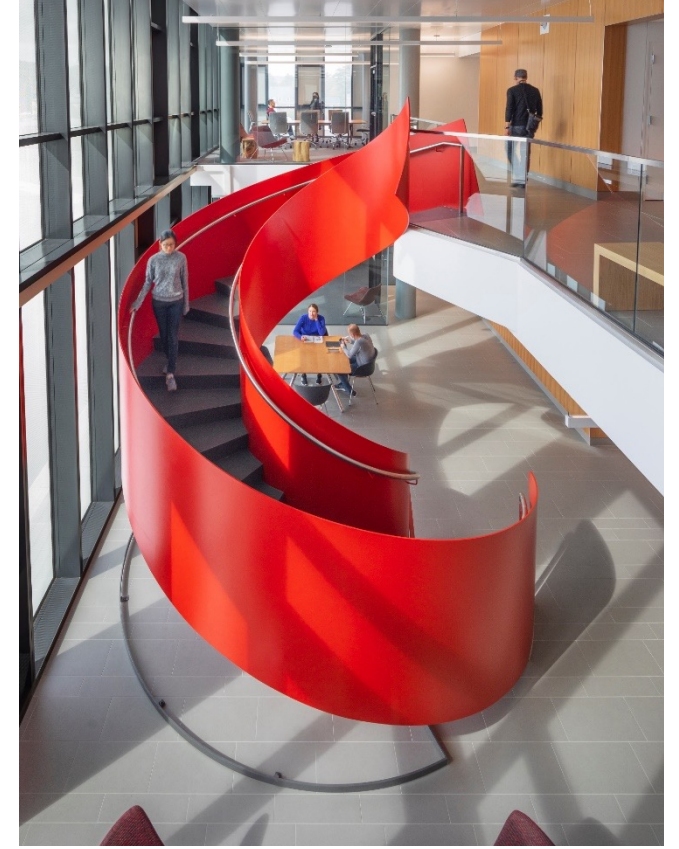
13-16 MAY 2024 | ROTTERDAM

**THEME - GEOSPATIAL TRANSITION:
POWERING THE WORLD ECONOMY**

**Redefining what is
possible with Data,
Generative AI and
Digital Twins**

**Amr Raafat, Chief Innovation officer
Windover, United States**



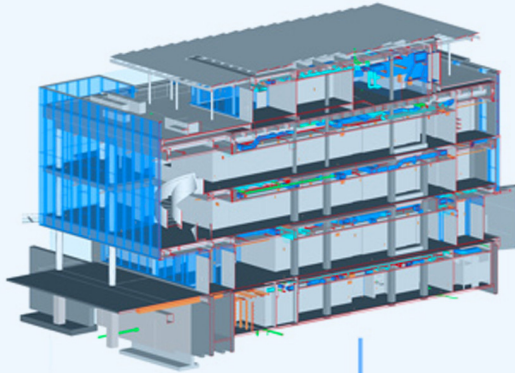
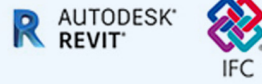


IDEA

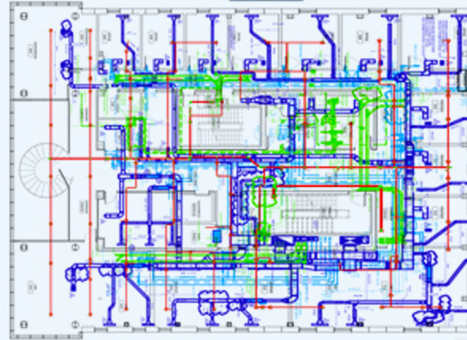
Innovations for Design, Engineering and Automation™



BIM



+



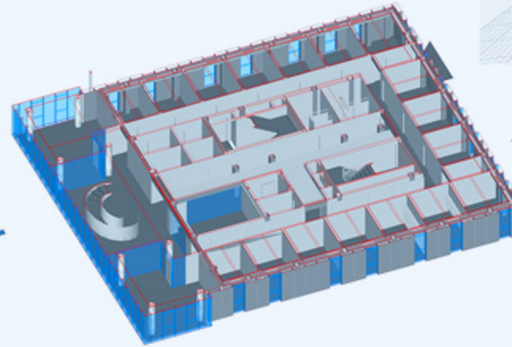
2D APRS

Building Regulations and Code Checking Automated System

BIM & APRS Guidelines & Standards

List of Regulation	
C.3.2.1	Headroom - Room, Access Route, Circulation Space
C.3.2.2	Headroom - Parking Lot, Driveway
C.3.3.1	Ceiling Height - Rooms
D.2.3 Minimum Accessible Provision	
D.2.3	Provision of accessible guestrooms in hotels, chalets, boarding houses
D.2.3	Provision of elderly friendly guestrooms in hotels, chalets, boarding houses
D.2.3	Provision of accessible guestrooms in service apartments
D.2.3	Provision of wheelchair space
D.4.1 Accessibility Around and Within the Buildings	
D.4.2	Primary Accessible Routes for wheelchair users - 1000mm
D.4.4	Clear Door Opening
D.4.4.6	Minimum Manoeuvring Space at door/push side
	Minimum space adjacent to the leading edge of the door/push side
	Minimum Manoeuvring Space at door/pull side
	Minimum space adjacent to the leading edge of the door/pull side
D.4.5.1	If change in level is 0-15mm, Ramp Gradient 1:2
	If change in level is 15-20mm, Ramp Gradient 1:3
	If change in level is 20-200mm, Ramp Gradient 1:10
	If change in level is more than 200mm, Ramp Gradient 1:12
D.4.6.1.2	Size of Landing Provided for a ramp
D.4.6.1	Handrail Both Sides of Ramp & Continuous
D.4.6.2	Handrail extension beyond the top and bottom of the ramp
D.3.1 Accessible Lift Provided for Transportation	
D.4.9.1.3	Lift Lobby Manoeuvring Space
D.4.9.2.1	Lift Car Dimension
D.4.9.3.1	Clear Opening Lift Door
E.3.1.3	Clear Landing Width
E.3.1.4	No Step/Chop @ Landing
E.3.1.5	Handrail Provided to 1 side
E.3.1.6	Handrail height Above Push Line

AI | Generative AI & Generative Design



Windover AI

Windover Construction, Inc. © 2024 , All Rights Reserved



Login to Access BIM-AI Portal

Username

Password

[Forgot Password](#)

Login

Building Smarter: Elevate Your Design with AI-Enhanced BIM

The AI-enabled BIM platform efficiently processes building permit applications by conducting AI-powered building code compliance checks on 3D models. It enhances compliance, streamlines project reviews, and significantly improves the accuracy and efficiency of the permitting process.

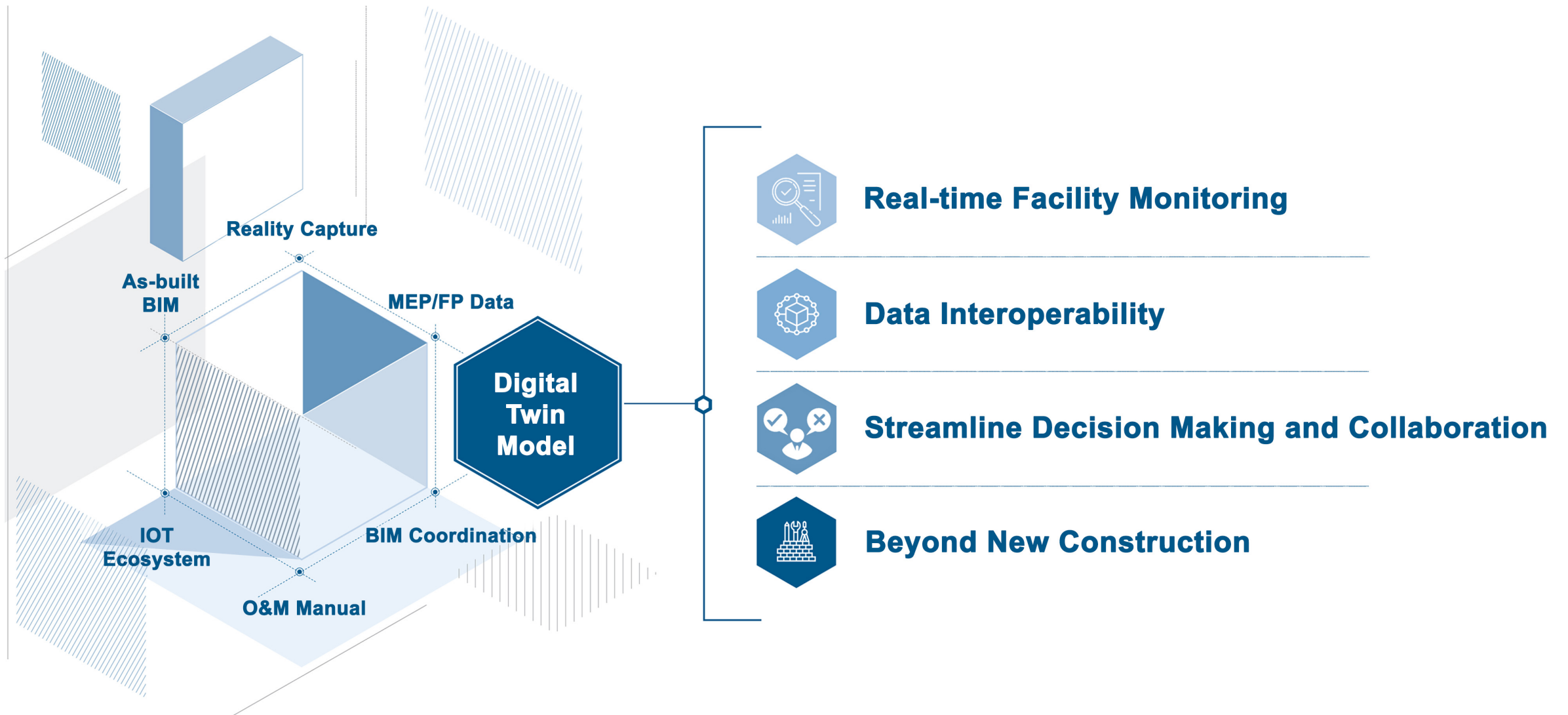
Quick Link

Social Media

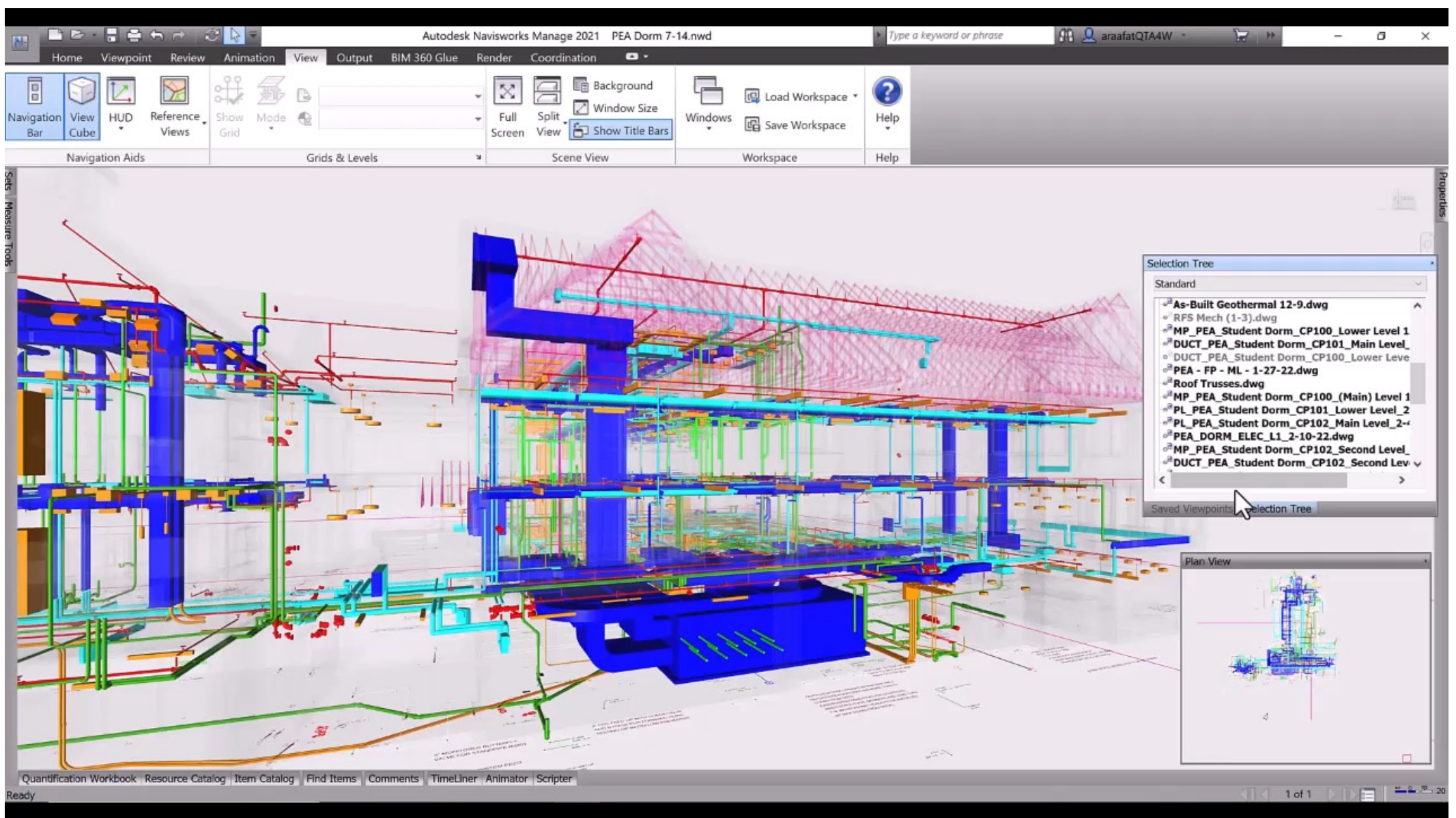




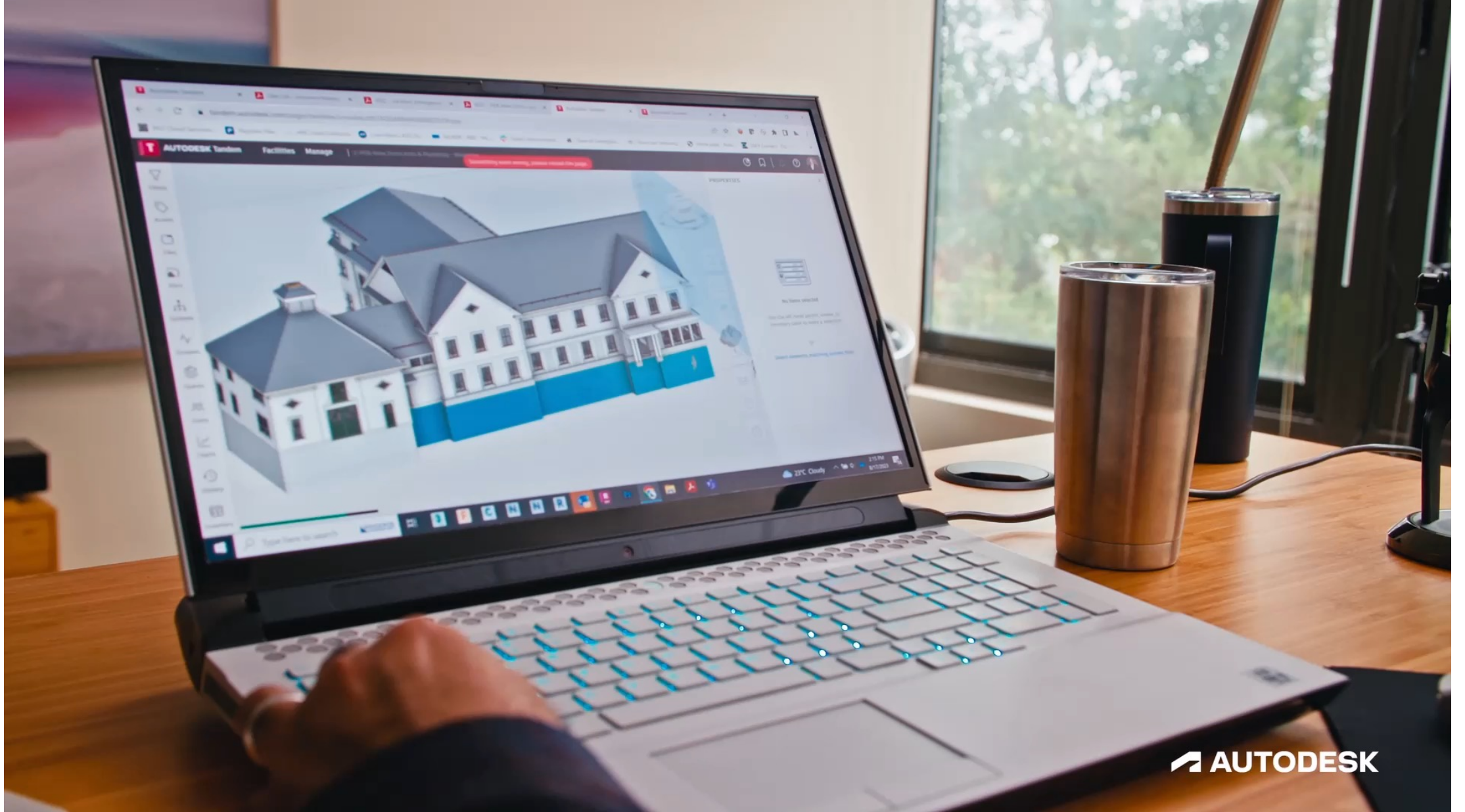
Windover Construction, Inc. © 2023, All Rights Reserved



Windover Construction, Inc. © 2023, All Rights Reserved

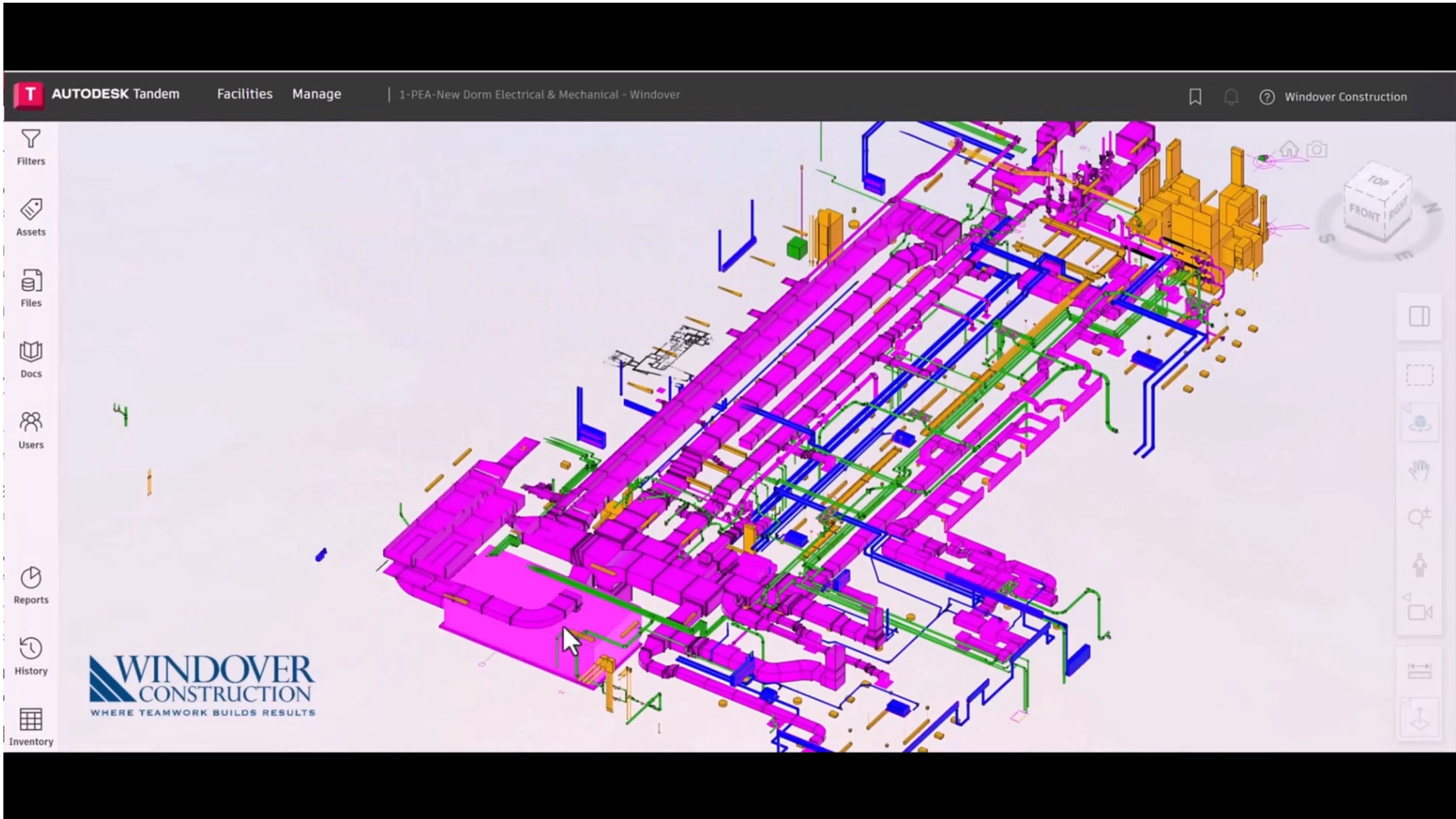


Windover Construction, Inc. © 2023, All Rights Reserved



 **AUTODESK**

Windover Construction, Inc. © 2023, All Rights Reserved



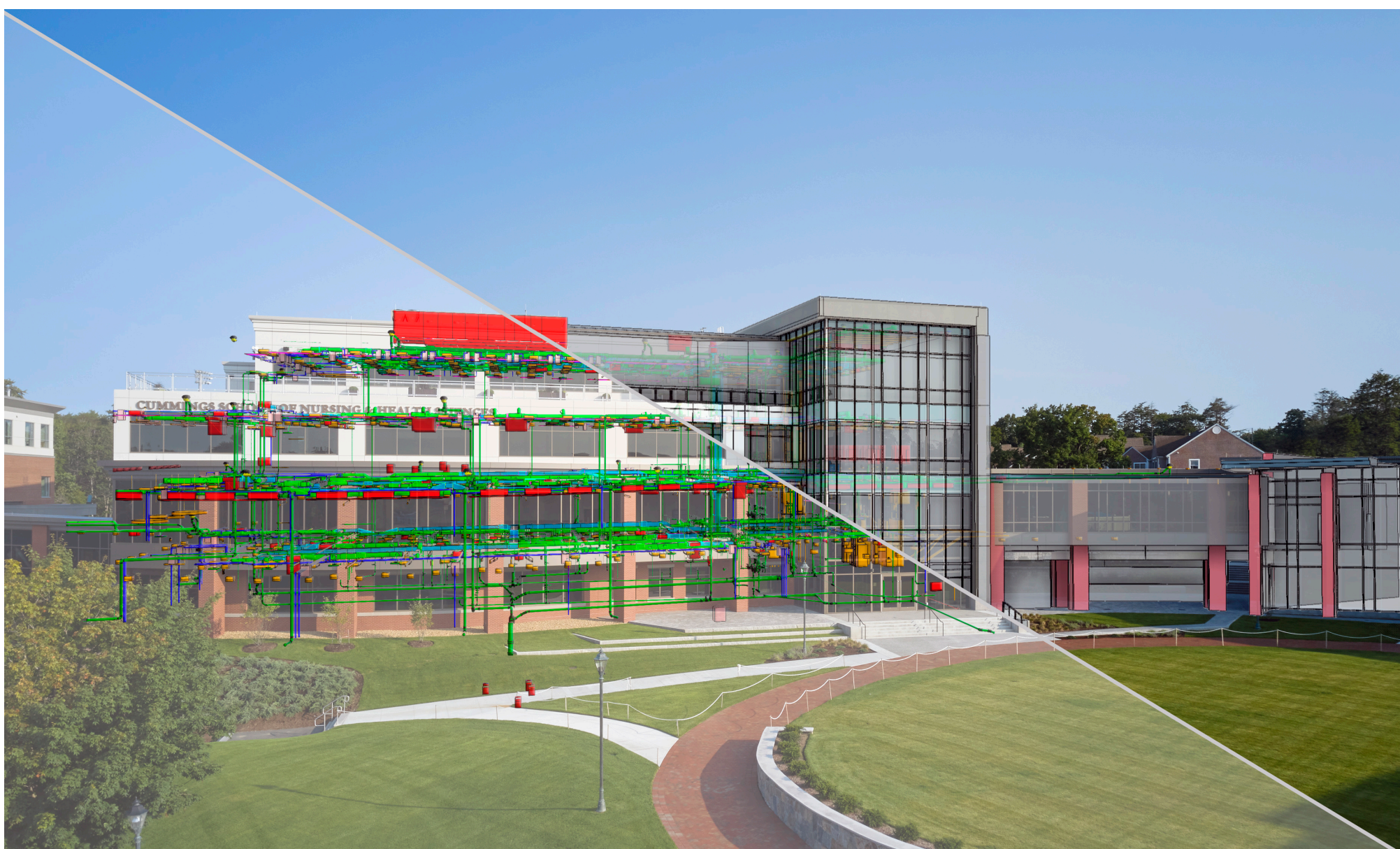
Windover Construction, Inc. © 2023, All Rights Reserved



Windover Construction, Inc. © 2023, All Rights Reserved



Windover Construction, Inc. © 2023, All Rights Reserved



Windover Construction, Inc. © 2023, All Rights Reserved

AUTODESK Tandem | Facilities | Manage | 1-PEA-New Dorm Electrical & Mechanical - Windover

Windover Construction

The screenshot displays the Autodesk Tandem interface. On the left is a navigation sidebar with icons for Filters, Assets, Files, Docs, Systems, Streams, Spaces, Users, Charts, History, and Inventory. The main area shows a 3D cutaway of a building with complex mechanical systems (ducts, pipes, and equipment) rendered in various colors (purple, blue, green, yellow). On the right, a 'PROPERTIES' panel is open for an element named 'ERU-1'. The panel includes tabs for 'ELEMENT' and 'TYPE', and a section for 'ASSET PROPERTIES'. Below this, there are sections for 'Common' and 'All Disciplines'.

Common	
Name	ERU-1
Level	M-HVAC-DUCT
System Class	Select System Class
Classification	Energy Recovery U...

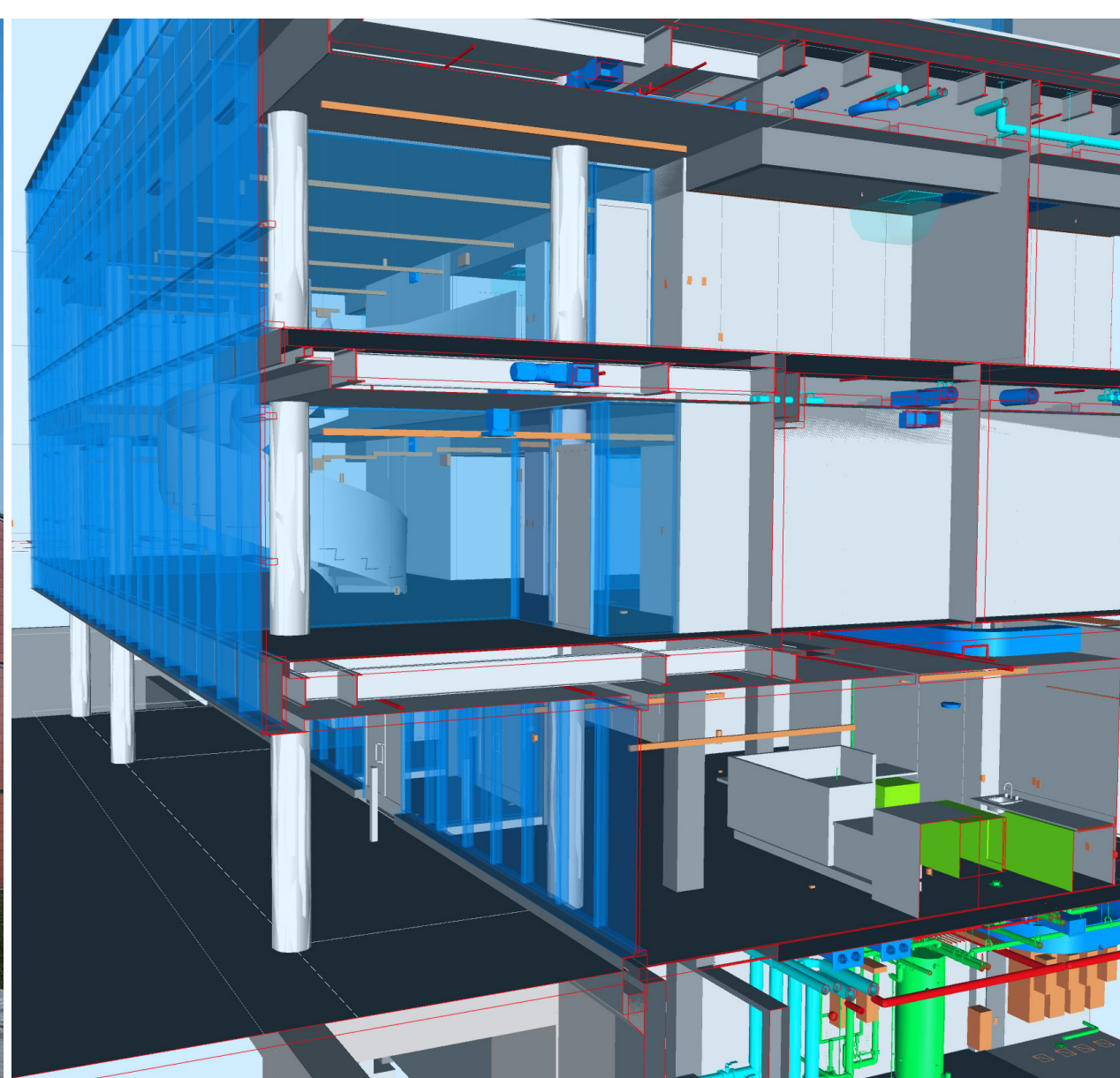
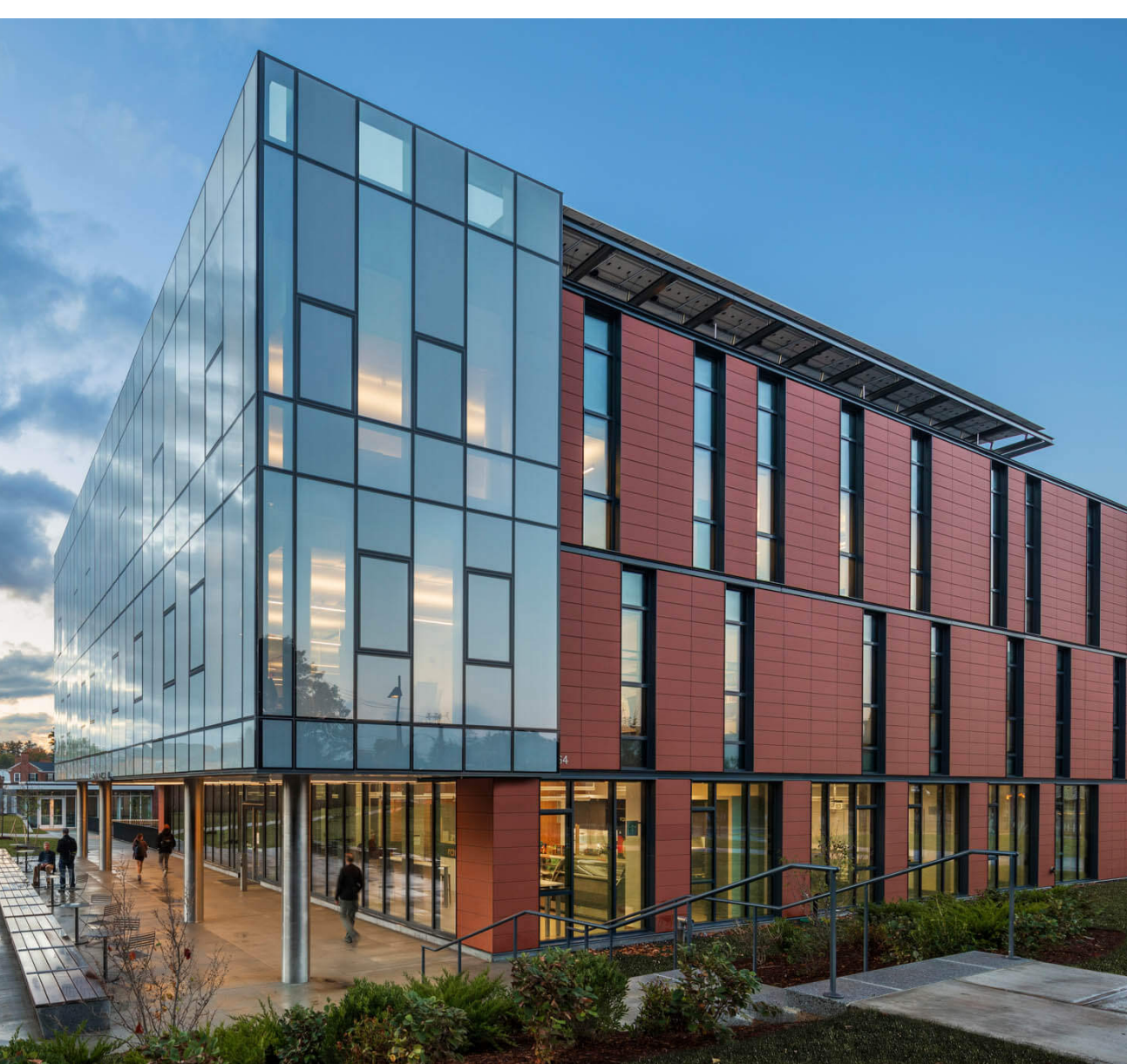
All Disciplines	
O&M Manual	Dan Cel - Innovent ...
24 HR Emergency Contact	DanCel - Contact Inf...
Install Date	9/1/2022
Manufacturer	Innovent
Manufacturer Warranty	Dan Cel - Innovent ...
Model Number	ERU-OU-WH-9500-HP-HG-208
Serial Number	8644122.02
Warranty Exp Date	9/1/2023
Warranty Letter	DanCel - Warranty L...

Windover Construction, Inc. © 2023, All Rights Reserved

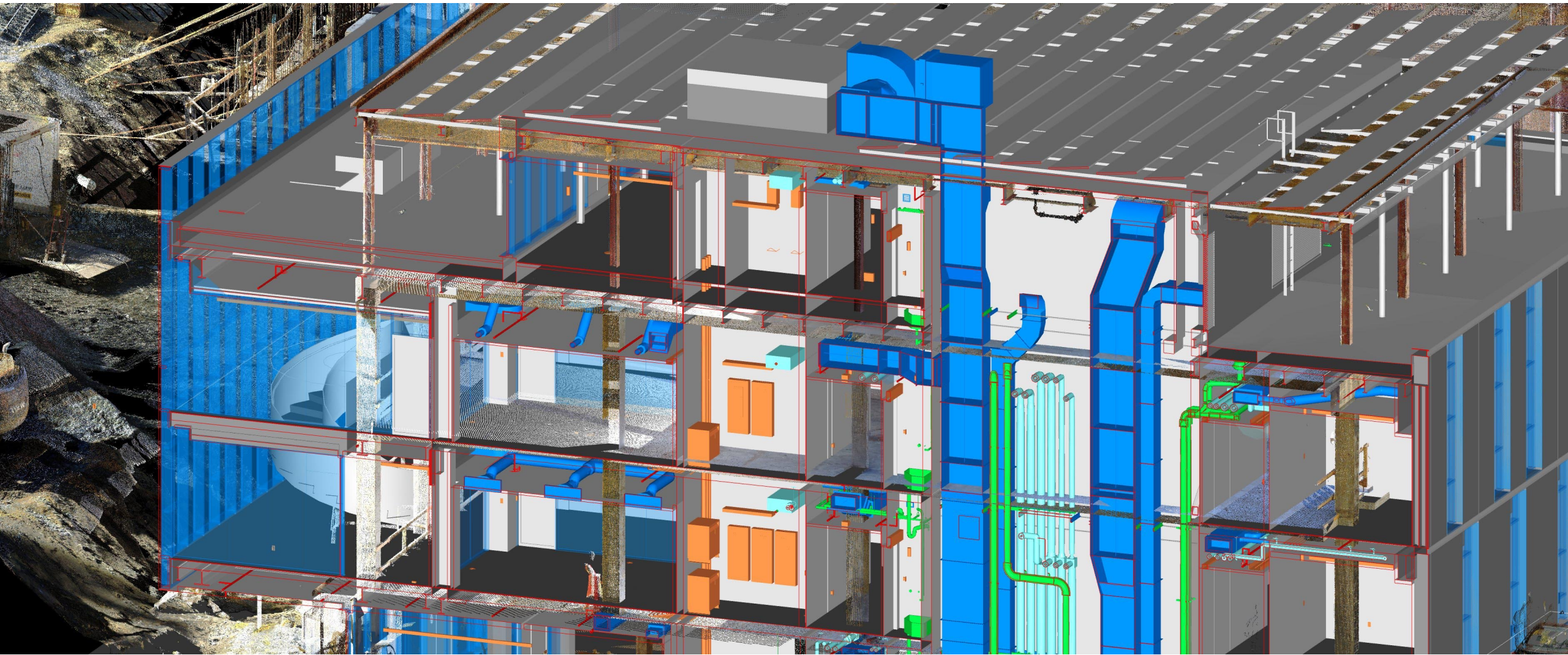


Windover Construction, Inc. © 2023, All Rights Reserved

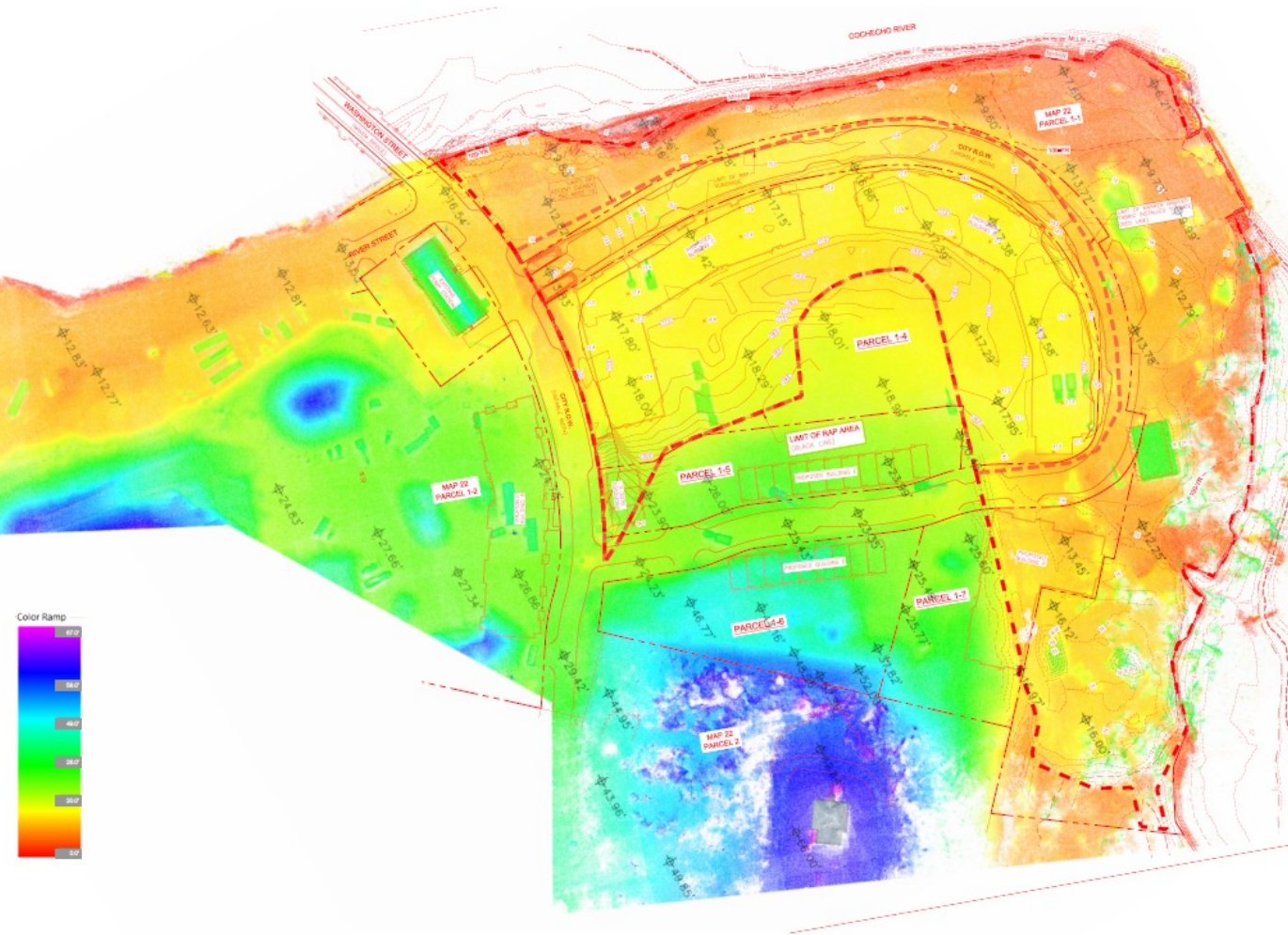
Begin with the end in mind



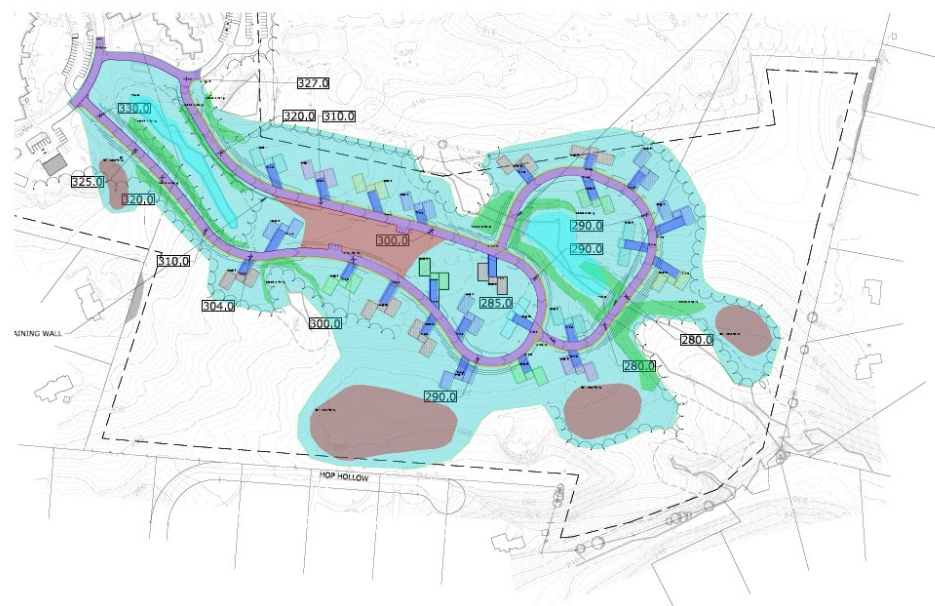
Windover Construction, Inc. © 2023, All Rights Reserved



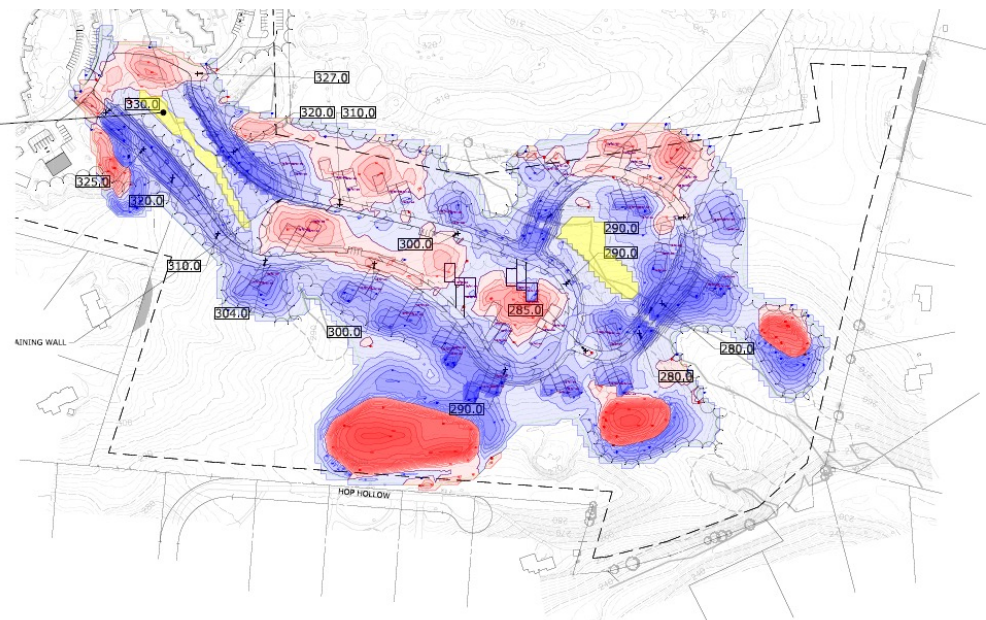
Windover Construction, Inc. © 2023, All Rights Reserved



- Topsoil
- Bit Pavement
- Concrete Walk
- Driveway
- Southern Villa Green
- Wetland Buffer
- Planting
- Basin
- Wetland Planting
- Protected
- Slab @ 315
- Slab @ 311
- Slab @ 307
- Slab @ 303
- Slab @ 301
- Slab @ 299
- Slab @ 297
- Slab @ 295
- Slab @ 293
- Slab @ 289



NO WORK





Windover AI