



[\*\*CLICK TO KNOW MORE\*\*](#)



# **WeatheO: AI-Driven satellite analysis for climate change mitigation and adaptation**

2024. 05. 15.

**Yeji Choi**

Head of Earth Intelligence Department, SI Analytics



# Environmental issues are increasing dramatically.

We need to understand Earth better than before  
Past data can not predict current up-coming event



USA, Flood (2023. 7)



Italy, Flood (2023. 5)



Peru, Landslide (2023. 2)



인도 서부 구자라트주에선  
아스팔트 녹아 내리고  
신발도 '찍' 도로에 달라붙어

India, Heat wave (2023. 5)

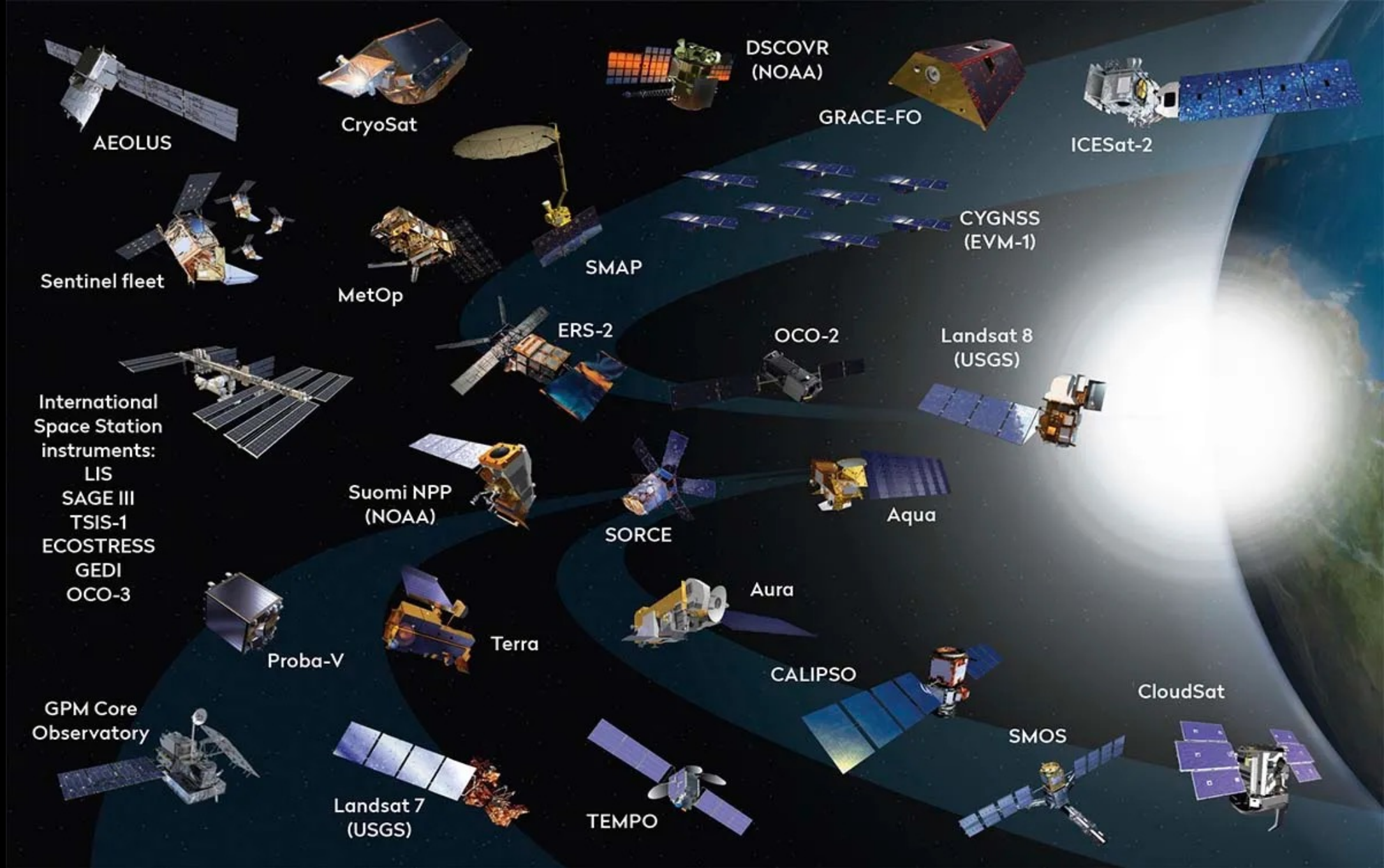


Australia, Cold wave (2023. 5)

Providing **Key Solutions** for **better Decision**  
through **Earth Observation** and **AI**



# Earth Observation from space



Artist's illustration of satellites monitoring climate change from Earth orbit. Credit: Paul Wootton

# We monitor the Earth with satellites and AI, and solve humanity's challenges.



## Taking a long time

Reduce time to analyze satellite imagery.  
Enable a person to analyze more images.

## Missed by a person

Less monitored regions.  
Uninterested regions.

## Too large

Monitor state/city-level targets.  
Analyze more than 100 regions.

## Hard to access

Troubled regions.  
Regions requiring high exploration costs.



# OVISION Earth

For Earth, For Us

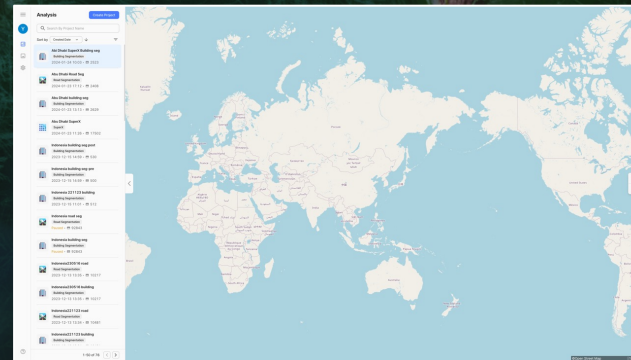
To provide solutions for global environmental issues through Earth observation data analysis

## Features

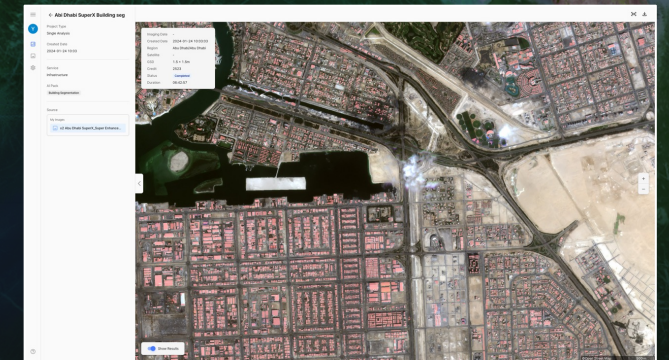
- A Web-based GIS Intelligence Platform
- Easy satellite image data upload
- Automatic integration of massive satellite images with GCP buckets
- Support for AI Packs tailored to analysis purpose (SuperX, Detection, Segmentation, WeatheO)

## Service Type

- SaaS



Base map image upload support



AI Pack support for analysis purposes



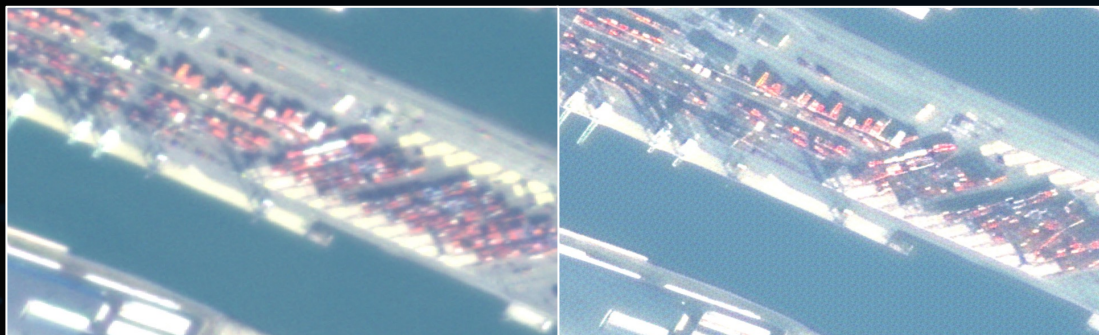
# SIA SuperX

## Enhancing Earth Clarity

Providing high quality satellite imagery that outpaces the development of satellite hardware.

### Features

- Can process 10,000 km<sup>2</sup> in approx. 4,390 seconds (0.43 sec/ km<sup>2</sup>)
- Daily 177K km<sup>2</sup> Capability (1 DGX A100 server)



Original (GSD: 3.8m-4.2m)

SIA SuperX (GSD  $\approx$ 1.9m-2.1m)



Original (GSD: 3.8m-4.2m)

SIA SuperX (GSD  $\approx$ 1.9m-2.1m)



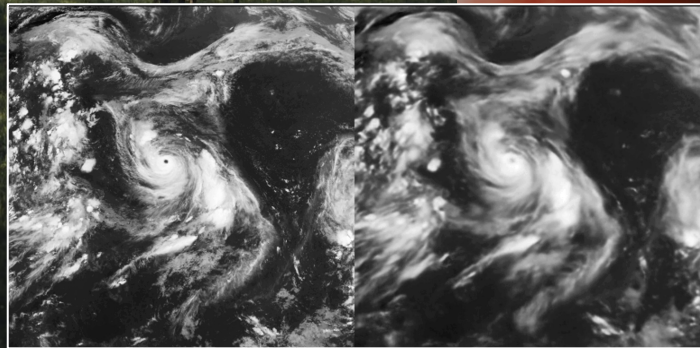
# WeatheO

## Climate Change Prediction Solution

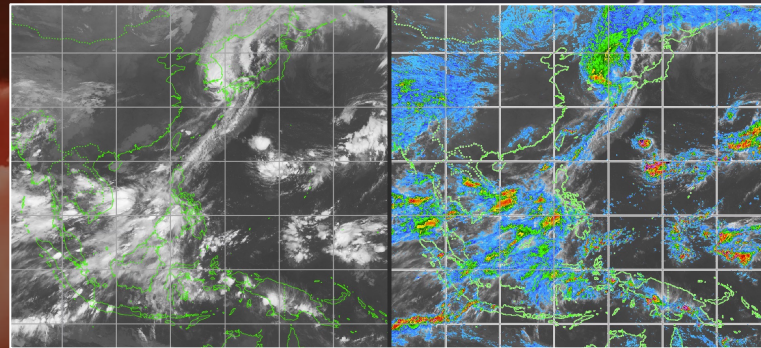
A solution for predicting and responding to events caused by climate changes.

### Features

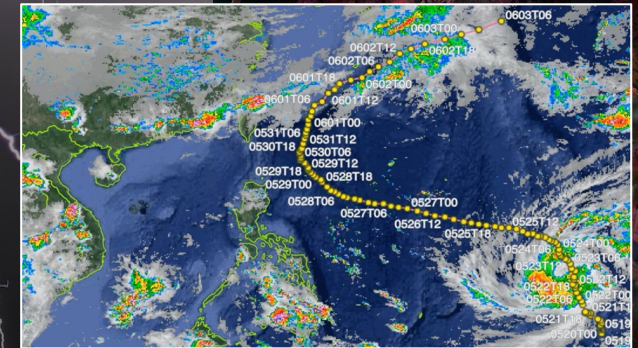
- Collecting diverse weather and climate information based on satellite imagery
- Rapid assessment and support for natural disasters, large-scale fires, typhoons, floods using satellite imagery
- Providing weather forecasts and supporting the productivity improvement of the agricultural and marine industries



WeatheO\_Cloud



WeatheO\_Rain



WeatheO\_Typhoon

# SIA TECH

---

Providing **Key Solutions** for **better Decision**  
through **Earth Observation** and **AI**

C H A P T E R 1

Layers **SIA**  
XC02.2  
4,793 rows

Point  
Basic  
Grid  
Columns  
Lat: float  
Lon: float  
Color

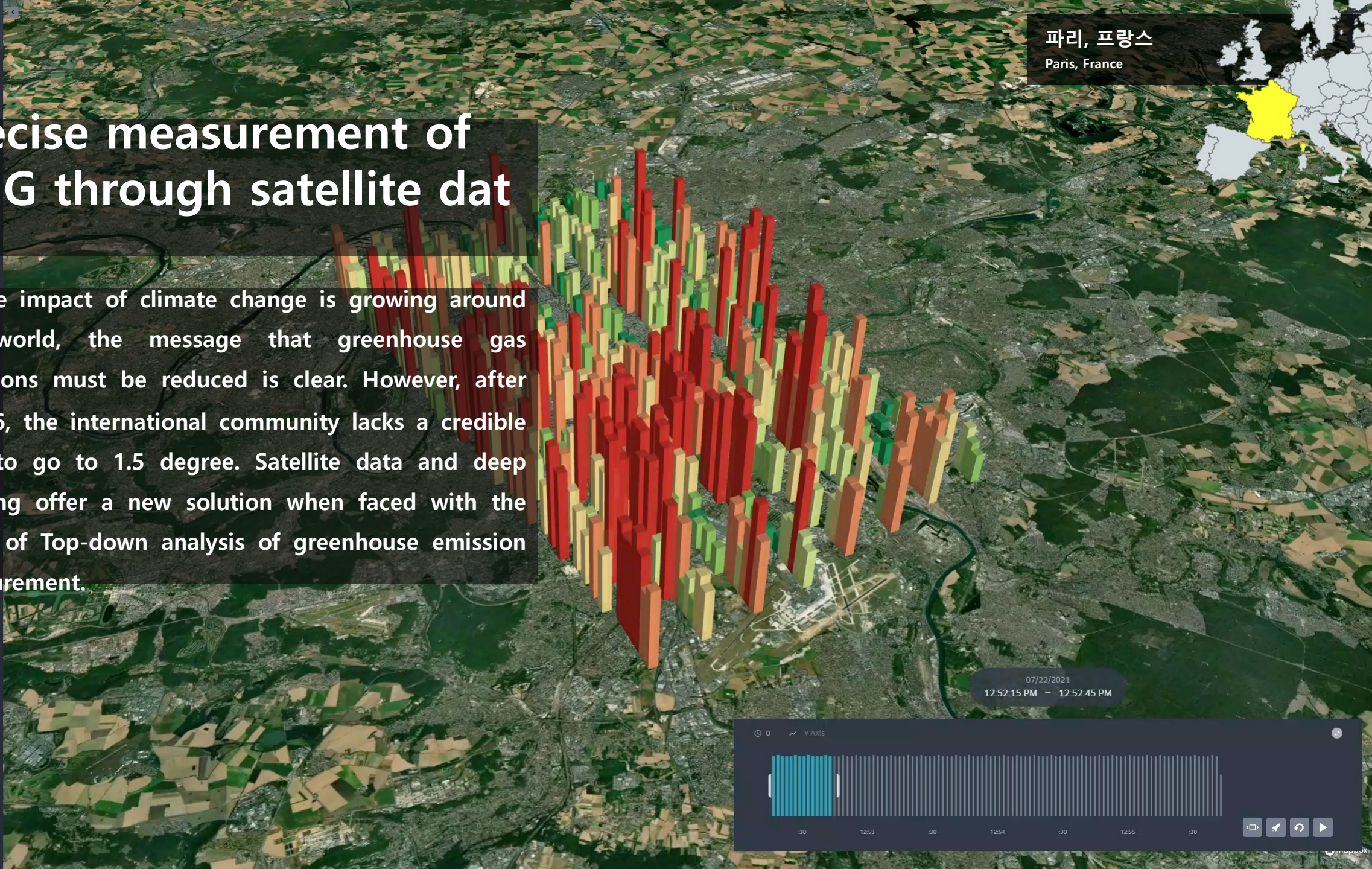
Radius  
Hexagon Radius (Km)  
Height  
Height Multiplier  
+ Add Layer

Layer Blending  
normal

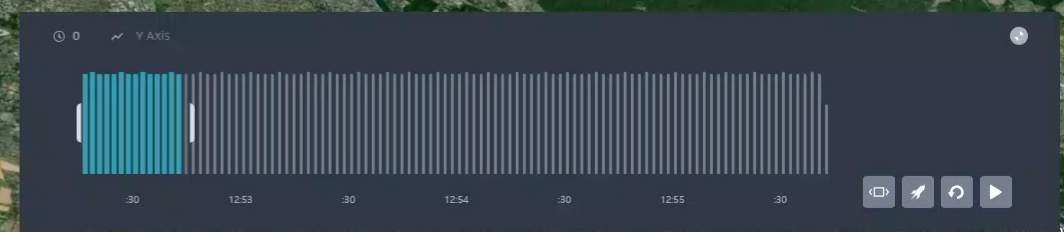


# Precise measurement of GHG through satellite data

As the impact of climate change is growing around the world, the message that greenhouse gas emissions must be reduced is clear. However, after COP26, the international community lacks a credible plan to go to 1.5 degree. Satellite data and deep learning offer a new solution when faced with the limits of Top-down analysis of greenhouse emission measurement.

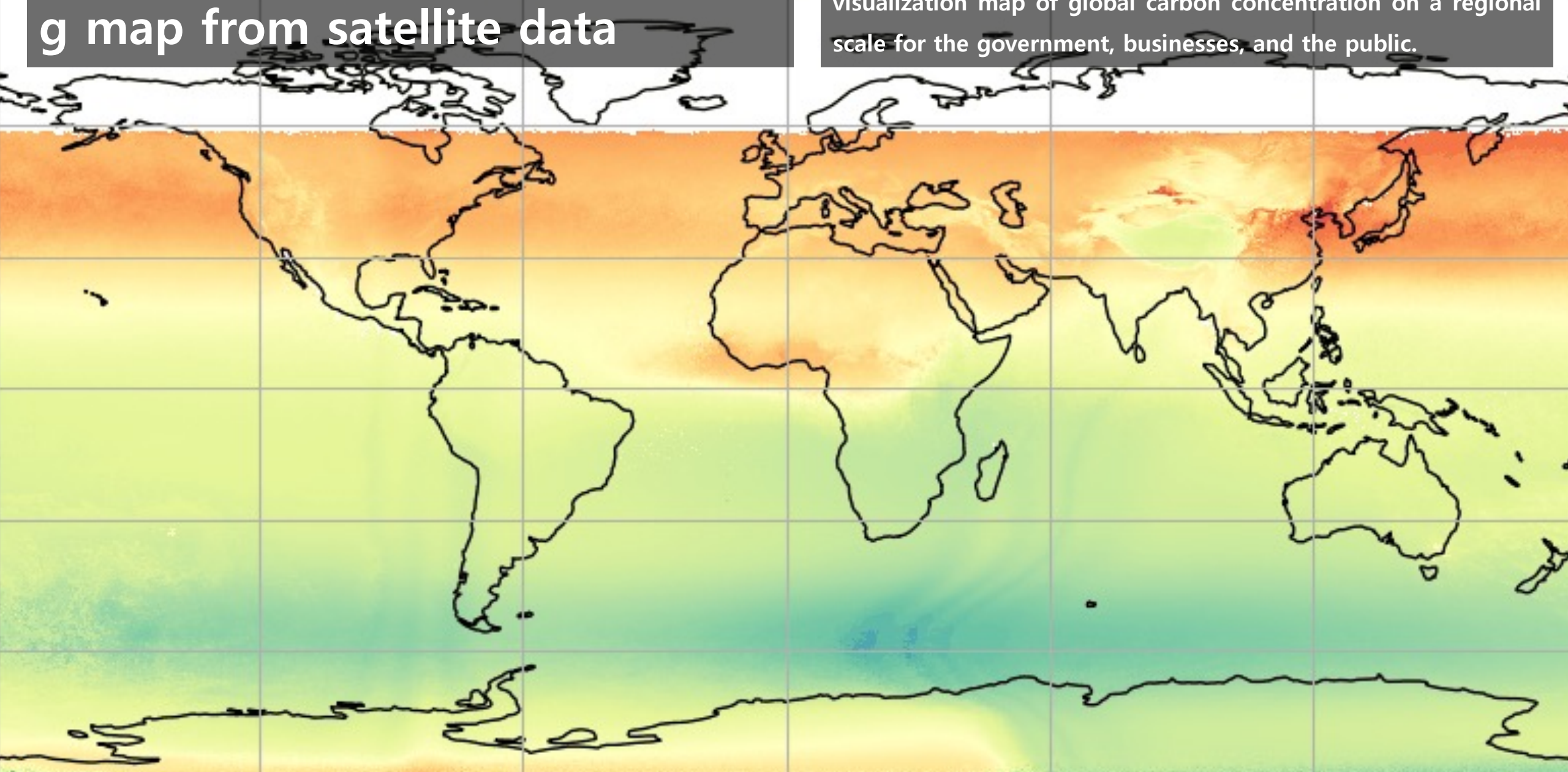


07/22/2021  
12:52:15 PM - 12:52:45 PM



# Generate GHG global monitoring map from satellite data

SI Analytics will provide carbon concentration data and a visualization map of global carbon concentration on a regional scale for the government, businesses, and the public.



# Our Products with **Weather Intelligence AI** Solution

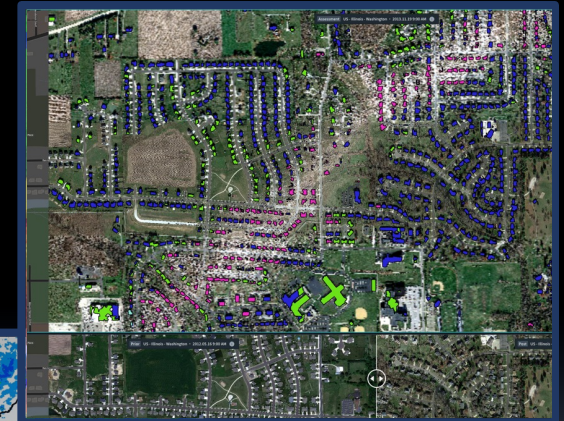
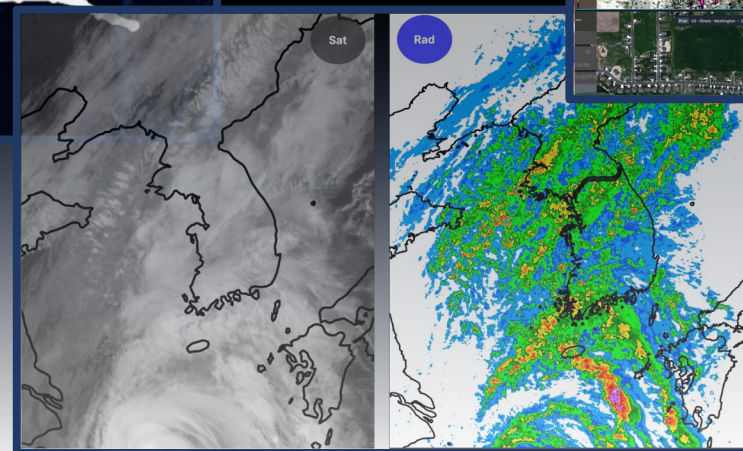
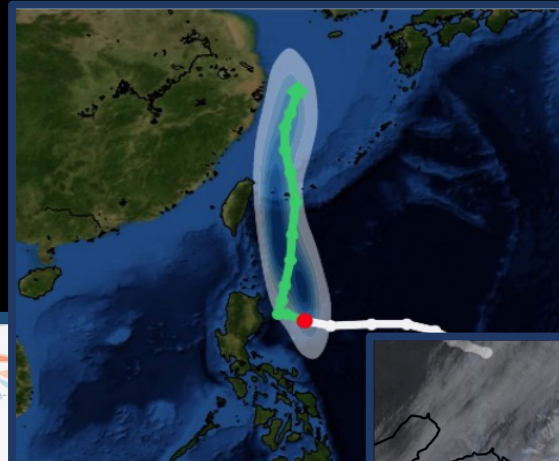
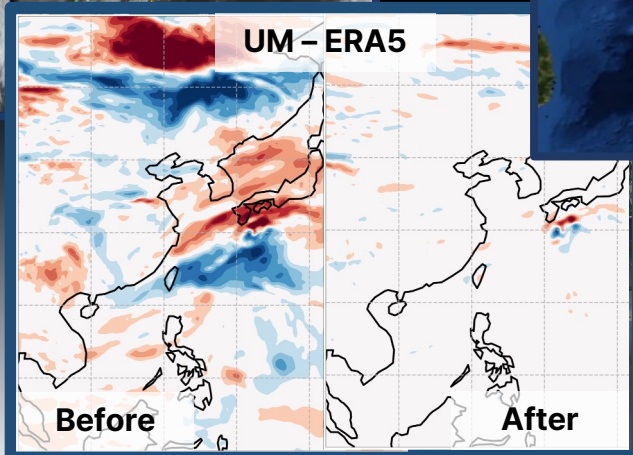
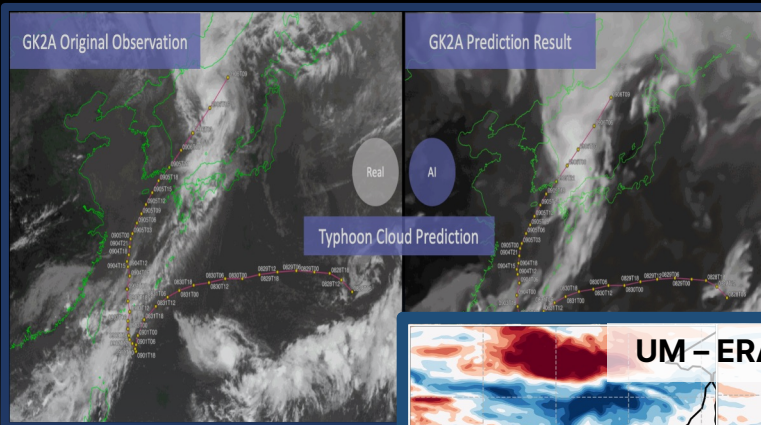
Forecasting clouds movement (Geocloud)

NWP forecast field Bias correction

Typhoon trajectory prediction

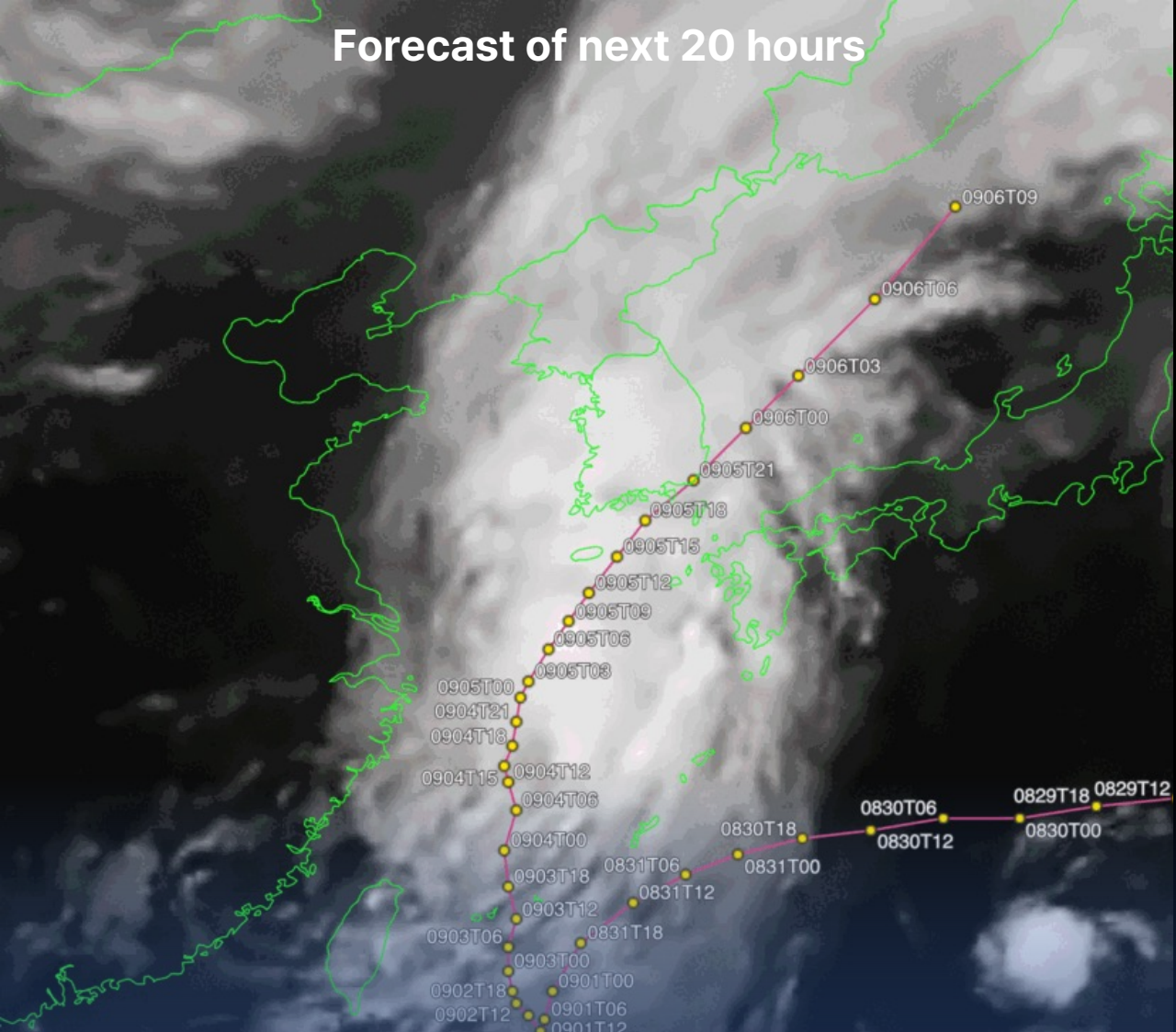
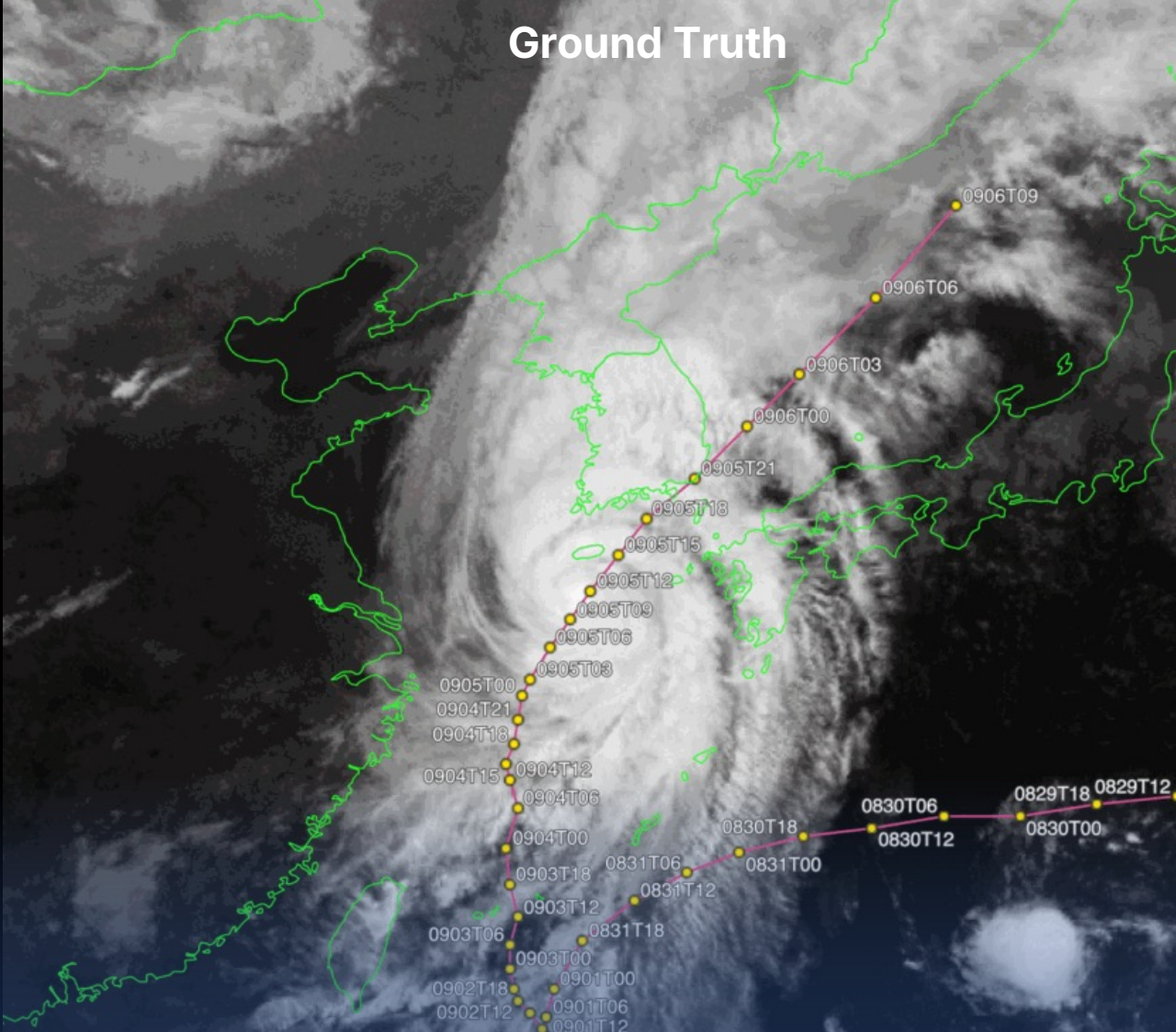
Monitoring rainfall (GeoRain)

Damage assessment



**Ground Truth**

**Forecast of next 20 hours**



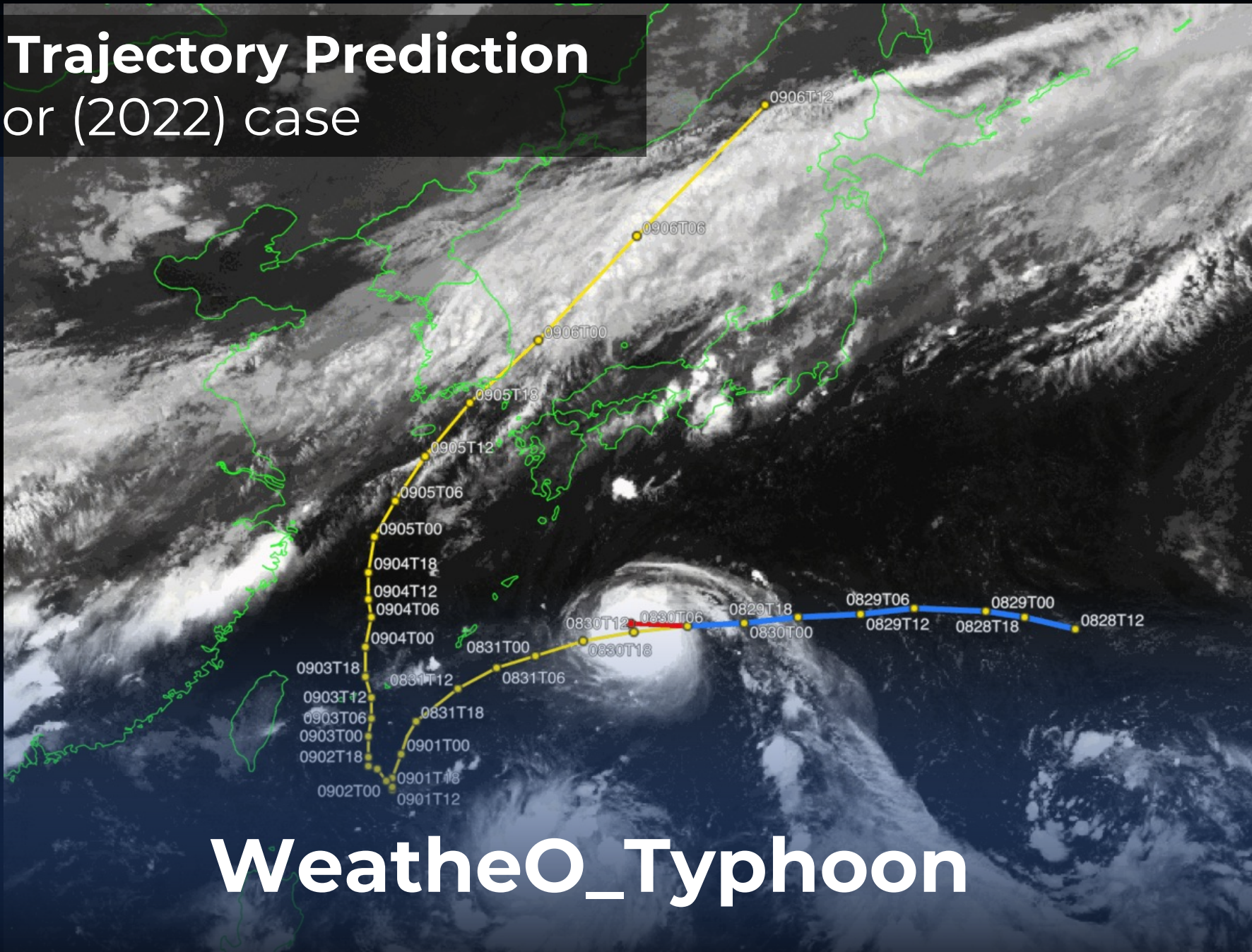
# WeatheO\_Cloud

**GK2A Satellite IR10.5 observations**

**Prediction**

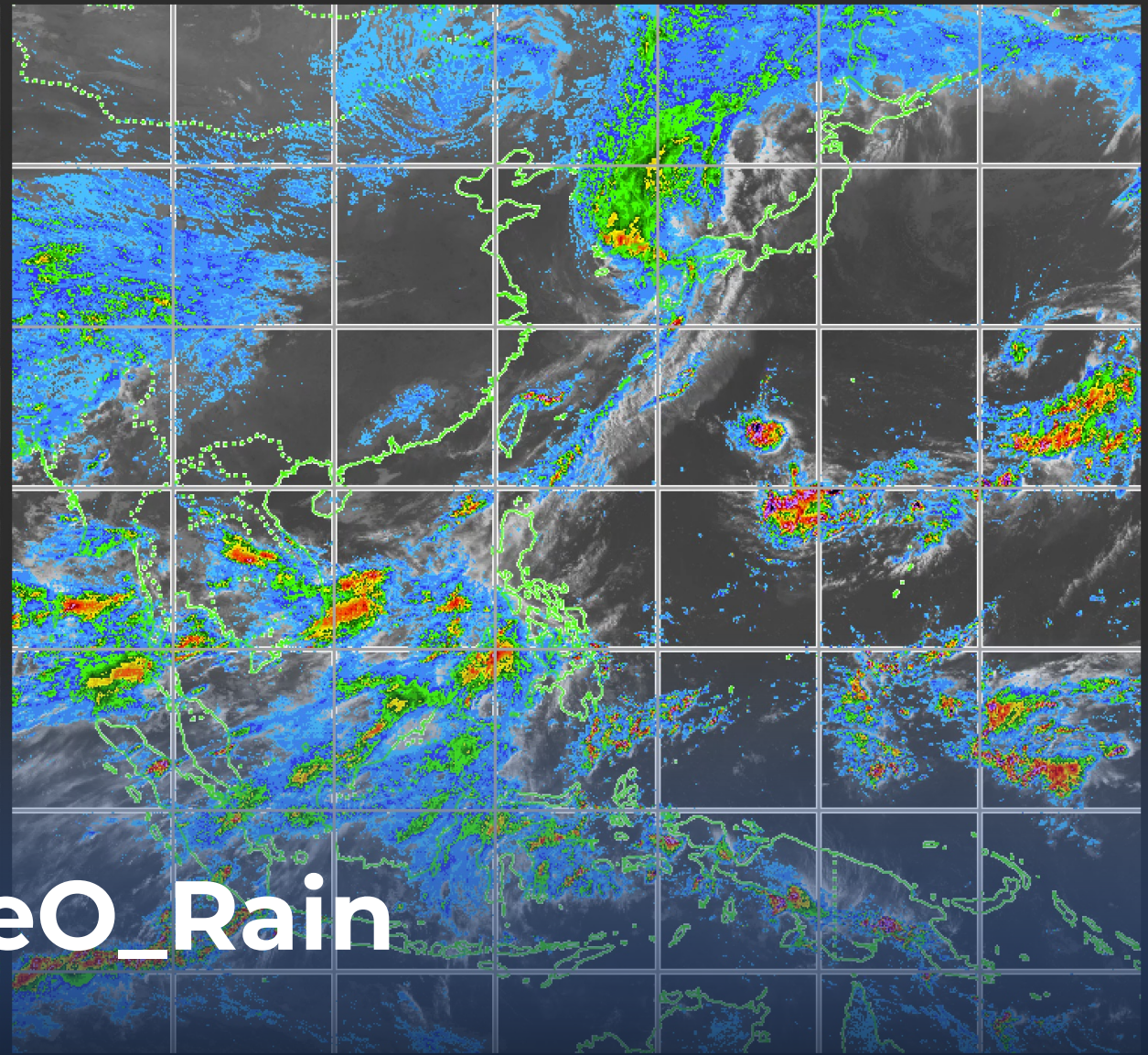
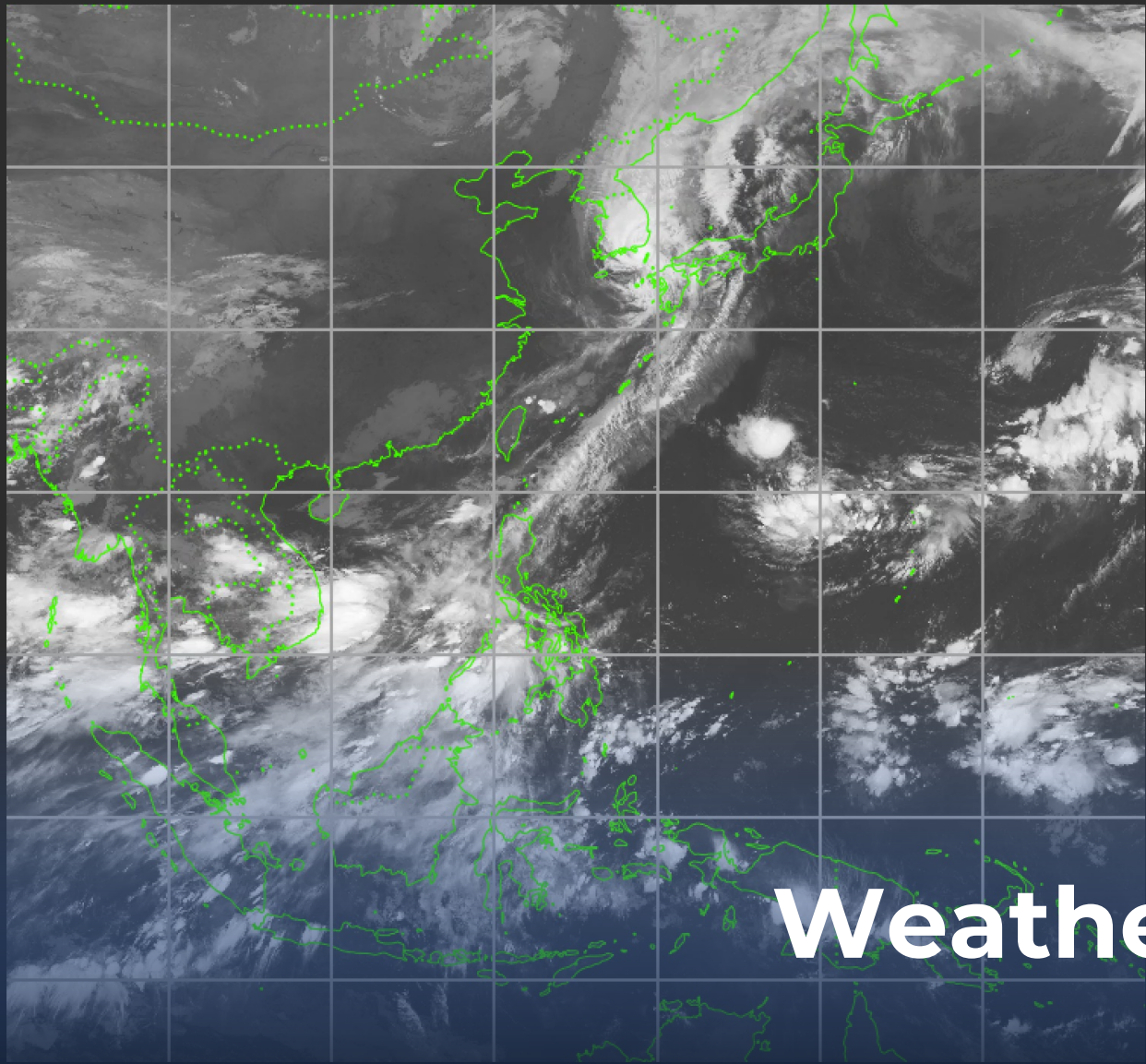
# Typhoon Trajectory Prediction

## Hinnamnor (2022) case



WeatheO\_Typhoon

2023.08.30 12:00 – 2023.09.06 12:00



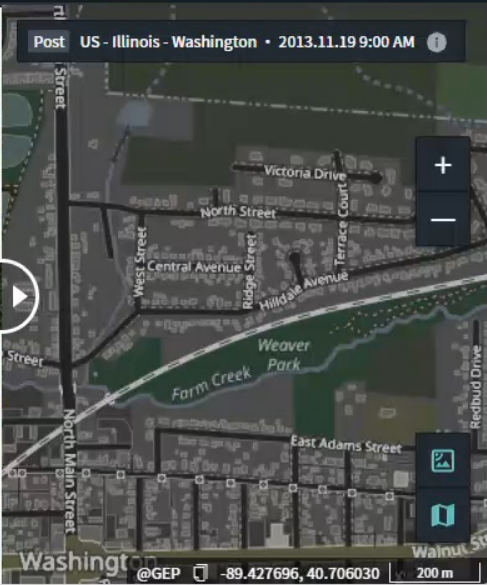
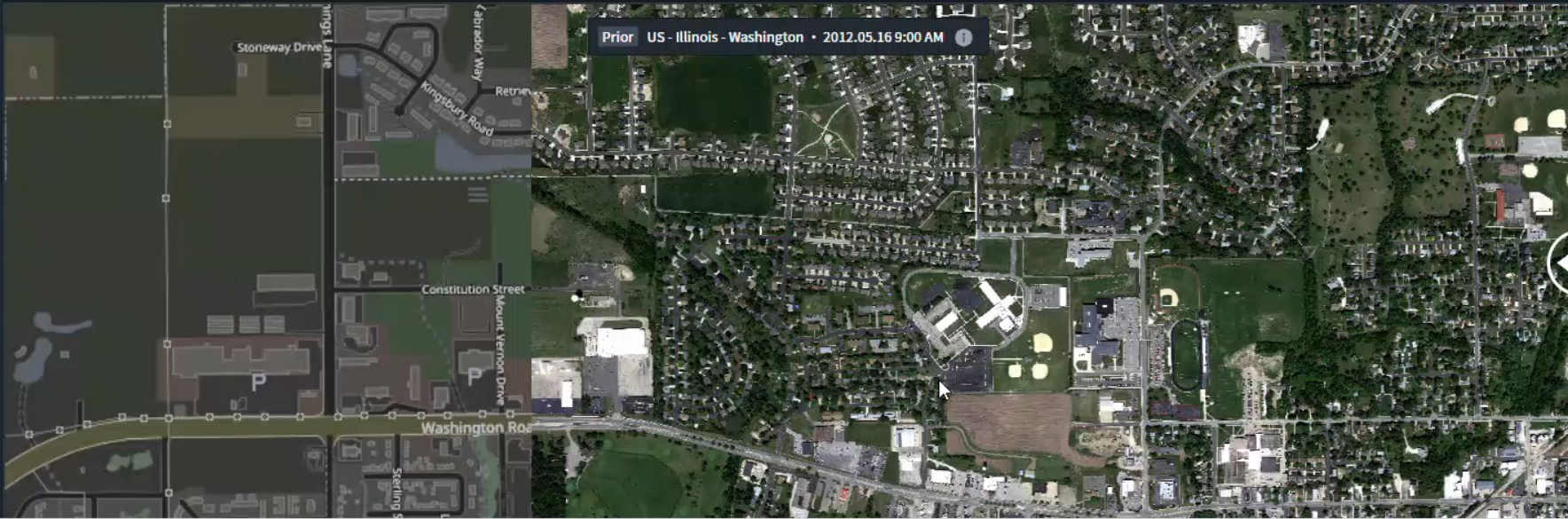
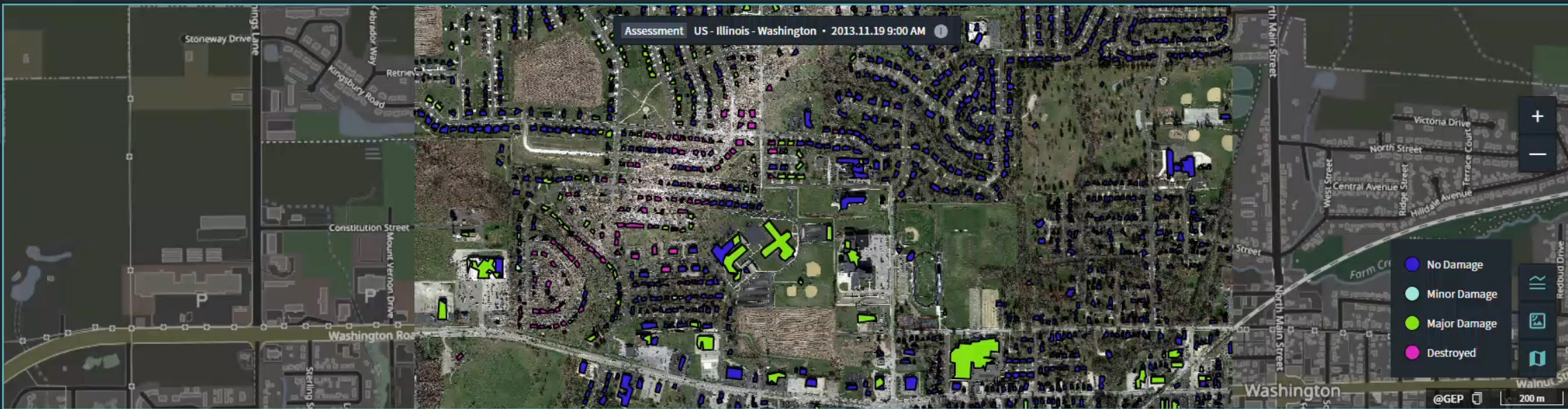
# WeatheO\_Rain

**GK2A Satellite IR10.5 observations**

**Generated Radar Map (rain rate)**



# Tornado in USA



# Through SIA SuperX, we improve data quality and enhance the analysis capabilities of AI packs



Original



SIA SuperX

Super resolution technique

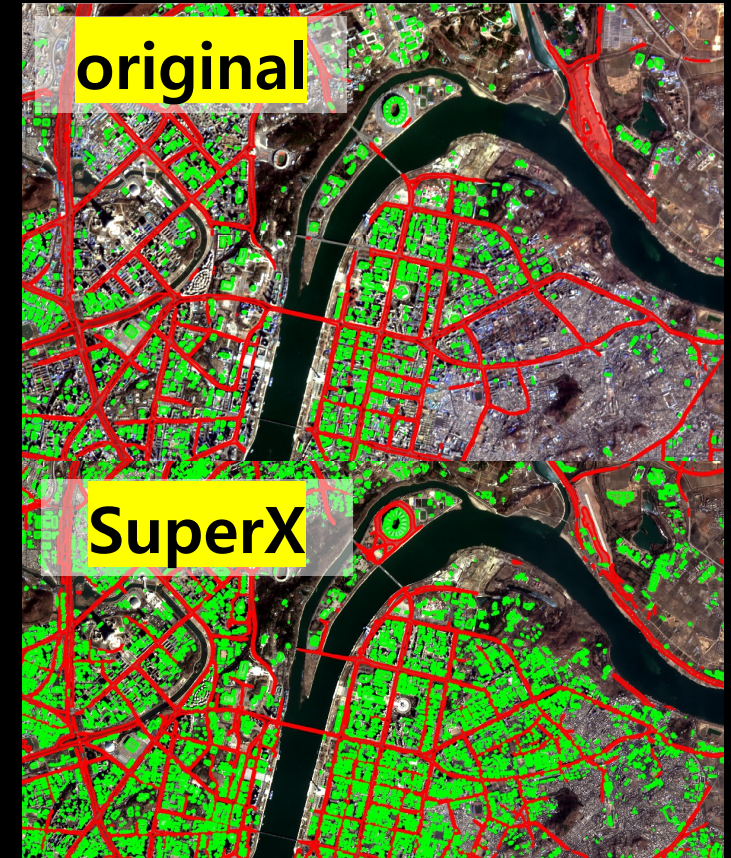
"SIA SuperX is a service that enhances the resolution of optical satellite images, making previously difficult-to-distinguish objects visible and enabling access to hard-to-acquire information



SIA AI pack

Segmentation / Change Detection

SIA AI pack is SIA's innovative analysis model for image analysis, enabling derivation of strategic insights in areas that require monitoring through object detection, classification, and identification.





“All people on Earth will be warned in advance to protect themselves through AI and Weather satellite data analysis”



# 감사합니다

Thank you for attention

2023. 12. 31.

[www.si-analytics.ai](http://www.si-analytics.ai)

70 Yuseong-daero 1689 beon-gil, Yuseong-gu, Daejeon, 34047, Republic of Korea

