

Norwegian Support to Geospatial Sector in the Republic of Moldova: Sixteen Years of Capacity Development

ELENA BUSCH

Norwegian Mapping Authority, Norway

Elena.busch@kartverket.no

MARIA OVDII

Agency for Land Relations and Cadastre of the Republic of Moldova

Maria.ovdii@arfc.gov.md

The Agency for Land Relations and Cadastre of Moldova



16 Years of successful cooperation

- √ 2006 – Feasibility study and application for funding
- √ 2007 – Nationwide orthophoto 40 cm and DTM <http://moldova-map.md>;
- √ 2008 – Enhancing technical and professional capacity <http://moldova-map.md>;
- √ 2009 – Development of Web-portal orthophoto publication <http://moldova-map.md>;
- √ 2010 – Development of MoldPOS Net <http://www.moldpos.md/>
- √ 2012 – Lidar scanning and DTM for flood-affected areas
- √ 2013 – Development of IT in Cadastre MoldLIS
- √ 2016 – New generation of nationwide orthophoto 20 cm and DTM
- √ 2016 – Pilot project on use of drones to facilitate mass property registration
- √ 2017 – Line Maps for Sustainable Goal <http://moldova-map.md>;
- √ 2019 – Technical and institutional capacity for LPAs
- √ 2020 – Geographical Law and Register
- √ 2021 – Implementation of IGIF / UNGGIM



Kartverket



2016: Feasibility study

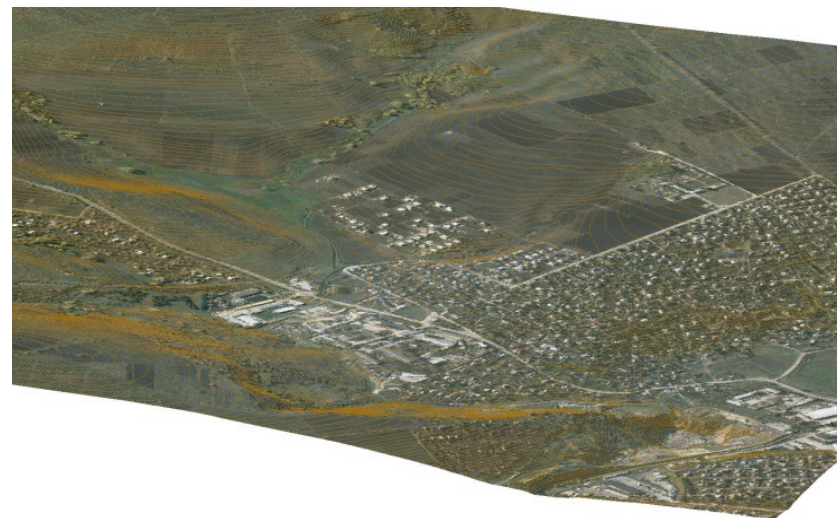
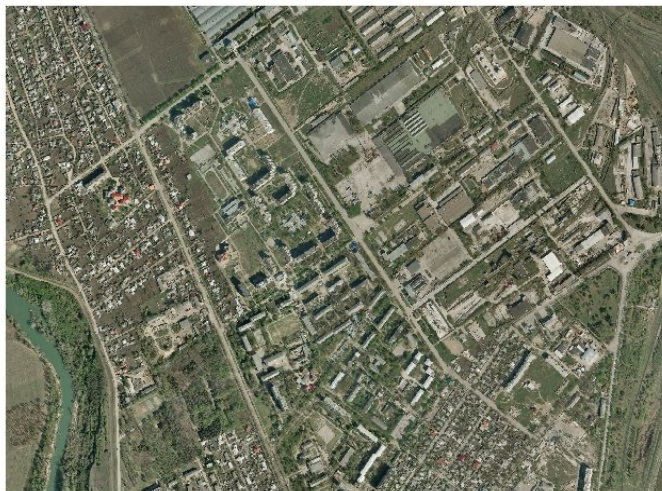


From left to right Mr. Helge ONSRUD and Ms. Elena BUSCH during Feasibility study in Chisinau, June 2006. Source ALRC



From left to right Ms. Anne Cathrine FRØSTRUP, Mr. Helge ONSRUD, Ms. Elena BUSCH, Mr. Lars MARDAL and Mr. Brede GUNDERSON from Kartverket. Source: ALRC, 2007

2007: Delivery of **Orthophoto** with resolution of 40 cm and Digital Terrain Model.

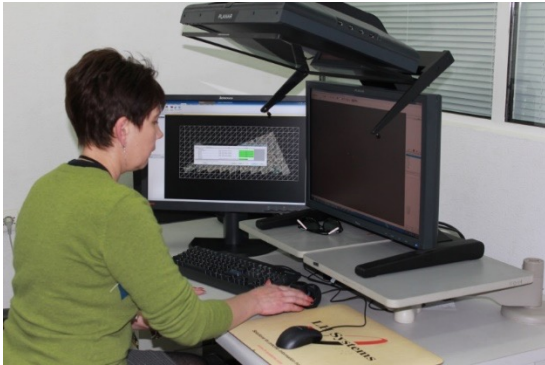


Orthophoto images and Digital Elevation Models. Source: ALRC, 2007 <http://geodata.gov.md>



BlomAerofilms Company team/ Great Brittan

2008: Technical support for efficient use of Orthophoto




From left to right Mr. Alexandr CAMINSCHI, Mr. Helge ONSRUD, Ms. Anne Cathrine FRØSTRUP and Mr. Alexandr BANNICOV. Source: ALRC, 2008

Closing Workshop. Source: ALRC 2008

2009: Development of web-portal for publication Orthophoto images and DTM

Приложения ★ Bookmarks M Mesaje primite - ne... Ținograd Мертр ✈ Авиабилеты

Ioldova Map Featured Contents



search...

Contents

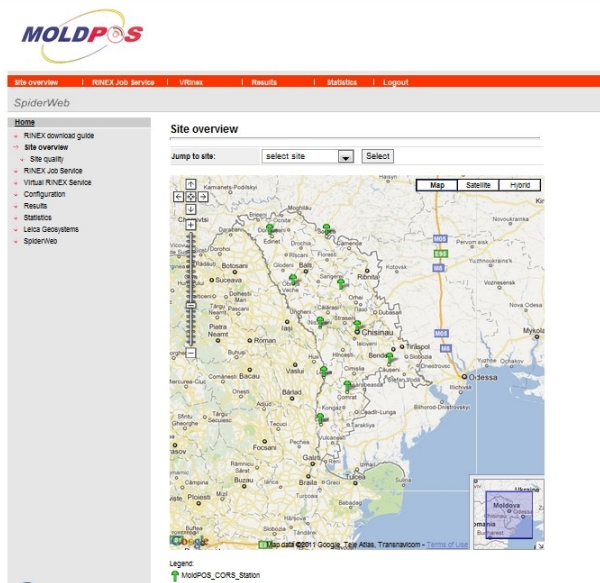
Maps (7) Dashboards (0)

Maps

ORTOFOTO Ortoimagini din Fondului Național de Date Geospațiale a R. Moldova	ELEVATIE Modelul digital al terenului	HARTI Harti topografice și liniare	CADASTRU Planul cadastral pentru teritoriul RM
SOLURI Soluri și subsoluri caracterizate în funcție de adâncime, textură, structură și conținut	AGRICULTURA Institutul de învățământ profesional tehnic din sect. agroalimentar. Sectorul zootehnic.	MEDIU Agenția "Moldsilva" - fondul forestier	

<http://moldova-map.md>

2010: Development of MOLDPOS Net.

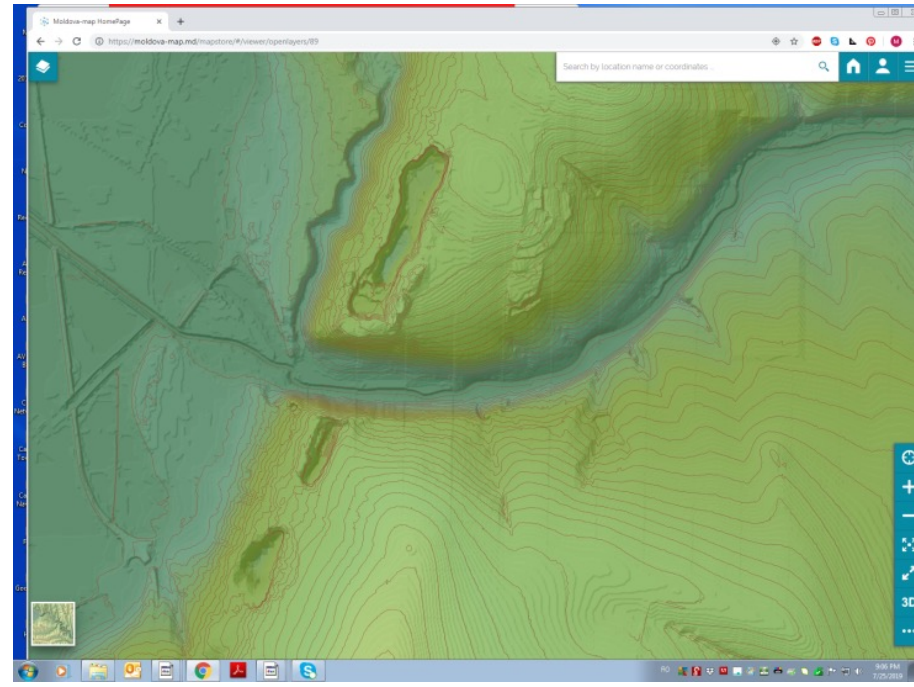
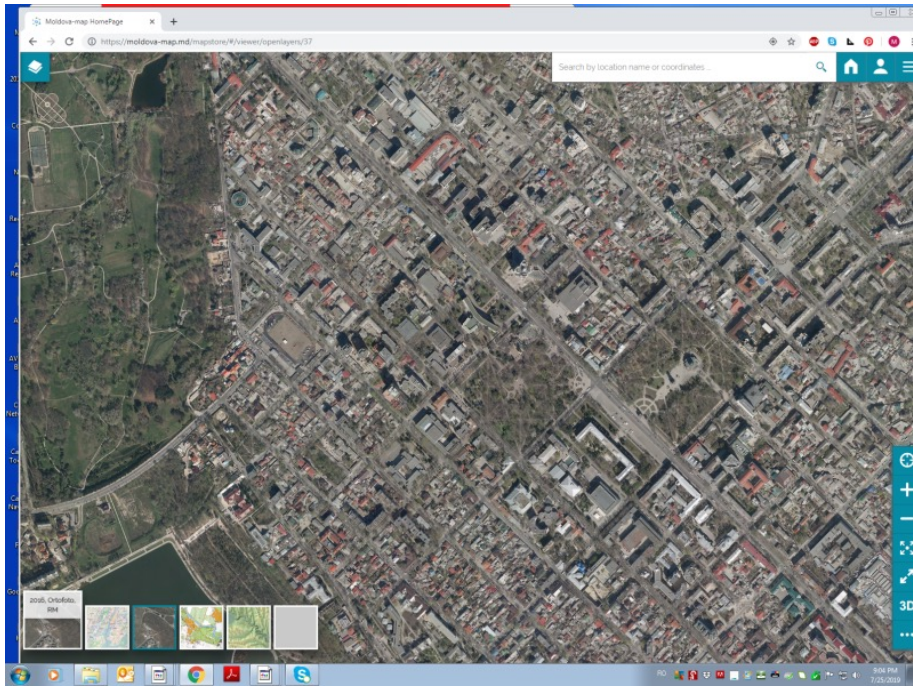


<http://moldpos.md/>



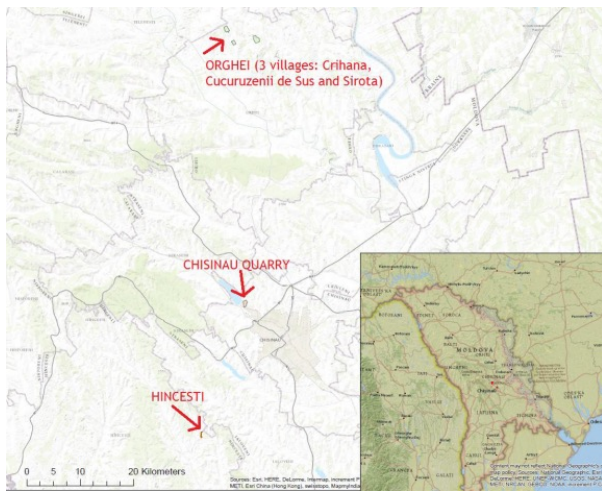
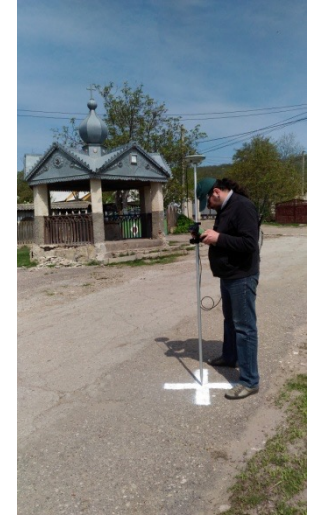
The final seminar for the official opening of the National Positioning System MoldPOS in 2010. From left to right Mr. Helge ONSRUD, Mrs. Elena BUSCH, Mr. Anatolie GHILAȘ, Mrs. Maria OVDII and the group photo of the seminar delegates. Source: ALRC, 2010.

2016: The new generation of Orthophoto



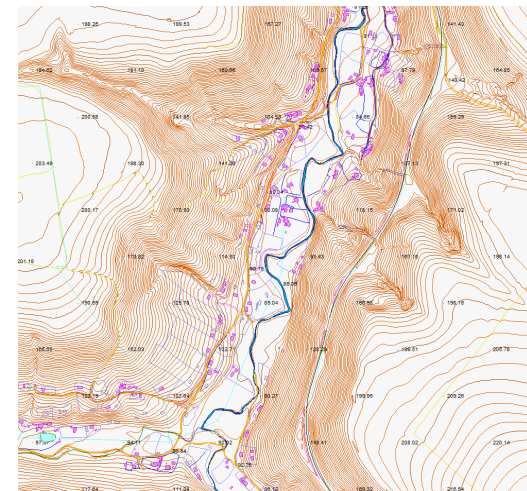
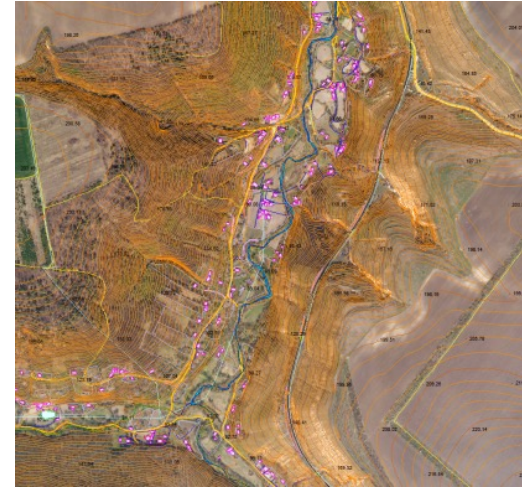
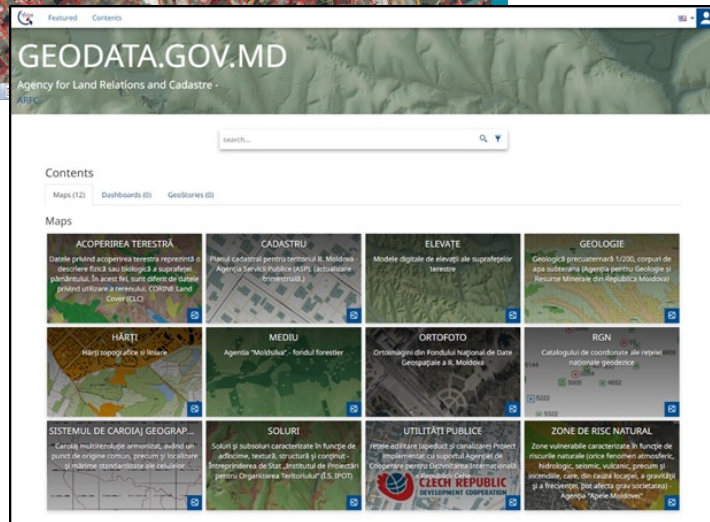
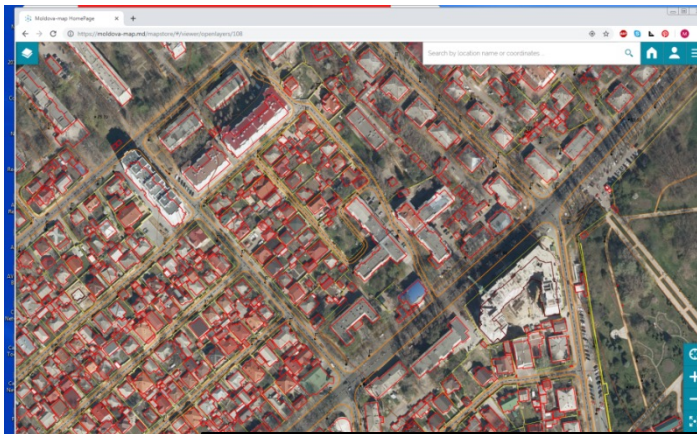
Orthophoto 2016 and DTM <https://geodata.gov.md/#/>

2016: Pilot project for use UAV (drones)



Selected areas for Pilot and Project implementation team

2017: Maps for Sustainable Development Goal



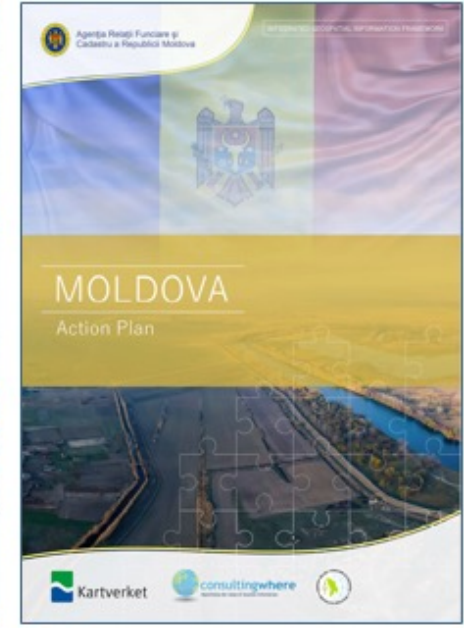
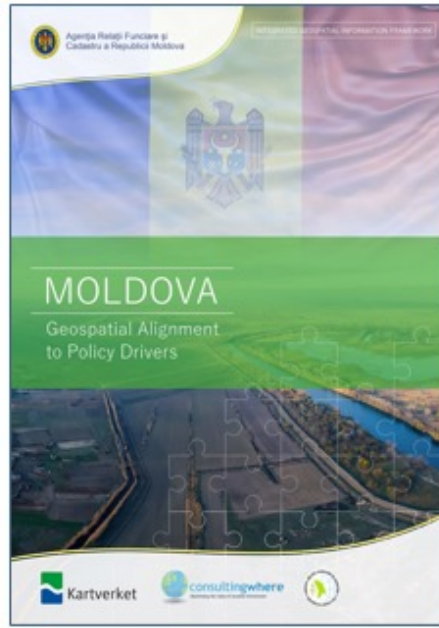
Digital maps and DTM based on Orthophoto 2016

<https://geodata.gov.md/#/>

2020-2022: The Geographical Names Register



2021: Implementation of the Integrated Geospatial Information Framework in Moldova (IGIF)



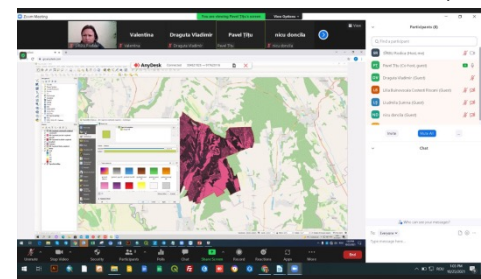
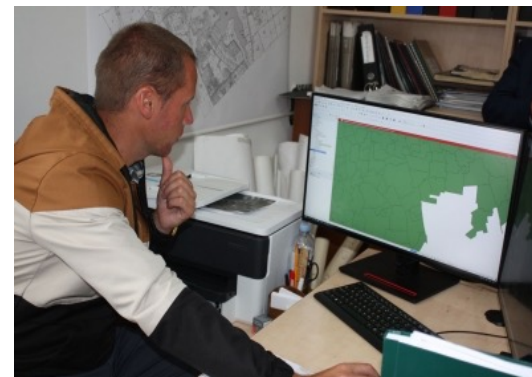
2020-2023: Technical and institutional support for LPAs



Project launching workshop organised by ALRC, Ingeocad and Kartverket, 26 February 2020. The workshop gathered 100 participants, mostly from local public authorities. Source: ALRC, 2020.



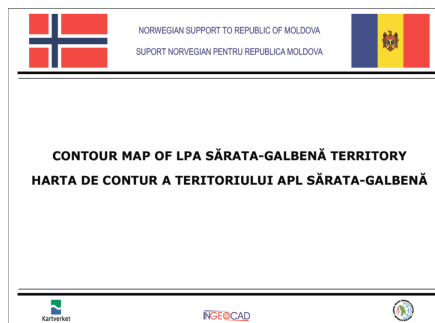
Workstations with professional software were delivered to 150 Local Public Authorities. Source: CALM, 2022.



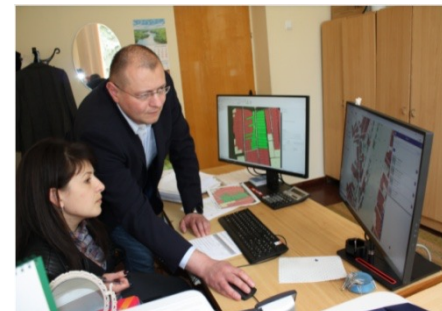
QGIS Training for LPAs. Source: Rodica Sirbu, 2022



Picture to the left shows the state of paper maps in LPAs. Picture to the right shows printed orthophoto maps distributed for free to local public administrations. Source: ALRC, 2020



Contour Maps for LPAs. Source ALRC 2022



Alexandru Morcov from CALM visited LPA: 2021.

Regional cooperation between NMCA in Georgia, Kyrgyzstan, Moldova, and Ukraine



The Regional conference on new technologies for airborne data acquisition, Batumi, Georgia, 2016



The Regional Workshop on Creation of the National Spatial Data Infrastructure, Moldova, 2018



A regional conference on geospatial data for sustainable development, Kakheti, Georgia, 2019.



On-line Conference Geospatial Information for Digital transformation, 27-29 October 2021, organised by Kartverket, Norway



In conclusion

1773 - 2023
Samfunnsnytte gjennom
250 år



Thank you for your attention

