



# Land Selection E-service

for investors in Special Economic Zone at  
Duqm (SEZAD) in the Sultanate of Oman



## 22 Zones

- (1) Existing Special Economic Zones (2) Zones under construction **1**
- (3) Existing free zones (1) zone under construction **2**
- (9) Existing industrial areas & (6) under construction **3**

**2,200 km<sup>2</sup>**

Total area

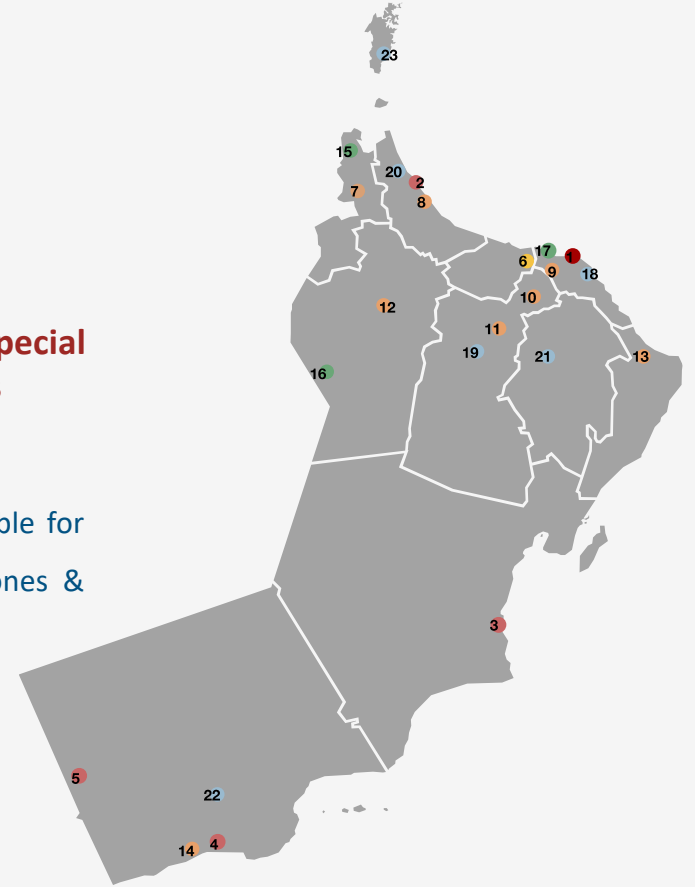
**39 Billion USD**

The total investments in the zones affiliated to the authority until mid-2022

# OPA Z

## Public Authority for Special Economic Zones and Free Zones

The government authority responsible for all special economic zones, free zones & industrial zones.



### قيد التطوير Under development

- مدينة المضبيبي الصناعية 21 Al Mudhaibi industrial city
- مدينة الوادي الكبير الصناعية 18 AlWadi AlKabir industrial city
- مدينة ثمرت الصناعية 22 Thumrait industrial city
- مدينة سح السرية الصناعية 19 Sih Alsiriyah industrial city
- مدينة محاس الصناعية 23 Mahas industrial city
- مدينة شناس الصناعية 20 Shinas industrial city

- المنطقة الاقتصادية بناية الروضة 15 Al Rawdha Special Economic Zone
- المنطقة الاقتصادية بمحافظة الظاهرة 16 Al Dhahirah Special Economic Zone (EZAD)
- المنطقة الحرة بمطار مسقط الدولي 17 Muscat Airport Free Zone

- مدينة نزوى الصناعية 11 Nizwa industrial city
- مدينة عبري الصناعية 12 lbri industrial city
- مدينة صور الصناعية 13 Sur industrial city
- مدينة ريسوت الصناعية 14 Raysut industrial city
- مدينة البريمي الصناعية 7 Buraimi industrial city
- مدينة صحرار الصناعية 8 Suhar industrial city
- مدينة الإرسال الصناعية 9 Al Rusayl industrial city
- مدينة سمائل الصناعية 10 Samail industrial city

- واجهة المعرفة بمسقط 6 Knowledge Oasis Muscat IT Park

الهيئة العامة للمناطق الاقتصادية الخاصة والمناطق الحرة  
The Public Authority for Special Economic Zones and Free Zones (OPA Z)

- المنطقة الحرة بصحار 2 Sohar Port and Free Zone
- المنطقة الاقتصادية الخاصة بالدمق 3 The Special Economic Zone at Duqm (SEZAD)
- المنطقة الحرة بصلالة 4 Salalah Free Zone
- المنطقة الحرة بالمزونة 5 Al Mazunah Free Zone





## The Public Authority for Special Economic Zones and Free Zone (OPAZ) was established in 18 August 2020, hereby Royal Decree No 105/2020

OPAZ competences and its relationship to Special Economic Zone at Duqm, Free Zones and Industrial Zones

### Operates

Supervises all free zones and the special Economic Zone at Duqm

### Facilitates

Determines usufruct right of state owned lands, implements One Stop Shop system and issues all types of licenses, permits and certificates for doing businesses

### Regulates

determines the legal framework of management and operation including regulating investment environment.

### plans

Develops strategic planning framework for special economic zones and free zones in consistency with the strategic plans of the Sultanate of Oman





## E-land Selection service

An electronic service for direct allocation and selection of investment lands by investors in the Special Economic Zone at Duqm (SEZAD) through web browser and interactive digital maps





Public Authority for Special  
Economic Zones and Free Zones



## Objective of E-land Selection service?

- To achieve justice and transparency for investors in the economic zone.
- To facilitate the procedures for investors.
- To reduce effort and time .



## Advantages of land selection service

- Allows all vacant plots to be viewed for direct selection based on the type of activity chosen and required area range.
- Shows accurate topographic information and elevation charts above sea level
- Enables the integration of contiguous lands (Apply spatial and topological validation for plots merge).
- Determines the geographical coordinates of locations and shares them directly across various applications.
- Enables digital Maps printing.
- Find surrounding services by buffer range.
- Distance from top landmarks.





# Key economic activities available for direct selection:

More than 800 economic activities are available for selection, these activities are distributed over the areas of the master plan of the Special Economic Zone at

Duqm in various industrial areas:

Heavy, Medium & Light Industry

Fisheries & Food Industries

Clean energy activities, green hydrogen

city center activities :

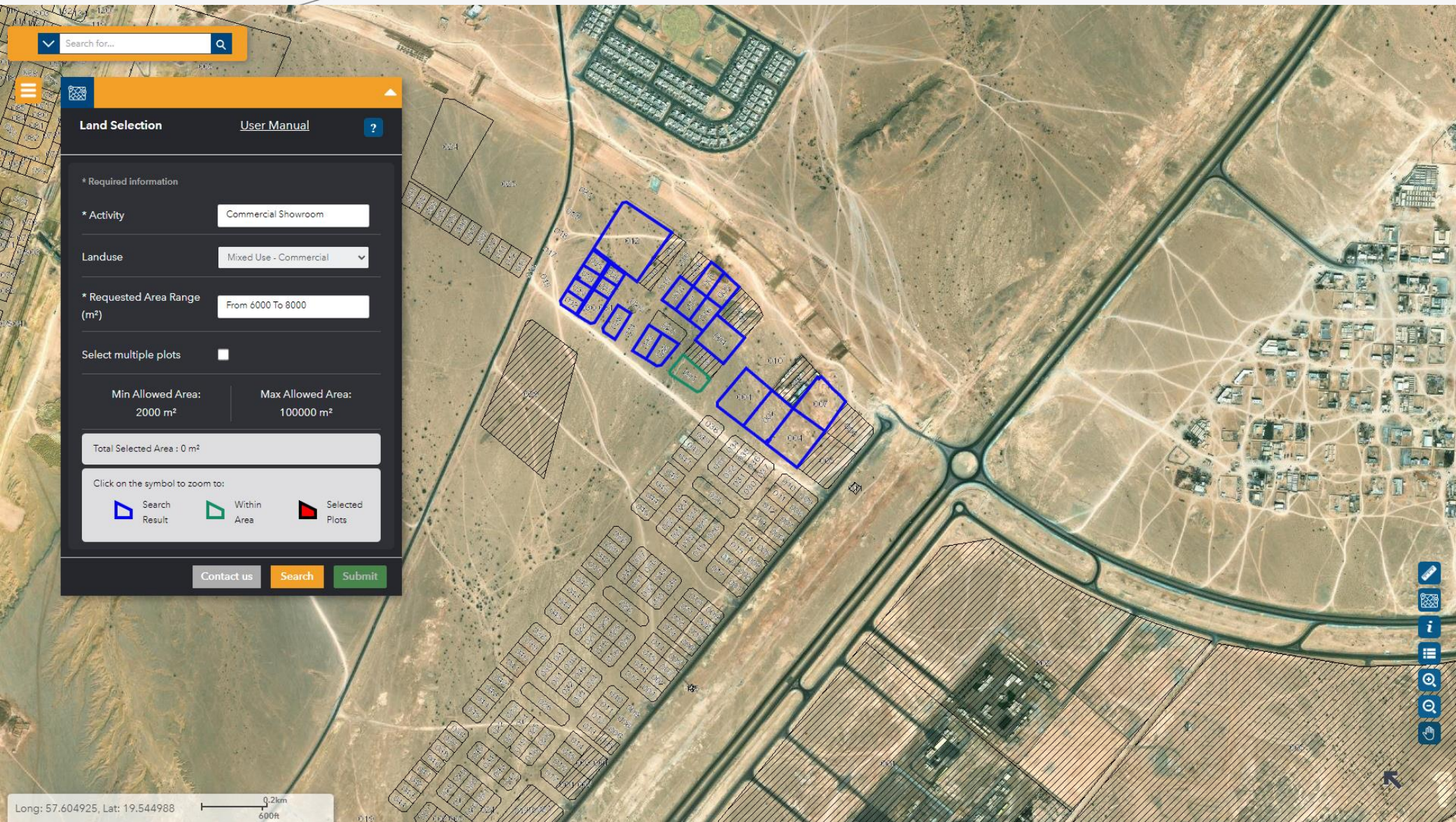
- Residential
- Commercial
- Mixed residential and commercial use
- Educational, health and facilities use



# Live Spatial Dashboard and Geo-database related







Search for...

Land Selection

User Manual



\* Required information

\* Activity: Commercial Showroom

Landuse: Mixed Use - Commercial

\* Requested Area Range (m<sup>2</sup>): From 6000 To 8000

Select multiple plots:

Min Allowed Area: 2000 m<sup>2</sup>

Max Allowed Area: 100000 m<sup>2</sup>

Total Selected Area : 0 m<sup>2</sup>

Click on the symbol to zoom to:

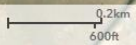
- Search Result
- Within Area
- Selected Plots

Contact us

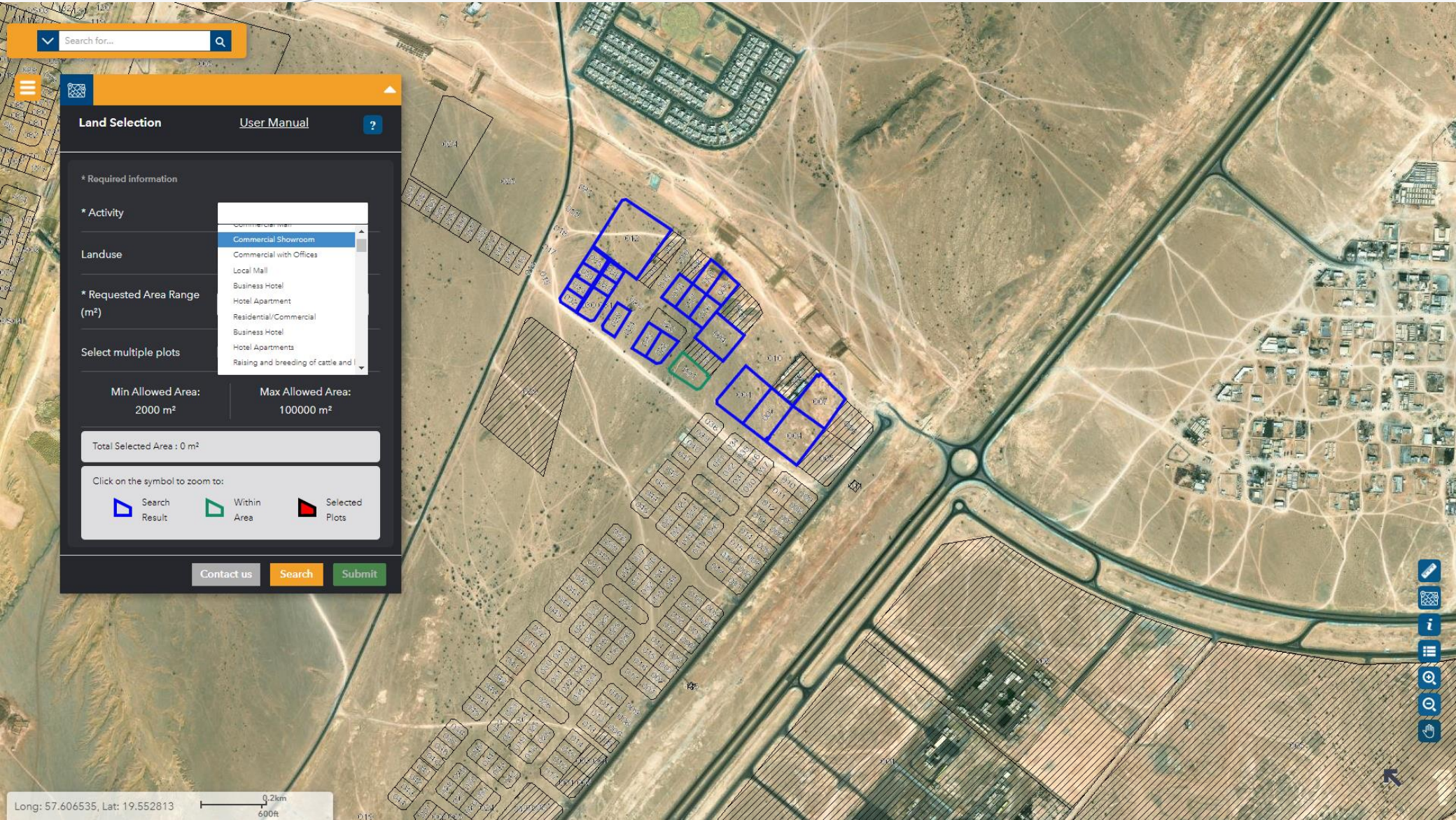
Search

Submit

Long: 57.604925, Lat: 19.544988







Search for...

**Land Selection** [User Manual](#) ?

\* Required information

\* Activity

Landuse

- Commercial Showroom
- Commercial with Offices
- Local Mall
- Business Hotel
- Hotel Apartment
- Residential/Commercial
- Business Hotel
- Hotel Apartments
- Raising and breeding of cattle and

\* Requested Area Range (m<sup>2</sup>)

Select multiple plots

Min Allowed Area: 2000 m<sup>2</sup>      Max Allowed Area: 100000 m<sup>2</sup>

Total Selected Area : 0 m<sup>2</sup>

Click on the symbol to zoom to:

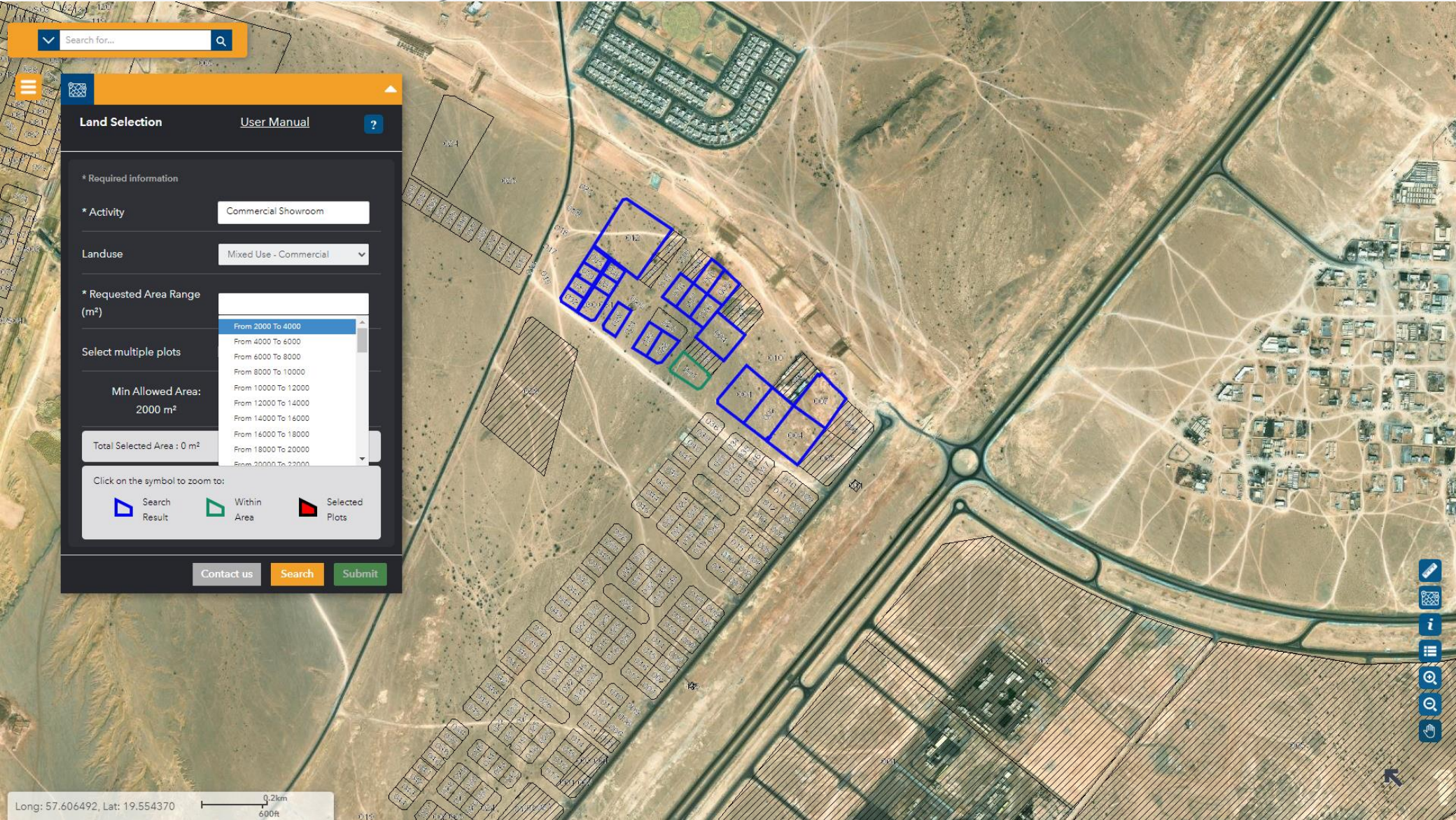
- Search Result
- Within Area
- Selected Plots

[Contact us](#) [Search](#) [Submit](#)



Long: 57.606535, Lat: 19.552813      0.2km / 600ft





**Land Selection** [User Manual](#) ?

\* Required information

\* Activity

Landuse

\* Requested Area Range (m²)

Select multiple plots

Min Allowed Area: 2000 m²

Total Selected Area : 0 m²

Click on the symbol to zoom to:

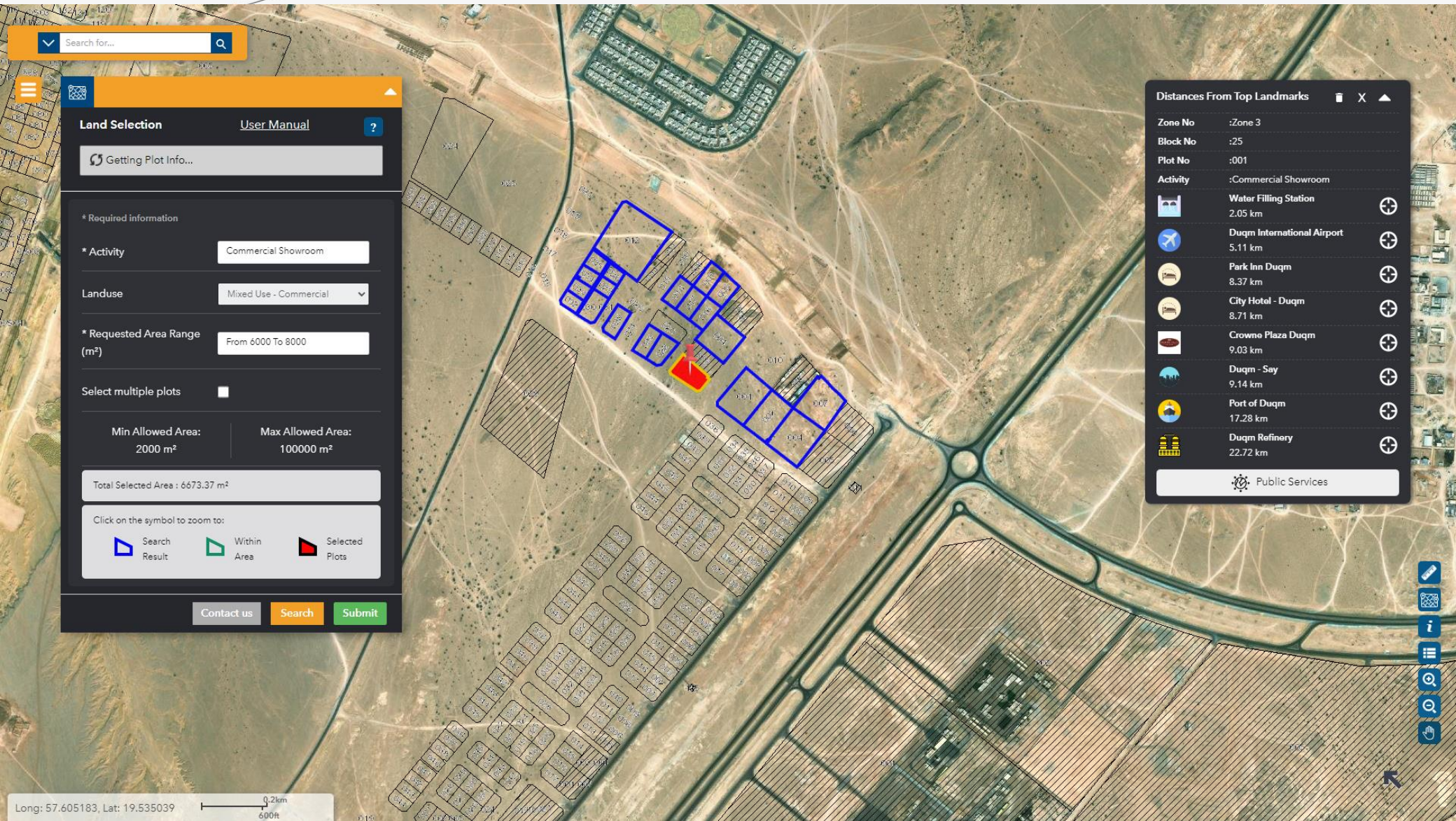
- Search Result
- Within Area
- Selected Plots



Long: 57.606492, Lat: 19.554370

0.2km  
500ft





Search for...

**Land Selection** [User Manual](#) ?

Getting Plot Info...

\* Required information

\* Activity: Commercial Showroom

Landuse: Mixed Use - Commercial

\* Requested Area Range (m<sup>2</sup>): From 6000 To 8000

Select multiple plots:

Min Allowed Area: 2000 m<sup>2</sup> | Max Allowed Area: 100000 m<sup>2</sup>

Total Selected Area : 6673.37 m<sup>2</sup>

Click on the symbol to zoom to:

Search Result    Within Area    Selected Plots

Contact us   Search   Submit

Distances From Top Landmarks

Zone No	:Zone 3
Block No	:25
Plot No	:001
Activity	:Commercial Showroom
	Water Filling Station 2.05 km
	Duqm International Airport 5.11 km
	Park Inn Duqm 8.37 km
	City Hotel - Duqm 8.71 km
	Crowne Plaza Duqm 9.03 km
	Duqm - Say 9.14 km
	Port of Duqm 17.28 km
	Duqm Refinery 22.72 km

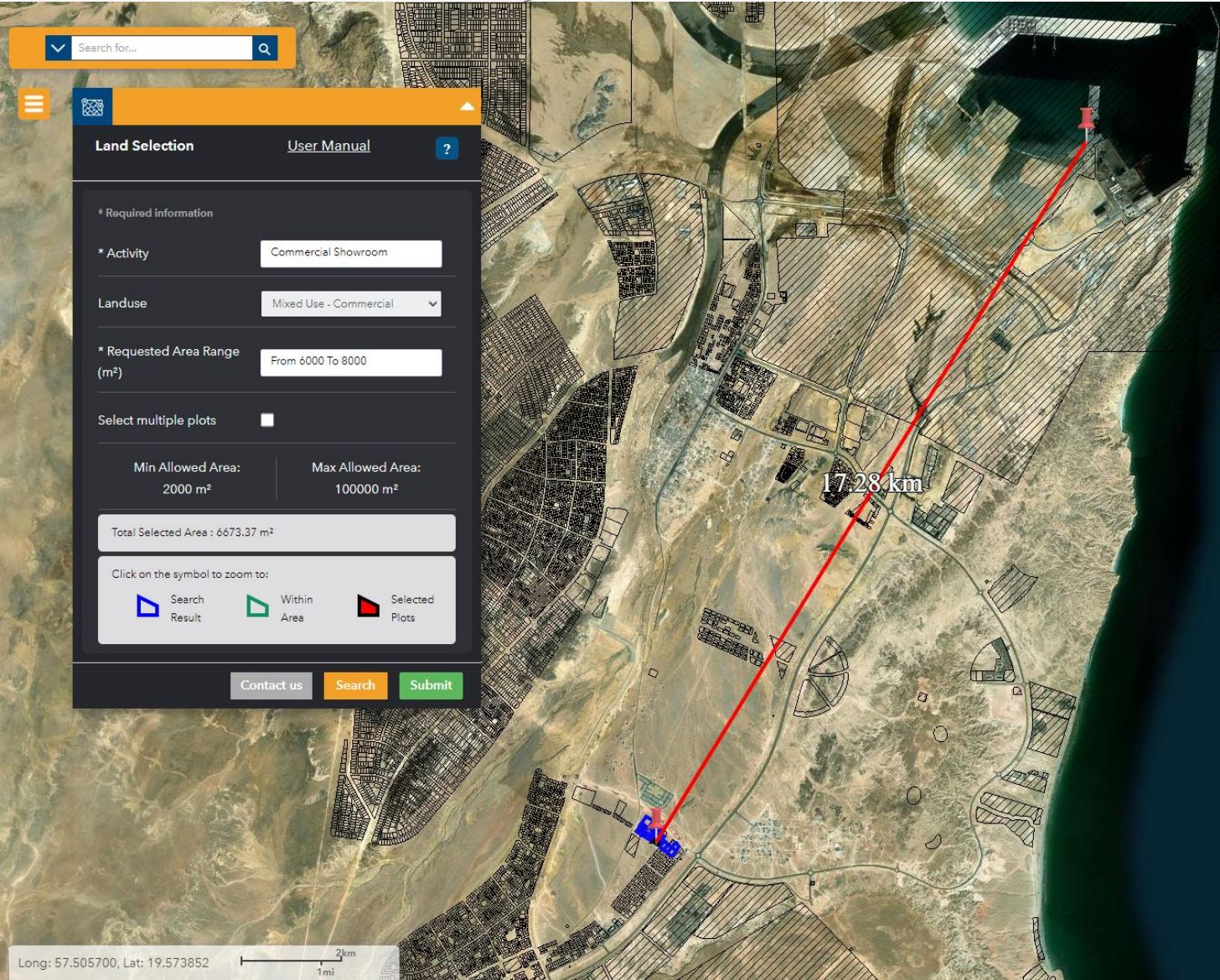
Public Services

Long: 57.605183, Lat: 19.535039

0.2km / 600ft







Search for...

**Land Selection** [User Manual](#)

\* Required information

\* Activity: Commercial Showroom

Landuse: Mixed Use - Commercial

\* Requested Area Range (m<sup>2</sup>): From 6000 To 8000

Select multiple plots:

Min Allowed Area: 2000 m<sup>2</sup> | Max Allowed Area: 100000 m<sup>2</sup>

Total Selected Area : 6673.37 m<sup>2</sup>

Click on the symbol to zoom to:

Search Result  
  Within Area  
  Selected Plots

[Contact us](#)  
 [Search](#)  
 [Submit](#)

Distances From Top Landmarks

Zone No	:Zone 3
Block No	:25
Plot No	:001
Activity	:Commercial Showroom
Elevation (m)	:61,62
	Water Filling Station 2.05 km
	Duqm International Airport 5.11 km
	Park Inn Duqm 8.37 km
	City Hotel - Duqm 8.71 km
	Crowne Plaza Duqm 9.03 km
	Duqm - Say 9.14 km
	Port of Duqm 17.28 km
	Duqm Refinery 22.72 km

[Public Services](#)

Long: 57.505700, Lat: 19.573852

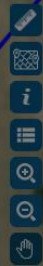
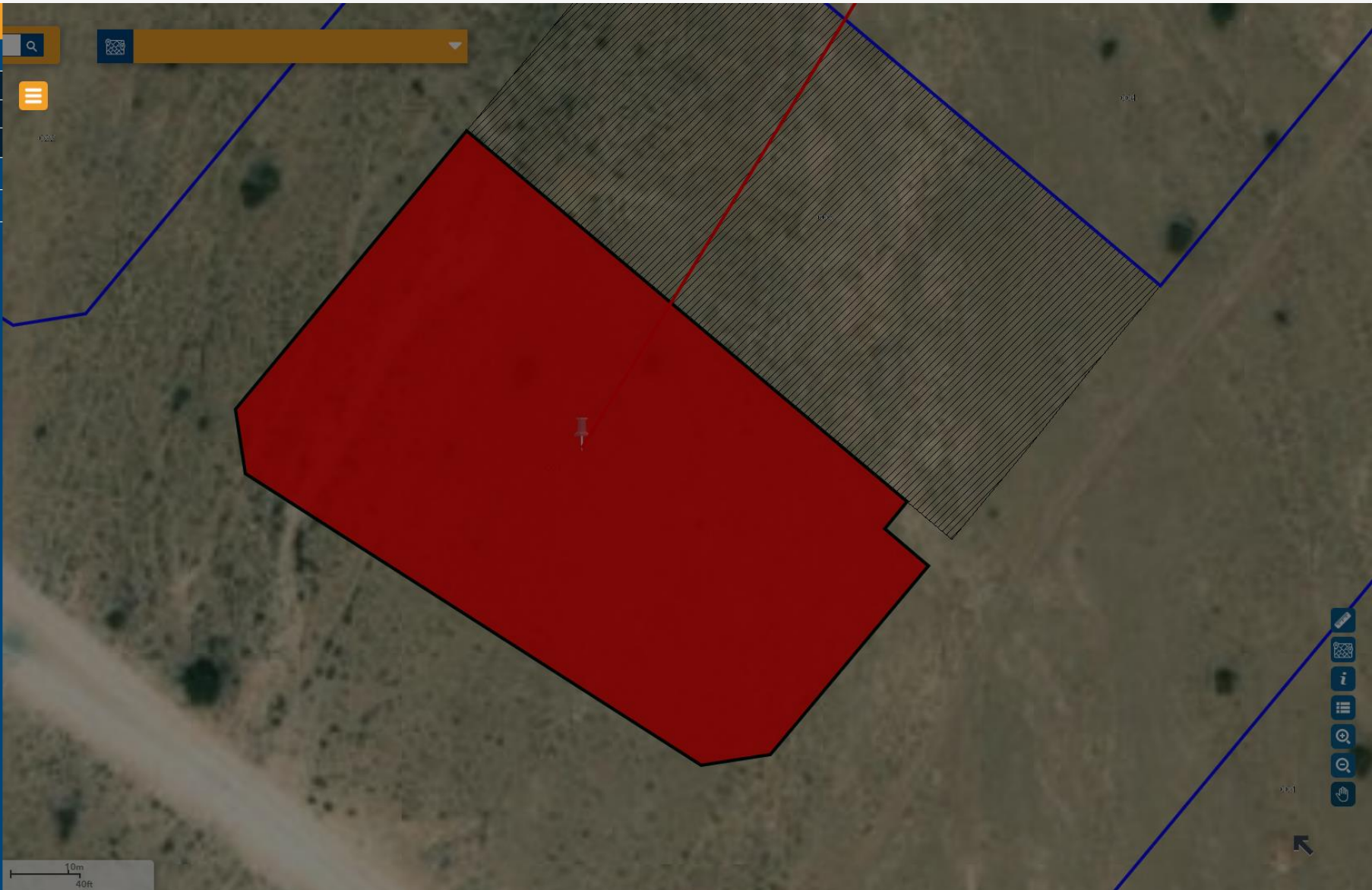
1mi 2km





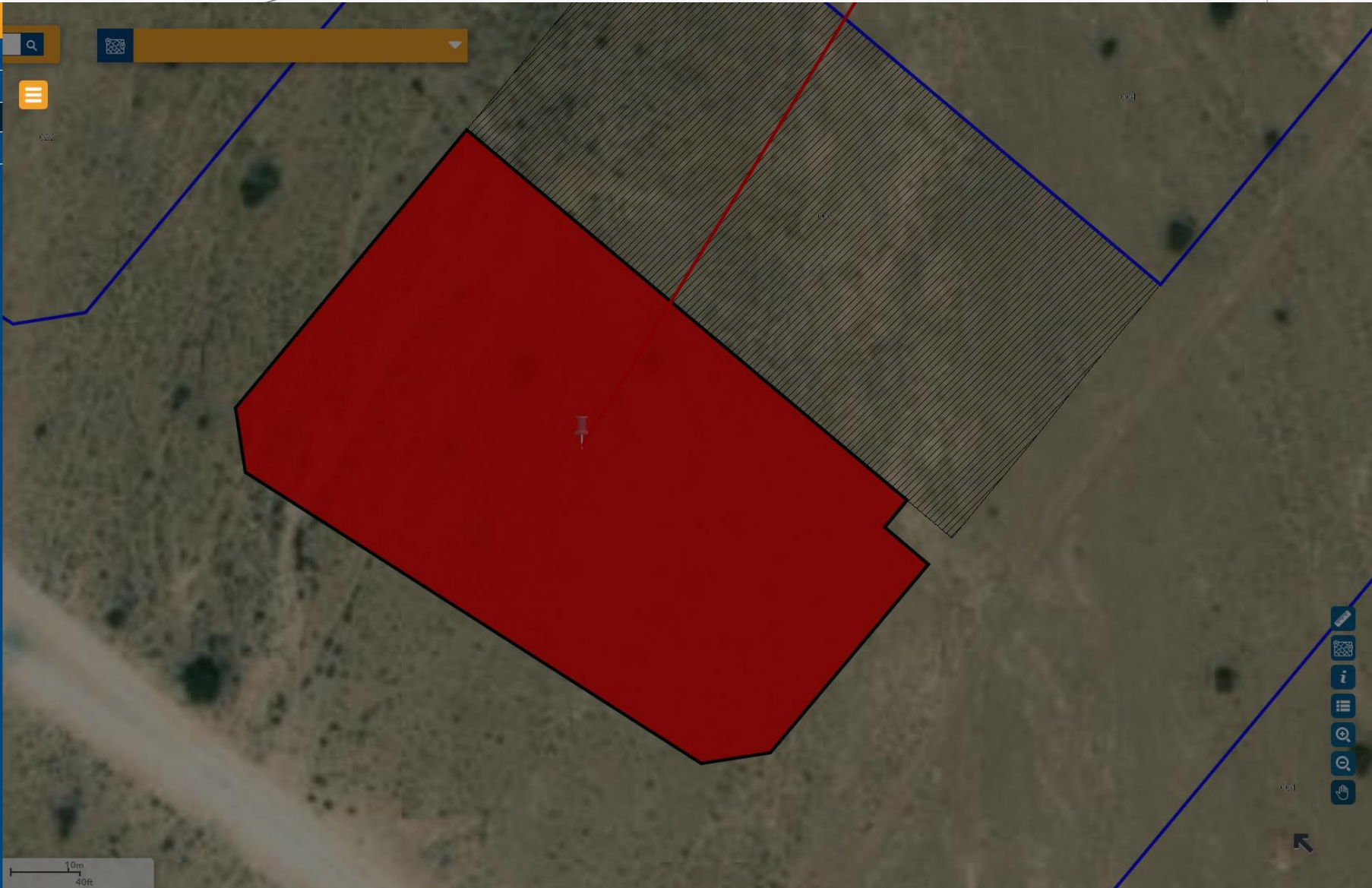


- Welcome
- General Tools
  - Measure
  - Draw
  - Zoom To Location
- Advanced Tools
- Map





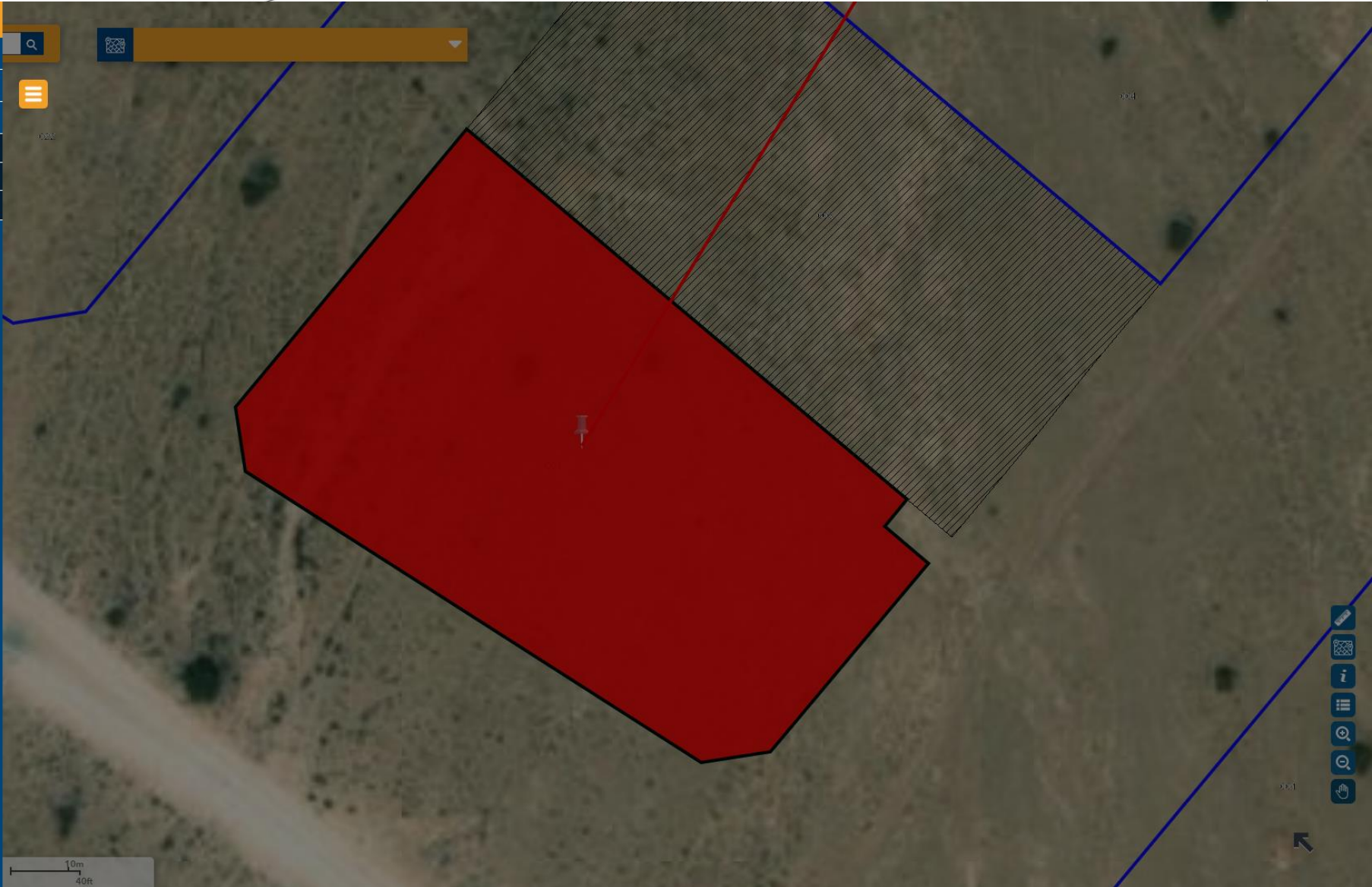
- Welcome
- General Tools
- Advanced Tools
- Public Services
- Map



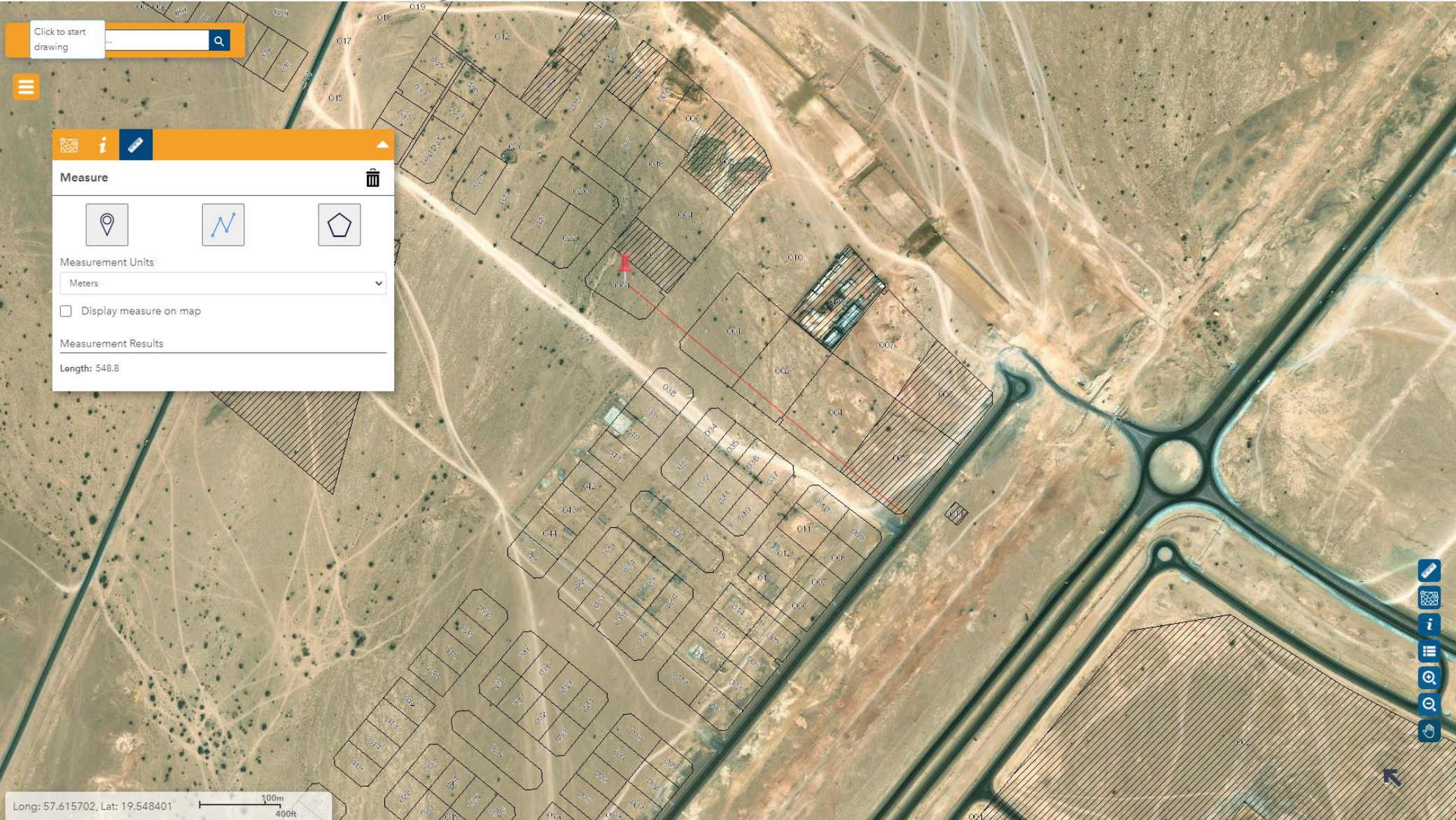




- Welcome
- General Tools
- Advanced Tools
- Map
- Identify
- Legend
- Print Map







Click to start drawing



**Measure**

Measurement Units  
Meters

Display measure on map

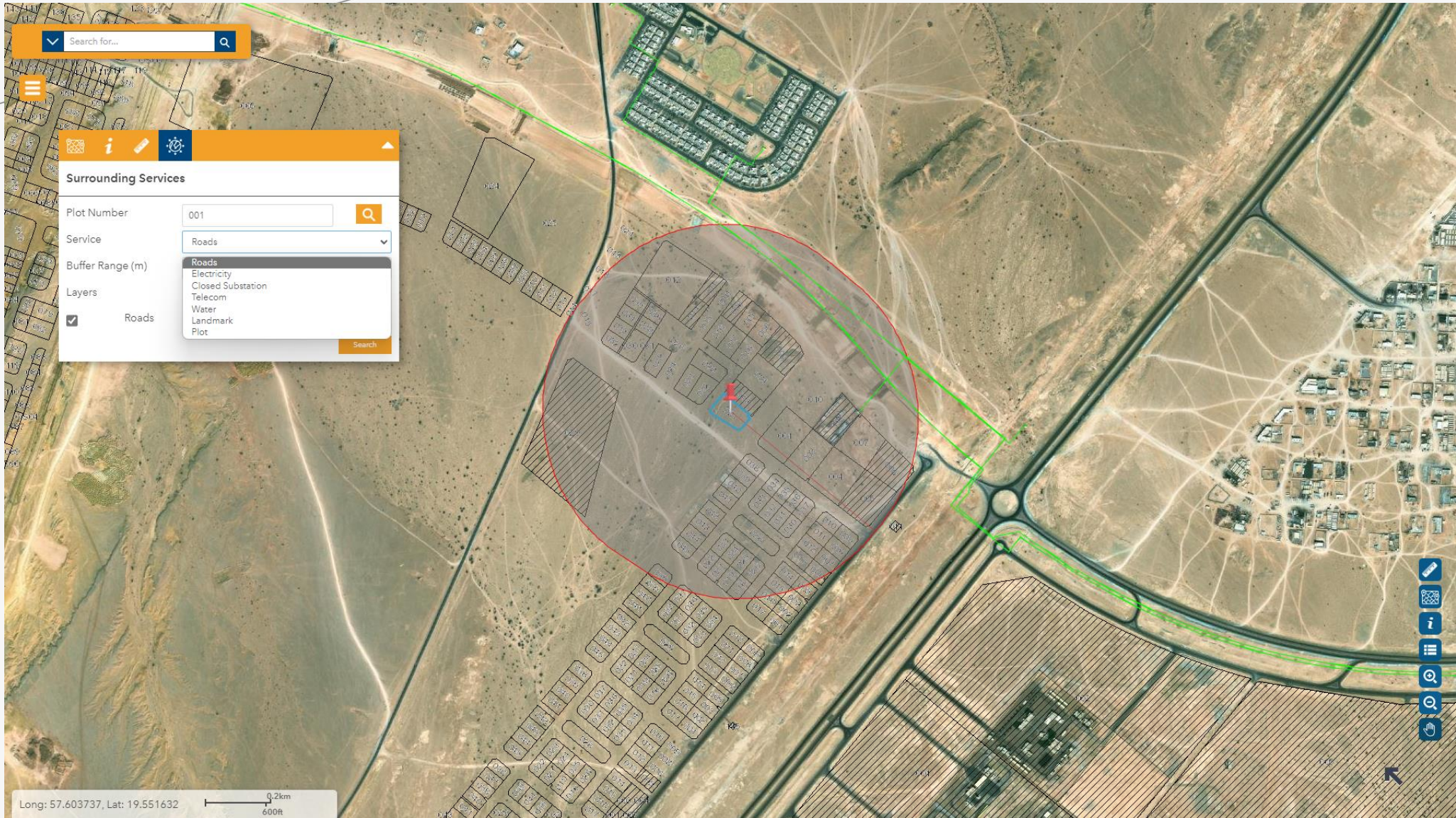
Measurement Results  
Length: 548.8

Long: 57.615702, Lat: 19.548401

100m  
400ft







Search for...

### Surrounding Services

Plot Number:

Service:

Buffer Range (m):

Layers:

- Roads
- Electricity
- Closed Substation
- Telecom
- Water
- Landmark
- Plot

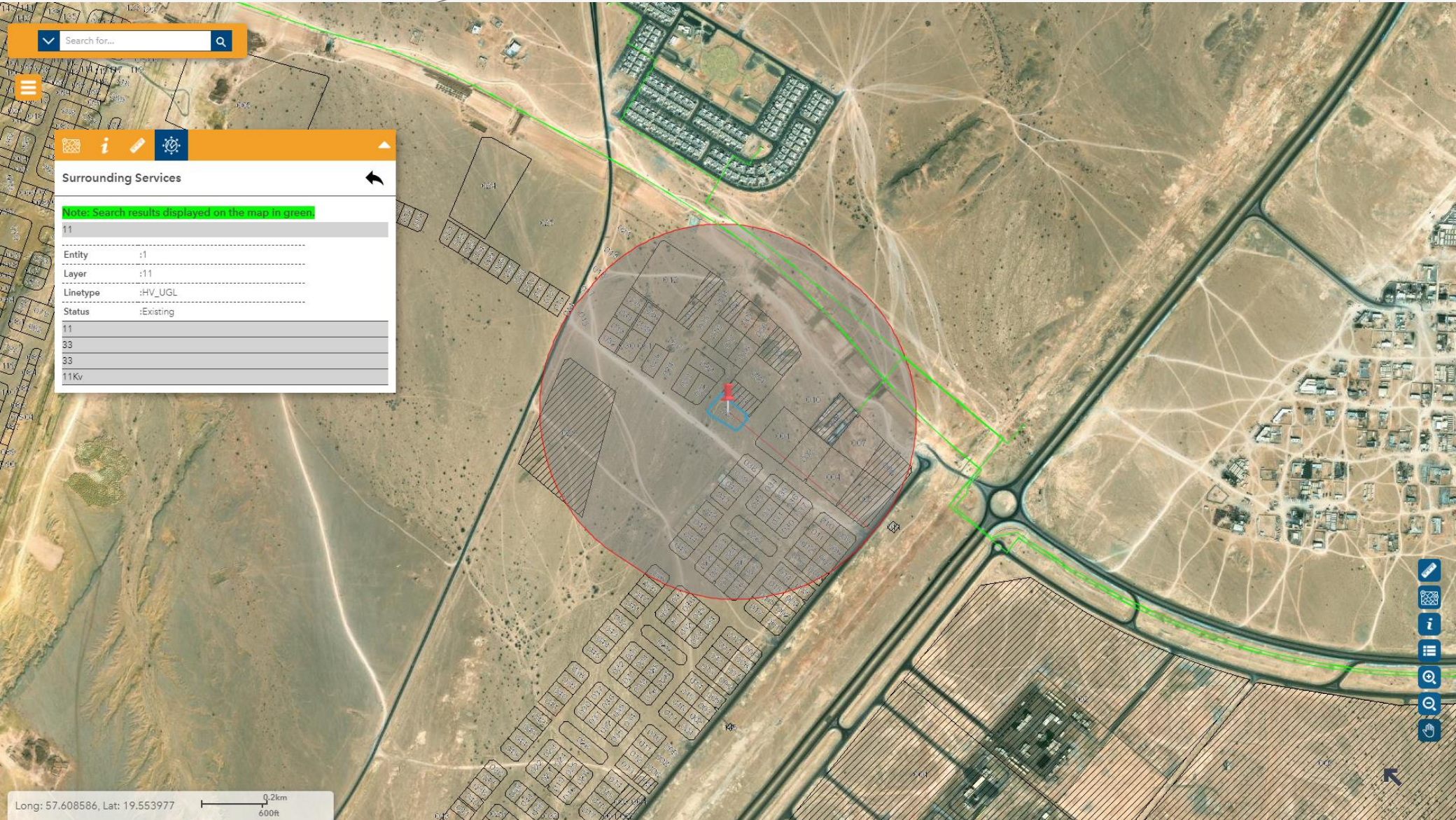
Search

Long: 57.603737, Lat: 19.551632

0.2km  
600ft







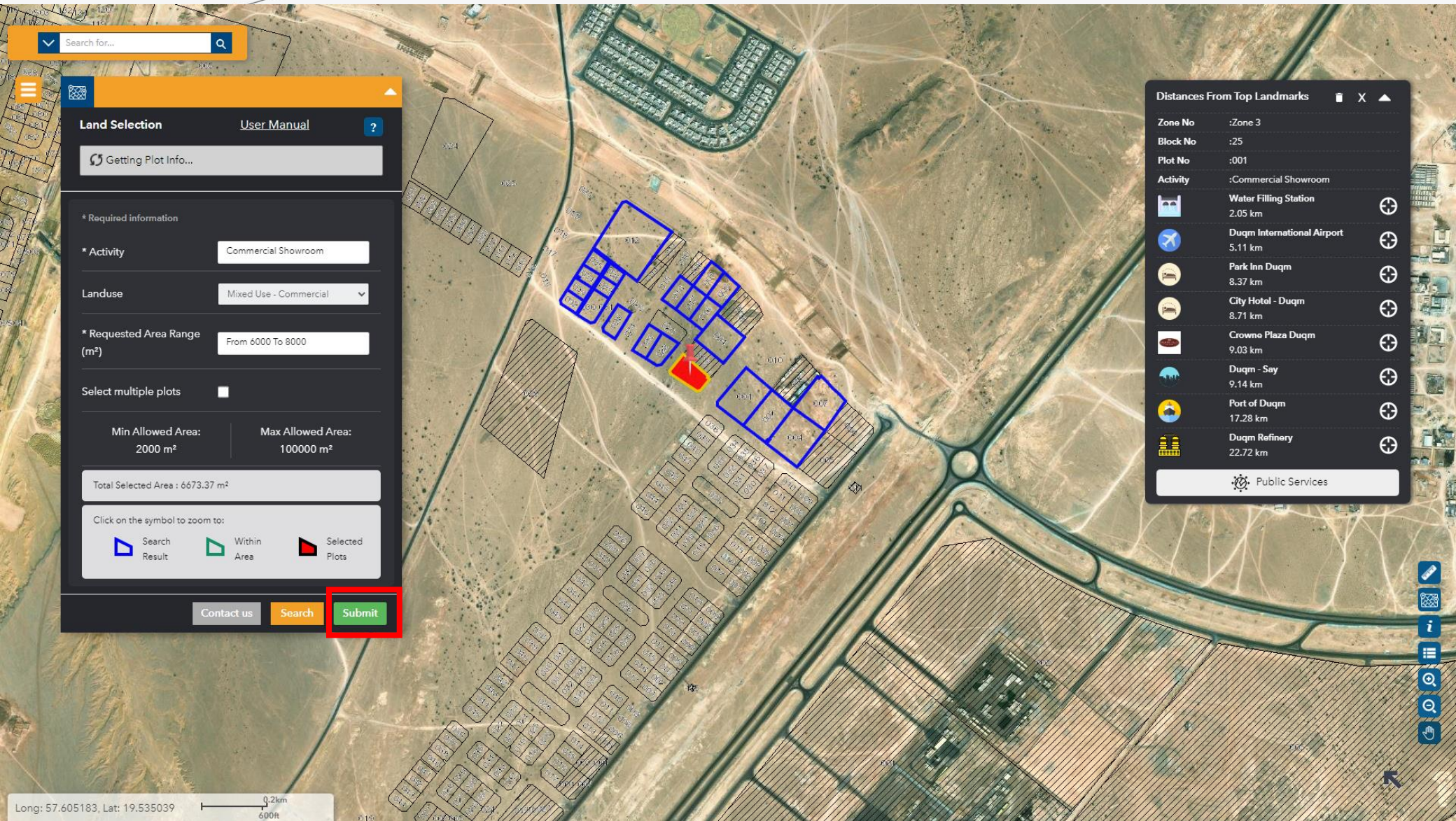
Surrounding Services

Note: Search results displayed on the map in green.

11	
Entity	:1
Layer	:11
Linetype	:HV_UGL
Status	:Existing
11	
33	
33	
11Kv	

Long: 57.608586, Lat: 19.553977





Search for...

### Land Selection

[User Manual](#)

Getting Plot Info...

\* Required information

\* Activity: Commercial Showroom

Landuse: Mixed Use - Commercial

\* Requested Area Range (m<sup>2</sup>): From 6000 To 8000

Select multiple plots:

Min Allowed Area: 2000 m<sup>2</sup> | Max Allowed Area: 100000 m<sup>2</sup>

Total Selected Area : 6673.37 m<sup>2</sup>

Click on the symbol to zoom to:

- Search Result
- Within Area
- Selected Plots

Contact us | Search | **Submit**

### Distances From Top Landmarks

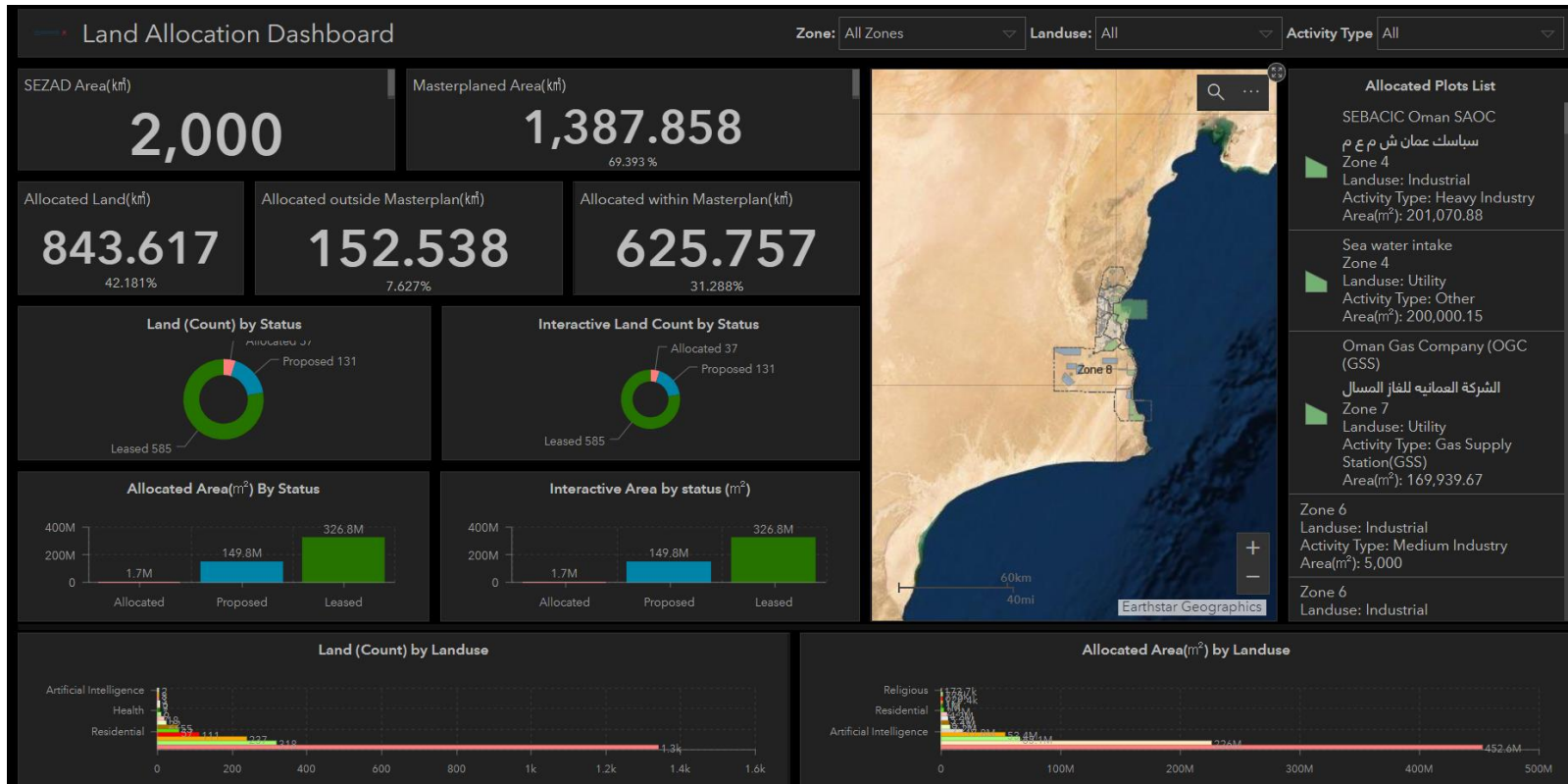
Zone No	:Zone 3
Block No	:25
Plot No	:001
Activity	:Commercial Showroom
	Water Filling Station 2.05 km
	Duqm International Airport 5.11 km
	Park Inn Duqm 8.37 km
	City Hotel - Duqm 8.71 km
	Crowne Plaza Duqm 9.03 km
	Duqm - Say 9.14 km
	Port of Duqm 17.28 km
	Duqm Refinery 22.72 km

Public Services





# Plots Data Dashboard



Land Allocation Dashboard



# Discussions



شكرا لحسن استماعكم

الهيئة العامة للمناطق الاقتصادية الخاصة والمناطق الحرة  
Public Authority for Special Economic Zones and Free Zones  
سلطنة عمان  
Sultanate of Oman

