



KERMAP

This document and its content are property of Kermap SAS. It shall not be communicated to any third party without the owners's written consent. © Kermap SAS – All rights reserved



KERMAP

your Earth Intelligence

47



5
years

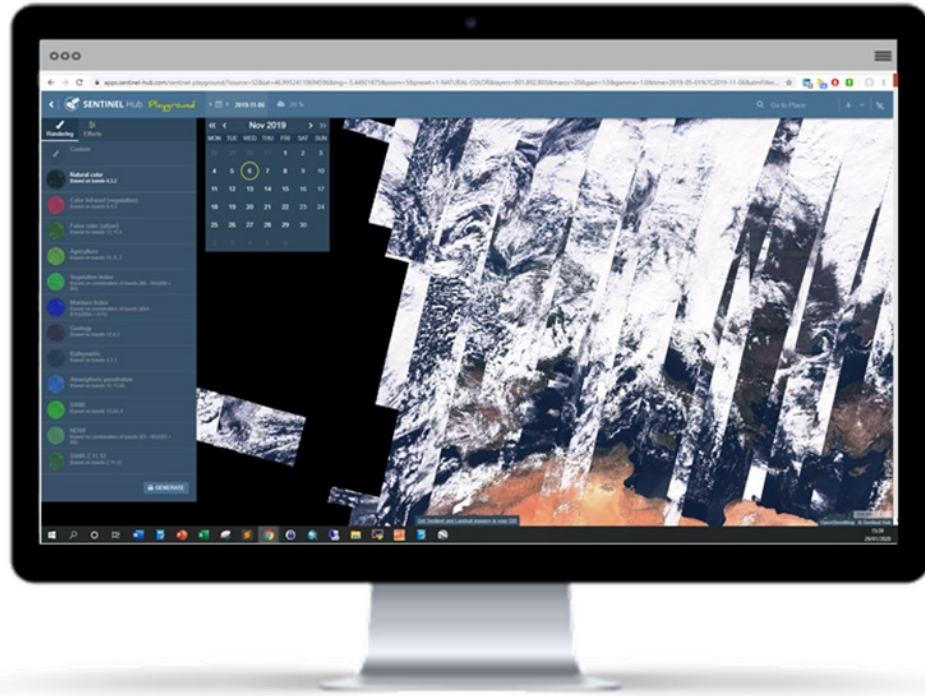


20
people



Governmental Institutions • Private sector • Corporate

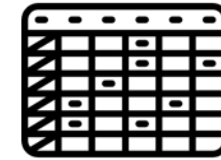
Satellite images are **valuable data** **but ...**



Hard to
access



Hard to
process

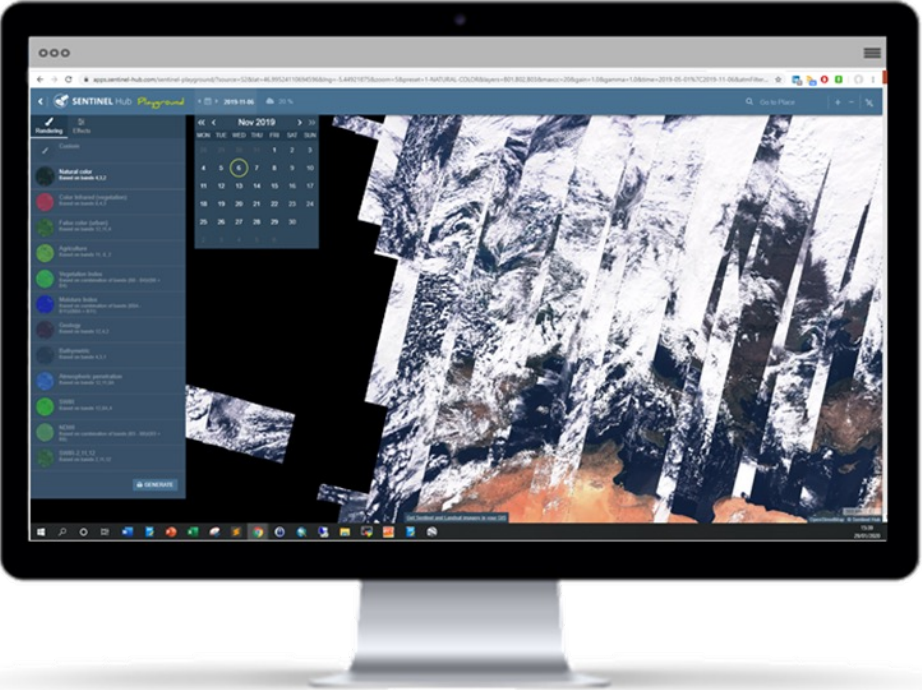


Hard to
analyse



Hard to
display

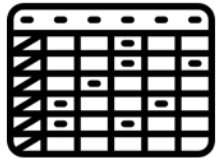
Satellite images are **valuable data** but ...



Hard to access



Hard to process



Hard to analyse



Hard to display



building solutions is **slow** and **expensive**



Satellite data for a changing world



SaaS Platform



Products on shelf



Scalable



Sovereignty



 nimbo.earth

Technology



**Copernicus
satellite images**

Optical & RADAR



Engine

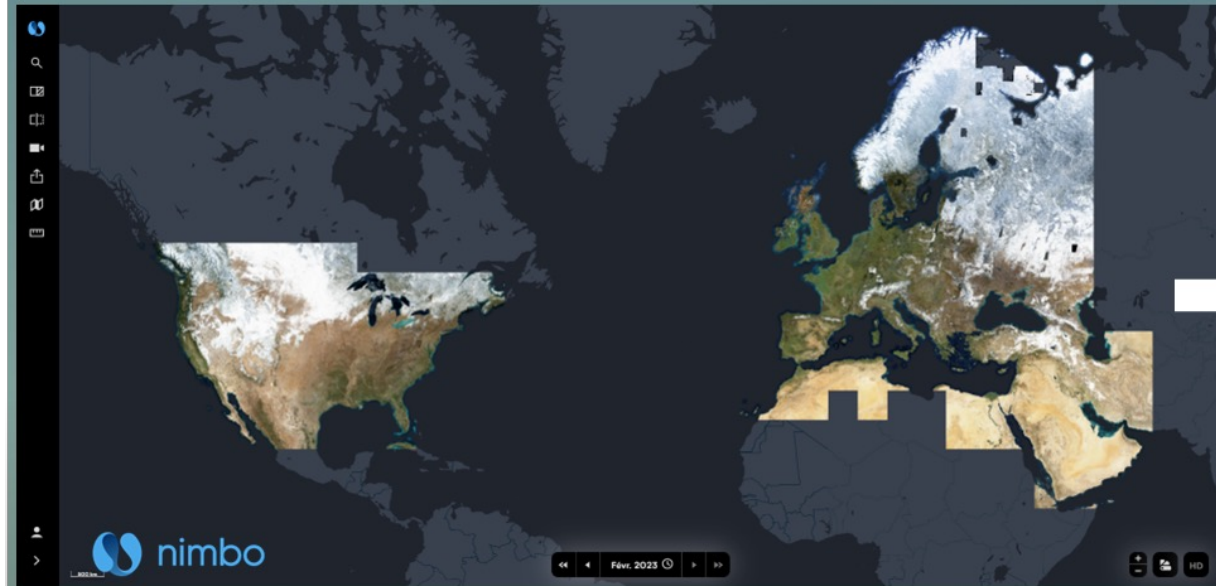
Clean, correct, analyse



**API, display,
reporting**

Monitoring, analytics,
basemaps

Roadmap



From November 2019



Since March 2023

NIMBO is global!



Earth basemaps



Global



Updated every months



Cloud-free



GIS-ready satellite maps



Natural



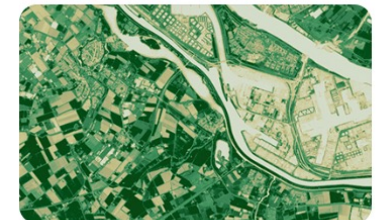
Infrared



Radar

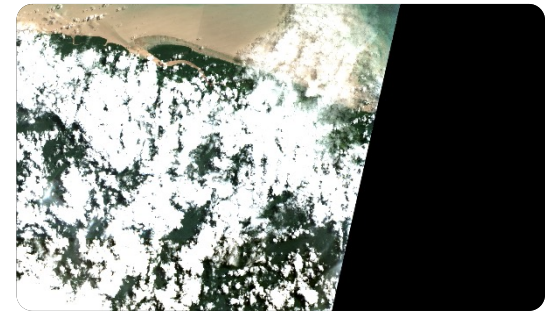
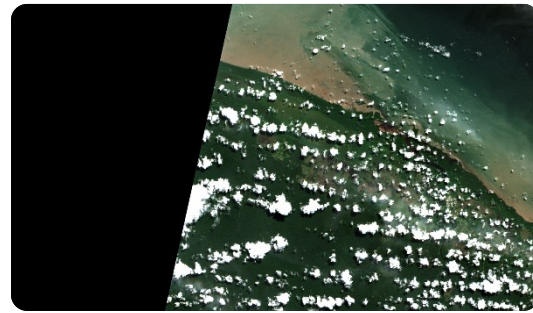
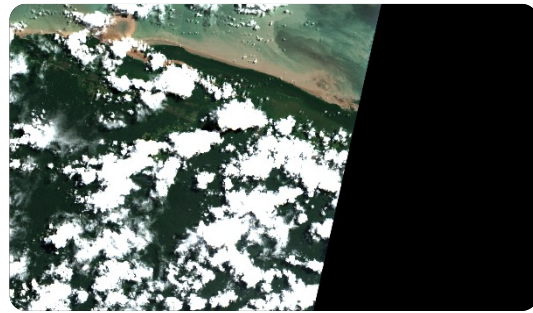
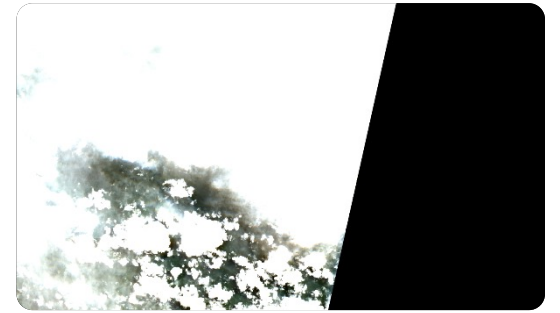
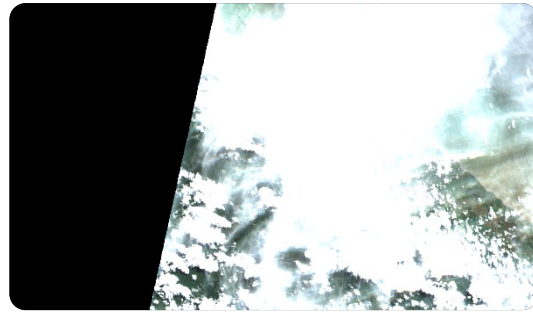
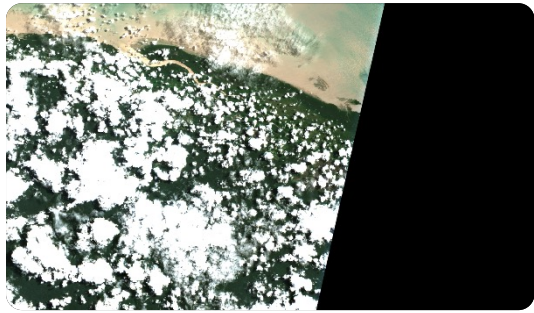
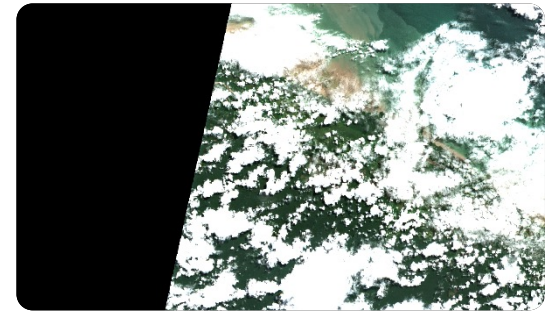
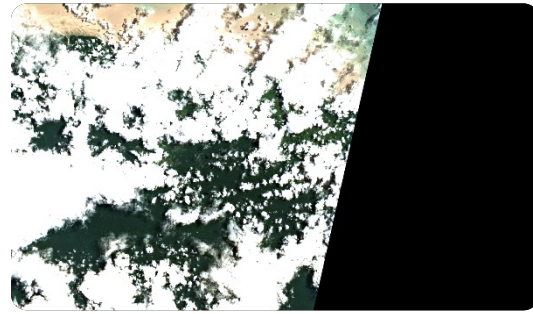
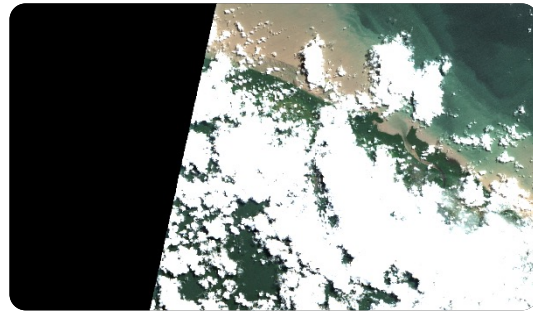
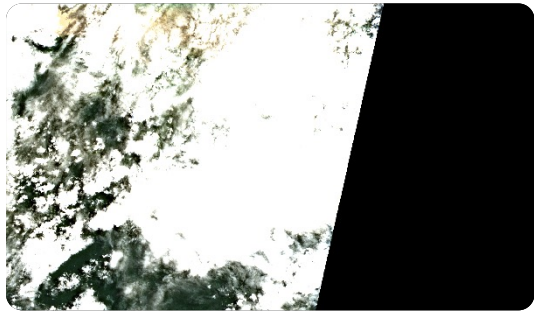


Vegetation



French Guiana

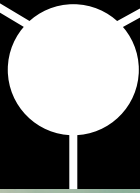
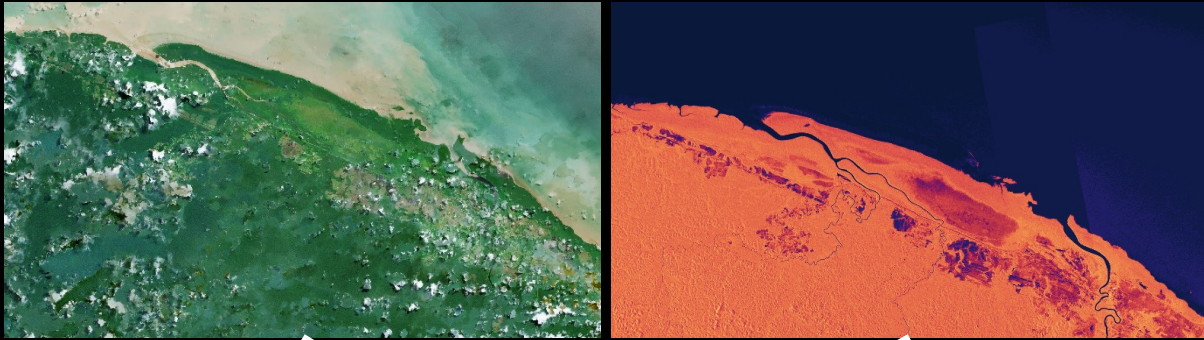






Basic monthly synthesis - may 2019

© Kermap



Gap-Filling

- Sentinel-1 SAR based
- Convolutional Network
- No GAN



nimbo

nimbo.earth

Nimbo Earth basemaps - may 2019

© Kermap - nimbo.earth

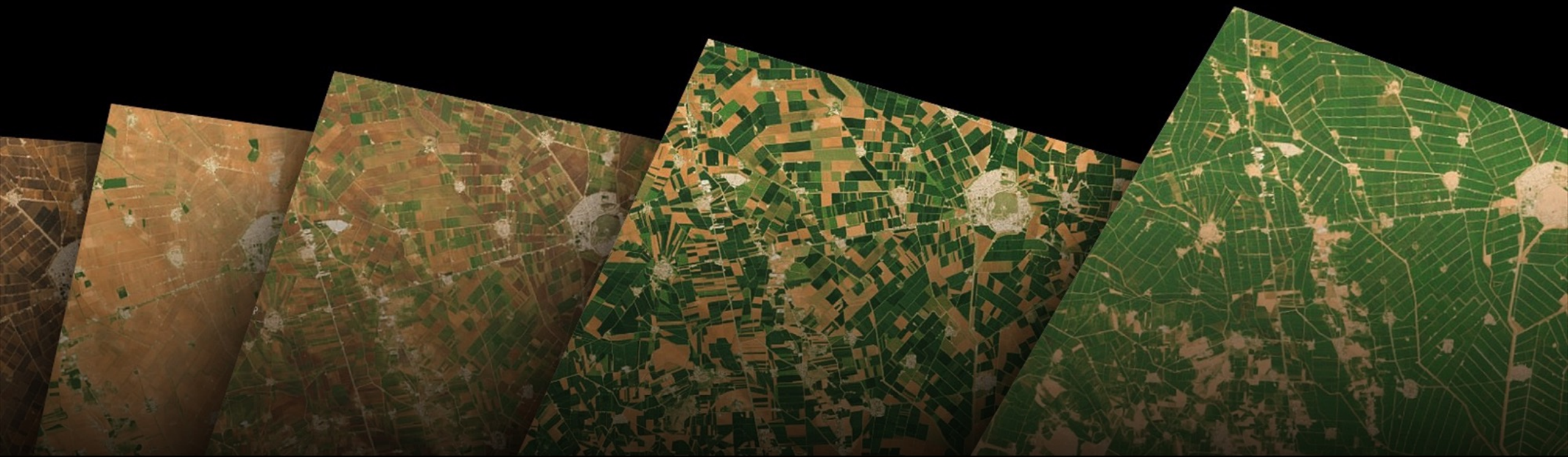


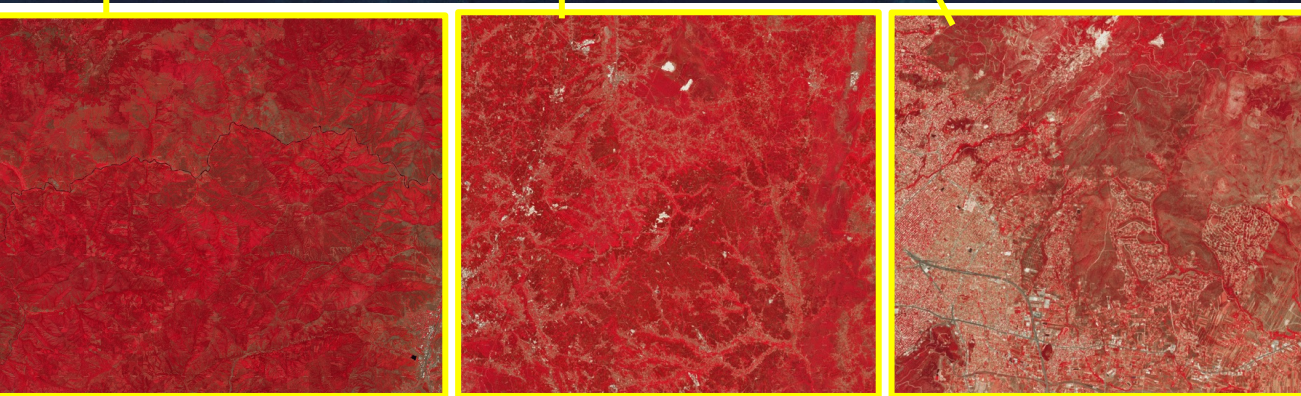
Planet Basemaps - NICFI program - 2019

© Planet



Use-Cases





USE CASE

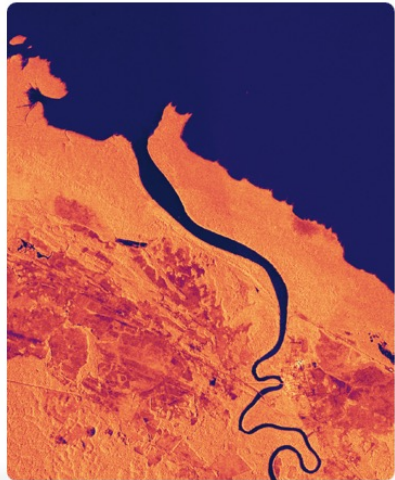
Wildfires Monitoring

- Post-event monitoring
- Global
- Homogeneous
- Suitable for a single processing chain

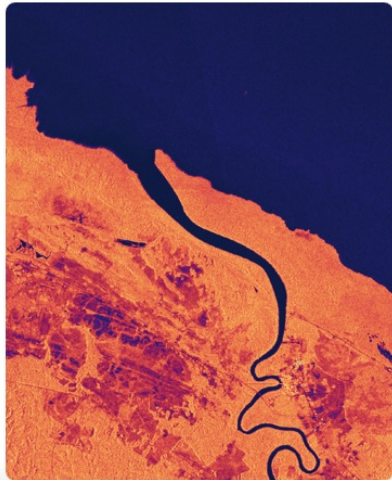
GOAL

- ✓ Continuous monitoring the damage caused by wildfires at the scale of a country or a continent

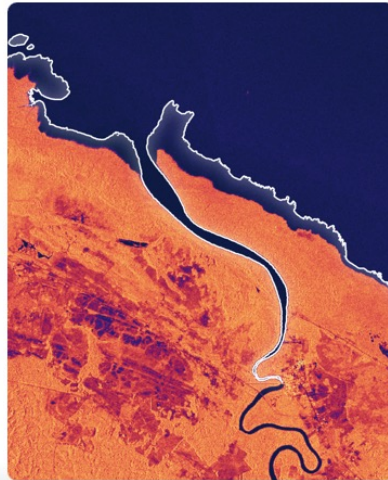
Identification of burned areas in 3 countries during summer 2022 (USA, Spain, Greece) © Kermap - nimbo.earth



Janvier 2019



Octobre 2022



Octobre 2022 + Janvier 2019 (Littoral)

Evolution of the coastline in French Guiana from January 2019 to October 2022

© Kermap - nimbo.earth

USE CASE

Coastline monitoring

- Landscapes monitoring
- Evolution of the coastline: coastal erosion, disappearance or positive evolution of mangrove areas, etc.
- Near real-time updates and alerts
- Automatic data upload via Nimbo API

GOAL

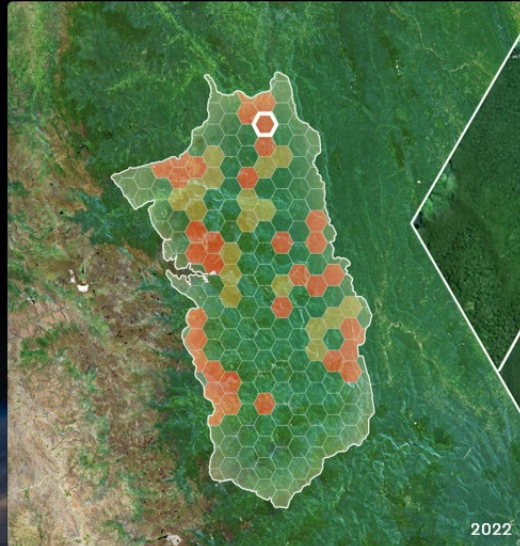
- ✓ Evaluate the quality of the mangroves, Anticipate the risks of submersion

Monthly land monitoring

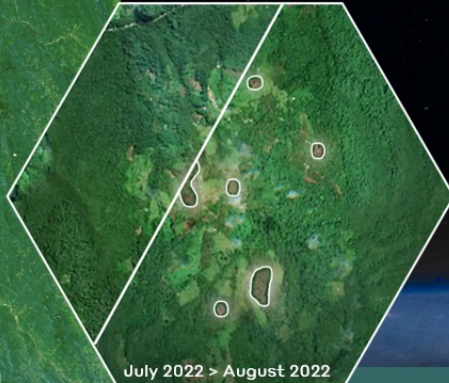
National park in San Martín, Peru



Sentinel-2 L2A acquisition and cleaning



Deep-learning processing



12,3 ha deforested over 2 months on patch

Analysis, API, reporting, data visualization

CAS D'USAGE

Deforestation monitoring

- Monitoring in cloudy areas
- Forestry practices: illegal deforestation, forest degradation, etc.
- Near real-time updates and alerts
- Automatic data upload via Nimbo API

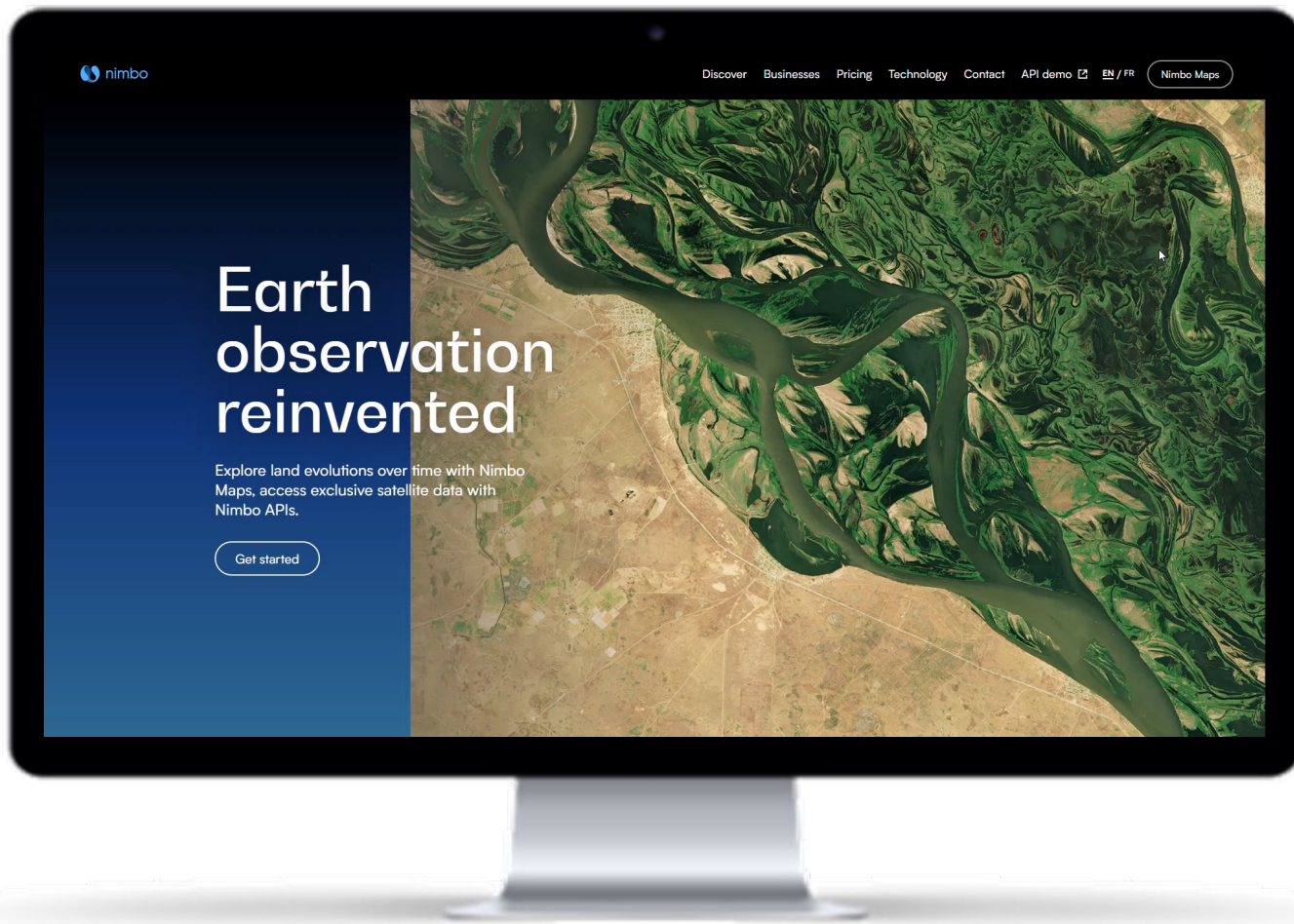
GOAL

✓ Monitoring territories, justifying respect for forest concessions

Change detection related to deforestation

© Kermap - nimbo.earth

Try it now!



<https://nimbo.earth/>



Innovation

Exclusive deep-learning process to deliver cloudless images of the Earth every month.



Created by Kermap

Our aim is to facilitate public access to satellite data, while providing new, quick and actionable information for professional use



Made in France

Nimbo Maps is the first 100% French satellite mapping solution, made and hosted in Rennes, Brittany.