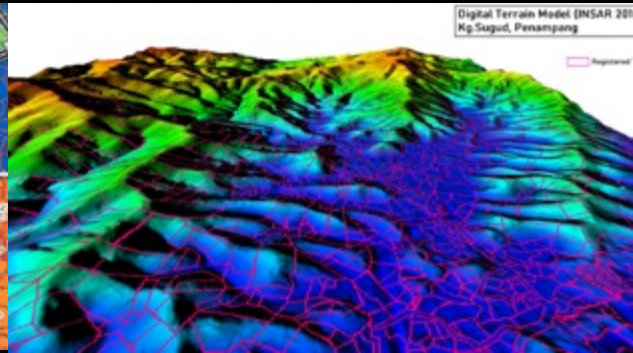




# GEOSPATIAL KNOWLEDGE FOR GOOD LAND GOVERNANCE IN SABAH.

*By Datuk Sr Bernard Liew Chau Min  
Director of Lands And Surveys Sabah  
MALAYSIA*



# Sabah, Malaysia

2



Land Area	: 7,410,300 ha
Land + Sea	: 11,148,000 ha
Islands	: 407 nos
Population	: 3,418,817 (2020)
GDP	: RM 78.7 Billion (USD 17.7 Billion)
Economy Growth:	4 – 5%
Main Sectors :	
1. Services	: 47.3%
2. Mining & Quarry	: 26.0%
3. Agriculture	: 15.9 %

**MAIN SECTORS OF ECONOMICS GROWTH FOCUS**

-  **AGRICULTURAL**  
Maximizing the state of economic growth potential and boost the economy of people.
-  **INDUSTRIAL**  
Attracting investment to increase production, driving economic growth, optimizing available resources as well as balancing the development between districts.
-  **TOURISM**  
Utilising the diversity of flora and fauna as well as the beauty of nature and multiculturalism.

# Land Administration In Sabah

3

## BACKGROUND

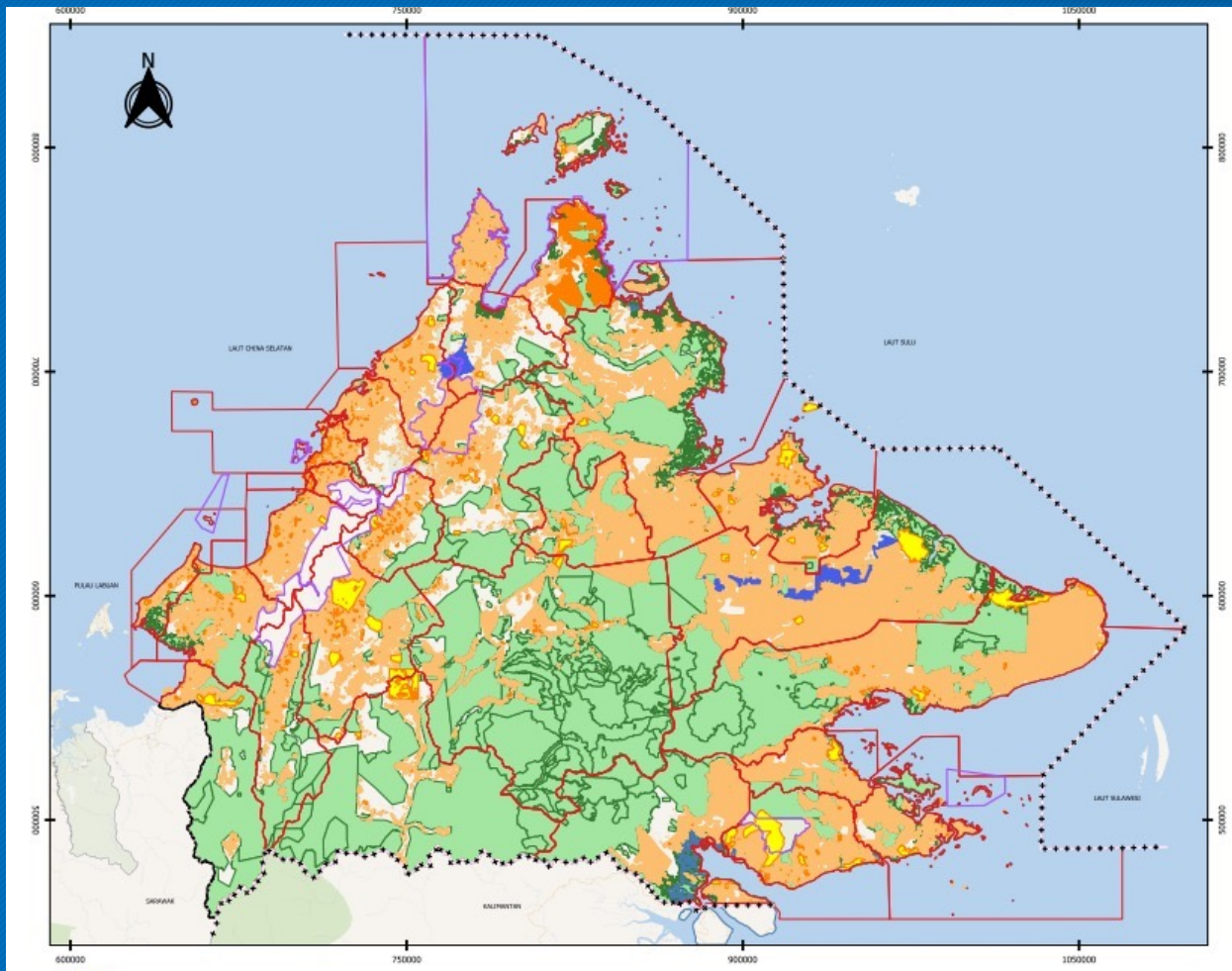
- ❑ Land Proclamation by BNBC in 1881- Land Tenure based on native customary law
- ❑ 1<sup>st</sup> Survey Plan Approved in 1883 & 1<sup>st</sup> Land Title registered in 1884
- ❑ Presently, governed by Sabah Land Ordinance 1930 - Torrens System of land registration
- ❑ Land is under the purview of the State Government
- ❑ The Sabah Lands and Surveys Dept is responsible for implementing the Land Administration system and maintaining land records.

## LANDS & SURVEYS DEPT : KEY RESPONSIBILITIES

- ✓ Land Alienation & Collection of Quit Rents
- ✓ Land Registration & Land Dealings
- ✓ Land Enforcement & Land Enquiries
- ✓ Land Valuation & Land Acquisition
- ✓ Land Development
- ✓ Mining & Quarry
- ✓ Cadastral Survey & Land Gazettement
- ✓ Special Native Land Affair (PANTAS)
- ✓ Mapping & Geocentric Control Stations.
- ✓ Geospatial Development & Management

# Land Distribution Profile Of Sabah (as of 1 Jan 2023)

4



**Total Sabah Land Area:**  
7,410,300 Ha (Land)  
11,148,000 ha (Land + Sea)

**Reserved Land  
(Conservation/Public Purposes):**  
4,323,810.32 Ha (58.47%)

**Alienated Land  
(Leases & Natives Land):**  
2,678,151.41 Ha (36.14%)  
420,636 Land Titles

Leases	= 195,768
Native Land Titles	= 224,868
<i>Subsidiary Land Titles</i>	= 28,002

# Good Land Governance Supports Sustainable Development

5

***“Sustainable development needs sound land administration.  
It is the key driver influencing the relationship Humankind to Land”  
(Bathurst declaration 1999)***

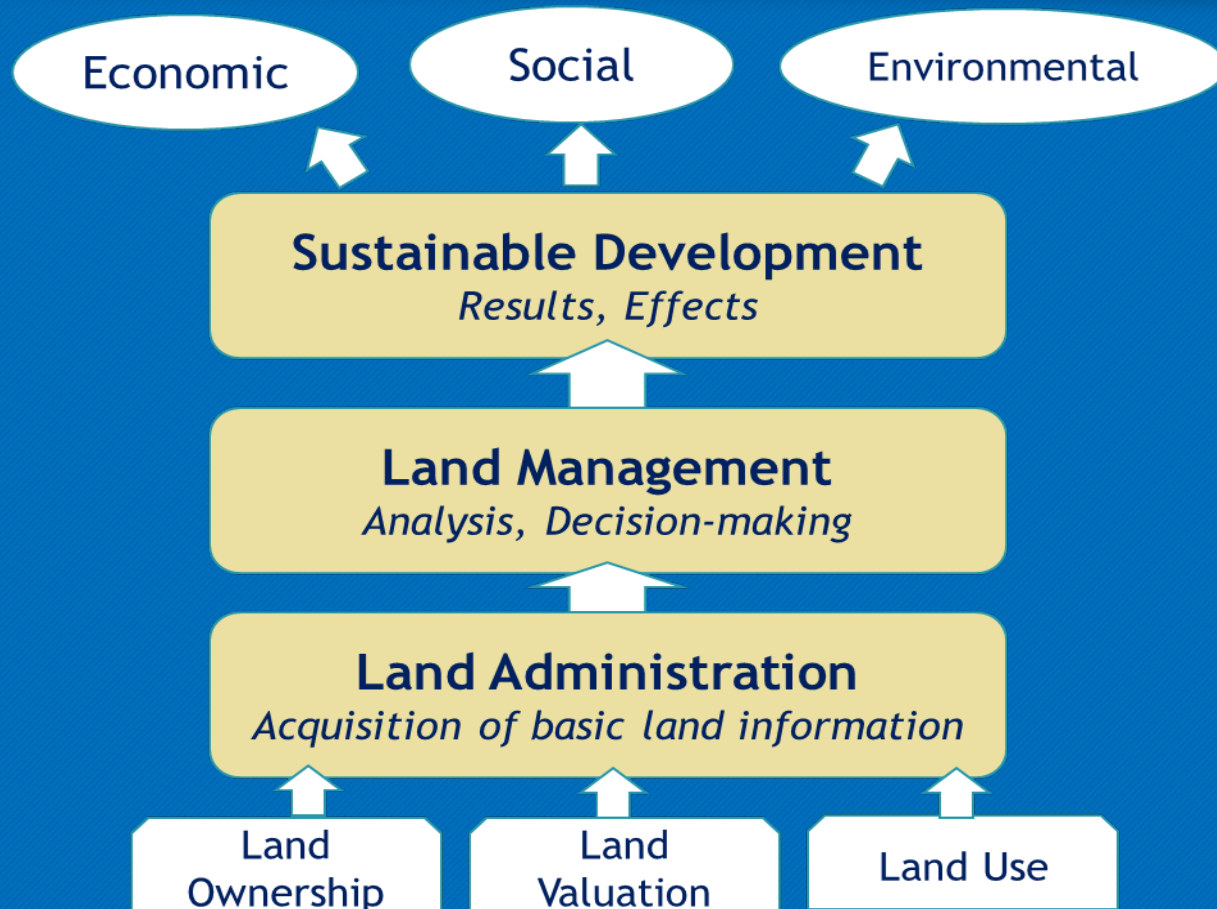
Good LG is essential for achieving SDGs, includes:

- ✓ Poverty reduction,
- ✓ Equitable distribution of Land,
- ✓ Environmental protection,
- ✓ Economic growth...



# Geospatial Data Is Essential For Good Land Governance

6



*“A good land administration based on the data and information on the parameters already defined could lead to good land management which triggers the results towards sustainable development addressing the three main pillars of sustainable development.”*

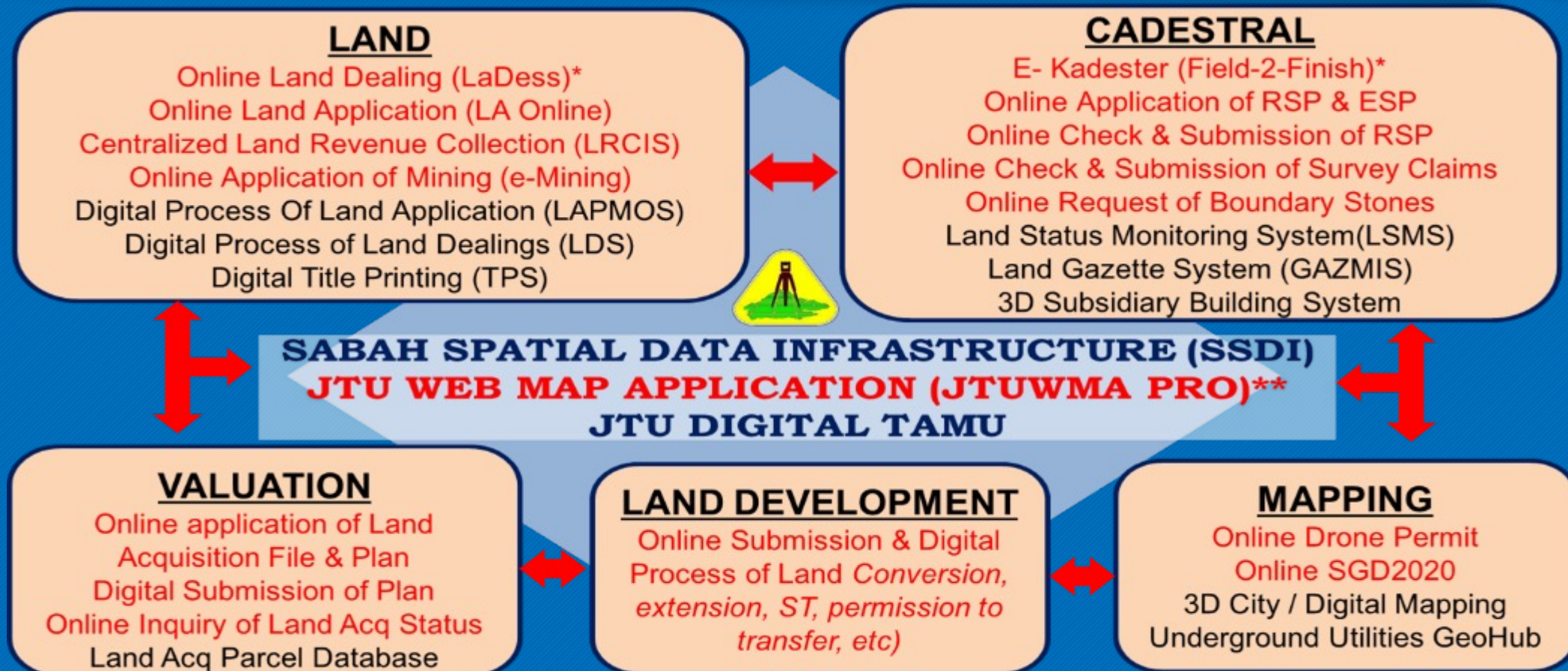
*(FIG Working Week 2009*

*Surveyors Key Role in Accelerated Development)*

# Development And Management Of Geospatial Data

## Sabah Lands And Surveys Department

7

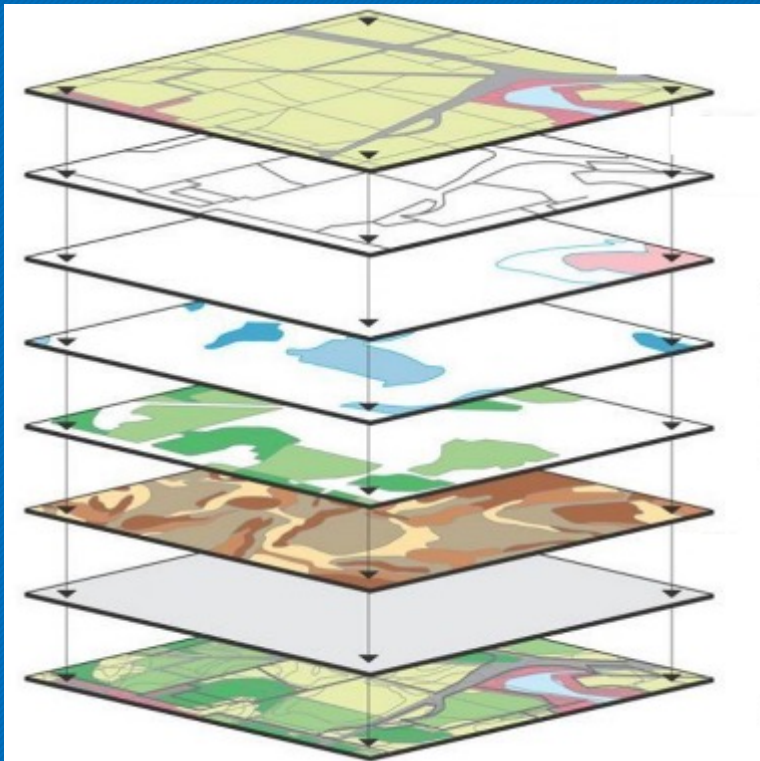


\* MS ISO 9001:2015 Certified

\*\* ESRI Malaysia Geo Innovation Award Winner 2017  
ESRI Special Achievement in GIS Award 2018

# Integration Of Geospatial Data

8



Integration of 22 Layers of Digital Information with search and location Capabilities.

Land Acquisition

Land Acquisition parcels, purpose, gazette etc

Land Zoning

Town & Country Planning Dept

Forest & Soil

Forestry Dept/ Agriculture Dept

Land Title Info

Ownership, dealings, tenure, Quit Rent etc

Others

Islands, Villages, Election Boundaries

Cadastral

Land parcels, Boundary marks, Govt reserves, TOL,

Map Indexes

1:12,500 & 1:2,500

Basemaps

Spot 6/7, Topo(Jupem), 23 types of free images, Districts Boundaries etc



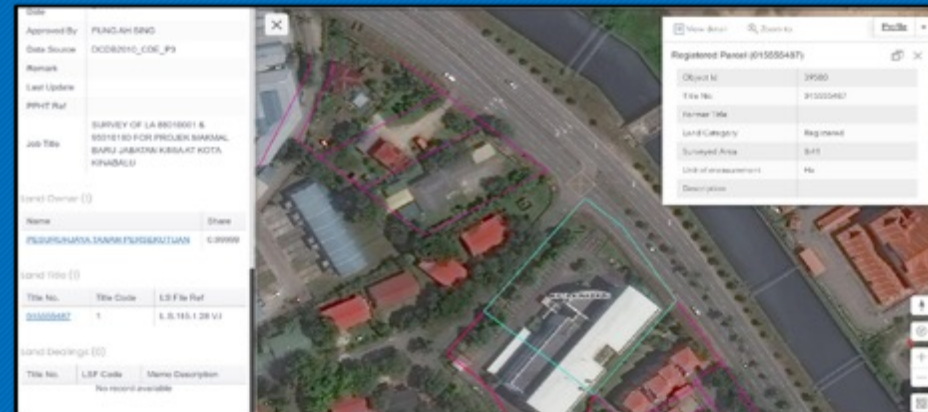
# Open And Easy Accessibility Of Geospatial Data

<https://pro.jtuwma.net>

9



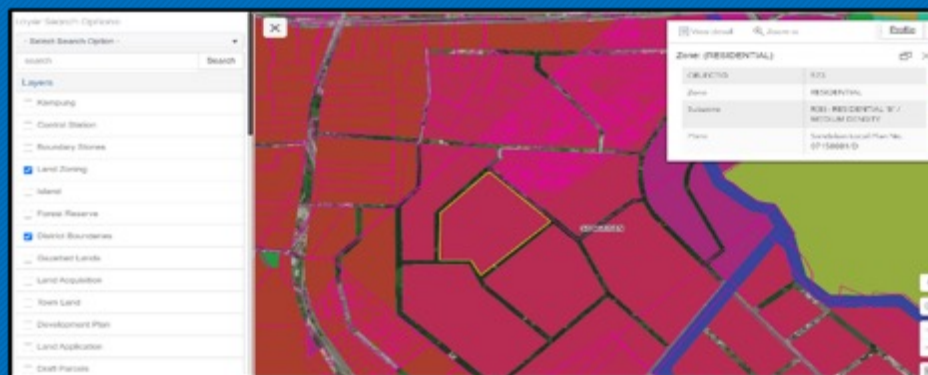
Multiple Data Integration (22 layers Of Data)



Land Title Info- Ownership, dealings etc



Land Acquisition Information



Land Zoning Information

# e-Services For The Public

<https://eservice.hq.jtu.my>

10



Welcome to  
**JTU e-Service**  
**JABATAN TANAH DAN UKUR SABAH**



e-Appointment



e-Commerce



JTUWMA Pro



Quit Rent Enquiry



Land Acquisition Enquiry



Land Dealings



Survey Portal



LA / Mining



Land Development



JTU Dashboard



e-SebutHarga /  
e-Tender



Info-PT



e-Land Enquiry



e-PERMIT



Batu Sempadan



e-Calibration

# GEOTAMU: Geospatial Marketplace

11



**GEOTAMU : Uncovering insights through dashboards**

# Geospatial Data For Decision-Makers

12



State Cabinet Meetings



District Land Utilization Meetings



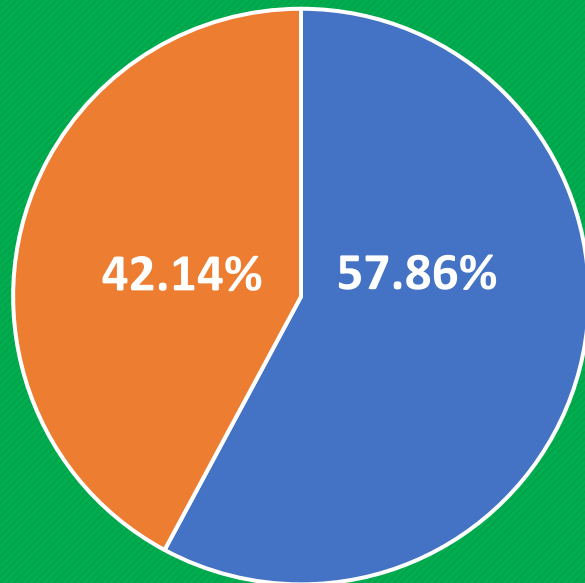
State Planning Councils



Departmental Meetings

## Percentages Of Land Titles Based On Gender

Male Female



As of 31 Mac 2023:

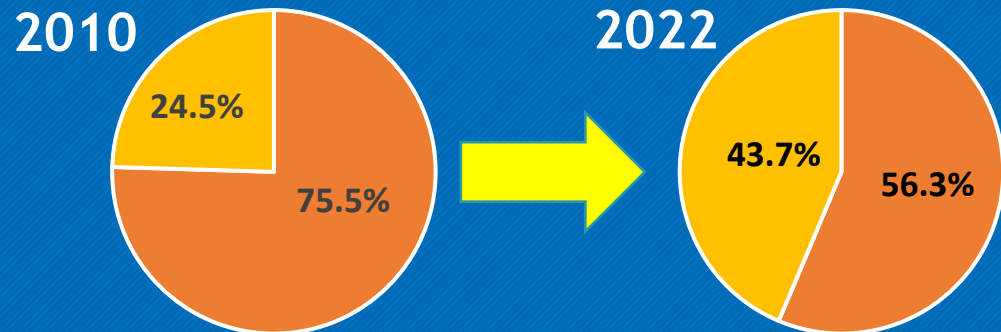
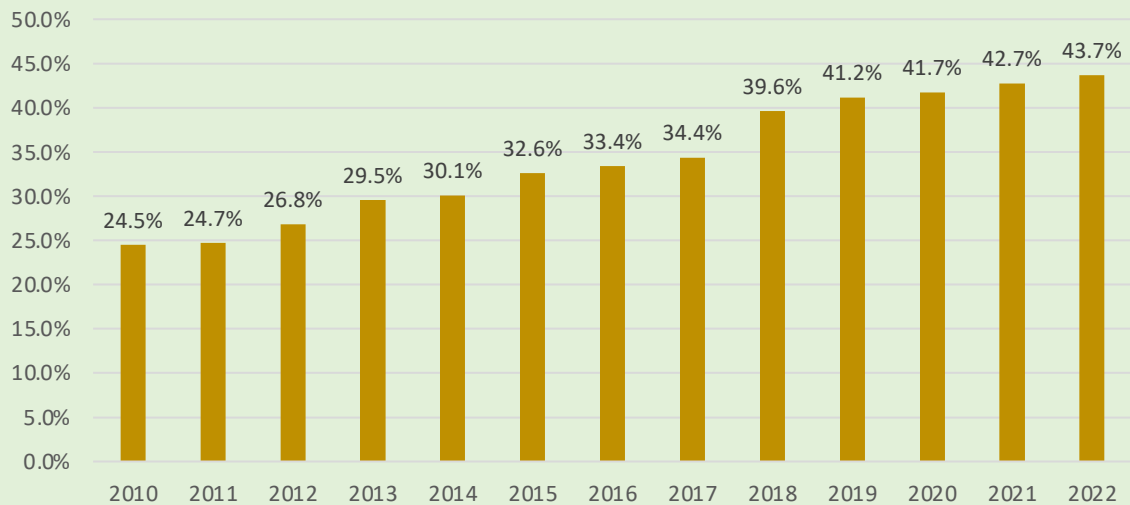
Male = 254,192 (57.86%)  
Female = 185,134 (42.14%)



# Good Land Governance Supports SDGs

14

### % of Native Lands Of Total Alienated Land



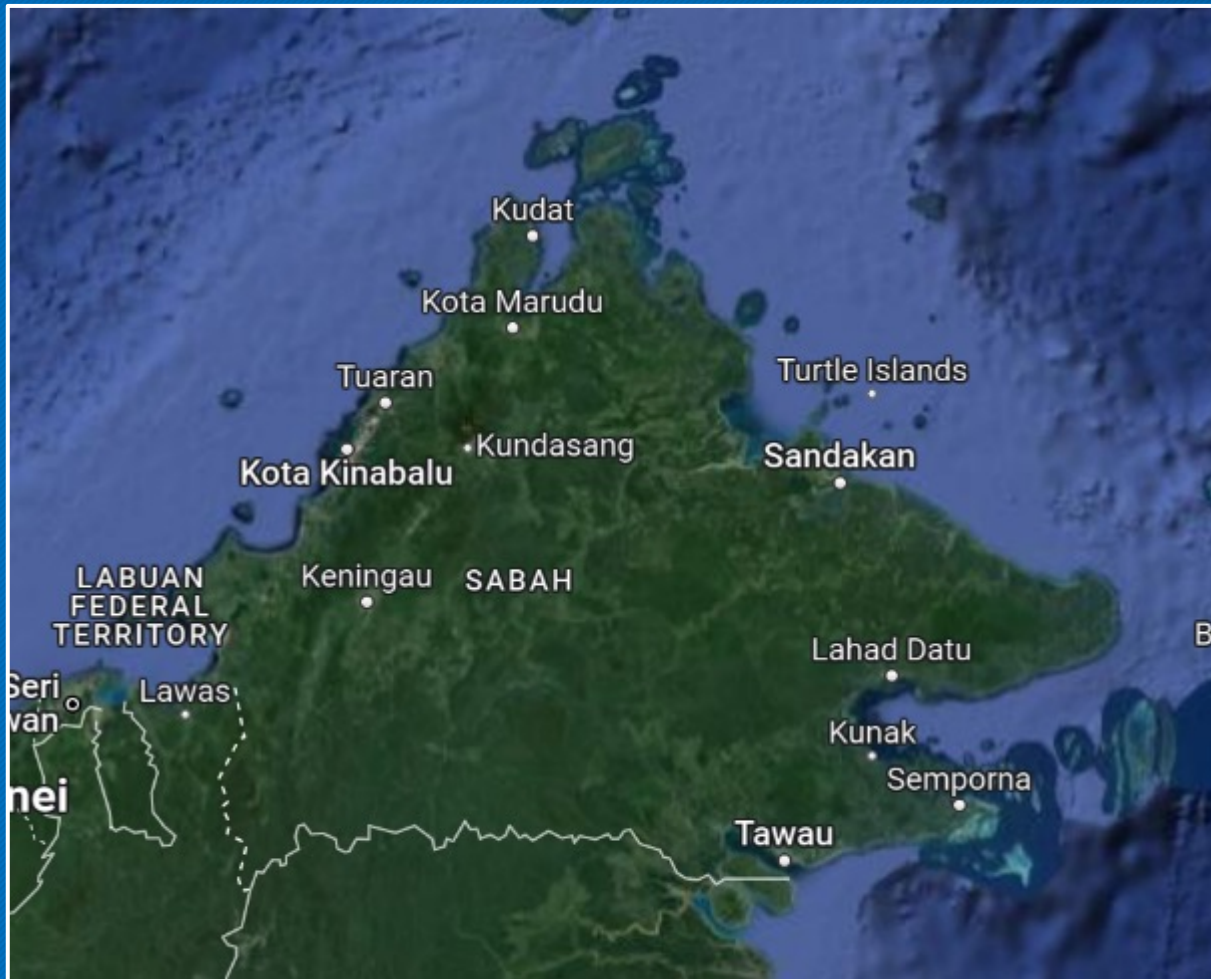
**SUSTAINABLE DEVELOPMENT GOALS**

**1 NO POVERTY**

**10 REDUCED INEQUALITIES**

# Good Land Governance Supports SDGs

15



- ✓ Forest Reserves : 3,574,468 ha (52%)
- ✓ Wildlife Rve/Parks : 308,337 ha (4.6%)
- ✓ Marine Parks : 956,295 ha

**Daily Express**  
INDEPENDENT NATIONAL NEWSPAPER OF EAST MALAYSIA

**Sabah maintains 64pc forest area**

SABAH'S 64 per cent forest cover is maintained by the Sabah Forestry Department, which has set a target to increase the state's forest cover to 68 per cent by 2020.

The Sabah Forestry Department (SFD) has set a target to increase the state's forest cover to 68 per cent by 2020. The SFD is currently managing 64 per cent of the state's land as forest, which is a significant achievement.

The SFD is currently managing 64 per cent of the state's land as forest, which is a significant achievement. The SFD is currently managing 64 per cent of the state's land as forest, which is a significant achievement.

**SUSTAINABLE DEVELOPMENT GOALS**

**13 CLIMATE ACTION**

**14 LIFE BELOW WATER**

**15 LIFE ON LAND**

- ❑ Good Land Governance is essential for promoting Sustainable development;
- ❑ Reliable Geospatial data is necessary in supporting good land governance especially in decision-making;
- ❑ Geospatial data should be up-to-date, complete, accurate, open & easily accessible.
- ❑ The use of geospatial data in Land Administration of Sabah has resulted in good land governance that support the UN Sustainable Development Goals.



Thank You

Datuk Sr Bernard Liew Chau Min

Sabah Lands And Surveys Department

: [Bernard.liew@sabah.gov.my](mailto:Bernard.liew@sabah.gov.my)

: [jtu@sabah.gov.my](mailto:jtu@sabah.gov.my)

: <https://jtu.sabah.gov.my/homepage/>