

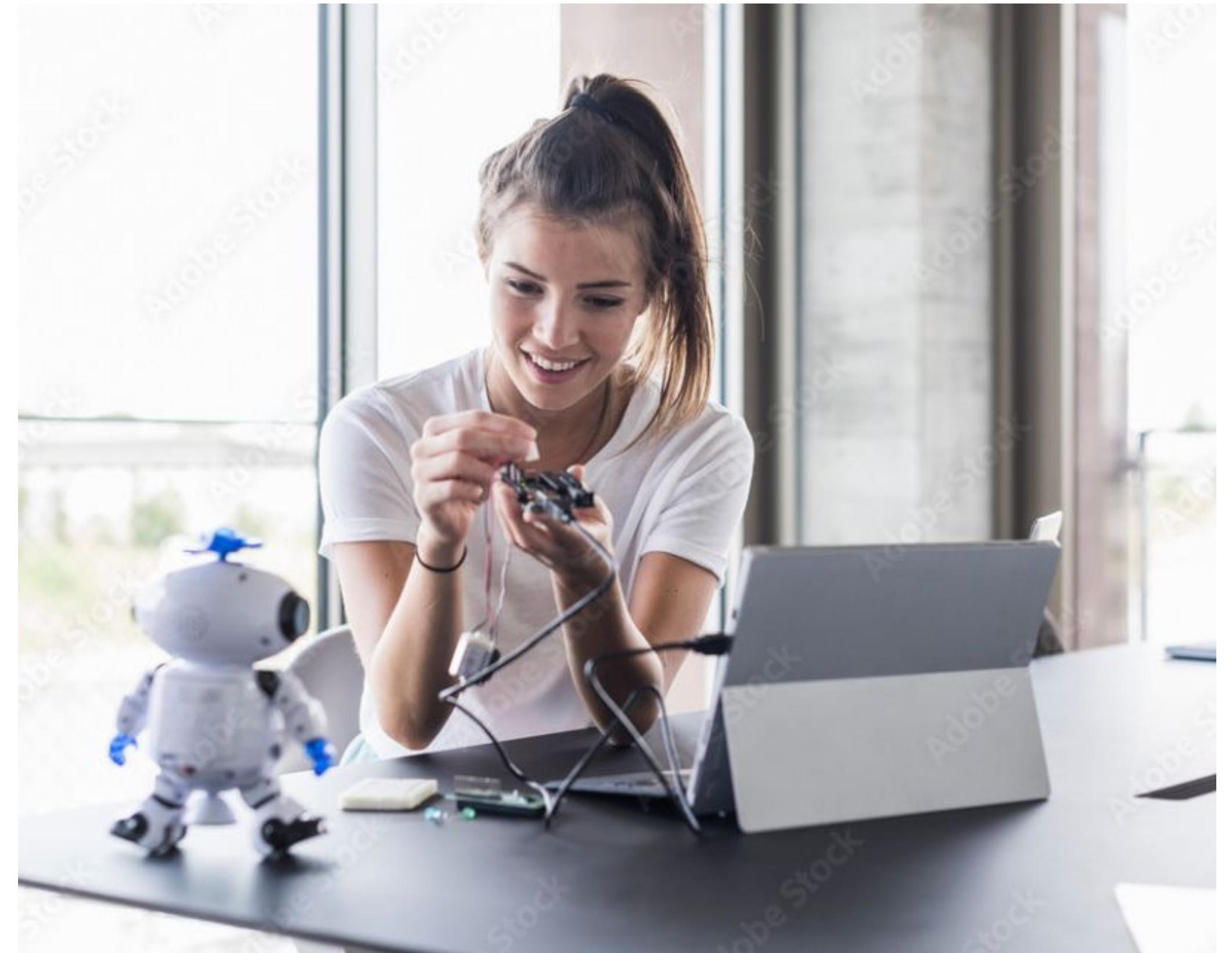


The Location Innovation Hub is a centre of excellence in location

Antti Jakobsson, GSWF 5th May 2023

This is Location Innovation Hub

- Coordinated by Finnish Geospatial Research Institute and services are provided with a partner network.
- Target audience: businesses and public organizations.
- Tools, testing infrastructure, business and technical consultation, and training.
- Funding opportunities.
- We focus on four different themes: Built Environment, Bioeconomy, Health and Wellbeing, and Transportation and Logistics.
- Three key technology sectors: AI and ML, High Performance Computing, and Cybersecurity.



Location Innovation Hub as a part of EDIH-network



- European Digital Innovation Hubs (EDIHs) are part of the EU's new Digital Europe Programme.
- Function as service points that boost digital investment and, in particular, the digitalization of SMEs.
- European not-for-profit actors
- Operation period 2023-2025 + possible extension for 4 years
- More information: <https://digital-strategy.ec.europa.eu/en/activities/edihs>



152 EDIHs around Europe

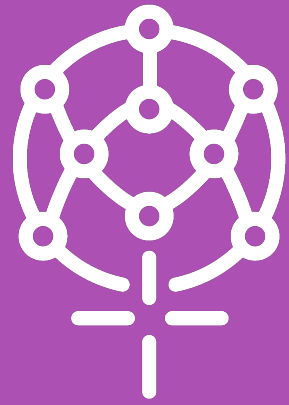


321 million euros funding for the EDIHs



4 Finnish EDIHs (LIH, Finnish AI Region, Health Hub Finland ja Robocoast)

Value is created together

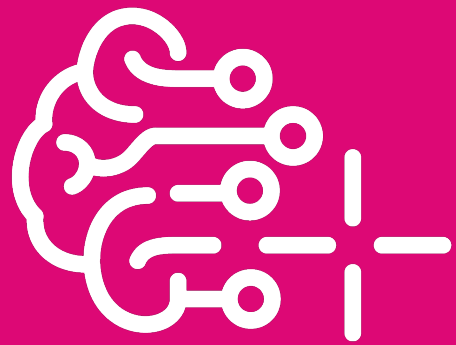


10 business partners

15 universities, public
organizations, and associations

22 associated partners

Knowledge transfer and services



7 reference data spaces

200 spatial data services

600 data sets

5 novel sensor data sets

50 000 potential location data
services available through
European Data Portal

Themes we are focusing on



Built Environment

Bioeconomy

Health and Wellbeing

Transportation and
Logistics

GIS business accelerators



- Interoperability of location and other data
- Next generation navigation space
- Precise positioning

- Open House concept
- GeoMob Finland
- Webinars and other events
- Positio-magazine and newsletter

Communication and
Matchmaking

Discovery of strategic
challenges and business
opportunities

Maturity Assessment

- Testing infrastructure
- Training
- Developer consultancy
- Reference data spaces and AI solutions

Innovation ecosystem
Innovation architecture

- Co-creation through challenges and Location Innovation Programme
- Other networks
- Business consultancy

Co-creation
projects

New solutions in
public and industry
sectors

New joint offerings
by SMEs

Key outcomes expected

Data spaces

Work on reference data spaces to establish the link between geodata and other data. Seeking funding for these both in Finland and in Europe.

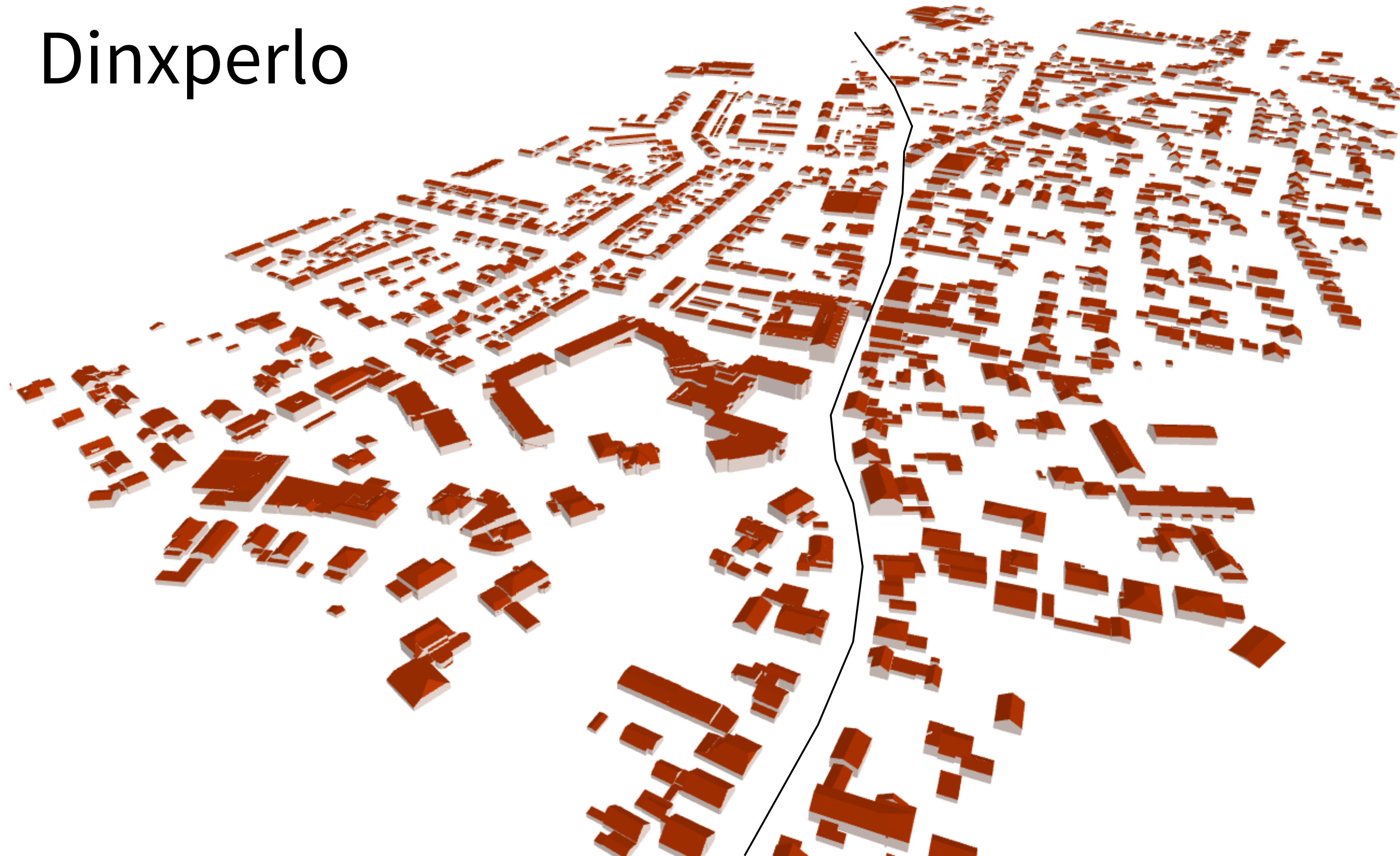
Innovations

Work on creating new innovation and business in location data and services. Create European based solutions, for example Location API business manual. Data integration guidance.

Test environments

Providing test before invest services: GeoE3 platform, next generation navigation space in Otaniemi, urban test environments, novel datasets and test areas.

The Netherlands Dinxperlo



Germany
Suderwick

Partners and Associated partners



Contact the LIH office staff

- **Project administration:** Antti Jakobsson
antti.jakobsson@nls.fi
- **Networks, co-operation & customer success:** Joonas Jokela
joonas.jokela@nls.fi
- **Technical support:** Faris Alsu hail
faris.alsuhail@nls.fi
- **Communication:** Anniina Lundvall
anniina.lundvall@nls.fi and Maria Vilppola
maria.vilppola@nls.fi

locationinnovationhub@nls.fi





**Location
Innovation
Hub**

Thank you



This project has received funding from the European Union's Digital Europe Programme under grant agreement No: 101083680 — LIH — DIGITAL-2021-EDIH-01

