

Geospatial and BIM Convergence for Digital Built Environment

Marc Goldman

AEC Industry Solutions Director
Esri, Inc



Where we came from... ...and how far we've come

Marc Goldman

AEC Industry Solutions Director
Esri, Inc



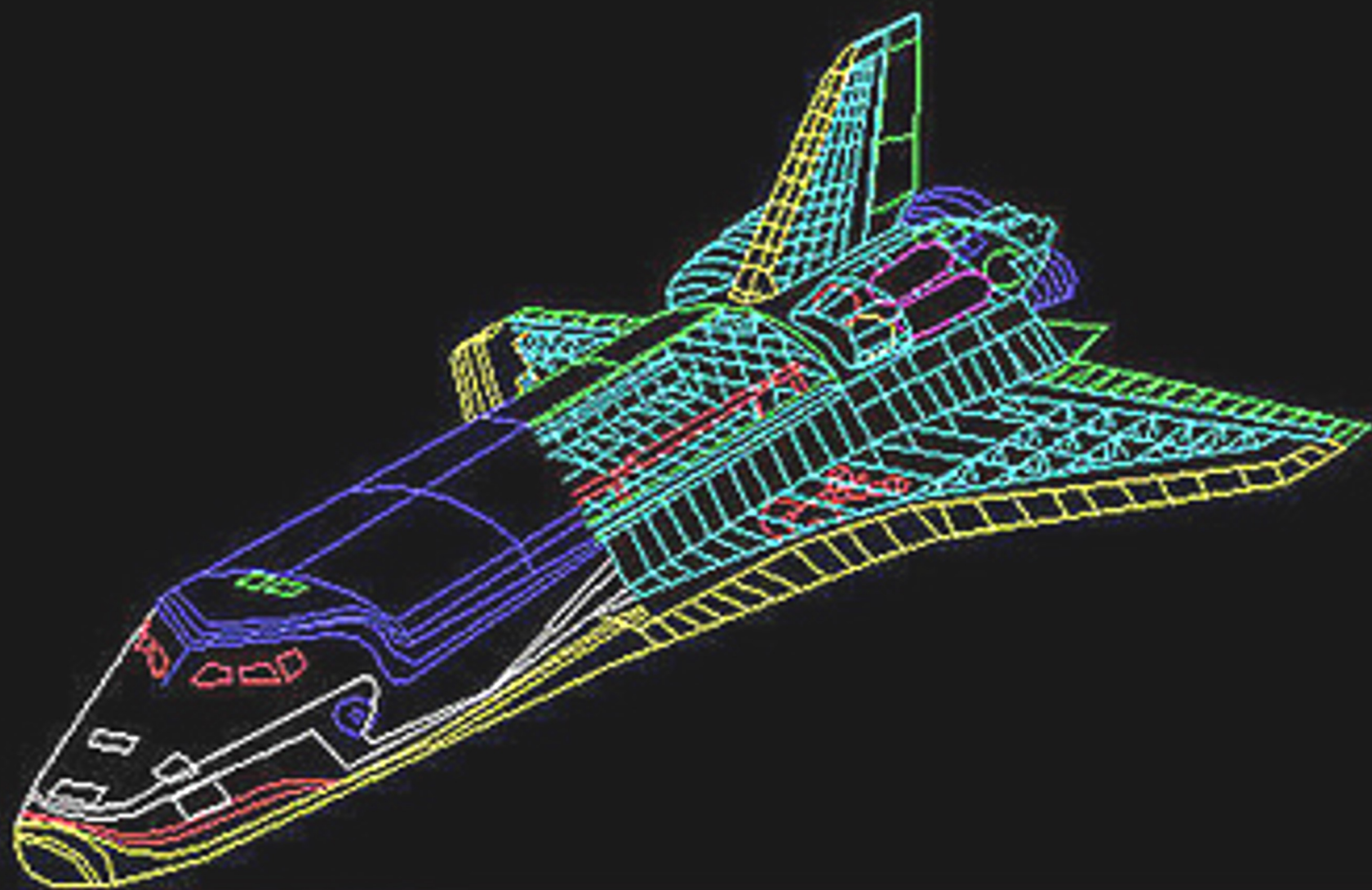
1960s



Layer 0

-0.2246,0.2758

R O O T
M E N U

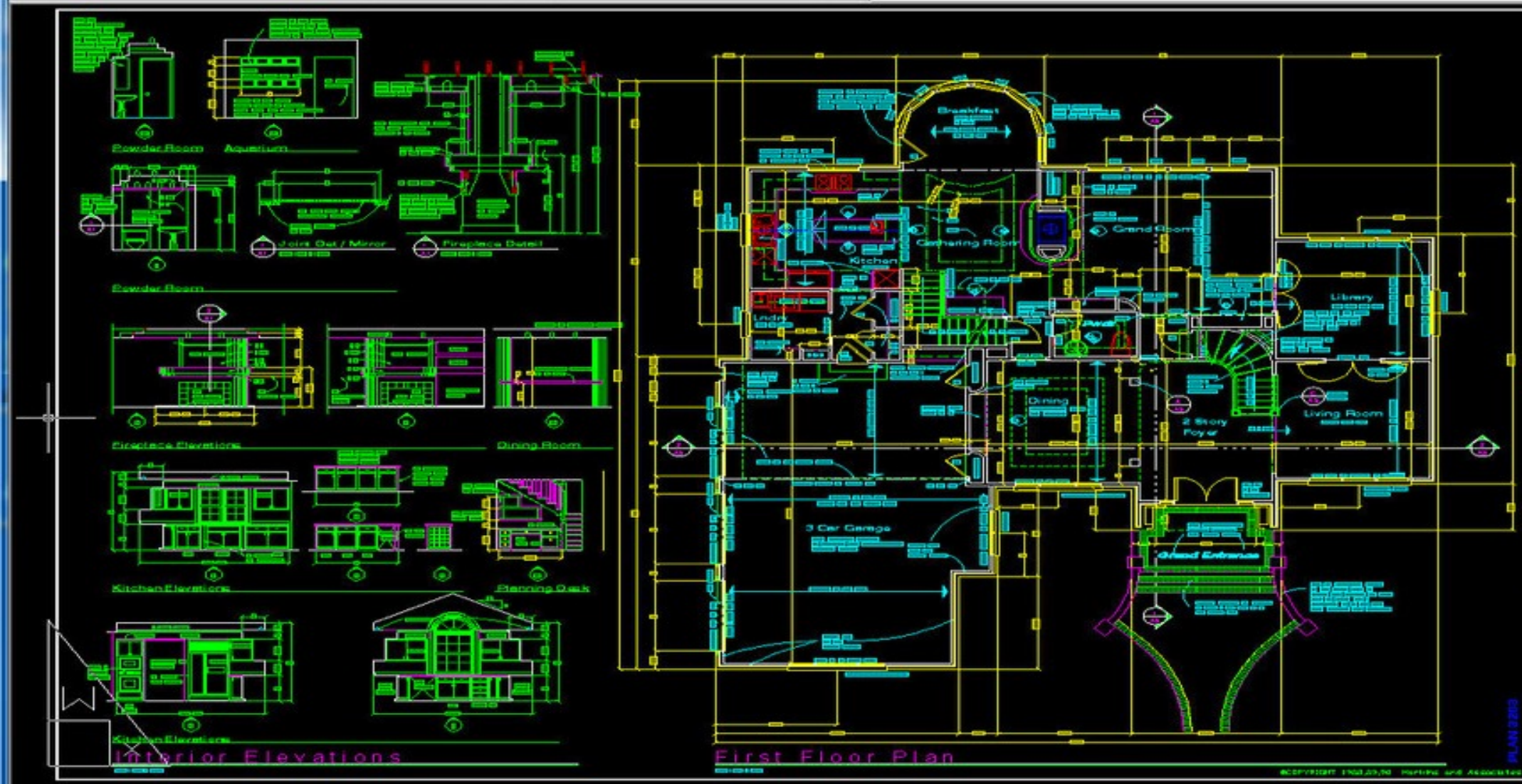


BLOCKS
DIM:
DISPLAY
DRAW
EDIT
HATCH:
INQUIRY
LAYERS
MODES
PLOT
UTILITY

Loading menu file...

Command:

1980s



A Residence for
Mr. Greg Wilms
Cleveland, Ohio

INTERIOR ELEVATIONS

FIRST FLOOR PLAN
and
INTERIOR ELEVATIONS

001

PLAN 2000

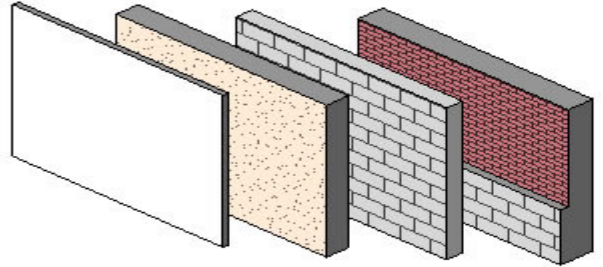
Command:
AutoCAD Bonus Menu loaded.
Command:

Home Insert Annotate Modify Massing & Site Collaborate View Manage

Wall	Door	Window	Component	Column	Roof	Curtain System	Model Text	Railing	Level	Grid	Beam	Area	Set
					Ceiling	Curtain Grid	Model Line	Ramp			Brace	Legend	Show
					Floor	Mullion	Model Group	Stairs			Foundation	Tag	Ref Plane
							Model	Circulation	Datum		Structure	Room & Area	Work Plane

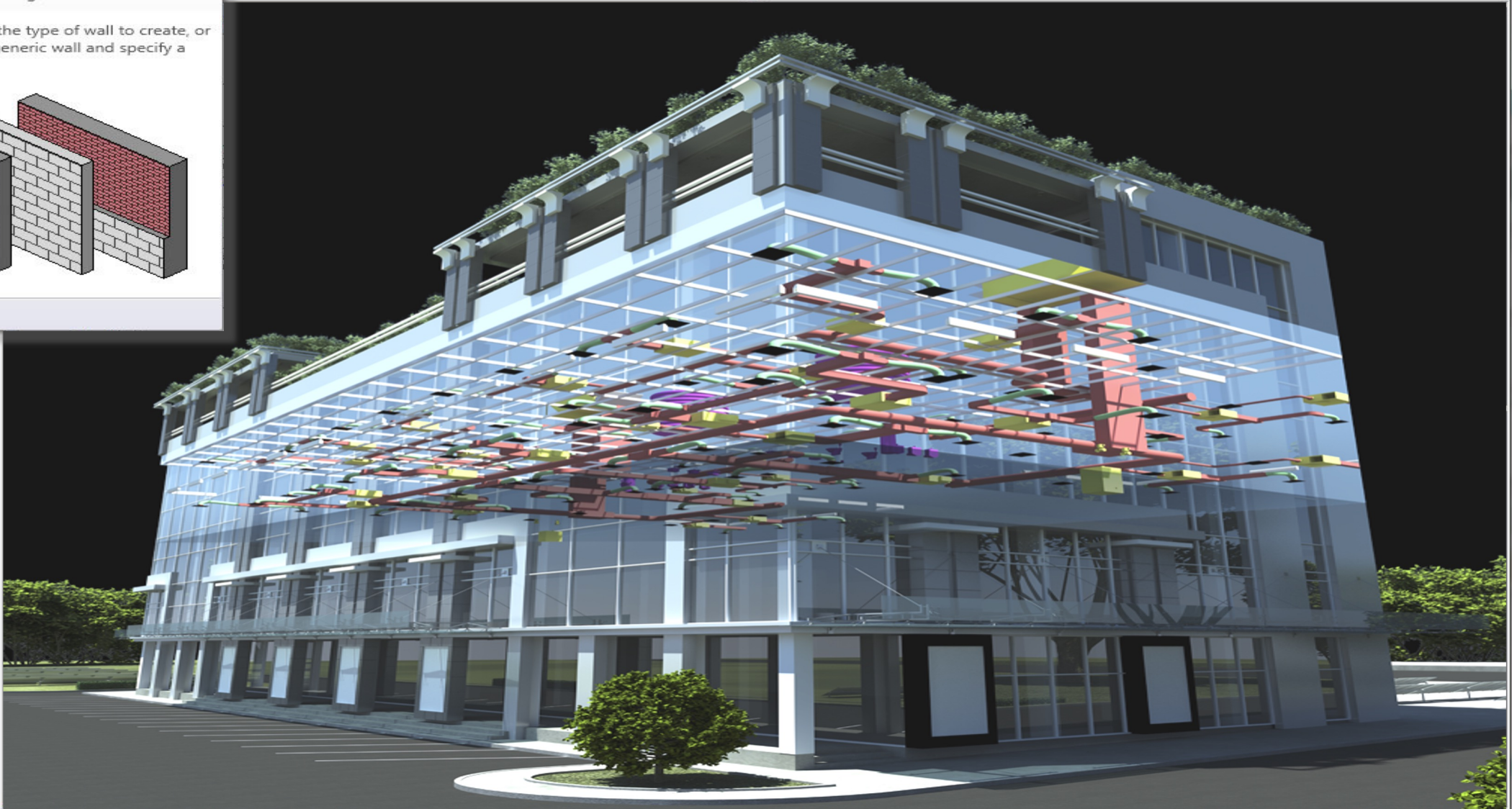
Wall (WA)
Creates a partition wall in the building model.

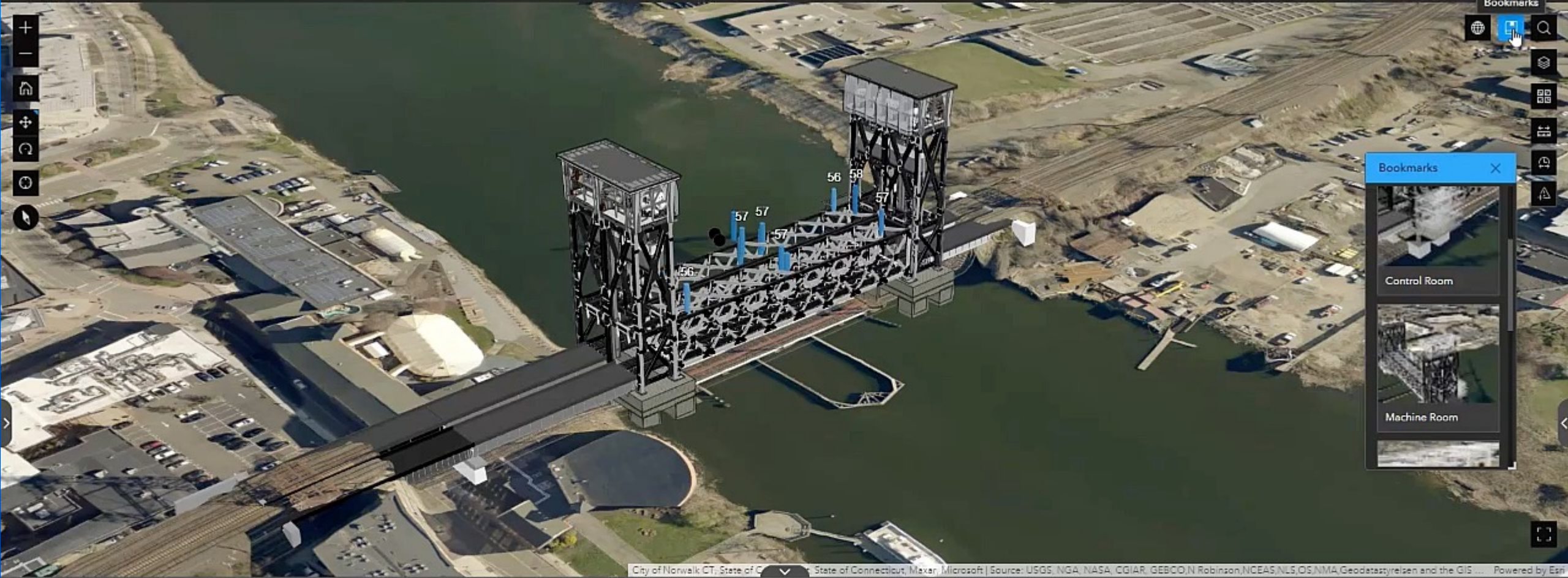
Use the Type Selector to specify the type of wall to create, or use the default type to create a generic wall and specify a different wall type later.



Press F1 for more help

- [-] Ceiling Plans
- [-] 3D Views
- [-] Elevations (Elevation 1)
 - [-] E-EAST
 - [-] E-NORTH
 - [-] E-SOUTH
 - [-] E-WEST
 - [-] I-KITCHEN
 - [-] I-KITCHEN NORTH
- [-] Sections (DETAIL SECTION)
- [-] Drafting Views (CALLOUT TYP.)
- [-] Legends
- [-] Schedules/Quantities
- [-] Sheets (all)
- [-] Families
- [-] Groups
- [-] Revit Links





Bookmarks

🌐 📄 🔍 🏠 🗺️ 📏 📐 📊 📑 📌 📍 📎 📏 📐 📊 📑 📌 📍 📎

Bookmarks

- Control Room
- Machine Room

City of Norwalk, CT, State of Connecticut, Maxar, Microsoft | Source: USGS, NGA, NASA, CGIAR, GEBCO, N Robinson, NCEAS, NLS, OS, NMA, Geodatasstyrelsen and the GIS... Powered by Esri

Link Explorer 🔗 Add Links

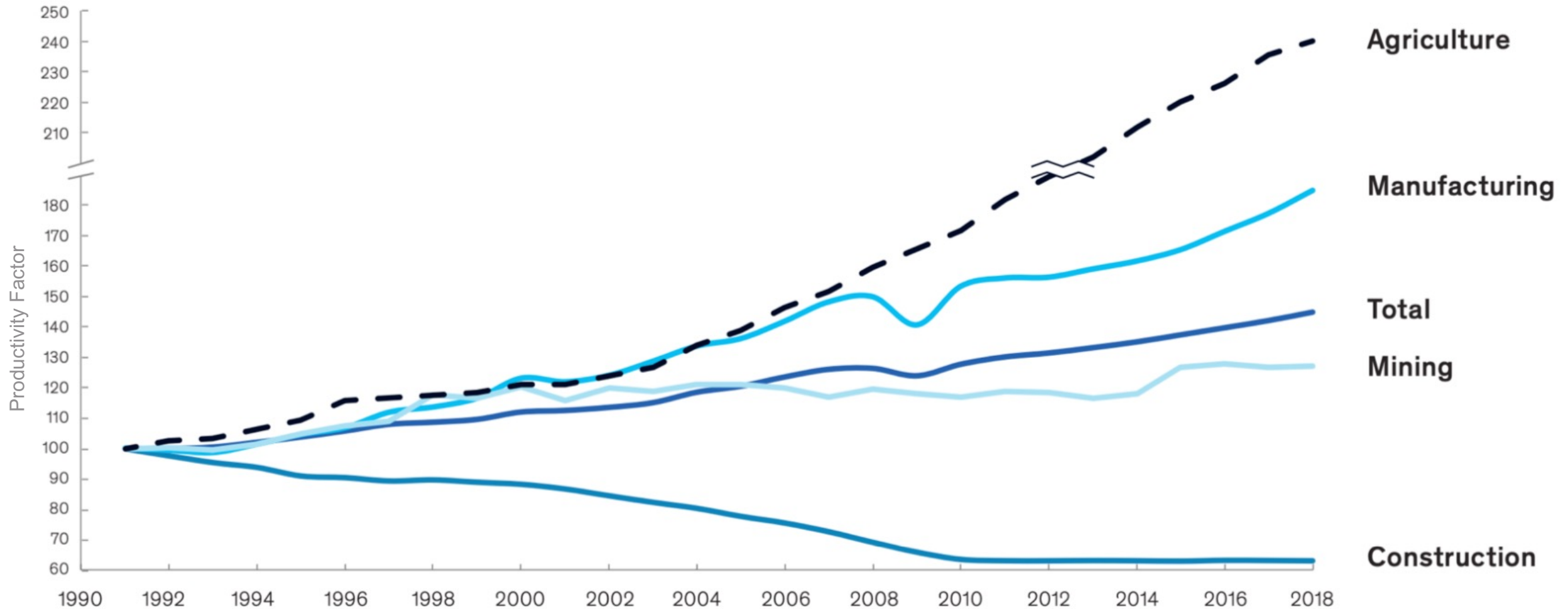
Name	Account	Project

Documents

🔍 Search

Display Name	Boundary	Spatial Reference	Outlier	Outlier Message	docO
WBR_Drive_Machinery_Cl...		2234			
WBR_Machinery Room-Ea...		PROJCS["NAD_1983_Stat...			{'x': 81
3D-MechRoom_East_Clea...		PROJCS["NAD_1983_Stat...			{'x': 81
3D_ControlHouse_Arch_C...		PROJCS["NAD_1983_Stat...			{'x': 81
3D-Bier2_Clean-ut		PROJCS["NAD_1983_Stat...			{'x': 81

The AEC Industry is unproductive



False impressions

Our industry is stuck in its ways



Adoption of technology in AEC

Users ramp up

88%

People already using tech on projects are increasing their use

Skeptics join in

91%

People who didn't previously use tech are beginning to use it

Call from above

85%

Management encourages the use of tech and persuades team members to adopt new tech

Why are things changing



Location matters!

Planning, designing, building
and operating in context!



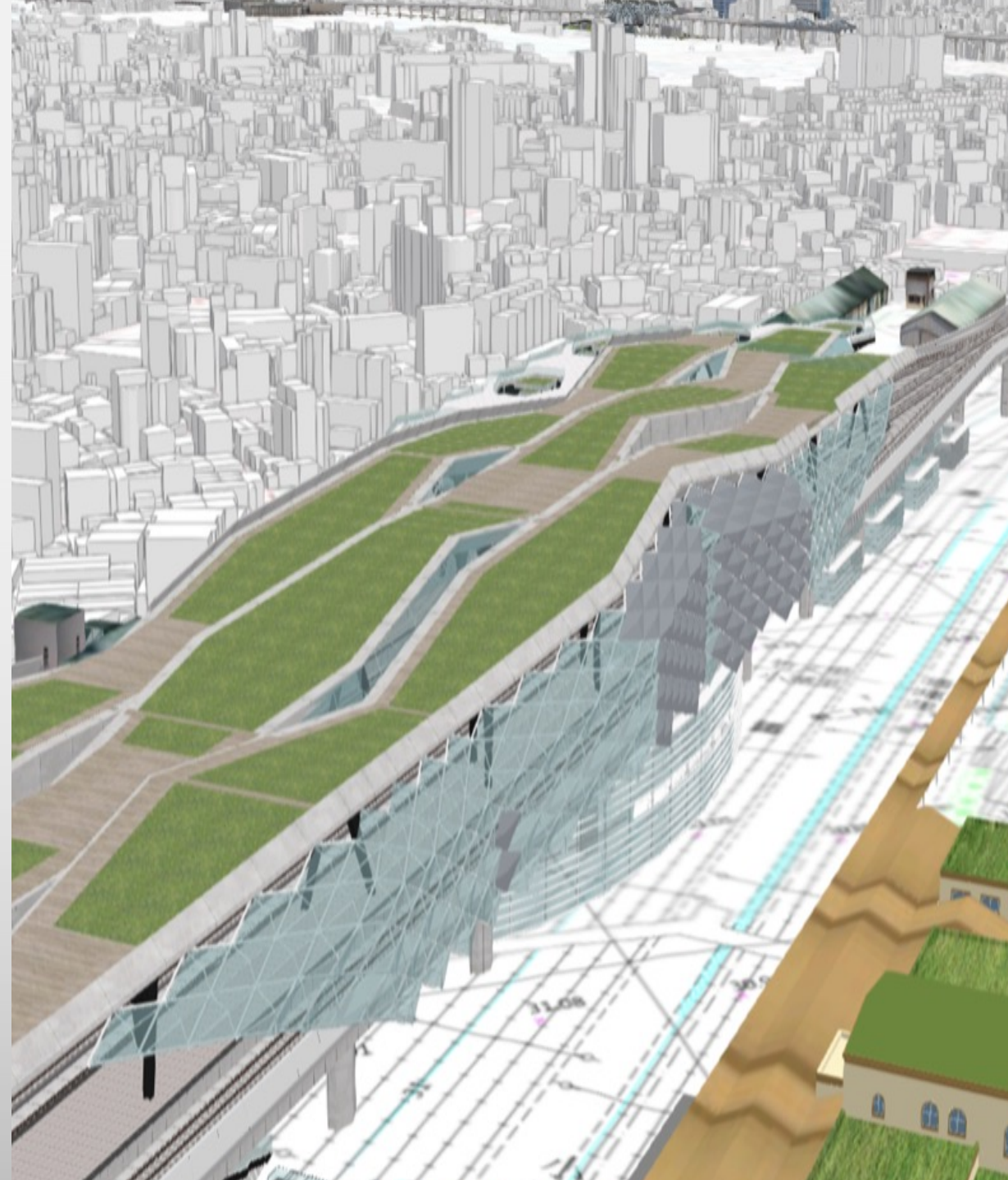
Location unites!

Integrates and connects varied
AEC data types & schemas



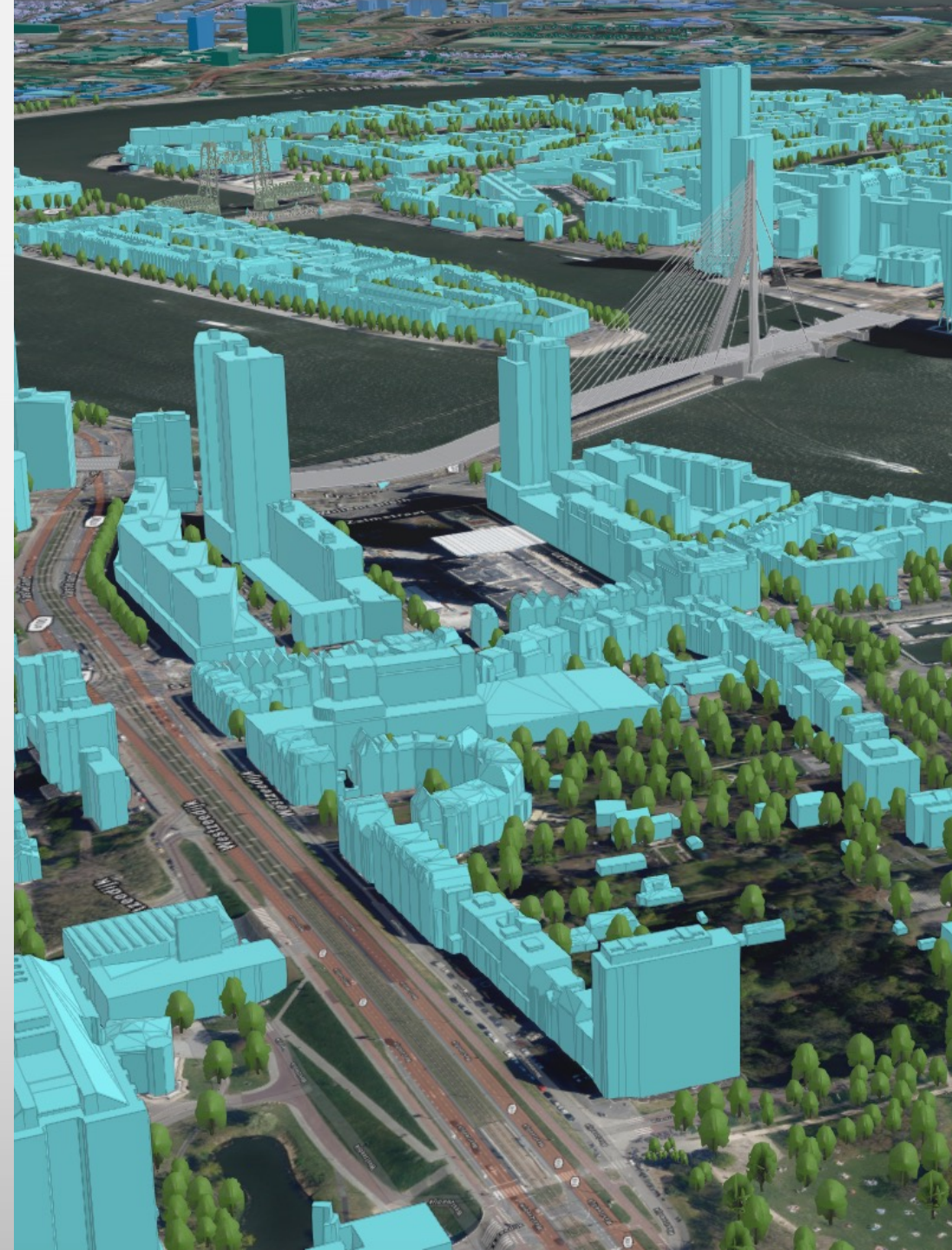
Location enables!

Digital transformation powered
by connected apps and data



Location based AEC!

Gone are the days of “tech shaming”
the industry’s low-tech approach



Working with industry standards

Governments use the OGC, Engineers use CAD & BIM. Developers use REST. A variety of format choices and services are available for any industry.

Connect, Transform & Automate

ArcGIS Data Interoperability accesses hundreds of nonnative datasets, spatial ETL tools geoprocess any data and service.

Removing data format barriers

Bring connected data sources to life by designing transformations, implementing logic, and moving data where it needs to be.



Open
Geospatial
Consortium.

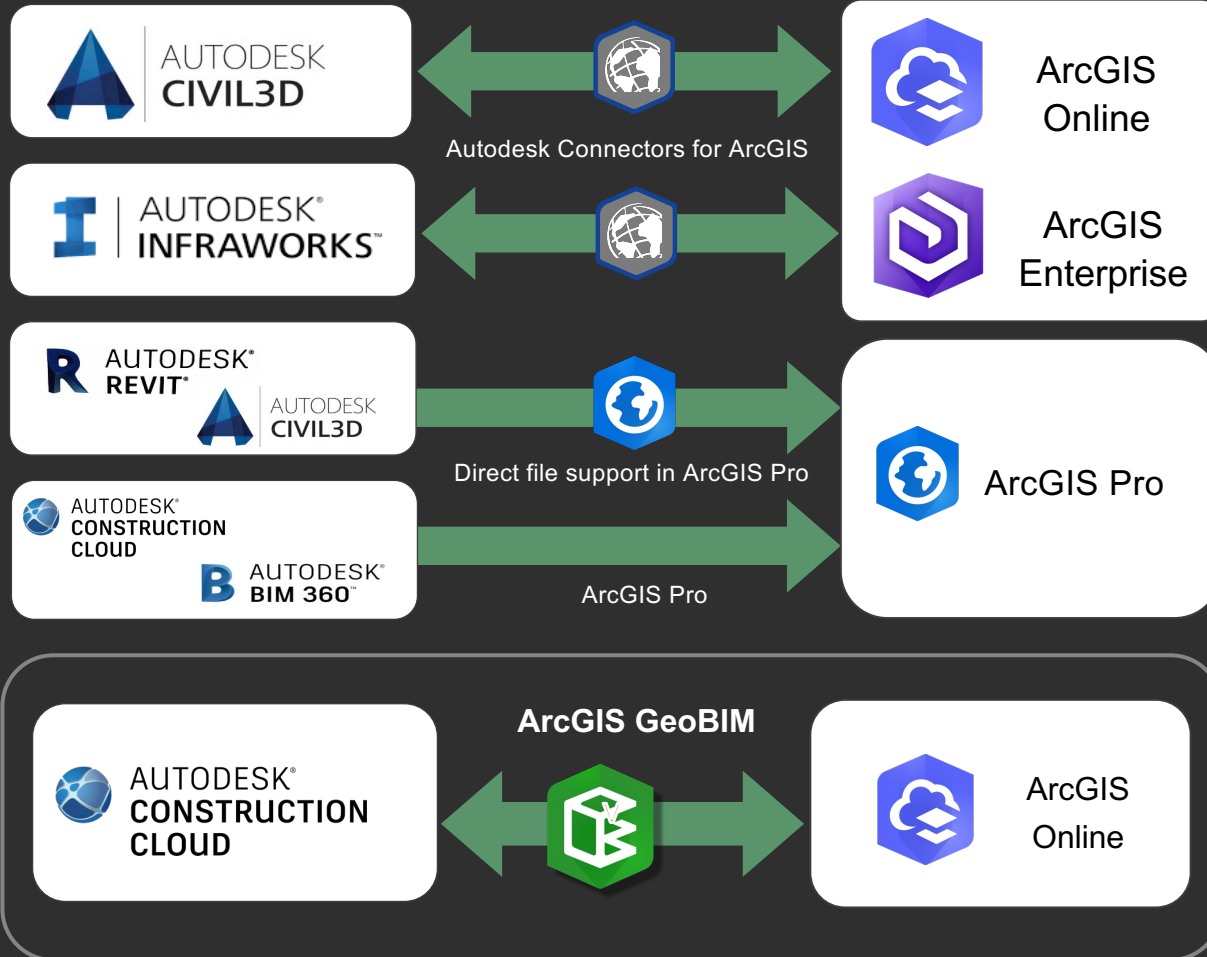


CityGML

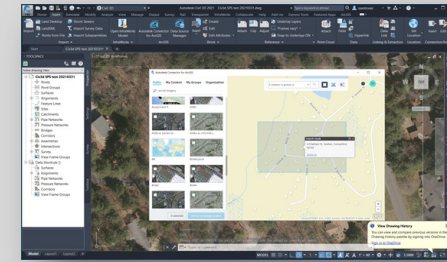


OVERTURE MAPS
FOUNDATION

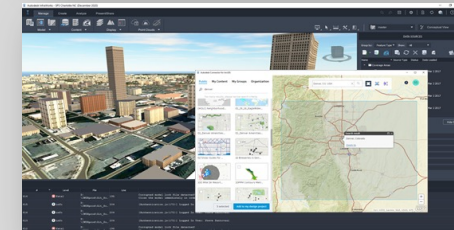
Connections and Integrations



Civil 3D
Connecting Civil 3D Desktop to ArcGIS



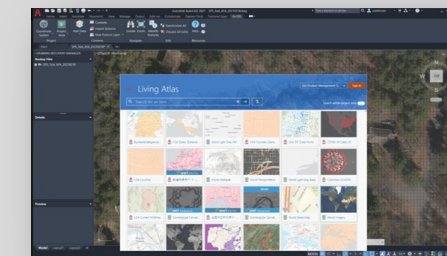
Infraworks
Connecting Infraworks Directly to ArcGIS content



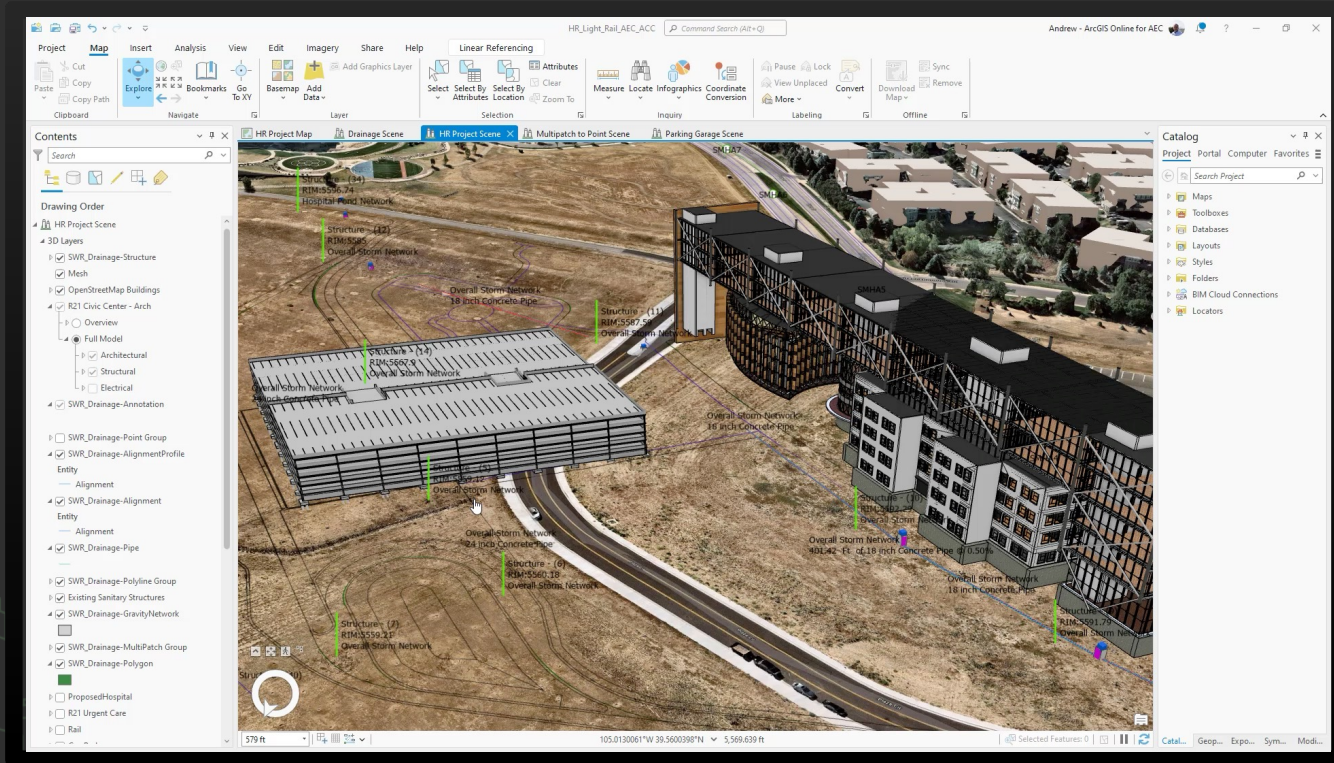
BIM Cloud Connection
ArcGIS Pro Direct Connection to BIM360 / ACC



ArcGIS for AutoCAD
Making the CAD designer a direct participant in GIS workflows



ArcGIS Pro



Integrate data from many sources

Combine data from various sources and formats. ArcGIS Pro supports industry and community standards to ensure inclusion of any dataset you have.

Visualize your data

Display data in 2D and 3D simultaneously. Manage multiple maps and layouts in a single project-based workflow.

Edit and analyze your data

Simplify data editing and analysis with context-sensitive tools. Perform interactive 2D and 3D analysis. Automate work with ModelBuilder or Python.

Share your work with the world

Publish maps and analysis results as web services or high-quality prints. Share maps and data on ArcGIS Online, ArcGIS Enterprise, or as a package.

ArcGIS GeoBIM



See projects in context

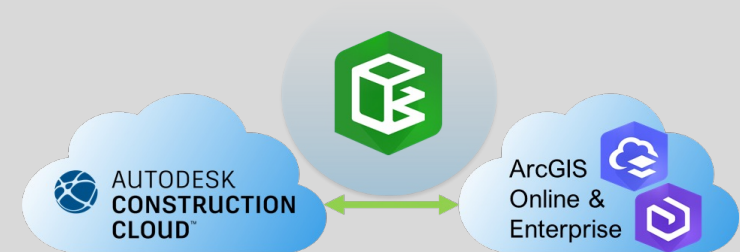
Simplify how teams view, manage, and access project data across multiple locations.

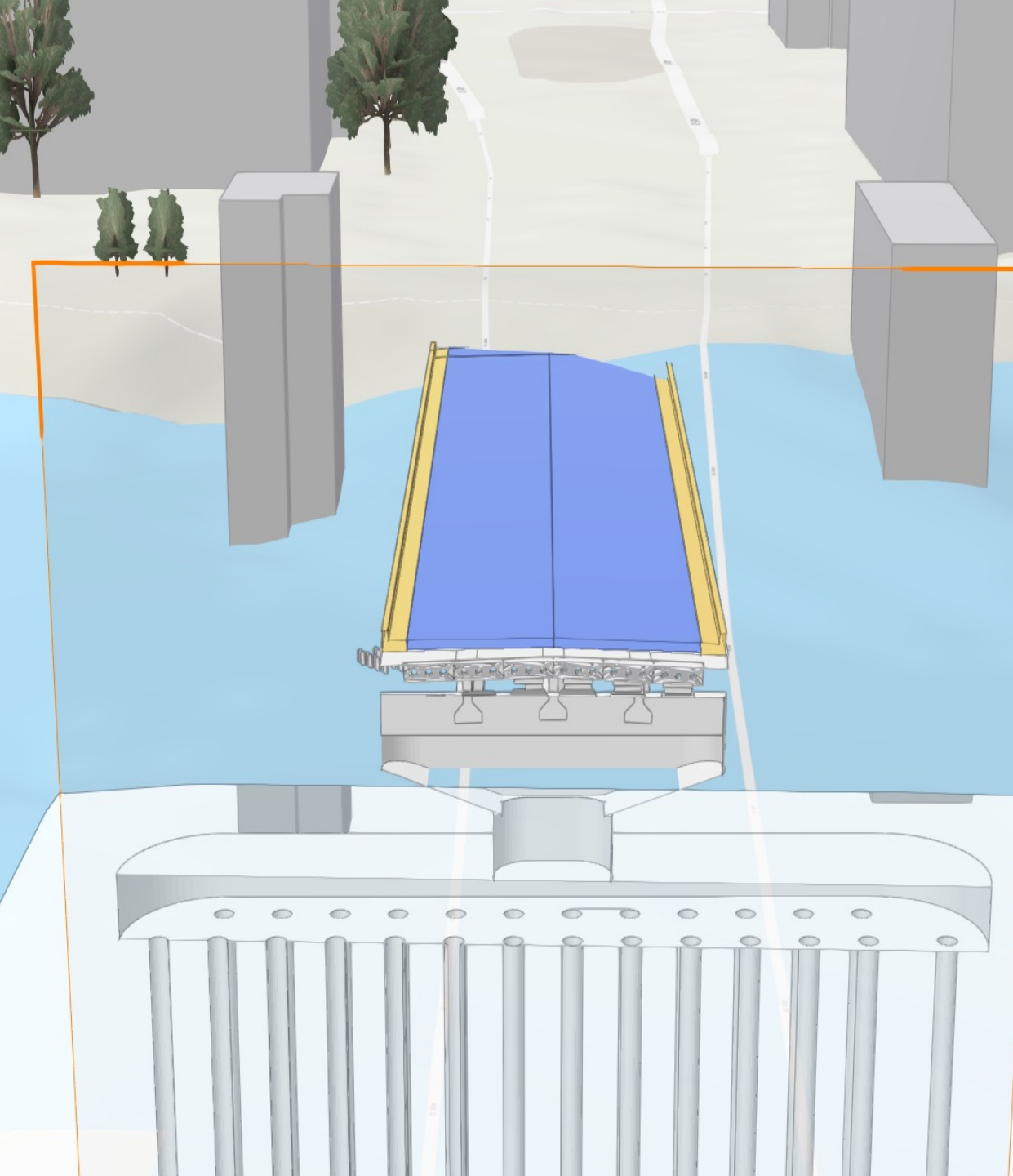
Keep projects organized

Access GIS, BIM, CAD and other project data in a single user experience.

Reduce costly model conversions

Keep your data federated and reduce conversions throughout the project life cycle.





GIS + openBIM

Reading IFC v4.3

 **AUTODESK**



 **esri** | THE SCIENCE OF WHERE®



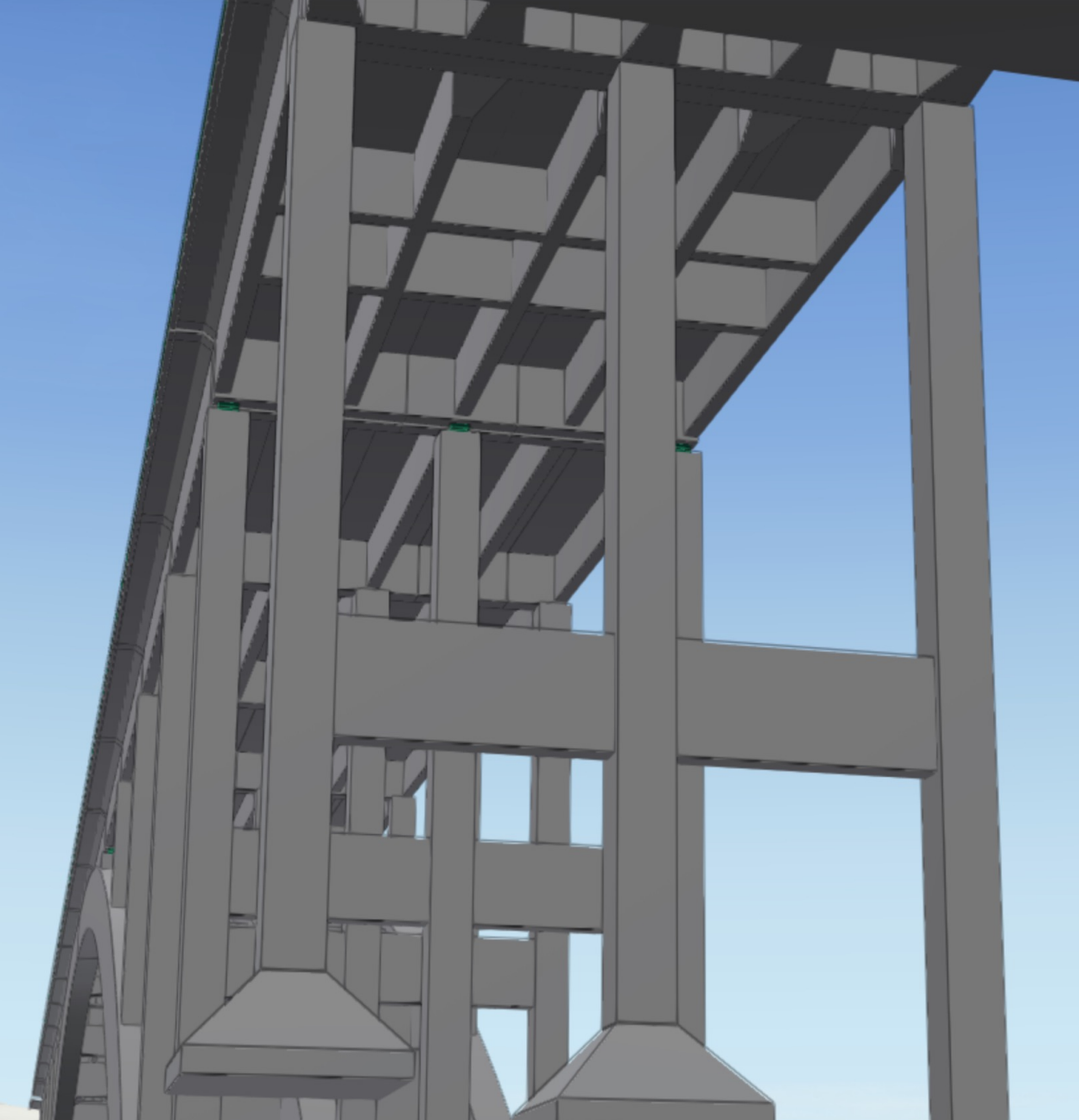
GIS + openBIM

Reading IFC v4.3



Bentley®

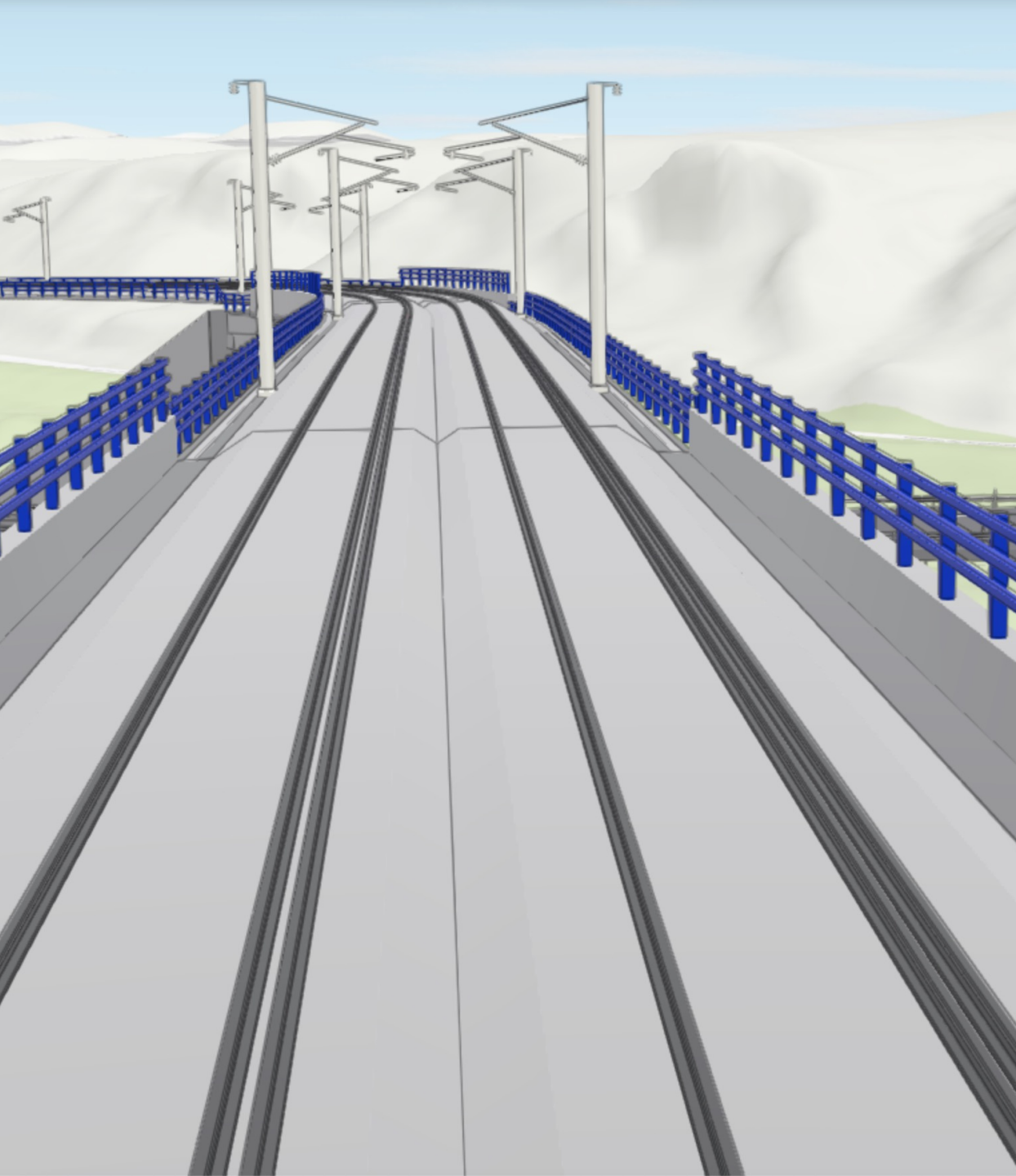




GIS + openBIM

Reading IFC v4.3





GIS + openBIM

Reading IFC v4.3



istram[®]





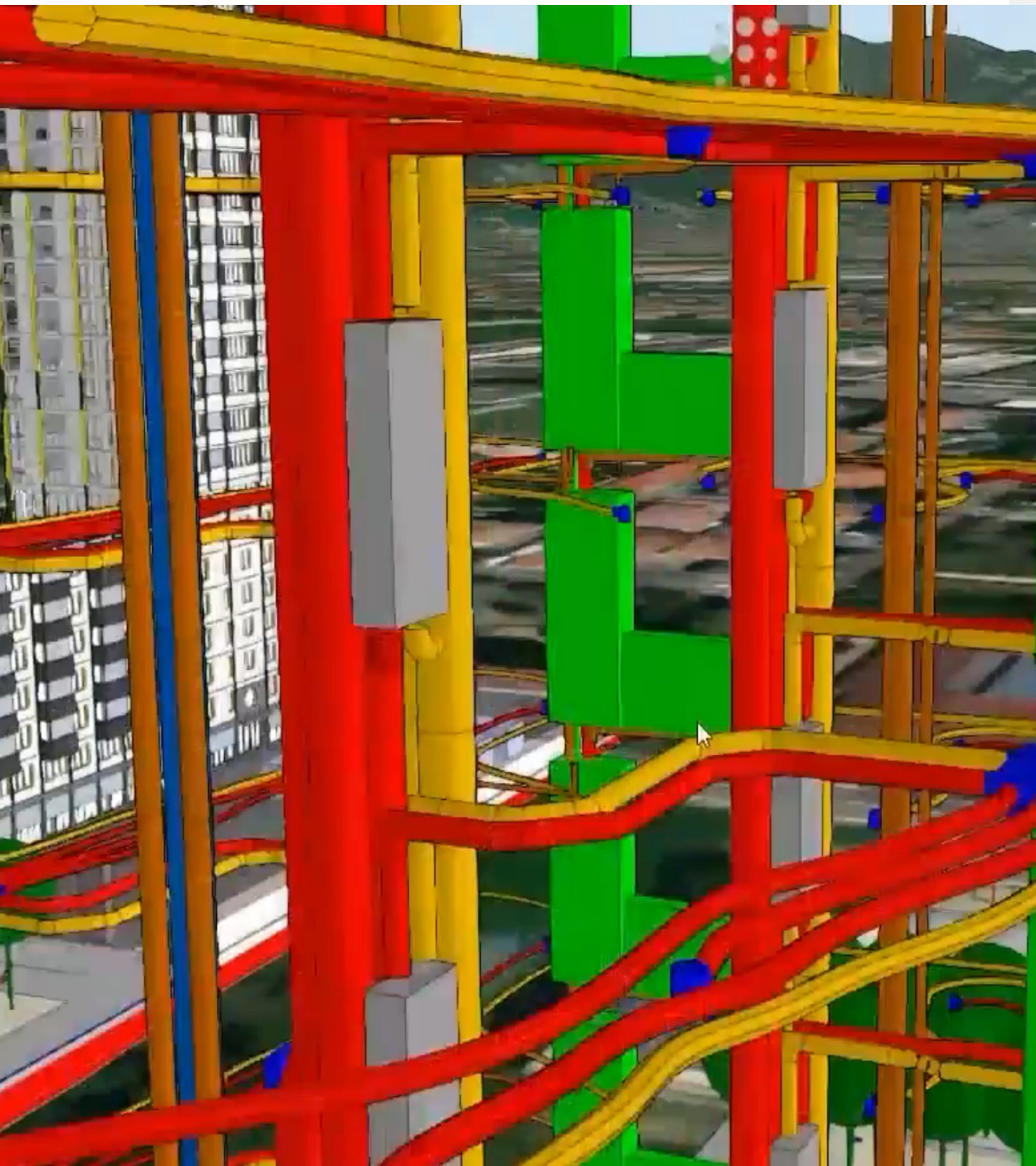
Black Cat

GIS + openBIM

Construction - Design management

SKANSKA





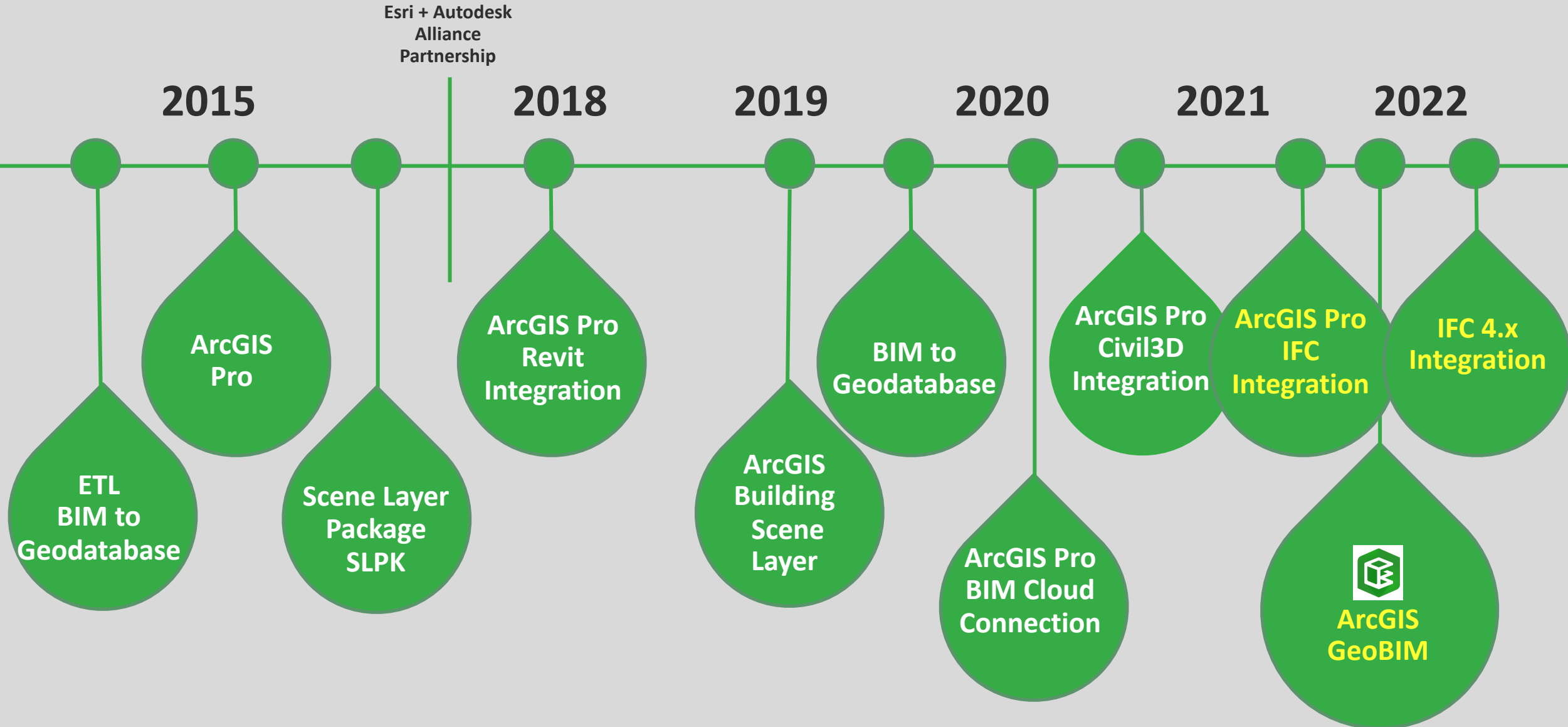
GIS + openBIM

Building solutions with Esri's APIs





BIM Integration in Esri ArcGIS





esri[®]

THE
SCIENCE
OF
WHERE[®]

www.esri.com/aec

aecinfo@esri.com

mgoldman@esri.com

