



BIM & GIS Convergence

Marek Suchocki

Head of Industry Associations Strategy



Safe Harbor Statement

The presentations during this event may contain forward-looking statements about our outlook, future results and related assumptions, total addressable markets, acquisitions, products and product capabilities, and strategies. These statements reflect our best judgment based on currently known factors. Actual events or results could differ materially. Please refer to our SEC filings, including our most recent Form 10-K and Form 10-Q filings available at www.sec.gov, for important risks and other factors that may cause our actual results to differ from those in our forward-looking statements.

The forward-looking statements made in these presentations are being made as of the time and date of their live presentation. If these presentations are reviewed after the time and date of their live presentation, even if subsequently made available by us, on our website or otherwise, these presentations may not contain current or accurate information. We disclaim any obligation to update or revise any forward-looking statements.

Statements regarding planned or future development efforts for our products and services are not intended to be a promise or guarantee of future availability of products, services, or features but merely reflect our current plans and based on factors currently known to us. Purchasing decisions should not be made based upon reliance on these statements.

PLEASE NOTE: All Autodesk content is proprietary. Please Do Not Copy, Post or Distribute without authorization.

BIM

Supplies detailed information about *built assets*.



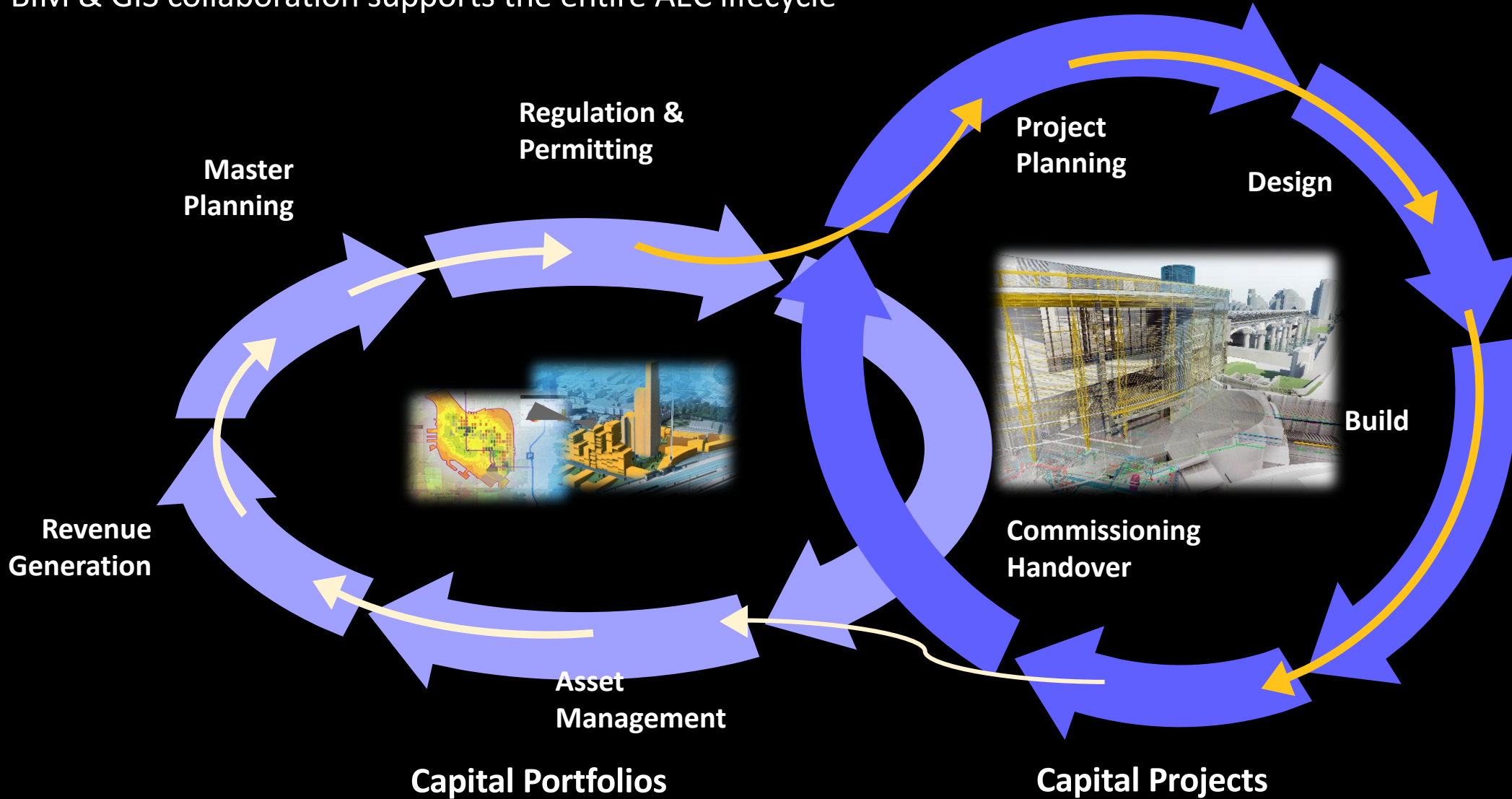
GIS

Provides information about assets in the context of the *built and natural environment*.



GIS Informs BIM – BIM Fuels GIS

BIM & GIS collaboration supports the entire AEC lifecycle



Industry Challenges | BIM+GIS



DISCONNECTED DATA & WORKFLOWS

- Siloed Data
- Project inefficiency
- Data uncertainty and currency

Impact

- High cost of lost & inaccurate data

LOCATION AWARENESS

- Lengthy approval process
- Sustainability and resiliency
- Permitting delays

Impact

- Community pride decreases

PROJECT COMPLEXITY

- Collaboration across teams
- Uninformed decision making
- Aging Infrastructure rehabilitation

Impact

- Project delays and poor decisions

Autodesk Customer Survey

237 Customers

Customers needing GIS
integration into BIM product

93%

GIS data is important to daily
work

83%

Current GIS integration is
easy

20%

Increasing Demand for BIM & GIS Interoperability

28%

Average Design Time Saved

90 Days

Average Construction Time Saved

13%

Average Project Cost Saved



Source: Geospatial World Consulting | Based on Project size >10KM in length or 100 Square Kilometers in Area



The background is a dark, almost black, abstract composition. It features several sharp, diagonal lines that appear to be metallic or reflective, with a bright, golden-yellow glow along their edges. These lines intersect to form a large, dark, irregular shape in the center, which serves as the backdrop for the text. The overall aesthetic is futuristic and high-tech.

We are not leveraging readily
available potential





Autodesk and the Autodesk logo are registered trademarks or trademarks of Autodesk, Inc., and/or its subsidiaries and/or affiliates in the USA and/or other countries. All other brand names, product names, or trademarks belong to their respective holders. Autodesk reserves the right to alter product and services offerings, and specifications and pricing at any time without notice, and is not responsible for typographical or graphical errors that may appear in this document.

© 2023 Autodesk. All rights reserved.