



2-5 May 2023, Rotterdam, The Netherlands

Constructing the Digital Bridge to Enable Metaverse in Construction



Asmaa Abouleish
BIM Manager at Egis Group

Are we ready to take a step and enter a shared digital world?



How does the concept of
metaverse differ from VR?

How does the concept of metaverse differ from VR?

VR is a technology that lets you enter and interact with a computer-made world like it's real.

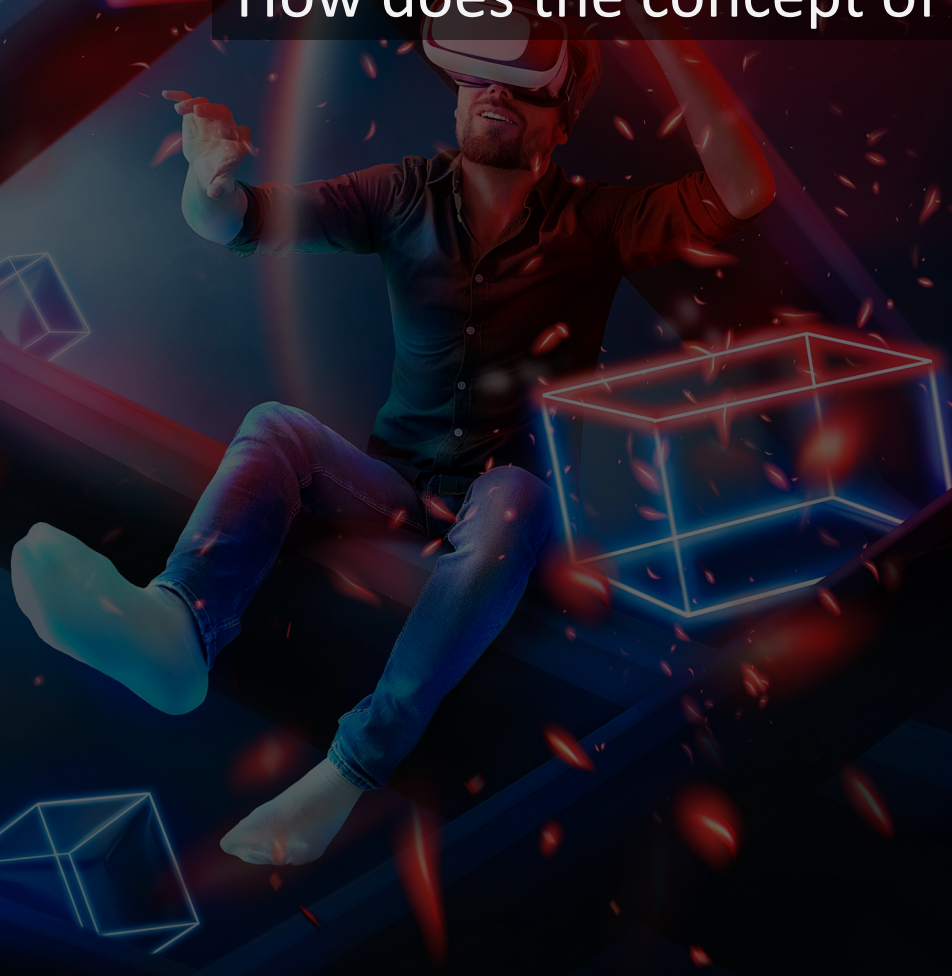


How does the concept of metaverse differ from VR?

The metaverse is a virtual **shared** space that allows for interaction & collaboration. It can be accessed by VR, AR or even from your laptop!



How does the concept of metaverse differ from VR?



Real time
Collaboration



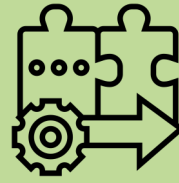
Metaverse Pillars for Construction



Immersive
Environments



Real-time
Collaboration



Tool
Integration



Cross
Platform

Metaverse Pillars for Construction



Immersive
Environments

3D Visualization

Realistic



Real-time
Collaboration

Text & share

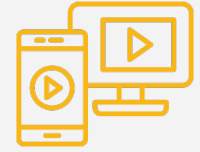
Voice & video



Tool
Integration

Data Import/Export

Seamless



Cross
Platform

Desktop/Mobile

AR/VR

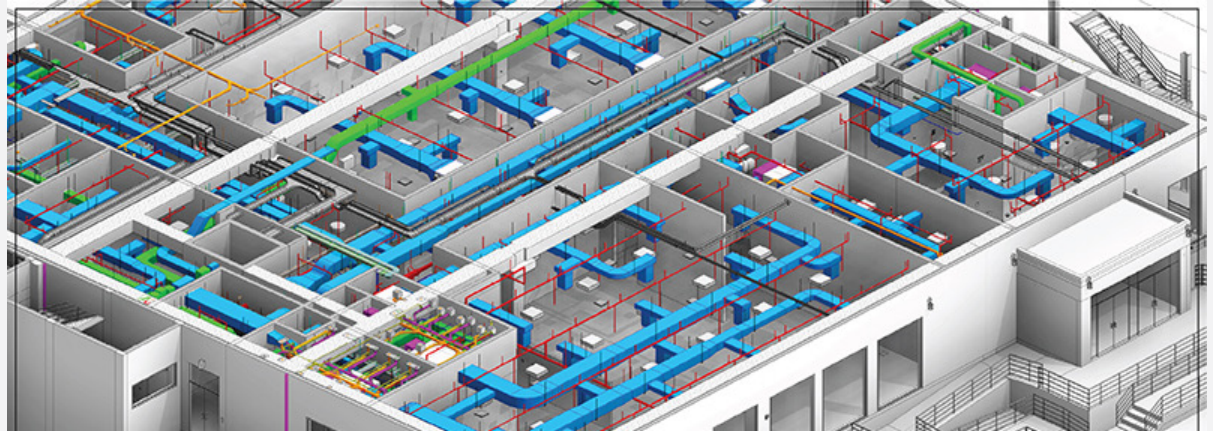
Metaverse Pillars for Construction



Immersive
Environments

3D Visualization

Realistic



In Immersion Level 1, we focus on 3D visualization, providing easy-to-understand representation of construction projects

Metaverse Pillars for Construction



Immersive
Environments

3D Visualization

Realistic



Here we elevate the experience with realistic visuals, offering an lifelike environment that enhances user interaction

Metaverse Pillars for Construction



Real-time
Collaboration

Text & share

Voice & video



We enable efficient communication through text chat and file sharing, allowing team members to exchange ideas and collaborate on documents in a straightforward and accessible manner

Metaverse Pillars for Construction



Real-time
Collaboration

Text & share

Voice & video



We enhance teamwork by incorporating voice and video communication, fostering a more interactive and immersive experience

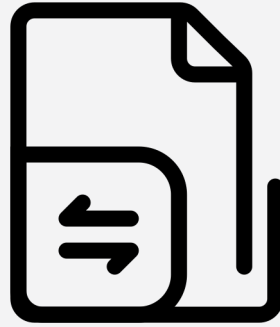
Metaverse Pillars for Construction



Tool
Integration

Data Import/Export

Seamless



we facilitate data import and export, ensuring compatibility with popular construction software and file formats, allowing for smoother exchange of information and streamlining the collaboration process across different platforms

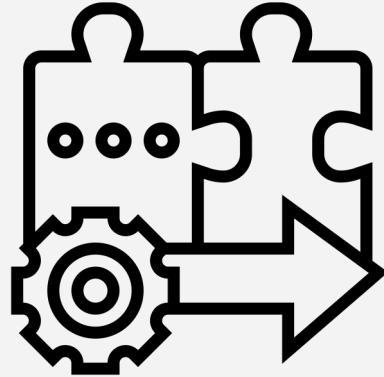
Metaverse Pillars for Construction



Tool
Integration

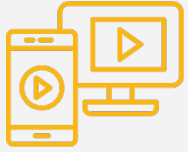
Data Import/Export

Seamless



We achieve seamless integration by enabling real-time data synchronization, shared libraries, and collaborative workflows, allowing teams to work efficiently and collaboratively within the metaverse

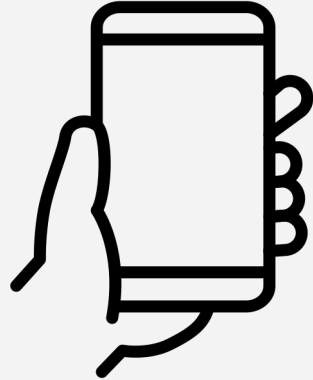
Metaverse Pillars for Construction



Cross
Platform

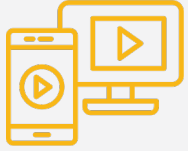
Desktop/Mobile

AR/VR



We emphasize mobile accessibility, enabling team members to engage with the construction metaverse using smartphones and tablets, providing flexibility and convenience for users who need **on-the-go access** to project information and collaboration tools.

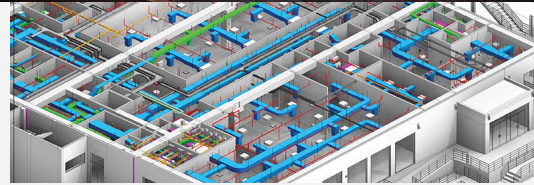
Metaverse Pillars for Construction



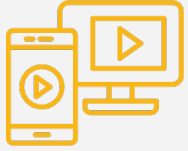
Cross
Platform

Desktop/Mobile

AR/VR



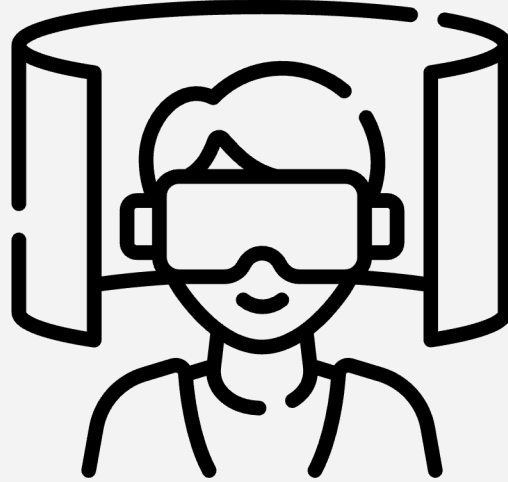
Metaverse Pillars for Construction



Cross
Platform

Desktop/Mobile

AR/VR



We integrate AR/VR support, offering immersive experiences and enhanced interaction within the construction metaverse, empowering users to visualize, navigate, and collaborate on projects in a more engaging and intuitive way through augmented and virtual reality technologies.

Metaverse Pillars for Construction



Immersive
Environments

3D Visualization

Realistic



Real-time
Collaboration

Text & share

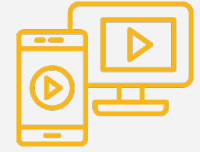
Voice & video



Tool
Integration

Data Import/Export

Seamless



Cross
Platform

Desktop/Mobile

AR/VR

Metaverse Pillars for Construction



Immersive Environments

3D Visualization

Realistic



Real-time
Collaboration

Text & share

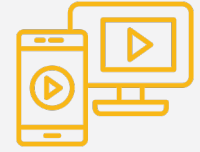
Voice & video



Tool
Interaction

Data In/Expo

Search/Ass



Cross
Platform

Desktop/Mobile

AR/VR



Metaverse for Construction + Technologies



Security



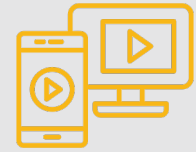
Immersive Environments



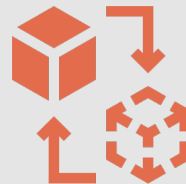
Real-time
Collaboration



Tool
Integration



Cross
Platform



Digital Twins

Metaverse for Construction + Technologies



Security

Blockchain is a secure, decentralized digital ledger of transactions.



Decentralization



Encryption

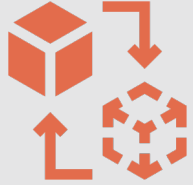


Immutability



Smart Contract

Metaverse for Construction + Technologies



Digital Twins

A virtual replica of a physical asset, process or system in Construction



Data Assets

- ★ Data Collection
- ★ ★ BIM & GIS
- ★ ★ ★ IoT



Data Science

- ★ BI Reporting
- ★ ★ Analytics
- ★ ★ ★ ML/AI

Metaverse for Construction + Technologies

AI Real-time multiple design options

AB

Revit architectural BIM model building for school

ChatGPT+AIPRM Chrome Extension for MidJourney



Prompt 1:

/imagine prompt: Futuristic school with a solar-powered roof, surrounded by lush greenery, students playing on the playground, large windows allowing natural light to flood the interior, Photorealistic, DSLR camera with a 24-70mm lens, --ar 16:9 --v 5

Prompt 2:

/imagine prompt: High-tech school building with energy-efficient design, vertical gardens and rooftop greenhouse, students and teachers interacting in a collaborative learning space, Serene, watercolor painting on paper, --ar 1:1 --niji

Prompt 3:

/imagine prompt: Reimagined school building with an open-concept design, outdoor classrooms, and tree-filled courtyards, sunset casting warm golden light over the scene, Tranquil, digital illustration, --ar 9:16 --v 5

Prompt 4:

/imagine prompt: Adaptive reuse of an industrial building, transformed into a sustainable school with solar panels and green walls, bustling urban environment, Energetic, linocut printmaking, --ar 16:9 --v 5

Metaverse for Construction + Technologies

AI Real-time multiple design options

AB

Revit architectural BIM model building for school

ChatGPT+AIPRM Chrome Extension for MidJourney



Prompt 1:

/imagine prompt: **Futuristic school with a solar-powered roof**, surrounded by lush greenery, students playing on the playground, large windows allowing natural light to flood the interior, Photorealistic, DSLR camera with a 24-70mm lens, --ar 16:9 --v 5

Prompt 2:

/imagine prompt: **High-tech school building with energy-efficient design**, vertical gardens and rooftop greenhouse, students and teachers interacting in a collaborative learning space, Serene, watercolor painting on paper, --ar 1:1 --niji

Prompt 3:

Metaverse for Construction + Technologies

AI Real-time multiple design options

Prompt 3:

/imagine prompt: Reimagined school building with an open-concept design, outdoor classrooms, and tree-filled courtyards, sunset casting warm golden light over the scene, Tranquil, digital illustration, --ar 9:16 --v 5

Prompt 4:

/imagine prompt: Adaptive reuse of an industrial building, transformed into a sustainable school with solar panels and green walls, bustling urban environment, Energetic, linocut printmaking, --ar 16:9 --v 5

Metaverse for Construction + Technologies

AI Real-time multiple design options

Revit architectural BIM model building for school



Prompt 1:

/imagine prompt: Futuristic school with a solar-powered roof, surrounded by lush greenery, students playing on the playground, large windows allowing natural light to flood the interior, Photorealistic, DSLR camera with a 24-70mm lens, --ar 16:9 --v 5

Prompt 2:

/imagine prompt: High-tech school building with energy-efficient design, vertical gardens and rooftop greenhouse, students and teachers interacting in a collaborative learning space, Serene, watercolor painting on paper, --ar 1:1 --niji

Prompt 3:

/imagine prompt: Reimagined school building with an open-concept design, outdoor classrooms, and tree-filled courtyards, sunset casting warm golden light over the scene, Tranquil, digital illustration, --ar 9:16 --v 5

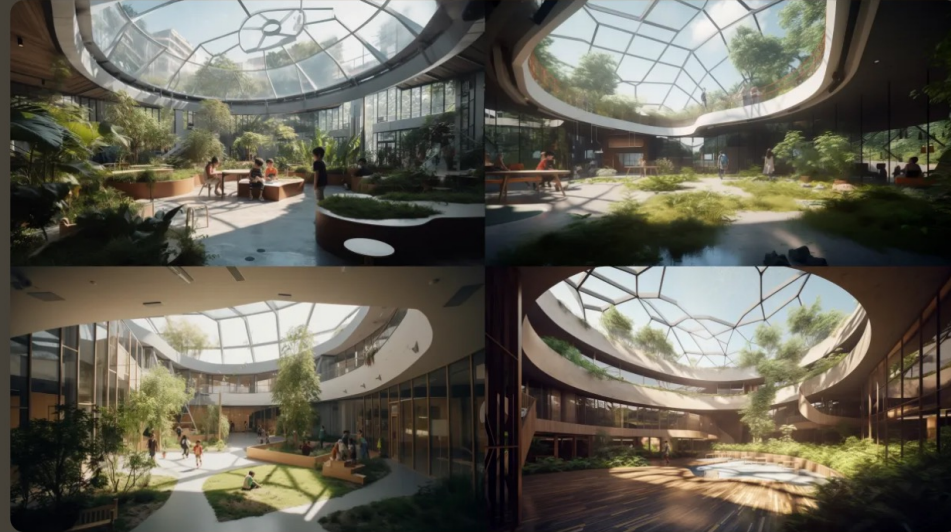
Prompt 4:

/imagine prompt: Adaptive reuse of an industrial building, transformed into a sustainable school with solar panels and green walls, bustling urban environment, Energetic, linocut printmaking, --ar 16:9 --v 5



Midjourney Bot Today at 6:43 PM

Futuristic school with a solar-powered roof, surrounded by lush greenery, students playing on the playground, large windows allowing natural light to flood the interior, Photorealistic, DSLR camera with a 24-70mm lens, --ar 16:9 --v 5 - [@AsmaaAbouleish](#) (Open on website for full quality) (fast)



U1

U2

U3

U4



V1

V2

V3

V4

Metaverse for Construction + Technologies

AI Real-time multiple design options

Revit architectural BIM model building for school



Prompt 1:

/imagine prompt: Futuristic school with a solar-powered roof, surrounded by lush greenery, students playing on the playground, large windows allowing natural light to flood the interior, Photorealistic, DSLR camera with a 24-70mm lens, --ar 16:9 --v 5

Prompt 2:

/imagine prompt: High-tech school building with energy-efficient design, vertical gardens and rooftop greenhouse, students and teachers interacting in a collaborative learning space, Serene, watercolor painting on paper, --ar 1:1 --niji

Prompt 3:

/imagine prompt: Reimagined school building with an open-concept design, outdoor classrooms, and tree-filled courtyards, sunset casting warm golden light over the scene, Tranquil, digital illustration, --ar 9:16 --v 5

Prompt 4:

/imagine prompt: Adaptive reuse of an industrial building, transformed into a sustainable school with solar panels and green walls, bustling urban environment, Energetic, linocut printmaking, --ar 16:9 --v 5



Metaverse for Construction + Technologies

AI Real-time multiple design options

High-tech school building with energy-efficient design, vertical gardens and rooftop greenhouse, students and teachers interacting in a collaborative learning space, Photorealistic, DSLR camera with a 24-70mm lens, --ar 16:9 --v 5 - @AsmaaAbouleish (Open on website for full quality) (fast)



Revit architectural BIM model building for school

Prompt 1:
/imagine prompt: Futuristic school with a solar-powered roof, surrounded by lush greenery, students playing on the playground, large windows allowing natural light to flood the interior, Photorealistic, DSLR camera with a 24-70mm lens, --ar 16:9 --v 5

Prompt 2:
/imagine prompt: High-tech school building with energy-efficient design, vertical gardens and rooftop greenhouse, students and teachers interacting in a collaborative learning space, Serene, watercolor painting on paper, --ar 1:1 --niji

Prompt 3:
/imagine prompt: Reimagined school building with an open-concept design, outdoor classrooms, and tree-filled courtyards, sunset casting warm golden light over the scene, Tranquil, digital illustration, --ar 9:16 --v 5

Prompt 4:
/imagine prompt: Adaptive reuse of an industrial building, transformed into a sustainable school with solar panels and green walls, bustling urban environment, Energetic, linocut printmaking, --ar 16:9 --v 5

Metaverse for Construction + Technologies

AI Real-time multiple design options

Revit architectural BIM model building for school



Prompt 1:

/imagine prompt: Futuristic school with a solar-powered roof, surrounded by lush greenery, students playing on the playground, large windows allowing natural light to flood the interior, Photorealistic, DSLR camera with a 24-70mm lens, --ar 16:9 --v 5

Prompt 2:

/imagine prompt: High-tech school building with energy-efficient design, vertical gardens and rooftop greenhouse, students and teachers interacting in a collaborative learning space, Serene, watercolor painting on paper, --ar 1:1 --niji

Prompt 3:

/imagine prompt: Reimagined school building with an open-concept design, outdoor classrooms, and tree-filled courtyards, sunset casting warm golden light over the scene, Tranquil, digital illustration, --ar 9:16 --v 5

Prompt 4:

/imagine prompt: Adaptive reuse of an industrial building, transformed into a sustainable school with solar panels and green walls, bustling urban environment, Energetic, linocut printmaking, --ar 16:9 --v 5



Metaverse for Construction + Technologies

AI Real-time multiple design options

Adaptive reuse of an industrial building, transformed into a sustainable school with solar panels and green walls, bustling urban environment, Energetic, linocut printmaking, --ar 16:9 --v 5 - [@AsmaaAbouleish](#) (Open on website for full quality) (fast)

Revit architectural BIM model building for school



Prompt 1:

/imagine prompt: Futuristic school with a solar-powered roof, surrounded by lush greenery, students playing on the playground, large windows allowing natural light to flood the interior, Photorealistic, DSLR camera with a 24-70mm lens, --ar 16:9 --v 5

Prompt 2:

/imagine prompt: High-tech school building with energy-efficient design, vertical gardens and rooftop greenhouse, students and teachers interacting in a collaborative learning space, Serene, watercolor painting on paper, --ar 1:1 --niji

Prompt 3:

/imagine prompt: Reimagined school building with an open-concept design, outdoor classrooms, and tree-filled courtyards, sunset casting warm golden light over the scene, Tranquil, digital illustration, --ar 9:16 --v 5

Prompt 4:

/imagine prompt: Adaptive reuse of an industrial building, transformed into a sustainable school with solar panels and green walls, bustling urban environment, Energetic, linocut printmaking, --ar 16:9 --v 5



Metaverse for Construction + Technologies

AI Real-time multiple design options

Revit architectural BIM model building for school

Prompt 1:
/imagine prompt: Futuristic school with a solar-powered roof, surrounded by lush greenery, students playing on the playground, large windows allowing natural light to flood the interior. Photorealistic, DSLR camera with a 24-70mm lens, --ar 16:9 --v 5

Prompt 2:
/imagine prompt: High-tech school building with energy-efficient design, vertical gardens and rooftop greenhouse, students and teachers interacting in a collaborative learning space. Serene, watercolor painting on paper, --ar 11--niji

Prompt 3:
/imagine prompt: Reimagined school building with an open-concept design, outdoor classrooms, and tree-filled courtyards, sunset casting warm golden light over the scene. Tranquil, digital illustration, --ar 9:16 --v 5

Prompt 4:
/imagine prompt: Adaptive reuse of an industrial building, transformed into a sustainable school with solar panels and green walls, bustling urban environment. Energetic, linocut printmaking, --ar 16:9 --v 5

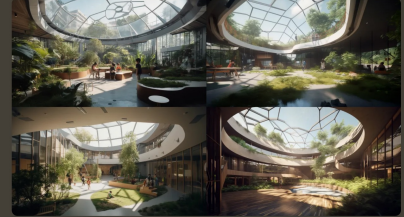
Adaptive reuse of an industrial building, transformed into a sustainable school with solar panels and green walls, bustling urban environment, Energetic, linocut printmaking, --ar 16:9 --v 5 - @AsmaaAbouleish (Open on website for full quality) (fast)



High-tech school building with energy-efficient design, vertical gardens and rooftop greenhouse, students and teachers interacting in a collaborative learning space, Photorealistic, DSLR camera with a 24-70mm lens, --ar 16:9 --v 5 - @AsmaaAbouleish (Open on website for full quality) (fast)



Midjourney Bot Today at 6:43 PM
Futuristic school with a solar-powered roof, surrounded by lush greenery, students playing on the playground, large windows allowing natural light to flood the interior, Photorealistic, DSLR camera with a 24-70mm lens, --ar 16:9 --v 5 - @AsmaaAbouleish (Open on website for full quality) (fast)



U1	U2	U3	U4	🔄
V1	V2	V3	V4	

This is the current 2D situation. Imagine the same but real-time in the immersive metaverse environment!!!!!!

Metaverse for Construction + Technologies

AI Real-time Query



Abdulrahman Aarabi (Abed) • 1st

Project Management | Constructions | BIM | Digital Transform...

1d • 🌐

The screenshot shows a web application interface for 'ARTELIA' in a 'TESTING ENV'. The interface includes a sidebar with 'DASHBOARD', 'DATA HUB', 'COST', and 'PROJECTS'. The main content area features a 3D model of a building and a data table. A chat window is open on the left with the message 'Hello, I'm ChatGPT! Ask me anything!' and a text input field.

Category	Total cost price	kgCO2e	Hours	Type	Unit	Quan
Origin indicator_Triangle_SITE_MOE(1)	0,00 kr./m²	0,00 kgCO ₂ -eq/m ² /year	0,00 total hours			
Basic Wall(4)	463,47 kr./m²	0,47 kgCO ₂ -eq/m ² /year	313,76 total hours			
Floor(1)	264,28 kr./m²	0,39 kgCO ₂ -eq/m ² /year	27,20 total hours			
Udvendig ét fags vindue med fast karm_WI_MOE(3)	23,55 kr./m²	0,67 kgCO ₂ -eq/m ² /year	18,00 total hours			
Indvendig enkelt glas dør_DO_MOE(1)	0,00 kr./m²	0,00 kgCO ₂ -eq/m ² /year	0,00 total hours			
Basic Ceiling(1)	0,00 kr./m²	0,00 kgCO ₂ -eq/m ² /year	0,00 total hours			
Basic Roof(1)	447,64 kr./m²	0,65 kgCO ₂ -eq/m ² /year	71,41 total hours			



Constructing the Digital Bridge to Enable Metaverse in Construction



Security



Decentralization



Encryption



Immutability



Smart Contract



Pillars



Immersive
Environments



Real-time
Collaboration



Tool
Integration



Cross
Platform



Digital Twins



Data Assets

- ★ Data Collection
- ★★ BIM & GIS
- ★★★ IoT



Data Science

- ★ BI Reporting
- ★★ Analytics
- ★★★ ML/AI

Constructing the Digital Bridge to Enable Metaverse in Construction



Security



Decentralization



Encryption



Interoperability



Smart Contract



Pillars



Immersive Environments

Real-time Collaboration

Tool Integration



Cross Platform



Digital Twins



Data Assets

★ Data Collection

★★ BIM & GIS

★★★ IoT



Data Science

★ BI Reporting

★★ Analytics

★★★ ML/AI

Constructing the Digital Bridge to Enable Metaverse in Construction



Asmaa Abouleish

BIM Manager at Egis | AI/ML | Digital Transformation |
Strategic Thinking | PMP® | ACP | BRE ISO 19650 | K...



THANK YOU