

The background of the slide is a collage of industrial machinery. On the left, there is a vertical strip of a complex piping system with various valves and components. The main part of the background is a large, diagonal image of a large, polished metal pipe with two hexagonal nuts. One nut has "8.8" and "NBY" stamped on it. Below this, there are blue-painted pipes and machinery components. The overall scene is brightly lit, suggesting an industrial or construction environment.

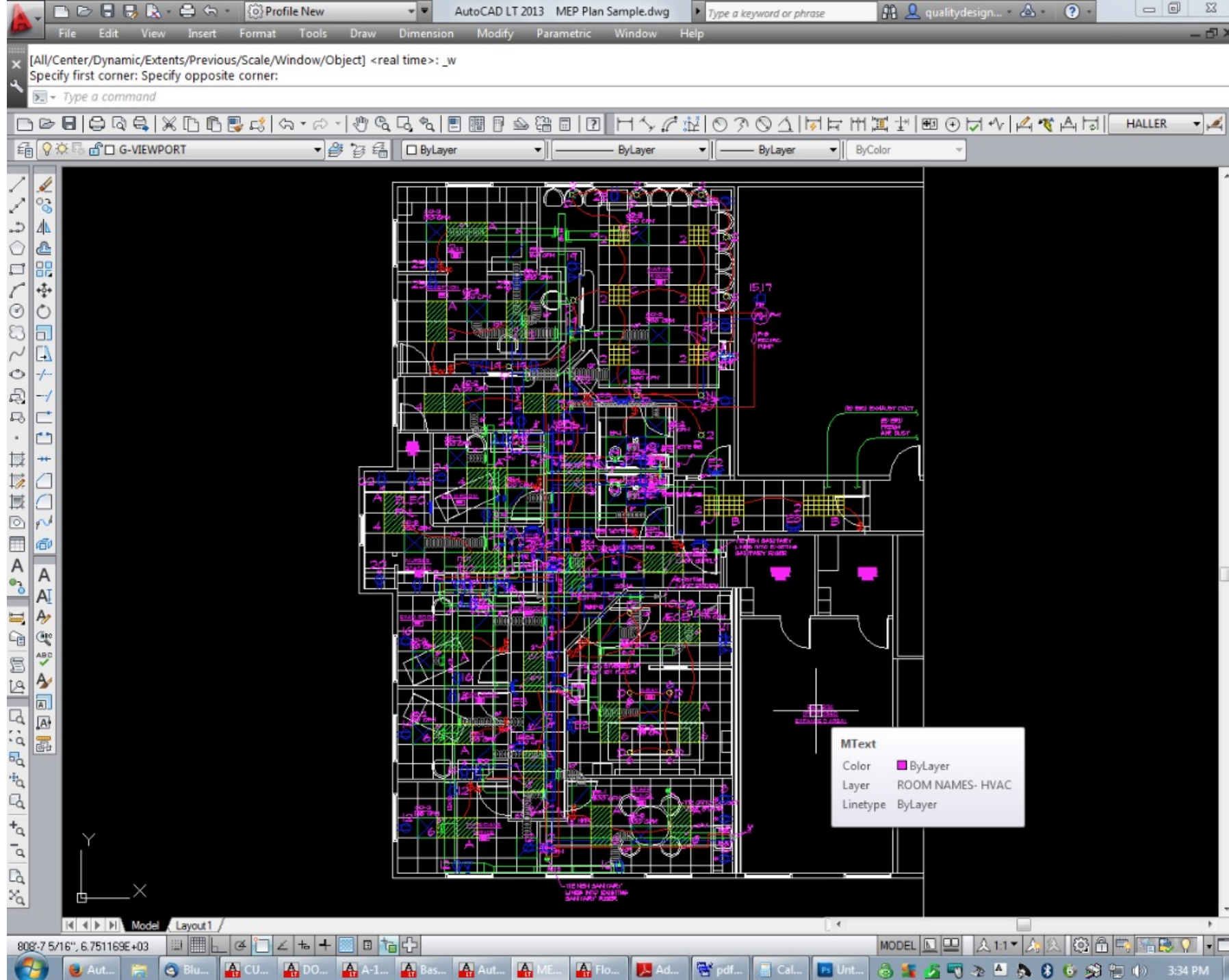
Bringing Sustainability into Building and Infrastructure Design, Construction & Operation

4th May 2023

Gary Cowan
Head of Digital Construction
Kane Group









kane

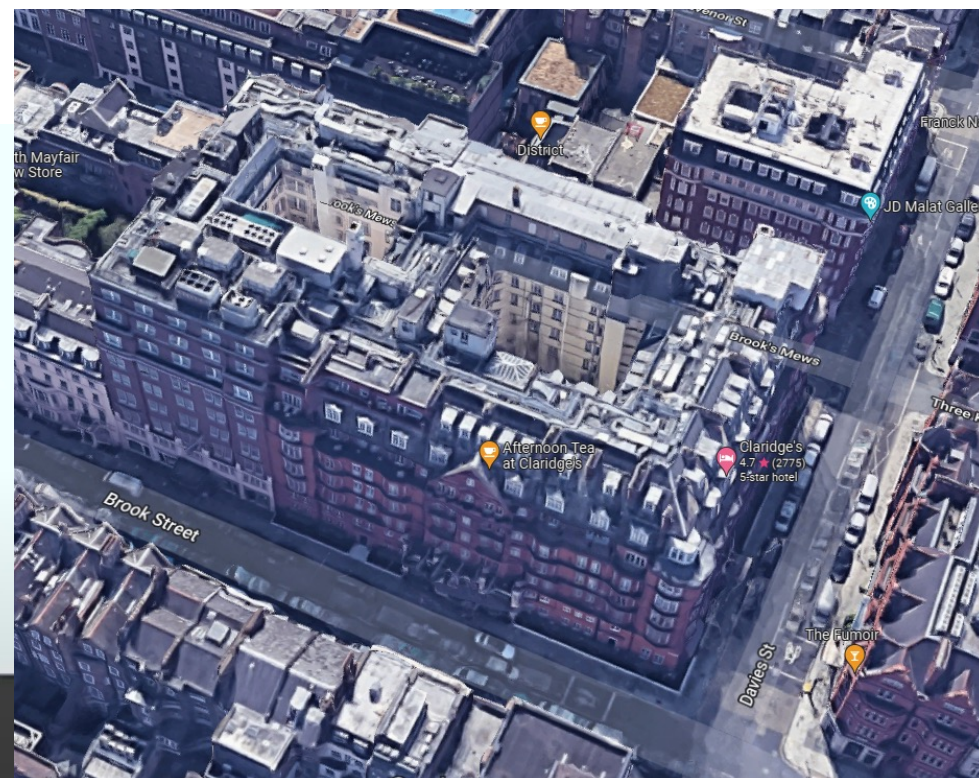


The Project

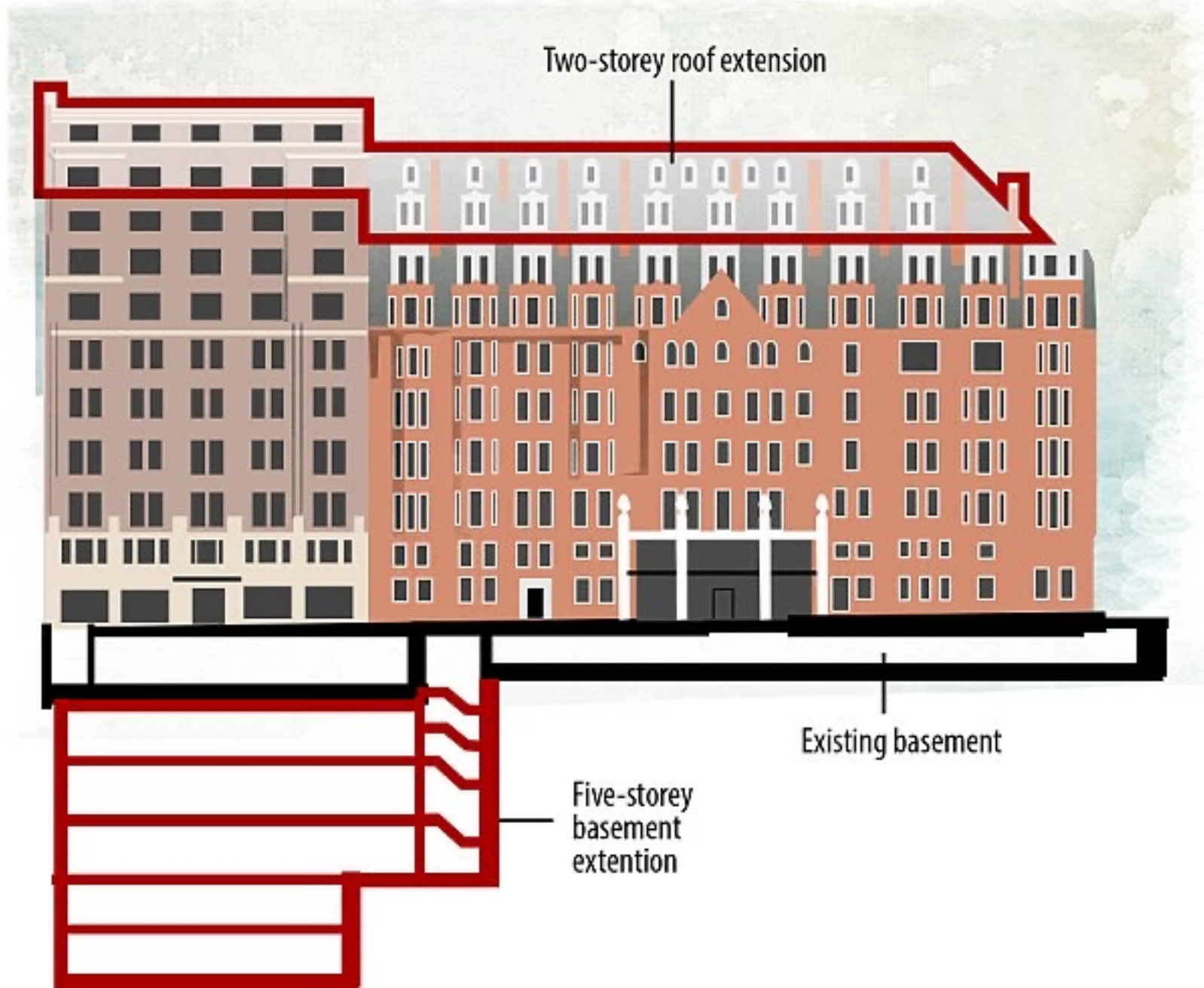


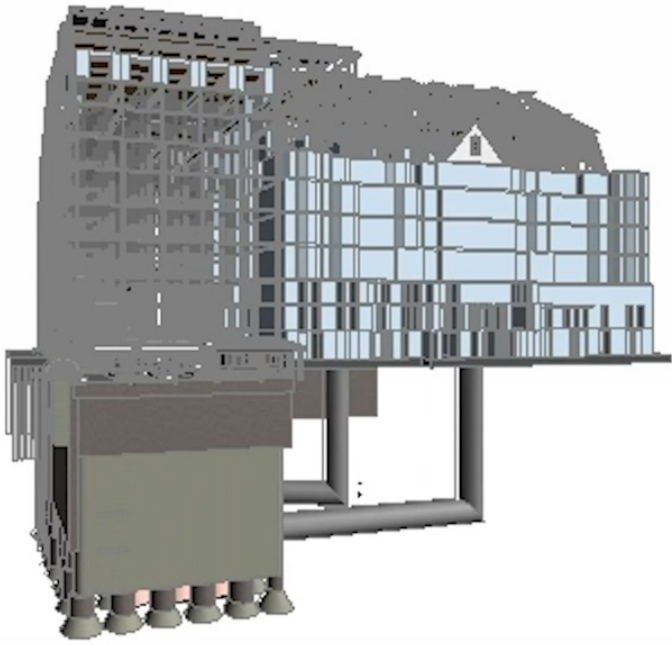
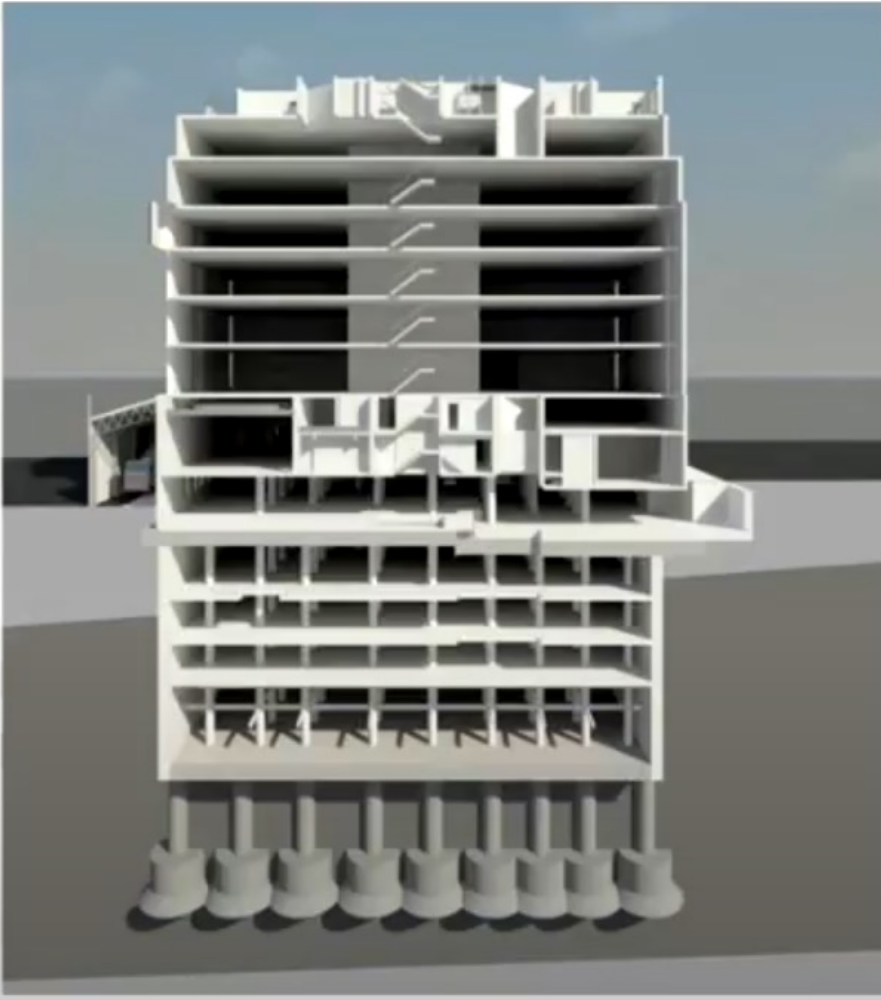
CLARIDGE'S

The logo for Kane, consisting of the word "kane" in a white, lowercase, sans-serif font on a blue background with a vertical green bar to the right.

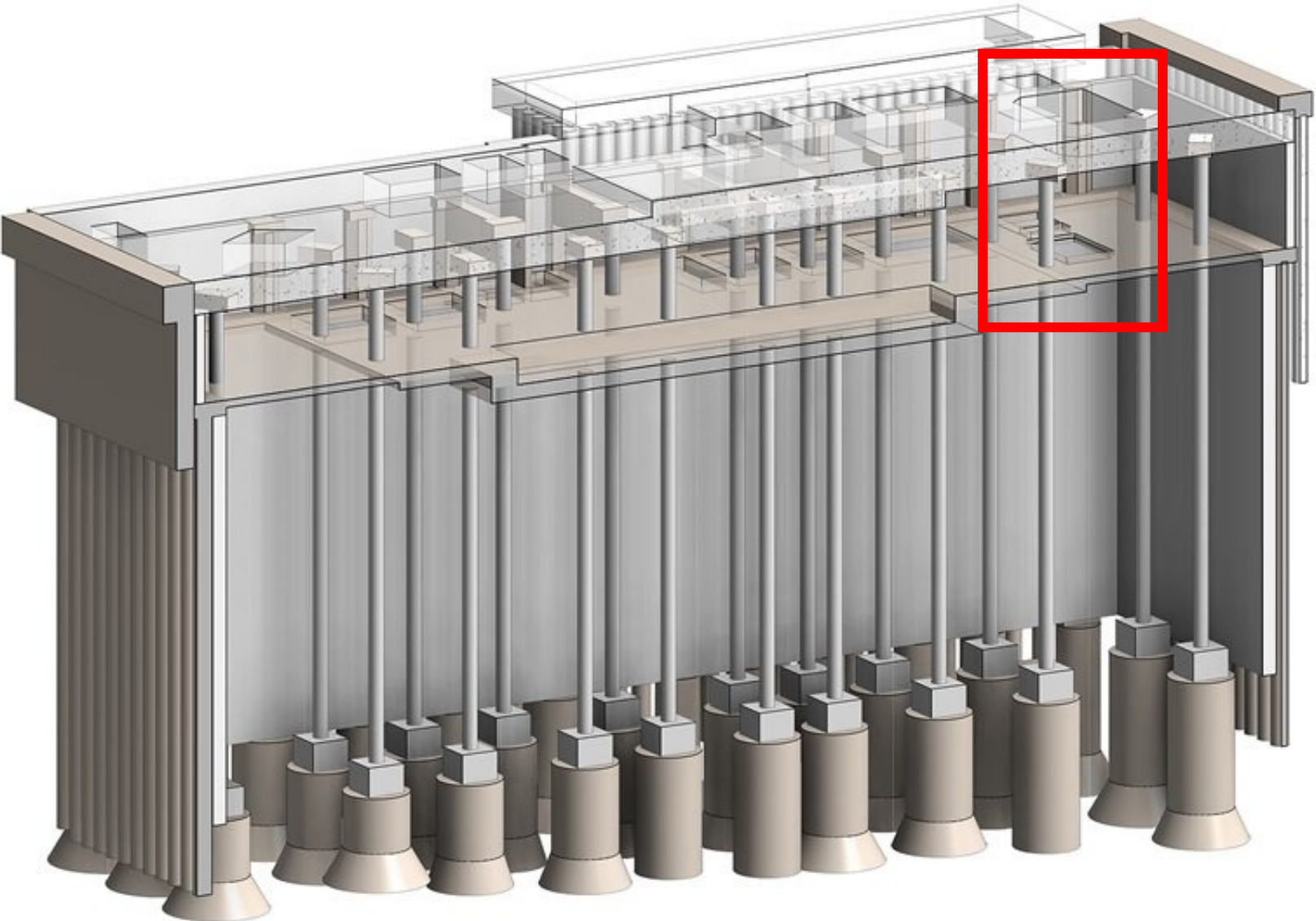


Concept
Design
"Iceberg
Basement"

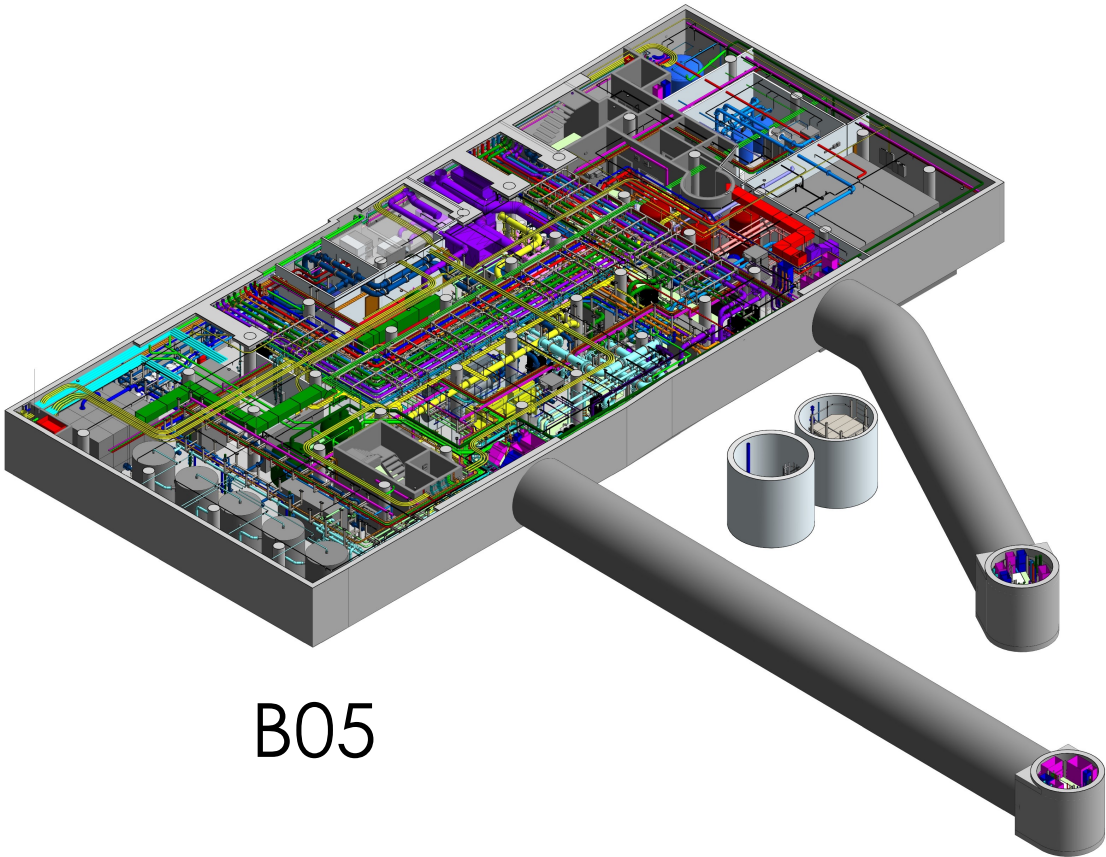




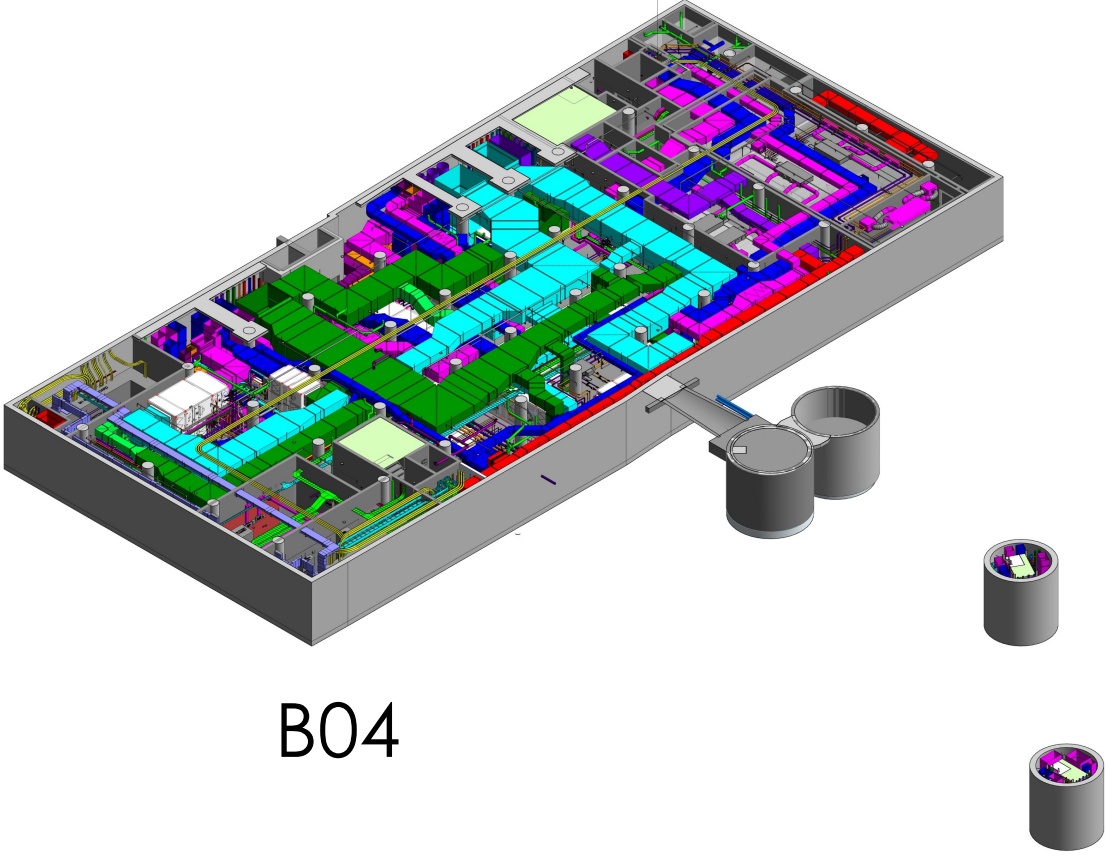




Scope of Works



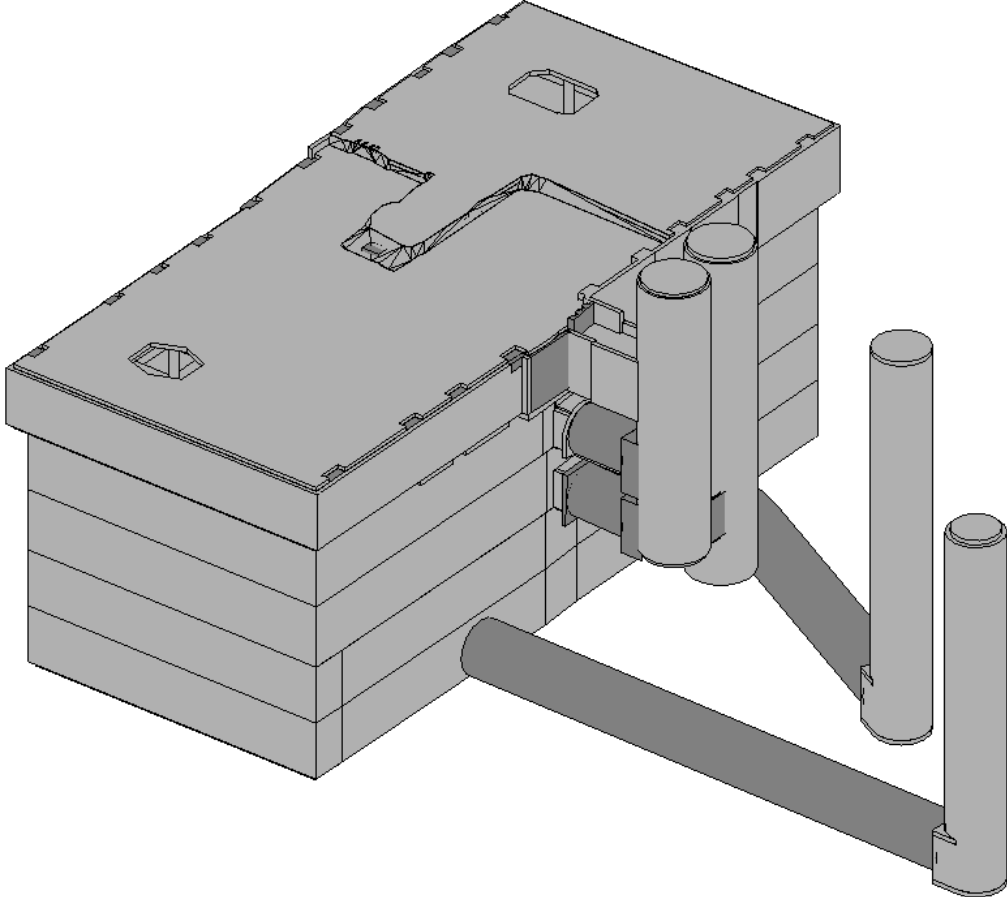
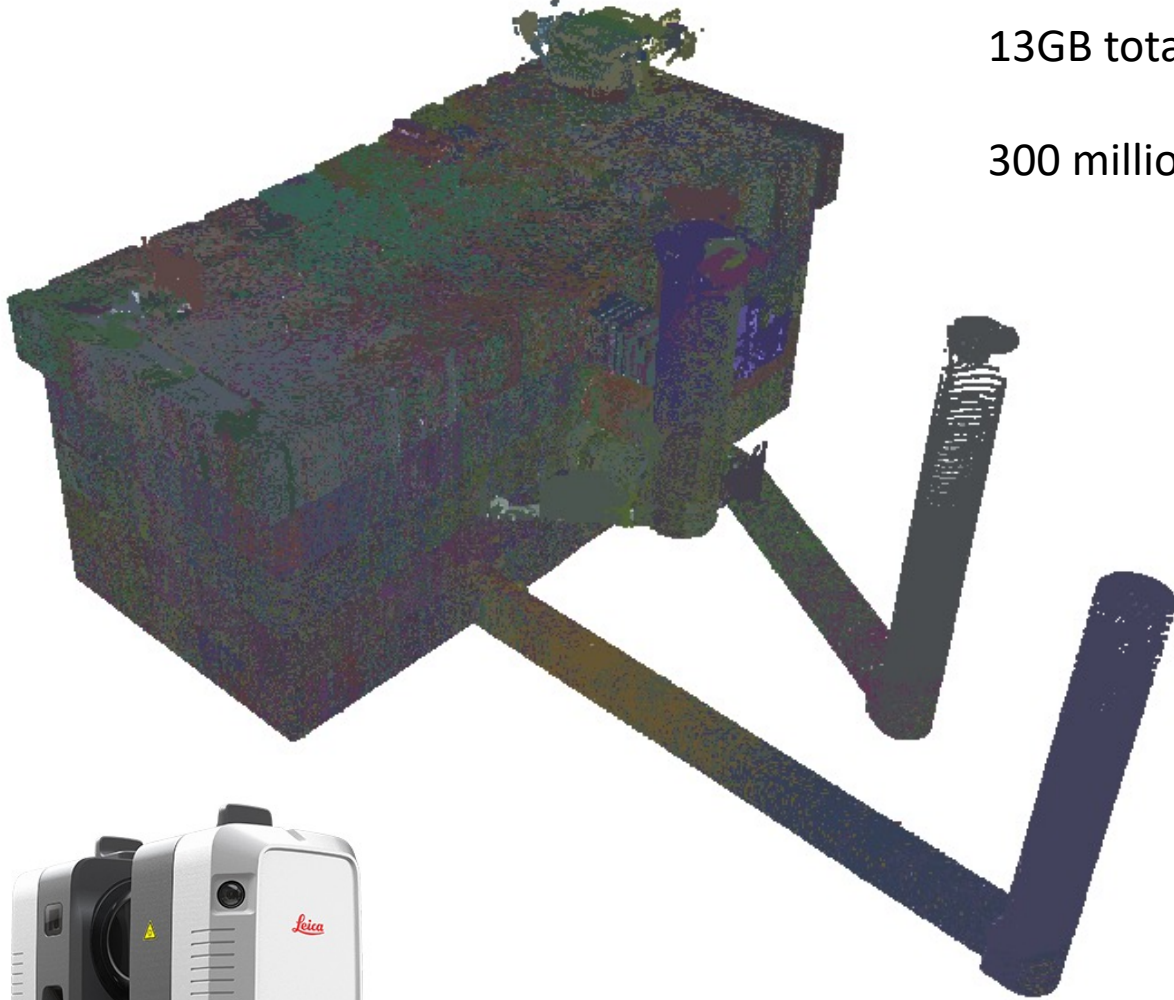
B05



B04

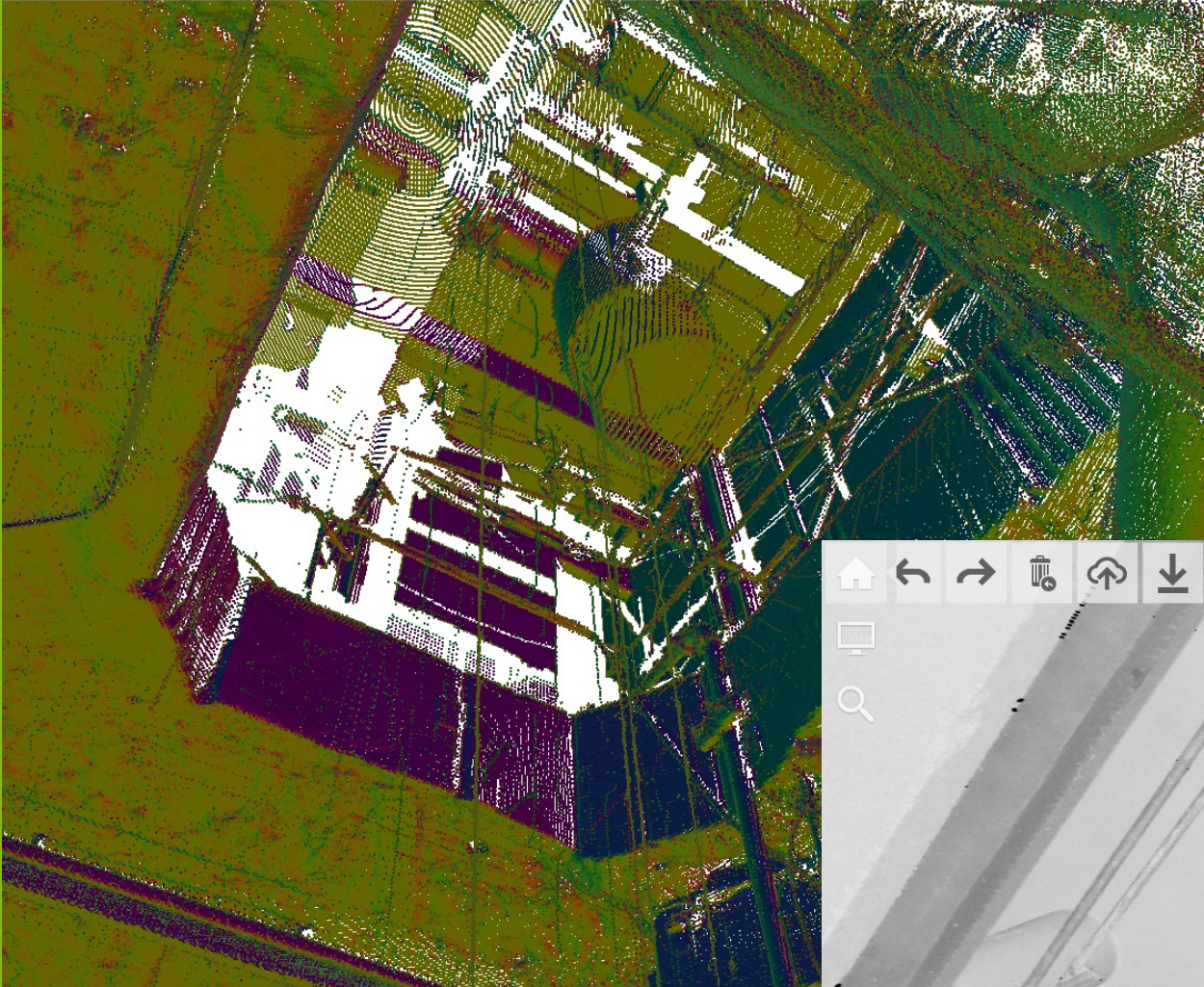
13GB total file size

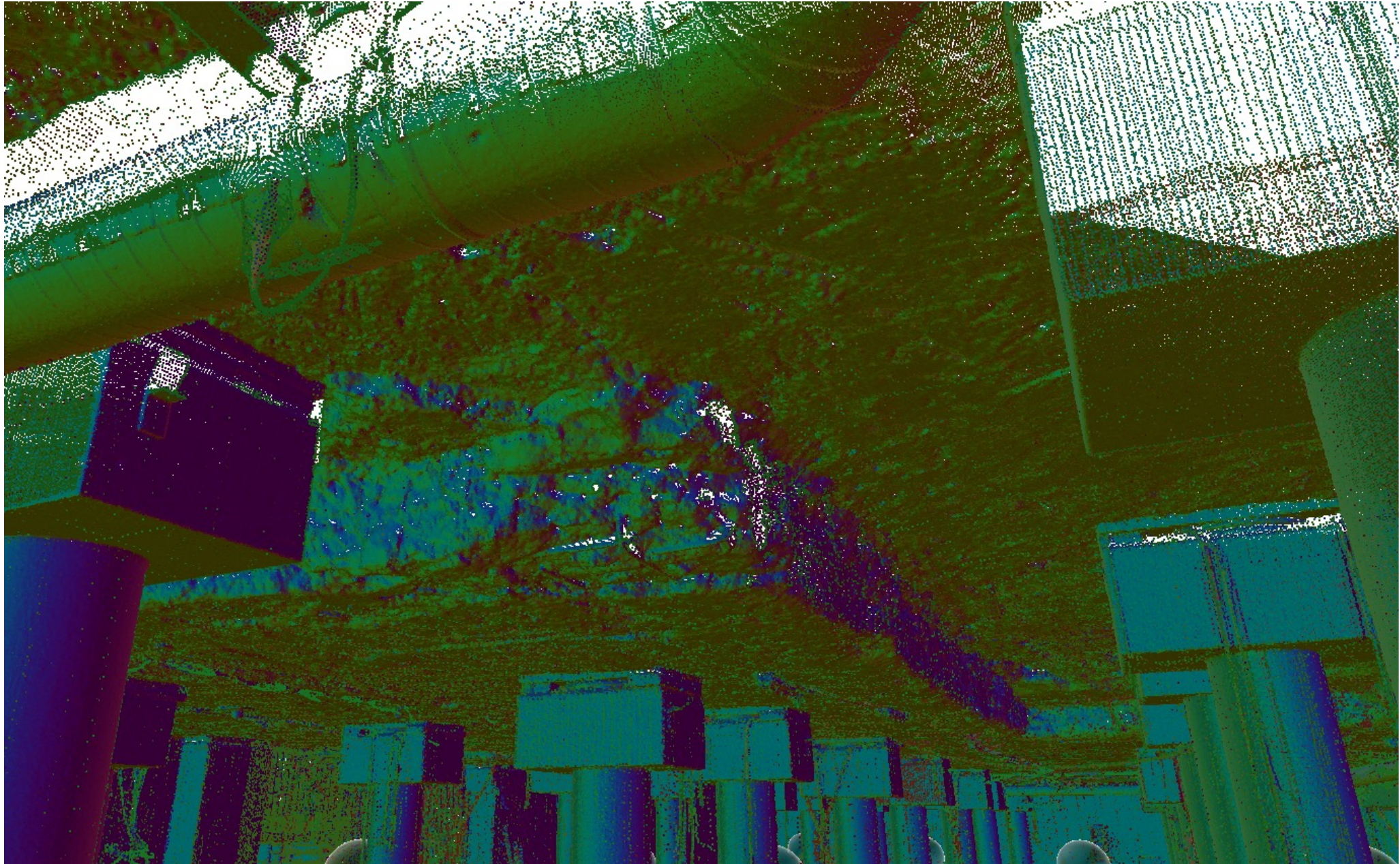
300 million points



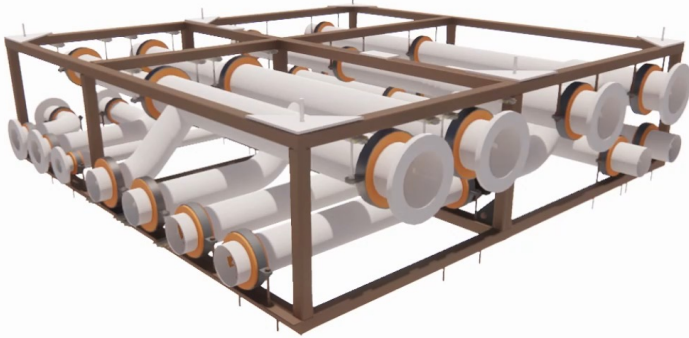
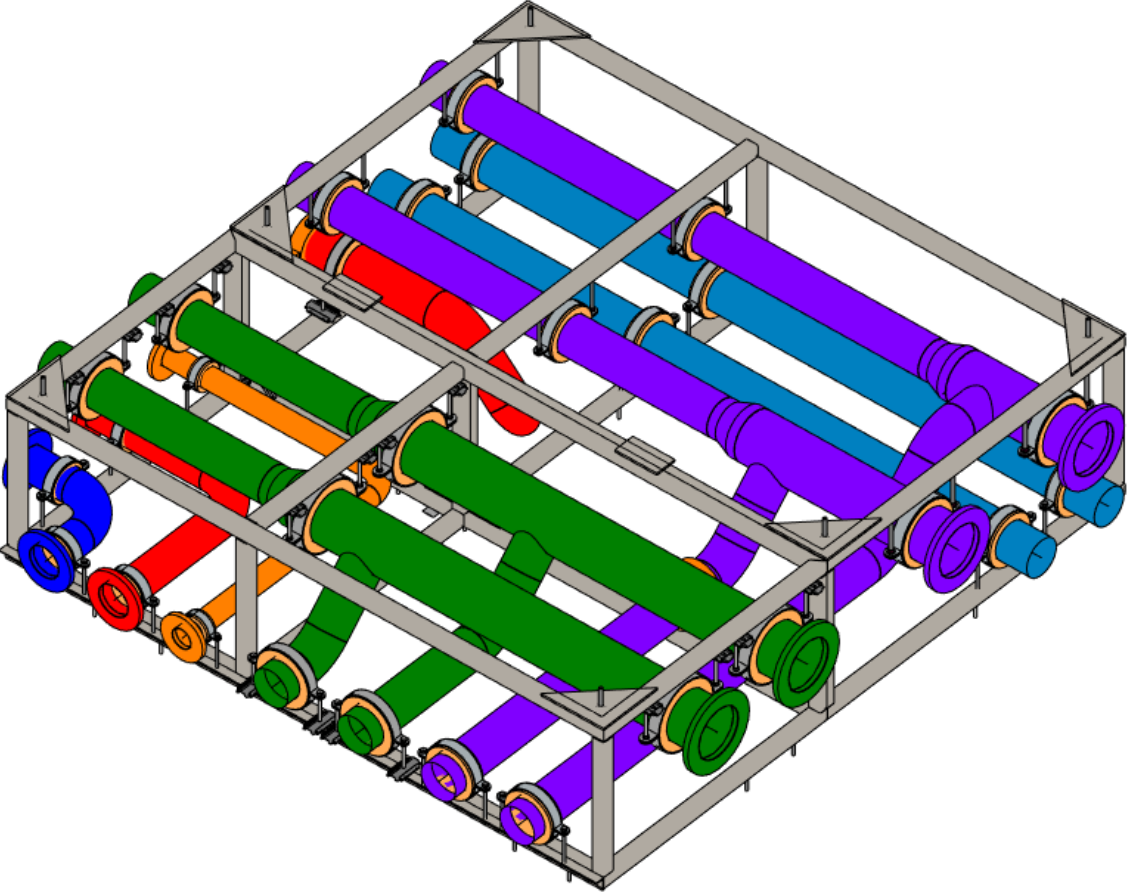
HEXAGON

Leica
Geosystems

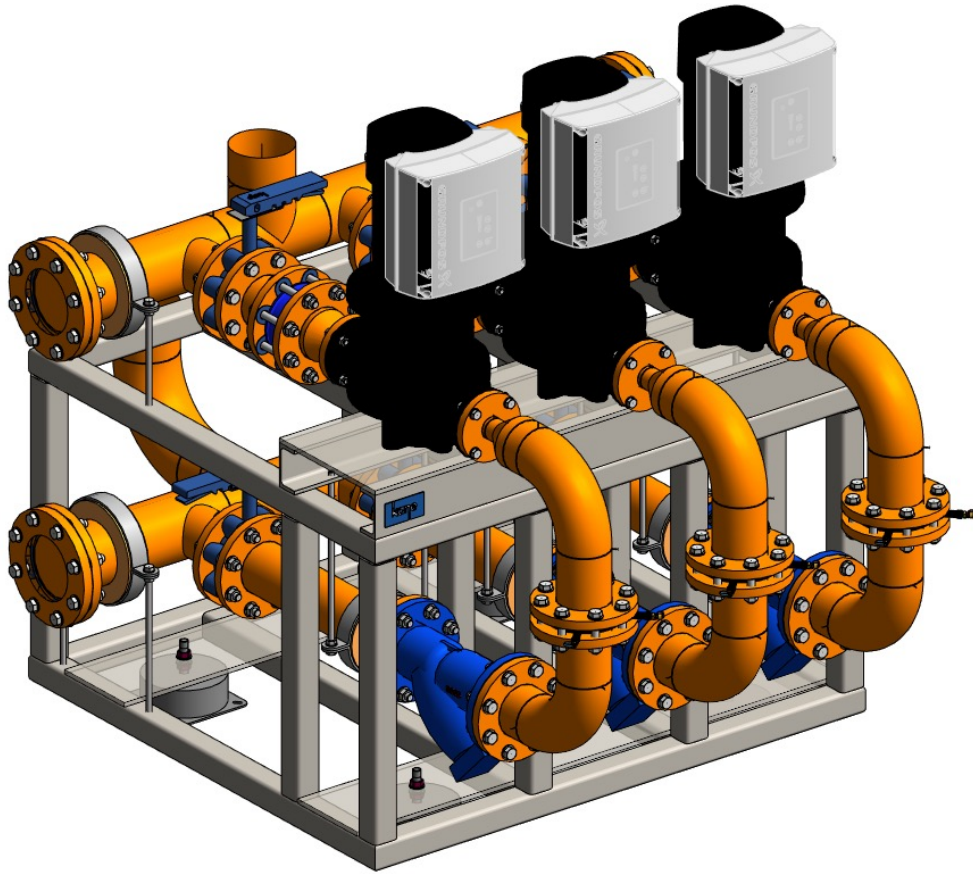




Revit Assemblies – Pipework Modules



Revit Assemblies - Rigs



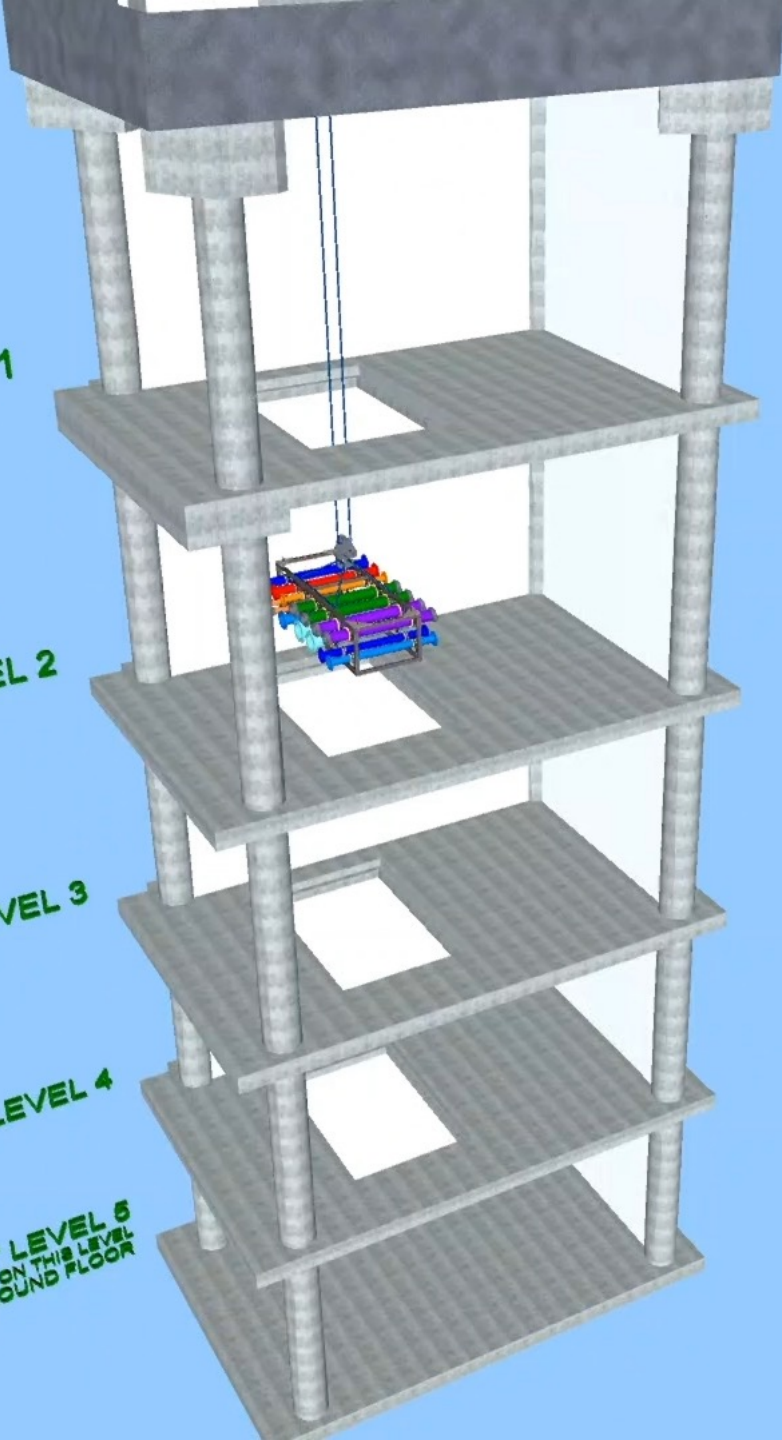
BASEMENT LEVEL 1

BASEMENT LEVEL 2

BASEMENT LEVEL 3

BASEMENT LEVEL 4

BASEMENT LEVEL 5
ENERGY CENTRE ON THIS LEVEL
22M BELOW GROUND FLOOR



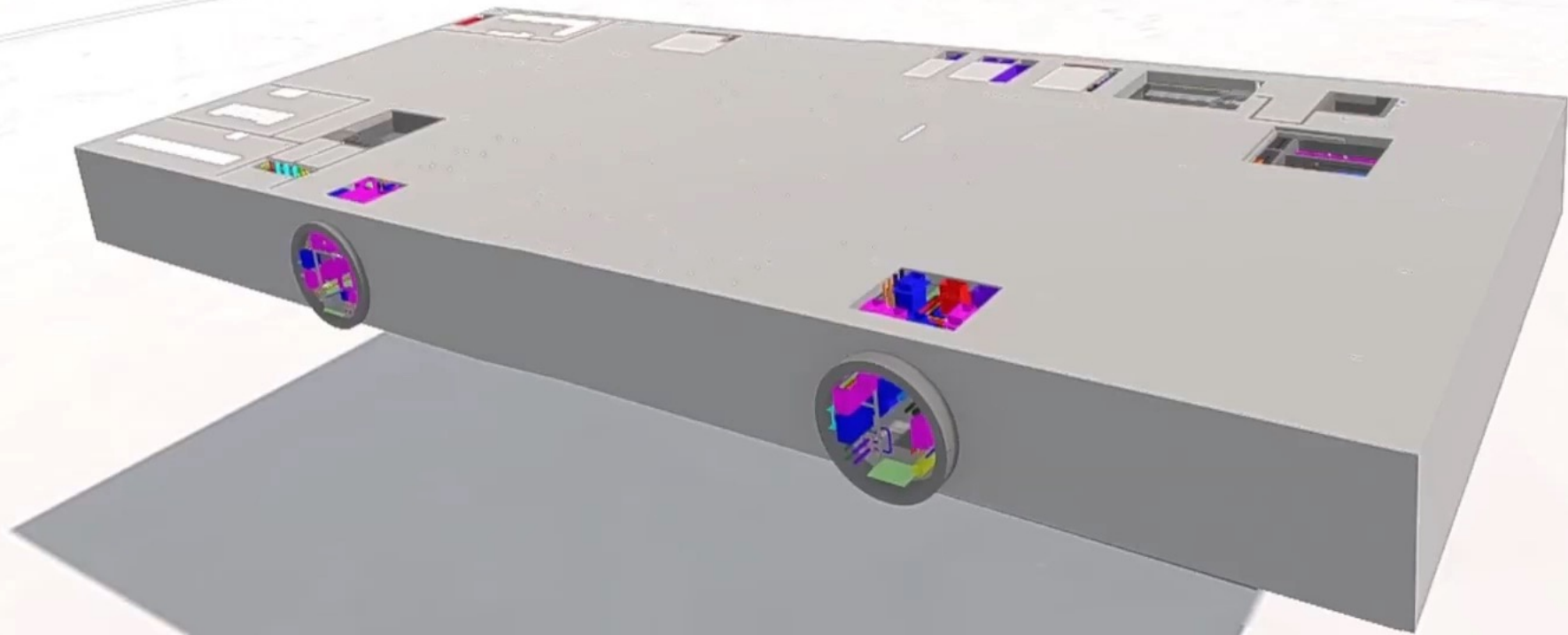


Virtual Reality



 **oculus**

 **IRIS VR**
PART OF THE WILD



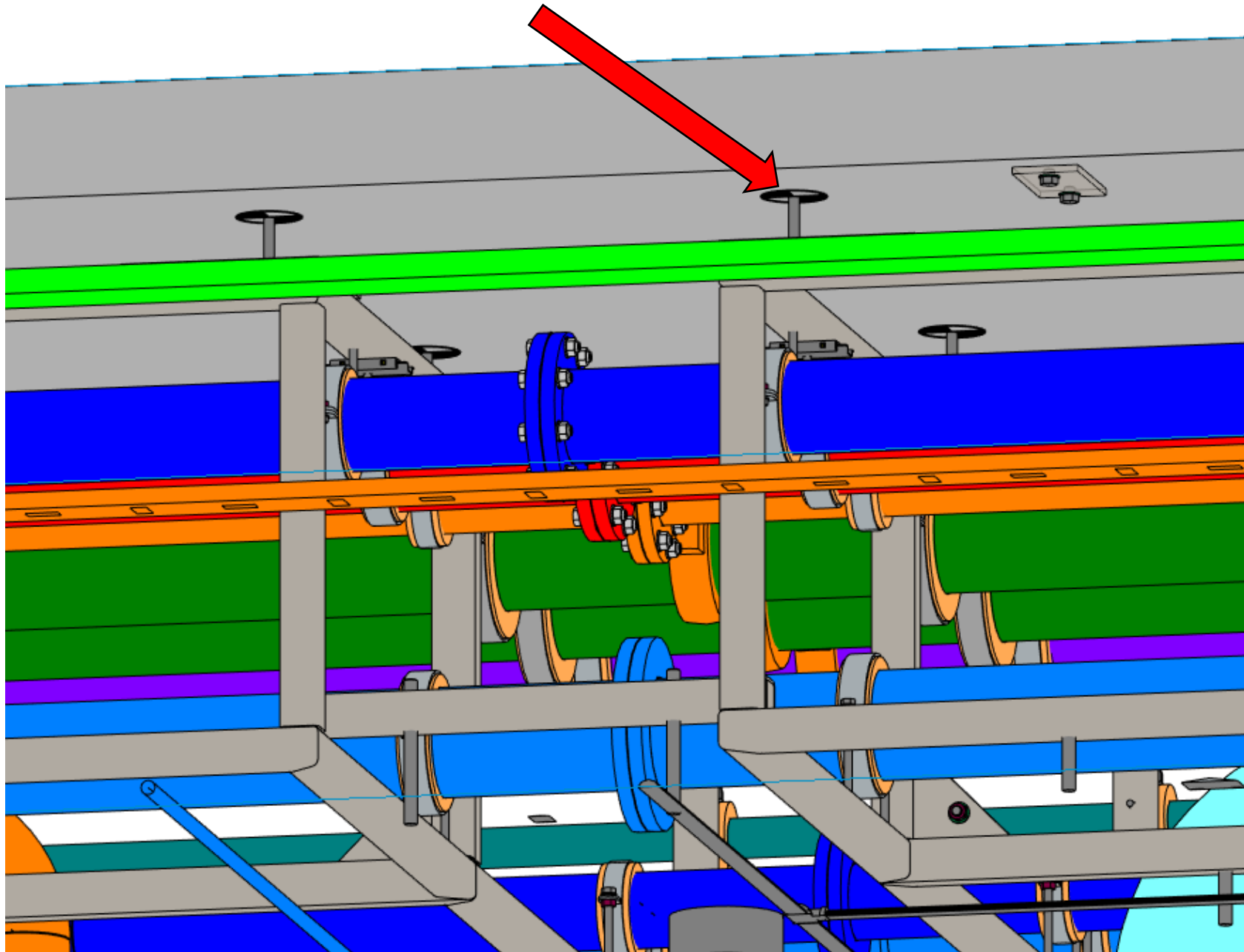
Precision Setting Out

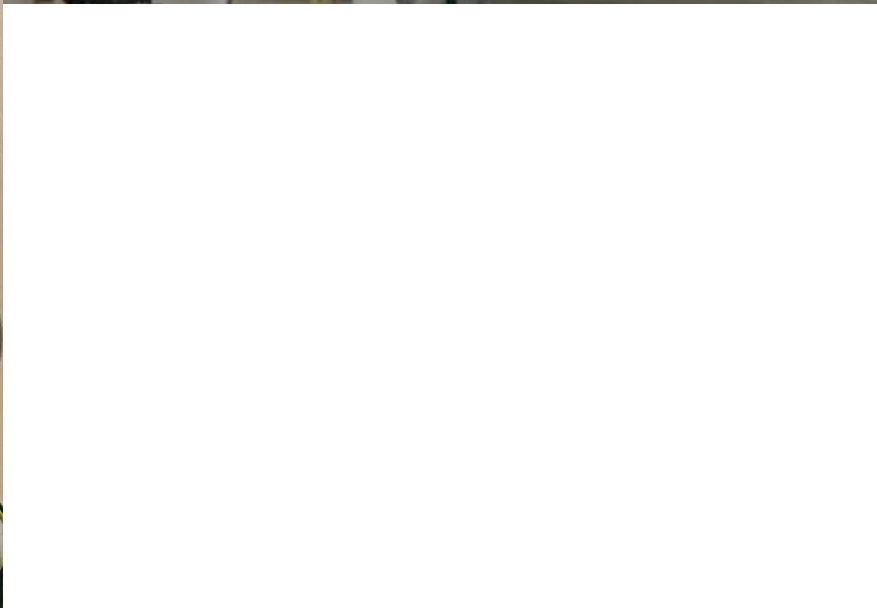


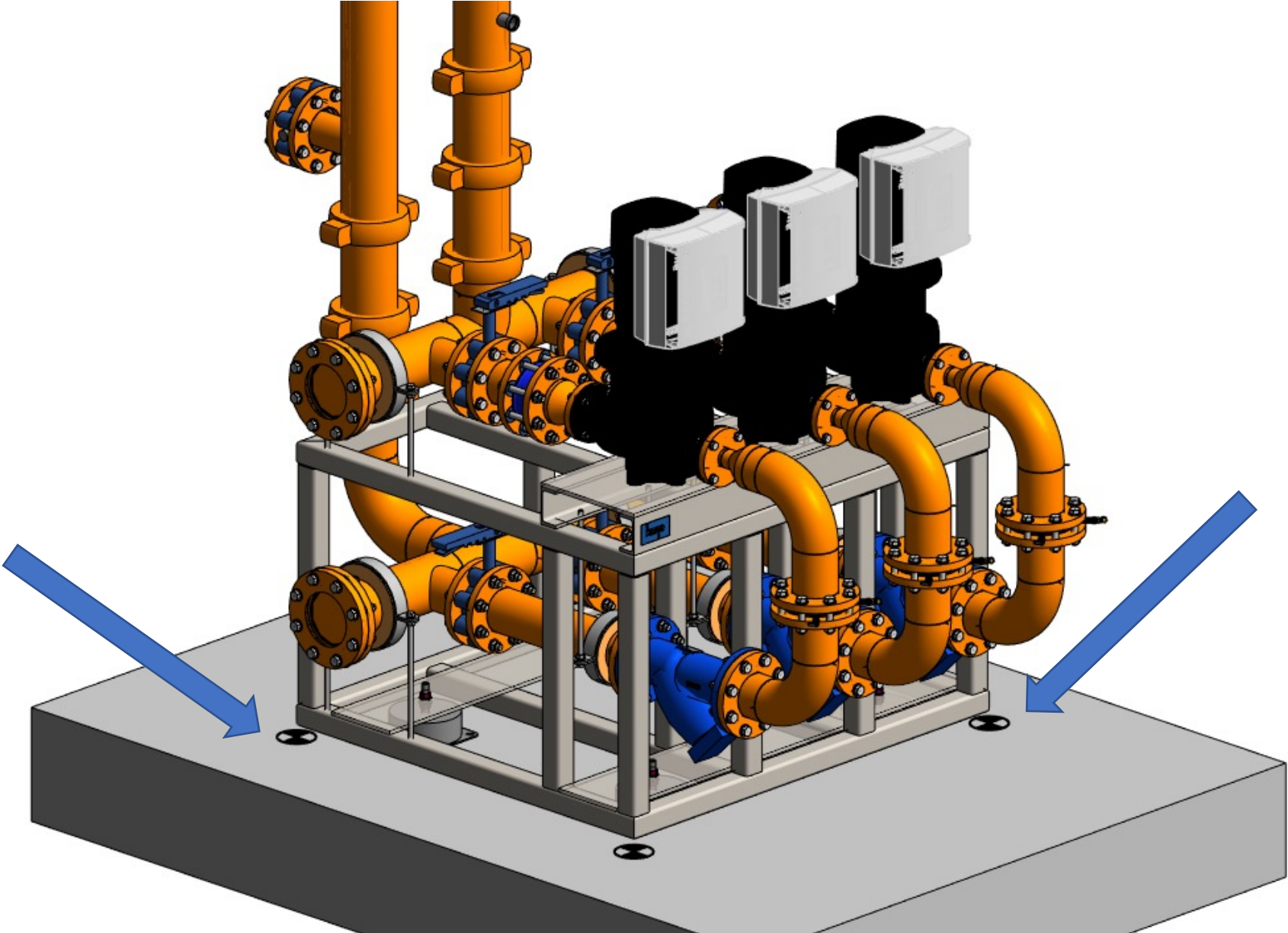
Leica
Geosystems

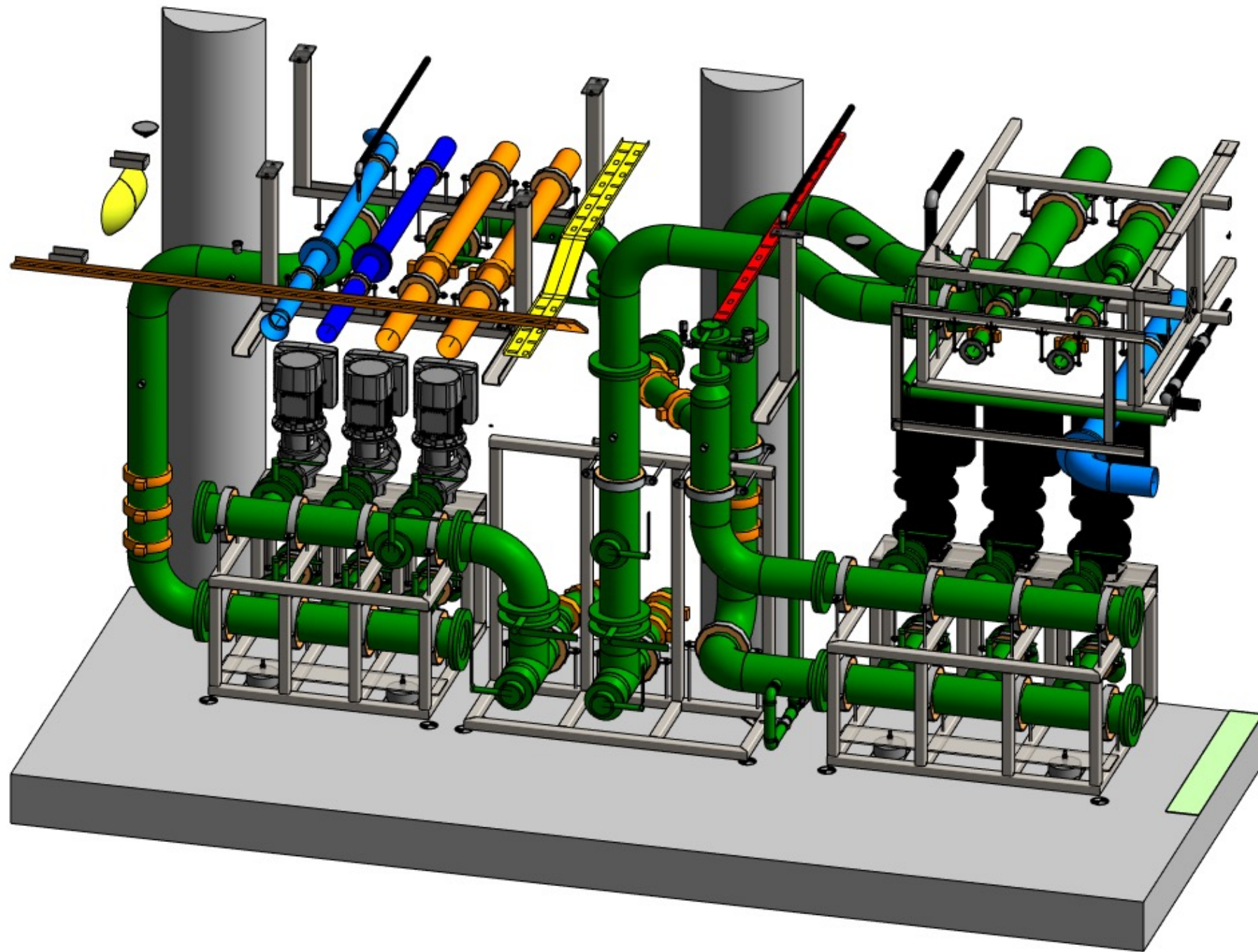
icon
intelligent construction



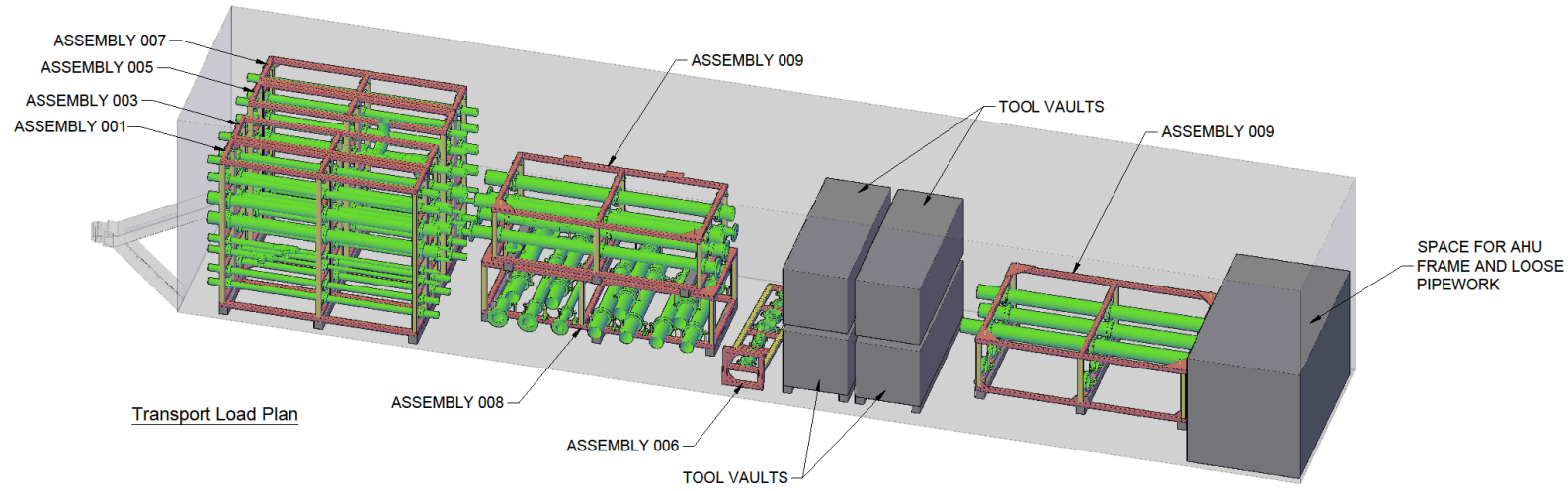




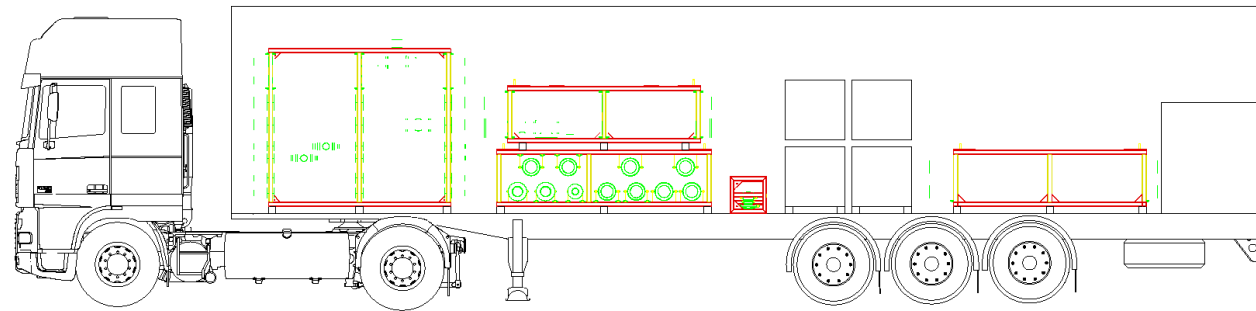




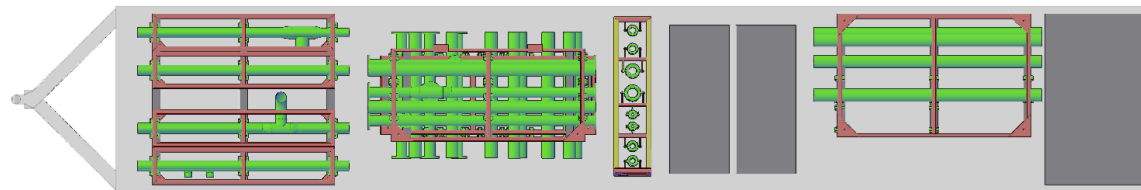
Logistics using BIM



Transport Load Plan



Elevation

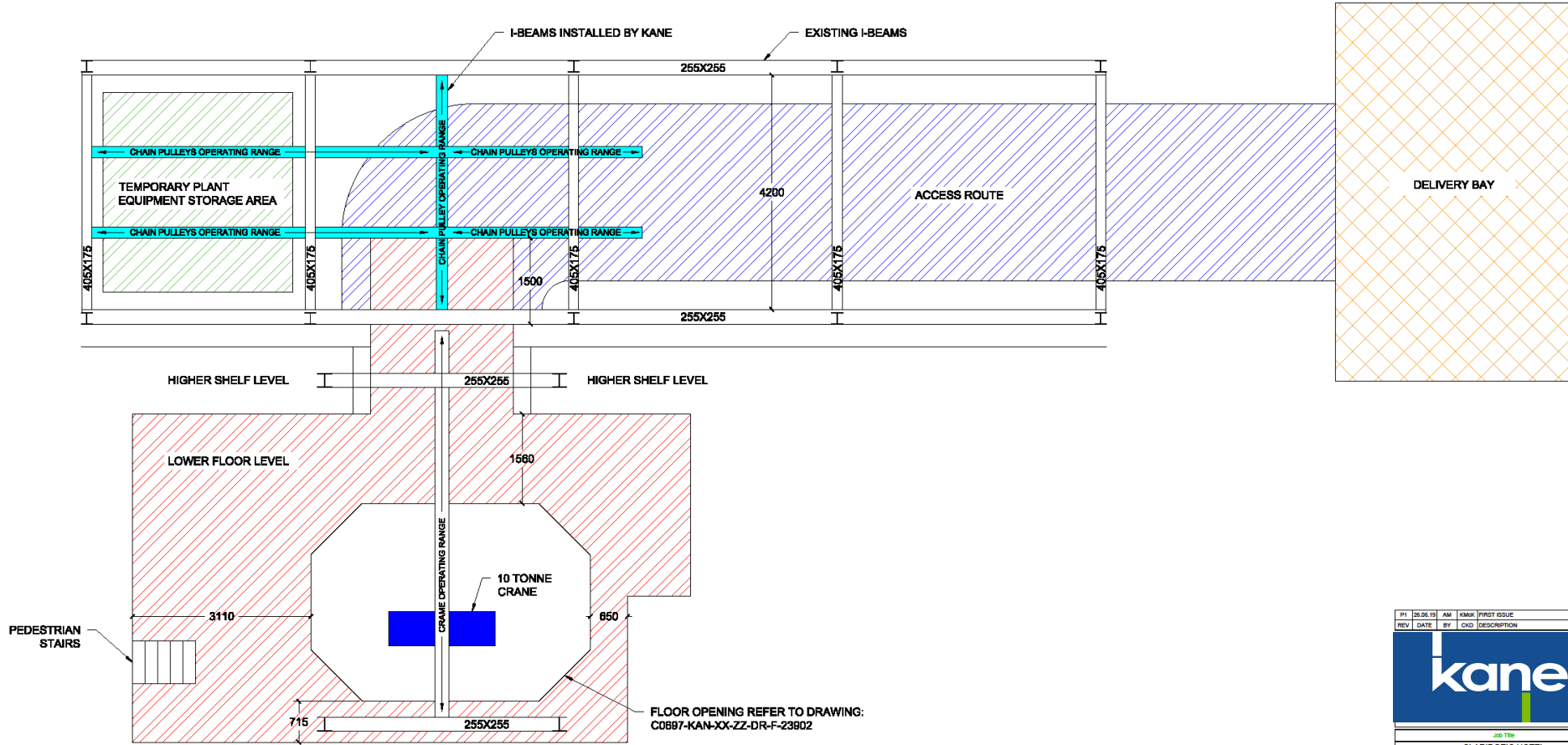


Plan View

P1	12/08/19	DH	JMM	FIRST ISSUE	
REV	DATE	BY	CHK	DESCRIPTION	
20-700					
CLARIDGE'S HOTEL CENTRAL PLANT WORKS MAYFAIR, LONDON W1K 4HR					
Drawing Title					
TRANSPORT LOAD PLAN DELIVERY 001					
Client					
MAYBORNE HOTEL GROUP					
Architect					
BLAIR ASSOCIATES					
Drawn	Checked	Approved	Issue Date		
DH	JMcM	JMcM	12/08/19		
Drawn By	Checked By	Approved By	Scale		
NTS			FOR INTERNAL USE ONLY		
Project	Drawing Number	Rev			
C0694	XXXXX	P1			



40-41 BROOK MEWS



PI	20.06.19	AM	KMcK	PRINT ISSUE
REV	DATE	BY	CHK	DESCRIPTION



Job Title
 CLARIDGE'S HOTEL
 CENTRAL PLANT WORKS
 MAYFAIR, LONDON W1K 4HR

Drawing Title
 LOWER GROUND FLOOR
 FLOOR DETAIL
 PLAN VIEW

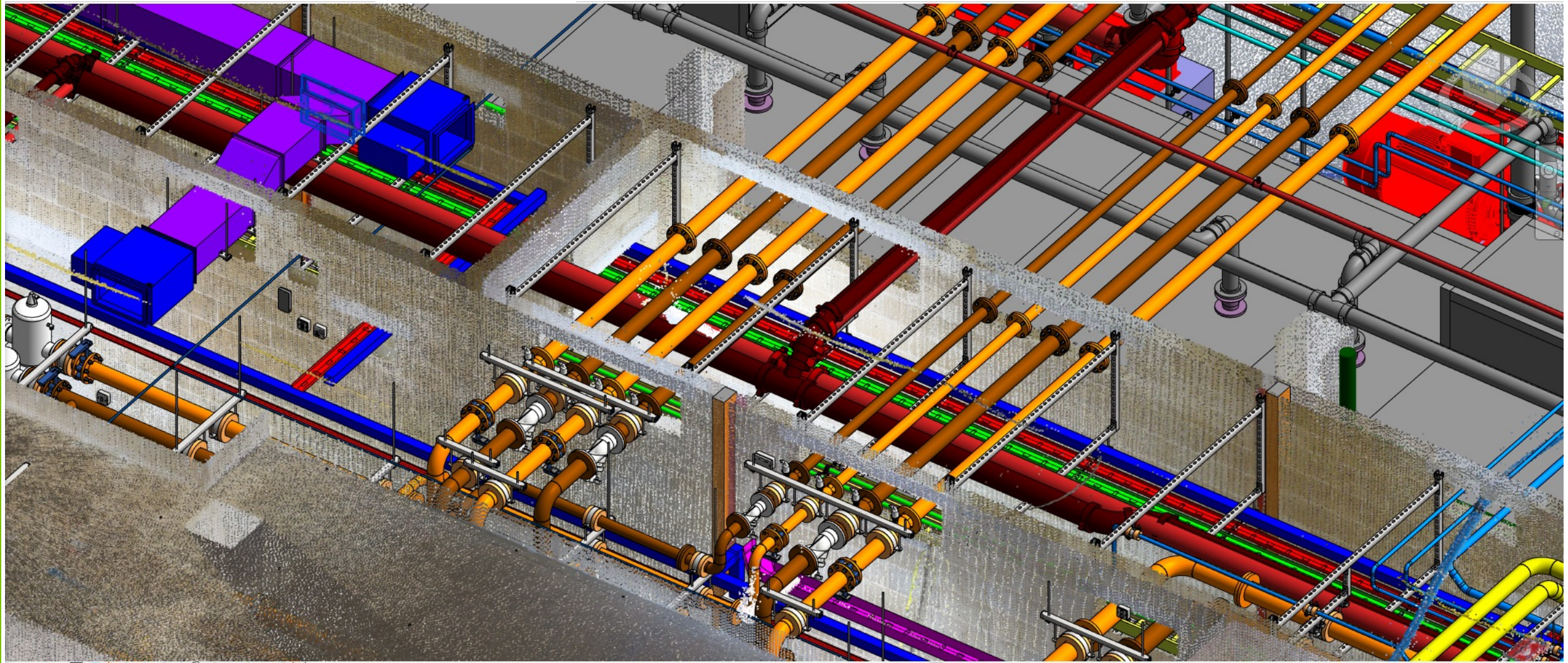
Client
 MAYBORNE HOTEL GROUP

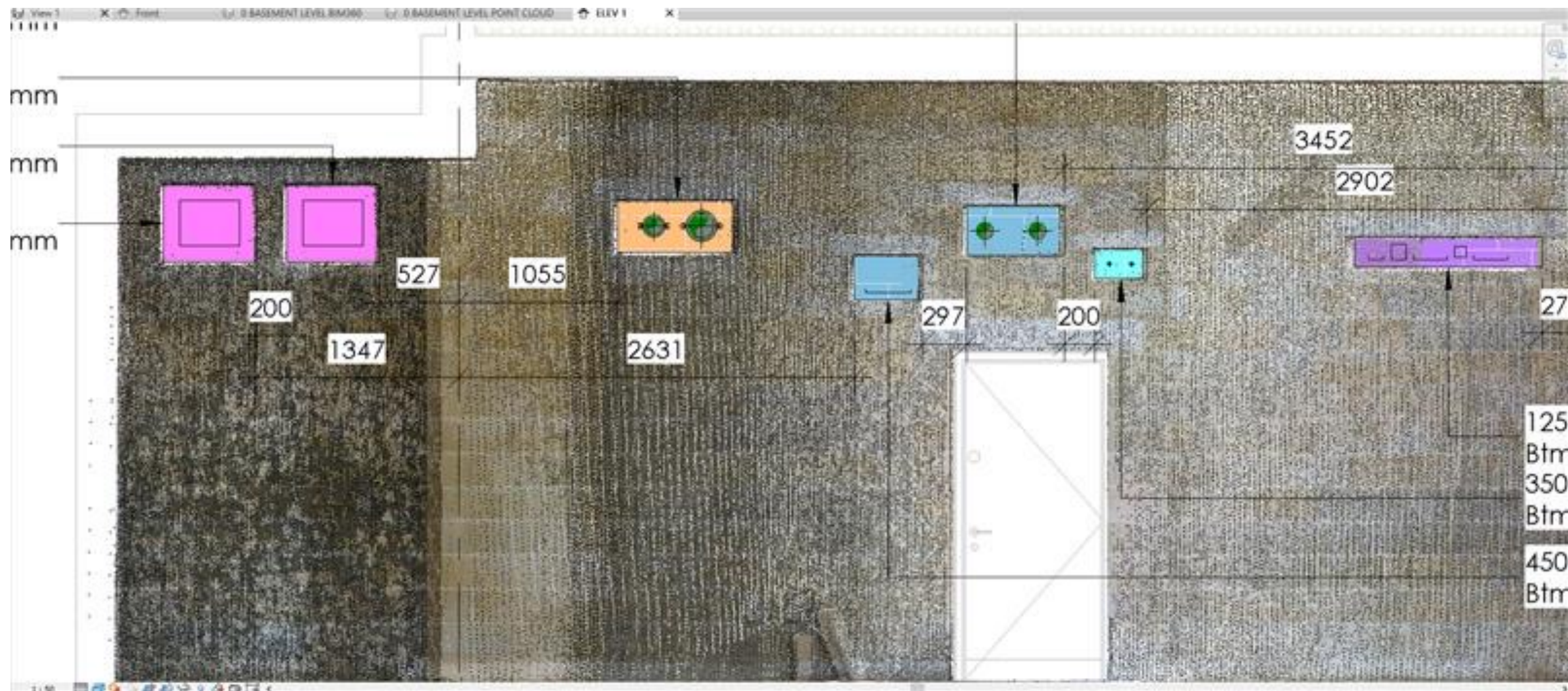
Architect
 BLAIR ASSOCIATES

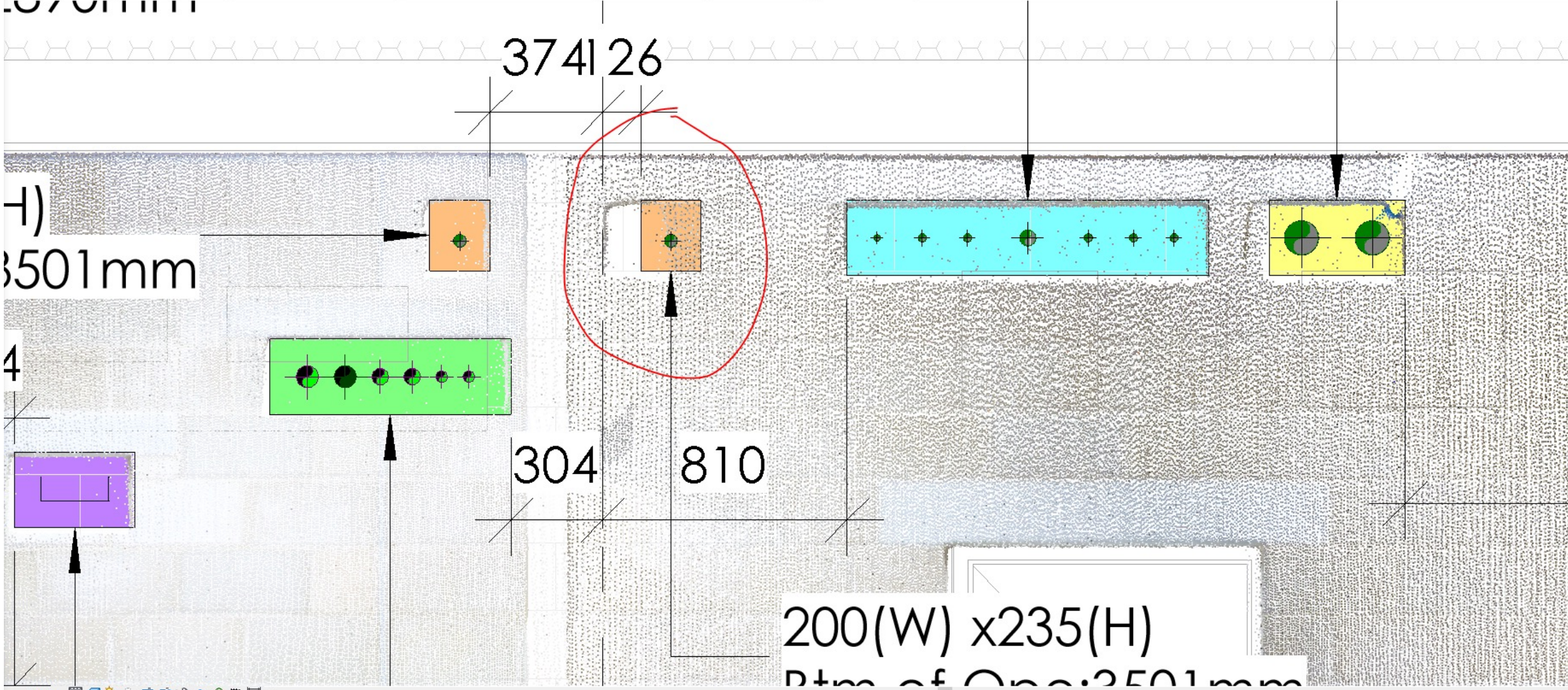
Drawn	Checked	Approved	Issue Date
AM	KMcK	JMcM	26.06.19

Scale: 1:1	Drawing Status	Scale
NTS	FOR INFORMATION	S2

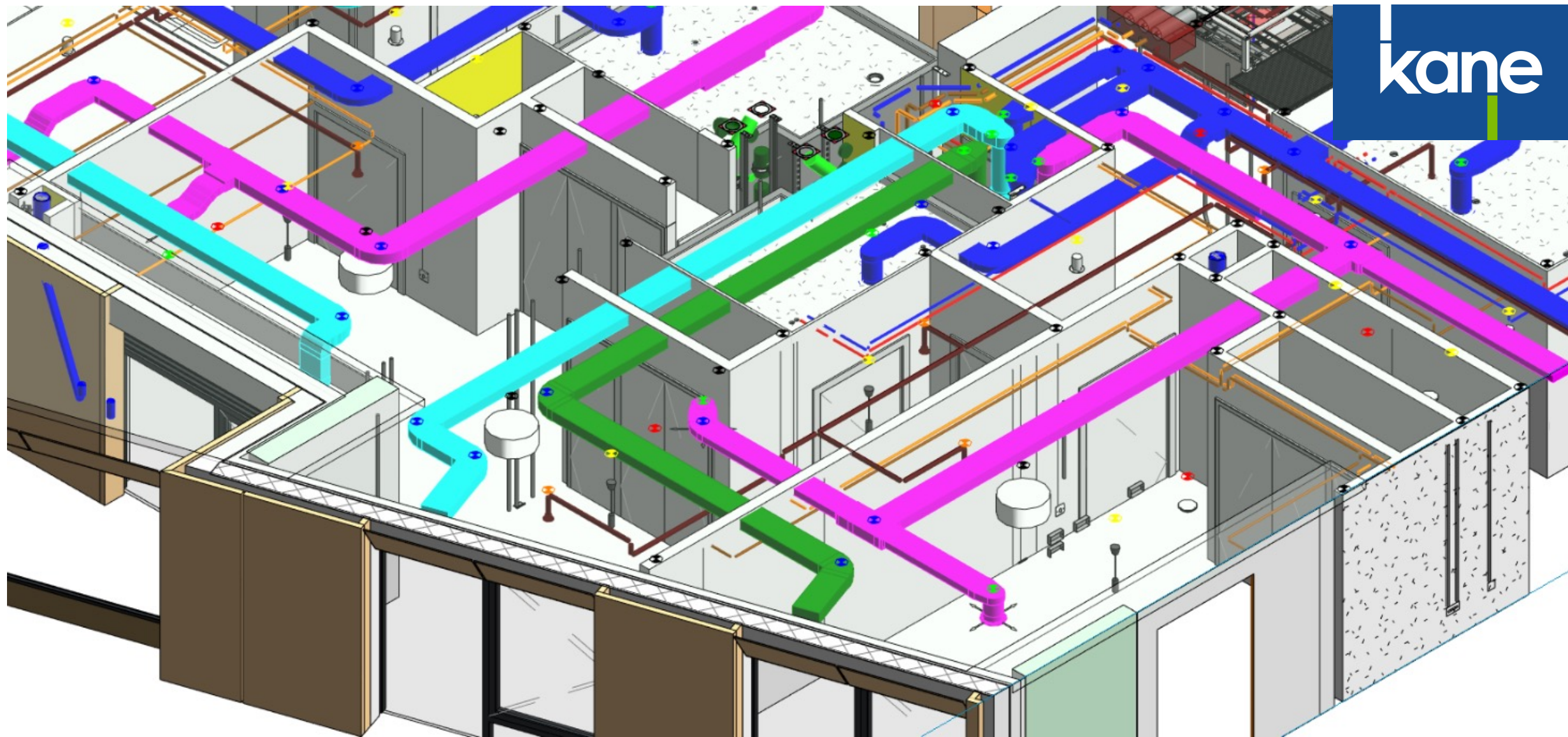
Project	Drawing Number	Rev
CD687	23801	P1







kane







2021/11/15 15:29



Split Screen

1 year and 2 months ago





Displaying 24229 / 24229 Filter

- Search
- Office
- Block D2 - GF
- Block D2 - Level 1
- Block D2 - Level 2
 - Coridor
 - Coridor
 - Coridor
 - Coridor
 - Scene 4
 - Scene 5
 - Scene 6
 - Scene 7
 - Scene 8
 - Scene 9
 - Scene 10
 - Scene 11
 - Scene 12

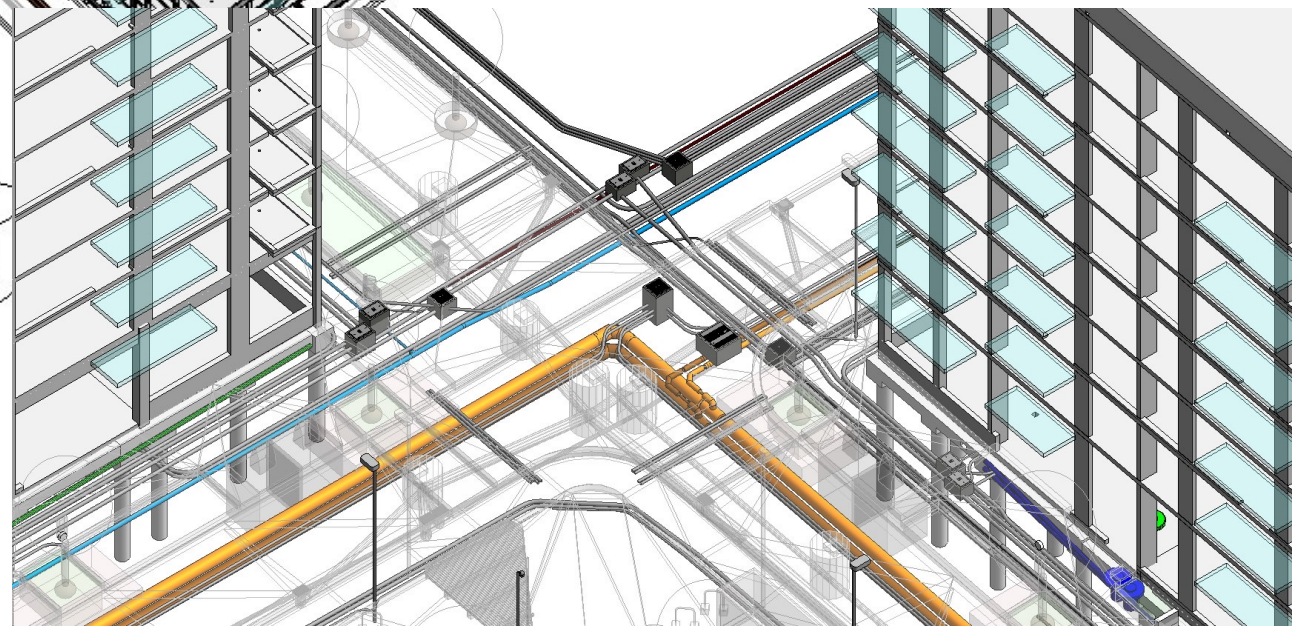
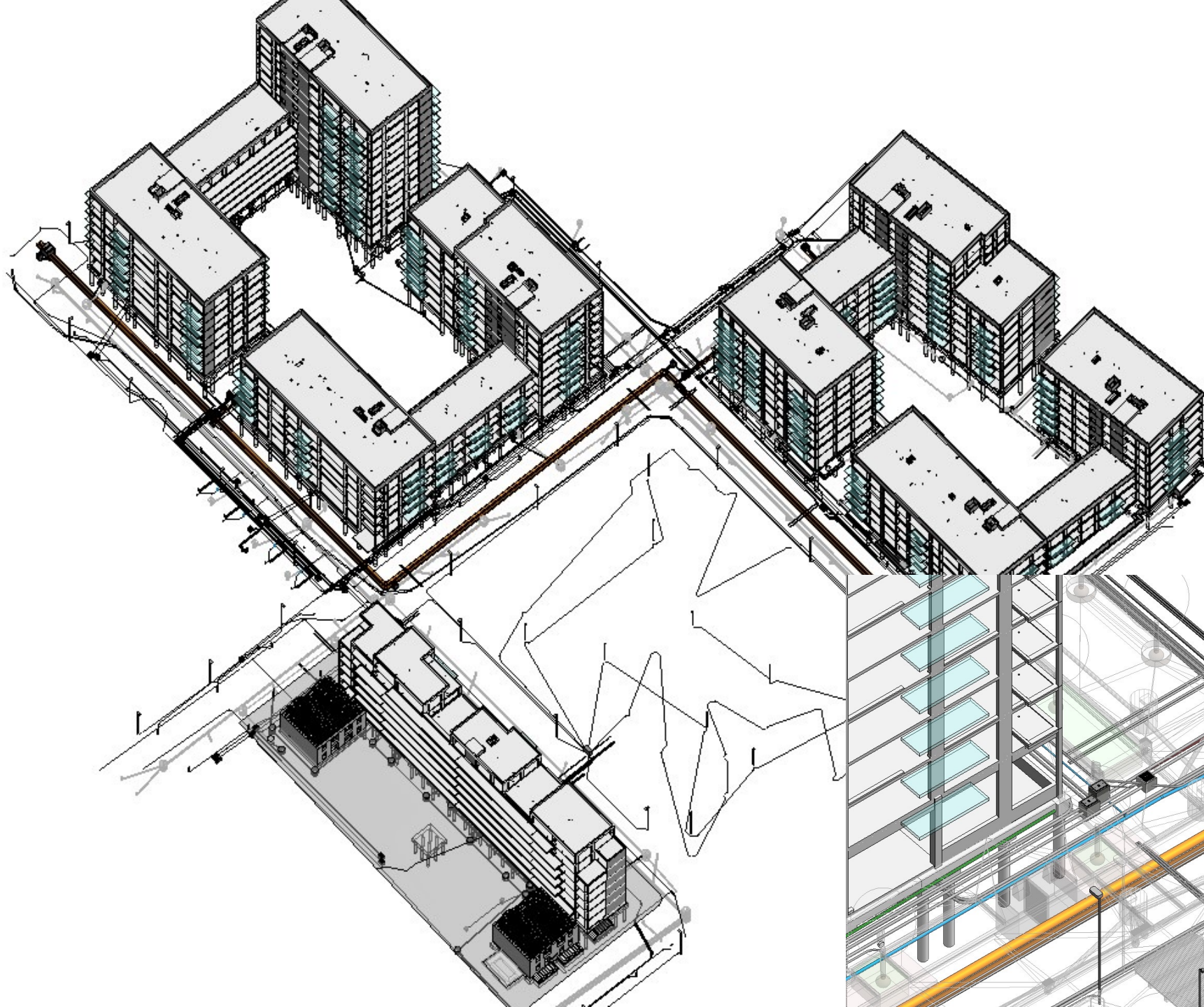
Block D2 - Level 2

2021/08/17 14:22

1 year and 6 months ago

Split Screen







Summary