



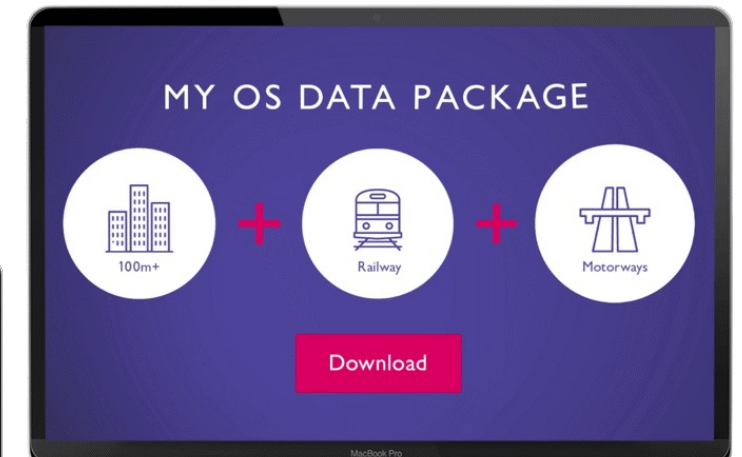
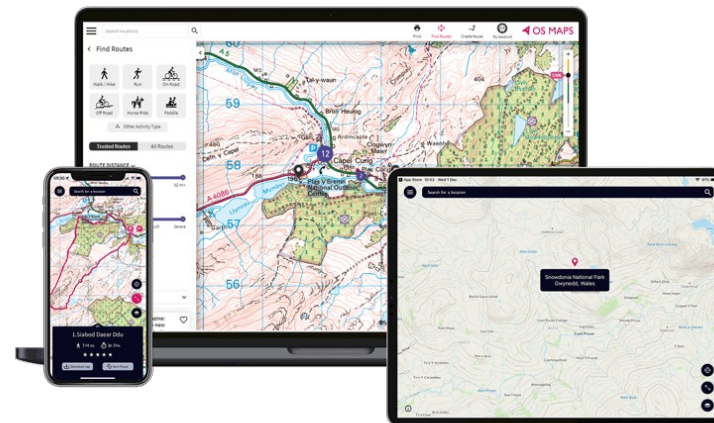
# Using geospatial information to unlock value from Earth observation.

*Donna Lyndsay, Strategic Market Lead – environment and sustainability*



# OS: What we do

- 20,000 updates daily to our database of every landscape feature in England, Scotland and Wales
- 230 surveyors use distance measures and hand-held Global Navigation satellite signal (GNSS) receivers
- Two planes, 120,000 aerial images every year
- OS Net – a network of 110 GNSS receivers means we can capture to an accuracy greater than anyone else in Britain
- We also use unmanned aerial vehicles
- Select + Build – National Geospatial Database making data accessible
- Consumer maps



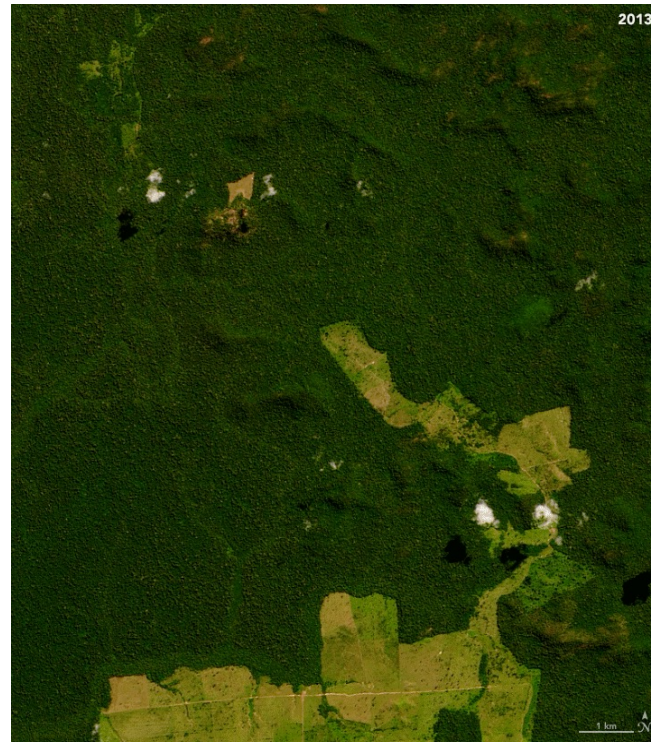


# Earth Observation – key advantages

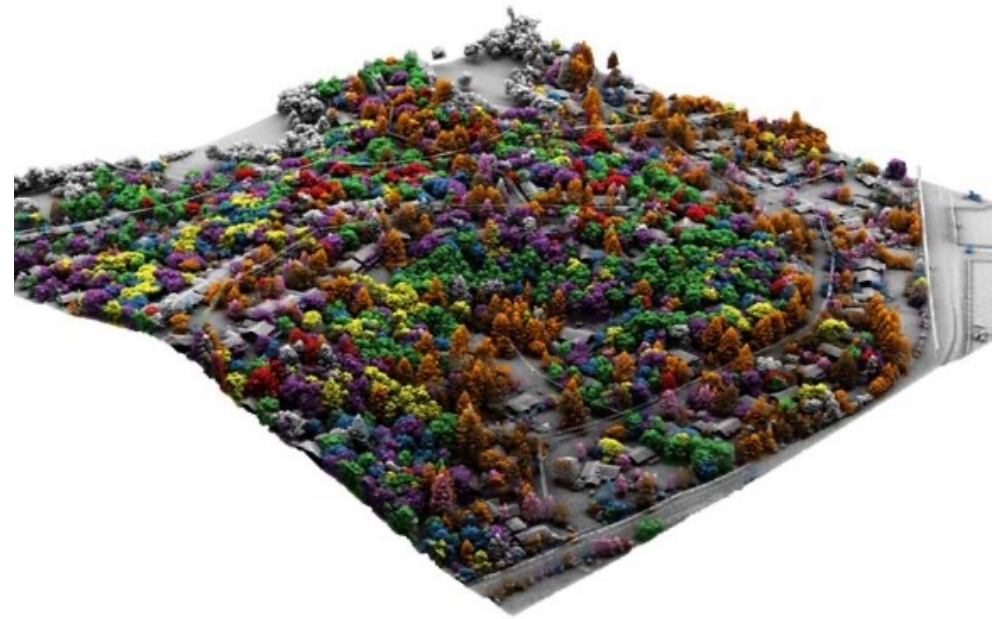
Currency



Time series analysis



Multispectral analysis (optical)



Source: NASA



# Field Observations



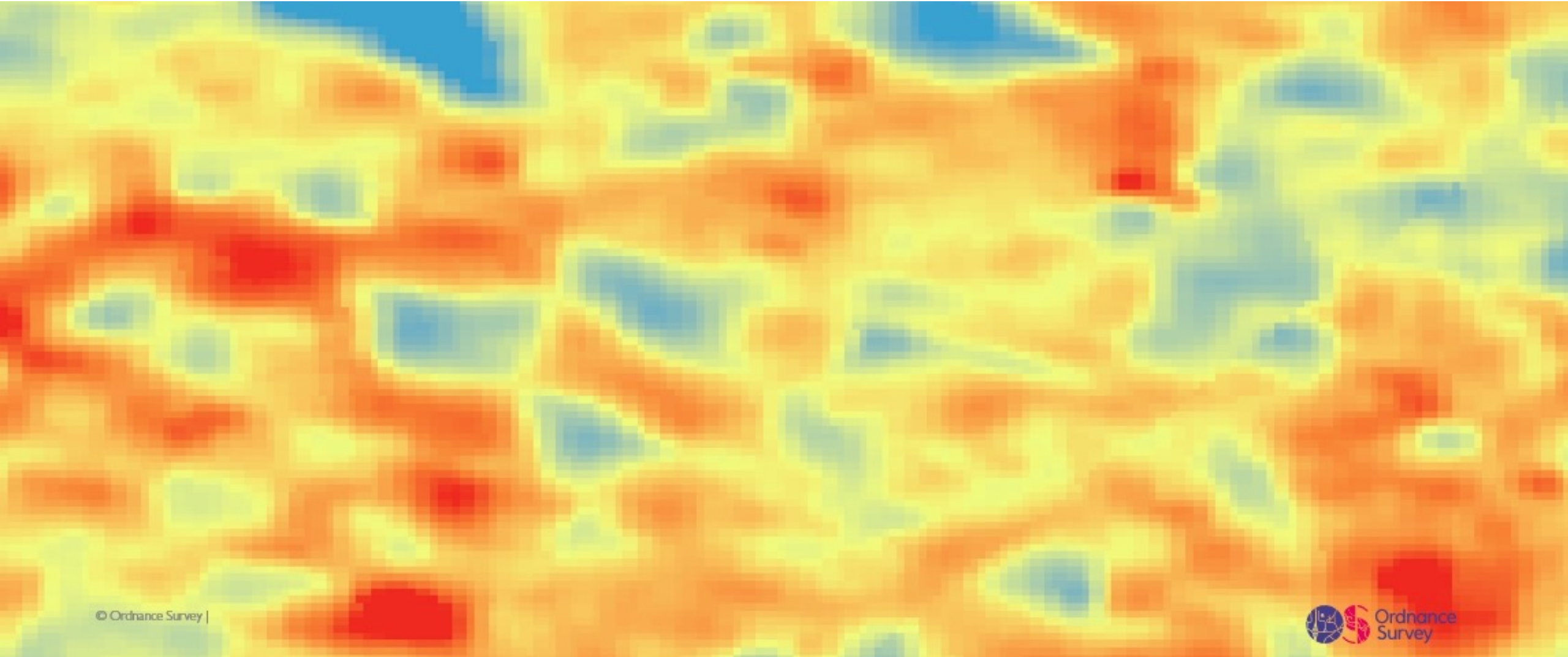


# EO+GEO: Global goals, local impact





# Why EO needs Geo







The map immediately enables non-expert users to clearly identify target areas





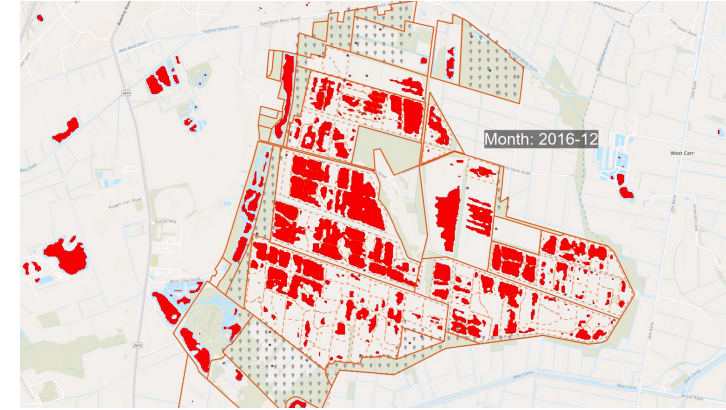
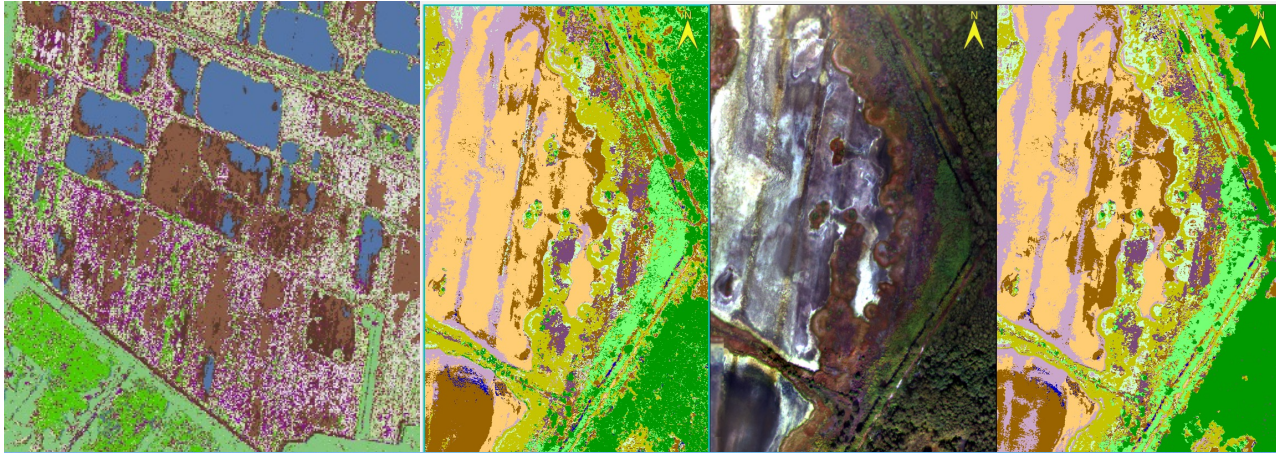


# Landscape scale restoration

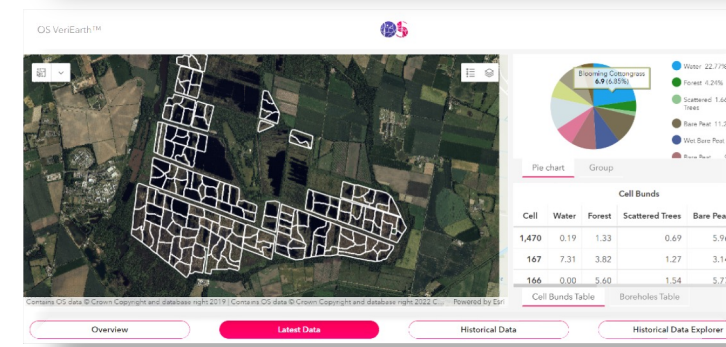
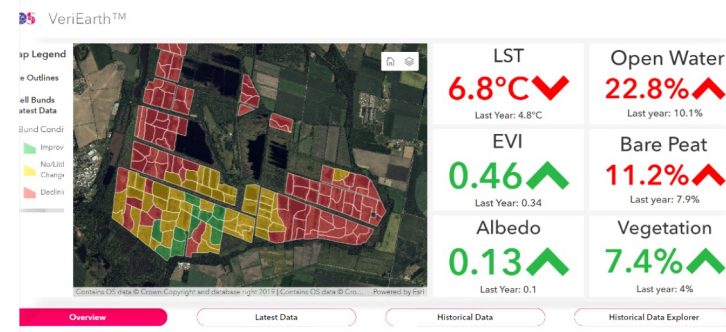




# OS VeriEarth®



The Service ensures visibility of the offset and restoration activity to protect investments and investors from greenwash and reputation damage.







# Global Collaboration





# The Supply Chain problem in numbers

70% of international trade today involves global value chains (OECD)

Supply chains generate **60%** of global emissions (Accenture)

Up to **90%** of an organisation's environmental impact lies in the value chain (Carbon Trust)

**7 years left to reduce emissions by almost half by 2030, to limited to 1.5°C (IPCC)**

Environmental supply chain risks to cost companies **\$120 billion** by **2026** (CDP)

Less than **21%** of companies have complete **visibility** into sourcing of sustainable products (SAP/Oxford Economics)



# The challenge

**Current methods for visibility of the supply chain is no longer enough to meet regulatory requirements and customer expectations.**

**Or to reduce exposure risk.**

But companies simply don't know where things are.

Can EO+GEO help?



# Solving the problem of where: The Supply Chain Data Partnership

Supply chain community still **lacks the location data on commodity facility assets** (e.g., bulking sites, mills, refineries, transport terminals, storage, processing, etc.) to conduct effective **due diligence** and achieve large scale **traceability to commodity origins**.

We are creating a new **verification system for asset location** that **enables** a wide variety of **transparent monitoring, due diligence and finance** to flow where its most needed.



**Deloitte.**





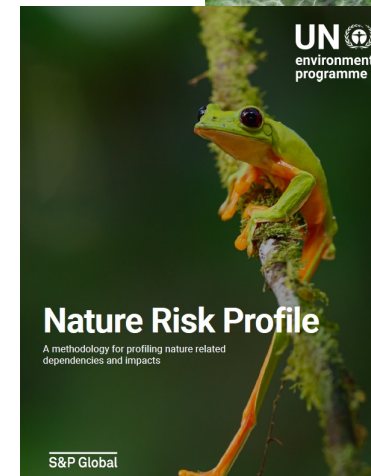
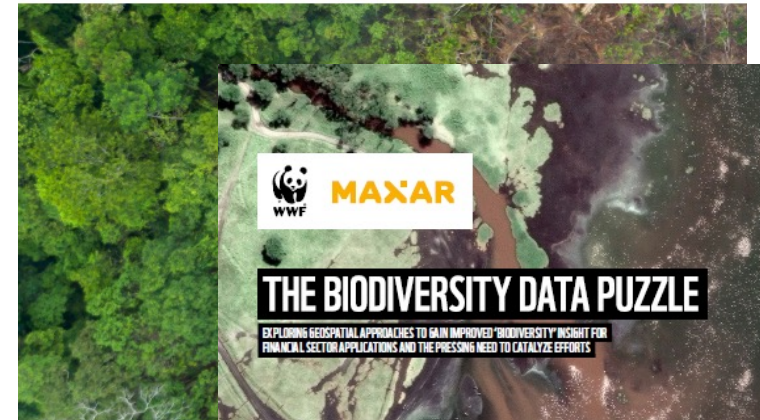
# Outcomes

- **Accelerate and amplify** companies' Deforestation Free and Restoration **corporate commitments**, brand claims and compliance with Due Diligence legislation.
- Accelerate a consistent approach to location validation to support **ESG's and green finance to remove greenwashing**.
- Enable **trust** to be built into the system to support location intelligence and transparency.
- Shine a light on the darker areas of the supply chain to help buyers and investors **disrupt and intervene**.
- Assist in **reducing** emissions, biodiversity loss and **environmental impact** of supply chains, reduce unsustainable agricultural practices and land degradation through more effective monitoring and smart procurement contracts based on the known asset location.



## GEOSPATIAL ESG

THE EMERGING APPLICATION OF GEOSPATIAL DATA FOR GAINING 'ENVIRONMENTAL' INSIGHTS ON THE ASSET, CORPORATE AND SOVEREIGN LEVEL





# Timeline

April –May  
PoC created

May-August  
PoC testing  
ESRI UC

August –Sept  
Business case  
& socialisation



COP28  
UAE

2024  
Scale up



# Conclusion

You can't solve climate without nature, and you can't solve nature without knowing the **location**.

You can't help people live sustainable lives without seeing **where** are the problems, and opportunities to act.

**GEO + EO** can provide the insight to help solve these problems and hold entities to account





# Thank you

[Donna.Lyndsay@os.uk](mailto:Donna.Lyndsay@os.uk)

[ordnancesurvey.co.uk](http://ordnancesurvey.co.uk)

SEE > BETTER PLACE

