

TECH  
mahindra





# Space+Spatial Value Chain

Space+Spatial Analytics Empowering Businesses

# Mahindra & Mahindra

Enabling multiple businesses across sectors and countries to Rise™ ...

**260K** People

**22** Industries

**100+** Countries

**150+** Companies

**11** Sectors



Aerospace



Construction Equipment



Insurance Broking



Aftermarket



Consulting



Logistics



Agri Industry



Defence



Power Backup



Automotive



Farm Equipment



Real Estate & Infra



Boats



Hospitality



Retail



Clean Energy



Information Technology



Steel



Housing Finance



Two Wheelers



Trucks & Buses



Vehicle Finance



# Tech Mahindra

We are ...

**6 BN +** Revenue

**1100+** Global Customers

**Leaders** in ESG

**145K+** People

**90+** Country



8 Of Top 10 In Automotive



2 Of Top 10 In Insurance



8 Of Top 10 In Life Science



5 Of Top 10 In Conglomerates



2 Of Top 5 In Hardware And Storage



5 Of Top 10 In Consumer Goods



6 Of Top 10 In Communications Services



2 Of Top 10 In Process Manufacturing



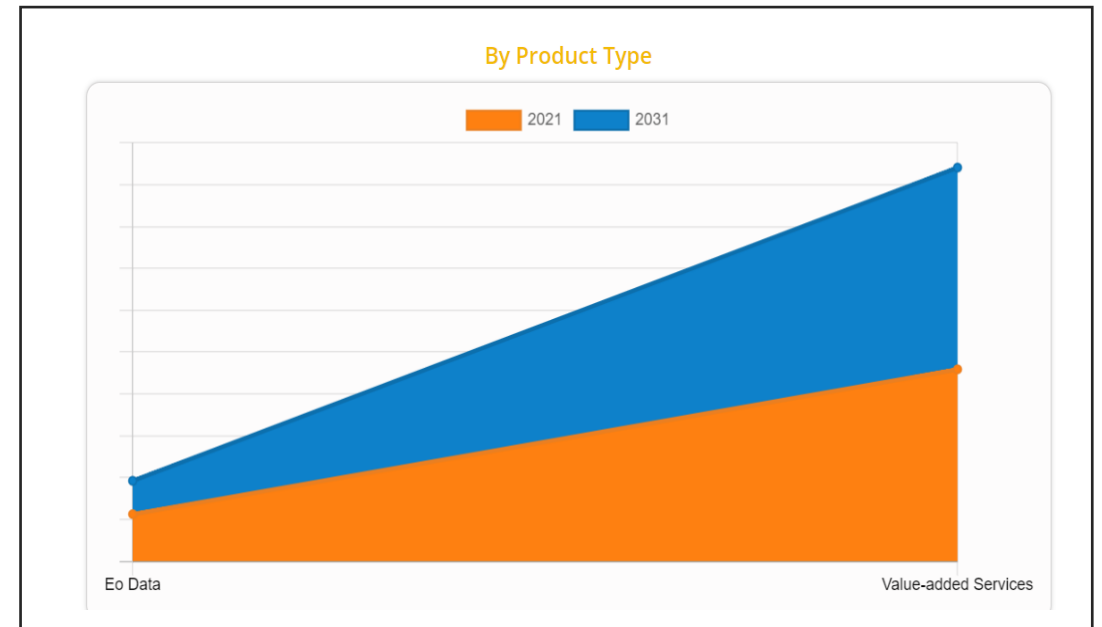
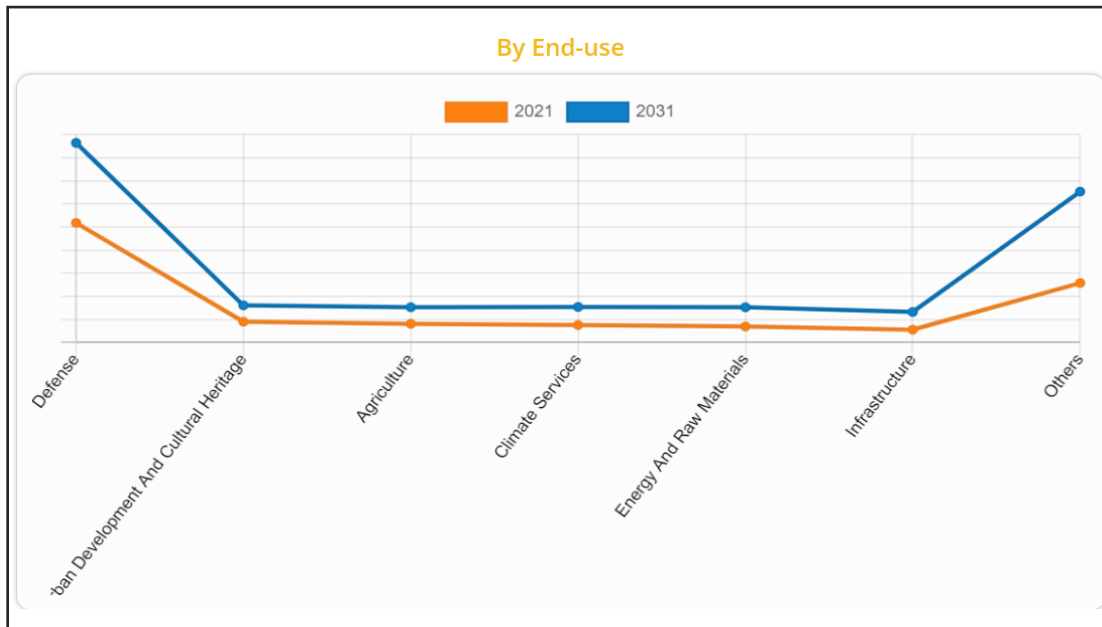
6 Of Top 10 In Healthcare Equipment



4 Of Top 10 In Oil And Gas

# SPACE LAUNCH / TECH / EO MARKET

Satellite-Based Earth Observation Market by Product Type (EO Data, Value-Added Services), by Satellite Orbit (Low Earth Orbit, Medium Earth Orbit, Geostationary orbit), by End-use (Defense, Urban Development and Cultural Heritage, Agriculture, Climate Services, Energy and Raw Materials, Infrastructure, Others): Global Opportunity Analysis and Industry Forecast, 2021-2031.



## Space Launch Service

- Market Value 2022 – USD 14.21 Billion
- Expected growth – 12.25% CAGR
- Expected value in 2029 – USD 31.90 Billion
- Courtesy --- Fortune Business Insights

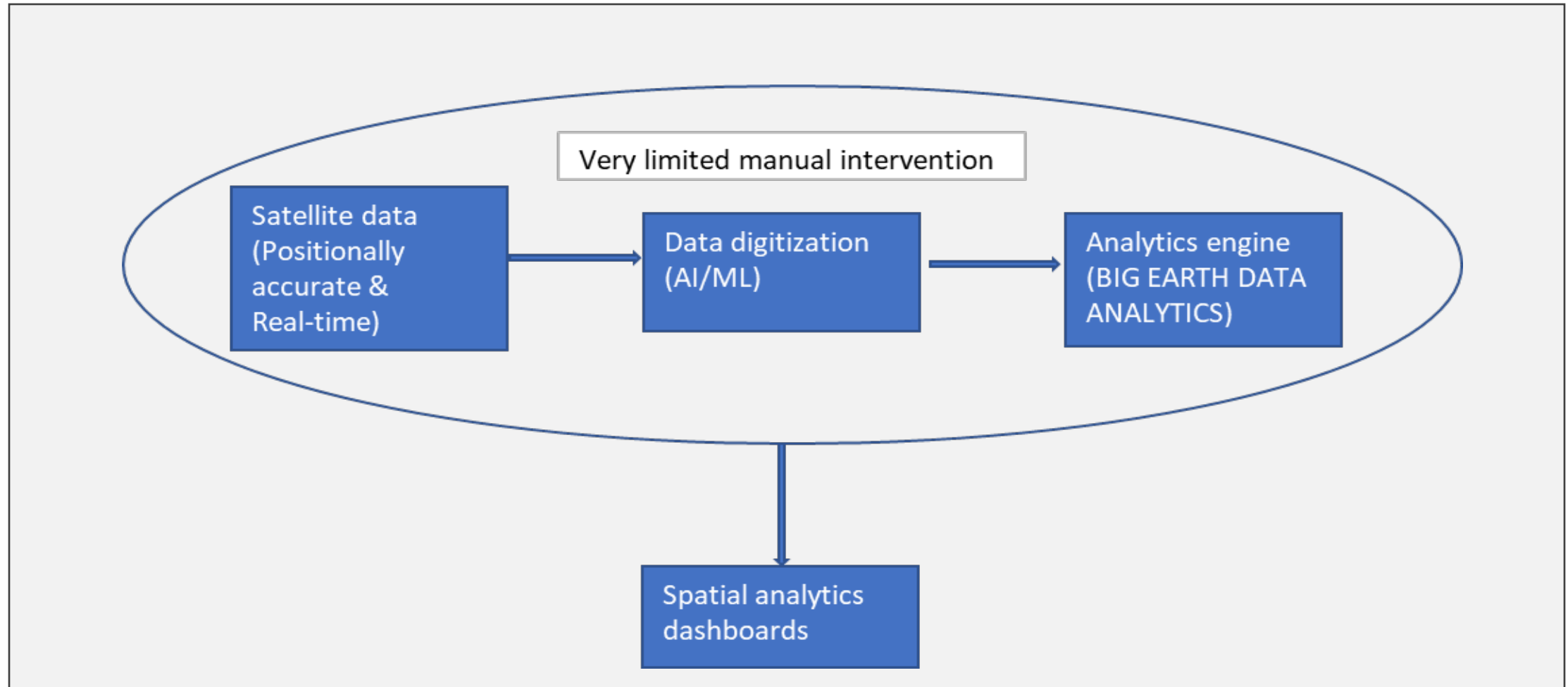
## Earth observation satellites

- Market Value 2021 – USD 5.7 Billion
- Expected growth – 7.2% CAGR
- Expected value in 2031 – USD 11.3 Billion
- Courtesy --- Allied Market Research

## Space Technology

- Market Value 2022 – USD 520 Billion
- Expected growth – 6.7% CAGR
- Expected value in 2030 – USD 875 Billion
- Courtesy --- Market Research Future

# Future Space+spatial Analytics Ecosystem





# Space+spatial Value Chain/key Sectors

LAND  
ADMINISTRATION

ENVIRONMENT AND  
CLIMATE CHANGE

AGRICULTURE AND  
FOOD SECURITY

ENERGY

DISASTER AND  
RISK MANAGEMENT

WATER RESOURCE  
MANAGEMENT & IRRIGATION



# Land Administration

- Tracking of land allotments
- Possessions identification
- Timely resolution of land acquisition issues
- Location of property
- Ownership of property
- Size and shape of each land parcel
- Trends in rents and prices
- Eliminate errors in data and parcel boundaries
- Automatic change detections





# Agriculture and Food Security

- Precision irrigation
- Plant disease identification
- Monitor fields, water supplies, temperature fluctuations
- Analyse crop varieties, field boundaries, irrigation systems
- Real-time measurement of crop production and quality
- Visualize soil moisture levels
- Track animal movements in animal husbandry
- Monitor health, growth, fertility and nutrition of livestock



# Disaster and Risk Management

- Preparedness for disaster
- Planning & Mitigation
- Response and recovery
- Building a common operating environment
- Providing live data





# Environment and Climate Change

- Observe the distribution of forests
- Map the population of different species
- Track the animals and plants to monitor their growth
- Monitor and predict wildlife movements
- Monitor the progress/status of conservation efforts



# Energy Sector

- Identify right wind and solar energy sites
- Oil, gas and mineral exploration





# Water Resource Management & Irrigation

- Water flow modeling
- Flood management
- Ground water level assessment
- Water quality assessment
- Monitor changes in stream channels



# Realtime GIS – Major Pipeline ORG in Usa

## Project needs

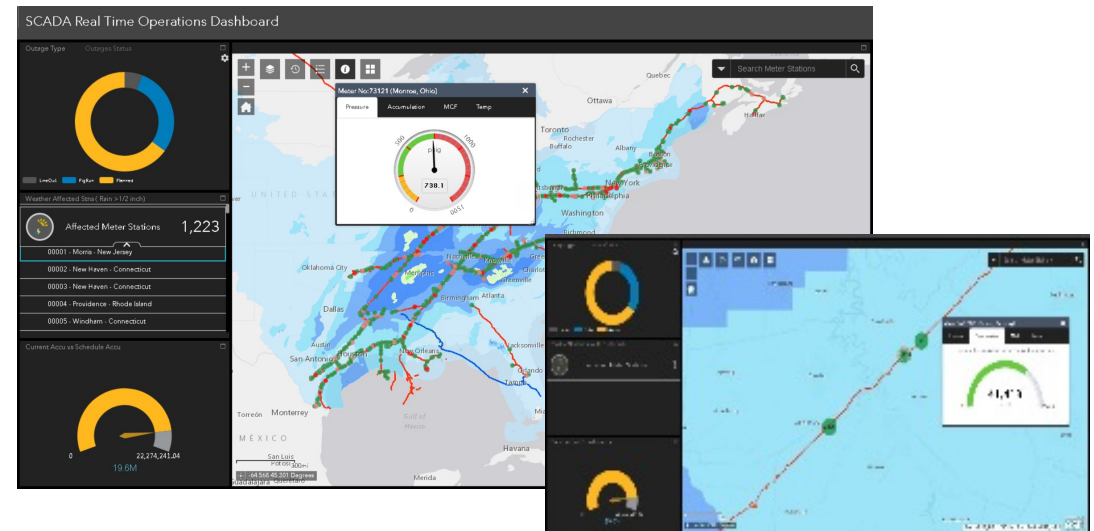
- Need to have a map integrated operations dashboard
- Integration with SCADA and other real time systems data onto GIS
- Need to analyze and visualize business data on dashboard for better business decisions and tracking
- Intuitive map interface for better user adoptability

## Benefits to customer

- Integrated view of realtime transmission data overlaid with outages, one call, weather etc.
- Realtime operations dashboards
- Increased accuracy of data pooling and charting
- Configurable dashboard based on user groups, business units
- Integral view of service calls and weather data for scheduling of tickets

## Project details

- Developed integration framework using ESRI ArcGIS Server
- Implemented UPDM with Utility Network
- Integrated SCADA data in near realtime and generated dashboards – using charts, gauges, lists and graphs
- Integrated Outages, Service KPIs, One Call locations
- Developed a configurable GIS dashboard





# Evacuation Application for an Oil&gas Major

## Project Needs

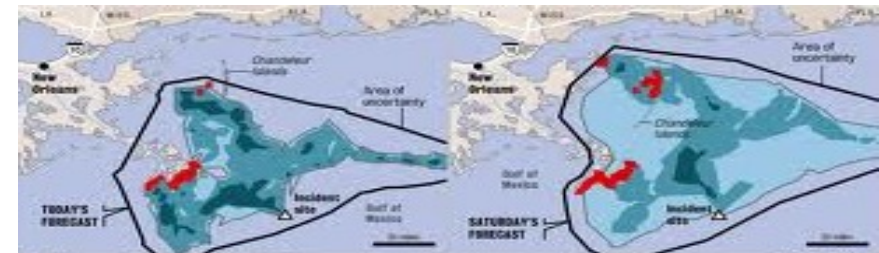
- Oil & Gas giant's assets need to be accessed by their employees across the globe based on their privilege to view, query and analyze.
- To protect the assets and for an evacuation process, predictive and impact analysis of Disaster Management Module (DMM) like Hurricanes, Earthquakes and Oil spill were the requirements

## Benefits To Customer

- Information related to Wells, production, facilities, operations, seismic, marine, pipelines, leases, etc.. can be visualized at single web GIS space.
- Disaster Analysis gives predictive report and provides required information in short duration for evacuation to save human lives and valuable assets.
- Maps exposed as services like WMS, KML and GeoRSS services

## Project Details

- The Mapping application is developed using:
- C# .NET & WCF
  - ArcGIS Server with Spatial Analyst
  - ArcGIS Server Javascript API, Angular JS
  - Oracle 11g



# Public Utilities Board (Pub), Singapore

## Project Needs

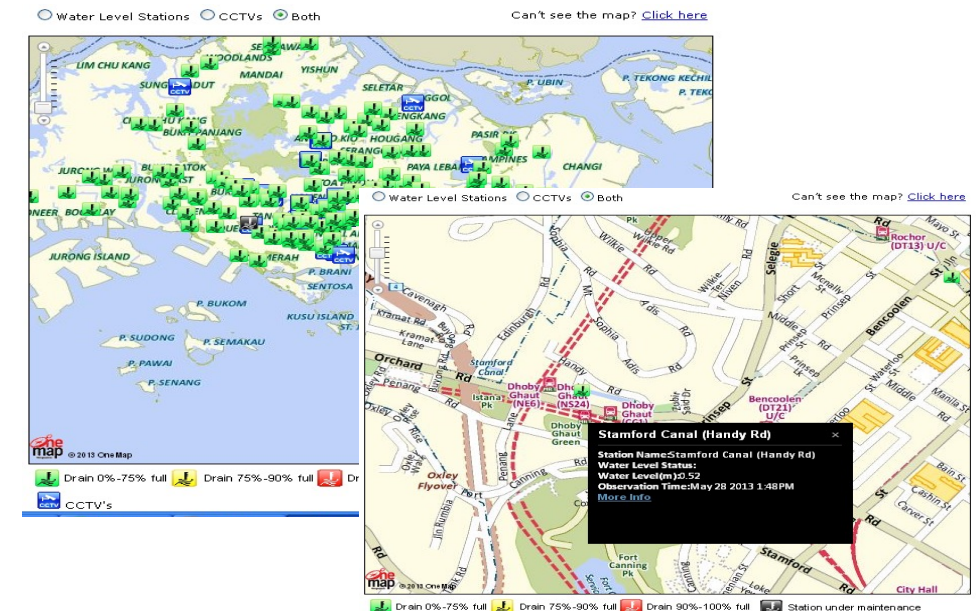
- Monitoring of water levels at realtime
- Provide a web application for citizen use
- Generate automatic alerts if water level reaches to threshold levels
- Integrate CC cameras to the application

## Benefits To Customer

- Realtime information available on dashboard
- Citizens can receive alerts instantaneously
- Reduced time to take effective decisions in case of flash floods
- Citizens can see the history of events from the same application

## Project Details

- Developed a GIS based dashboard application using ESRI ArcGIS
- Integrated realtime data captured from water level sensors
- Integration with OneMap GIS platform for base map visualization instead of Google Maps
- Integrated GIS to messaging system to generate Alerts





# Public Utilities Board (Pub), Singapore

## Project needs

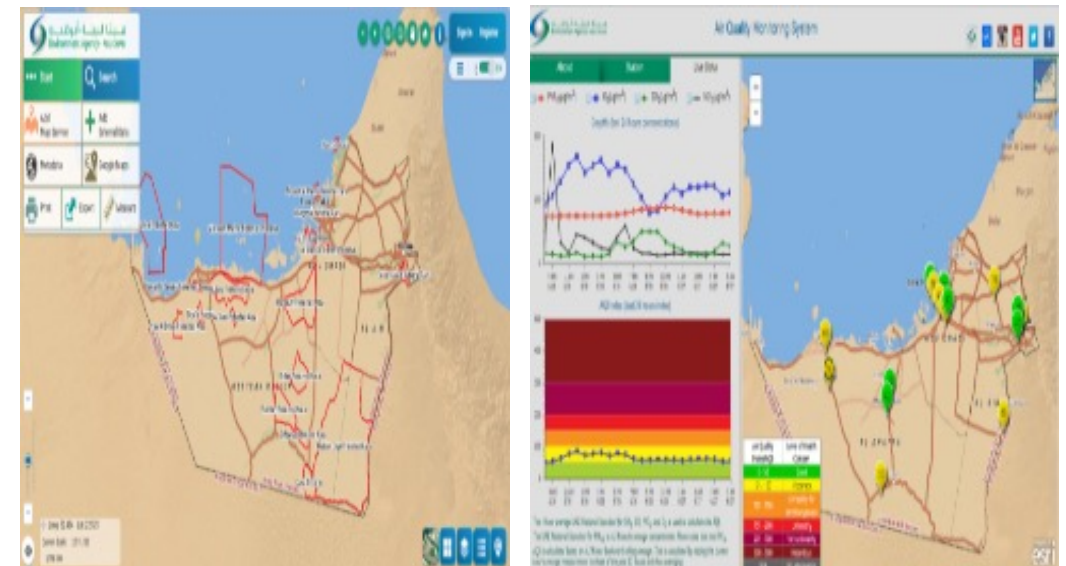
- Monitor air quality in Abu Dhabi, tracking the movement of birds using satellite telemetry
- Collect and analyze air quality data from various air quality sensors and bird tracking system implemented to automate the tracking information
- Visualization and study of birds migratory path using HTML animation

## Project details

- Developed Outlook Extension to read the mail attachments
- Implemented system to use GeoEvent Server capabilities to read and store in the Enterprise Geodatabase to make them available to GIS applications
- Developed WebGIS Application using ESRI WebApp Builder and Created Custom Widgets to Project Specific Requirements
- Apart from telemetry, the application also has functionalities like geofencing of protected area, hot spots and heat maps. It also enable users to visualize tracking of data time series wise.

## Benefits to customer

- Reduced dependencies in data sharing/data processing by automation of different data sources to Enterprise GIS
- Dynamic Visual Representation in WebGIS Application
- Improve GIS system availability and stability
- Improve utilization of systems resources
- Maintain and evolve a coordinated approach to GIS
- Dashboard to monitor and quick decision making





# Thank You

## Disclaimer

The information is to be treated as Tech Mahindra Confidential Information. TechM provides a wide array of presentations and reports, with the contributions of various professionals. These presentations and reports may be for information purposes and private circulation only and do not constitute an offer to buy or sell any services mentioned therein. They do not purport to be a complete description of the market conditions or developments referred to in the material. While utmost care has been taken in preparing the above, we claim no responsibility for their accuracy. We shall not be liable for any direct or indirect losses arising from the use thereof and the viewers are requested to use the information contained herein at their own risk. These presentations and reports should not be reproduced, re-circulated, published in any media, website or otherwise, in any form or manner, in part or as a whole, without the express consent in writing of TechM or its subsidiaries. Any unauthorized use, disclosure or public dissemination of information contained herein is prohibited. Individual situations and local practices and standards may vary, so viewers and others utilizing information contained within a presentation are free to adopt differing standards and approaches as they see fit. You may not repackage or sell the presentation. Products and names mentioned in materials or presentations are the property of their respective owners and the mention of them does not constitute an endorsement by TechM. Information contained in a presentation hosted or promoted by TechM is provided "as is" without warranty of any kind, either expressed or implied, including any warranty of merchantability or fitness for a particular purpose. TechM assumes no liability or responsibility for the contents of a presentation or the opinions expressed by the presenters. All expressions of opinion are subject to change without notice.