



S4G Introduction & Forest Beyond Borders project

*“Earth Observation for Social &
Environmental Impact”*

Federico Franciamore
GIS & RS Specialist/Project Leader
federico@space4good.com



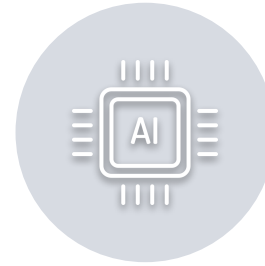
Providing geospatial solutions to unlock, accelerate and scale social and environmental impact for good



Remote Sensing



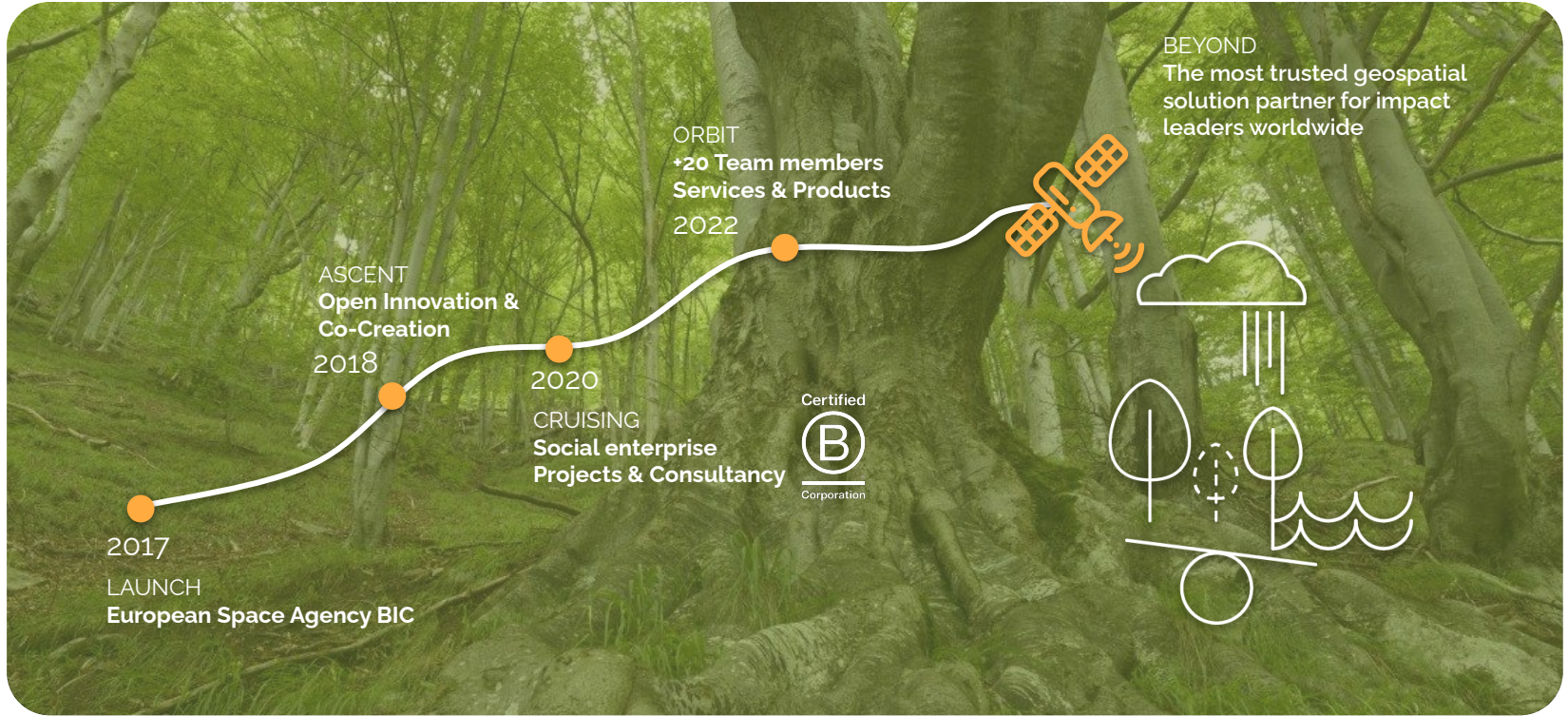
Geoinformation



Artificial Intelligence



Our Journey





Remote sensing data



Geospatial data analytics



Models & Predictions



Monitoring & Reporting



Products & Bespoke Solutions



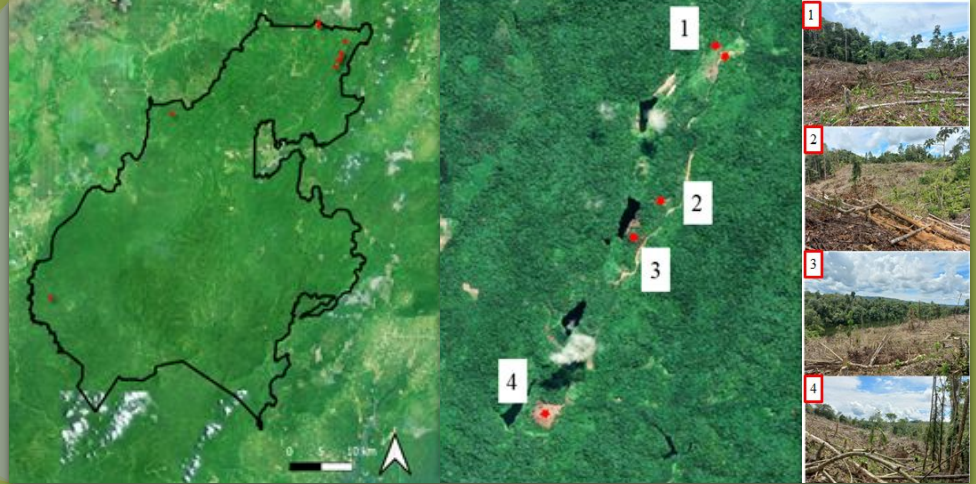
Platforms & APIs



Capacity Building



Deforestation



Solution:

Illegal logging detection & prediction

Context:

Mixed tropical agroforestry

Data & Tech:

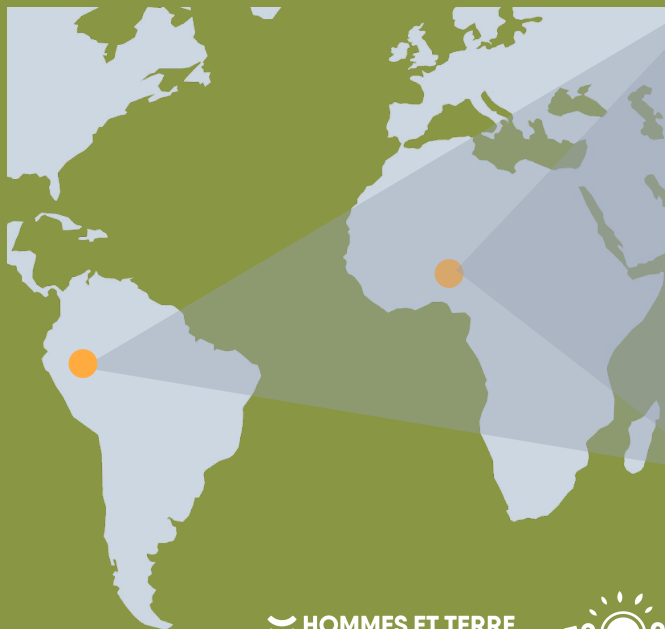
Radar & Optical Satellite Data with machine learning

Output:

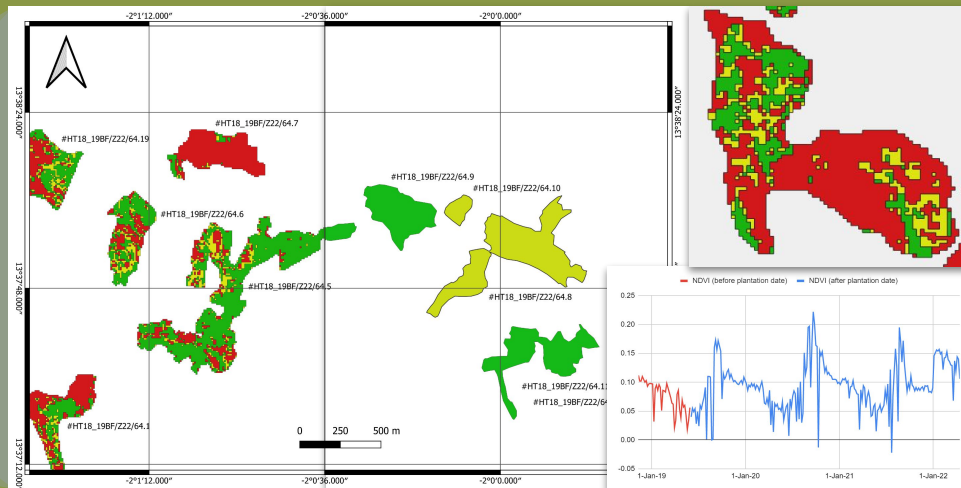
Near real time alerts & predictions



Afforestation



 **HOMMES ET TERRE**
developing forests



Solution:

Remote sensing-based afforestation mapping using veg indices

Context:

Mixed tropical agroforestry farms - monocropping

Data:

Vegetation Indices from radar and optical satellite data

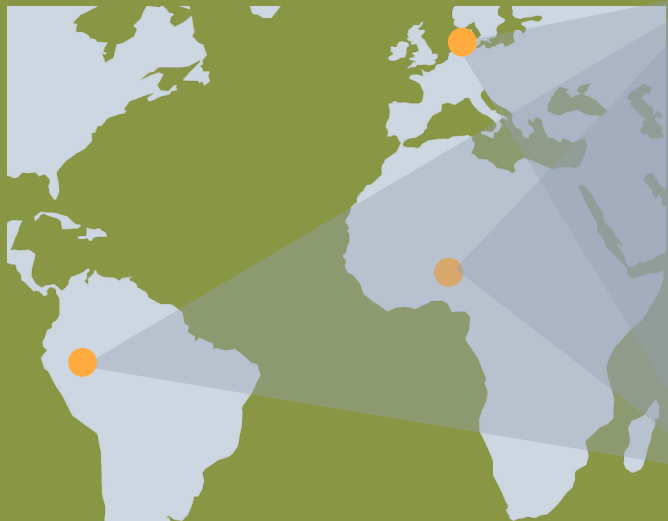
Users:

Afforestation entities

Output:

Within sites and overall classification

Carbon Market



Solution:

Remote sensing-based biomass assessments

Context:

Mixed tropical agroforestry farms

Data:

Radar satellite data & LIDAR

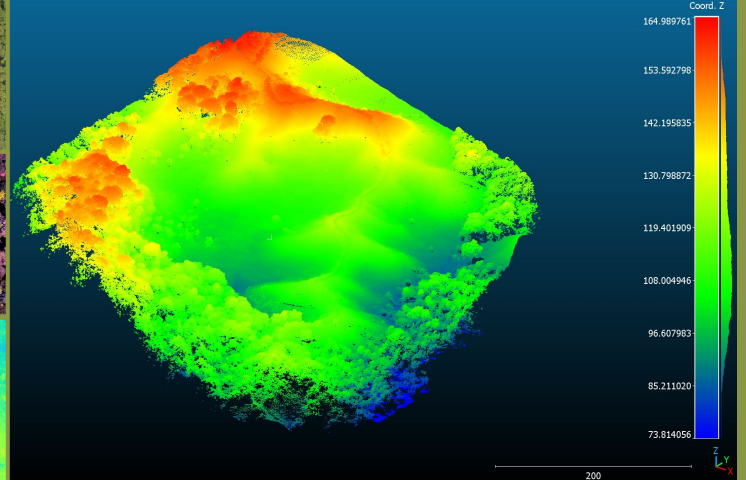
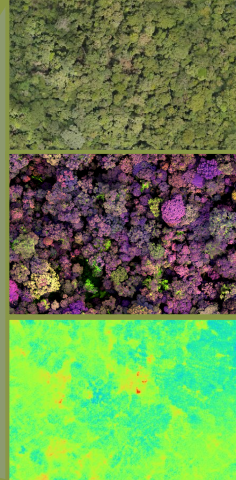
Users:

Project developers & Operators

Output:

Carbon sequestration report for carbon credits

Biodiversity



Solution:

Remote sensing-based biodiversity monitoring

Context:

Rainforest ecosystems

Data:

Multispectral, LIDAR and thermal drone data and in-situ info

Users:

Conservationists, Project developers, Investors

Output:

Tree species distribution maps

euRONATUR SPACE4GOOD

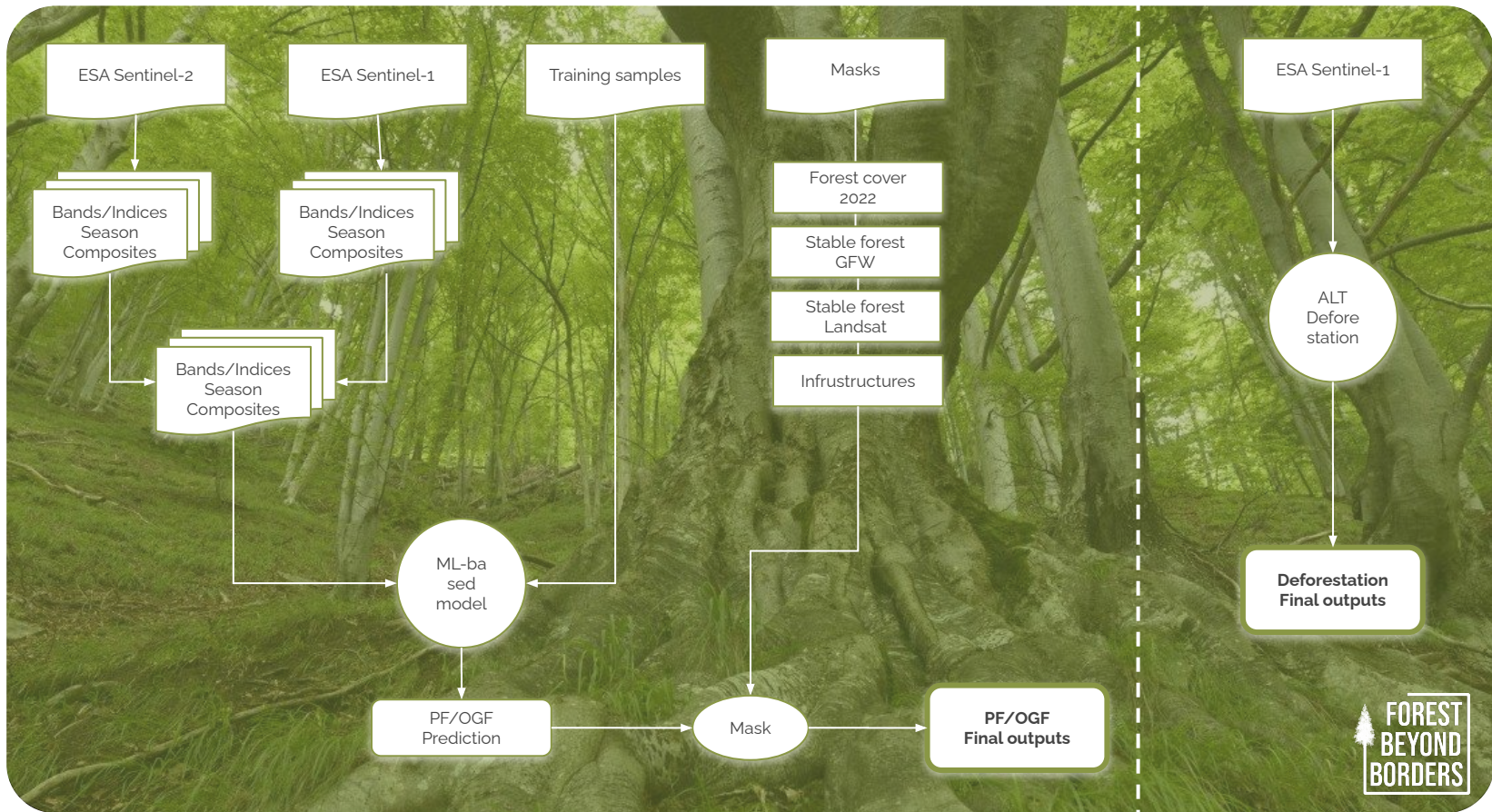


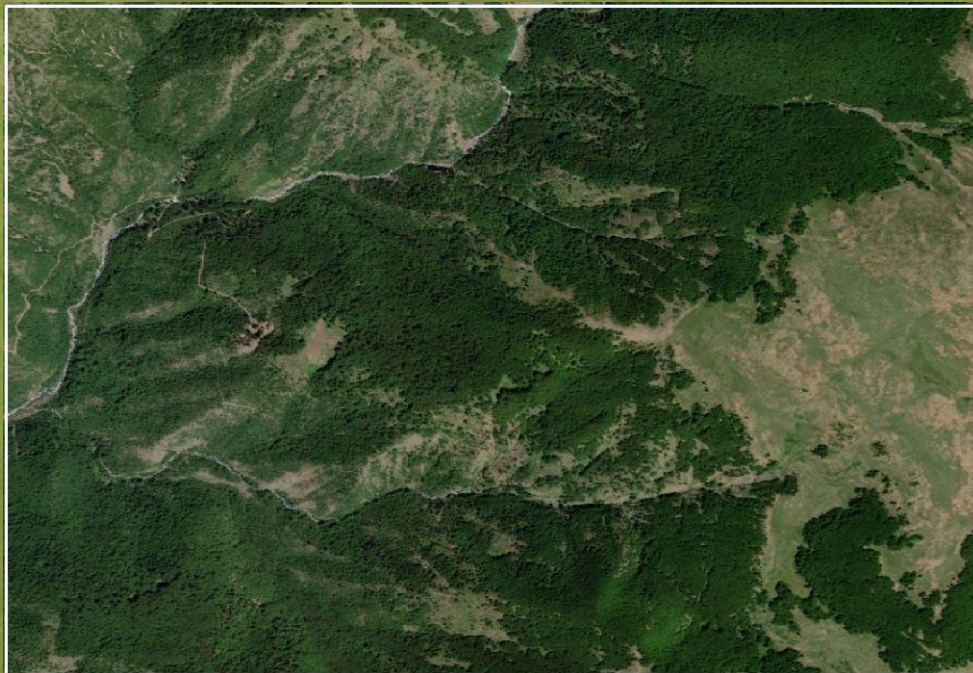
FOREST BEYOND BORDERS

Protecting Europe's primary and old-growth forests in the Western Balkans



FBB Workflow

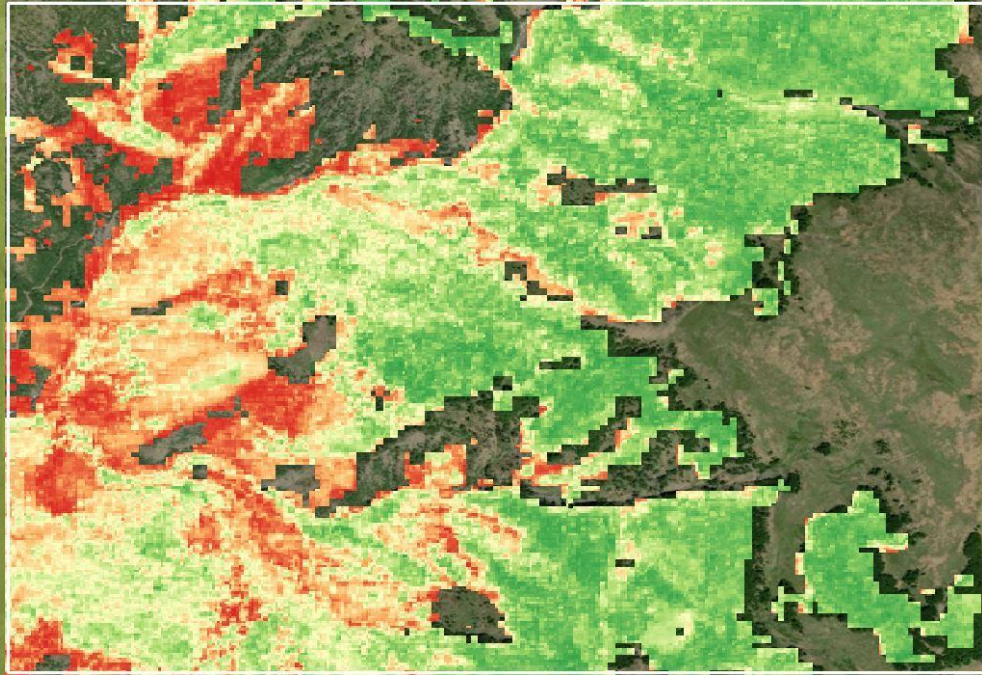




Google Satellite Basemap



FBB Results



PF/OGF Prediction map

Low  High



SPACE4GOOD

GWF 2023

By the end of the project, maps will be available that visualize PF/OGF located in the Western Balkans, so to:

- give tangible, quantifiable information to NGOs and all interested stakeholders
- provide important insights into the health and status of these ecosystems
- contribute to the protection of these forests by raising awareness among local communities
- provide these countries data & tools to request the protection of these areas according to higher European organisations and initiatives such as Natura 2000 and Unesco World Heritage.



Blog Post Link







"Earth Observation for Social & Environmental Impact"

Reach Us

www.space4good.com

✉ hello@space4good.com

☎ +31 (0) 6 41 78 48 99

📍 The Humanity Hub
Fluwelen Burgwal 58, 2511 CJ
Den Haag, The Netherlands