

*Geospatial Caravan: Embracing One & All*  
**GEOSPATIAL IMPACT IN  
PLANTATION INDUSTRY**

**GEOSPATIAL WORLD FORUM 2023**  
2<sup>nd</sup> May 2023

**2 CENTURIES  
OF LEADERSHIP**  
[www.simedarbyplantation.com](http://www.simedarbyplantation.com)

**200**  
OLDER. WISER. BETTER  
EST. 1821

**Sime  
Darby**  
Plantation

# Sime Darby Plantation is an Integrated Plantation Company Involved in the Entire Palm Oil Value Chain



Market Capitalisation

**RM32.16 bil**

As at 31 Dec 2022

Revenue

**RM18.70 bil**

For the Financial Year Ended 31 Dec 2021

PATAMI

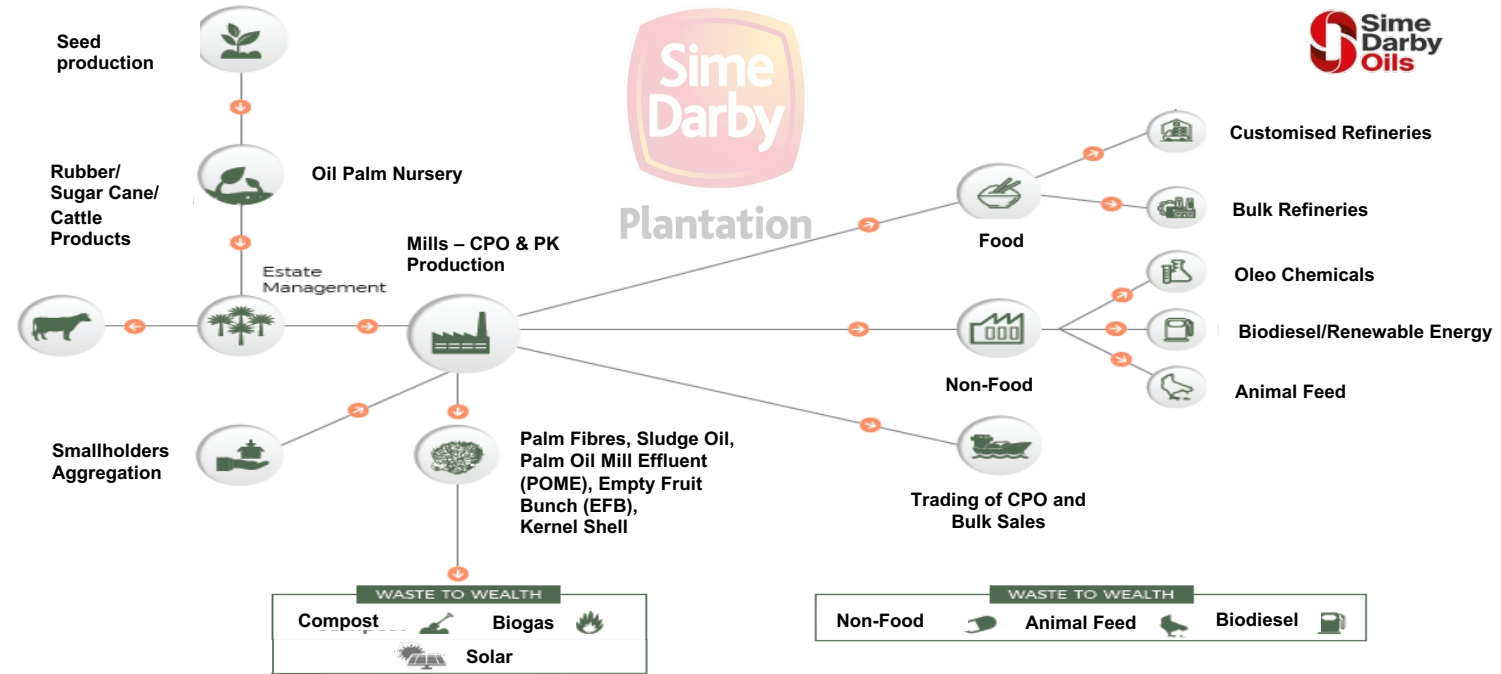
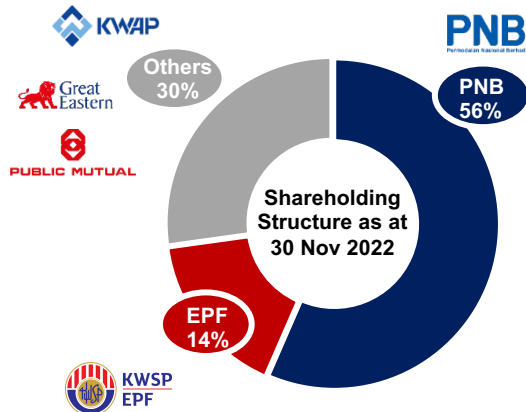
**RM2.26 bil**

For the Financial Year Ended 31 Dec 2021

Employees

**Over 84,000**

As at 30 Nov 2022



## Business Snapshots



**606,861 Ha** of planted area\*

(\*Oil palm, rubber, sugar cane and grazing pastures)



**12 countries** of SDP business presence



**3.98 mil MT/year** of refining capacity



Largest producer of CSPO

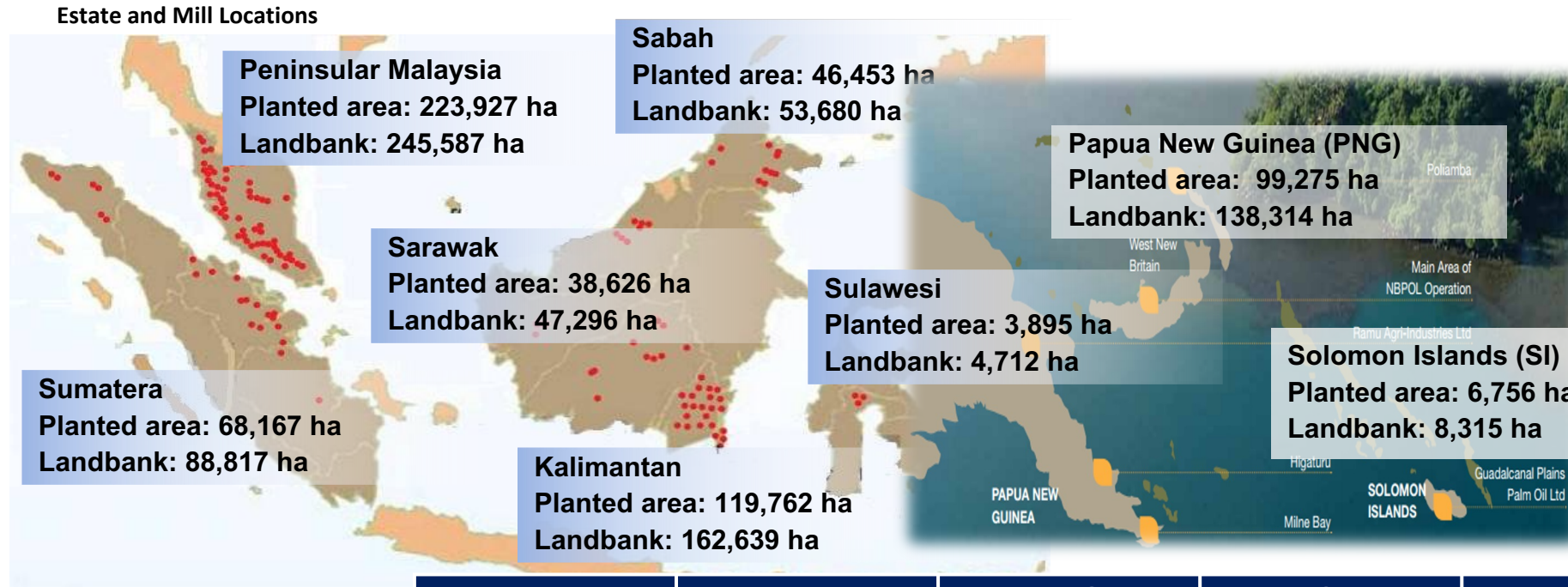


Leader in Digitalisation/  
Emerging technologies



Plantation

# Our Upstream Coverage



	Malaysia	Indonesia	PNG	SI	Total
<b>Number of Estates</b>	121	64	51	3	239
<b>Number of Mills</b>	34	23	12	1	70
<b>Number of SOUs/Groups</b>	33	22	5	1	61
<b>Concession/Title Area (ha)</b>	346,562	256,169	138,314	8,315	<b>749,360</b>
<b>Oil Palm Planted Area (ha)</b>	296,993	191,825	84,135	6,756	<b>579,708</b>
<b>Rubber Planted Area (ha)</b>	12,013	-	-	-	<b>12,013</b>
<b>Sugarcane Planted Area (ha)</b>	-	-	5,637	-	<b>5,637</b>
<b>Grazing Pastures Area (ha)</b>	-	-	9,503	-	<b>9,503</b>

- Malaysia:
  - SOU Seri Intan/Selaba has 2 mills and the rest have one - Seri Intan and Selaba mills

Note: Info as of Dec 2021

Source: SAP-BI, NBPOL Statistical Progress Report, Upstream Corporate

- Indonesia:
  - Excludes another 42,969.27 ha of Smallholders
  - SOU Manggala has 2 mills and the rest have one - Manggala and Alur Dumai mills

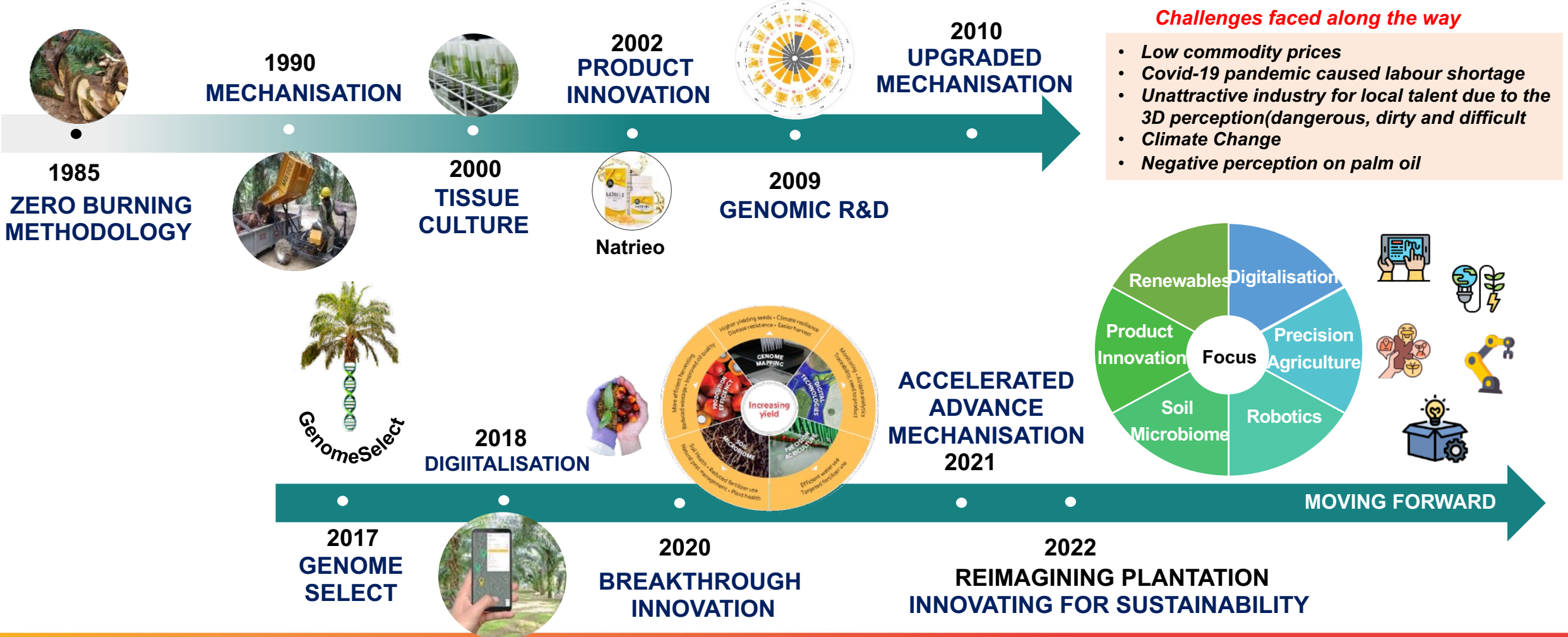
- Papua New Guinea:
  - Includes 9,503 ha of grazing pastures and 5,637 ha of sugarcane
  - Excludes another 39,178 ha of Smallholders

# Our innovation journey through the years




**Innovation Driving Change: A purpose driven innovation roadmap that inspires and encourages continuous involvement in innovation**

SDP's continued success is founded on resilience, adaptability and dynamism. From industry leading genetic seed technology to cutting edge innovation in the fields, Sime Darby Plantation is changing the face of the plantation sector.











**Power App**





ArcGIS Pro

**Web Apps**

 Map Viewer	 App Builder	 Experience Builder
 Scene Viewer	 Story Map	 Operation Dashboard

**Analytic Apps**

 Maps for Office	 Maps for PowerBI
 Business Analyst	 Insights

**Field Apps**

 Field Maps	 Survey 123
 Workforce	 Navigator

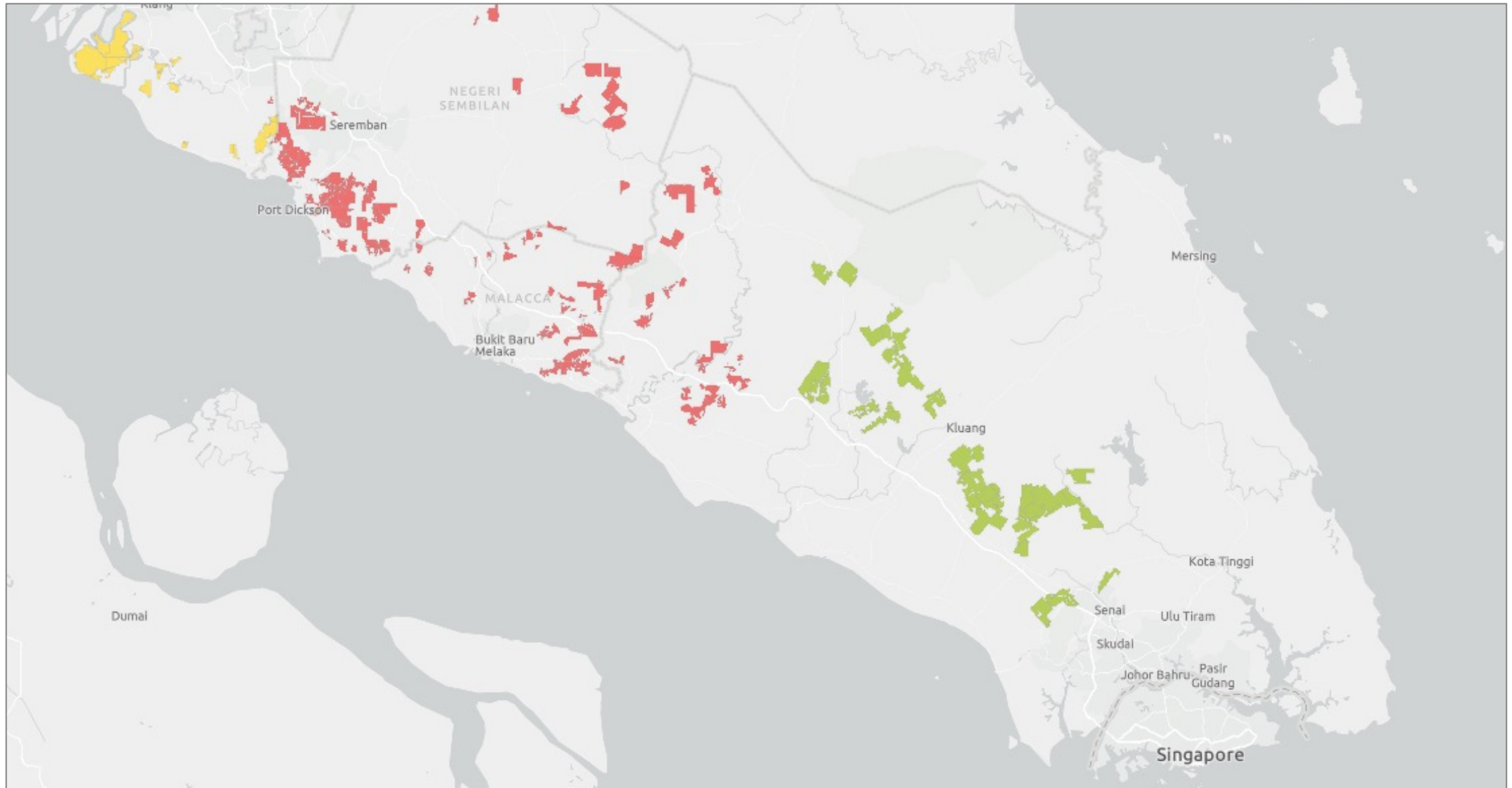


# Mapping & Survey + Census & Detection

Palm Counting ~ 40,000,000 palms via Satellite & Drone Imagery

200  
OLDER. WISER. BETTER  
EST. 1821

Sime  
Darby  
Plantation



# Mapping & Survey + Census & Detection

Palm Counting ~ 40,000,000 palms via Satellite & Drone Imagery

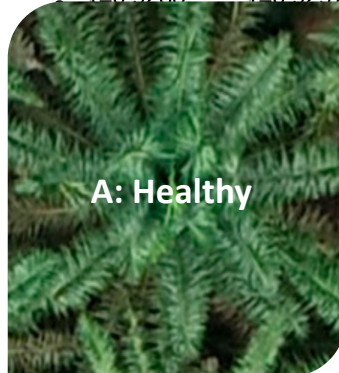
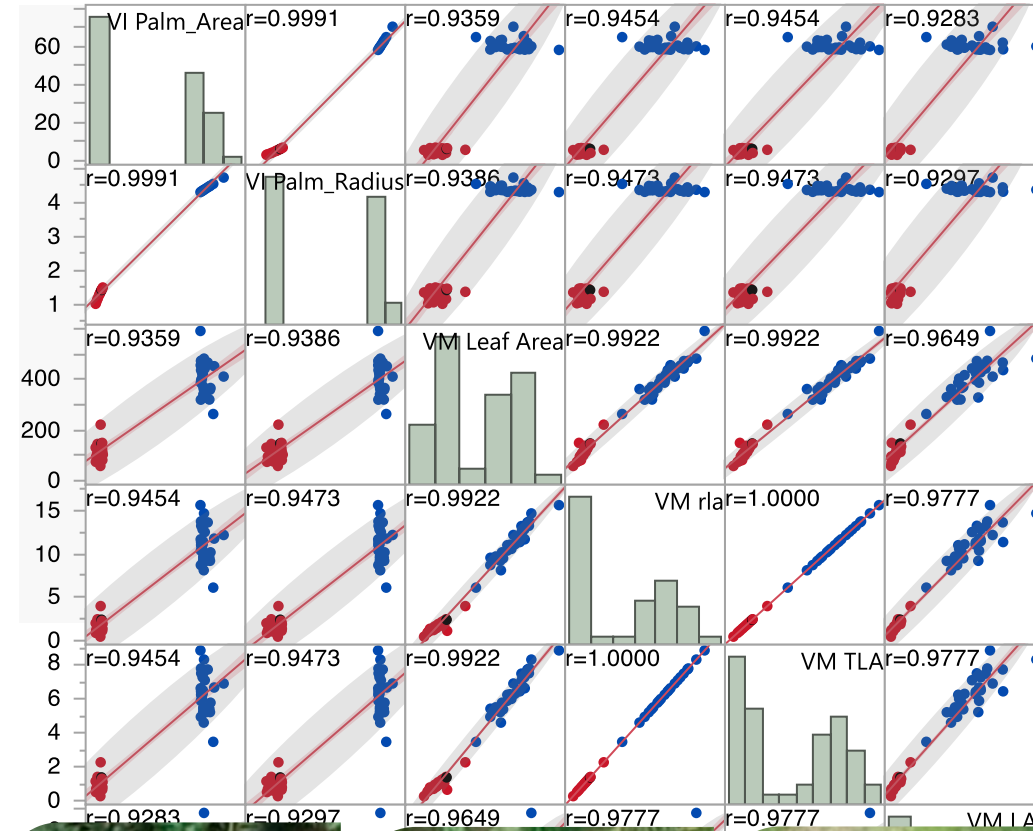
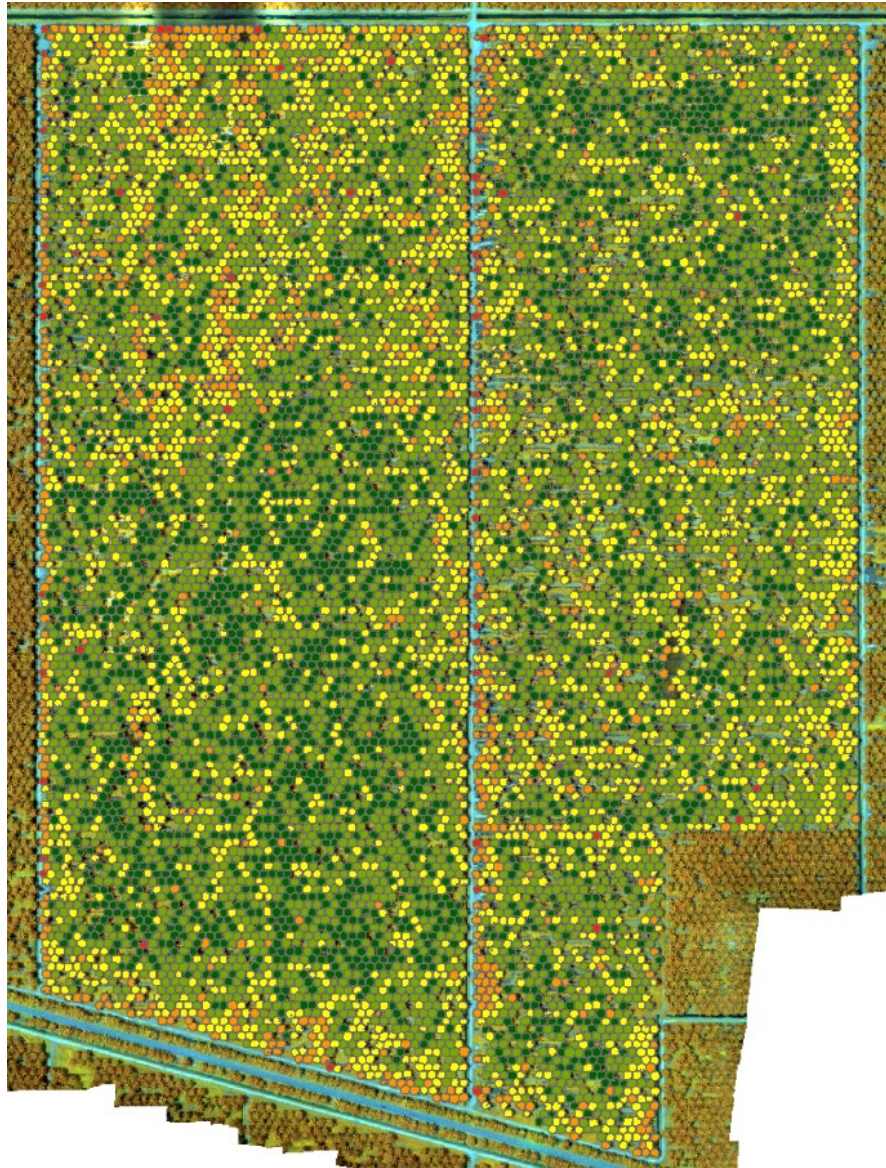
200  
OLDER. WISER. BETTER  
EST. 1821

Sime  
Darby  
Plantation



# AI/ML & Cloud Computing Powering Analytics

200  
OLDER. WISER. BETTER  
EST. 1821

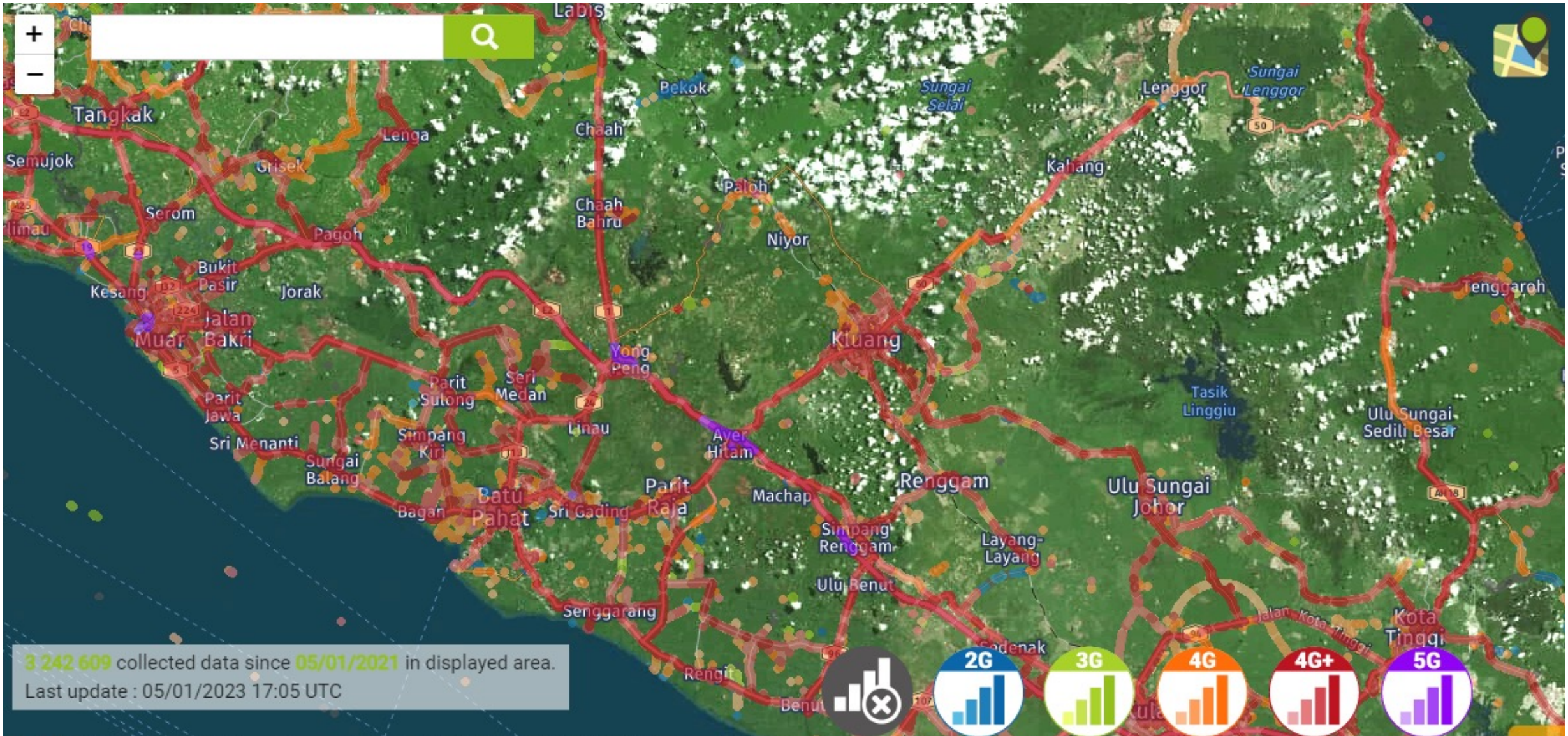




# Action Drone for "Implementation"



# Broadband Coverage in Agri-Region



# Integrated Location Intelligence Platform to improve operational insights

*Dashboards + MobileApps*



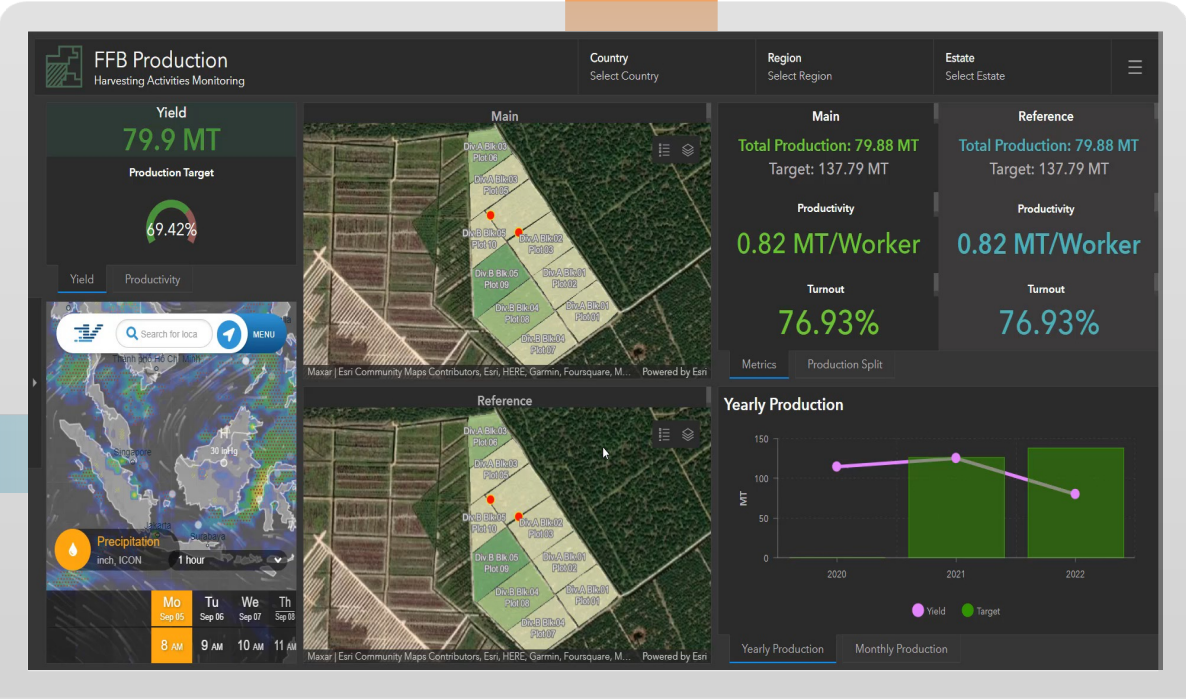
**Estate Operation**

**Research Development**

**Sustainability**

**Land Development**

**IT & Finance**

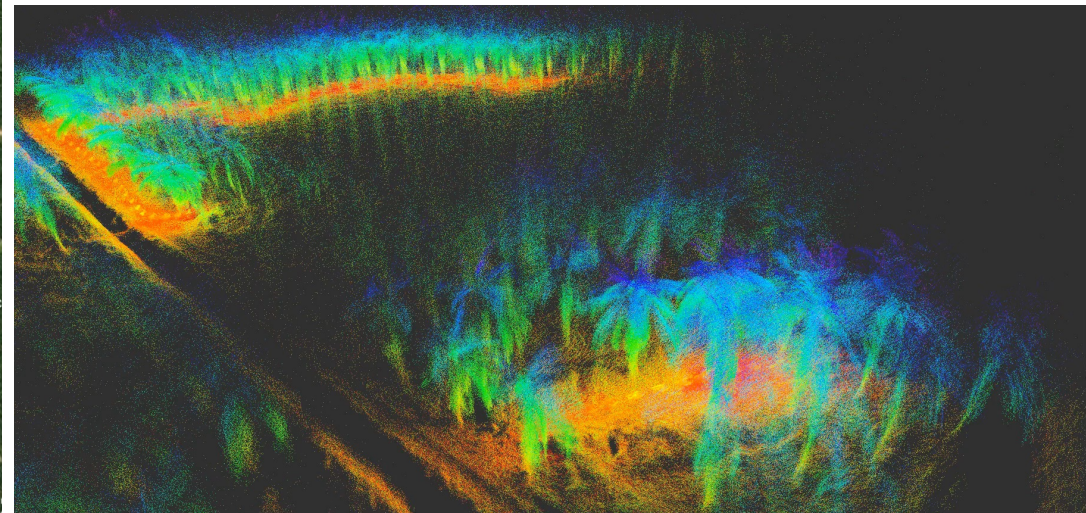
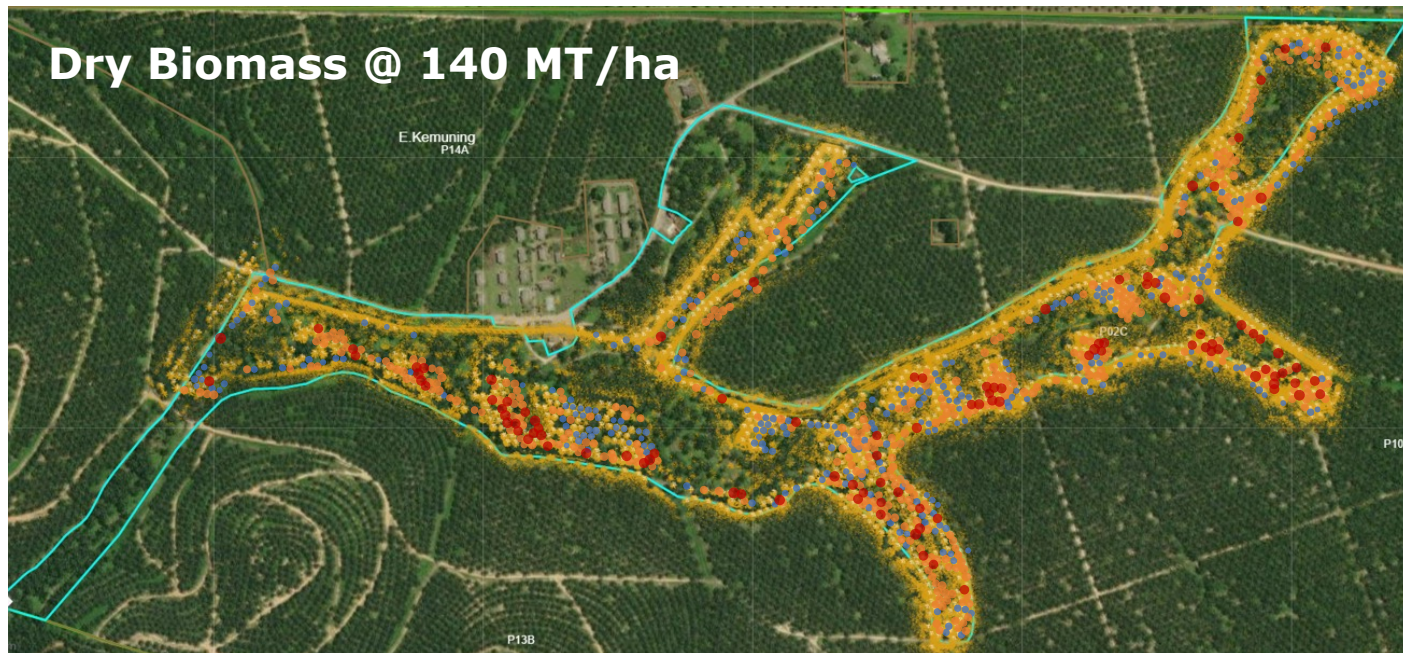
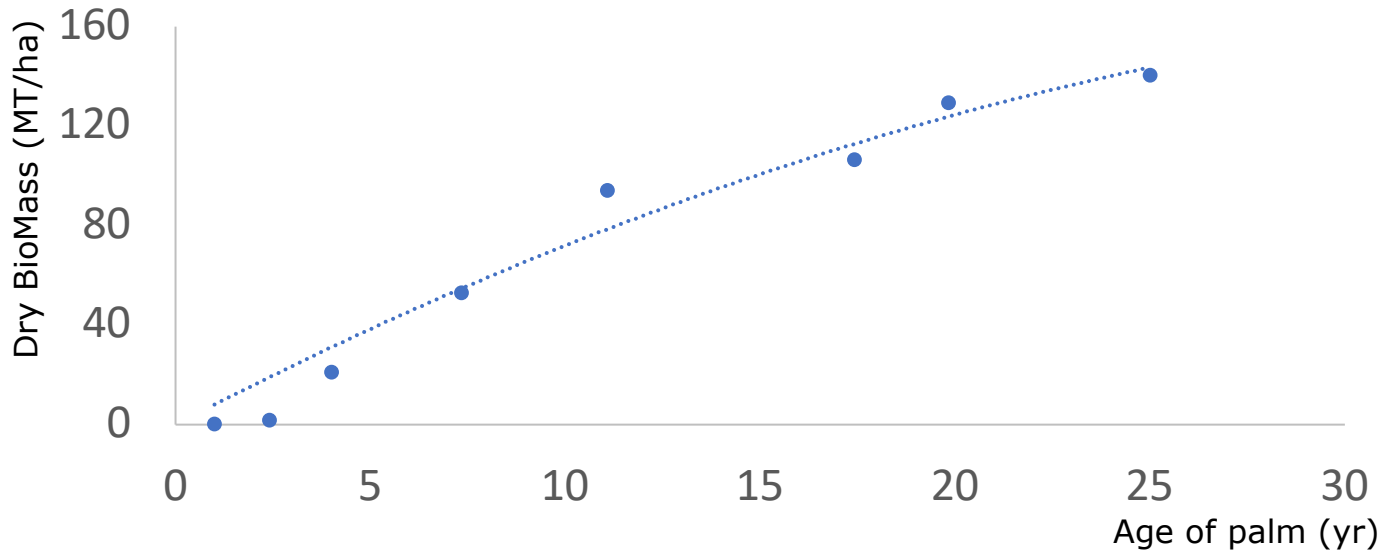


## Anything & Everything in One Common Picture

Why?

- Common Understanding
- Communicate & Collaborate
- Unified Decision-Making

# Carbon Storage Mapping with LIDAR



# Precision Agriculture @Scale

Open Innovation: Multi strategic approach with external parties



**COLLABORATION WITH ACADEMIC**  
POC and prototype development research by leveraging on specific technical area



**CO-DEVELOPMENT WITH START-UP**  
Engagement with local and foreign start-ups for POC or prototype development



**TECHNOLOGY DEPLOYMENT WITH SERVICE PROVIDER**  
Technology roll out using contract service model



**INNOVATION ECOSYSTEM**

**OPEN INNOVATION PLATFORM**  
Technology scouting via subscription to open platform or engagement with innovation scouting firm



**PARTNERSHIP WITH CORPORATE & AGENCY**  
Nurturing start-ups ecosystem by providing platform and access for POC and co-development

