



High resolution (hyperspectral) seafloor data

Hannah Brocke, Co-founder & CSO

WGIC, 05.05.2023

uplink

The open innovation platform
of the World Economic Forum

Top
Innovator



Climate-KIC is supported by the
EIT, a body of the European Union



SUSTAINABLE OCEAN ALLIANCE



This work has received funding from the European Union's
Horizon Europe research and innovation programme under
grant agreement No 190175727.



European Union
Investing in Bremen's Future
European Regional
Development Fund



Vereinte Nationen Dekade
der Meeresforschung
für nachhaltige Entwicklung





Planblue adds speed, precision and scalability to in-situ mapping

Improving benthic habitat mapping is key to the sustainable development of the Blue Economy.

We provide a step change in ground-truthing hydrographic, aerial and satellite data.

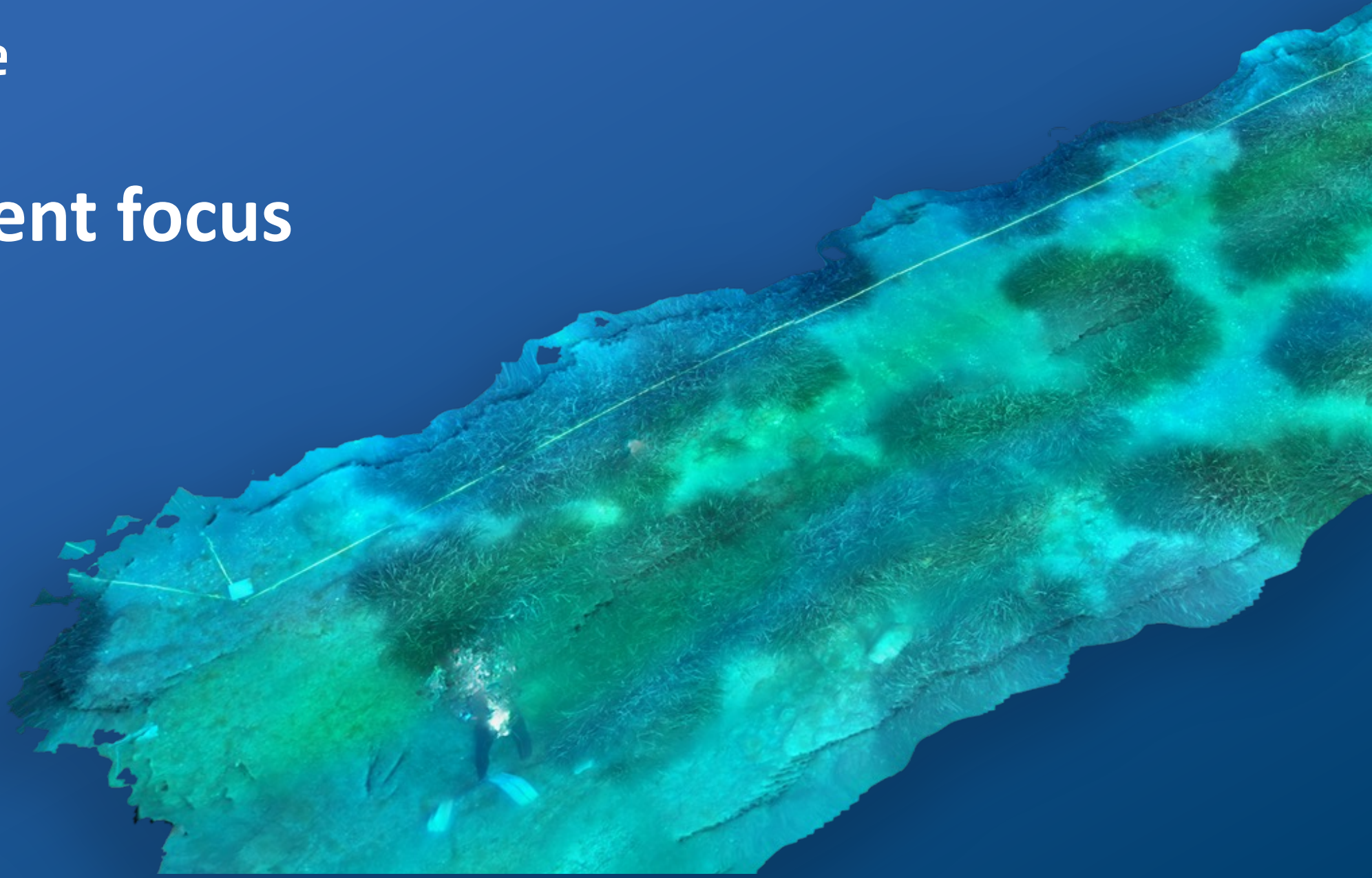
While remote sensing technologies have achieved much, **in-situ (or near in-situ) observation has lagged behind.**

We unlock blue nature-based solutions and improve traditional benthic habitat monitoring.



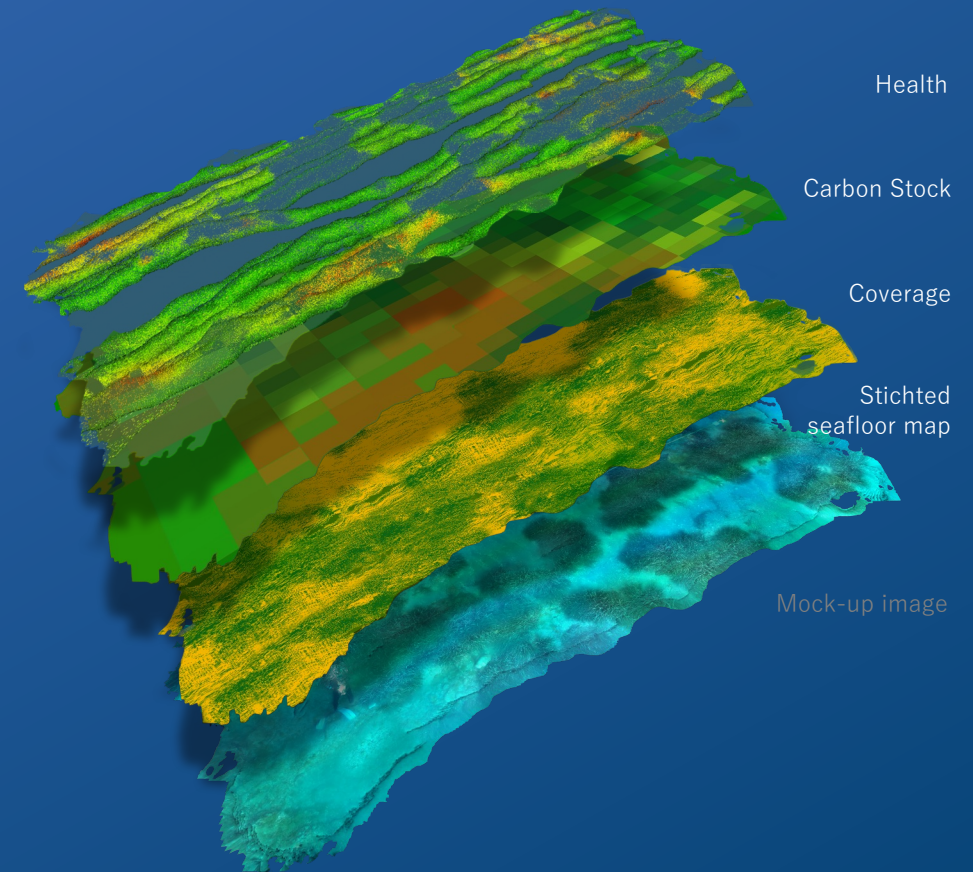


Our current focus



Our current focus:

- **Our first products:** Orthoimagery, + Seagrass coverage, Carbon Stock & Health Indices, are being marketed; new product development is purely customer-driven
- **Survey platform becomes independent** and is no longer diver-operated
- **Developing data fusion** with "external" survey data
- **Series A funding round**



Our next steps:

- Gathered data can reveal more information
- Data gathered today, will be currency in future
- Underwater hyperspectral imaging can be used to assess biodiversity.
- Why biodiversity important?
 - Resource management
 - Risk analyses
 - Decision making



Thank you!



Hannah Brocke

Co-founder & CSO

h.brocke@planblue.com

www.planblue.com