

Hydrography and Maritime

Theme: Geo-information Enabling
Blue Economy and Maritime Security

#GWF2023

STRATEGIC SPONSORS



CORPORATE SPONSOR



ASSOCIATE SPONSORS



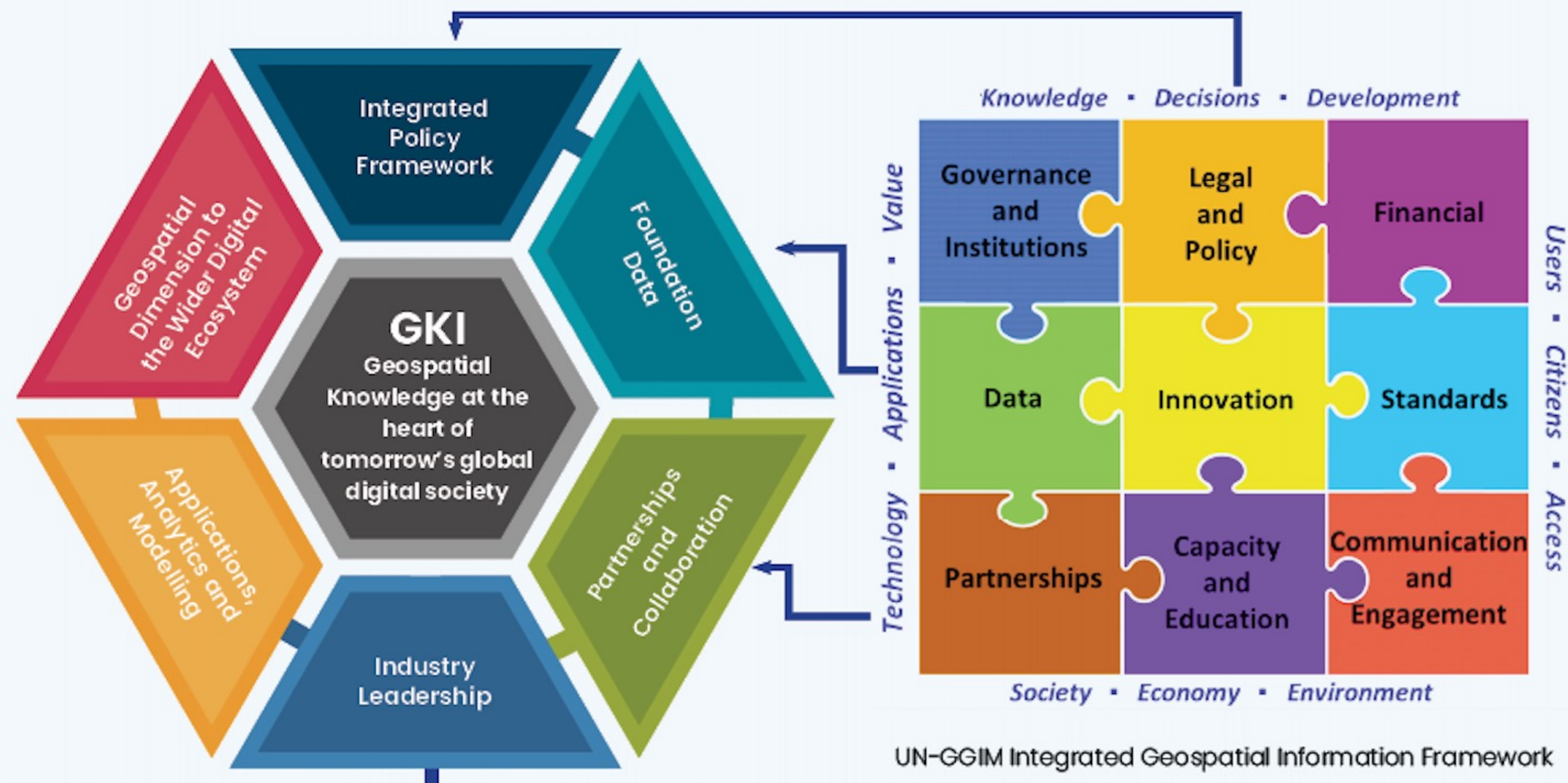
CO-HOST



PRODUCED BY



GEOSPATIAL KNOWLEDGE INFRASTRUCTURE (GKI) ENABLING SUSTAINABLE NATIONAL DEVELOPMENT



User Industry Focus



Energy Transition



Transport & Infrastructure



Autonomous Driving



Land Administration



Logistics and Supply Chain



Cities

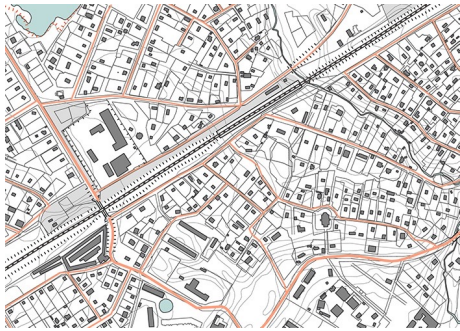


Public Safety and Security



Agriculture

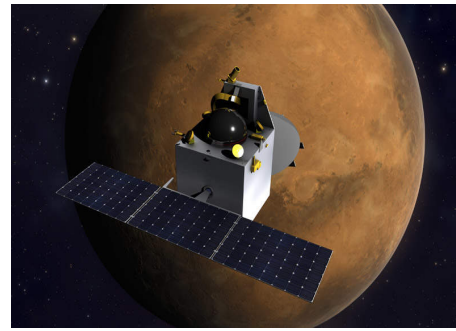
National Geospatial Agencies



Topographic Survey



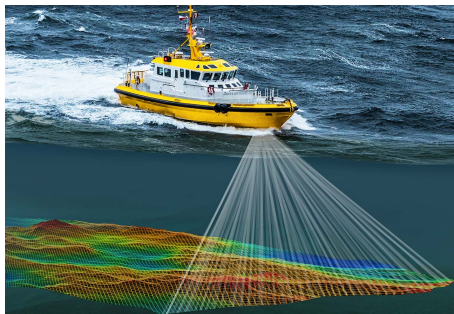
Land & Cadastre
Agency



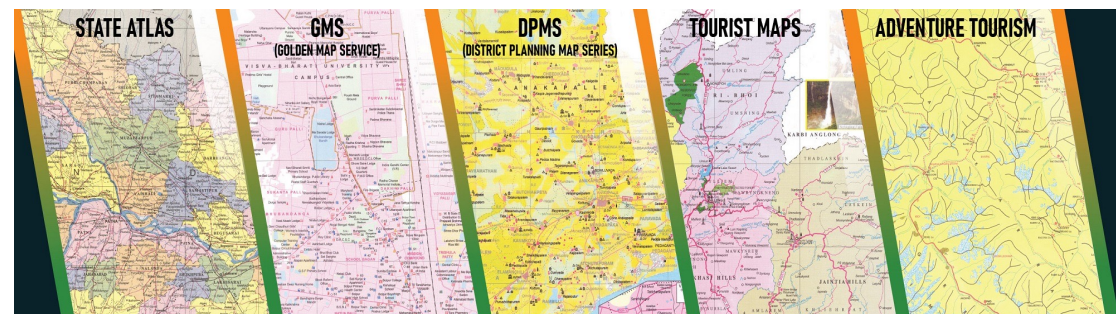
Space Agency



Geological Survey

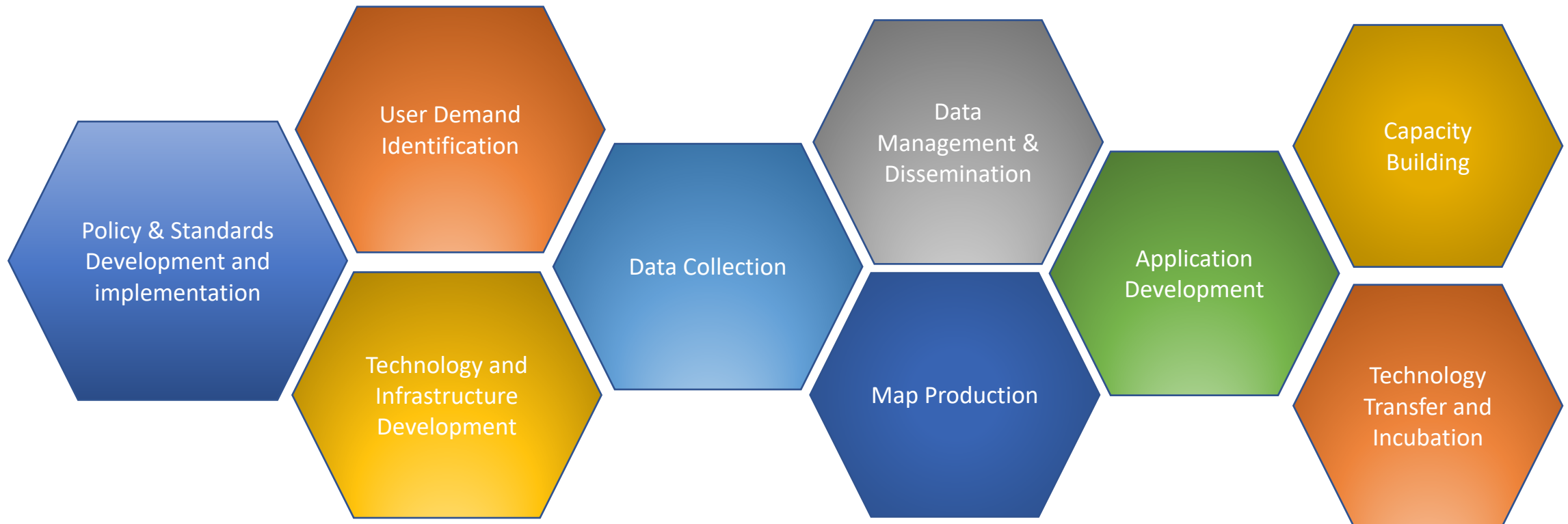


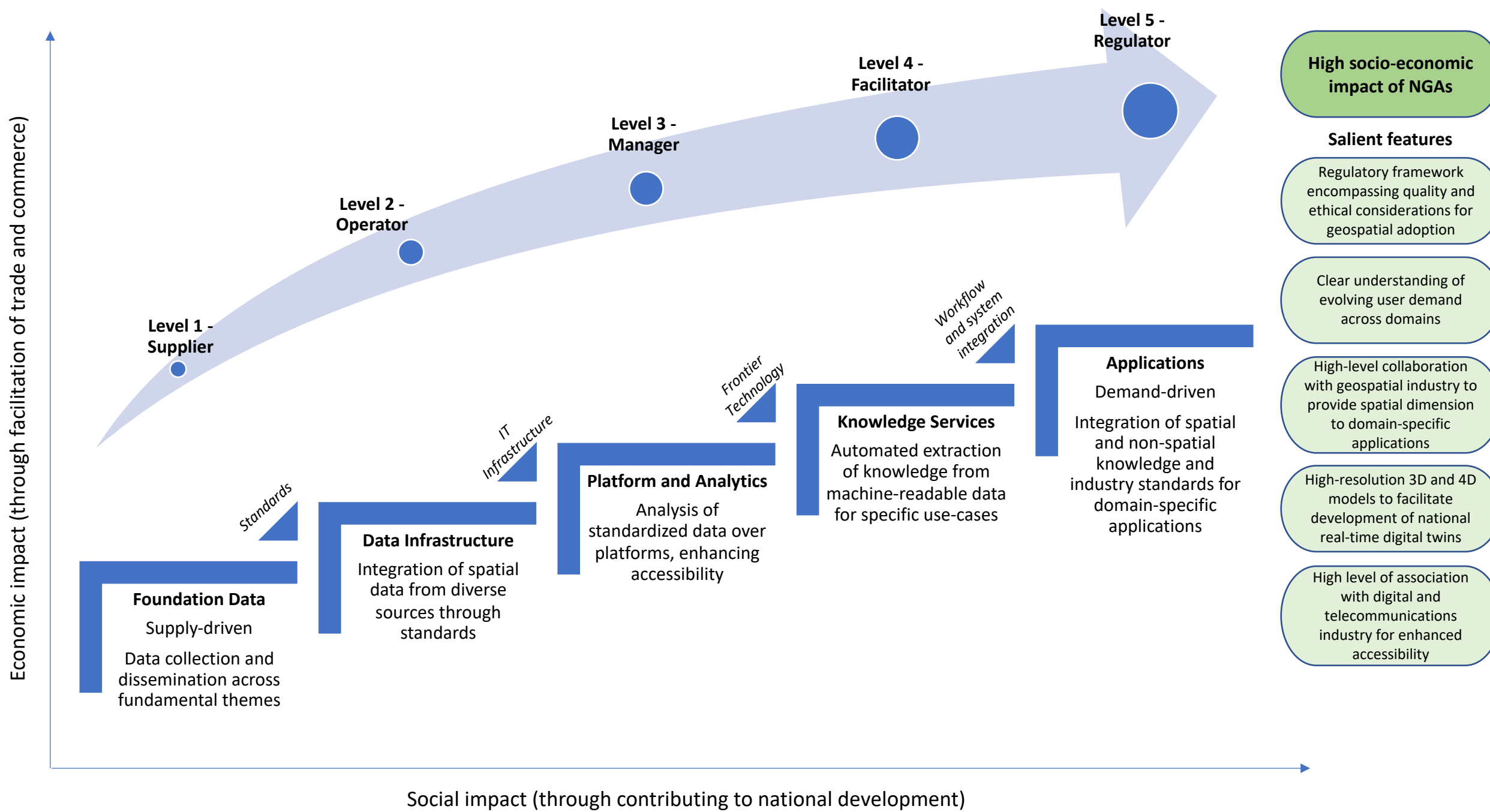
Hydrographic Survey



Thematic Mapping Agencies

National Geospatial Agencies – Value Chain Functions





Foundation Data
Supply-driven
Data collection and dissemination across fundamental themes

Data Infrastructure
Integration of spatial data from diverse sources through standards

Platform and Analytics
Analysis of standardized data over platforms, enhancing accessibility

Knowledge Services
Automated extraction of knowledge from machine-readable data for specific use-cases

Applications
Demand-driven
Integration of spatial and non-spatial knowledge and industry standards for domain-specific applications

High socio-economic impact of NGAs

Salient features

Regulatory framework encompassing quality and ethical considerations for geospatial adoption

Clear understanding of evolving user demand across domains

High-level collaboration with geospatial industry to provide spatial dimension to domain-specific applications

High-resolution 3D and 4D models to facilitate development of national real-time digital twins

High level of association with digital and telecommunications industry for enhanced accessibility