

SABAH GEO HUB

Geospatial Data & Mapping for Inclusive Decision-Making during the COVID-19

Doria Tai,
Director, Digital Government Division,
Sabah State Public Service Department
Malaysia

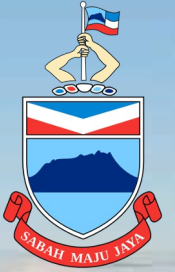
5 May 2023

GEOSPATIAL WORLD FORUM

02 – 05 MAY 2023

ROTTERDAM, THE NETHERLANDS

'GEOSPATIAL CARAVAN: EMBRACING ONE & ALL'





The COVID-19 Pandemic Crisis in Malaysia

WHO commended Malaysia's handling of COVID-19 pandemic



Impacted SDGs



Supermart Checks



The display of hospital beds and quarantine centres availability



use of innovative technologies and infrastructure to address the challenges posed by the pandemic.

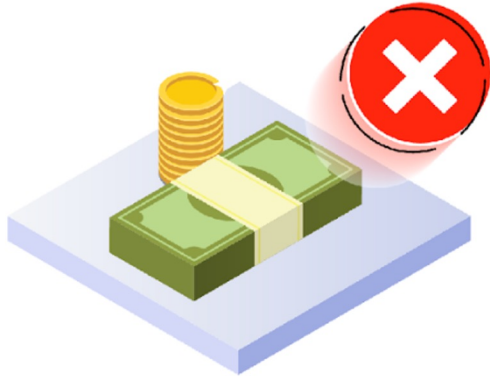


web maps and display of hospital beds and quarantine centres availability helps to ensure access services.



Collaboration between government agencies and the use of data hubs to achieve goals

LESSON LEARNT FROM THE COVID-19 PANDEMIC



During crisis,
we **are not interested** about

*Data is the new oil
Data is gold*

**We are not interested to
generate income from data**



Data

**Data does not need
to be highly detailed**

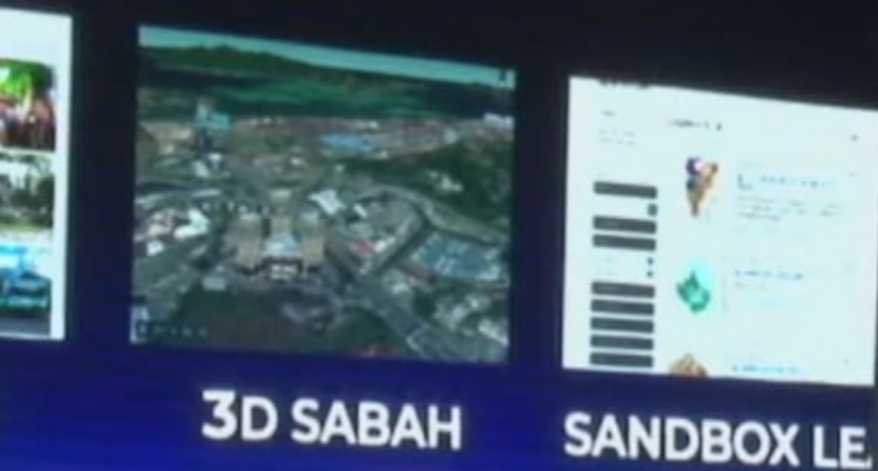
We are INTERESTED



- To help save lives and control pandemic
- To reach out to certain groups to give assistance

GEO HUB

WORKS ALONGSIDE PEOPLE AND
SUPPORT DIGITAL GOVERNMENT
AND DATA



Pandemic pushes us to act intuitively with digital data & technologies



- In the **post-COVID19** era, mass adoption of connected digital services by consumers, enterprises, and governments has emerged.
- Even in the **pre-pandemic** days, this digital mandate wasn't new. It's simply been brought into sharp focus due to the pandemic.
- **During pandemic**, the state government has to respond intuitively to emergencies as amenities and infrastructure i.e., 4G network coverage are still lacking in many places of Sabah.

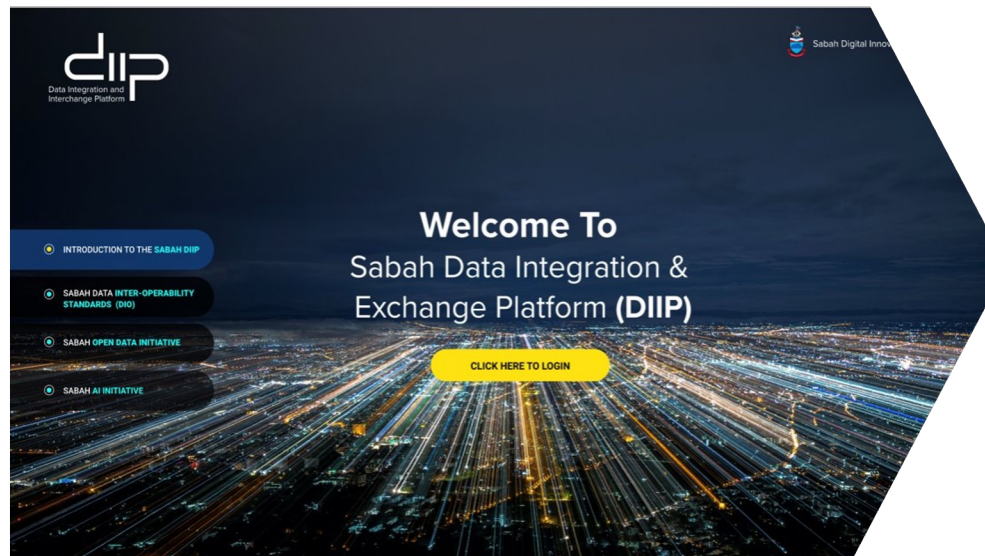
Government to take lead in driving digitalisation

- The core undertaking of Digital Government is producing data strategies that aims at promoting active sharing and integration of data.
- Connect individuals, organisations, government institutions, cities, and municipalities to promote better development of public services.
- Put in place the Sabah Data Integration and Interchange Platform (DIIP) connecting the People, Business and Geo Hubs.

SABAH DIGITAL GOVERNMENT INITIATIVE



To drive governance, business and social transformation



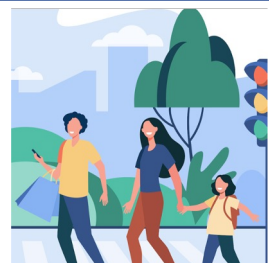
**Government
to
Government**



**Business
to
Government**



**Citizens
to
Government**



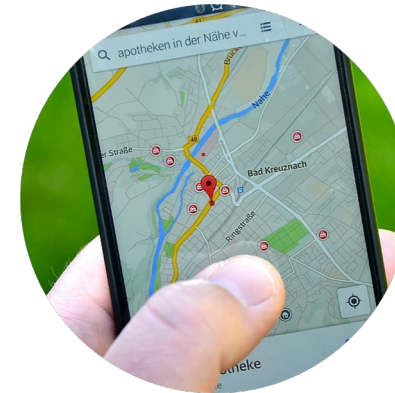
PEOPLE • BUSINESS • GEO DATA HUBS



People:
“Know your
Citizen”

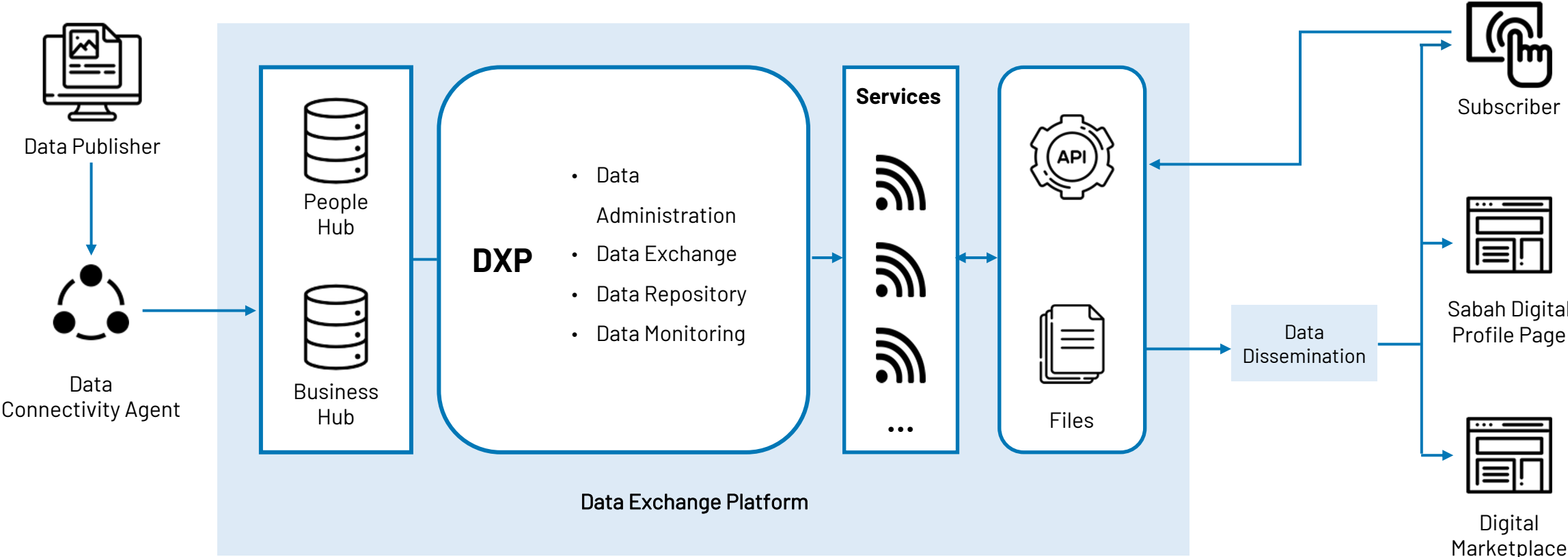


Business:
“Know your
Economy”



Land (Geo):
“Know your
Location”

Functionality of Data Hubs



Showcase 1

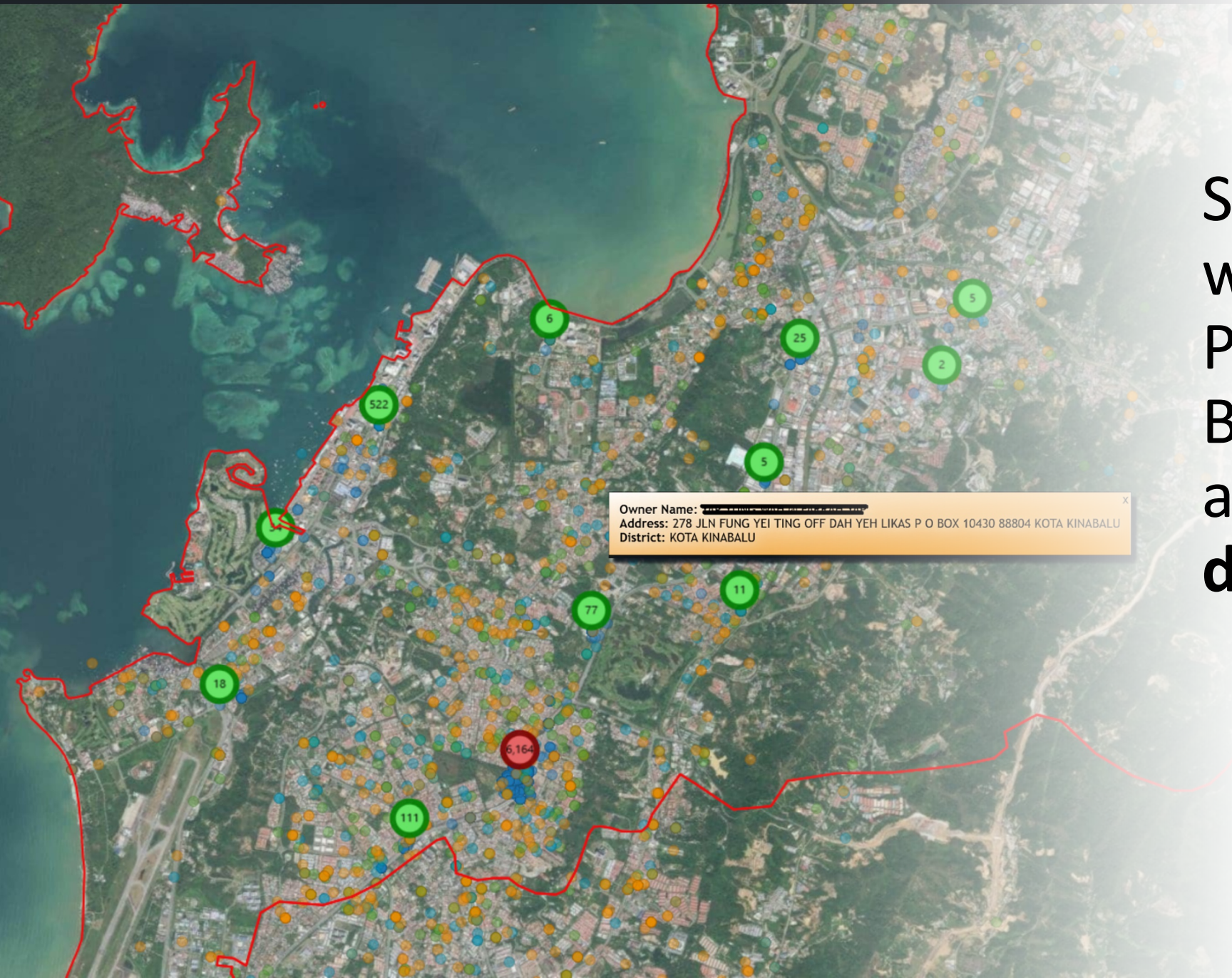
Data Propagation from data Source(s) to Data Hub(s)

Showcase 3

Data Monitoring and Tracking

Showcase 2

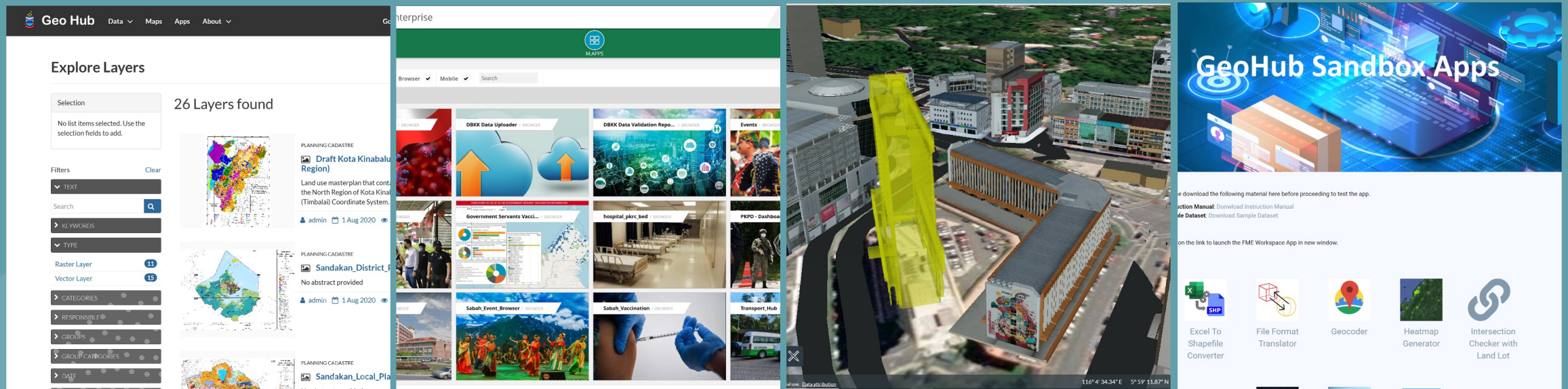
Data Service Application Data Sharing Portal + 2 Applications



Sabah Geo Hub
works alongside
People and
Business Hubs to
assist in
decision-making

Sabah Geo Hub is empowering the state's digital transformation initiatives

1. Data Store
2. Apps Store
3. Sabah 3D Environment
4. Sandbox with Self-Learning Tools



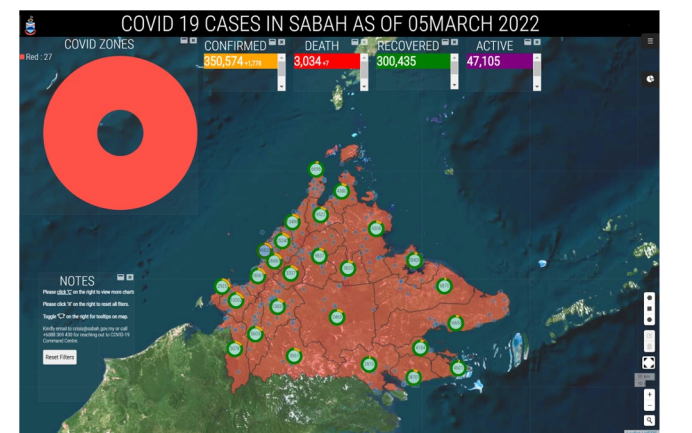
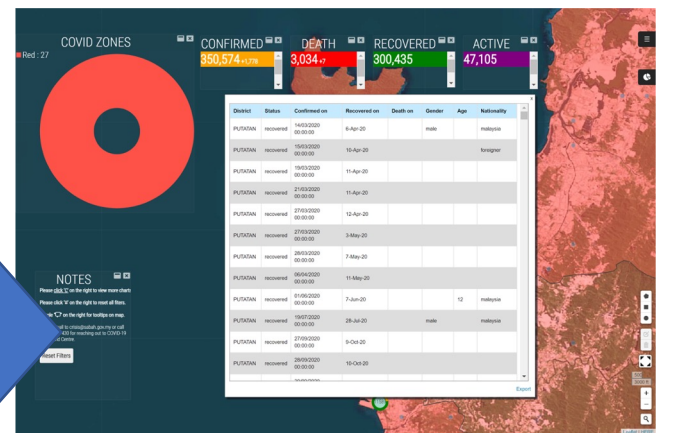
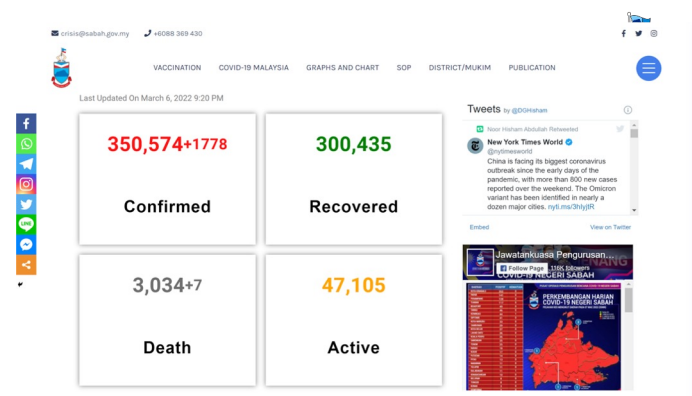
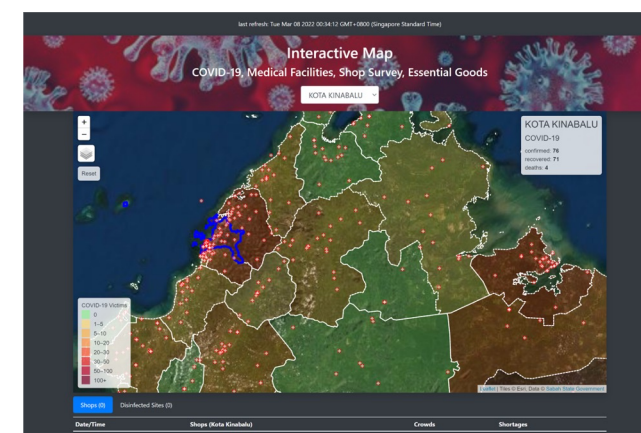
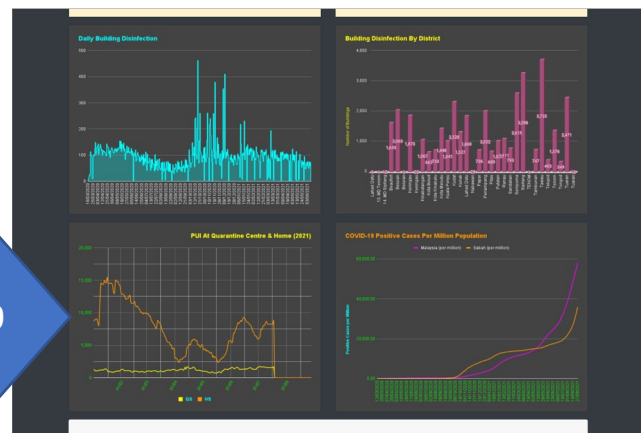
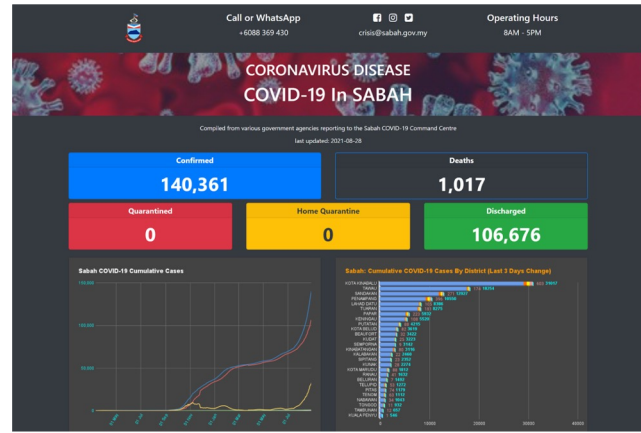
Start small, act fast, evolve progressively

KAWASAN BANGUNAN KERAJAAN YANG SUDAH DISINFEKSI (25 March 2020)

BIL	PBT	KAWASAN BANGUNAN KERAJAAN YANG SUDAH DISINFEKSI	Total Nos of Disinfected
1.	DBKK	1. Pasar Besar KK 2. Pasar Ikan KK 3. Pasar Tanjung Aru 4. Pasar Sembulan 5. Pasar Inanam 6. Pasar Menggatal 7. Pasar Telipok 8. Ibu Pejabat DBKK 9. Depoh DBKK 10. Nurseri DBKK	10
		Total	10

LAPORAN COVID-19 UNTUK NEGERI SABAH 28 MAC 2020 (SABTU)

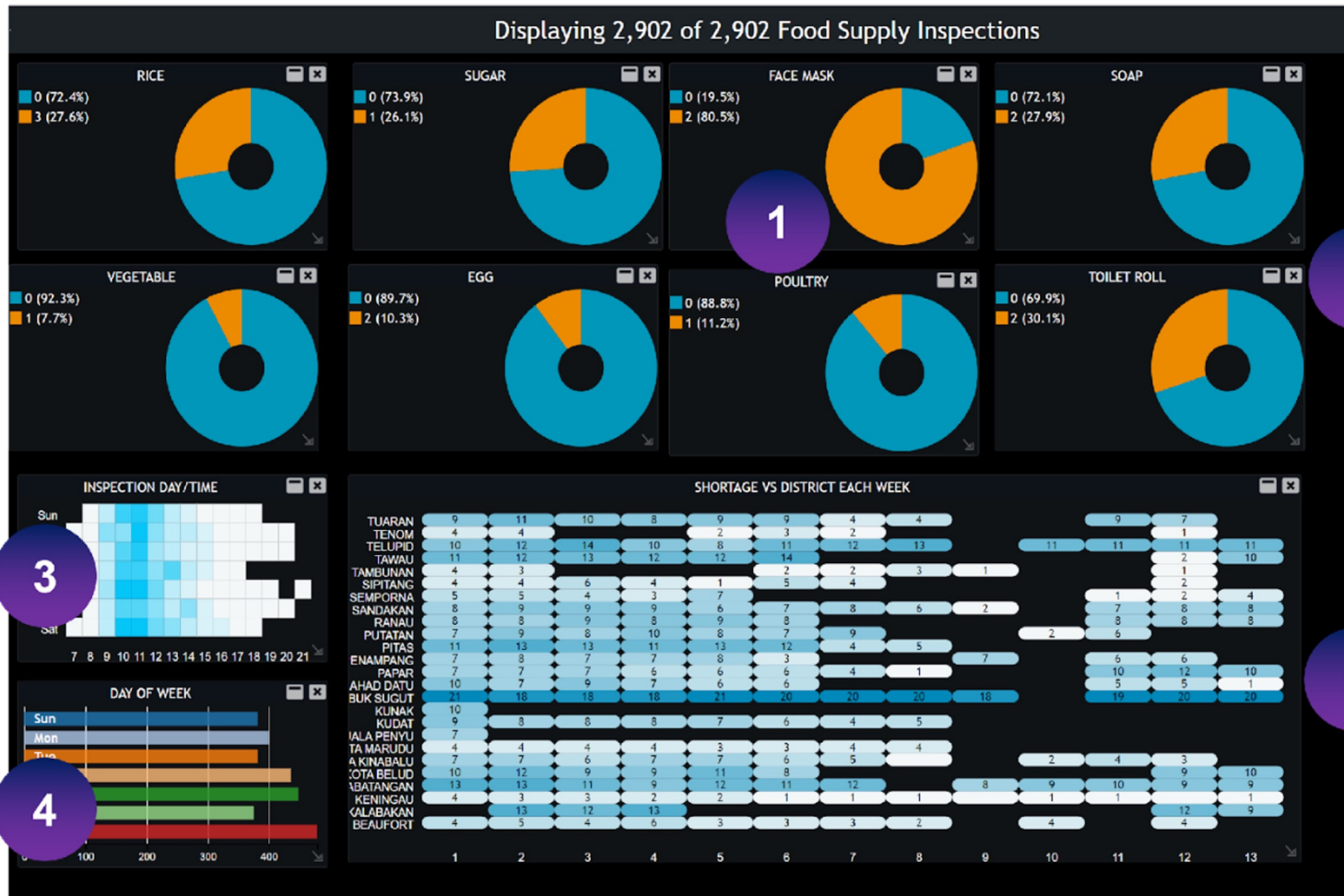
BIL.	DAERAH	JUMLAH KES POSITIF	MANGSA (ORANG)		
			KUARANTIN	PUSAT KUARANTIN	RUMAH SENDIRI
1	Lahad Datu/Tungku	33	186	133	53
2	Tawau	32	1317	23	1294
3	Kota Kinabalu	19	56	-	-
4	Kinabatangan	8	288	8	280
5	Sandakan	8	183	-	-
6	Tuaran	12	145	-	145
7	Kunak	5	706	-	706
8	Beaufort	5	215	-	215
9	Spitalang	4	104	10	94
10	Putatan	2	207	-	207
11	Kota Belud	4	193	15	178
12	Semporna	1	142	-	142
13	Papar	1	161	-	161
14	Ranau	-	78	57	21
15	Kota Marudu	-	57	-	57
16	Kudat	-	44	-	44
17	Pitas	-	20	-	20
18	Keningau	-	65	-	65
19	Tanoh	-	9	-	9
20	Beluran	-	9	-	9
21	Tambunan	-	9	-	9



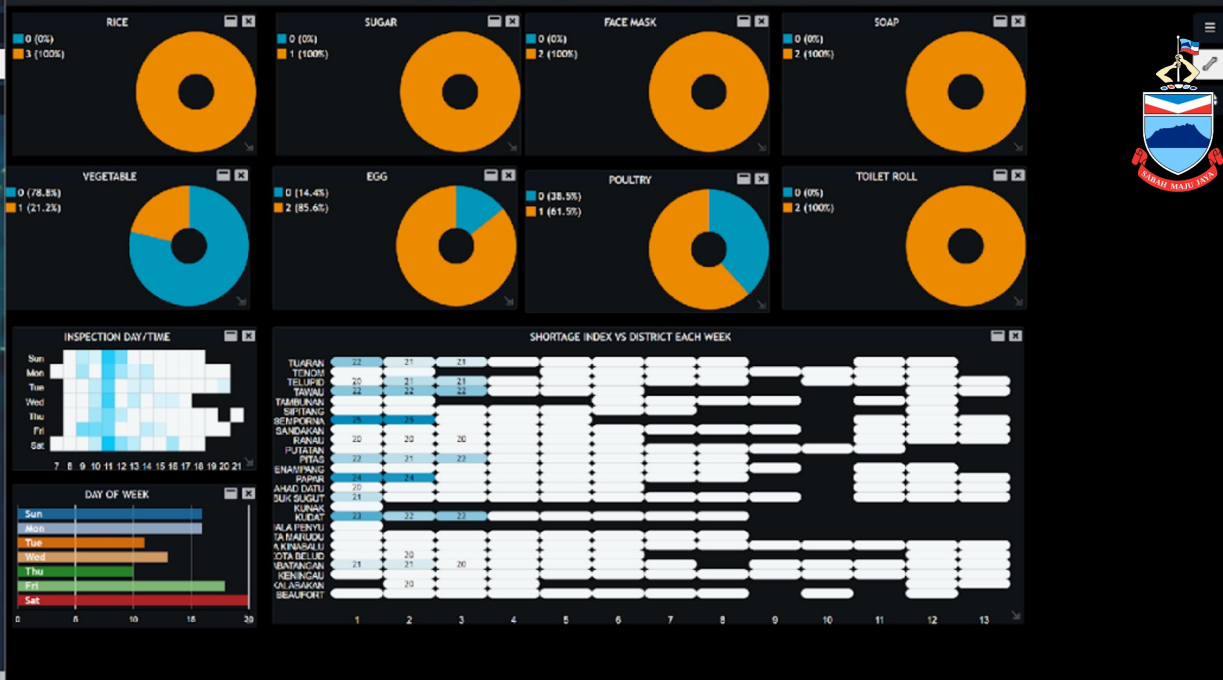
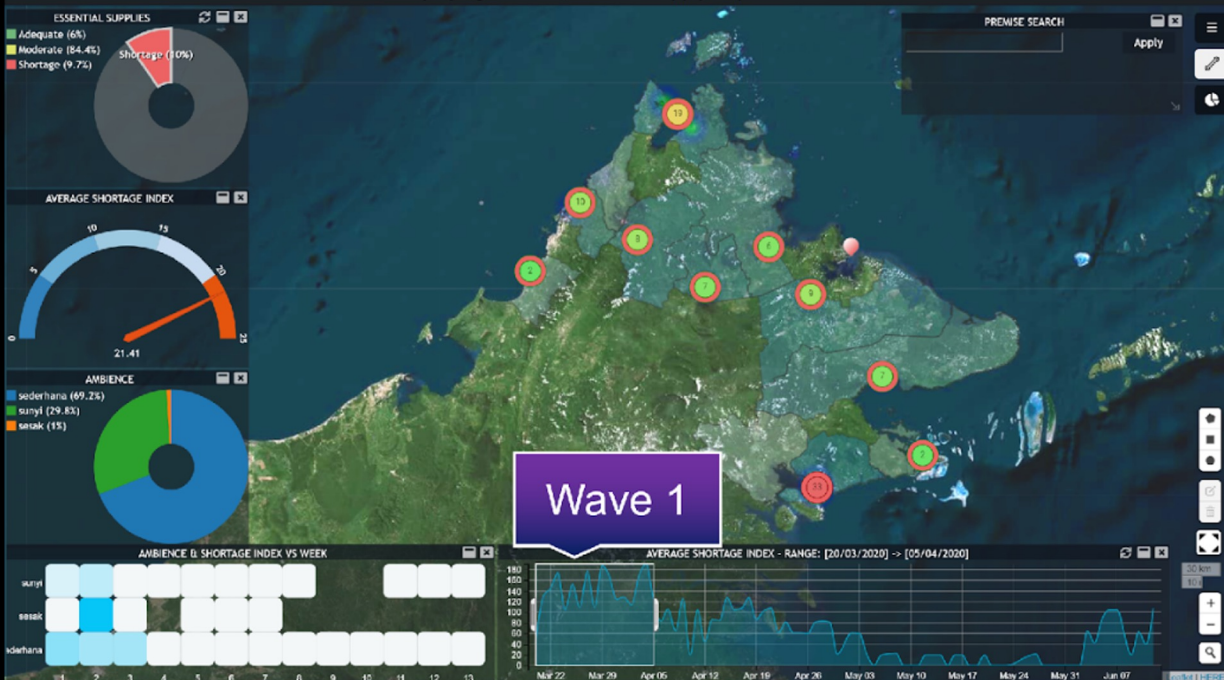


SUPERMARKET CHECKS

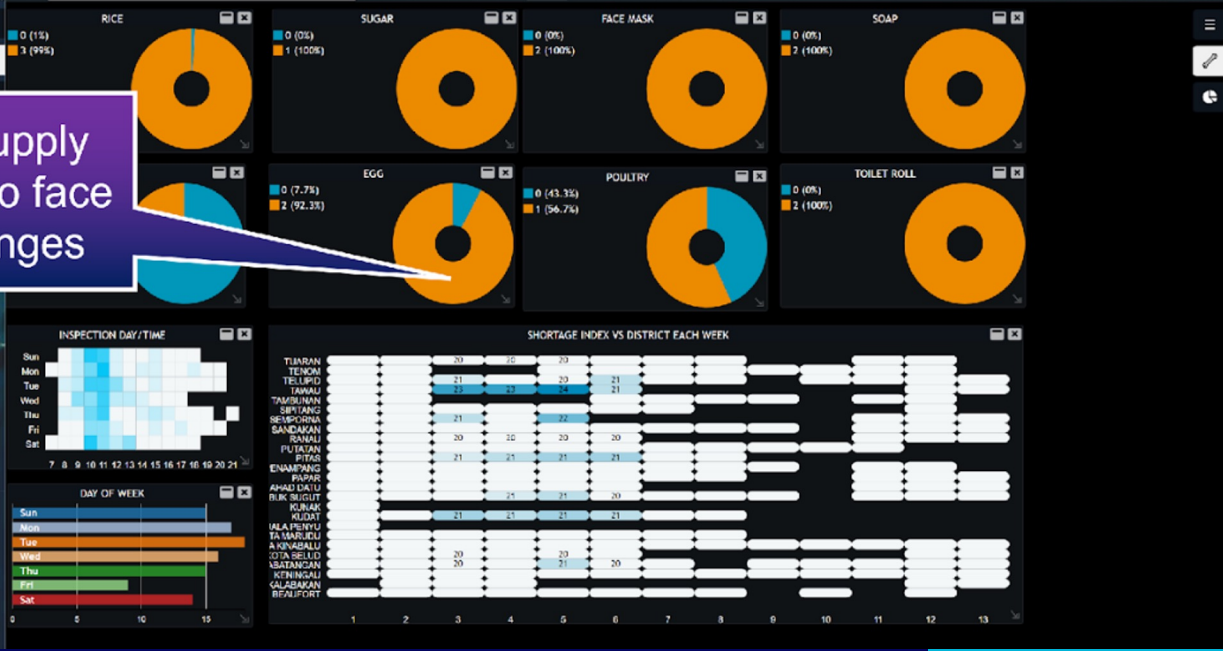
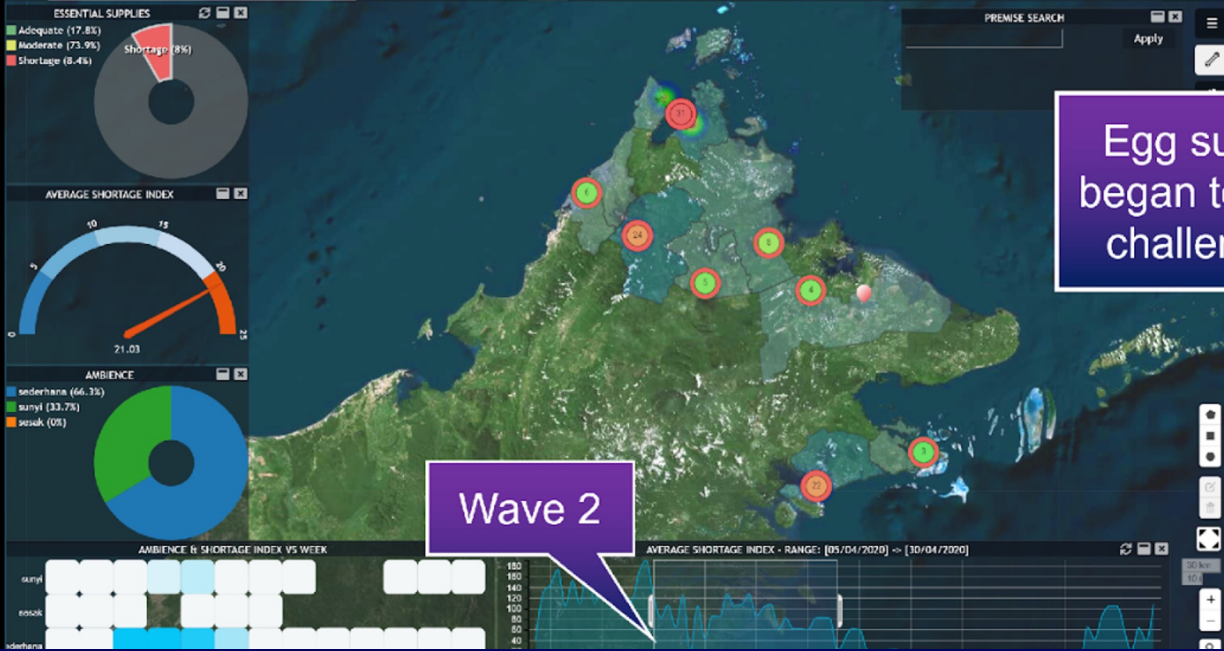
Data from Daily Supermarket Survey for shortage of items (to avoid panic buying)



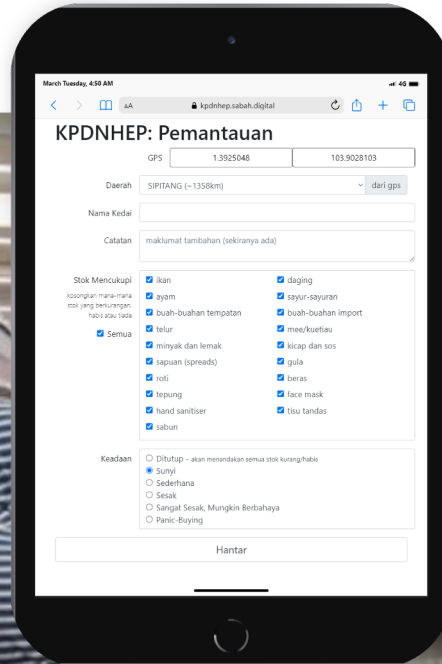
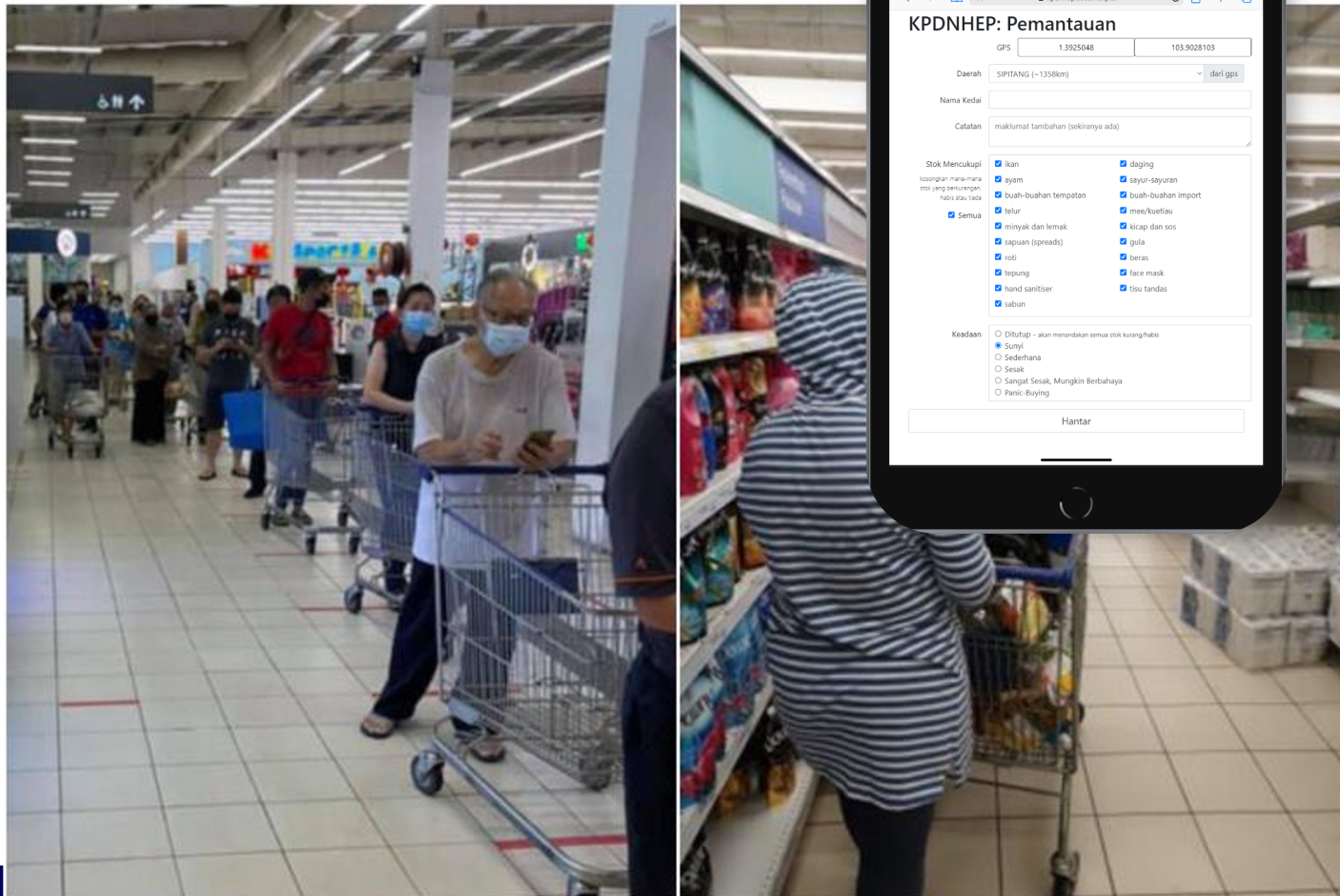
1. Face masks had the most severe shortage
2. Toilet roll and soap were among the top 3 shortages
3. Most inspections were done between late morning to lunch
4. Number of inspections per day were carried out quite evenly throughout
5. Labuk Sugut, Telupid, Kinabatangan, and Tawau had more supplies shortage



Egg supply began to face challenges

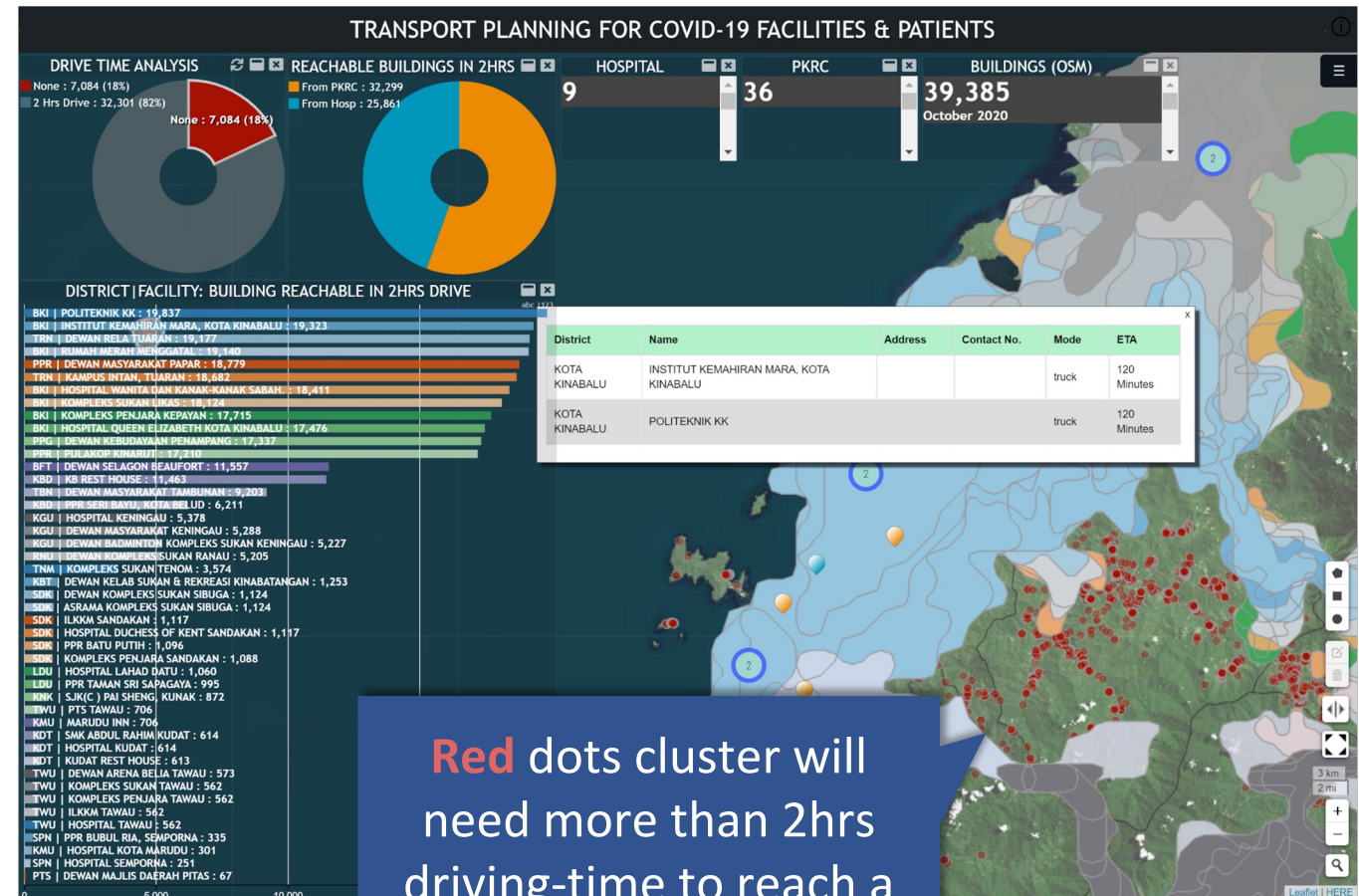


Addressing the concern of panic buying & food supply shortage



Transportation Arrangement

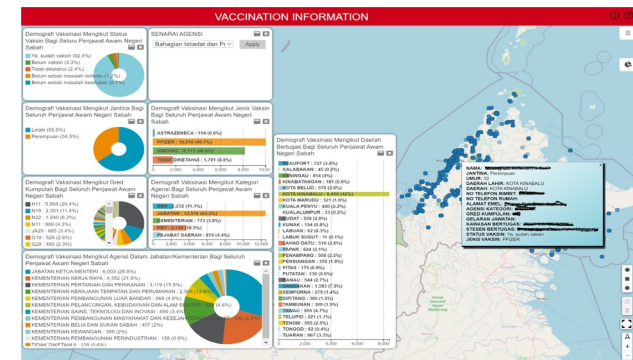
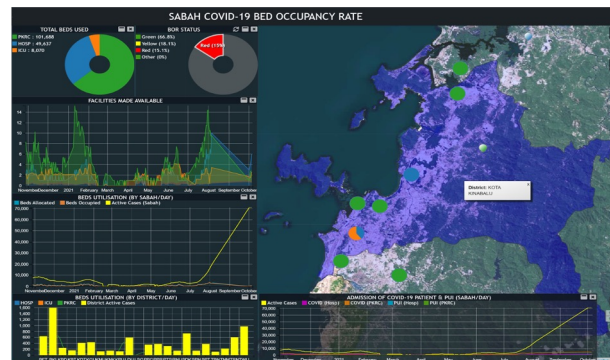
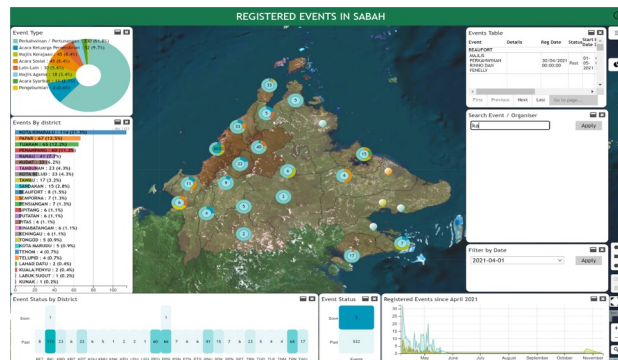
- Transporting COVID-19 patient with available government vehicles.
- Need to understand accessibility between **buildings** and COVID-19 **hospitals / quarantine centres**



Red dots cluster will need more than 2hrs driving-time to reach a COVID-19 hospital / QC

Significance of geospatial data and mapping in supporting **Inclusive decision-making**

- Registered events (past, current & future) across Sabah
- Bed occupancy rate in COVID-19 hospitals and quarantine centres
- Status of vaccination programme in Sabah
- Supermarket Checks





Conclusion : Be prepared during peace time

- Work on initiatives that aligning to the Sustainable Development Goals principle of leaving no one behind.
- The state government needs to know its people and businesses well with the respective locations.
- Inclusive management of information and services are becoming a lot more crucial for reaching all communities.
- Start small, act fast, and scale progressively when dealing with a digital transformation initiative.





Thank you