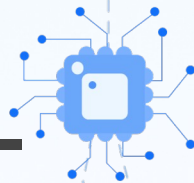
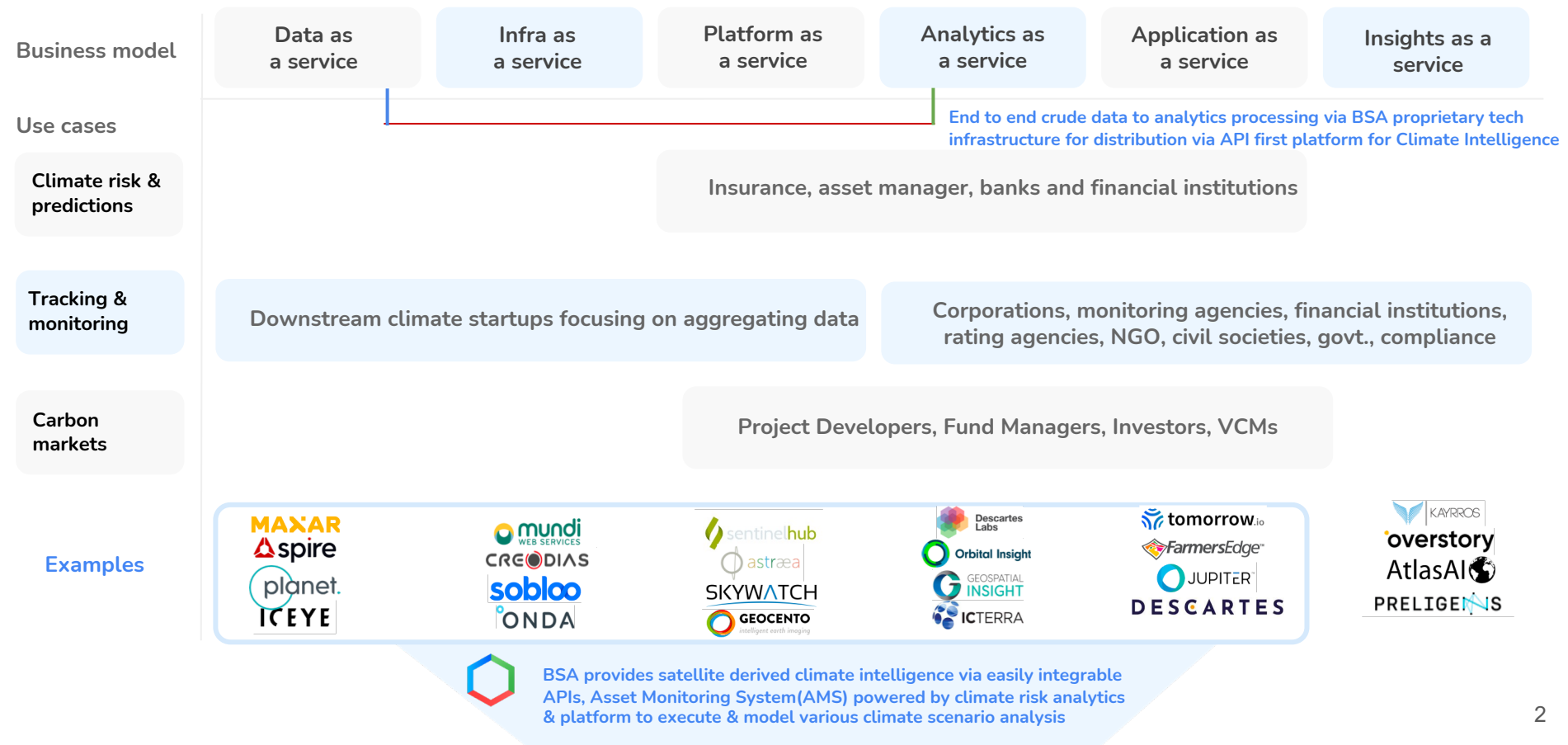




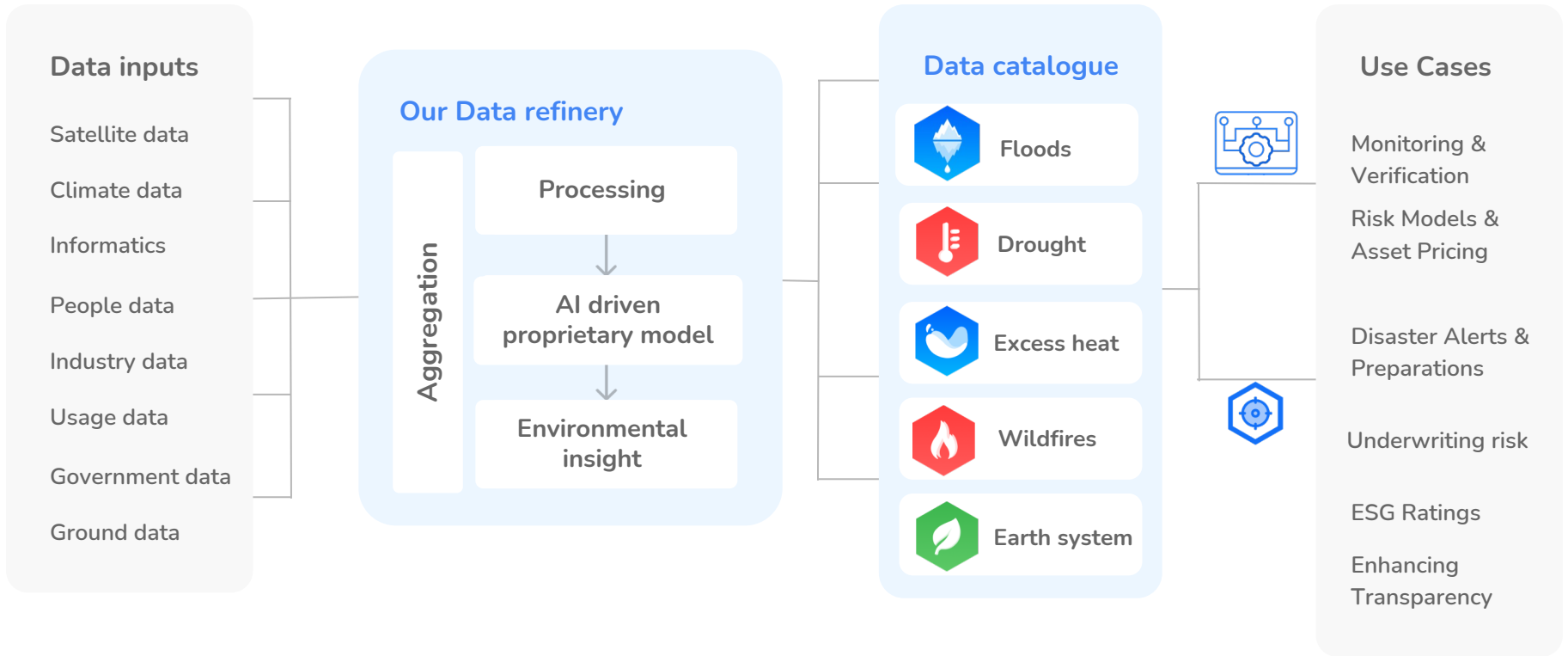
Climate Intelligence to power critical decisions – Location based & Asset based



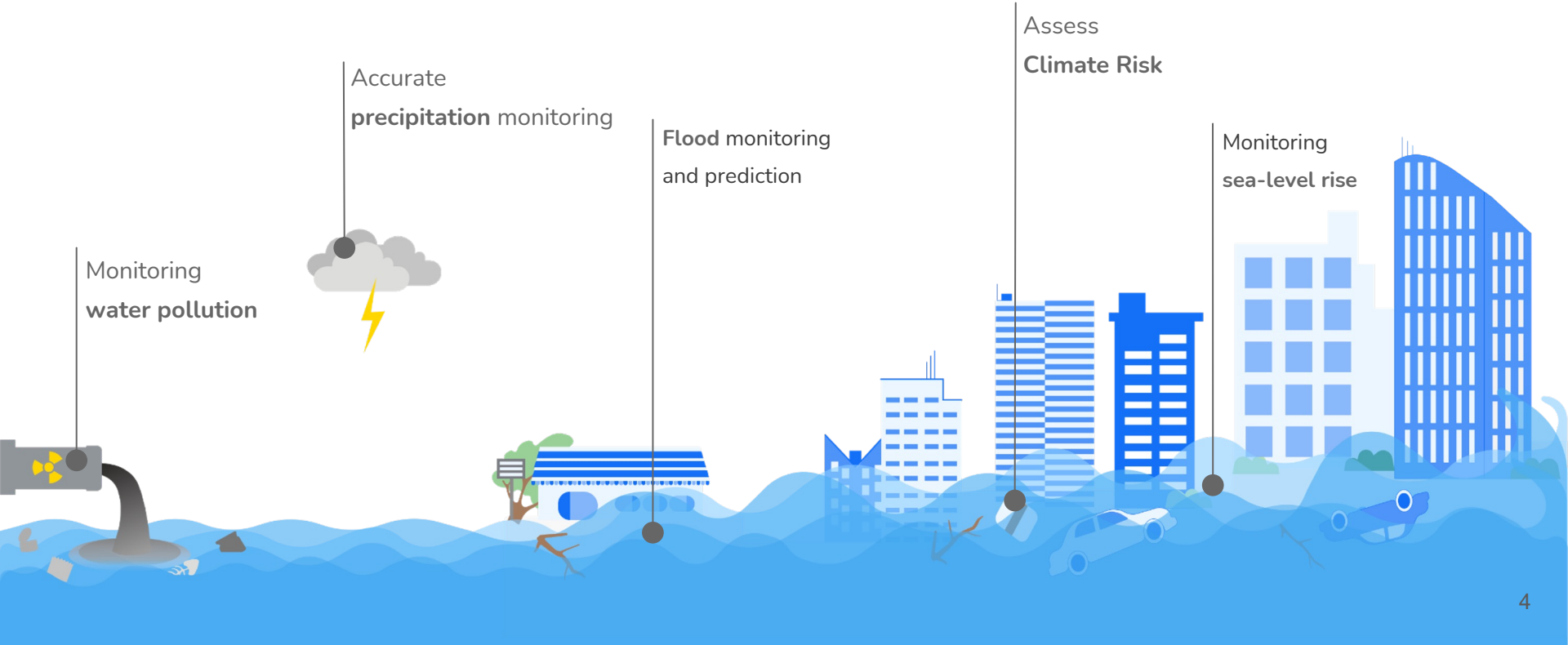
Market position : Space-Tech Value Chain



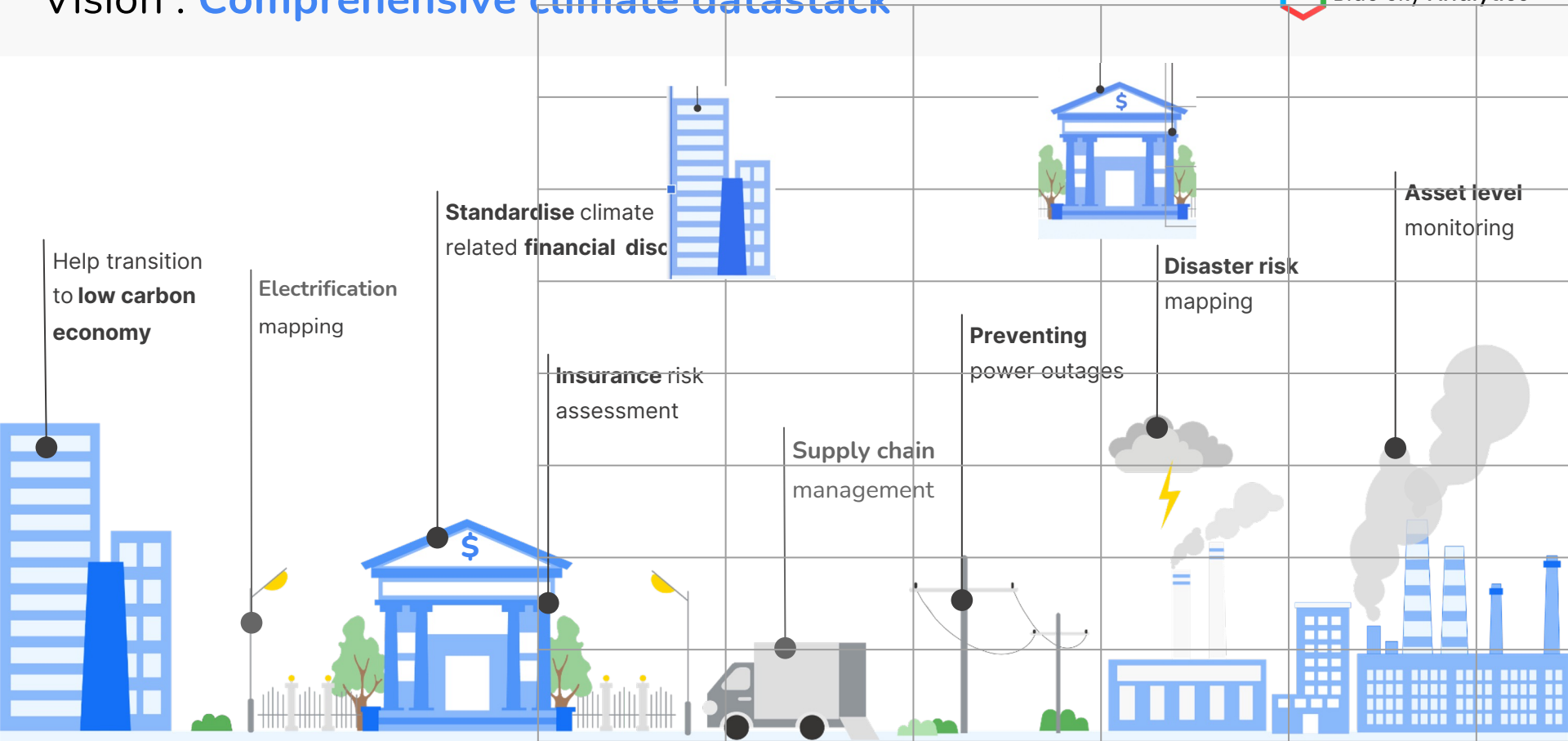
Our Solution : Raw Data to Climate Intelligence



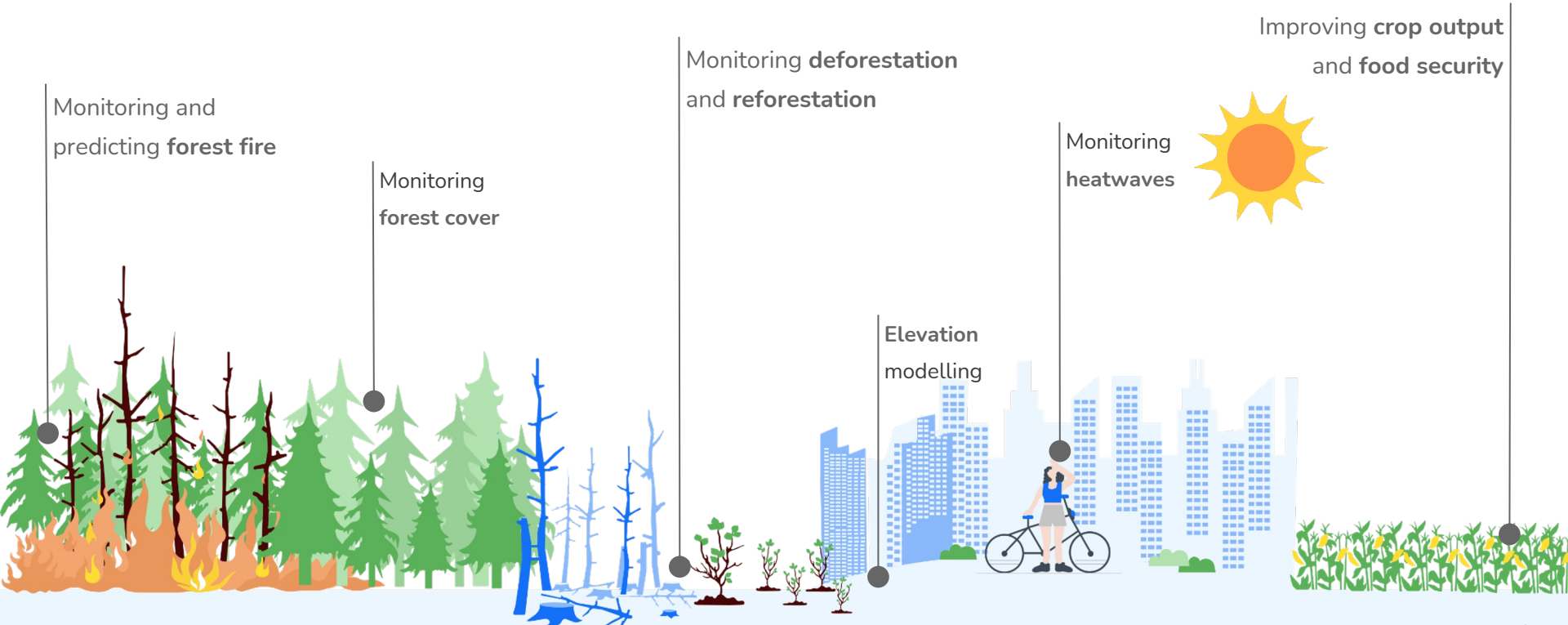
Vision : Comprehensive climate datastack

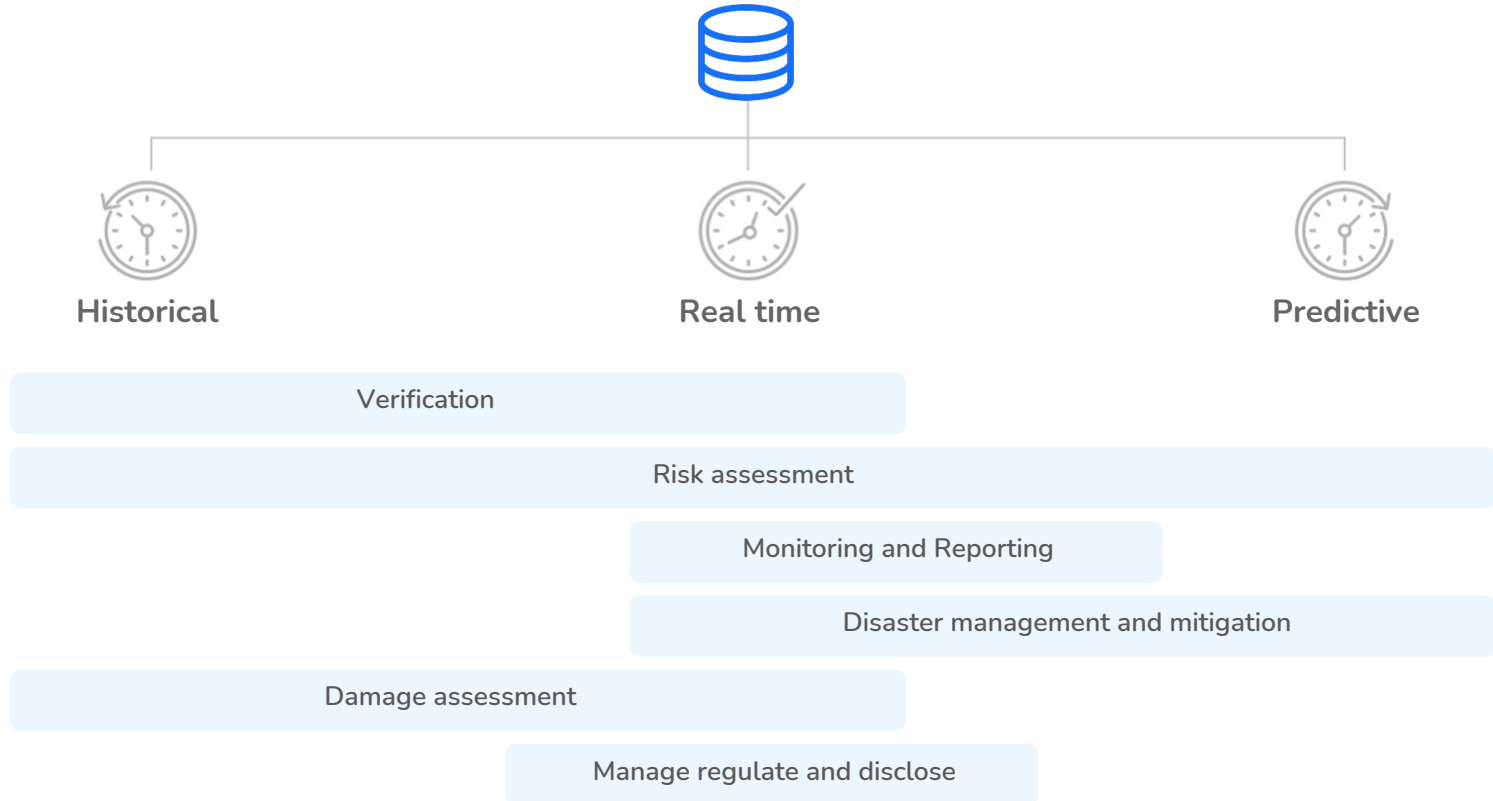


Vision : Comprehensive climate datastack



Vision : Comprehensive climate datastack





Input latitude and longitude



Forests



Power plants



Home loan
portfolio



Industrial credit
portfolio



Real
estate
assets

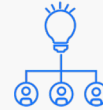


Power
infrastructure

Allow us to



To do the **analysis** and find **satellite data**



Build our **proprietary models**, work with **domain experts**
and **extract relevant intelligence**

Deliver the insights via



Visualization through our tool
Spacetime



API calling through our tool
Dev Portal



Asset Managers



Carbon Markets



Electric Utility



Insurance



Reinsurance



Agriculture



Climate litigation



Government



Natural Capital



Smart Cities



Banking



Disaster Management



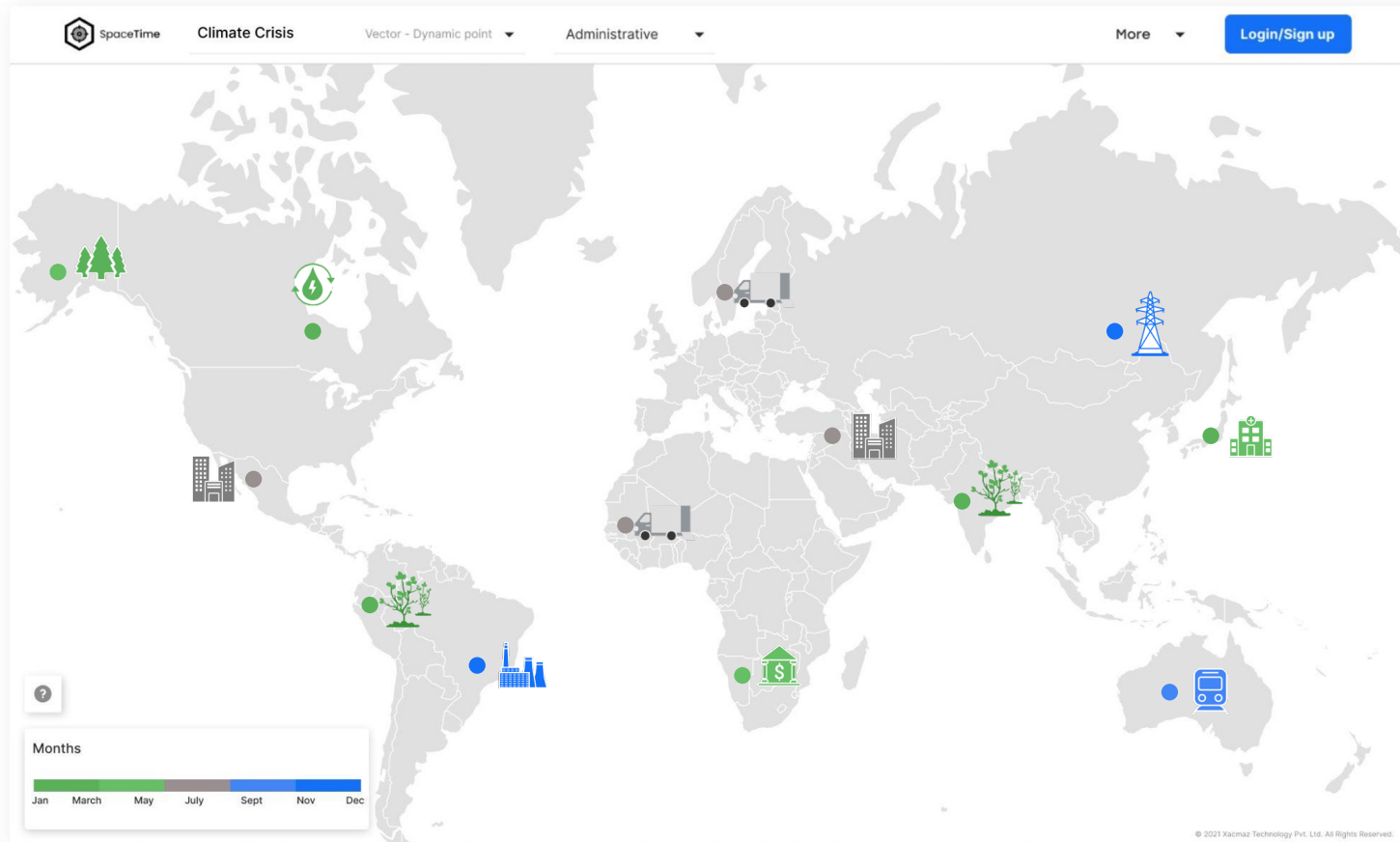
Grants and Foundation














Real Estate

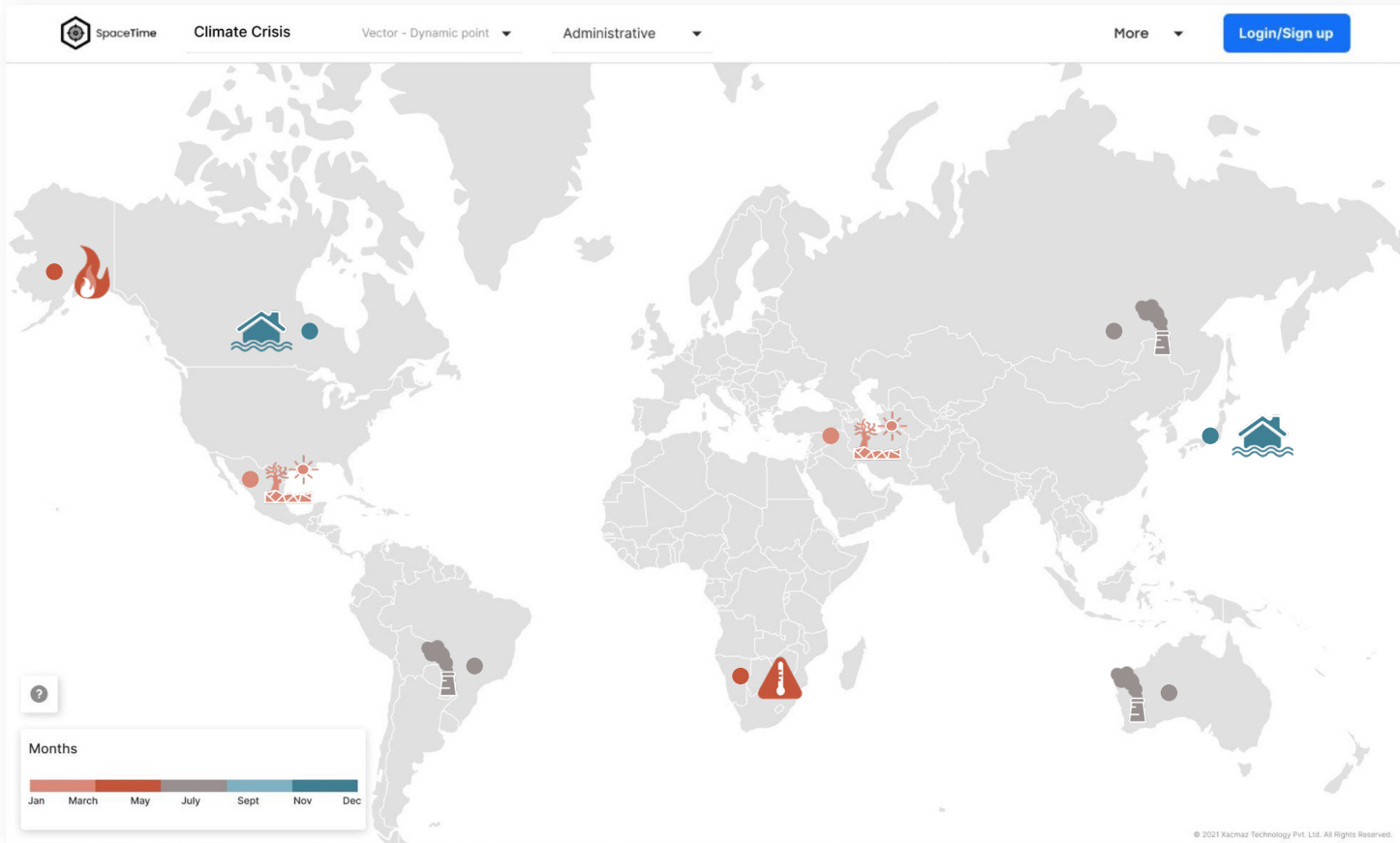


Stock Exchanges



-  Vegetation
-  Forest
-  Hydropower
-  Hospital
-  Bank
-  Supply chain
-  High rise building
-  Train line
-  House
-  Powerlines
-  Powerplant

Climate Risk



-  Floods
-  Emissions
-  Droughts
-  Heat risk
-  Forest fires
-  Forest fires

Structured High frequency - high res data by Lat/Long & Time

Insurance risk
assessment

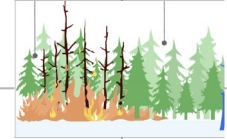


(23.0225° N, 72.5714° E)

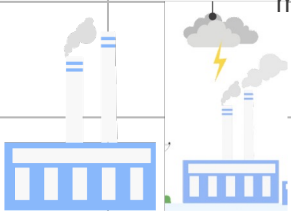
Standardise climate
related **financial disclosures**



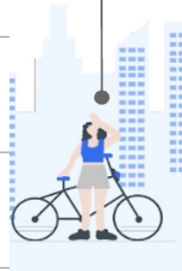
Monitoring &
predicting wildfires



Asset level
monitoring



Monitoring
heatwaves



Supply chain
management



Monitoring
forest cover



Monitoring
sea-level rise



(43.7696756° N, 11.2558974° E)

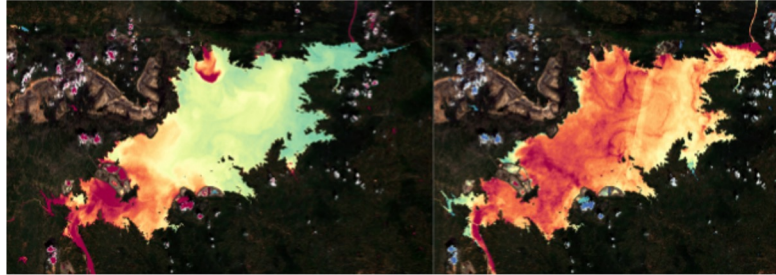
Monitoring the pulse of the planet

Water quality monitoring

Distribution of color dissolved organic matter Distribution of Chlorophyll a (Chl_a)

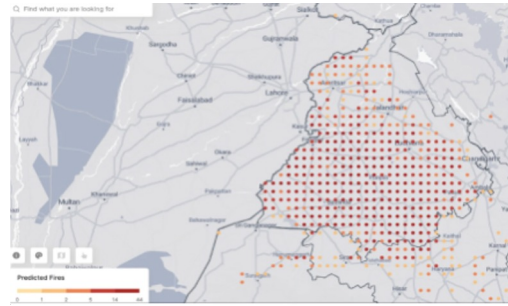
Source: Sentinel 2 L2A | Units: mg/L

Source: Sentinel 2 L2A | Units: mg/m3



Water quality parameters for GB Pant Sagar, Singrauli

Fire predictions



Predicted fires in Punjab, India on 16 November 2021

Flood monitoring



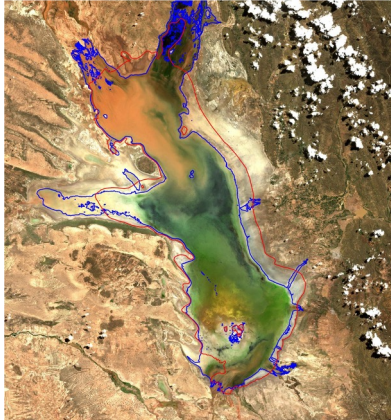
Mississippi river before and after floods

Sea level rise



Sea level rise in Mumbai

Surface water quantification



Surface water quantification for Lake Poopo, 24/03/2020

High frequency, high-accuracy data with adequate spatio-temporal resolution

Availability across geographies

Observed continuous data for various climate variables

THANK YOU

Contact : Abi@blueskyhq.io for more information

