



ORORA

TECHNOLOGIES

Thermal Data Intelligence

04/05/2023

Geospatial World Forum, Rotterdam

Session: Generating Intelligence with AI/ML



OUR
PLANET
IS
CHANGING
FAST!

The New York Times



Bloomberg

Wildfires Are Intensifying.

Climate change: Heat deaths could triple by 2050

Drought in Americas Threatens Outlook for Crucial Crop Supplies



Detect **natural threats** before they cause economical or physical harm



Use **scarce resources** most efficiently



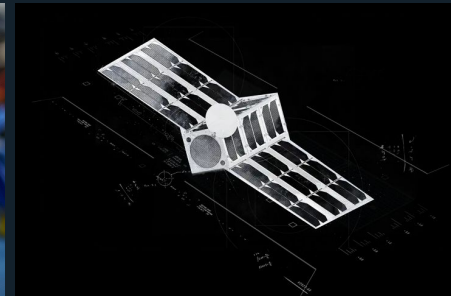
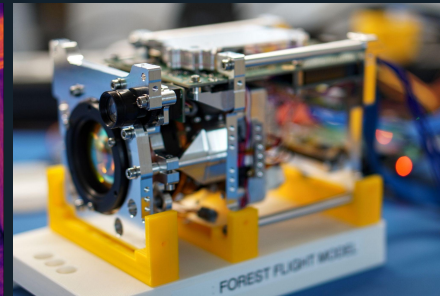
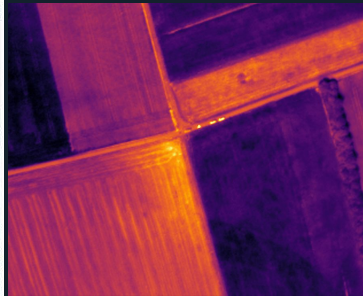
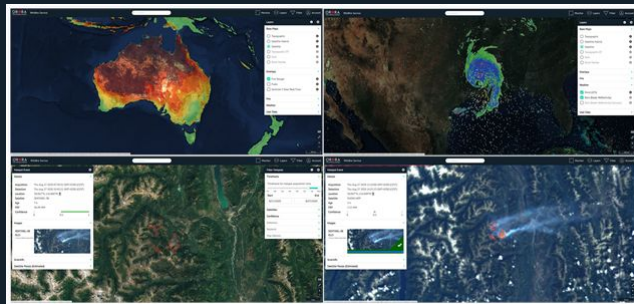
Global insights - natural disasters such as wildfire or drought **do not stop at borders.**



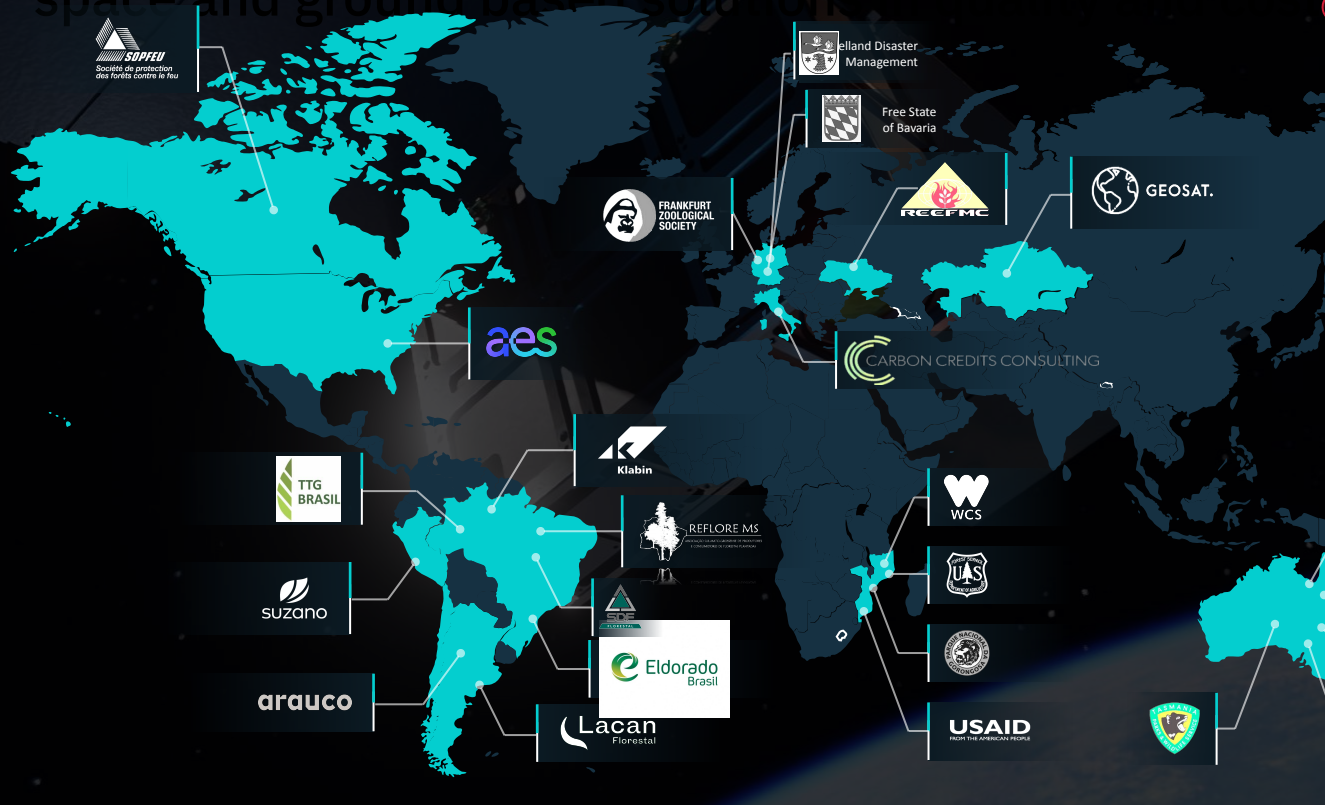
WE MUST
USE THE LARGE
QUANTITIES OF
AVAILABLE EO
DATA
INTELLIGENTLY

Company Profile

- Founded 2018 in Munich/Germany
- Spin-off from the Technical University of Munich
- Grown to a team of over 80 international team members
- Successfully raised >20 Mio € in Seed & Series A Round



Market Leader - Over 30 customers worldwide trust in us



Strategic Partnerships

 rosenbauer

 Ai2 Allen Institute for AI

Constellation for continuous global monitoring

Q1 2022

June 2023

2024

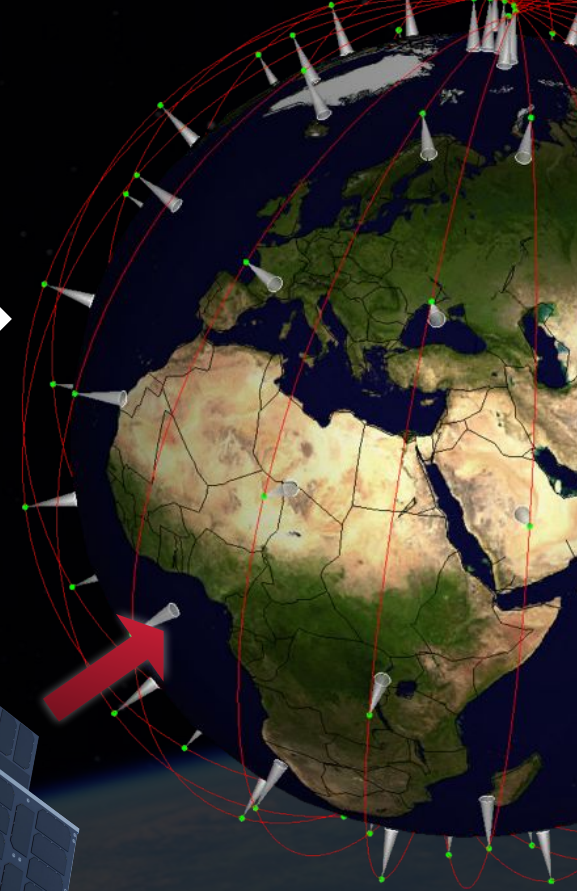
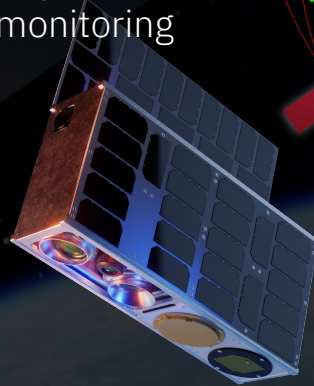
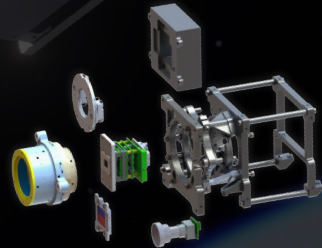
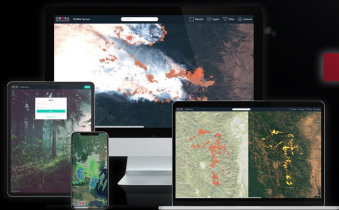
2026-2027

Forest-1 in space ✓
Successful in-orbit demonstration

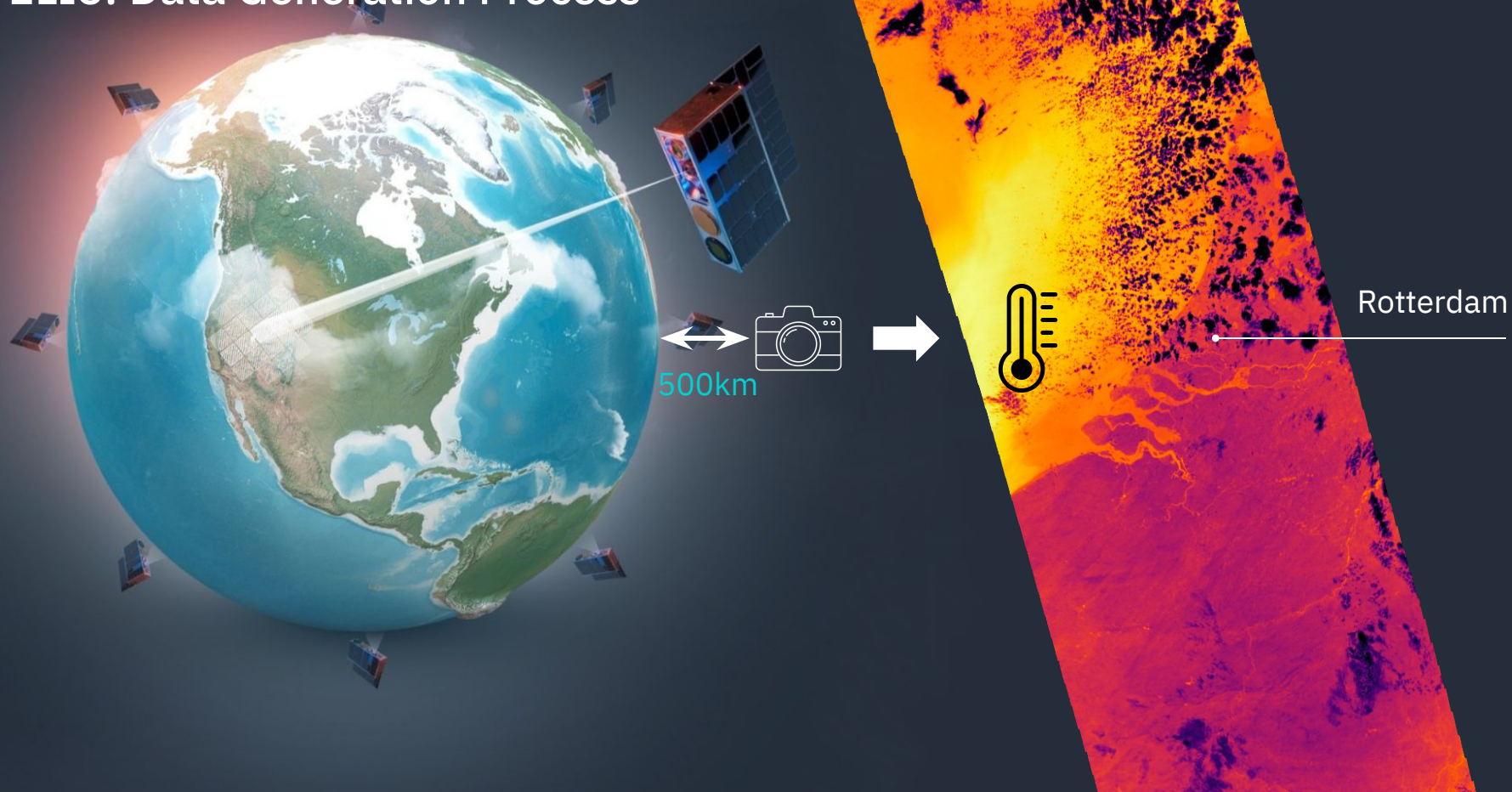
Forest-2 launch
Swath: 410 km
GSD: 200m

Constellation launch
12h revisit global data acquisition

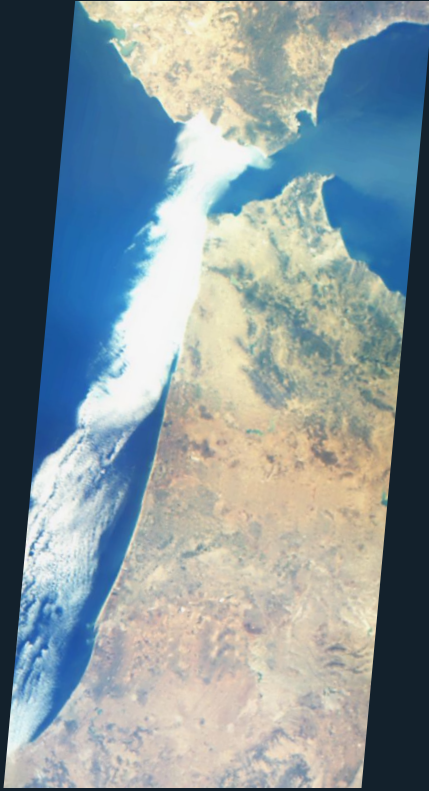
Constellation expansion
Real-time global monitoring



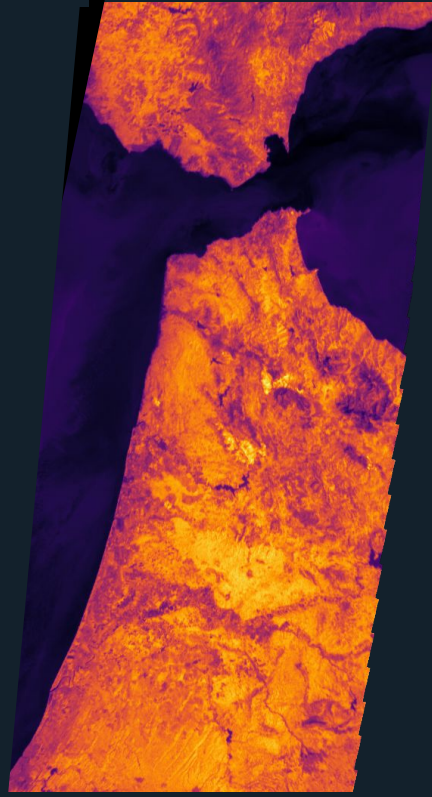
ELI5: Data Generation Process



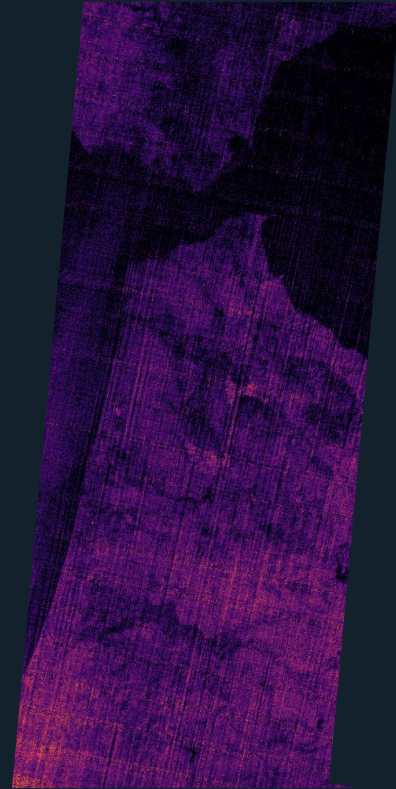
FOREST-1 Picture Family



RGB

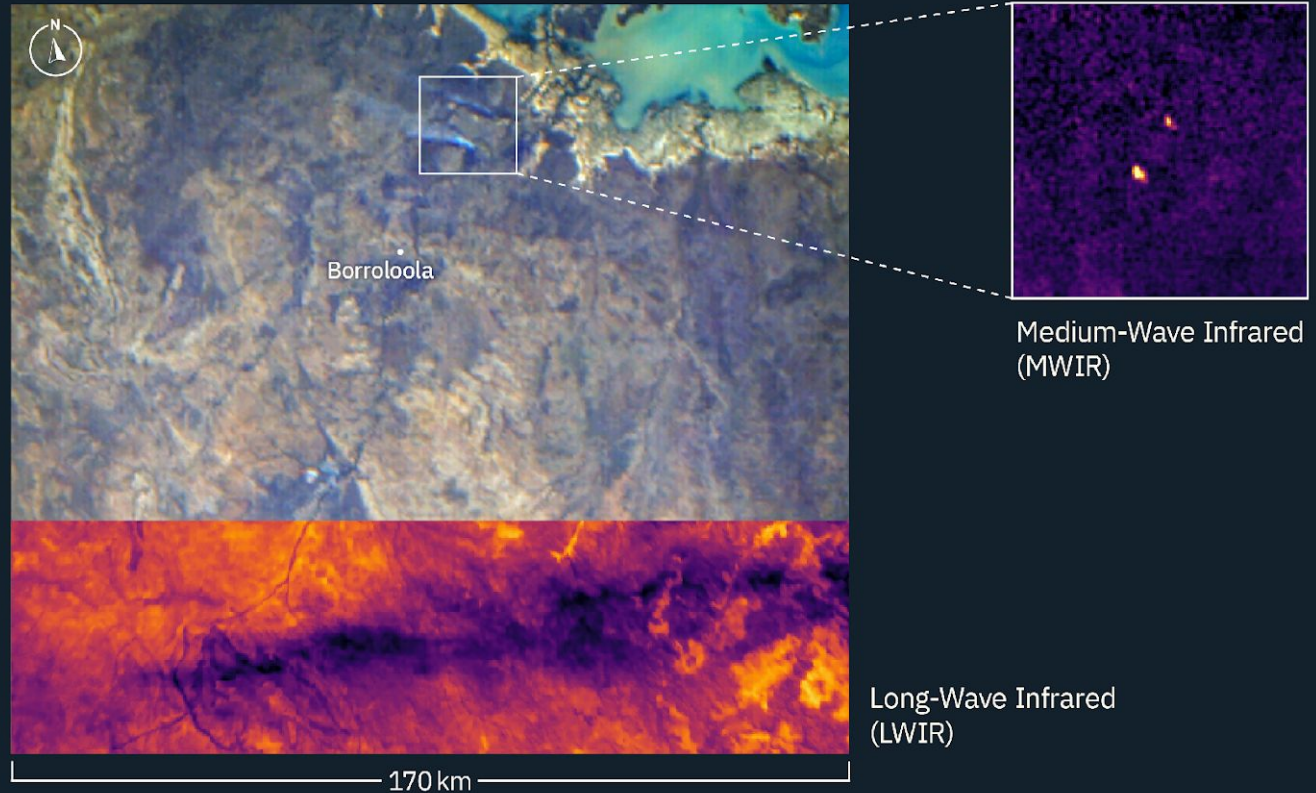


LWIR

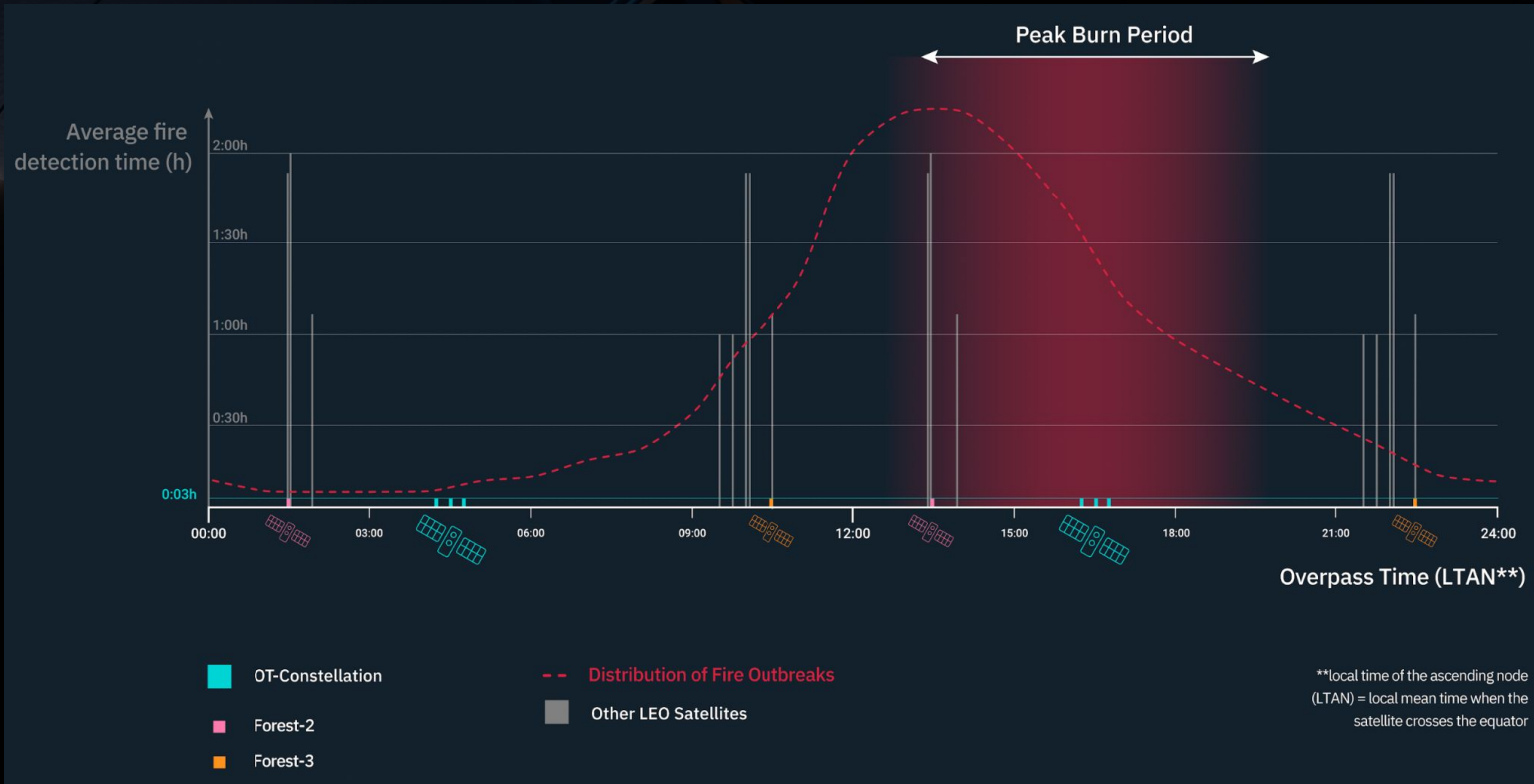


MWIR

FOREST-1: Wildfire Data Example



Filling the monitoring gap - providing data that does not exist yet.





We Transform raw Data Into Actionable Insights

Our Data Sources

01 OroraTech Satellites



02 Public Satellites **



03 Ground-based Cameras & IoT Sensors



04 Customer Data

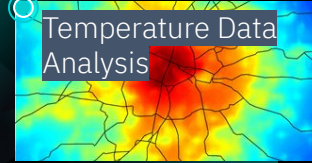


Analytics Core

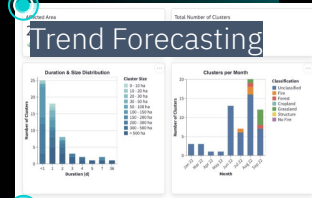
Wildfire Monitoring



Temperature Data Analysis



Trend Forecasting



Change Detection

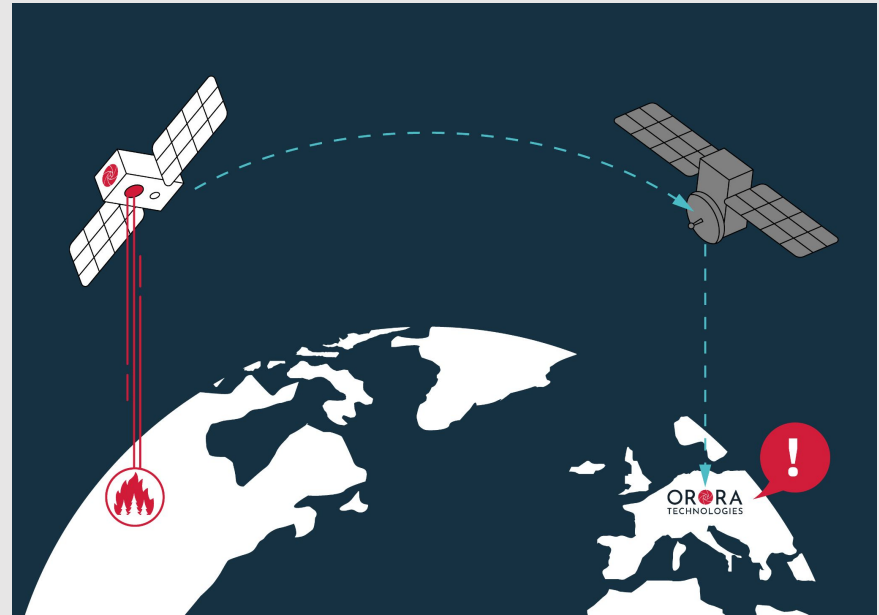




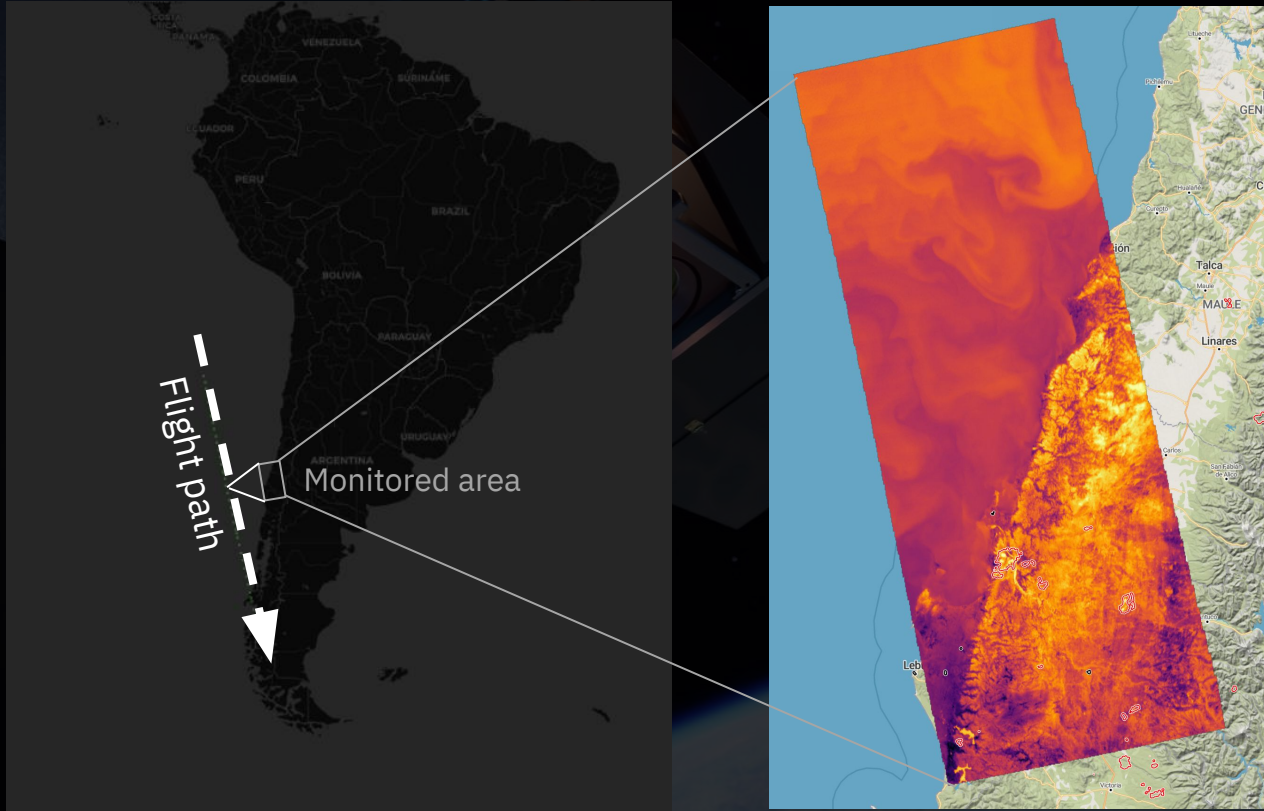
Machine Learning based Data Products

Edge ML: On-Board Processing

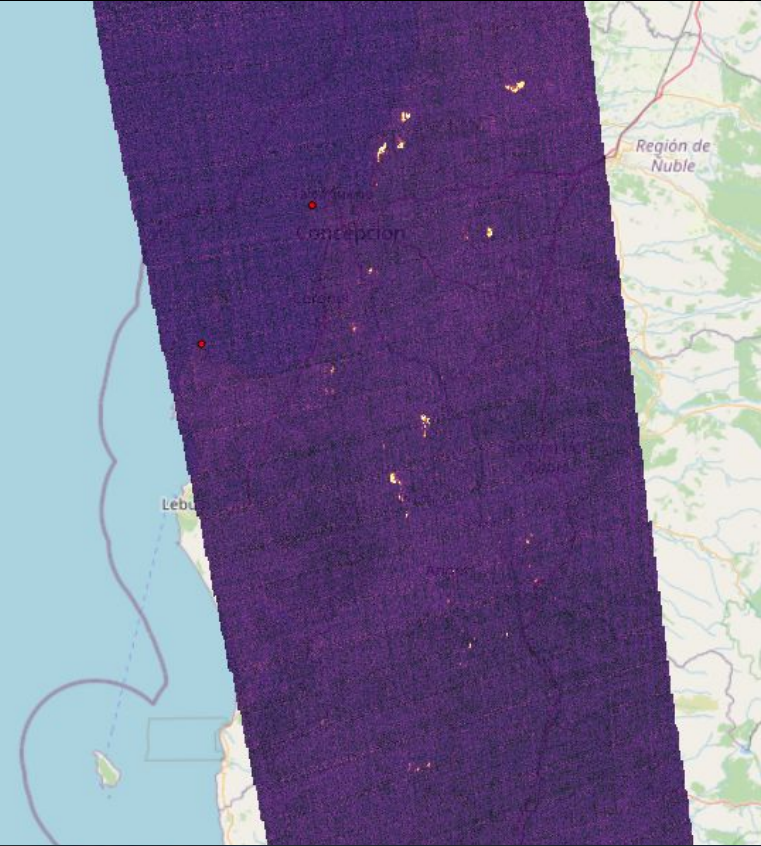
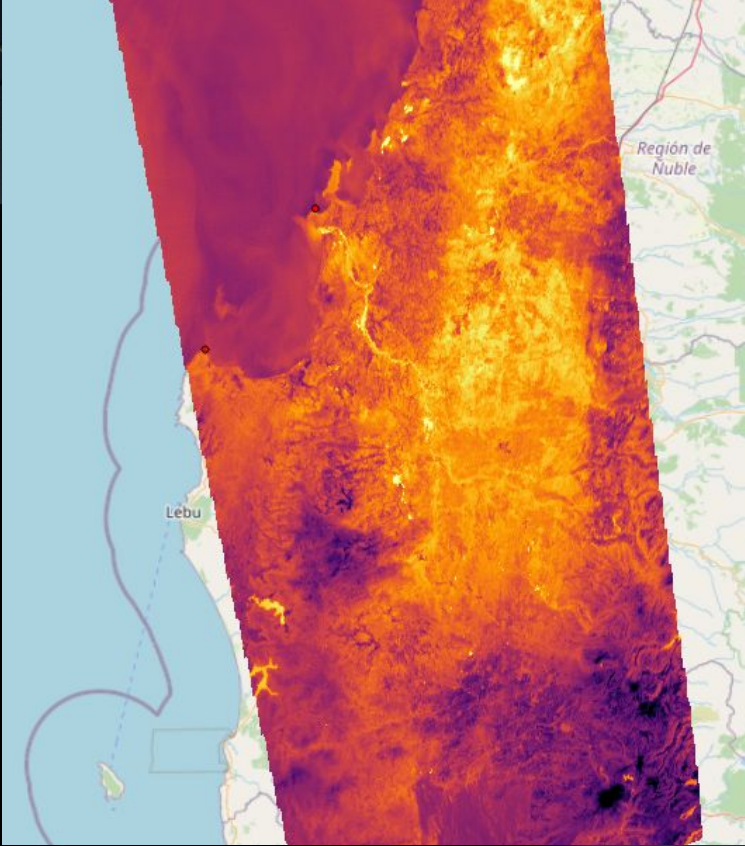
Closing the gap between
detection and on-ground action.



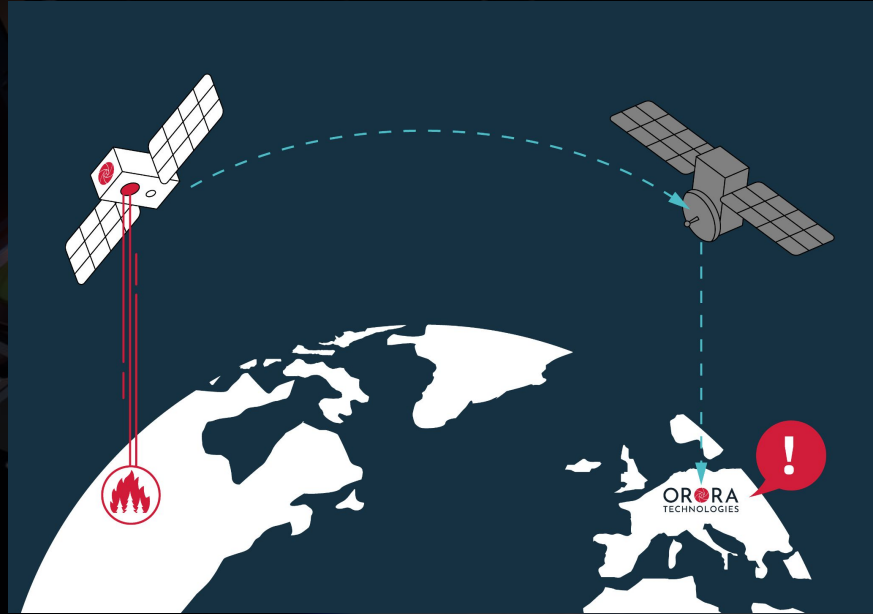
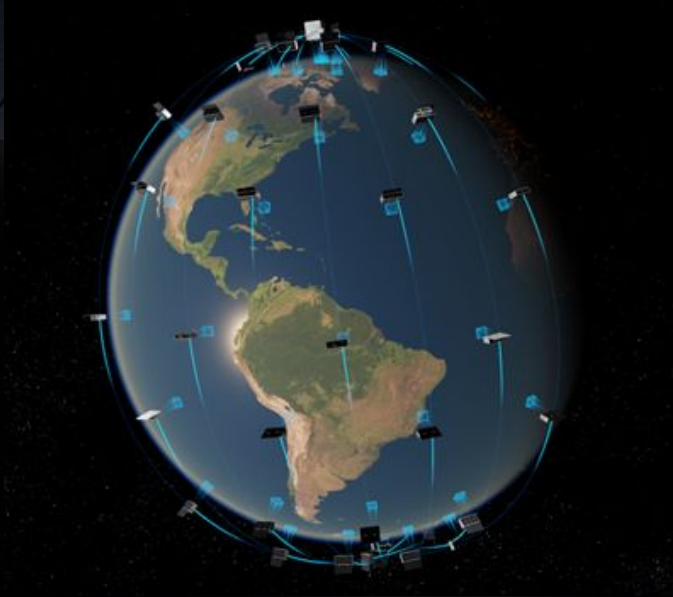
Edge ML: On-board data processing and fire detection



Edge ML: On-board data processing and fire detection



Edge ML: On-board data processing and fire detection

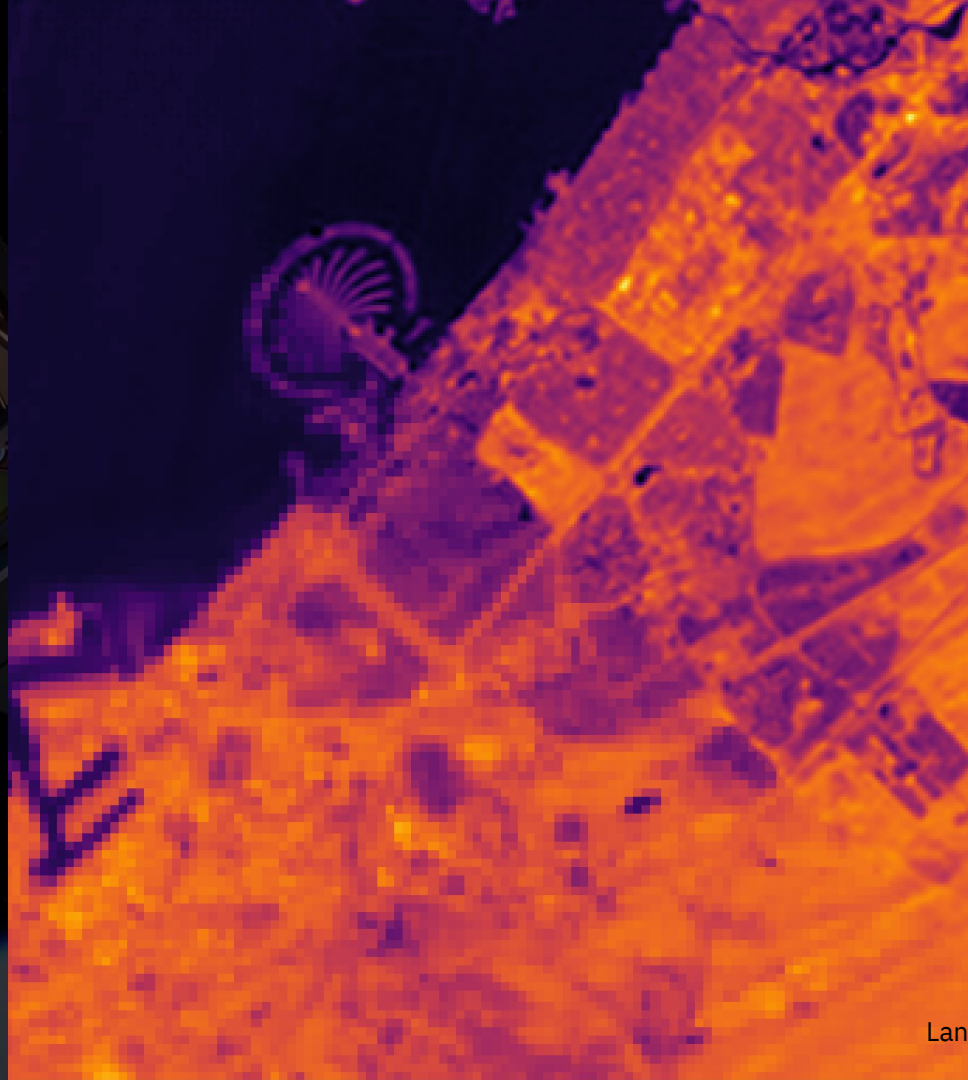


→ 3-10 Minutes between recording and wildfire notification (instead of >1.5h)

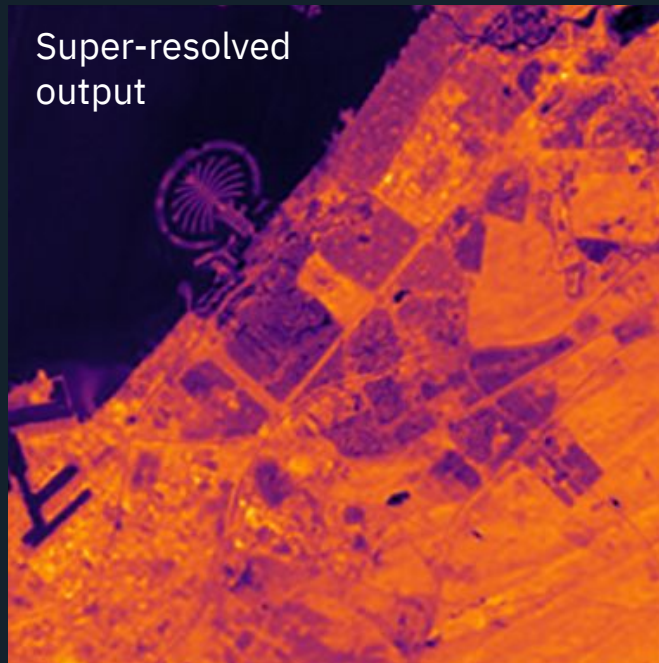
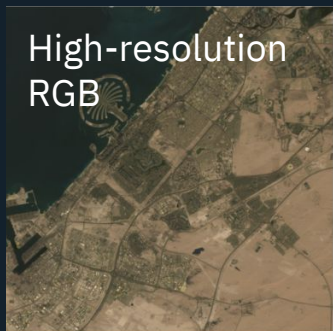
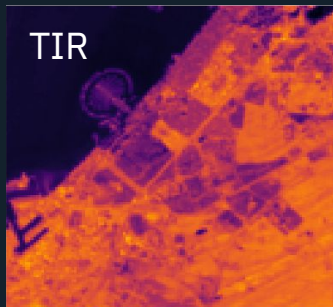
An aerial view of a satellite in space, showing its complex structure and solar panels. The satellite is positioned in the upper left quadrant of the frame, with the Earth's surface visible in the lower right.

Super Resolution

Increasing the effective
resolution of our data products.



4x Effective Resolution using Machine Learning



In cooperation with



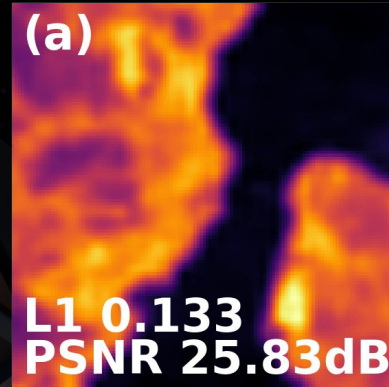
Enhancing the effective spatial data resolution with Deep Learning

- Multi-spectral Fusion of TIR & VIS data.
 - **4x** increase in spatial resolution.
 - Validated on **L1 Radiance** and **L2 LST**.
 - Estimation of **predictive uncertainty** as a data quality indicator

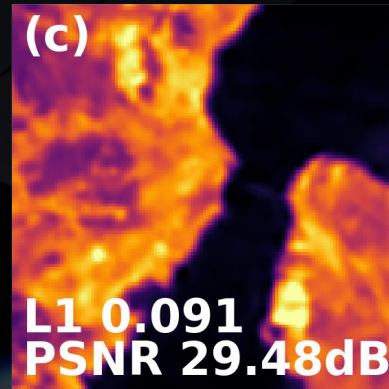
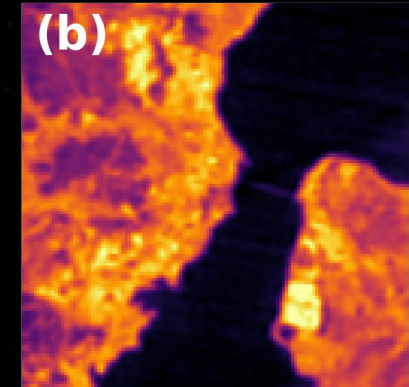
Upcoming publication

Multi-Spectral Super-Resolution of Thermal Infrared Data Products for Urban Heat Applications, IGARSS 2023

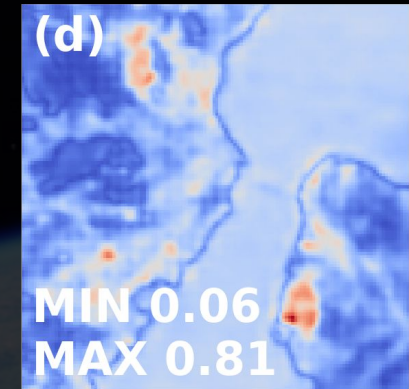
Bicubic



Ground Truth



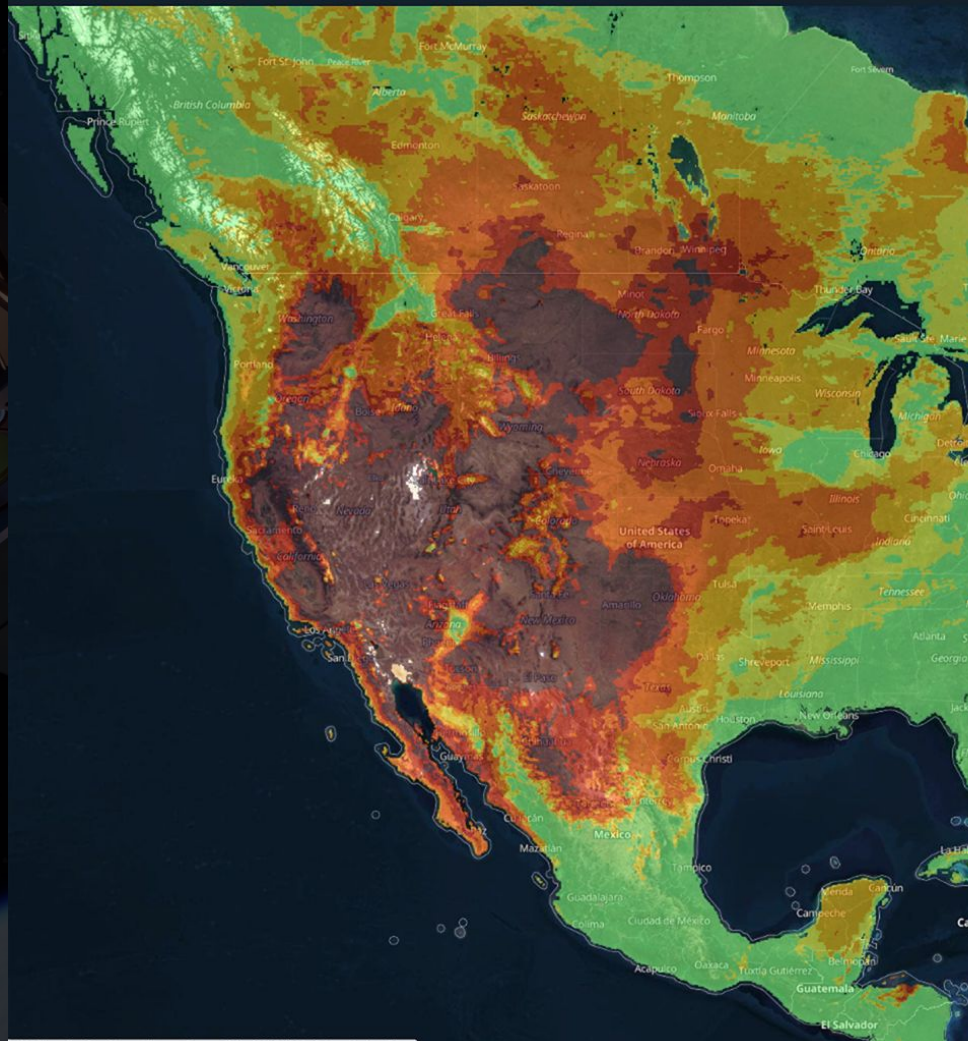
MSSR



Uncertainty

Fire Risk

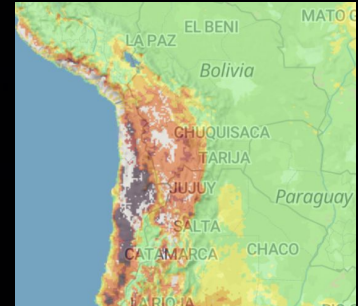
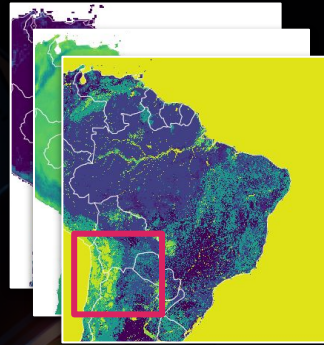
Deriving the next 7d-fire hazard
from our satellite data



Fire Risk Forecasting with ML

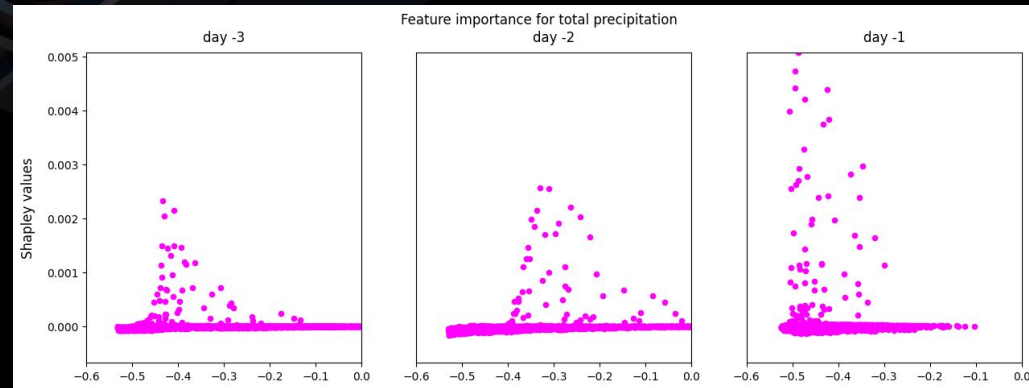
- **Spatiotemporal Model: 3D U-net**

- Data Input: Meteorological data, socioeconomic data, landcover, engineered features
- Outperforms standard risk model FWI



- **Explainability:** Feature importance

- **Shapley values**
- What is the **contribution** of each **input feature** to the model **prediction**?



Presented at:

EGU "AI for natural hazard management", publication late 2023

Get in touch for early access to our ARD Thermal Intelligence Base Products!

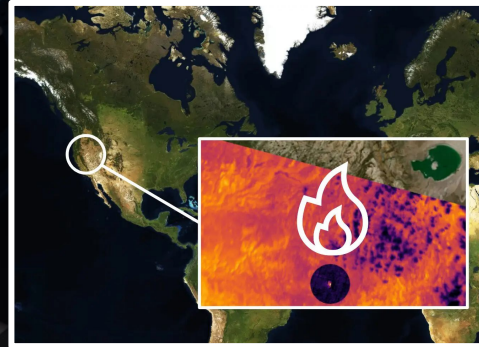


OroraTech LST
Land Surface Temperature

80m
Resolution

12h
Revisit

<2K
Accuracy

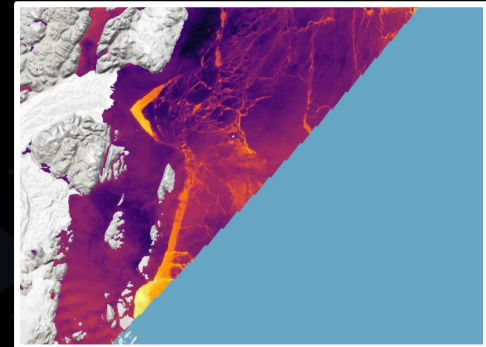


OroraTech WFS Pro
Thermal Anomaly Detection

4x4m
Anomaly Size

5min
Latency

48/d
Scans



OroraTech SST
Sea Surface Temperature

200m
Resolution

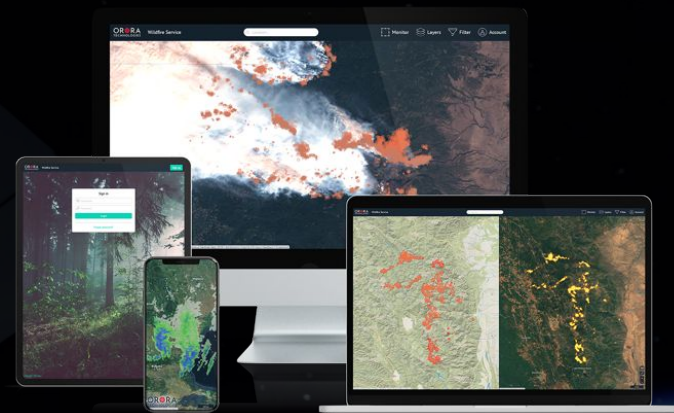
12h
Revisit

<1K
Accuracy

Data Product Access



API based access to integrate our data Into
Your Existing Platforms



On demand: Customizable Data
Visualization Platform



Korbinian Wuerl

Data Product Manager

korbinian.wuerl@ororatech.com



Julia Gottfriedsen

Data Science Team Lead

julia.gottfriedsen@ororatech.com

Thank you!
Questions?

**Thermal
Intelligence
for Sustainable
Earth
Satellite Data
Products**